



Aalborg Universitet

AALBORG UNIVERSITY
DENMARK

Relationship between knee joint contact forces and external knee joint moments in patients with medial knee osteoarthritis
effects of gait modifications

Richards, Rosie; Andersen, Michael Skipper; Harlaar, Jaap; van den Noort, Josien

Published in:
Osteoarthritis and Cartilage

DOI (link to publication from Publisher):
[10.1016/j.joca.2018.04.011](https://doi.org/10.1016/j.joca.2018.04.011)

Creative Commons License
CC BY-NC-ND 4.0

Publication date:
2018

Document Version
Accepted author manuscript, peer reviewed version

[Link to publication from Aalborg University](#)

Citation for published version (APA):

Richards, R., Andersen, M. S., Harlaar, J., & van den Noort, J. (2018). Relationship between knee joint contact forces and external knee joint moments in patients with medial knee osteoarthritis: effects of gait modifications. *Osteoarthritis and Cartilage*, 26(9), 1203-1214. <https://doi.org/10.1016/j.joca.2018.04.011>

General rights

Copyright and moral rights for the publications made accessible in the public portal are retained by the authors and/or other copyright owners and it is a condition of accessing publications that users recognise and abide by the legal requirements associated with these rights.

- Users may download and print one copy of any publication from the public portal for the purpose of private study or research.
- You may not further distribute the material or use it for any profit-making activity or commercial gain
- You may freely distribute the URL identifying the publication in the public portal -

Take down policy

If you believe that this document breaches copyright please contact us at vbn@aub.aau.dk providing details, and we will remove access to the work immediately and investigate your claim.

1 RELATIONSHIP BETWEEN KNEE JOINT CONTACT FORCES AND EXTERNAL KNEE JOINT MOMENTS IN
2 PATIENTS WITH MEDIAL KNEE OSTEOARTHRITIS: EFFECTS OF GAIT MODIFICATIONS

3 ***R.E. Richards^{1*}, M.S. Andersen², J. Harlaar¹³, J.C. van den Noort¹⁴***

4 1) VU University medical center, Department of Rehabilitation Medicine, Amsterdam Movement
5 Sciences, Amsterdam NL

6 2. Department of Materials and Production, Aalborg University, Denmark

7 3) Delft University of Technology, Delft, NL

8 4) Academic Medical Center, Musculoskeletal Imaging Quantification Center (MIQC), Department of
9 Radiology and Nuclear Medicine, Amsterdam Movement Sciences, Amsterdam, NL

10 **Email addresses**

11 1) R.E. Richards r.richards@vumc.nl

12 2) M.S. Andersen msa@mp.aau.dk

13 3) J. Harlaar j.harlaar@vumc.nl

14 4) J. C. van den Noort j.vandennoort@vumc.nl

15

16

Abstract

Objective

To evaluate i) the relationship between the knee contact force (KCF) and knee adduction and flexion moments (KAM and KFM) during normal gait in people with medial knee osteoarthritis (KOA), ii) to evaluate the effects on the KCF of walking with a modified gait pattern and iii) to evaluate the relationship between changes in the KCF and changes in the knee moments.

Method

We modeled the gait biomechanics of thirty-five patients with medial KOA using the AnyBody Modeling System during normal gait and two modified gait patterns. We calculated the internal KCF and evaluated the external joint moments (KAM and KFM) against it using linear regression analyses.

Results

First peak medial KCF was associated with first peak KAM ($R^2=0.60$) and with KAM and KFM ($R^2=0.73$). Walking with both modified gait patterns reduced KAM ($p=0.002$) and the medial to total KCF ratio ($p<0.001$) at the first peak. Changes in KAM during modified gait were moderately associated with changes in the medial KCF at the first peak ($R^2=0.54$ and 0.53).

Conclusions

At the first peak, KAM is a reasonable substitute for the medial contact force, but not at the second peak. First peak KFM is also a significant contributor to the medial KCF. At the first peak, walking with a modified gait reduced the ratio of the medial to total KCF but not the medial KCF itself. To determine the effects of gait modifications on cartilage loading and disease progression, longitudinal studies and individualized modelling, accounting for motion control, would be required.

Keywords: knee osteoarthritis, knee contact force, knee adduction moment, gait modifications, musculoskeletal modeling

40 **Abstract word count: 250**

41 **Word count main text: 3994**

42 **Number of Tables: 5**

43 **Number of Figures: 1 (plus 2 supplementary data)**

44 **Running title:** Joint forces in knee osteoarthritis

45

46 **Corresponding address:** VU University medical center, Department of Rehabilitation Medicine,

47 Amsterdam Movement Sciences, the Netherlands Tel: +31 (20) 444 0815,email:

48 r.richards@vumc.nl

49

50

Introduction

Increased dynamic knee loading is associated with progression of medial knee osteoarthritis (KOA)^{1, 2}. The knee adduction moment (KAM) is often reported in studies investigating knee biomechanics^{3, 4}. Higher KAM is associated with radiographic changes in the knee joint structure and cartilage degeneration^{2, 5}. KAM is considered to be a surrogate measure for knee contact force (KCF) which is assumed to represent the detrimental biomechanics leading to cartilage changes. However since KAM is only a first approximation of KCF⁶, it has been suggested that the KFM should be taken into account as well^{5, 7, 8}. In studies measuring KCF using instrumented prostheses, the association between KAM and KCF ranges from $R^2=0.09$ to $R^2=0.97$ ⁶. Unfortunately, results are typically based on low-powered studies and direct measurement of KCF is not possible in the intact knee. Furthermore, muscle activation patterns after knee arthroplasty (TKA) may not be representative of activation patterns in healthy or KOA patients⁹. As such, relationships between KAM and KCF in TKA subjects may not be generalizable to the healthy or KOA population.

Estimation of KCF is possible through computational musculoskeletal modeling systems, such as the AnyBody Modeling System (AMS, AnyBody Technology, Aalborg, Denmark) or OpenSim^{10, 11}. Studies based on musculoskeletal modeling investigating associations between KAM and KCF have reported R^2 values from 0.36 (in young healthy subjects)¹², 0.52 (in older adults)¹³ to 0.6 (in young subjects post-ACL reconstruction)⁸. These values suggest only moderate association between the measured KAM and estimated KCF.

Despite the influence of biomechanical factors in KOA, to date modelling studies have largely focused on healthy individuals¹⁴, individuals post-ACL reconstruction⁸ or individuals post-TKA^{15, 16}. Few studies have reported the KCF in KOA patients and fewer still have reported changes in KCF in KOA patients following intervention, with assessment of the biomechanical effects usually limited to changes in KAM and KFM.

75 With increasing KOA incidence and an increasing need to address the underlying
76 biomechanical factors, there is now considerable research focus on understanding the effectiveness
77 of gait modifications as a conservative intervention for reducing KAM^{17, 18}. Gait modifications such as
78 modifying the foot progression angle can successfully reduce KAM and have also resulted in
79 improvements in pain and function^{19, 20}. However, KAM reductions are not always matched by KCF
80 reductions; changes in medial KCF (mKCF) in subjects with instrumented prostheses ranged from 18%
81 increase²¹ through 4.5%²² to 18%²³ to 45% decrease²⁴ depending on the type of gait modification and
82 the phase of the gait cycle. However, as argued previously, these results may not be generalizable to
83 the KOA population.

84 Our first aim was to investigate the relationship between the external knee moments (i.e. KAM
85 and KFM) and the modeled KCF during steady-state walking in patients with medial KOA. We
86 hypothesized that KAM would be associated with mKCF and total KCF (tKCF) at the first peak but not
87 at the second⁶. Our second aim was to investigate changes in the mKCF and tKCF following toe-in and
88 step width gait modification. We hypothesized that walking with either toe-in gait or with wider steps
89 would reduce the first peak of the mKCF, in line with reductions in KAM²⁵. Finally, our third aim was to
90 investigate how *changes* in external knee moments were associated with *changes* in the mKCF. We
91 hypothesized that KAM changes would be strongly associated with mKCF changes, similar to the
92 relationship between these parameters reported pre- and post-high tibial osteotomy²⁶.

Method

Participants

This study uses data collected for a previous study²⁷ with forty participants with medial KOA. Data from 35 of 40 participants were analyzed; demographics are presented in Table 1. Five participants were excluded due to incorrect format of the input data for the model. Characteristics of the included participants (n=35) were not significantly different to the excluded participants (n=5). Ethical approval was granted by the VUmc Medical Ethics committee and all participants provided written consent. Inclusion and exclusion criteria for the study are described in Richards et al²⁷.

[Insert Table 1]

Gait analysis

Participants attended the Virtual Reality laboratory at the VUmc for 3D instrumented treadmill-based gait analysis²⁷. In this secondary analysis, we used three gait conditions from our previous study; i) normal gait, ii) toe-in gait and iii) wide-steps gait. For each modification, participants received real-time feedback based on a pre-defined target for the modification²⁷.

Musculoskeletal modeling and data analysis

The .c3d files from the raw data collection were used as input for a lower limb musculoskeletal model run in AnyBody Modeling System²⁸. Validation of a similar model against data from an instrumented knee showed strong agreement with the experimental data²⁸. Recently, small modifications have been made to the model to improve the predictions of the second peak. Results of validation of the current model are presented in Appendix A. Model anatomy was defined based on cadaveric measurements from the Twente Lower Extremity (TLEM) dataset²⁹. Initially, a stick figure was created based on the experimental data for the static trial and morphed with the musculoskeletal template geometry to create a scaled musculoskeletal model²⁸. Inverse kinematics were used to calculate the joint angles based on the motion capture data. During this step, the knee was modelled as ball-and-socket joint. These angles and the morphed model and ground reaction forces provided input to an inverse

dynamics analysis to calculate joint moments, muscle forces and KCF. Dynamic equilibrium equations were solved using muscle activities squared as the muscle recruitment (optimization criteria). Non-negativity constraints were applied to ensure that muscles only pull and not push¹¹. To account for resistance against varus-valgus and internal-external provided by the ligamentous structures of the knee, reaction moments in these directions were included in the inverse dynamics, allowing the muscles crossing the knee to only balance the flexion-extension moment. Joint moments and forces were calculated based on the ISB segment definitions³⁰ and the Grood and Suntay method was used to express the knee kinematics and kinetics³¹. Joint contact forces (compressive forces only) were calculated as the net loading on the joint resulting from muscular forces, gravitational forces, inertial forces and ground reaction forces and moments. Joint moments and forces were expressed in the shank coordinate system³¹ and normalized to body weight and the product of body weight and height, respectively. The medial-lateral distribution of the KCF was calculated by applying a moment equilibrium (equation 1) and force equilibrium (equation 2) in the frontal plane. The moment arms for the condyles were estimated based on reported ratios of the condylar width relative to the knee width from X-Rays of the knees of 101 subjects³². Validation of the force and moment equilibriums are presented in Appendix A.

$$KAM + KCF_{lateral} \cdot CMA_L - KCF_{medial} \cdot CMA_M = 0 \quad (\text{eq. 1})$$

where $KCF_{lateral}$ is the contact force in the lateral knee compartment,

KCF_{medial} is the contact force in the knee in medial knee compartment

CMA_L is the length of the lateral condyle moment arm

KAM is the knee adduction moments in the shank coordinate system and

CMA_M is the length of the medial condyle moment arm

$$KCF_{total} = KCF_{lateral} + KCF_{medial} \quad (\text{eq. 2})$$

where KCF_{total} is the total contact force

Data analysis and extraction

Data were time-normalized to 100% gait cycle using the ground reaction force data with a threshold of 25N to determine gait events. From each complete gait cycle we extracted peak values for the mKCF and tKCF during the first (1-50%) and second (51-100%) half of the stance phase. Using these timings, we identified peak values in the external KAM and KFM (flexor and extensor). Thus, for each gait trial, we extracted multiple values for KAM and KFM (i.e. from several strides, mean 22 ± 8), where each value corresponded to a peak in the medial or total contact force. For the flexion moment, we also extracted the absolute peak value over the full gait cycle. Finally, KAM impulse, the magnitude of KFM impulse and the mKCF and tKCF impulse were calculated per cycle.

Statistical analysis

Prior to statistical analysis, outcome measures were checked for normality with Shapiro–Wilk and Kolmogorov-Smirnov tests. Where deviations from normal distribution were found, non-parametric tests were used.

To investigate our first aim we used linear regression analyses with either the first, second or both peaks of the mKCF or tKCF as the dependent variable. Independent variables were peak KAM (first, second or both peaks) and peak KFM (first, second or both peaks). When both peaks were used in the regression analysis, correlation was with both first and second peak of the KCF. For the peak KFM, we considered the magnitude of KFM since both KFM and knee extension moments may be associated with the KCF. Furthermore, we evaluated the relationship between the ratio of the mKCF to tKCF (at the peak values) and KAM (first, second or both peaks) and KFM (first, second or both peaks) since KAM may better represent the distribution of the KCF than the mKCF itself^{33, 34}. Furthermore, we modeled the relationship between KAM impulse, magnitude of the KFM impulse, the mKCF and tKCF impulse and the ratio of the mKCF to tKCF. For all regression analyses, data were checked for significant outliers using case wise diagnostics within SPSS. Data were also checked for independence of observations, using the Durbin-Watson statistic in SPSS. Homoscedasticity and normality of the residuals were checked visually using histograms, scatter plots and normal P-P plots. Assumptions

were fulfilled. The analysis unit was the number of patients (n=35) and all data were from normal walking condition (i.e. walking without gait modifications).

Second, we investigated the effect of the gait modifications on the external joint moments and internal KCF. For this analysis, the analysis unit was the number of patients (n=35) with three conditions (normal gait, toe-in gait and wide-steps gait). Therefore, we used repeated measures analysis of variance (ANOVA) and the Friedman test in the case of deviations from normal distribution, with the type of gait pattern as the independent variable and the peak internal KCF (medial or total), peak external force (KAM or KFM), KAM impulse, KCF impulse (medial or total) or mKCF to tKCF ratio as the dependent variable. We used post-hoc pairwise comparisons with Sidak correction to determine which gait modifications differed from normal gait. For non-parametric data, we used the Wilcoxon signed rank test for pairwise comparisons.

Finally, we evaluated the association between *changes* in the external joint moments and *changes* in the mKCF. For this regression model, we considered changes in the first and second peak mKCF as the dependent variable and *change* in the peak KAM (first, second) and *change* in peak KFM (first, second) as independent variables. Statistical significance was set to $\alpha=0.05$. All analyses were performed using SPSS software, version 22.0 (SPSS, Chicago, IL, USA).

Results

At the first peak, we found a moderate to strong statistical association between KAM, KFM and mKCF, (adjusted $R^2=0.60$ [95%CI 0.47 to 0.68] for the KAM only model and 0.73 [0.63, 0.80] for KAM and KFM together); Table 2 and Fig. 1. Statistical association between the external moments and mKCF at the second peak was lower (adjusted $R^2=0.44$ [0.29, 0.55] and 0.43 [0.26, 0.54] respectively). Statistical associations between KAM and tKCF were generally weak or moderate (maximum adjusted $R^2=0.44$ [0.27, 0.54]) and KFM did not contribute significantly ($p>0.05$). Including both first and second peak KAM in the models reduced the association of the external loads with the internal knee joint forces and increased the RMS error.

Peak KAM was statistically associated with the mKCF to tKCF ratio, particularly at the second peak, adjusted $R^2=0.86$ [0.80, 0.89] (Table 2). Peak KFM was also a significant predictor at the first peak ($p<0.001$), but not at the second ($p=0.211$).

We observed a strong and significant statistical association between KAM impulse and the ratio of the medial to tKCF impulse (adjusted $R^2=0.83$ [0.76, 0.87]) with an error of less than 4%. KFM impulse did not significantly contribute to the mKCF to tKCF impulse ratio.

[Insert Table 2]

[Insert Figure 1]

First peak KAM was statistically reduced while walking with toe-in gait and wide-steps gait (mean reduction of $0.16\%BW \cdot Ht$, $p=0.002$), Table 3. Unlike KAM, where the first peak was higher than the second, mKCF and tKCF were higher at the second peak compared to the first in all conditions. First peak mKCF was significantly different between the three modified walking conditions ($p=0.019$), Figure S2 (Appendix B). However, post-hoc testing did not reveal significant differences compared to normal walking ($p=0.986$ and $p=0.064$ respectively). First peak tKCF was significantly different

between toe-in gait and wide-steps gait ($p=0.047$), but again no significant differences were found relative to normal walking ($p=0.088$ and $p=1.000$). Second peak mKCF and second peak tKCF were both significantly reduced during toe-in gait (mean difference 0.07BW, $p=0.002$ and 0.15BW, $p<0.001$, respectively). KAM, mKCF and tKCF impulse were unchanged during modified gait walking ($p>0.05$). The ratio of the mKCF to tKCF ratio decreased at the first peak compared with normal gait condition in both modified gait conditions (mean reduction of 0.02, $p<0.001$); Table 3. At the second peak, the ratio increased during the toe-in gait (mean increase of 0.01, $p=0.020$) but not during wide-steps gait.

[Insert Table 3]

A moderate statistical association between change in (Δ) first peak mKCF and Δ first peak KAM was found (adjusted $R^2=0.54$ [95% CI 0.38, 0.64]), Table 4, during walking with toe-in gait with respect to normal walking. Adding Δ first peak KFM to the model improved the fit to $R^2=0.74$ [0.63, 0.80]), and reduced the RMS error. The unstandardized beta for Δ KAM (0.27[0.17, 0.34]) was more than twice that for Δ KFM (0.11[0.08, 0.16]). The model for the wide-steps condition (Table 4) showed similar results, although the contribution of Δ first peak KAM was lower than for the toe-in model. A weak statistical association was found between Δ second peak KAM and Δ second peak KFM and Δ second peak mKCF (adjusted $R^2<0.28$).

A weak statistical association was found between Δ first peak KAM and Δ ratio of peak mKCF to tKCF (adjusted $R^2=0.32$ [0.15, 0.45] for toe-in gait and 0.29[0.12, 0.43] for wide-steps gait). Including Δ peak KFM improved the models to adjusted $R^2=0.55$ [0.38, 0.64] and 0.62[0.46, 0.70] respectively. At the second peak, the statistical association between Δ peak KAM and Δ mKCF was stronger (Table 4) ($R^2>0.71$).

Finally, Δ KAM impulse was weakly associated with Δ mKCF to tKCF ratio (adjusted R^2 values of 0.32 and 0.40 for toe-in gait and wide-steps gait respectively (Table 5).

227 [Insert Table 4]

228 [Insert Table 5]

229

Accepted manuscript

Discussion

We investigated the relationships between the knee joint moments and the internal knee loading in people with medial KOA during steady-state walking. Moreover, we investigated the effects of toe-in and wide-steps gait on the KCF, and the effects of these modifications on the relationships between the external joint moments and internal joint forces. To the best of our knowledge, this is the first paper to report changes in KCF during gait modifications in KOA patients. Previous studies have reported effects of gait modifications on knee moments¹⁷ or on KCF post-TKA^{22, 35} or in healthy controls^{34, 36}. We found that walking with a modified gait did not reduce the KCF compared to normal walking. However, medial to total KCF ratio was significantly reduced.

During normal walking, first peak KAM was statistically associated with first peak mKCF ($R^2=0.60[0.47,0.68]$), similar to the association reported post-ACL reconstruction⁸. Including first peak KFM increased the variance explained by the regression model by 13%, reiterating that KAM and KFM are both predictors of the mKCF^{7, 8}. The first peak KAM coefficient ($0.239[0.177, 0.282]$) was more than twice that of the KFM coefficient ($0.102[0.064, 0.145]$). Hence, for a given reduction in first peak KAM of 10%, KCF will be reduced only if the increase in KFM is less than $23.43[19.44, 27.6]\%$. Studies investigating effects of gait modifications often focus exclusively on KAM without considering KFM. Accordingly, a reduction in KAM with a concurrent increase in KFM means that the mKCF will not necessarily be reduced. Indeed, data from an instrumented knee prosthesis during medial thrust gait showed that even with a reduction in KAM of 32% during medial thrust gait, mKCF was not significantly reduced²².

At the second peak, KAM and mKCF were less well associated $0.44[0.29, 0.55]$, suggesting that second peak KAM is a poor predictor of second peak mKCF. KFM was not a significant predictor of mKCF, coefficient of $0.00[-0.100, 0.083]$. The weak relationship between KAM, KFM and the internal KCF at the second peak may be explained by a combination of high co-contraction between the quadriceps and the plantarflexor muscles at the second peak and a sensitivity of the model to small errors in the moment arm of the rectus femoris. Interestingly, mKCF and tKCF are both higher at the

second peak than at the first while KAM and KFM are both higher at the first. This discrepancy is likely due to the co-contraction of the knee flexors and extensors, which is represented in the musculoskeletal model but not in the external joint moments. In a study of nine subjects with instrumented knee replacements, second peak mKCF was higher than first peak in five subjects, whereas second peak KAM was higher only in one subject. Given this, and the results from our models, future studies should be cautious about interpreting second peak KAM as a predictor (or surrogate measure) of KCF.

In this study, first peak mKCF during walking with modified gait was not significantly reduced, despite a significant reduction in KAM. This is in contrast with significant reductions reported by Schlotman (2016)³⁷ and Koblauch, et al. (2013)³⁴. In the latter study³⁴ the change in foot progression angle (FPA) was over 25°, an unsustainable FPA change for KOA patients during activities of daily living. Furthermore, the reductions in the mKCF were accompanied by a concurrent 25% increase in the tKCF increasing lateral KCF by 125%, a potentially damaging increase. Our finding corroborates that of Walter, et al. (2010)²²; changes in KAM are not necessarily reflected in changes in the mKCF. Based on this, we suggest that there is currently insufficient evidence for using gait modifications as a clinical intervention since we did not find clinically significant changes in KCF and the disease modifying effect remains unknown.

Despite no significant reduction in first peak mKCF during modified gait walking, the ratio of mKCF to tKCF decreased significantly ($p < 0.001$), albeit by a small amount. Redistributing the load towards the lateral compartment may be beneficial since the lateral cartilage tends to be thicker than the medial³⁸. In severe KOA subjects, thinner medial compartment cartilage is associated with higher KAM values³⁹. This suggests that, unlike in young, healthy controls³⁸, the cartilage in the knees of people with (severe) KOA do not respond positively to the loads placed on it. Hence, a reduction in medial compartment load may reduce cartilage thinning and potentially slow disease progression.

Surprisingly, next to a decrease in first peak KAM, second peak mKCF and tKCF decreased during toe-in gait, albeit a smaller reduction than reported during toe-out gait³⁶. However, there was no significant change in the second peak KAM, reiterating that second peak KAM is a poor surrogate measure for second peak KCF. The reduction in second peak tKCF likely results from a reduction in the gastrocnemius force, which is strongly correlated with the peak KCF⁴⁰. Reducing the gastrocnemius force may not be a clinically recommendable option for gait retraining considering the important role of the gastrocnemius in power generation in terminal stance.

Despite KAM reductions during toe-in gait, mKCF did not decrease since changes in mKCF are dependent on both tKCF and KAM (equations 1 and 2). This result suggests a limited clinical effect of toe-in gait on the mKCF and tKCF. Post-hoc analysis of the individual muscle activity predicted by the model (Figure S3 in Appendix C) and of the EMG profiles recorded over the knee-spanning muscles (Figure S4) revealed only small changes in these profiles between conditions with considerable variation between subjects. Changes in muscle forces may be attributable to compensatory movements such as increasing knee flexion, which was commonly observed during walking with a modified gait pattern. An increase in the knee flexion and hence knee flexion moment increases activation of the muscles crossing the knee which may increase the tKCF. Through training, it may be possible to train the desired gait modification without coincident compensations such as increased knee flexion.

Although we did not find significant reductions in the mKCF during modified gait walking, a moderate statistical association existed between the *change* in KAM and the *change* in mKCF for both toe-in gait and wide-steps gait at the first peak ($R^2=0.54$ and 0.53). However, according to our model a 10% reduction in first peak KAM would yield only a 4% reduction in first peak mKCF. Consequently, for a 10% reduction in first peak mKCF, a 29% reduction KAM would be required. Achieving this would require a greater modification of the gait pattern, which would be likely unsustainable. Change in KFM also contributed strongly to the change in mKCF for both modified gait patterns (coefficients of 0.27

for KAM and 0.11 for KFM during toe-in gait and 0.24 to 0.15 during wide-steps gait). A 10% reduction in KAM would, therefore, be negated by a 25% increase in KFM during toe-in gait and a 16% increase during wide-steps gait. Gait modifications that reduce both KAM and KFM may therefore be preferable to modifications reducing KAM only. Creaby (2015)⁷ proposed a combination of stiff knee gait to reduce KFM with trunk lean to reduce KAM, but this has yet to be tested in practice. Furthermore, this strategy may increase knee stiffness and co-contraction, and therefore increase KCF.

Focusing on the internal KCF does not provide the full picture; the KCF does not provide information about the cartilage stresses - ultimately the parameter we are trying to change. A recent study showed that alongside higher peak KCF, contact pressures are increased in established KOA⁴¹. To assess changes in cartilage loading, finite element modeling and imaging of the knee joint using MRI is required⁴². A recent case study using subject-specific modelling and investigating effects of gait modifications found that changes in KAM were not correlated with changes in the medial contact pressures⁴³. Devices, that can replicate the knee joint movement in-vitro, such as that designed by van de Bunt, et al. (2017)⁴⁴ may also provide valuable insight into the effects of gait modifications on the cartilage.

We must bring attention to the limitations of this work. First, aside from gross scaling, the musculoskeletal model used in this study was not personalized to the individual. Furthermore, we did not consider any neural factors, not associated with altered kinematics and kinetics, meaning that the model does not represent the altered neural activation patterns shown in KOA patients⁴⁵. We did not personalize the muscle parameters and we used a hinge joint to model the knee in the inverse dynamics calculations. However this approach has been shown to predict KCF with similar accuracy to a more complex model¹⁶. To improve estimated joint loads, including subject-specific morphology developed from MRI⁴⁶ or CT scans⁴⁷ and subject-specific maximum isometric strength for each individual muscle can be used. In the KOA population, there are often co-contractions between muscle

groups^{48, 49} which are associated with increased disease progression⁴⁹. These co-contractions may not be adequately represented in the model in this study.

We did not perform any correction for soft tissue artefacts. Future small-scale research studies using fluoroscopy to measure the bone movement are recommended to reduce reliance on skin mounted markers.

The regression models we present may have limited generalizability to the wider KOA population due to strict inclusion criteria for this study²⁷. We included only people with medial KOA since the intervention is only valid for people with medial KOA. Furthermore, the choice of linear regression analysis may be sub-optimal for representing the complex and non-linear behavior of the multi-body musculoskeletal system. Moreover, while we found statistically significant results, the effect sizes are unlikely to be clinically significant.

Finally, we assessed within-session changes in KCF and cannot extrapolate to long-term effects. Further work is needed to assess these effects, particularly since we hypothesize that tKFC may reduce with training time.

In conclusion, KAM was found to be a strong predictor of mKCF at the first peak during normal walking. Including KFM as a second predictor improved the relationship between the internal loading and the external moments. This suggests that the combination of KAM and KFM yields an improved surrogate measure of KCF, aiming to represent the cartilage loading, than KAM alone. At the second peak, the external moments are poor predictors of the mKCF. In this study, walking with toe-in or wide-steps gait modified first peak KAM, but did not reduce mKCF. However, the ratio of mKCF to tKCF, representing the distribution of the loading, was reduced. Changes in mKCF during modified gait were statistically associated with the changes in external moments at the first but not at the second peak. Future gait retraining studies should focus not only on reducing first peak KAM but also KFM to maximize the chances of reducing the medial contact force.

354 Table 1: Demographics of participants included in the study (n=35).

Characteristic	Mean (SD)	Range
Age (yr)	62.3 (5.91)	51.0 – 71.7
Height (m)	1.73 (0.09)	1.53 – 1.92
Mass (kg)	76.06 (10.35)	57.2 – 98.40
BMI (kg/m ²)	25.48 (2.63)	20.03 – 33.69
Gender	M 13 F 22 (63%)	
Kellgren and Lawrence Grade (of the more affected knee)	I: 16, II: 7, III: 8, IV: 4.	

355

356 Table 2: Regression equations with corresponding R² and RMS errors for fitting contact forces as a function of the external loads during **normal walking**.

Part of gait cycle	Contact Force	Regression Equation	c1 [95% CI]	c2 [95% CI]	c3 [95% CI]	Adj. R ² [95% CI]	RMS error (BW)	Percent age error
First peak stance phase	first peak medial	c1 + c2 KAM	1.000 [0.846, 1,205]	0.283 [0.227, 0.327]		0.597 [0.465, 0.680]	0.223	11.66
		c1 + c2 KAM + c3 KFM	0.829 [0.671, 1.019]	0.239 [0.177, 0.282]	0.102 [0.064, 0.145]	0.733 [0.630, 0.796]	0.181	9.75
	first peak total	c1 + c2 KAM	1.925 [1.638, 2,241]	0.131 [0.043, 0.214]		0.098 [0.005, 0.222]	0.362	15.50
		c1 + c2 KAM + c3 KFM	1.626 [1.326, 1.927]	0.054 [-0.033, 0.134]	0.177 [0.122, 0.246]	0.441 [0.274, 0.544]	0.285	12.23
	Medial to total force ratio (at first peak)	c1 + c2 KAM	0.573 [0.522, 0.614]	0.077 [0.066, 0.095]		0.592 [0.460, 0.676]	0.061	7.43
		c1 + c2 KAM + c3 KFM	0.609 [0.556, 0.614]	0.087 [0.073, 0.105]	-0.022 [-0.034, -0.010]	0.672 [0.551, 0.737]	0.055	6.69
Second peak stance phase	second peak medial	c1 + c2 KAM	1.531 [1.332, 1.758]	0.277 [0.186, 0.363]		0.439 [0.286, 0.549]	0.281	13.13
		c1 + c2 KAM + c3 KFM	1.531 [1.322, 1.774]	0.277 [0.186, 0.363]	0.000 [-0.100, 0.083]	0.430 [0.263, 0.535]	0.283	13.22
	second peak total	c1 + c2 KAM	2.991 [2.675, 3.433]	0.122 [-0.047, 0.263]		0.036 [-0.015, 0.141]	0.484	14.89
		c1 + c2 KAM + c3 KFM	3.025 [2.659, 3.506]	0.128 [-0.035, 0.267]	-0.060 [-0.240, 0.099]	0.027 [-0.031, 0.120]	0.487	14.98
	Medial to total force ratio (at second peak)	c1 + c2 KAM	0.513 [0.497, 0.529]	0.066 [0.059, 0.074]		0.858 [0.803, 0.888]	0.024	3.65
		c1 + c2 KAM + c3 KFM	0.510 [0.494, 0.525]	0.065 [0.058, 0.074]	0.006 [-0.004, 0.013]	0.859 [0.801, 0.887]	0.024	3.65

Part of gait cycle	Contact Force	Regression Equation	c1 [95% CI]	c2 [95% CI]	c3 [95% CI]	Adj. R ² [95% CI]	RMS error (BW)	Percent age error
first and second peaks stance phase	first and second medial	c1 + c2 KAM	1.584 [1.435, 1.769]	0.163 [0.102, 0.212]		0.203 [0.108, 0.297]	0.339	16.73
		c1 + c2 KAM + c3 KFM	1.581 [1,438, 1,759]	0.209 [0.141, 0.267]	-0.063 [-0.100, -0.023]	0.247 [0.138, 0.334]	0.330	1628
	first and second total	c1 + c2KAM	2.906 [2.653, 3.205]	-0.058 [-0.153, 0.023]		0.003 [-0.008, 0.051]	0.595	21.64
		c1 + c2KAM + c3 KFM	2.932 [2.704, 3.179]	0.066 [-0.040, 0.169]	-0.168 [-0.230, -0.108]	0.150 [0.053, 0.240]	0.549	19.96
	Medial to total force ratio (at first and second peak)	c1 + c2KAM	0.489 [0.464, 0.510]	0.093 [0.085, 0.104]		0.714 [0.648, 0.759]	0.063	8.82
		c1 + c2KAM + c3 v	0.489 [0.465, 0.510]	0.085 [0.074, 0.099]	0.011 [0.003, 0.018]	0.727 [0.661, 0.769]	0.062	8.37
	Complete stance phase (impulse)	c1 +c2 KAMi	0.608 [0.528, 0.697]	0.279 [0.208, 0.343]		0.581 [0.437, 0.671]	0.093	10.22
		c1 +c2 KAMi +c3 KFMi	0.463 [0.343, 0.605]	0.263 [0.199, 0.322]	0.153 [0.053, 0.258]	0.631 [0.488, 0.706]	0.087	9.89
Complete stance phase (impulse)	Total	c1 +c2 KAMi	1.180 [1.040, 1.336]	0.117 [-0.001, 0.224]		0.071 [-0.010, 0.196]	0.152	11.62
		c1 +c2 KAMi +c3 KFMi	0.912 0.681, 1.150]	0.088 [-0.024, 0.186]	0.283 [0.125, 0.444]	0.217 [0.053, 0.345]	0.140	10.93
	Medial to total force ratio	c1 +c2 KAMi	0.531 [0.508, 0.553]	0.152 [0.132, 0.174]		0.831 [0.762,0.868]	0.027	3.90
		c1 +c2 KAMi +c3 KFMi	0.559 [0.521, 0.593]	0.155 [0.133, 0.178]	-0.030 [-0.061, 0.005]	0.839 [0.767, 0.872]	0.026	3.70

357 Numbers in bold represent changes that did not contribute significantly to the model or non-statistically significant R² values. All other changes were significant at $\alpha=0.05$.

358 95% confidence intervals for the coefficients, c1, c2 and c3 based on 1000 bootstrap samples.

Table 3: Peak and impulse of external joint moments and internal knee contact forces and ratio of medial to total contact force; Mean (standard deviations) or Median (IQR).

		Normal walking/ baseline	Toe-in gait	Wide Steps gait	<i>p</i> (group level)
Knee moment (%BW*Ht or %BW*Ht*s)	Adduction First Peak	3.42 (0.90)	3.27 (1.29)*	3.26 (1.11)*	0.002
	Adduction Second Peak	2.50 (0.79)	2.47 (0.78)	2.54 (0.81)	0.794
	Adduction Impulse	1.10 (0.40)	1.07 (0.40)	1.10 (0.40)	0.143
	Flexion first peak	3.59(1.62)	3.24 (1.62)	3.69 (1.98)	0.075
	Flexion impulse	1.06 (0.23)	1.05 (0.23)	1.05 (0.23)	0.120
Contact force (BW or BW*s)	Medial First Peak	1.89 (0.36)	1.89 (0.37)	1.85 (0.35)	0.019
	Medial Second Peak	2.10 (0.38)	2.03 (0.33)**	2.11 (0.38)	0.002†
	Total First Peak	2.29 (0.36)	2.36 (0.42)	2.29 (0.38)	0.019
	Total Second Peak	3.18 (0.44)	3.03 (0.36)**	3.23 (0.50)	<0.001†
	Medial impulse	0.90 (0.15)	0.88 (0.14)	0.89 (0.14)	0.108
Medial to total force ratio	Total impulse	1.28 (0.14)	1.27 (0.13)	1.28 (0.15)	0.619
	First peak	0.83 (0.10)	0.81 (0.10)**	0.81 (0.10)**	<0.001†
	Second Peak	0.66 (0.06)	0.67 (0.07)*	0.65 (0.07)	0.001
	Impulse	0.70 (0.07)	0.69 (0.01)	0.70 (0.01)	0.196

†after Greenhouse Geisser correction for non-spherical data

*significant difference in post-hoc pairwise testing compared to normal walking at $\alpha=0.05$, after Sidak correction for multiple tests

** significant difference in post-hoc pairwise testing compared to normal walking at $\alpha=0.001$, after Sidak correction for multiple tests

Significant results shown in bold.

367

368

369 Table 4: Regression Equations with Corresponding R^2 and RMS Errors for Fitting Δ peak Medial Knee Contact Force and Δ peak Medial Knee Contact to
 370 **Total Contact Force** as a Function of Δ peak KAM and Δ peak KFM

		Regression Equation	c1 (<i>p</i>)	c2 (<i>p</i>)	c3 (<i>p</i>)	Adj. R^2	RMS error (BW)
Δ peak Medial Knee Contact Force	First peak	Change between normal and toe-in gait	c1 +c2 Δ KAM	-0.044 (0.001) [-0.071, -0.015]	0.345 (<0.001) [0.243, 0.436]	0.540 [0.380, 0.641]	0.111
			c1 +c2 Δ KAM +c3 Δ KFM	-0.048 (<0.001) [-0.074, -0.025]	0.269 (<0.001) [0.173, 0.337]	0.111 (<0.001) [0.077, 0.156]	0.083
		Change between normal and wide steps gait	c1 +c2 Δ KAM	-0.043 (0.017) [-0.072, -0.019]	0.380 (<0.001) [0.241, 0.517]	0.530 [0.369, 0.632]	0.101
			c1 +c2 Δ KAM +c3 Δ KFM	0.013 (0.323) [-0.012, 0.036]	0.239 (<0.001) [0.152, 0.342]	0.151 (<0.001) [0.096, 0.194]	0.066
	Second peak	Change between normal and toe-in gait	c1 +c2 Δ KAM	0.080 (<0.001) [0.049, 0.110]	0.193 (<0.001) [0.081, 0.275]	0.215 [0.065, 0.358]	0.123
			c1 +c2 Δ KAM +c3 Δ KFM	0.079 (<0.001) [0.047, 0.110]	0.192 (<0.001) [0.079, 0.277]	0.000 (0.982) [-0.065, 0.038]	0.124
		Change between normal and wide steps gait	c1 +c2 Δ KAM	-0.020 (0.372) [-0.070, 0.022]	0.261(<0.001) [0.158, 0.401]	0.244 [0.087, 0.386]	0.167
			c1 +c2 Δ KAM +c3 Δ KFM	-0.022 (0.324) [-0.069, 0.21]	0.263 (<0.001) [0.159, 0.404]	0.030 (0.063) [0.005, 0.069]	0.163
Δ ratio of peak Medial Knee Contact Force	First peak	Change between normal and toe-in gait	c1 +c2 Δ KAM	0.014 (0.002) [0.006, 0.021]	0.060 (<0.001) [0.037, 0.084]	0.315 [0.146, 0.451]	0.030
			c1 +c2 Δ KAM +c3 Δ KFM	0.015 (<0.001) [0.009, 0.022]	0.079 (<0.001) [0.059, 0.101]	-0.027 (<0.001) [-0.040, -0.016]	0.025
			c1 +c2 Δ KAM	0.009 (0.049) [0.003, 0.017]	0.062 (<0.001) [0.029, 0.099]	0.290 [0.124, 0.428]	0.027

		Regression Equation	c1 (<i>p</i>)	c2 (<i>p</i>)	c3 (<i>p</i>)	Adj. R ²	RMS error (BW)
to Total Contact Force	Change between normal and wide steps gait	c1 +c2 Δ KAM +c3 Δ KFM	-0.004 (0.320) [-0.011, 0.004]	0.096 (<0.001) [0.064, 0.120]	-0.036(<0.001) [-0.048, -0.021]	0.616 [0.460, 0.696]	0.020
		c1 +c2 Δ KAM	-0.011 (<0.001) [-0.015, -0.006]	0.076 (<0.001) [0.065, 0.095]		0.721 [0.607, 0.783]	0.016
	Second peak	c1 +c2 Δ KAM +c3 Δ KFM	-0.011 (<0.001) [-0.015, -0.006]	0.076 (<0.001) [0.064, 0.095]	0.001 (0.018) [-0.003, 0.008]	0.717 [0.592, 0.777]	0.016
		Change between normal and wide steps gait	-0.001 (0.727) [-0.005, 0.004]	0.071 (<0.001) [0.055, 0.085]		0.715 [0.599, 0.779]	0.017
		c1 +c2 Δ KAM +c3 Δ KFM	-0.001 (0.765) [-0.005, 0.004]	0.071 (0.059) [0.055, 0.086]	-0.002 (0.184) [-0.005, 0.000]	0.719 [0.595, 0.778]	0.017

371 Numbers in bold represent changes that did not contribute significantly to the model or non-statistically significant R² values. All other changes were

372 significant at α=0.05. 95% confidence intervals for the coefficients, c1, c2 and c3 based on 1000 bootstrap samples.

373

374 Table 5: Regression Equations with Corresponding R^2 and RMS Errors for Fitting Δ peak Medial Knee
 375 Contact Force Impulse as a Function of Δ KAM impulse ($\Delta KAMi$) and Δ KFM impulse ($\Delta KFMi$)

	Regression Equation	c1 (<i>p</i>) [95% CI]	c2 (<i>p</i>) [95% CI]	c3 (<i>p</i>) [95% CI]	Adj. R^2 [95% CI]	RMS error (BW*s)
Change between normal gait and toe- in gait	c1 +c2 Δ KAMi	0.008 (0.069) [0.000, 0.016]	0.193 (<.001) [0.103, 0.279]		0.317 [0.148, 0.453]	0.030
	c1 +c2 Δ KAMi + c3 Δ KFMi	0.008 (0.066) [0.000, 0.016]	0.188 (<0.001) [0.104, 0.256]	0.023 (0.429) [- 0.079, 0.114]	0.313 [0.124, 0.440]	0.030
Change between normal gait and wide steps	c1 +c2 Δ KAMi + c3 Δ KFMi	0.001 (0.884) [- 0.007, 0.09]	0.253 (<.001) [0.155, 0.348]		0.403 [0.231, 0.528]	0.033
	c1 +c2 Δ KAMi + c3 Δ KFMi	0.004 (0.376) [- 0.004, 0.013]	0.249 (<0.001) [0.161, 0.336]	0.139 (0.001) [0.063, 0.226]	0.502 [0.322, 0.604]	0.031

376 Numbers in bold represent changes that did not contribute significantly to the model or non-
 377 statistically significant R^2 values. All other changes were significant at $\alpha=0.05$. 95% confidence
 378 intervals for the coefficients, $c1$, $c2$ and $c3$ based on 1000 bootstrap samples.

379

380

Appendix A

The model used to predict the knee contact forces (KCF) in this manuscript was based a previously validated model. However, since the publication of the model in Lund et al²⁸ some small bugs have been fixed and the muscle recruitment criterion updated to account for sub-divided muscles¹⁶ to improve the predictions of the forces. In Figure S1, we present a comparison of the measured KCFs and the predicted KCFs based on 3 subjects (years 3, 4 and 5) and 4 trials per subject from the Grand Challenge data set⁵⁰. The strength of the knee flexors and extensors in the model used in the validation has been reduced by 35 % to match previous modeling assumptions for TKA patients^{16, 28}.

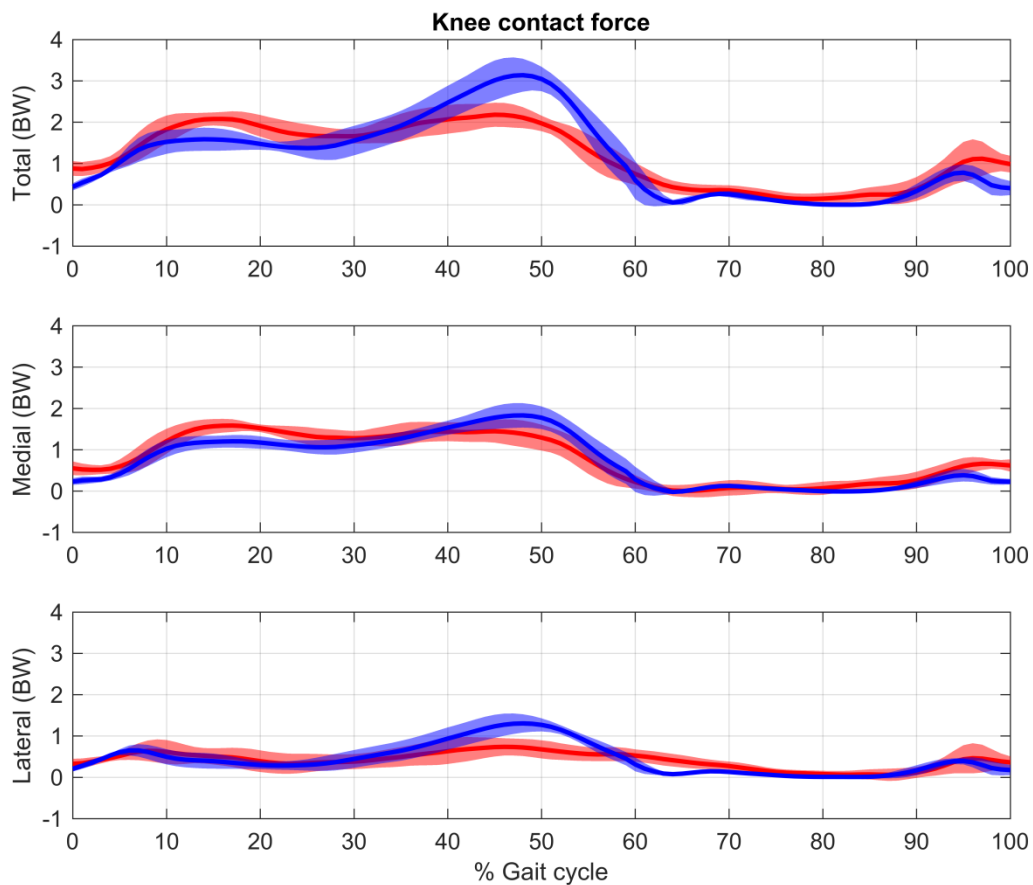


Figure S1: Measured knee contact forces (KCF) in red versus predicted KCF in blue. Solid line: average over the 3 subjects and 4 trials each. Shaded area ± 1 std.

Table S1: Quantification of the prediction accuracy against the Grand Challenge data. The results are presented as mean (± 1 std) over the 3 subjects and 4 trials each.

		Total	Medial	Lateral
R^2		0.75 (0.05)	0.78 (0.04)	0.42 (0.19)
RMS (BW)		0.52 (0.09)	0.31 (0.05)	0.32 (0.08)
Peak 1 (BW)	Predicted	1.72 (0.17)	1.24 (0.14)	0.68 (0.12)
	Measured	2.20 (0.13)	1.66 (0.13)	0.74 (0.19)
	Error	0.48 (0.24)	0.43 (0.21)	0.23 (0.08)
Peak 2 (BW)	Predicted	3.19 (0.40)	1.86 (0.29)	1.35 (0.20)
	Measured	2.34 (0.25)	1.64 (0.26)	0.82 (0.21)
	Error	0.85 (0.32)	0.22 (0.11)	0.53 (0.30)

Appendix B

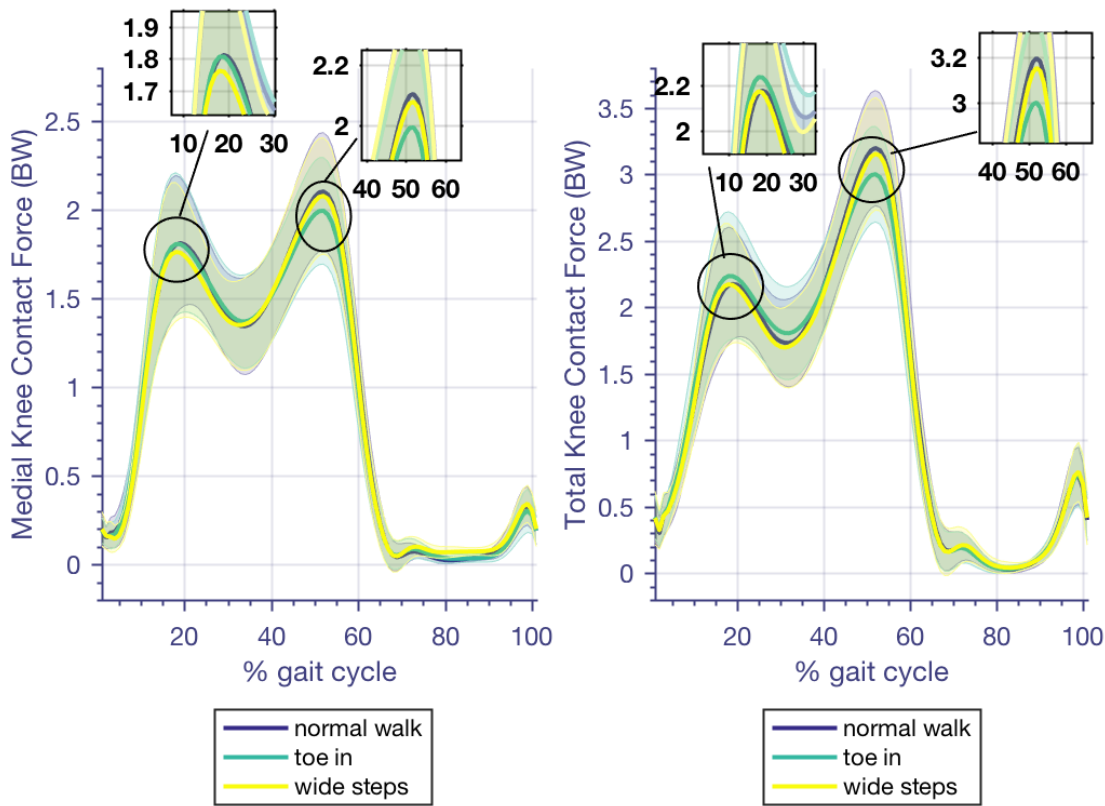


Figure S2: Medial and total knee contact forces during normal walking, toe-in gait and walking with wider steps.

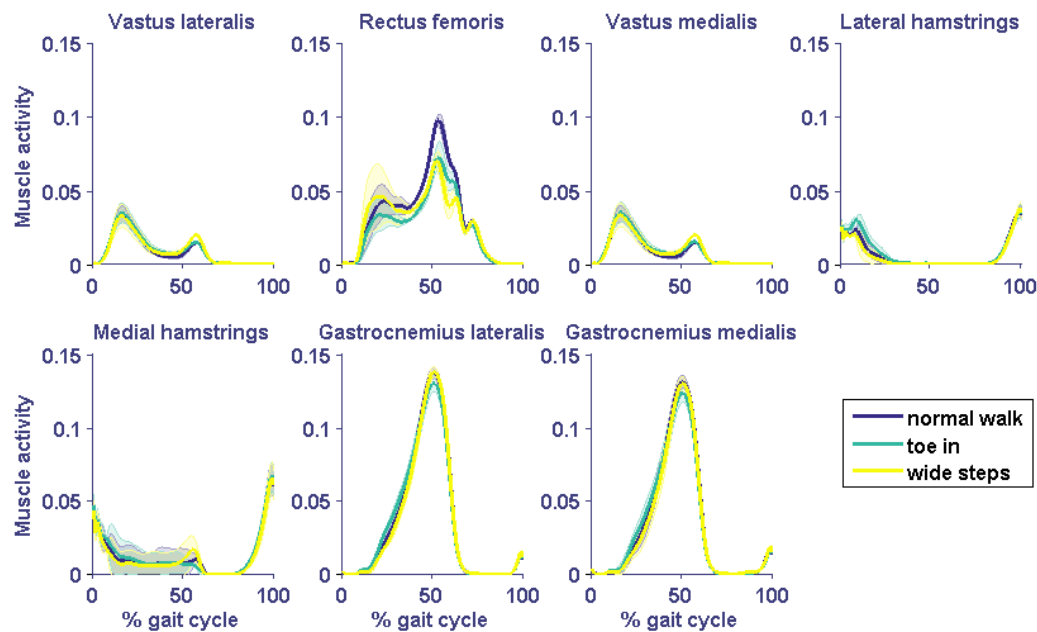


Figure S3: Activity (mean and standard deviation) of the knee spanning muscles calculated using the AnyBody model during normal walking, toe-in gait and wide steps gait. Note that the activity is defined as the force delivered by the muscle divided by the strength of the muscle (hence no units).

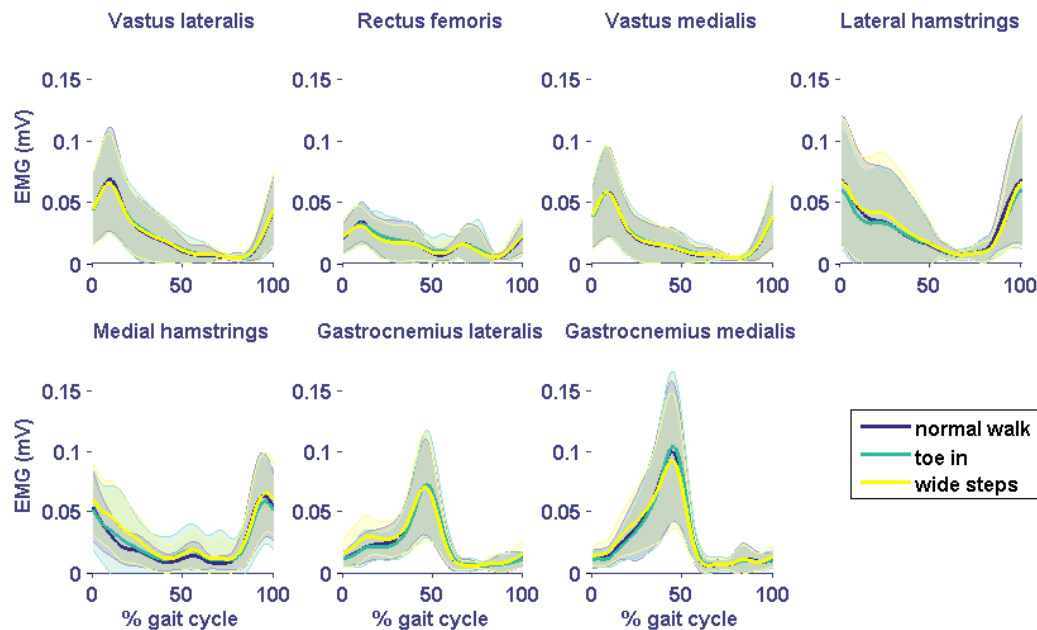


Figure S4: EMG activity (mean and standard deviation) of the knee spanning muscles during normal walking, toe-in gait and wide steps gait.

Acknowledgements

We would like to thank Mark de Zee and John Rasmussen at Aalborg University for their support for this work. We are also hugely grateful to Marjolein Booij and Jim Schrijvers for their help in collecting the data and Martin van der Esch for his help in recruiting the subjects. Finally, we would like to express our thanks to all of the participants who participated in this study.

Contributions

- 1) The conception and design of the study, or acquisition of the data, or analysis and interpretation of the data
conception and design of the study: RR, JvdN and JH
acquisition of the data: RR, JvdN
analysis and interpretation of the data: RR, MSA, JvdN
- 2) Drafting the article or revising it critically for important intellectual content
Drafting of the article: RR, MSA, JvdN
Revising it critically for important intellectual content: MSA, JvdN, JH, RR
- 3) Final approval of the version to be submitted: RR, MSA, JvdN, JH

Funding

This work was supported by the European Union Marie Curie Actions- Initial Training Networks (ITN), FP7-PEOPLE-2013-ITN under grant agreement no. 607510.

Competing interest statement

There are no competing interests to declare.

References

1. Miyazaki T, Wada M, Kawahara H, Sato M, Baba H, Shimada S. Dynamic load at baseline can predict radiographic disease progression in medial compartment knee osteoarthritis. *Ann Rheum Dis* 2002; 61: 617-622. 10.1136/ard.61.7.617
2. Bennell KL, Bowles K-A, Wang Y, Cicuttini F, Davies-Tuck M, Hinman RS. Higher dynamic medial knee load predicts greater cartilage loss over 12 months in medial knee osteoarthritis. *Annals of the Rheumatic Diseases* 2011.10.1136/ard.2010.147082
3. Foroughi N, Smith R, Vanwanseele B. The association of external knee adduction moment with biomechanical variables in osteoarthritis: a systematic review. *Knee* 2009; 16: 303-309.10.1016/j.knee.2008.12.007

4. Sharma L, Hurwitz DE, Thonar EJ, Sum JA, Lenz ME, Dunlop DD, et al. Knee adduction moment, serum hyaluronan level, and disease severity in medial tibiofemoral osteoarthritis. *Arthritis Rheum* 1998; 41: 1233-1240.10.1002/1529-0131(199807)41:7<1233::aid-art14>3.0.co;2-l
5. Chehab EF, Favre J, Erhart-Hledik JC, Andriacchi TP. Baseline knee adduction and flexion moments during walking are both associated with five year cartilage changes in patients with medial knee osteoarthritis. *Osteoarthritis and cartilage / OARS, Osteoarthritis Research Society* 2014; 22: 1833-1839.10.1016/j.joca.2014.08.009
6. Kutzner I, Trepczynski A, Heller MO, Bergmann G. Knee adduction moment and medial contact force--facts about their correlation during gait. *PLoS One* 2013; 8: e81036.10.1371/journal.pone.0081036
7. Creaby MW. It's not all about the knee adduction moment: the role of the knee flexion moment in medial knee joint loading. *Osteoarthritis Cartilage* 2015; 23: 1038-1040.10.1016/j.joca.2015.03.032
8. Manal K, Gardinier E, Buchanan TS, Snyder-Mackler L. A more informed evaluation of medial compartment loading: the combined use of the knee adduction and flexor moments. *Osteoarthritis Cartilage* 2015; 23: 1107-1111.10.1016/j.joca.2015.02.779
9. Benedetti MG, Catani F, Bilotta TW, Marcacci M, Mariani E, Giannini S. Muscle activation pattern and gait biomechanics after total knee replacement. *Clin Biomech (Bristol, Avon)* 2003; 18: 871-876.[https://doi.org/10.1016/S0268-0033\(03\)00146-3](https://doi.org/10.1016/S0268-0033(03)00146-3)
10. Delp SL, Anderson FC, Arnold AS, Loan P, Habib A, John CT, et al. OpenSim: open-source software to create and analyze dynamic simulations of movement. *IEEE Trans Biomed Eng* 2007; 54: 1940-1950.10.1109/tbme.2007.901024
11. Damsgaard M, Rasmussen J, Christensen ST, Surma E, de Zee M. Analysis of musculoskeletal systems in the AnyBody Modeling System. *Simulation Modelling Practice and Theory* 2006; 14: 1100-1111.<http://dx.doi.org/10.1016/j.simpat.2006.09.001>
12. Saxby DJ, Modenese L, Bryant AL, Gerus P, Killen B, Fortin K, et al. Tibiofemoral contact forces during walking, running and sidestepping. *Gait & Posture* 2016; 49: 78-85.10.1016/j.gaitpost.2016.06.014
13. Ogaya S, Naito H, Iwata A, Higuchi Y, Fuchioka S, Tanaka M. Knee adduction moment and medial knee contact force during gait in older people. *Gait Posture* 2014; 40: 341-345.10.1016/j.gaitpost.2014.04.205
14. Winby CR, Lloyd DG, Besier TF, Kirk TB. Muscle and external load contribution to knee joint contact loads during normal gait. *Journal of Biomechanics* 2009; 42: 2294-2300.<http://dx.doi.org/10.1016/j.jbiomech.2009.06.019>
15. Walter JP, Korkmaz N, Fregly BJ, Pandy MG. Contribution of tibiofemoral joint contact to net loads at the knee in gait. *J Orthop Res* 2015; 33: 1054-1060.10.1002/jor.22845
16. Marra MA, Vanheule V, Fluit R, Koopman BH, Rasmussen J, Verdonschot N, et al. A subject-specific musculoskeletal modeling framework to predict in vivo mechanics of total knee arthroplasty. *J Biomech Eng* 2015; 137: 020904.10.1115/1.4029258
17. Simic M, Hinman RS, Wrigley TV, Bennell KL, Hunt MA. Gait modification strategies for altering medial knee joint load: a systematic review. *Arthritis Care Res (Hoboken)* 2011; 63: 405-426.10.1002/acr.20380
18. Richards R, van den Noort JC, Dekker J, Harlaar J. Gait Retraining With Real-Time Biofeedback to Reduce Knee Adduction Moment: Systematic Review of Effects and Methods Used. *Archives of Physical Medicine and Rehabilitation* 2017; 98: 137-150.10.1016/j.apmr.2016.07.006
19. Hunt MA, Takacs J. Effects of a 10-week toe-out gait modification intervention in people with medial knee osteoarthritis: a pilot, feasibility study. *Osteoarthritis Cartilage* 2014; 22: 904-911.10.1016/j.joca.2014.04.007
20. Shull PB, Silder A, Shultz R, Dragoo JL, Besier TF, Delp SL, et al. Six-week gait retraining program reduces knee adduction moment, reduces pain, and improves function for

- individuals with medial compartment knee osteoarthritis. *J Orthop Res* 2013; 31: 1020-1025.10.1002/jor.22340
21. Kinney AL, Besier TF, Silder A, Delp SL, D'Lima DD, Fregly BJ. Changes in in vivo knee contact forces through gait modification. *J Orthop Res* 2013; 31: 434-440.10.1002/jor.22240
 22. Walter JP, D'Lima DD, Colwell CW, Jr., Fregly BJ. Decreased knee adduction moment does not guarantee decreased medial contact force during gait. *J Orthop Res* 2010; 28: 1348-1354.10.1002/jor.21142
 23. Schwachmeyer V, Kutzner I, Borschein J, Bender A, Dymke J, Bergmann G. Medial and lateral foot loading and its effect on knee joint loading. *Clin Biomech (Bristol, Avon)* 2015; 30: 860-866.10.1016/j.clinbiomech.2015.06.002
 24. Fregly BJ, D'Lima DD, Colwell CW, Jr. Effective gait patterns for offloading the medial compartment of the knee. *J Orthop Res* 2009; 27: 1016-1021.10.1002/jor.20843
 25. Shull PB, Shultz R, Silder A, Dragoo JL, Besier TF, Cutkosky MR, et al. Toe-in gait reduces the first peak knee adduction moment in patients with medial compartment knee osteoarthritis. *Journal of Biomechanics* 2013; 46: 122-128.<http://dx.doi.org/10.1016/j.jbiomech.2012.10.019>
 26. Bhatnagar T, Jenkyn TR. Internal kinetic changes in the knee due to high tibial osteotomy are well-correlated with change in external adduction moment: an osteoarthritic knee model. *J Biomech* 2010; 43: 2261-2266.10.1016/j.jbiomech.2010.05.001
 27. Richards RE, van den Noort JC, van der Esch M, Booij MJ, Harlaar J. Effect of real-time biofeedback on peak knee adduction moment in patients with medial knee osteoarthritis: Is direct feedback effective? *Clinical Biomechanics* 2017.10.1016/j.clinbiomech.2017.07.004
 28. Lund ME, Andersen MS, de Zee M, Rasmussen J. Scaling of musculoskeletal models from static and dynamic trials. *International Biomechanics* 2015; 2: 1-11.10.1080/23335432.2014.993706
 29. Klein Horsman MD, Koopman HF, van der Helm FC, Prose LP, Veeger HE. Morphological muscle and joint parameters for musculoskeletal modelling of the lower extremity. *Clin Biomech (Bristol, Avon)* 2007; 22: 239-247.10.1016/j.clinbiomech.2006.10.003
 30. Wu G, Siegler S, Allard P, Kirtley C, Leardini A, Rosenbaum D, et al. ISB recommendation on definitions of joint coordinate system of various joints for the reporting of human joint motion part I: ankle, hip, and spine. *Journal of Biomechanics* 2002; 35: 543-548.[https://doi.org/10.1016/S0021-9290\(01\)00222-6](https://doi.org/10.1016/S0021-9290(01)00222-6)
 31. Grood ES, Suntay WJ. A joint coordinate system for the clinical description of three-dimensional motions: application to the knee. *J Biomech Eng* 1983; 105: 136-144.doi:10.1115/1.3138397
 32. Seedhom BB, Longton EB, Wright V, Dowson D. Dimensions of the knee. Radiographic and autopsy study of sizes required by a knee prosthesis. *Ann Rheum Dis* 1972; 31: 54-58
 33. Meyer AJ, D'Lima DD, Besier TF, Lloyd DG, Colwell CW, Jr., Fregly BJ. Are external knee load and EMG measures accurate indicators of internal knee contact forces during gait? *J Orthop Res* 2013; 31: 921-929.10.1002/jor.22304
 34. Koblauch H, Heilskov-Hansen T, Alkjaer T, Simonsen EB, Henriksen M. The effect of foot progression angle on knee joint compression force during walking. *J Appl Biomech* 2013; 29: 329-335.<https://doi.org/10.1123/jab.29.3.329>
 35. Zhao D, Banks SA, Mitchell KH, D'Lima DD, Colwell CW, Jr., Fregly BJ. Correlation between the knee adduction torque and medial contact force for a variety of gait patterns. *J Orthop Res* 2007; 25: 789-797.10.1002/jor.20379
 36. Ogaya S, Naito H, Iwata A, Higuchi Y, Fuchioka S, Tanaka M. Toe-Out Gait Decreases the Second Peak of the Medial Knee Contact Force. *Journal of Applied Biomechanics* 2015; 31: 275-280.10.1123/jab.2014-0310
 37. Schlotman TES, P.B.; Reinbolt, J.A. . Decreasing knee joint contact loads via toe-in gait for patients with knee osteoarthritis. 40th Annual Meeting of the American Society of Biomechanics Raleigh, NC2016.

38. Koo S, Andriacchi TP. A comparison of the influence of global functional loads vs. local contact anatomy on articular cartilage thickness at the knee. *Journal of biomechanics* 2007; 40: 2961-2966.10.1016/j.jbiomech.2007.02.005
39. Erhart-Hledik JC, Favre J, Andriacchi TP. New insight in the relationship between regional patterns of knee cartilage thickness, osteoarthritis disease severity, and gait mechanics. *Journal of Biomechanics* 2015; 48: 3868-3875.<https://doi.org/10.1016/j.jbiomech.2015.09.033>
40. Robon MJ, Perell KL, Fang M, Guerro E. The relationship between ankle plantar flexor muscle moments and knee compressive forces in subjects with and without pain. *Clinical Biomechanics* 2000; 15: 522-527.[http://dx.doi.org/10.1016/S0268-0033\(00\)00007-3](http://dx.doi.org/10.1016/S0268-0033(00)00007-3)
41. Meireles S, Wesseling M, Smith CR, Thelen DG, Verschueren S, Jonkers I. Medial knee loading is altered in subjects with early osteoarthritis during gait but not during step-up-and-over task. *PLoS One* 2017; 12: e0187583.10.1371/journal.pone.0187583
42. Liu X, Zhang M. Redistribution of knee stress using laterally wedged insole intervention: Finite element analysis of knee-ankle-foot complex. *Clin Biomech (Bristol, Avon)* 2013; 28: 61-67.10.1016/j.clinbiomech.2012.10.004
43. Halonen K, Dzialo CM, Mannisi M, Venäläinen M, De Zee M, Andersen MS. Workflow assessing the effect of gait alterations on stresses in the medial tibial cartilage – combined musculoskeletal modelling and finite element analysis. *Scientific Reports* 2017; In Press
44. van de Bunt F, Emanuel KS, Wijffels T, Kooren PN, Kingma I, Smit TH. A novel physiological testing device to study knee biomechanics in vitro. *Knee* 2017.10.1016/j.knee.2017.04.006
45. Rutherford DJ, Hubley-Kozey CL, Stanish WD, Dunbar MJ. Neuromuscular alterations exist with knee osteoarthritis presence and severity despite walking velocity similarities. *Clin Biomech (Bristol, Avon)* 2011; 26: 377-383.10.1016/j.clinbiomech.2010.11.018
46. Dzialo CM, Mannisi M, Marra M, Richards R, Telfer S, Woodburn J, et al. A subject-specific analysis framework to investigate gait alterations. *Osteoarthritis and Cartilage* 2016; 24: S126.10.1016/j.joca.2016.01.247
47. Gerus P, Sartori M, Besier TF, Fregly BJ, Delp SL, Banks SA, et al. Subject-specific knee joint geometry improves predictions of medial tibiofemoral contact forces. *J Biomech* 2013; 46: 2778-2786.10.1016/j.jbiomech.2013.09.005
48. Heiden TL, Lloyd DG, Ackland TR. Knee joint kinematics, kinetics and muscle co-contraction in knee osteoarthritis patient gait. *Clin Biomech (Bristol, Avon)* 2009; 24: 833-841.10.1016/j.clinbiomech.2009.08.005
49. Hodges PW, van den Hoorn W, Wrigley TV, Hinman RS, Bowles KA, Cicuttini F, et al. Increased duration of co-contraction of medial knee muscles is associated with greater progression of knee osteoarthritis. *Man Ther* 2016; 21: 151-158.10.1016/j.math.2015.07.004
50. Fregly BJ, Besier TF, Lloyd DG, Delp SL, Banks SA, Pandy MG, et al. Grand challenge competition to predict in vivo knee loads. *J Orthop Res* 2012; 30: 503-513.10.1002/jor.22023