



AALBORG UNIVERSITY
DENMARK

Aalborg Universitet

Inorganic and Hybrid Glasses From Zeolitic Frameworks

Greaves, G.N.; Bennett, T.D.; Tan, J.C.; Yue, Yuanzheng

Publication date:
2015

Document Version
Publisher's PDF, also known as Version of record

[Link to publication from Aalborg University](#)

Citation for published version (APA):

Greaves, G. N., Bennett, T. D., Tan, J. C., & Yue, Y. (2015). *Inorganic and Hybrid Glasses From Zeolitic Frameworks*. Abstract from ICG Annual Meeting, Bangkok, Thailand.

General rights

Copyright and moral rights for the publications made accessible in the public portal are retained by the authors and/or other copyright owners and it is a condition of accessing publications that users recognise and abide by the legal requirements associated with these rights.

- Users may download and print one copy of any publication from the public portal for the purpose of private study or research.
- You may not further distribute the material or use it for any profit-making activity or commercial gain
- You may freely distribute the URL identifying the publication in the public portal -

Take down policy

If you believe that this document breaches copyright please contact us at vbn@aub.aau.dk providing details, and we will remove access to the work immediately and investigate your claim.

Inorganic and Hybrid Glasses From Zeolitic Frameworks

G. N. Greaves^{a,b}, T. D. Bennett^a, J. C. Tan^c, Y. Z. Yue^d

^aDepartment of Materials Science, University of Cambridge, CB3 0FS, UK

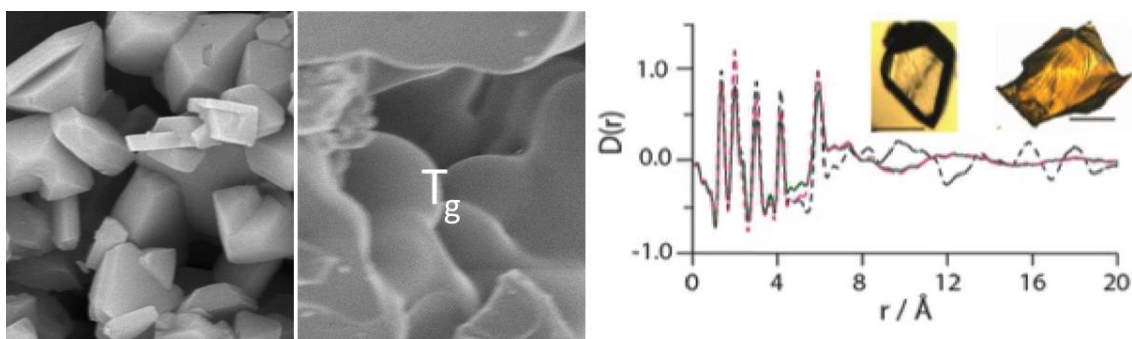
^bState Key Laboratory of Silicate Materials for Architectures, Wuhan University of Technology, 430070, China

^cDepartment of Engineering Science, University of Oxford, UK

^{b,d}Department of Chemistry and Bioscience, Aalborg University, Denmark

Keywords: Zeolites, Metal-Organic Frameworks, Melt-quenched Glasses, Amorphization

Zeolites are metastable crystals with enthalpy greater than melt-quenched glasses of the same composition¹. Since 2003 we have pioneered the collapsing of zeolites to create amorphous phases². These glasses form via low energy routes - close to the glass transition T_g at ambient pressure, or with modest pressures at room temperature. By following such processes dynamically we discovered a low density low enthalpy amorphous phase approximating to a 'perfect glass', being topologically equivalent to the starting zeolite and sharing collective THz vibrations³. Amorphization then proceeds via a liquid-liquid transition to a high density polyamorph of higher enthalpy. Subsequent thermal processing, often results in crystallization before final melting, from which a melt-quenched glass can be formed – all with the same inorganic composition. Very recently we have discovered⁴ that similar processes occur in metal organic frameworks (MOFs)⁵, when they are thermobarically stressed. These procedures are leading to new glasses, including melt-quenched hybrid glasses, with organic-inorganic structures - for example, Zn^{2+} nodes interlinked by imidazolate ($C_3H_3N_2^-$) ions. Moreover, by connecting amorphization and melting phenomena together with respect to network topology, hypothetical melting points, based on predicted T_g values, can be used to explain why some MOF structures have achievable melting temperatures while others decompose first.



1. A. Navrotsky and Z-R. Tian, *Chem. Eur. J.* **7** (2001) 769.
2. G. N. Greaves, et al., *Nature Mater.* **2** (2003) 622-629.
3. G. N. Greaves, et al., *Science* **308** (2005) 1299-1302.
4. T. D. Bennett, et al., *Nature Commun.* **6** (2015) 8079.
5. T. D. Bennett and A. K. Cheetham, *Acc. Chem. Res.*, **47** (2014) 1555-1562.