



**AALBORG UNIVERSITY**  
DENMARK

**Aalborg Universitet**

## **Incidence and prevalence of patellofemoral pain**

*A systematic review and meta-analysis*

Smith, Benjamin E; Selfe, James; Thacker, Damian; Hendrick, Paul; Bateman, Marcus; Moffatt, Fiona; Rathleff, Michael Skovdal; Smith, Toby O; Logan, Pip

*Published in:*  
PLOS ONE

*DOI (link to publication from Publisher):*  
[10.1371/journal.pone.0190892](https://doi.org/10.1371/journal.pone.0190892)

*Creative Commons License*  
CC BY 4.0

*Publication date:*  
2018

*Document Version*  
Publisher's PDF, also known as Version of record

[Link to publication from Aalborg University](#)

*Citation for published version (APA):*  
Smith, B. E., Selfe, J., Thacker, D., Hendrick, P., Bateman, M., Moffatt, F., Rathleff, M. S., Smith, T. O., & Logan, P. (2018). Incidence and prevalence of patellofemoral pain: A systematic review and meta-analysis. *PLOS ONE*, 13(1), Article e0190892. <https://doi.org/10.1371/journal.pone.0190892>

### **General rights**

Copyright and moral rights for the publications made accessible in the public portal are retained by the authors and/or other copyright owners and it is a condition of accessing publications that users recognise and abide by the legal requirements associated with these rights.

- Users may download and print one copy of any publication from the public portal for the purpose of private study or research.
- You may not further distribute the material or use it for any profit-making activity or commercial gain
- You may freely distribute the URL identifying the publication in the public portal -

### **Take down policy**

If you believe that this document breaches copyright please contact us at [vbn@aub.aau.dk](mailto:vbn@aub.aau.dk) providing details, and we will remove access to the work immediately and investigate your claim.

RESEARCH ARTICLE

# Incidence and prevalence of patellofemoral pain: A systematic review and meta-analysis

Benjamin E. Smith<sup>1,2\*</sup>, James Selfe<sup>3</sup>, Damian Thacker<sup>4</sup>, Paul Hendrick<sup>5</sup>, Marcus Bateman<sup>1</sup>, Fiona Moffatt<sup>5</sup>, Michael Skovdal Rathleff<sup>6,7</sup>, Toby O. Smith<sup>8</sup>, Pip Logan<sup>2</sup>

**1** Derby Teaching Hospitals NHS Foundation Trust, London Road Community Hospital, Derby, United Kingdom, **2** Division of Rehabilitation and Ageing, School of Medicine, University of Nottingham, Nottingham, United Kingdom, **3** Department of Health Professions, Manchester Metropolitan University, Manchester, United Kingdom, **4** PhysioWorks (Sheffield), Sheffield Teaching Hospitals NHS Foundation Trust, Sheffield, United Kingdom, **5** Division of Physiotherapy and Rehabilitation Sciences, School of Health Sciences, University of Nottingham, Nottingham University Hospitals (City Campus), Nottingham, United Kingdom, **6** Research Unit for General Practice in Aalborg, Department of Clinical Medicine at Aalborg University, Aalborg, Denmark, **7** Department of Occupational Therapy and Physiotherapy, Department of Clinical Medicine, Aalborg University Hospital, Aalborg, Denmark, **8** Nuffield Department of Orthopaedics, Rheumatology and Musculoskeletal Sciences, University of Oxford, Oxford, United Kingdom

\* [benjamin.smith3@nhs.net](mailto:benjamin.smith3@nhs.net)



**OPEN ACCESS**

**Citation:** Smith BE, Selfe J, Thacker D, Hendrick P, Bateman M, Moffatt F, et al. (2018) Incidence and prevalence of patellofemoral pain: A systematic review and meta-analysis. *PLoS ONE* 13(1): e0190892. <https://doi.org/10.1371/journal.pone.0190892>

**Editor:** Hazel RC Screen, Queen Mary University of London, UNITED KINGDOM

**Received:** October 12, 2017

**Accepted:** December 21, 2017

**Published:** January 11, 2018

**Copyright:** © 2018 Smith et al. This is an open access article distributed under the terms of the [Creative Commons Attribution License](https://creativecommons.org/licenses/by/4.0/), which permits unrestricted use, distribution, and reproduction in any medium, provided the original author and source are credited.

**Data Availability Statement:** All relevant data are within the paper.

**Funding:** This report is independent research arising from a Clinical Doctoral Research Fellowship, Benjamin E Smith, ICA-CDRF-2015-01-002 supported by the National Institute for Health Research (NIHR) and Health Education England (HEE). The views expressed in this publication are those of the authors and not necessarily those of the NHS, the NIHR, HEE or the Department of Health.

## Abstract

### Background

Patellofemoral pain is considered one of the most common forms of knee pain, affecting adults, adolescents, and physically active populations. Inconsistencies in reported incidence and prevalence exist and in relation to the allocation of healthcare and research funding, there is a clear need to accurately understand the epidemiology of patellofemoral pain.

### Methods

An electronic database search was conducted, as well as grey literature databases, from inception to June 2017. Two authors independently selected studies, extracted data and appraised methodological quality. If heterogeneous, data were analysed descriptively. Where studies were homogeneous, data were pooled through a meta-analysis.

### Results

23 studies were included. Annual prevalence for patellofemoral pain in the general population was reported as 22.7%, and adolescents as 28.9%. Incidence rates in military recruits ranged from 9.7–571.4/1,000 person-years, amateur runners in the general population at 1080.5/1,000 person-years and adolescents amateur athletes 5.1%–14.9% over 1 season. One study reported point prevalence within military populations as 13.5%.

The pooled estimate for point prevalence in adolescents was 7.2% (95% Confidence Interval: 6.3%–8.3%), and in female only adolescent athletes was 22.7% (95% Confidence Interval 17.4%–28.0%).

**Competing interests:** The authors have declared that no competing interests exist.

## Conclusion

This review demonstrates high incidence and prevalence levels for patellofemoral pain. Within the context of this, and poor long term prognosis and high disability levels, PFP should be an urgent research priority.

## PROSPERO registration

[CRD42016038870](https://doi.org/10.1186/1745-6215-42016038870)

## Introduction

There are over 100,000 primary care appointments a day in the United Kingdom (UK) for musculoskeletal (MSK) pain disorders [1], with an associated £7.4 billion cost annually to the UK economy through absenteeism [2]. In the United States an estimated 126.6 million Americans suffer from a musculoskeletal disorder, putting a burden onto the economy with an estimated cost of \$213 billion annually through healthcare costs and sickness absence [3]. Knee pain is the second most prevalent condition, with patellofemoral pain (PFP) being considered one of the most common forms of knee pain [4], with a prevalence cited between 15% to 45% [5]. It is described as non-traumatic in nature, with diffuse anterior knee pain on activities that load the joint such as squatting, running, climbing and descending stairs [4].

Variations in reported incidence and prevalence may be due to differing populations assessed, inconsistencies in the diagnosis and lack of high quality evidence on which to base assessment [6,7]. PFP is thought to affect the general population [8], and more specifically adolescents [9], young active adults [10], elite athletes [11,12], and military recruits [13]; with higher incidence and prevalence rates often cited among females [13,14]. There is no definitive gold standard method to clinically diagnose PFP [15]. Diagnosis has historically been based on detailed subjective and objective assessments, with pain on a number of special tests including the patellofemoral compression test, palpation of the patella and pain of resisted knee extension [13,16–18]. It is likely that this method of diagnosis could under-estimate the true incidence or prevalence rates, since many people with PFP reduce or withdraw from their aggravating activity [19], and consequently pain on palpation may only identify those with higher levels of pain, or still participating in activities. Alternatively, due to high sensitivity of historical tests, it may be that this approach results in an over-estimation instead [20]. Recently PFP has been re-defined as: self-reported pain around or behind the patella aggravated by activities that loads the joint, e.g. squats, stairs, running or jumping; with special tests and pain on prolonged rest additional but not essential [4].

To date, no systematic reviews have been published on the incidence and prevalence for PFP; with publications often employing an indirect course of secondary and even tertiary referencing when citing incidence or prevalence data for PFP [7]. In relation to clinical decision-making, and the allocation of healthcare and research funding, there is a clear need to accurately understand the epidemiology of this problem. Therefore, in the context of the current uncertainty regarding PFP, this systematic review synthesises epidemiological data using a contemporary case definition and clear population classifications [4], to gain an understanding of incidence and prevalence data for this condition.

## Method

This systematic review followed the recommendations of the meta-analyses in observational studies (MOOSE) guidance statement [21], the recommendations of the PRISMA statement

where relevant [22], and was registered with the International Prospective Register of Systematic Reviews (PROSPERO reference CRD42016038870).

### Data sources and search strategy

An electronic database search was conducted on titles and abstracts from inception to June 2017 using the following databases: Medline via PubMed, EMBASE, the Cumulative Index to Nursing and Allied Health Literature (CINAHL), and Web of Science. For the keywords search strategy used see Table 1. The database searches were accompanied by hand searches of the reference list of included articles, as well as contacting authors for all included and potentially included studies. The grey literature and ongoing studies were searched using the following databases: OpenGrey, WHO International Clinical Trials Registry Platform, ClinicalTrials.gov and the NIHR portfolio.

Inclusion criteria included study population of any age and any setting with signs and symptoms of PFP, defined as; anterior or retropatellar pain reported on at least two of the following activities; prolonged sitting, ascending or descending stairs, squatting, jumping and running [4]. There was no restriction on the type of setting for potential included papers.

Exclusion criteria included: if the study population was selected from a specific disease area (e.g. diabetes, rheumatoid arthritis, osteoarthritis); if the study population comprised of participants with other knee pathology (e.g. knee ligamentous instability, history of patella dislocations, true knee locking or giving way, patella or iliotibial tract tendinopathy, osteoarthritis).

Included studies were required to report incidence or prevalence data, and had to be published in English or where an English translation was available.

### Study selection

One reviewer (BES) undertook the searches. Titles and abstracts were screened by one reviewer (BES), with potential eligible papers retrieved and independently screened by two reviewers (BES & JS). Initial inclusion agreement was 83%. Five disagreements were due to case definition [9,12,23–25], and were discussed and resolved through consensus. Seven further case definition disagreements not resolved through consensus were resolved through a third reviewer (PH) [26–32].

### Data extraction

One reviewer (BES) extracted data relating to study design, population and setting, case definition, incidence and prevalence data, which was independently verified by a second reviewer (DT).

### Quality appraisal

In the absence of any validated quality assessment tools [33], two reviewers (BES & JS) independently appraised methodological quality using a tool developed by Hayden et al. [34] for the evaluation of the quality of prognostic studies in systematic reviews, and adapted by Luime

Table 1. Search strategy.

	Search Term
1	"anterior knee pain" or "AKP" or "patellofemoral pain syndrome" or "PFPS" or "patellofemoral pain" or "PFP"
2	Inciden\$ or prevalen\$ or cohort\$ or prospective or epidemiolog\$ or trial
3	1 and 2 limited to English language

<https://doi.org/10.1371/journal.pone.0190892.t001>

et al. [35] for evaluation of the quality of epidemiological studies in systematic reviews. This assessed appropriateness and reporting of: the study population, case definition, and the response rate and follow-up of the cohort. To be judged as 'high quality', all three criteria had to be met; with male and females represented, a clear reproducible case definition relevant to our inclusion criteria and a response rate above 75%. Percentage agreement between the two reviewers was 94%, all disagreements were discussed and resolved through consensus.

## Data synthesis

Study heterogeneity was assessed through visual examination of the data extraction table on details related to participant characteristics, case definition, study design and process of the included studies. If heterogeneous, data were analysed narratively to assess trends in prevalence and incidence across the studies. When data allowed, incidence rates were converted to cases per 1,000 person-years, with associated 95% confidence intervals (CI) [36]. Where studies were homogeneous, data were pooled through a meta-analysis. Statistical heterogeneity was assessed using the  $I^2$  statistic where 0% to 25% was low, 26% to 74% moderate and 75% and over high statistical heterogeneity [37]. When outcomes presented with low statistical heterogeneity, data were pooled using a fixed-effects model, with moderate or high statistical heterogeneity a random-effects model was adopted. All data analyses were performed using Stata version 14.0 (College Station, TX, USA) [38].

## Results

### Study selection

The search results are presented in Fig 1. From a total of 7,746 titles 66 papers were potentially eligible. One unpublished trial was identified, however the author declined to share the details. 43 full-text articles were excluded; 37 due to case definition not meeting criteria [10,25,39–73], three due to no prevalence or incidence data being recorded [23,74,75], and two because they were a replication of another included study [76,77]. In one study participants were tested longitudinally over multiple years, with participants being eligible to enrol multiple times, and therefore was excluded [78]. 23 studies met the eligibility criteria and were included in the final review, 12 reporting incidence data [13,16–18,26,28,30,32,79–82], and 13 reporting prevalence data [5,9,11–13,16,24,27,29,31,83–85]. Of the included 23 papers, 12 authors were contacted for clarification on: raw data extraction [11,26,28,29,79,80,84], and participant information [5,12,13,18,31]. Eight responded and gave further details, where available [5,12,13,28,29,31,80,84]. The authors that were uncontactable, or did not have available information account for the 'unknown' items in the characteristics table.

### Study characteristics

A summary of the main characteristics of the included studies, with the main results can be found in Tables 2 and 3 for incidence and prevalence respectively. Six papers within the military setting ( $n = 4,199$ ) reported incidence data [13,17,32,79–81], two papers reported incidence data within the general adult population setting ( $n = 140$ ) [26,82], and four papers reported incidence data within the general adolescent population ( $n = 985$ ) [16,18,28,30]. One paper within the military setting ( $n = 1,525$ ) reported prevalence data [13], three papers reported prevalence data within the general adult population setting ( $n = 1,1011$ ) [5,24,83], six papers reported prevalence data the general adolescent population setting ( $n = 5,090$ ) [9,16,27,29,31,84], and three papers reported prevalence data the elite athlete setting ( $n = 568$ ) [11,12,85].

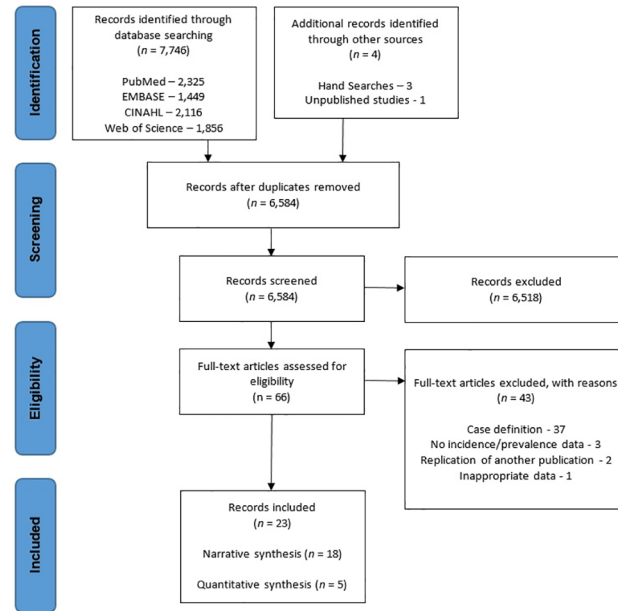


Fig 1. PRISMA 2009 flow diagram.

<https://doi.org/10.1371/journal.pone.0190892.g001>

As a result of study heterogeneity, with the exception of five studies that reported prevalence data in the adolescent population, a narrative synthesis was conducted.

### Quality appraisal

The results of the methodological quality appraisal can be found in Table 4. 43.5% (10/23) of the included studies were high quality (quality score = 3/3), according to our definition. 26.1% (6/23) recorded a quality score of 2/3, and seven studies (30.4%) recorded a score of 1/3. The main risk of bias and low methodological quality was due to ten studies having populations comprising only male or female participants, and one study not describing the participant's sex [11,16–18,26,29–31,80,82,85]. Three studies had a response rate of below 75% [18,27,28]; two had an unknown response rate [11,85]; and four studies had imprecise case definitions [17,27,30,31]; all were scored low accordingly.

### Military

**Incidence.** Five studies reported incidence rates for military recruits, with a predominantly male population, that ranged from 9.7–571.4 cases per 1,000 person-years [17,32,79–81]. One study, with a mixed female and male military population, reported an incidence rate of 22 cases per 1,000 person-years, with female recruits being reported as 33 and males as 15, cases per 1,000 person-years [13].

**Prevalence.** One study with a mixed female and male military recruit population reported a point prevalence of 13.5%, females 15.3% and males 12.3% [13].

### General adult population

**Incidence.** One study with novice recreational female runners recorded a 10-week incidence rate of 1080.5 cases per 1,000 person-years [82]. One study with female amateur collegiate athletes (mean age 19.4) reported an athletic season incidence rate of 1.9%.

Table 2. Incidence.

Study	Quality score	Study population	Sample Size	Case definition	Response rate	Results
<b>Military</b>						
Boling (2010) [13]	3/3	United States Naval Academy (USNA) (39.8% female; mean age unknown, range 18–25*).	1,525	Retropatellar pain of any duration with two of the following activities: ascending/descending stairs, hopping/jogging, prolonged sitting with flexed knees, kneeling, and squatting. Plus one of the following: pain on palpation of medial or lateral patellar facets, or pain on palpation of the anterior portion of the medial or lateral femoral condyles.	1,319/1,525 (86.5%)	22/1,000 person-years (95% CI: 15/1,000, 29/1,000 person-years). Female incidence was 33/1,000 person-years (95% CI: 20/1,000, 45/1,000 person-years) and in males was 15/1,000 person-years (95% CI: 7/1,000, 22/1,000 person-years).
Coppack (2011) [79]	2/3	British Army recruits, United Kingdom (27.9% female, mean age 19.6).	743	Pain from at least 2 of the following: prolonged sitting, stair climbing, squatting, running, kneeling, and hopping/jumping; insidious onset of symptoms unrelated to a traumatic incident; and presence of pain on palpation of the patellar facets, on step down from a 25-cm step, or during a double-legged squat.	743/743 (100%)	14 week incidence 36 / 743 (4.8%; 95% CI, 3.5–6.7). 180/1,000 person-years (95% CI: 127.9/1,000, 246.5/1,000 person-years).
Kaufman (1999) [80]	2/3	United States Navy Recruits. (100% male; mean age 22.5 years)	449	Ill-defined ache of insidious onset localized to the peripatellar area, plus pain on palpation of patella and peripatellar soft tissues.	449/449* (100%)	25 week incidence 35/449 (7.8%). 162.1/1,000 person-years (95% CI: 114.7/1,000, 223.0/1,000 person-years).
Milgrom (1991) [17]	1/3	Infantry recruits, Israel (100% male; age unknown).	390	Subjective complaint of anterior knee pain, non-traumatic, with objective finding of pain on patellofemoral compression test and palpation of patella borders.	390/390 (100%)	14 week incidence 60/390 (15.4%). 571.4/1,000 person-years (95% CI: 439.9/1,000, 730.5/1,000 person-years).
Thijs (2007) [32]	3/3	Belgian Royal Military Academy recruits (22.6% female; mean age 19).	84	Two of the following: pain on direct compression of the patella with the knee in full extension, tenderness of the posterior surface of the patella on palpation, pain on resisted knee extension, or pain with isometric quadriceps muscle contraction.	84/105 (80%)	6 week incidence 36/84 (42.9%). 9.7/1,000 person-years (95% CI: 6.9/1,000, 13.3/1000 person-years).
Wills (2004) [81]	3/3	British Army Recruits (95.2% male; median age 19.4)	1,008	Pain around the anterior aspect of the knee, insidious onset and no evidence of trauma	926/1,008 (91.9%)	12 week incidence 81/926 (8.7%). 379.1/1,000 person-years (95% CI: 303.0/1,000, 468.7/1,000 person-years).
<b>General Adult Population</b>						
Devan (2004) [26]	2/3	Female amateur collegiate hockey, basketball and athletic athletes, USA (mean age 19.4).	63	Pain in or under patella while running, going up or down stairs; with diffuse pain on palpation.	53/63 (84.1%)	1 athletic season incidence 1/53 (1.9%).
Thijs (2011) [82]	2/3	Female novice recreational runners on a 10 week start to run programme, Belgium (mean age 38.4)	77	Retropatellar pain during and/or after activities such as running, squatting, kneeling, going up and down stairs, cycling, prolonged sitting with the knee in flexion, or rising from a seated position. And 2 of the following: pain while compressing the patella, tenderness of patella on palpation, painful resisted knee extension and pain when isometrically contracting the quadriceps 15° flexion.	77/77 (100%)	10 week incidence 16/77 (20.8%). 1080.5/1,000 person-years (95% CI: 639.6/1,000, 1717.0/1,000 person-years).
<b>General Adolescents Population</b>						
Finnoff (2011) [28]	2/3	High School runners aged 14–18, USA (45.9% female; mean age 16)	98	Anterior knee pain that was exacerbated by deep knee bending and/or climbing stairs plus pain on one of the following: (1) pressure over the subject's distal quadriceps tendon combined with active contraction of his or her quadriceps muscle (patellar grind test) or (2) direct palpation of the medial or lateral patellar facets.	98/1500 (6.5%)	1 running season incidence 5/98 (5.1%).

(Continued)

Table 2. (Continued)

Study	Quality score	Study population	Sample Size	Case definition	Response rate	Results
Herbst (2015) [30]	1/3	Female adolescent basketball players in middle and high school, USA (mean age 12.7 years).	255	Anterior Knee Pain Scale score < 100; International Knee Documentation Committee (IKDC) form, standardized history and physician-administered physical examination.	255/329 (77.5%)	1 season incidence 38/255 (14.9%). 0.97 per 1,000 athletic exposures (1 game or training session).
Myer (2010) [16]	2/3	Female adolescent athletes in middle and high school, USA (mean age 13.4 years)	152	Anterior Knee Pain Scale score < 100; knee pain with or shortly following activity and also if anterior knee tenderness was recent.	145/152 (95.4%)	1 season incidence 14/145 (9.7%). 1.09 per 1,000 athletic exposures (1 game or training session).
Witvrouw (2000) [18]	1/3	Students taking physical education, aged 17–21 in Belgium (sex unknown; mean age 18.6)	480	Retropatellar pain > 6 weeks during physical activities such as jumping, running, squatting, and going up or down stairs. Plus two of the following; pain on direct compression of the patella, tenderness of the posterior surface of the patella, pain on resisted knee extension, and pain with isometric quadriceps contraction.	282/480 (58.8%)	2 year incidence 24/282 (8.5%). 42.6/1,000 person-years (95% CI: 27.9/1,000, 62.4/1,000 person-years). Female incidence was 13/131 (9.9%), 49.6/1,000 person-years (95% CI: 27.6/1,000, 82.7/1,000 person-years); male was 11/151 (7.3%), 36.4/1,000 person-years (96% CI: 19.2/1,000, 63.3/1,000 person-years).

\*Information not within publication, authors contacted for clarification.

<https://doi.org/10.1371/journal.pone.0190892.t002>

**Prevalence.** Annual prevalence in the general population was reported as 22.7%, with the annual prevalence in females 29.2% and males 15.5% [83]. Point prevalence in females was reported as 12% to 13% [5]. Point prevalence during a multi-day amateur cycling event for mixed male and female was reported as 35% [24].

### General adolescents population

**Incidence.** Two studies recorded the incidence rate over one season for female adolescent athletes as 9.7%–14.9%, or 0.97–1.09 per 1,000 athletic exposures [16,30], and one study recorded the incidence rate over two seasons with adolescents participating in physical education (sex unknown) as 42.6 cases per 1,000 person-years [18]. One mixed sex study of high school runners reported the incidence rate over one running season as 5.1% [28].

**Prevalence.** Two studies reporting point prevalence (Molgaard [9] and Rathleff [84]) on mixed male and female adolescents were deemed suitably homogenous, and accordingly were pooled in a meta-analysis. Statistical heterogeneity was negligible ( $I^2 = 5.4\%$ ), and the pooled estimate of point prevalence using a fixed effects model was 7.2% (95% CI 6.2%–8.3%). Point prevalence in female only adolescents was reported as 16.3% [16].

Three studies reporting point prevalence (Hall [29], Myer [16], and Steinberg [31]) on female only adolescent athletes were deemed suitably homogenous, and accordingly were also pooled in a meta-analysis. Statistical heterogeneity was high ( $I^2 = 85.7\%$ ), and the pooled estimate of point prevalence using a random effects model was 22.7% (95% CI 17.4%–28.0%).

One study if mixed sex adolescent reported an annual prevalence of 28.9% [27].

### Elite athletes

**Prevalence.** One study with professional male cyclists reported an annual prevalence of 35.7% with symptoms of any duration, and 6.4% with symptoms lasting greater than 30 days [12]. One study of female athletes (mean age 21.6) at the 3rd Iranian Sports Olympiad reported point prevalence of symptoms greater than 3 months of 16.7% [11]; and another with female university ballet dancers reported point prevalence (of unknown duration) as 29.3% [85].



Table 3. Prevalence.

Study	Quality score	Study population	Sample Size	Case definition	Response rate	Results
<b>Military</b>						
Boling (2010) [13]	3/3	United States Naval Academy (USNA) (39.8% female; mean age unknown, range 18–25*).	1,525	Retropatellar pain of any duration with two of the following activities: ascending/descending stairs, hopping/jogging, prolonged sitting with flexed knees, kneeling, and squatting. Plus one of the following: pain on palpation of medial or lateral patellar facets, or pain on palpation of the anterior portion of the medial or lateral femoral condyles.	1,525/1,525 (100%)	Point prevalence of PFPS was 13.5% (95% confidence interval (CI): 11.7%, 15.3%). For females and males it was 15.3% (95% CI: 13.7%, 16.9%) and 12.3% (95% CI: 11.1%, 13.4%), respectively.
<b>General Adult Population</b>						
Dey (2016) [83]	3/3	Community within the UK. Convenience sample of attendance at a University science fair (53% female; mean age 30).	111	Anterior knee or retropatellar pain, often bilateral, of insidious onset present for at least a month and associated with pain or difficulty with prolonged sitting or activities which load the patellofemoral joint, e.g., ascending or descending stairs, running and squatting. Positive diagnosis identified through a self-report questionnaire (SNAPPS- Survey instrument for Natural history, Aetiology and Prevalence of Patellofemoral pain Studies)	110/111 (99%)	Annual prevalence 25/110 (22.7%). Females 67%; males 33%.
Roush (2012) [5]	3/3	18–35 year old females, general population*, USA (mean age 24.7)	769	Anterior Knee Pain Scale score < 83	724/769 (94.1%)	Point prevalence was 12–13%*.
Weiss (1985) [24]	3/3	Amateur multi-day cyclist in USA (69% male; mean age 41.4).	132	Self-reported complaint of patella pain during a cycling event. Tenderness of posterior aspect of patella during flexion and extension.	113/132 (86%)	Point prevalence was 35%.
<b>General Adolescents Population</b>						
Fairbank (1984) [27]	1/3	13–17 year-old students, randomly selected from a comprehensive school in the United Kingdom (49% female, mean age 14.7)	446	11 point questionnaire, including: Do you like playing sport? Have you had painful knees in the last year? Do your knees hurt climbing stairs? Do your knees hurt coming downstairs? Where do you feel the pain in your knees? Does your knee hurt after sitting for a long time? Does your knee hurt only after a lot of exercise?	446/1850 (24.1%)	Annual prevalence 129/446 (28.9%).
Hall (2015) [29]	2/3	Female adolescent athletes in middle and high school, USA (mean age 14.0).	546*	Assessment included the Anterior Knee Pain Scale (AKPS), International Knee Documentation Committee (IKDC) form, standardized history and physician-administered physical examination.	546/546*	Point prevalence 151/546* (28%).
Molgaard (2011) [9]	3/3	16–18 year-old students at one local high school in Denmark (mixed sex; mean age 16.9)	299	Anterior knee pain during physical activity for at least 1 month and pain in at least two of the following four tests: isometric contraction of quads, concentric extension against resistance, palpation of joint line, and compression of the patella.	227/299 (76%)	Point prevalence 13/227 (5.7%). Females 69%; males 31%.
Myer (2010) [16]	2/3	Female adolescent athletes in middle and high school, USA (mean age 13.4 years).	240	Anterior Knee Pain Scale score < 100; knee pain with or shortly following activity and also if anterior knee tenderness was recent.	240/240 (100%)	Point prevalence was 39/240 (16.3%).
Rathleff (2014) [84]	3/3	Population-based cohort of students from secondary schools, Denmark, aged 15–19 years (64.9% female; mean age 17.2).	2,200	Insidious onset of anterior knee or retropatellar pain for at least the past 6 weeks; pain provoked by at least 2 of the following activities: prolonged sitting or kneeling, squatting, running, hopping, or stair walking and tenderness on palpation of the patella.	2,220/2846* (77.3%)	Point prevalence 153/2,062 (7.4%)*.
Steinberg (2012) [31]	1/3	Non-professional female dancers, aged 8–20, Israel (mean age 13.7 years*).	1,359	Pain reproduced during clinical examination; knee swelling was evident, or a positive grinding sign and/or a positive Patellar Inhibition Test (PIT) was obtained when the knee and especially the patella were palpated, contracted and stretched.	1,359/1,359 (100%)	Point prevalence 321/1,359 (23.6%).

(Continued)

Table 3. (Continued)

Study	Quality score	Study population	Sample Size	Case definition	Response rate	Results
<b>Elite Athletes</b>						
Clarsen (2010) [12]	2/3	Professional cycling; 7 training camps (100% male*; mean age 26)	109	Cyclist reported complaint of anterior knee pain in the last 12 months, of any duration. Cyclist reported complaint of anterior knee pain in the last 12 months, >30 days	109/109 (100%)	Annual prevalence 39/109 (35.8%). Annual prevalence 7/109 (6.4%).
Nejati (2010) [11]	1/3	Female athletes participating in 3 <sup>rd</sup> Iranian Sports Olympiad (mean age 21.6, range 15–35).	418	Non traumatic anterior knee pain of at least 3 months duration that was felt retropatellar or peripatellar and was aggravated by descending or ascending stairs, squatting or prolonged sitting.	418/unknown	Point prevalence was 70/418 (16.7%).
Winslow (1995) [85]	1/3	University female ballet dancers, USA (mean age unknown)	41	Pain in front of or under the knee cap with 3 out of 5: associated with kneeling; squatting; during stair climbing; sensations of cracking/grinding or with incidents of joint locking or "catching."	41/unknown	Point prevalence was 12/41 (29.3%).

\*Information not within publication, authors contacted for clarification.

<https://doi.org/10.1371/journal.pone.0190892.t003>

## Discussion

### Summary of main findings

The results of this systematic review confirm that PFP is a common pathology among adolescents, the general population, and those with high levels of activity, such as elite athletes and military populations. Point prevalence within military populations is reported as 13.5% [13]; female general populations 12% to 13% [5]; multi-day amateur cyclists 35% [24]; and female elite sports 16.7% to 29.3% [11,85]. It was calculated through meta-analysis to be 7.2% in mixed sex adolescents, and 22.7% in female amateur athletes. Annual prevalence in the general population is reported as 22.7% [83]; in professional cyclists it is reported as 35.7% [13]; and in general adolescent population it is reported as 28.9% [27]. No studies that were included within our review reported life-time prevalence.

To our knowledge, this is the first review to systematically evaluate and synthesise incidence and prevalence data for PFP. Comparison between studies was fulfilled in relation to age, sex, and activity levels (general population, military and elite athletes).

### Clinical implications

Patellofemoral pain is often cited as an overuse injury [86], with short periods of overuse or an increase in physical activity thought to be a particular risk factor [87]. Within the military population there was low agreement on incidence rate, with predominantly male recruits reported in five studies at 9.7–571.4 cases per 1,000 person-years [17,32,79–81]. Of note is the study with the highest reported incidence (571.4/1,000 person-years) originated from a country with military conscription [17], and may have a population comprising of participants not accustomed to intense periods of physical activity. Studies with lower reported incidences (9.7–349.1/1,000 person-years) were from countries without conscription, where high levels of physical fitness are a requirement of recruitment [13,32,79–81], and so may contain participants more accustomed to intense periods of physical activity. Within the general population the 10-week incidence for novice runners was comparable to the incidence in conscripted military recruits, at 1080.5 cases per 1,000 person-years [82]. These data seem to be in agreement with the model that attributes short periods of unaccustomed high levels of physical activity as

Table 4. Quality appraisal.

	The study sample represents the population of interest on key characteristics	Was there an adequate response rate?	Was the case definition specified and is it reproducible?
Boling (2010) [13]	✓	✓	✓
Clarsen (2010) [12]	✓	✓	✓
Coppack (2011) [79]	✓	✓	✓
Devan (2004) [26]	X	✓	✓
Dey (2016) [83]	✓	✓	✓
Fairbank (1984) [27]	✓	X	X
Finnoff (2011) [28]	✓	X	✓
Hall (2015) [29]	X	✓	✓
Herbst (2015) [30]	X	✓	X
Kaufman (1999) [80]	X	✓	✓
Milgrom (1991) [17]	X	✓	X
Molgaard (2011) [9]	✓	✓	✓
Myer (2010) [16]	X	✓	✓
Nejati (2010) [11]	X	Unknown	✓
Rathleff (2014) [84]	✓	✓	✓
Roush (2012) [5]	✓	✓	✓
Steinberg (2012) [31]	X	✓	X
Thijs (2011) [82]	X	✓	✓
Thijs (2007) [32]	✓	✓	✓
Weiss (1985) [24]	✓	✓	✓
Wills (2004) [81]	✓	✓	✓
Winslow (1995) [85]	X	Unknown	✓
Witvrouw (2000) [18]	Unknown	X	✓

✓, yes; X, no

<https://doi.org/10.1371/journal.pone.0190892.t004>

a risk factor for development of PFP. Contemporary thinking in relation to training loads and injury risk challenges the idea that PFP is simply an overuse injury, with evidence suggesting that under-training may be a risk factor for an increase in injury risk in athletes [88]. Exposure to appropriate training loads and periodisation, without ‘spikes’ in training, is thought to be one method of risk management [88].

There was some consistency in the data relating to ratios of females to males, seemingly confirming the commonly cited claim that females are twice as likely to develop PFP than males [14]. One study demonstrated that females were approximately twice as likely to develop PFP as males during military training, however the same study also demonstrated no statistical difference in point prevalence between males (12.3%) and females (15.3%) ( $p = 0.09$ ) prior to the start of the training programme; suggesting that the transition to elite military fitness from the general population is an important factor in PFP [13]. Another study reported point prevalence within the general population as 29.2% in females and 15.5% males [83]. Prevalence comparison between sexes for adolescents also demonstrates this phenomenon, with one

study showing that females made up 69% of participants with PFP, compared with 31% in males [9]. This is confirmed by our pooled estimates of point prevalence, with mixed sex being calculated at 16.3% and female only at 22.7%.

These data may be used to identify possible populations who are at risk, which may help in relation to clinical decision-making, and the allocation of healthcare and research funding, such as adolescents and people attempting to increase physical activity levels. These populations may be at increased risk of developing of PFP, with subsequent development of pain and physical disability, and possible withdrawal from physical activity. As a consequence having reduced physical activity levels with loss of associated health benefits [89–91].

## Research implications

There appears to be a large discrepancy with research funding and priorities for PFP compared with other knee conditions. For example, there have been over 14,000 papers indexed in MEDLINE for knee osteoarthritis in the last 20 years, with only 1,500 papers indexed on PFP. Yet despite these large differences, incidences rates for PFP far exceed those reported for knee osteoarthritis. This review found reported incidences rates across all populations of 9.7–1080.5 cases per 1,000 person-years; based on primary-care data in Spain the incidence rates for knee osteoarthritis is reported as 8.3 cases per 1,000 person-years for females and 4.6 cases per 1,000 person-years for males, far lower than that of PFP [92]. Furthermore, disability, function and pain scores are comparable; disability and function as measured with the Knee injury and Osteoarthritis Outcome Scores (KOOS) [93], are similar with both conditions [84,94,95]; likewise pain on activity, as measured on a 100mm visual analogue scale, is equivalent [96,97]. Additionally, PFP often affects younger populations, with a significant degree of persistence, potentially making it a much more significant problem, with work absenteeism, and long term health implications through loss of physical activity [89–91].

One of the barriers research and healthcare funding faces for PFP is that historically it has been labelled a “benign, self-limiting condition” [98]. An influential 1985 cohort study by Sandow and Goodfellow [98], that followed 54 adolescents for two to eight years with a new diagnosis of PFP, concluded that a policy of non-intervention was justified in the management of this condition, and that the condition improved over time with few reporting disability. This interpretation contrasts with the APA2011 cohort from Denmark [99]. They demonstrated that at two year follow-up, adolescents with PFP are more likely to still be reporting pain than people with other knee conditions [99]. Indeed, a recent re-analysis of Sandow and Goodfellow’s data does not seem to support their own conclusions, with Luhann et al. [100] highlighting that of the original 54 adolescents, 94% still had pain at final follow-up, with 54% reporting same or worse severity of symptoms. This pattern of poor long term prognosis continues in the adult populations, with a large proportion (> 50%) of people still reporting pain and dysfunction five to eight years after a six weeks evidenced based treatment programme [101]; yet the impression that PFP is a benign and self-limiting condition, with non-intervention advised, has continued to guide funders and stakeholders decision making for decades [102]. In the context of the high incidence and prevalence numbers, poor long term prognosis and high disability levels, PFP should be an urgent research priority.

There is a pressing need for new studies into this condition. For example, advocates of qualitative research methods suggest that qualitative inquiry can disclose the lived experience of people with pain; and therefore be used to understand patient motivation, social engagement and provide a wealth of information about the sociocultural context to pain [103,104]; to date no qualitative body of work has been published on PFP. Qualitative inquiry can provide an insight that may lead to development of ideas and hypothesis generation within the context of the contemporary

biopsychosocial model of pain. This could then be used to develop new conservative management approaches that could then be tested with efficacy and effectiveness trials.

### Strengths and limitations of included trials

A systematic and rigorous approach was taken to identify relevant studies, which included electronic database searching, hand searching, citation searching; with endeavour to find unpublished studies.

The main sources of heterogeneity within the included studies were likely to be from difference in populations and ages. Other potential sources of heterogeneity are different study design methodologies, for example the nature of measures such as point or period, and differences in case definitions. There was no consistency within the included studies on the case definition used, with no two the same. Historically PFP was considered a separate pathology to intra-articular pathologies such as: bursitis, plica syndromes and chondromalacia patellae [105]; however several studies recently have demonstrated that structural abnormalities of the patellofemoral joint on Magnetic Resonance Imaging (MRI) are not associated with PFP [106,107], and a recent consensus statement from the 4th International Patellofemoral Pain Research Retreat defined PFP subjectively only, with no essential objective findings [4]. However, only seven of the included 23 studies in this review had a contemporary case definition that omitted objective findings [11,16,27,81,83–85].

### Limitations of this review

The study presented with two key limitations. For pragmatic reasons only one reviewer screened titles and abstracts. An extensive literature search was carried out, with two reviewers independently screening full-texts for inclusion, and two reviewers independently extracting the data. An attempt was made to retrieve unpublished trials; however it may be that not all trials were retrieved, particularly considering we did not search for papers published in languages other than English. It is likely that the inclusion of such data could influence the estimates of incidence and prevalence for PFP.

### Conclusion

PFP is a common condition, with approximately one in 10 military recruits and one in 14 adolescents suffering at any one time; and one in five of the general population experiencing pain within the last year. Due to a paucity of evidence uncertainty remains with regards to these estimates of incidence and prevalence, and further published or unpublished work is likely to revise our estimates. There is some consistency with data showing females are twice as likely to experience PFP as males. In the context of high incidence and prevalence numbers, poor long term prognosis and high disability levels, PFP should be an urgent research priority. GPs need to be aware of high risk groups, such as adolescents and adults increasing physical activity levels, and the persistent nature of the problem, and ensure timely referrals to physiotherapy to maintain physical activity levels.

### Supporting information

**S1 File. PRISMA checklist.**  
(DOCX)

**S1 Fig. PRISMA flowchart.**  
(TIFF)

## Author Contributions

**Conceptualization:** Benjamin E. Smith.

**Formal analysis:** Benjamin E. Smith.

**Funding acquisition:** Benjamin E. Smith.

**Investigation:** Benjamin E. Smith, James Selfe, Damian Thacker.

**Methodology:** Benjamin E. Smith, James Selfe, Damian Thacker, Paul Hendrick, Marcus Bateman, Fiona Moffatt, Michael Skovdal Rathleff, Toby O. Smith, Pip Logan.

**Project administration:** Benjamin E. Smith.

**Validation:** Damian Thacker.

**Writing – original draft:** Benjamin E. Smith.

**Writing – review & editing:** Benjamin E. Smith, James Selfe, Damian Thacker, Paul Hendrick, Marcus Bateman, Fiona Moffatt, Michael Skovdal Rathleff, Toby O. Smith, Pip Logan.

## References

1. Arthritis Research. Musculoskeletal Matters. 2009.
2. Health and Safety Executive. Health and Safety statistics 2009/10. 2010.
3. Watkins-Castillo S, Andersson G. United States Bone and Joint Initiative: The Burden of Musculoskeletal Diseases in the United States (BMUS). *Burd Musculoskelet Dis Int He United States* 2014.
4. Crossley KM, Stefanik JJ, Selfe J, Collins NJ, Davis IS, Powers CM, et al. 2016 Patellofemoral pain consensus statement from the 4th International Patellofemoral Pain Research Retreat, Manchester. Part 1: Terminology, definitions, clinical examination, natural history, patellofemoral osteoarthritis and patient-reported outcome. *Br J Sports Med* 2016; 50:839–43. <https://doi.org/10.1136/bjsports-2016-096384> PMID: 27343241
5. Roush JJR, Bay RC, Curtis Bay R. Prevalence of anterior knee pain in 18–35 year-old females. *Int J Sports Phys Ther* 2012; 7:396–401. <https://doi.org/10.1016/j.jsams.2011.05.004> PMID: 22893859
6. Crossley K, Bennell K, Green S, Cowan S, McConnell J. Physical therapy for patellofemoral pain—A randomized, double-blinded, placebo-controlled trial. *Am J Sports Med* 2002; 30:857–65. <https://doi.org/10.1177/03635465020300061701> PMID: 12435653
7. Callaghan MJ, Selfe J. Has the incidence or prevalence of patellofemoral pain in the general population in the United Kingdom been properly evaluated? *Phys Ther Sport* 2007. <https://doi.org/10.1016/j.ptsp.2006.07.001>
8. Heino Brechter J, Powers CM. Patellofemoral stress during walking in persons with and without patellofemoral pain. *Med Sci Sports Exerc* 2002. <https://doi.org/10.1249/01.MSS.0000035990.28354.c6> PMID: 12370559
9. Molgaard C, Rathleff MS, Simonsen O. Patellofemoral pain syndrome and its association with hip, ankle, and foot function in 16- to 18-year-old high school students: a single-blind case-control study. *J Am Podiatr Med Assoc* 2011; 101:215–22. 101/3/215 [pii]. PMID: 21622633
10. Thijs Y, De Clercq D, Roosen P, Witvrouw E. Gait-related intrinsic risk factors for patellofemoral pain in novice recreational runners. *Br J Sports Med* 2008; 42:466–71. <https://doi.org/10.1136/bjism.2008.046649> PMID: 18397970
11. Nejati P, Forogh B, Moeineddin R, Baradaran HR, Nejati M. Patellofemoral pain syndrome in Iranian female athletes. *Acta Med Iran* 2011; 49:169–72. <https://doi.org/10.1007/s00167-013-2759-6> PMID: 21681705
12. Clarsen B, Krosshaug T, Bahr R. Overuse injuries in professional road cyclists. *Am J Sports Med* 2010; 38:2494–501. <https://doi.org/10.1177/0363546510376816> PMID: 20847225
13. Boling M, Padua D, Marshall S, Guskiewicz K, Pyne S, Beutler A. Gender differences in the incidence and prevalence of patellofemoral pain syndrome. *Scand J Med Sci Sport* 2010; 20:725–30. <https://doi.org/10.1111/j.1600-0838.2009.00996.x> PMID: 19765240
14. Rathleff MS, Vicenzino B, Middelkoop M, Graven-Nielsen T, van Linschoten R, Holmich P, et al. Patellofemoral Pain in Adolescence and Adulthood: Same Same, but Different? *Sport Med* 2015; 45:1489–95. <https://doi.org/10.1007/s40279-015-0364-1> PMID: 26178330

15. Nunes GS, Stapait EL, Kirsten MH, de Noronha M, Santos GM. Clinical test for diagnosis of patellofemoral pain syndrome: Systematic review with meta-analysis. *Phys Ther Sport* 2013. <https://doi.org/10.1016/j.ptsp.2012.11.003> PMID: 23232069
16. Myer GD, Ford KR, Foss KDB, Goodman A, Ceasar A, Rauh MJ, et al. The incidence and potential pathomechanics of patellofemoral pain in female athletes. *Clin Biomech* 2010; 25:700–7.
17. Milgrom C, Kerem E, Finestone A, Eldad A, Shlamkovitch N. Patellofemoral pain caused by overactivity. A prospective study of risk factors in infantry recruits. *J Bone Jt Surg—Ser A* 1991; 73:1041–3.
18. Witvrouw E, Lysens R, Bellemans J, Cambier D, Vanderstraeten G. Intrinsic risk factors for the development of anterior knee pain in an athletic population a two-year prospective study. *Am J Sports Med* 2000; 28:480–9. <https://doi.org/10.1177/03635465000280040701> PMID: 10921638
19. Rathleff MS, Rasmussen S, Olesen JL. Unsatisfactory long-term prognosis of conservative treatment of patellofemoral pain syndrome. *Ugeskr Laeger* 2012; 174:1008–13. PMID: 22487407
20. Cook C, Mabry L, Reiman MP, Hegedus EJ. Best tests/clinical findings for screening and diagnosis of patellofemoral pain syndrome: a systematic review. *Physiotherapy* 2012; 98:93–100. <https://doi.org/10.1016/j.physio.2011.09.001> PMID: 22507358
21. Stroup DF, Berlin JA, Morton SC, Olkin I, Williamson GD, Rennie D, et al. Meta-analysis of observational studies in epidemiology: a proposal for reporting. Meta-analysis Of Observational Studies in Epidemiology (MOOSE) group. *JAMA* 2000; 283:2008–12. <https://doi.org/10.1001/jama.283.15.2008> PMID: 10789670
22. Moher D, Liberati A, Tetzlaff J, Altman DG. Preferred reporting items for systematic reviews and meta-analyses: The PRISMA statement. *PLoS Med* 2009; 6.
23. Boling MC, Nguyen A, Yau R, Cameron KL, Beutler A, Padua DA, et al. Movement characteristics associated with the development of chronic knee pain. *Osteoarthritis Cartilage* 2015; 23:A60–1.
24. Weiss BD. Nontraumatic injuries in amateur long distance bicyclists. *Am J Sport Med* 1985; 13:187–92.
25. Wilson KC, Evans-Smith E, Oelman BJ. A study of patellofemoral plain in a junior infantry training unit. *J R Army Med Corps* 1983; 129:82–7. PMID: 6620244
26. Devan MR, Pescatello LS, Faghri P, Anderson J. A prospective study of overuse knee injuries among female athletes with muscle imbalances and structural abnormalities. *J Athl Train* 2004; 39:263–7. PMID: 15496997
27. Fairbank JC, Pynsent PB, van Poortvliet J a, Phillips H. Mechanical factors in the incidence of knee pain in adolescents and young adults. *J Bone Joint Surg Br* 1984; 66:685–93. PMID: 6501361
28. Finnoff JT, Hall MM, Kyle K, Krause DA, Lai J, Smith J. Hip strength and knee pain in high school runners: a prospective study. *PM R* 2011; 3:792–801. <https://doi.org/10.1016/j.pmrj.2011.04.007> PMID: 21821478
29. Hall R, Barber Foss K, Hewett TE, Myer GD. Sport Specialization's Association With an Increased Risk of Developing Anterior Knee Pain in Adolescent Female Athletes. *J Sport Rehabil* 2015; 24:31–5. <https://doi.org/10.1123/jsr.2013-0101> PMID: 24622506
30. Herbst KA, Barber Foss KD, Fader L, Hewett TE, Witvrouw E, Stanfield D, et al. Hip Strength Is Greater in Athletes Who Subsequently Develop Patellofemoral Pain. *Am J Sports Med* 2015; 43:2747–52. <https://doi.org/10.1177/0363546515599628> PMID: 26330570
31. Steinberg N, Siev-Ner I, Peleg S, Dar G, Masharawi Y, Zeev A, et al. Joint range of motion and patellofemoral pain in dancers. *Int J Sports Med* 2012; 33:561–6. <https://doi.org/10.1055/s-0031-1301330> PMID: 22562733
32. Thijs Y, Van Tiggelen D, Roosen P, De Clercq D, Witvrouw E. A prospective study on gait-related intrinsic risk factors for patellofemoral pain. *Clin J Sport Med* 2007; 17:437–45. <https://doi.org/10.1097/JSM.0b013e31815ac44f> PMID: 17993785
33. Littlewood C, May S, Walters S. Epidemiology of rotator cuff tendinopathy: a systematic review. *Shoulder Elb* 2013:n/a-n/a. <https://doi.org/10.1111/sae.12028>
34. Hayden JA, Cote P, Bombardier C. Evaluation of the quality of prognosis studies in systematic reviews. *Ann Intern Med* 2006; 144:427–37. PMID: 16549855
35. Luime JJ, Koes BW, Hendriksen IJM, Burdorf A, Verhagen AP, Miedema HS, et al. Prevalence and incidence of shoulder pain in the general population; a systematic review. *Scand J Rheumatol* 2004; 33:73–81. PMID: 15163107
36. Rothman KJ, Boice Jr JD. Epidemiologic analysis with a programmable calculator. Kenneth Rothman; 1982.
37. Higgins J, Thompson S, Deeks J, Altman D. Measuring inconsistency in meta-analyses. *BMJ* 2003; 327:557–60. <https://doi.org/10.1136/bmj.327.7414.557> PMID: 12958120

38. Mathews N. VMD User 's Guide. *Methods* 2009; 51:1581. <https://doi.org/10.2307/2234838>
39. Wood L, Muller S, Peat G. The epidemiology of patellofemoral disorders in adulthood: a review of routine general practice morbidity recording. *Prim Health Care Res Dev* 2011; 12:157–64. <https://doi.org/10.1017/S1463423610000460> PMID: 21457600
40. Waldén M, Hägglund M, Ekstrand J. Injuries in Swedish elite football—A prospective study on injury definitions, risk for injury and injury pattern during 2001. *Scand J Med Sci Sport* 2005; 15:118–25. <https://doi.org/10.1111/j.1600-0838.2004.00393.x> PMID: 15773867
41. De Bernardo N, Barrios C, Vera P, Laíz C, Hadala M. Incidence and risk for traumatic and overuse injuries in top-level road cyclists. *J Sport Sci* 2012; 30 (10):1047–53. <https://doi.org/10.1080/02640414.2012.687112> PMID: 22587674
42. Fallon KE. Musculoskeletal injuries in the ultramarathon: the 1990 Westfield Sydney to Melbourne run. *Br J Sports Med* 1996; 30:319–23. PMID: 9015594
43. Nielsen R, Thorlund Parner E, Aagaard Nohr E, SØRensen H, Lind M, Rasmussen S, et al. Excessive progression in weekly running distance and risk of running-related injuries: an association which varies according to type of injury. *J Orthop Sports Phys Ther* 2014; 44:739–47. <https://doi.org/10.2519/jospt.2014.5164> PMID: 25155475
44. Jones BH, Cowan DN, Tomlinson JP, Robinson JR, Polly DW, Frykman PN. Epidemiology of injuries associated with physical training among young men in the army. *Med Sci Sports Exerc* 1993; 25:197–203. PMID: 8450721
45. Louw Q. Prevalence of anterior knee pain among young South African basketball players. *South African J Physiother* 2003; 59:20–3.
46. Cowan DN, Jones BH, Frykman PN, Polly DWJ, Harman EA, Rosenstein RM, et al. Lower limb morphology and risk of overuse injury among male infantry trainees. *Med Sci Sports Exerc* 1996; 28:945–52. PMID: 8871902
47. Jose Sobrino F, de la Cuadra C, Guillen P. Overuse Injuries in Professional Ballet Injury-Based Differences Among Ballet Disciplines. *Orthop J Sport Med* 2015; 3. <https://doi.org/10.1177/2325967115590114> PMID: 26665100
48. Galanty HL, Matthews C, Hergenroeder AC. Anterior knee pain in adolescents. *Clin J Sport Med* 1994; 4:176–81.
49. Cumps E, Verhagen EA, Duerinck S, Deville A, Duchene L, Meeusen R. Effect of a preventive intervention programme on the prevalence of anterior knee pain in volleyball players. *Eur J Sport Sci* 2008; 8:183–92.
50. Foss KDB, Myer GD, Hewett TE. Epidemiology of basketball, soccer, and volleyball injuries in middle-school female athletes. *Phys Sportsmed* 2014; 42:146–53. <https://doi.org/10.3810/psm.2014.05.2066> PMID: 24875981
51. Kusnezov N, Watts N, Belmont PJ, Orr JD, Waterman B. Incidence and risk factors for chronic anterior knee pain. *J Knee Surg* 2016; 29:248–53. <https://doi.org/10.1055/s-0035-1554921> PMID: 26166427
52. Tenforde AS, Sayres LC, McCurdy ML, Collado H, Sainani KL, Fredericson M. Overuse injuries in high school runners: lifetime prevalence and prevention strategies. *PM R* 2011; 3:125–31; quiz 131. <https://doi.org/10.1016/j.pmrj.2010.09.009> PMID: 21333951
53. Yates C, Grana WA. Patellofemoral pain—A prospective study. *Orthopedics* 1986; 9:663–7. PMID: 3714580
54. Foss KDB, Hornsby M, Edwards NM, Myer GD, Hewett TE. Is body composition associated with an increased risk of developing anterior knee pain in adolescent female athletes? *Phys Sportsmed* 2012; 40:13–9.
55. Cumps E, Verhagen E, Meeusen R. Prospective epidemiological study of basketball injuries during one competitive season: ankle sprains and overuse knee injuries. *J Sport Sci Med* 2007; 6:204–11.
56. Echegoyen S, Acuña E, Rodríguez C. Injuries in students of three different dance techniques. *Med Probl Perform Art* 2010; 25:72–4. PMID: 20795335
57. Clarsen B, Bahr R, Heymans MW, Engedahl M, Midtsundstad G, Rosenlund L, et al. The prevalence and impact of overuse injuries in five Norwegian sports: application of a new surveillance method. *Scand J Med Sci Sports* 2015; 25:323–30. <https://doi.org/10.1111/sms.12223> PMID: 24684525
58. Wilber CA, Holland GJ, Madison RE, Loy SF. An epidemiological analysis of overuse injuries among recreational cyclists. *Int J Sport Med* 1995; 16:201–6. <https://doi.org/10.1055/s-2007-972992> PMID: 7649713
59. Rauh MJ, Koepsell TD, Rivara FP, Margherita AJ, Rice SG. Epidemiology of musculoskeletal injuries among high school cross-country runners. *Am J Epidemiol* 2006; 163:151–9. <https://doi.org/10.1093/aje/kwj022> PMID: 16306308



60. Althunyan AK, Darwish MA, Abdel Wahab MM. Knee problems and its associated factors among active cyclists in Eastern Province, Saudi Arabia. *J Family Community Med* 2017; 24:23–9. <https://doi.org/10.4103/2230-8229.197178> PMID: 28163572
61. Taunton JE, Ryan MB, Clement DB, McKenzie DC, Lloyd-Smith DR, Zumbo BD. A retrospective case-control analysis of 2002 running injuries. *Br J Sports Med* 2002; 36:95–101. <https://doi.org/10.1136/bjism.36.2.95> PMID: 11916889
62. Barrios C, Bernardo ND, Vera P, Laiz C, Hadala M. Changes in sports injuries incidence over time in world-class road cyclists. *Int J Sports Med* 2015; 36:241–8. <https://doi.org/10.1055/s-0034-1389983> PMID: 25376727
63. Sobrino FJ, Guillen P. Overuse Injuries in Professional Ballet Influence of Age and Years of Professional Practice. *Orthop J Sport Med* 2017; 5. <https://doi.org/10.1177/2325967117712704> PMID: 28695138
64. Dingenen B, Malfait B, Nijs S, Peers KHE, Vereecken S, Verschueren SMP, et al. Can two-dimensional video analysis during single-leg drop vertical jumps help identify non-contact knee injury risk? A one-year prospective study. *Clin Biomech* 2015; 30:781–7. <https://doi.org/10.1016/j.clinbiomech.2015.06.013> PMID: 26144662
65. Milgrom C, Finestone A, Shlamkovitch N, Giladi M, Radin E. Anterior knee pain caused by overactivity: A long term prospective followup. *Clin Orthop Relat Res* 1996;256–60.
66. Noehren B, Hamill J, Davis I. Prospective evidence for a hip etiology in patellofemoral pain. *Med Sci Sports Exerc* 2013; 45:1120–4. <https://doi.org/10.1249/MSS.0b013e31828249d2> PMID: 23274607
67. Lakstein D, Fridman T, Ziv YB, Kosashvili Y. Prevalence of anterior knee pain and pes planus in Israel defense force recruits. *Mil Med* 2010; 175:855–7. PMID: 21121494
68. Jordaan G, Schweltnus MP. The incidence of overuse injuries in military recruits during basic military training. *Mil Med* 1994; 159:421–6. PMID: 7984296
69. Knobloch K, Yoon U, Vogt PM. Acute and overuse injuries correlated to hours of training in master running athletes. *Foot Ankle Int* 2008; 29:671–6. <https://doi.org/10.3113/FAI.2008.0671> PMID: 18785416
70. Dannenberg AL, Needle S, Mullady D, Kolodner KB. Predictors of injury among 1638 riders in a recreational long-distance bicycle tour: Cycle Across Maryland. *Am J Sport Med* 1996; 24:747–53.
71. Hopper D, Elliott B. Lower limb and back injury patterns of elite netball players. *Sports Med* 1993; 16:148–62. PMID: 8378669
72. Hetsroni I, Finestone A, Milgrom C, D BS, Nyska M, Radeva-Petrova D, et al. A prospective biomechanical study of the association between foot pronation and the incidence of anterior knee pain among military recruits. *J Bone Jt Surgery, Br Vol* 2006; 88B:905–8.
73. Bishop GW, Fallon KE. Musculoskeletal Injuries in a Six-Day Track Race: Ultramarathoner| M's Ankle. *Clin J Sport Med* 1999; 9:216–20. PMID: 10593216
74. Dorotka R, Jimenez-Boj E, Kypta A, Kollar B. The patellofemoral pain syndrome in recruits undergoing military training: a prospective 2-year follow-up study. *Mil Med* 2003; 168:337. PMID: 12733682
75. Rathleff CR, Baird WN, Olesen JL, Roos EM, Rasmussen S, Rathleff MS. Hip and knee strength is not affected in 12–16 year old adolescents with patellofemoral pain—a cross-sectional population-based study. *PLoS One* 2013; 8:e79153. <https://doi.org/10.1371/journal.pone.0079153> PMID: 24236101
76. Hart LE, Mohtadi N. Risk factors for patellofemoral pain syndrome in athletic young adults. *Clin J Sport Med* 2001; 11:127.
77. Boling MC, Padua DA, Marshall SW, Guskiewicz K, Pyne S, Beutler A, et al. A prospective investigation of biomechanical risk factors for patellofemoral pain syndrome: the Joint Undertaking to Monitor and Prevent ACL Injury (JUMP-ACL) cohort. *Am J Sports Med* 2009; 37:2108–16. <https://doi.org/10.1177/0363546509337934> PMID: 19797162
78. Foss KDB, Myer GD, Chen SS, Hewett TE. Expected prevalence from the differential diagnosis of anterior knee pain in adolescent female athletes during preparticipation screening. *J Athl Train* 2012; 47:519–24. <https://doi.org/10.4085/1062-6050-47.5.01> PMID: 23068589
79. Coppack RJ, Etherington J, Wills AK. The Effects of Exercise for the Prevention of Overuse Anterior Knee Pain: A Randomized Controlled Trial. *Am J Sports Med* 2011; 39:940–8. <https://doi.org/10.1177/0363546510393269> PMID: 21212307
80. Kaufman KR, Brodine SK, Shaffer RA, Johnson CW, Cullison TR. The effect of foot structure and range of motion on musculoskeletal overuse injuries. *Am J Sports Med* 1999; 27:585–93. <https://doi.org/10.1177/03635465990270050701> PMID: 10496574
81. Wills AK, Ramasamy A, Ewins DJ, Etherington J. The incidence and occupational outcome of overuse anterior knee pain during army recruit training. *J R Army Med Corps* 2004; 150:264–9. PMID: 15732414

82. Thijs Y, Pattyn E, Van Tiggelen D, Rombaut L, Witvrouw E. Is hip muscle weakness a predisposing factor for patellofemoral pain in female novice runners? A prospective study. *Am J Sports Med* 2011; 39:1877–82. <https://doi.org/10.1177/0363546511407617> PMID: 21632979
83. Dey P, Callaghan M, Cook N, Sephton R, Sutton C, Hough E, et al. A questionnaire to identify patellofemoral pain in the community: an exploration of measurement properties. *BMC Musculoskelet Disord* 2016; 17:237. <https://doi.org/10.1186/s12891-016-1097-5> PMID: 27245443
84. Rathleff MS, Roos EM, Olesen JL, Rasmussen S. Exercise during school hours when added to patient education improves outcome for 2 years in adolescent patellofemoral pain: a cluster randomised trial. *Br J Sports Med* 2015; 49:406–12. <https://doi.org/10.1136/bjsports-2014-093929> PMID: 25388552
85. Winslow J, Yoder E. Patellofemoral pain in female ballet dancers: correlation with iliotibial band tightness and tibial external rotation. *J Orthop Sports Phys Ther* 1995; 22:18–21. <https://doi.org/10.2519/jospt.1995.22.1.18> PMID: 7550298
86. Herrington L, Nester C. Q-angle undervalued? The relationship between Q-angle and medio-lateral position of the patella. *Clin Biomech (Bristol, Avon)* 2004; 19:1070–3. <https://doi.org/10.1016/j.clinbiomech.2004.07.010>
87. Lankhorst NE, Bierma-Zeinstra SMA, van Middelkoop M. Risk Factors for Patellofemoral Pain Syndrome: A Systematic Review. *J Orthop Sport Phys Ther* 2012; 42:81–94. <https://doi.org/10.2519/jospt.2012.3803> PMID: 22031622
88. Gabbett TJ. The training-injury prevention paradox: should athletes be training smarter and harder? *Br J Sports Med* 2016; 50:273–80. <https://doi.org/10.1136/bjsports-2015-095788> PMID: 26758673
89. Madden KM, Lockhart C, Cuff D, Potter TF, Meneilly GS. Short-Term Aerobic Exercise Reduces Arterial Stiffness in Older Adults With Type 2 Diabetes, Hypertension, and Hypercholesterolemia. *Diabetes Care* 2009; 32:1531–5. <https://doi.org/10.2337/dc09-0149> PMID: 19509011
90. Castaneda C, Layne JE, Munoz-Orians L, Gordon PL, Walsmith J, Foldvari M, et al. A randomized controlled trial of resistance exercise training to improve glycemic control in older adults with type 2 diabetes. *Diabetes Care* 2002; 25:2335–41. PMID: 12453982
91. Ettinger WH, Burns R, Messier SP, Applegate W, Rejeski WJ, Morgan T, et al. A randomized trial comparing aerobic exercise and resistance exercise with a health education program in older adults with knee osteoarthritis. The Fitness Arthritis and Seniors Trial (FAST). vol. 277. 1997. <https://doi.org/10.1001/jama.1997.03540250033028>
92. Prieto-Alhambra D, Judge A, Javaid MK, Cooper C, Diez-Perez A, Arden NK. Incidence and risk factors for clinically diagnosed knee, hip and hand osteoarthritis: influences of age, gender and osteoarthritis affecting other joints. *Ann Rheum Dis* 2014; 73:1659–64. <https://doi.org/10.1136/annrheumdis-2013-203355> PMID: 23744977
93. Roos EM, Lohmander LS. The Knee injury and Osteoarthritis Outcome Score (KOOS): from joint injury to osteoarthritis. *Health Qual Life Outcomes* 2003; 1:64. <https://doi.org/10.1186/1477-7525-1-64> PMID: 14613558
94. Roos EM, Toksvig-Larsen S. Knee injury and Osteoarthritis Outcome Score (KOOS)—validation and comparison to the WOMAC in total knee replacement. *Health Qual Life Outcomes* 2003; 1:17. <https://doi.org/10.1186/1477-7525-1-17> PMID: 12801417
95. Roos EM, Roos HP, Lohmander LS. WOMAC Osteoarthritis Index—additional dimensions for use in subjects with post-traumatic osteoarthritis of the knee. Western Ontario and MacMaster Universities. *Osteoarthr Cartil* 1999; 7:216–21. <https://doi.org/10.1053/joca.1998.0153> PMID: 10222220
96. Collins NJ, Crossley KM, Darnell R, Vicenzino B, NJ C, KM C, et al. Predictors of short and long term outcome in patellofemoral pain syndrome: a prospective longitudinal study. *BMC Musculoskelet Disord* 2010; 11:11. <https://doi.org/10.1186/1471-2474-11-11> PMID: 20082723
97. Skou ST, Roos EM, Simonsen O, Laursen MB, Rathleff MS, Arendt-Nielsen L, et al. The effects of total knee replacement and non-surgical treatment on pain sensitization and clinical pain. *Eur J Pain* 2016; 20:1612–21. <https://doi.org/10.1002/ejp.878> PMID: 27029553
98. Sandow MJ, Goodfellow JW. The natural history of anterior knee pain in adolescents. *J Bone Joint Surg Br* 1985; 67:36–8. PMID: 3968140
99. Rathleff MS, Rathleff CR, Olesen JL, Rasmussen S, Roos EM. Is knee pain during adolescence a self-limiting condition? Prognosis of patellofemoral pain and other types of knee pain. *Am J Sports Med* 2016; 44:03635465156221165–71456. <https://doi.org/10.1177/0363546515622456> PMID: 26792702
100. Luhmann SJ, Schoenecker PL, Dobbs MB, Eric Gordon J. Adolescent patellofemoral pain: implicating the medial patellofemoral ligament as the main pain generator. *J Child Orthop* 2008; 2:269–77. <https://doi.org/10.1007/s11832-008-0104-2> PMID: 19308554

101. Lankhorst NE, van Middelkoop M, Crossley KM, Bierma-Zeinstra SMA, Oei EHG, Vicenzino B, et al. Factors that predict a poor outcome 5–8 years after the diagnosis of patellofemoral pain: a multicentre observational analysis. *Br J Sports Med* 2016; 50:881–6. <https://doi.org/10.1136/bjsports-2015-094664> PMID: 26463119
102. Carlson VR, Boden BP, Shen A, Jackson JN, Alter KE, Sheehan FT. Patellar Maltracking Persists in Adolescent Females With Patellofemoral Pain: A Longitudinal Study. *Orthop J Sport Med* 2017; 5. <https://doi.org/10.1177/2325967116686774> PMID: 28210658
103. Walker J, Holloway I, Sofaer B. In the system: the lived experience of chronic back pain from the perspectives of those seeking help from pain clinics. *Pain* 1999; 80:621–8. PMID: 10342423
104. Walker J, Sofaer B, Holloway I. The experience of chronic back pain: accounts of loss in those seeking help from pain clinics. *Eur J Pain* 2006; 10:199. <https://doi.org/10.1016/j.ejpain.2005.03.007> PMID: 16490728
105. Thomee R, Augustsson J, Karlsson J, Thomeé R, Augustsson J, Karlsson J. Patellofemoral pain syndrome: a review of current issues. *Sports Med* 1999; 28:245–62. <https://doi.org/10.2165/00007256-199928040-00003> PMID: 10565551
106. van der Heijden RA, Oei EHG, Bron EE, van Tiel J, van Veldhoven PLJ, Klein S, et al. No Difference on Quantitative Magnetic Resonance Imaging in Patellofemoral Cartilage Composition Between Patients With Patellofemoral Pain and Healthy Controls. *Am J Sports Med* 2016; 44:1172–8. <https://doi.org/10.1177/0363546516632507> PMID: 26951075
107. van der Heijden RA, de Kanter JLM, Bierma-Zeinstra SMA, Verhaar JAN, van Veldhoven PLJ, Krestin GP, et al. Structural Abnormalities on Magnetic Resonance Imaging in Patients With Patellofemoral Pain: A Cross-sectional Case-Control Study. *Am J Sports Med* 2016; 44:2339–46. <https://doi.org/10.1177/0363546516646107> PMID: 27206691