



Aalborg Universitet

AALBORG UNIVERSITY
DENMARK

Long-Term Incidence of Venous Thromboembolism in Cancer

The Scandinavian Thrombosis and Cancer Cohort

Gade, Inger Lise; Brækkan, Sigrid K.; Næss, Inger Anne; Hansen, John-Bjarne; Cannegieter, Suzanne C.; Rosendaal, Frits R.; Overvad, Kim; Hindberg, Kristian; Hammerstrøm, Jens; Gran, Olga V.; Tjønneland, Anne; Severinsen, Marianne T.; Kristensen, Søren R.

Published in:
TH Open

DOI (link to publication from Publisher):
[10.1055/s-0038-1641678](https://doi.org/10.1055/s-0038-1641678)

Creative Commons License
CC BY 4.0

Publication date:
2018

Document Version
Publisher's PDF, also known as Version of record

[Link to publication from Aalborg University](#)

Citation for published version (APA):

Gade, I. L., Brækkan, S. K., Næss, I. A., Hansen, J-B., Cannegieter, S. C., Rosendaal, F. R., Overvad, K., Hindberg, K., Hammerstrøm, J., Gran, O. V., Tjønneland, A., Severinsen, M. T., & Kristensen, S. R. (2018). Long-Term Incidence of Venous Thromboembolism in Cancer: The Scandinavian Thrombosis and Cancer Cohort. *TH Open*, 2(2), e131-e138. <https://doi.org/10.1055/s-0038-1641678>

General rights

Copyright and moral rights for the publications made accessible in the public portal are retained by the authors and/or other copyright owners and it is a condition of accessing publications that users recognise and abide by the legal requirements associated with these rights.

- Users may download and print one copy of any publication from the public portal for the purpose of private study or research.
- You may not further distribute the material or use it for any profit-making activity or commercial gain
- You may freely distribute the URL identifying the publication in the public portal -

Take down policy

If you believe that this document breaches copyright please contact us at vbn@aub.aau.dk providing details, and we will remove access to the work immediately and investigate your claim.

Long-Term Incidence of Venous Thromboembolism in Cancer: The Scandinavian Thrombosis and Cancer Cohort

Inger Lise Gade¹ Sigrid K. Brækkan^{2,3} Inger Anne Næss⁴ John-Bjarne Hansen^{2,3}
Suzanne C. Cannegieter⁵ Frits R. Rosendaal⁵ Kim Overvad^{6,7} Kristian Hindberg²
Jens Hammerstrøm⁸ Olga V. Gran² Anne Tjønneland⁹ Marianne T. Severinsen^{1,10}
Søren R. Kristensen^{1,11}

¹ Department of Clinical Medicine, Aalborg University, Aalborg, Denmark

² Department of Clinical Medicine, K.G. Jebsen Thrombosis Research and Expertise Centre (TREC), University of Tromsø–The Arctic University of Norway, Tromsø, Norway

³ Division of Internal Medicine, University Hospital of North Norway, Tromsø, Norway

⁴ Department of Haematology, Trondheim University Hospital, Trondheim, Norway

⁵ Department of Clinical Epidemiology, Leiden University Medical Center, Leiden, The Netherlands

⁶ Section for Epidemiology, Department of Public Health, Aarhus University, Aarhus, Denmark

⁷ Department of Cardiology, Aalborg University Hospital, Aalborg, Denmark

⁸ Department of Cancer Research and Molecular Medicine, Norwegian University of Science and Technology, Trondheim, Norway

⁹ Department of Diet, Genes and Environment, Danish Cancer Society Research Center, Copenhagen, Denmark

¹⁰ Department of Haematology, Aalborg University Hospital, Aalborg, Denmark

¹¹ Department of Clinical Biochemistry, Aalborg University Hospital, Aalborg, Denmark,

Address for correspondence Inger Lise Gade, MD, Department of Clinical Medicine, Aalborg University, Sdr. Skovvej 15, 9000 Aalborg, Denmark (e-mail: inlg@rn.dk).

TH Open 2018;2:e131–e138.

Abstract

The risk of venous thromboembolism (VTE) in patients who survive the first years after a cancer diagnosis after the acute effects of disease and treatment in comparison to a similar background population has been sparsely investigated. The aim of the study was to investigate if incidence rates (IRs) of VTE differed in patients who were alive at least 2 years after a cancer diagnosis without VTE compared with cancer-free references in a population-based cohort study. The study entry was 2 years after a first cancer diagnosis. For each cancer-exposed subject, five reference subjects were identified within the cohort. The IRs were calculated as number of VTEs per 1,000 person years ($\times 10^{-3}$ p-y) in total and in distinct cancer types and corresponding reference subjects. Incidence rate ratios (IRRs) were calculated by Poisson's regression. During a mean follow-up of 5.3 years, 110 VTEs occurred among the 7,288 cancer-exposed subjects and 321 VTEs occurred among the 36,297 identified reference subjects. The IR of VTE was higher for cancer-exposed subjects compared with reference subjects, IRs 3.7×10^{-3} p-y, 95% CI: 3.1 to 4.5 and 1.9×10^{-3} p-y, 95% CI: 1.7 to 2.2, respectively. IRs of VTE in most solid cancer types declined to almost the same level as in the reference subjects 2 years after cancer diagnosis, but remained higher in hematological cancers, IRR 4.0, 95% CI: 2.0 to 7.8.

Keywords

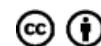
- ▶ cancer
- ▶ epidemiology
- ▶ prospective studies
- ▶ time factors
- ▶ venous thromboembolism

received
November 21, 2017
accepted after revision
February 19, 2018

DOI <https://doi.org/10.1055/s-0038-1641678>.
ISSN 2512-9465.

© 2018 Georg Thieme Verlag KG
Stuttgart · New York

License terms



Introduction

Cancer entails a higher risk of venous thromboembolism (VTE) and the risk varies due to patient-specific, cancer-specific, and treatment-related risk factors, and depends on time since cancer diagnosis.^{1–8} The risk of VTE is highest in the months shortly before and after cancer diagnosis and attenuates considerably by time since cancer diagnosis.^{2,7,9–11} However, the incidence of VTE among cancer patients who survive the first years after a cancer diagnosis in comparison to the background population is sparse.

The risk of VTE in association with a cancer diagnosis is strongly related to cancer type, and consequently the risk of VTE in patients who are alive when the acute effect of the cancer and its treatments on the risk of VTE attenuates may also differ according to cancer type. Several studies on single entities of cancer have reported risk of VTE associated with cancer and typically the occurrence of VTE was described as the cumulative incidence proportions of VTE with reference to the time since cancer diagnosis.^{10–21} This measure is, however, not suitable for the estimation of the VTE risk for cancer patients who pay their last visit in the oncologic outpatient clinic after relapse-free survival some years after the diagnosis. If the VTEs in close proximity to the cancer diagnosis are included, this estimate will be too high. For patients who are alive after the acute effect of cancer and the associated treatments have faded, the early events in the cancer group should not be included when estimating their future risk of VTE.

The Scandinavian Cancer and Thrombosis (STAC) cohort contains person-time data for 144 952 persons among whom 19,757 cancers occurred during a median follow-up of 14.1 years.²² The size of the STAC cohort enables matching to cancer-free subjects within the cohort and thus comparison of VTE incidence rates (IRs) in subjects with different initial cancer types.

The objective of this study was to investigate the incidence of VTE in cancer-exposed subjects who survived the first 2 to 5 years after cancer diagnosis without VTE. These patients contributed to person-time at risk of first lifetime VTE from 2 years after cancer diagnosis and onwards. IRs of VTE were estimated for the cancer-exposed subjects overall and in distinct types of cancer and were compared with the IRs of VTE in cancer-free reference subjects starting at different time points from initial cancer diagnosis.

Methods

Study Population

Prospectively collected data from three large population-based studies were merged in the STAC cohort. The Danish Diet, Cancer and Health (DCH) Study contributed with 57,053 participants; the Norwegian studies, the Tromsø Study (Tromsø 4), and the Nord-Trøndelag Health Study (HUNT2) contributed with 27,158 and 65,237 participants, respectively. In the two Norwegian cohorts, all inhabitants of Tromsø and Nord-Trøndelag between 25 to 99 and 19 to 103 years of age, respectively, were invited to participate,

while in the DCH study all inhabitants of the cities Copenhagen and Aarhus aged 50 to 64 were invited. The rates of participation were between 35% and 77%, highest in Tromsø.^{23–25} Enrolment took place from 1993 through 1997, and subjects with prior cancer or VTE were excluded from the STAC cohort, leaving 144,952 participants to follow up. By informed, written consent at enrolment, every participant permitted linkage to national registries by the civil personal registration (CPR) number, which is a unique id assigned to every citizen at birth or immigration by the respective national civil registration systems. They are continuously updated on vital and emigration status, which means no de facto loss to follow-up in studies taking advantage of the CPR numbers. Recently, the STAC cohort's profile including age-specific IRs of cancer and VTE was published.²² The age-standardized rates of cancer in the three original cohorts did not differ from the respective general populations. In this study, we included all cancer patients, who were alive and free of previous VTE 2 years after a first cancer diagnosis. Patients in the STAC cohort with a cancer diagnosis after last follow-up for validated VTEs ($n = 301$) were excluded, leaving in a total of 7,645 patients with a former cancer diagnosis eligible for this study.

Identification of Cancer-Exposed Subjects and Sampling of Reference Subjects

In both Denmark and Norway, cancer registration is mandatory by law and the respective national cancer registries provide high-quality data on individual cancer diagnosis date and cancer type by ICD-10 codes, which identified cancer patients in this study.^{26–30} All cancer types were included except nonmelanoma skin cancers (ICD-10 C 44.x) and chronic myeloproliferative/myelodysplastic diseases (ICD-10 C 92.1–C 45.9 and D 45.0–47.3) as this group was not registered in the national cancer registries before 2004. If a new cancer was registered by an ICD-10 code different from the index cancer after the study entry, this was considered a second cancer. Cancer stage was registered by national classification systems, the Federation of Gynecology and Obstetrics (FIGO) classification (for gynecological tumors), Duke's classification (for colorectal cancer), or the Tumor, Node, Metastasis (TNM) classification. We have recently developed an algorithm for mapping of cancer stages in the different classification systems to a "localized, regional spread, distant metastasis" terminology according to recommendations from the International Cancer Benchmark Partnership.^{31,32}

For each cancer-exposed subject, we intended to identify five reference subjects in the STAC cohort free of previous cancer and VTE at the index date. Reference subjects were matched on age at study entry, sex, and original study to control for confounding by these factors, the latter due to different points of administrative censoring in the three original cohorts. In case no reference subjects were identified, the cancer-exposed subject was excluded from the study.

Outcome

All potential first-time, symptomatic VTE events (pulmonary embolism and deep vein thrombosis covered) in the STAC

cohort were identified before merging by linkage of CPR numbers to hospital discharge registries and radiology procedure registries in Norway and the Danish National Patient registry and the Danish national Cause of Death Registry in Denmark. Subsequently all VTE events were validated by review of medical records; typical symptoms of VTE, biochemical tests and diagnostic images, and provoking factors were noted. A VTE was confirmed in cases where a diagnostic test following typical clinical symptoms confirmed a VTE as described in detailed in previous publications.^{33–35} Last follow-up for VTE was in 2012 in the Tromsø Study, in 2008 in DCH, and in 2007 in HUNT2.

Statistics

The study entry was set to 730.50 days after first cancer diagnosis and the corresponding index date for reference subjects. Participants contributed with cancer-exposed and corresponding never-cancer-exposed person-time until VTE, end of follow-up for VTE, second cancer diagnosis, emigration or death, and for reference subjects a first cancer diagnosis, whichever came first. We calculated IRs as number of VTEs per 1,000 person-years ($\times 10^{-3}$ p-y) for different time periods after cancer diagnosis: the entire study period (i.e., ≥ 2 years after cancer diagnosis) and 3 years after study entry (i.e., ≥ 5 years after cancer diagnosis) and at corresponding points in reference subjects. Incidence rate differences (IRD) and associated 95% confidence intervals (CI) were calculated to describe absolute differences in VTE occurrence in cancer-exposed subjects and reference subjects. Estimates were calculated for all cancers combined and for the most common single entities of cancer among the cancer-exposed subjects: hematological cancers, colorectal, breast, and prostate cancers. All other solid cancer types were combined in one group with lung, bladder, and uterine cancers being the most common cancer types.

Relative measures of association were calculated as incidence rate ratios (IRR) with associated 95% CIs. Age was included as a continuous variable represented as a restricted

cubic spline variable with four knots in the Poisson regression model to control for aging since study entry/index date. The association between initial cancer stage (at the time of diagnosis) and VTEs in the cancer-exposed subjects was assessed in separate analysis.

To illustrate the absolute risk of VTE, cumulative incidence proportions of VTE since study entry were calculated for reference subjects and for cancer overall. We created variables containing the cumulative incidences of each of the censoring events; death and second cancer were treated as competing risks in the cancer exposed, while death and first cancer were treated as competing risks in reference subjects.

The significance of the difference between provoked VTEs in cancer-exposed subjects compared with reference subjects was tested by using chi-square test.

Results

Mean age for the cancer-exposed subjects at study entry (i.e., 2 years after cancer diagnosis) was 68.9 years, and 49.5% were males. The vast majority of the cancer-exposed subjects had initially (i.e., at the time of diagnosis) localized or regional spread cancer (► **Table 1**). During the study period, a cancer diagnosis occurred in 4,855 (13.4%) of the reference subjects. A second cancer diagnosis occurred in 770 (10.6%) of the cancer-exposed subjects during the study period and three VTEs occurred after this diagnosis. In total 431 VTEs occurred during the study period with a mean follow-up of 5.3 years (i.e., 7.3 years after cancer diagnosis). A total of 110 of the VTEs occurred among the cancer-exposed subjects; 77 of these occurred more than 1 year after study entry (i.e., more than 3 years after cancer diagnosis) and 44 occurred later than 3 years after study entry (i.e., more than 5 years after cancer diagnosis).

In total, 36,297 reference subjects were identified. For 7,238 of the 7,645 identified cancer-exposed subjects, five reference subjects were identified, but despite the size of the STAC cohort, no reference subjects were available for 357 cancer-

Table 1 Baseline characteristics for the cancer-exposed subjects and the reference subjects

	N	Male	Female	Mean age, y (range)	SD mean age	Localized disease % (n)	Regional spread % (n)	Distant metastasis % (n)	Unknown stage % (n)
Reference subjects	36,297	16,506	19,791	65.0 (22.0–97.0)	9.5	–	–	–	–
Breast	1,703	9	1,694	63.5 (35.5–97.1)	8.9	51 (872)	36 (621)	2 (28)	11 (182)
Prostate	1,331	1,331	0	69.0 (44.5–97.4)	6.9	49 (658)	10 (130)	10 (127)	31 (416)
Colorectal	1,122	561	561	67.8 (38.0–93.1)	8.9	39 (442)	50 (559)	5 (57)	6 (64)
Other solid cancer	2,571	1,122	1,449	64.3 (23.9–94.9)	10.7	64 (1,636)	16 (420)	7 (179)	13 (336)
Hematological	561	295	266	65.7 (22.5–96.5)	11.3	na	na	na	na

Abbreviations: na, not available; SD, standard deviation.

exposed subjects which were excluded from the study. The majority of these were older males from the Tromsø Study. For 22 cancer exposed, one reference subject was identified, for 9 cancer exposed two reference subjects, for another 9 cancer exposed three reference subjects, and for 10 cancer exposed four reference subjects were identified.

The IR of VTE that occurred during the total study period (i.e., from more than 2 years after cancer diagnosis) was higher in the cancer-exposed subjects (IR: 3.7×10^{-3} p-y, 95% CI: 3.1–4.5) compared with the reference subjects (IR: 1.9×10^{-3} p-y, 95% CI: 1.7–2.2; ▶ **Table 2**). The cumulative incidence proportion of VTE increased linearly during follow-up for both cancer-exposed and reference subjects, but with a steeper slope in cancer exposed (▶ **Fig. 1**). The IRs of VTEs calculated for the periods ≥ 2 and ≥ 5 years after a cancer diagnosis were all nearly twofold higher compared with reference subjects (▶ **Table 3**). The absolute occurrence of VTE was significantly higher in cancer-exposed compared with reference subjects even when restricting observation time to the period beyond 5 years after cancer diagnosis (IRD: 1.3×10^{-3} p-y, 95% CI: 0.2–2.3).

In the single entities of cancer, we observed varying IRs of VTE in the cancer-exposed subjects, highest in the hematological cancers (IR VTE ≥ 2 years after cancer diagnosis 6.5×10^{-3} p-y, 95% CI: 3.7–11.4). The corresponding IRRs of VTE in hematological cancers compared with their reference subjects in the total study period were also high (IRR: 4.0, 95% CI: 2.0–7.9) (▶ **Table 3**). Thus, the steeper slope of the cumulative incidence proportion of VTE in cancer-exposed subjects compared with reference subjects was mainly driven by the VTEs in hematological cancers. The IRs of VTE in subjects exposed to solid tumors were in general lower than

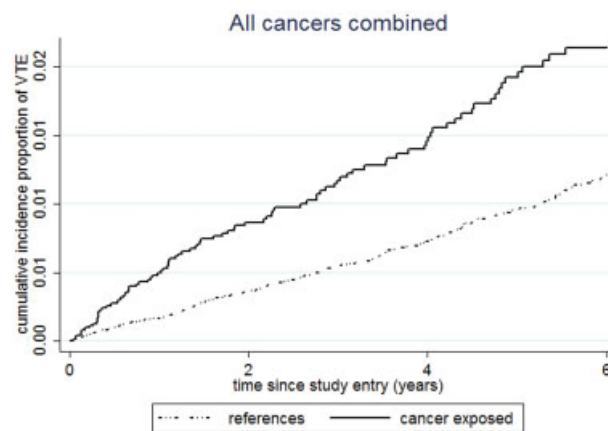


Fig. 1 Cumulative incidence proportion of venous thromboembolism (VTE) in cancer-exposed subjects and reference subjects. Death as well as first and second cancer, respectively, is treated as competing risks in reference subjects and cancer survivors.

in hematological cancers, but remained higher than reference subjects in colorectal and the group of other solid cancer types when VTEs that occurred at least 2 years after cancer diagnosis were included (▶ **Table 2**). The IRs of VTE in prostate and colorectal cancer resembled that observed in the reference subjects by successive time since cancer diagnosis (▶ **Table 2**). We observed no residual confounding by the aging since cancer diagnosis/index date (▶ **Table 3**).

The impact of initial cancer stage at diagnosis on the IR of VTEs in subjects exposed to solid cancer types was assessed in a separate analysis. The IRRs of VTE in subjects exposed to regional spread and distant metastatic cancers were 2.4 (95%

Table 2 IRs and IRDs of VTE in cancer-exposed subjects and their matched reference subjects by increasing time since cancer diagnosis

	Total study period, i.e., ≥ 2 y after cancer diagnosis				≥ 5 y after cancer diagnosis	
	Total VTE, n	Person time, y	IR per 1,000 p-y (95% CI)	IRD (95% CI)	IR per 1,000 p-y (95% CI)	IRD (95% CI)
All reference subjects combined	321	165,180	1.9 (1.7–2.2)	Ref.	2.1 (1.8–2.4)	Ref.
All cancer-exposed combined	110	30,021	3.7 (3.1–4.5)	1.8 (1.1 to 2.5)	3.3 (2.5–4.5)	1.3 (0.2 to 2.3)
Breast	19	8,098	2.3 (1.5–3.7)	0.9 (–0.3 to 2.0)	2.0 (1.0–4.1)	1.0 (–0.5 to 2.5)
Prostate	18	4,619	3.9 (2.5–6.2)	1.4 (–0.5 to 3.3)	3.3 (1.5–7.4)	0.3 (–2.6 to 3.2)
Colorectal	21	4,294	4.9 (3.2–7.5)	2.6 (0.5 to 4.8)	2.6 (1.1–6.4)	–0.6 (–3.1 to 1.9)
Other solid tumors	40	10,506	3.8 (2.8–5.2)	1.8 (0.6 to 3.1)	3.9 (2.5–6.2)	1.8 (0.0 to 3.7)
Hematological	12	1,853	6.5 (3.7–11.4)	4.9 (1.2 to 8.7)	8.0 (3.6–17.8)	6.3 (–0.3 to 12.7)

Abbreviations: CI, confidence interval; IR, incidence rate; IRD, incidence rate differences; p-y, person-year; Ref., reference; VTE, venous thromboembolism.

Table 3 Crude and adjusted IRRs of VTE in cancer-exposed subjects by increasing time since cancer diagnosis

	Total study period, i.e., > 2 y after cancer diagnosis				> 5 y after cancer diagnosis			
	IRR, crude	95% CI	IRR, adjusted ^a	95% CI	IRR, crude	95% CI	IRR, adjusted ^a	95% CI
All reference subjects combined	Ref.	–	Ref.	–	Ref.	–	Ref.	–
All cancer-exposed combined	1.8	1.5–2.2	1.8	1.5–2.2	1.8	1.4–2.4	1.8	1.4–2.4
Breast	1.7	1.1–2.7	1.7	1.0–2.6	2.6	1.3–5.0	2.5	1.3–4.9
Prostate	1.4	0.9–2.3	1.4	0.9–2.3	1.4	0.7–2.9	1.5	0.7–2.9
Colorectal	1.7	1.1–2.7	1.7	1.0–2.6	0.8	0.3–1.8	0.8	0.3–1.8
Other solid cancer	2.1	1.3–3.3	2.1	1.3–3.3	2.1	1.3–3.3	2.1	1.3–3.3
Hematological	4.0	2.0–7.9	4.2	2.2–8.1	4.7	1.9–11.6	5.2	2.1–12.4

Abbreviations: CI, confidence interval; IRR, incidence rate ratios; Ref., reference; VTE, venous thromboembolism.

^aAdjusted for age since study entry.

CI: 1.7–3.5) and 5.1 (95% CI: 2.7–9.5), respectively, compared with their reference subjects for the period 2 years after cancer diagnosis, which was higher than the subjects exposed to localized disease (1.5, 95% CI: 1.1–2.0). The IRRs for subjects exposed to initial regional spread or distant metastatic cancer tended to be lower >5 years after cancer diagnosis (–Table 4).

In the cancer-exposed subjects, 39.1% of the VTEs were provoked as compared with 36.4% in the reference subjects. This small excess of provoked VTE was not statistically significant ($p = 0.62$).

Discussion

In this population-based cohort, IRs of VTE in cancer-exposed subjects alive 2 years after their cancer diagnosis and free of VTE were compared with age- and gender-matched reference subjects. The IR of VTE was higher in all cancer-exposed subjects combined compared with the reference subjects in both study periods. However, in the solid cancer types, the IR fell successively by increasing time after cancer diagnosis resembling the IRs of VTE of their reference subjects over time, whereas in hematological cancers the IR

of VTE remained higher in cancer-exposed subjects compared with reference subjects throughout the study period. Initial distant metastasis was associated with a fivefold higher risk of developing a first time VTE more than 2 years after cancer diagnosis.

The hematological cancers encompassed a large proportion of multiple myeloma and chronic lymphocytic leukemia, which are incurable diseases repeatedly treated at relapses. Myeloma is well known for the associated high risk of VTE, and recent studies have shown that chronic lymphocytic leukemia may also be associated with a high incidence of VTE.^{4,36,37} The high long-term incidences of VTE in the hematological cancers might be due to anticancer treatments, but since IMiD-based combination therapy typically did not persist for years in the study period and guidelines recommended thromboprophylaxis, other factors may also contribute. It has been suggested that cancer cells contribute to hypercoagulability by releasing procoagulant microvesicles.³⁸ This may be associated with disease activity, and the activity fluctuates in the incurable hematological cancers. Therefore, this may explain a persistently increased risk of VTE several years after cancer diagnosis in the group of hematological cancers. Along the same line, the observed

Table 4 Crude and adjusted IRRs of VTE stratified on initial cancer stage in cancer-exposed subjects compared with their controls by increasing time since cancer diagnosis

	Total study period, i.e., > 2 y after cancer diagnosis					> 5 y after cancer diagnosis			
	VTE (n)	IRR, crude	95% CI	IRR, adjusted ^a	95% CI	IRR, crude	95% CI	IRR, adjusted ^a	95% CI
Localized disease	43	1.5	1.1–2.0	1.2	0.6–2.2	2.0	1.3–2.9	2.0	1.0–4.2
Regional spread	36	2.4	1.7–3.5	1.9	1.0–3.6	1.5	0.8–2.7	1.4	0.5–3.9
Distant metastasis	13	5.1	2.7–9.5	6.3	1.4–28.5	3.7	1.2–11.3	3.3	1.0–10.8
Actively coded “Unknown stage”	18	1.4	0.9–2.2	0.8	0.2–3.2	1.8	1.0–3.3	0.8	0.1–5.6

Abbreviations: CI, confidence interval; IRR, incidence rate ratios; Ref., reference; VTE, venous thromboembolism.

^aAdjusted for age since study entry and cancer type.

persistently higher risk of VTE in subjects exposed to initial metastatic cancer is probably, still to some degree, attributable to cancer activity or treatments.

It is relevant to appreciate the validated outcomes in our study since a validation study has shown that discharge diagnoses of VTE from the National Patient Registry had a positive predictive value of approximately 75%.³⁵ Consequently direct comparison of IRs of VTE in this study with other studies is difficult. A recent population-based Swedish study on time-dependent risk of VTE in breast cancer patients found a 5-year cumulative incidence of 4.0% in breast cancer patients, while in age-matched controls the 5-year cumulative incidence of VTE was 1.1%. The presented measures of association were calculated from date of cancer diagnosis, thus encompassing the large proportion of VTEs that occurred during the first year of the study period.¹⁴ As we started our study 2 years after cancer diagnosis and further analyzed at points corresponding to 5 years after cancer diagnosis, the former VTEs did not contribute to the association measures in our study, and consequently the IRs of VTE were only marginally higher in breast cancer-exposed subjects compared with their reference subjects. In the Swedish study, the cumulative incidence curves of VTE that occurred later than 2 years after breast cancer/index date is only slightly steeper for the breast cancer exposed than for the matched cohort reflecting marginally increased risk of VTE in breast cancer-exposed subjects, in accordance with our results. In a Danish population-based cohort study, the reported IRs of VTE that occurred more than 2 years after cancer diagnosis were in general higher than we observed.³ Their use of discharge diagnoses from the National Patient Registry, a broader definition of VTE and no censoring in case of a second primary cancer diagnosis, may explain this, although the variation is minor. A recent Danish population-based study on VTE in prostate cancer found that a low to moderate comorbidity in combination with cancer could increase the risk of VTE more than expected from their individual effects.³⁹ The reported rates and rate ratios of VTE were similar to our results. However, we did not have the opportunity to include comorbidity in our study, which would have been beneficial.

The results from our study should be interpreted within its limitations, of which the lack of information on comorbidity, anticoagulation, and chemotherapy are the most important. Furthermore, we have too few events in some groups to give meaningful estimates of IR and associated association measures, which is also the reason why hematological cancers were combined in one group despite their varying phenotypes and risks of VTE. The myeloproliferative and myelodysplastic disorders were not included because they were not available in the registries, but we would expect the number of VTEs to be very limited in these groups. We cannot rule out misclassification due to second primary cancers, but this would probably be nondifferential and only comprise a minor proportion which most probably would not affect the presented estimates of occurrence and association. Another limitation is the inability to obtain valid information on cancer relapses from the national

cancer registries and we may, therefore, overestimate the IRs of VTE in the cancer-exposed subjects. This would expectedly, in particular, be an important factor among those exposed to hematological cancer types. On the other hand, despite the potential overestimation of IR of VTE in the cancer-exposed subjects, the IRs of VTE in subjects exposed to breast, colorectal, and prostate cancer were not significantly higher compared with their reference subjects 5 years after the cancer diagnosis.

We know from unpublished data that 127 of VTEs observed in the STAC cohort occurred within 1 year before a first cancer diagnosis. Seventeen of these VTEs counted as events among reference subjects in this study; when compared with the total number of 321 VTEs in the reference subjects, they will have a minor effect on the resulting increased IR of VTE in the reference group and would draw our results toward the null hypothesis. The cancer-exposed group is a mix of cured and uncured patients, and the risk of VTE years after a cancer diagnosis would expectedly differ by this fact as reflected in the different risks of VTE according to cancer types and initial cancer stage. The proportion of cured and uncured patients in our cohort should, however, resemble the mix of cancer patients usually seen in hospitals.

Successively improved cancer treatments and accelerated cancer-diagnosing programs have increased the proportion of 5-year cancer survivors steadily during the past years.⁴⁰ With these recent advances, it is becoming increasingly relevant to describe health among cancer survivors. Our observations are particularly relevant for the cancer patients having survived to be discharged from the oncologic outpatient clinics, which would be at 3 to 5 years for most cancer types (in the Danish health care system).

To the best of our knowledge, this is the first population-based study to specifically investigate the incidence of VTE in subjects exposed to cancer being alive when the acute effect of the cancer and its treatments on the risk of VTE attenuated some years after the diagnosis. In conclusion, our study indicates that the risk of a first VTE in cancer-exposed subjects alive more than 2 years after their cancer was diagnosed is modestly elevated compared with the background population, a finding mainly due to sustained VTE occurrence in the hematological cancers.

Conflicts of Interest

Dr. Hansen reports grants from Stiftelsen Kristian Gerhard Jebsen, during the conduct of the study. Dr. Kristensen reports grants from The Obel Family Foundation, during the conduct of the study. All the other authors report no conflict of interest.

Funding

K.G. Jebsen Thrombosis Research and Expertise Center (TREC) received an independent research grant from Stiftelsen Kristian Gerhard Jebsen. Professor S.R. Kristensen received an independent research grant from The Obel Family Foundation and from the Danish Council for Independent Research.

Acknowledgments

The authors wish to thank Helle Højmark Eriksen, biostatistician at the Unit of Clinical Biostatistics and Bioinformatics, Aalborg University Hospital, for her expertise help in data management and analysis.

References

- Cohen AT, Katholing A, Rietbrock S, Bamber L, Martinez C. Epidemiology of first and recurrent venous thromboembolism in patients with active cancer. A population-based cohort study. *Thromb Haemost* 2017;117(01):57–65
- Walker AJ, Card TR, West J, Crooks C, Grainge MJ. Incidence of venous thromboembolism in patients with cancer - a cohort study using linked United Kingdom databases. *Eur J Cancer* 2013;49(06):1404–1413
- Cronin-Fenton DP, Søndergaard F, Pedersen LA, et al. Hospitalisation for venous thromboembolism in cancer patients and the general population: a population-based cohort study in Denmark, 1997–2006. *Br J Cancer* 2010;103(07):947–953
- Blom JW, Vanderschoot JP, Oostindier MJ, Osanto S, van der Meer FJ, Rosendaal FR. Incidence of venous thrombosis in a large cohort of 66,329 cancer patients: results of a record linkage study. *J Thromb Haemost* 2006;4(03):529–535
- Khorana AA, Francis CW, Culakova E, Kuderer NM, Lyman GH. Frequency, risk factors, and trends for venous thromboembolism among hospitalized cancer patients. *Cancer* 2007;110(10):2339–2346
- Stein PD, Beemath A, Meyers FA, Skaf E, Sanchez J, Olson RE. Incidence of venous thromboembolism in patients hospitalized with cancer. *Am J Med* 2006;119(01):60–68
- Chew HK, Wun T, Harvey D, Zhou H, White RH. Incidence of venous thromboembolism and its effect on survival among patients with common cancers. *Arch Intern Med* 2006;166(04):458–464
- Timp JF, Braekkan SK, Versteeg HH, Cannegieter SC. Epidemiology of cancer-associated venous thrombosis. *Blood* 2013;122(10):1712–1723
- Blom JW, Doggen CJ, Osanto S, Rosendaal FR. Malignancies, prothrombotic mutations, and the risk of venous thrombosis. *JAMA* 2005;293(06):715–722
- Walker AJ, Baldwin DR, Card TR, Powell HA, Hubbard RB, Grainge MJ. Risk of venous thromboembolism in people with lung cancer: a cohort study using linked UK healthcare data. *Br J Cancer* 2016;115(01):115–121
- Alcalay A, Wun T, Khatri V, et al. Venous thromboembolism in patients with colorectal cancer: incidence and effect on survival. *J Clin Oncol* 2006;24(07):1112–1118
- Walker AJ, West J, Card TR, Crooks C, Kirwan CC, Grainge MJ. When are breast cancer patients at highest risk of venous thromboembolism? A cohort study using English health care data. *Blood* 2016;127(07):849–857, quiz 953
- Walker AJ, West J, Card TR, Humes DJ, Grainge MJ. Variation in the risk of venous thromboembolism in people with colorectal cancer: a population-based cohort study from England. *J Thromb Haemost* 2014;12(05):641–649
- Brand JS, Hedayati E, Bhoo-Pathy N, et al. Time-dependent risk and predictors of venous thromboembolism in breast cancer patients: a population-based cohort study. *Cancer* 2017;123(03):468–475
- Chew HK, Wun T, Harvey DJ, Zhou H, White RH. Incidence of venous thromboembolism and the impact on survival in breast cancer patients. *J Clin Oncol* 2007;25(01):70–76
- Ording AG, Nielsen ME, Smith AB, Horváth-Puhó E, Sørensen HT. Venous thromboembolism and effect of comorbidity in bladder cancer: a Danish nationwide cohort study of 13,809 patients diagnosed between 1995 and 2011. *Urol Oncol* 2016;34(07):292.e1–292.e8
- Lund JL, Østgård LS, Prandoni P, Sørensen HT, de Nully Brown P. Incidence, determinants and the transient impact of cancer treatments on venous thromboembolism risk among lymphoma patients in Denmark. *Thromb Res* 2015;136(05):917–923
- Rodriguez AO, Wun T, Chew H, Zhou H, Harvey D, White RH. Venous thromboembolism in ovarian cancer. *Gynecol Oncol* 2007;105(03):784–790
- Sandhu R, Pan CX, Wun T, et al. The incidence of venous thromboembolism and its effect on survival among patients with primary bladder cancer. *Cancer* 2010;116(11):2596–2603
- Rodriguez AO, Gonik AM, Zhou H, Leiserowitz GS, White RH. Venous thromboembolism in uterine cancer. *Int J Gynecol Cancer* 2011;21(05):870–876
- Chew HK, Davies AM, Wun T, Harvey D, Zhou H, White RH. The incidence of venous thromboembolism among patients with primary lung cancer. *J Thromb Haemost* 2008;6(04):601–608
- Jensvoll H, Severinsen MT, Hammerstrøm J, et al. Existing data sources in clinical epidemiology: the Scandinavian Thrombosis and Cancer Cohort. *Clin Epidemiol* 2015;7:401–410
- Tjønneland A, Olsen A, Boll K, et al. Study design, exposure variables, and socioeconomic determinants of participation in Diet, Cancer and Health: a population-based prospective cohort study of 57,053 men and women in Denmark. *Scand J Public Health* 2007;35(04):432–441
- Jacobsen BK, Eggen AE, Mathiesen EB, Wilsgaard T, Njølstad I. Cohort profile: the Tromsø Study. *Int J Epidemiol* 2012;41(04):961–967
- Krokstad S, Langhammer A, Hveem K, et al. Cohort profile: the HUNT Study, Norway. *Int J Epidemiol* 2013;42(04):968–977
- Danish Health Authority. Det moderne Cancerregister – metode og kvalitet. 2009:1–30. Available at: <https://sundhedsdatastyrelsen.dk/-/media/sds/filer/register-og-services/nationale-sundhedsregistre/sygedomme-laegemidler-og-behandling/cancerregisteret/det-moderniserede-cancerregister.pdf?la=da>. Accessed November 21, 2017
- Kreft registeret. Dokumentasjon av Kreftregisterets variabler. 2015 (versjon 4.1.9.11):1. Available at: https://www.kreftregisteret.no/contentassets/6b389374314344d8a37726aa4d79c732/dokumentasjon_av_variabler-v4.1.pdf. Accessed November 21, 2017
- Storm HH, Michelsen EV, Clemmensen IH, Pihl J. The Danish Cancer Registry—history, content, quality and use. *Dan Med Bull* 1997;44(05):535–539
- Larsen IK, Småstuen M, Johannesen TB, et al. Data quality at the Cancer Registry of Norway: an overview of comparability, completeness, validity and timeliness. *Eur J Cancer* 2009;45(07):1218–1231
- Friis S, Jørgensen T, Mellekjær L. Validation of the Danish Cancer Registry and Selected Clinical Cancer Databases. Copenhagen, Denmark: Danish Cancer Society; 2012:1–2
- Walters S, Maringe C, Butler J, Brierley JD, Rachet B, Coleman MP. Comparability of stage data in cancer registries in six countries: lessons from the International Cancer Benchmarking Partnership. *Int J Cancer* 2013;132(03):676–685
- Gade IL, Braekkan SK, Naess IA, et al. The impact of initial cancer stage on the incidence of venous thromboembolism: the Scandinavian Thrombosis and Cancer (STAC) Cohort. *J Thromb Haemost* 2017;15(08):1567–1575
- Braekkan SK, Mathiesen EB, Njølstad I, Wilsgaard T, Størmer J, Hansen JB. Mean platelet volume is a risk factor for venous thromboembolism: the Tromsø Study, Tromsø, Norway. *J Thromb Haemost* 2010;8(01):157–162
- Naess IA, Christiansen SC, Romundstad P, Cannegieter SC, Rosendaal FR, Hammerstrøm J. Incidence and mortality of venous

- thrombosis: a population-based study. *J Thromb Haemost* 2007;5(04):692–699
- 35 Severinsen MT, Kristensen SR, Overvad K, Dethlefsen C, Tjønneland A, Johnsen SP. Venous thromboembolism discharge diagnoses in the Danish National Patient Registry should be used with caution. *J Clin Epidemiol* 2010;63(02):223–228
- 36 Whittle AM, Allsup DJ, Bailey JR. Chronic lymphocytic leukaemia is a risk factor for venous thromboembolism. *Leuk Res* 2011;35(03):419–421
- 37 Šimkovič M, Vodárek P, Motyčková M, et al. Venous thromboembolism in patients with chronic lymphocytic leukemia. *Thromb Res* 2015;136(06):1082–1086
- 38 Geddings JE, Mackman N. Tumor-derived tissue factor-positive microparticles and venous thrombosis in cancer patients. *Blood* 2013;122(11):1873–1880
- 39 Ording AG, Horváth-Puhó E, Lash TL, et al. Prostate cancer, comorbidity, and the risk of venous thromboembolism: a cohort study of 44,035 Danish prostate cancer patients, 1995–2011. *Cancer* 2015;121(20):3692–3699
- 40 De Angelis R, Sant M, Coleman MP, et al; EURO CARE-5 Working Group. Cancer survival in Europe 1999–2007 by country and age: results of EURO CARE-5—a population-based study. *Lancet Oncol* 2014;15(01):23–34