



Aalborg Universitet

AALBORG UNIVERSITY  
DENMARK

## Incidence of new onset cancer in patients with a myocardial infarction - a nationwide cohort study

Malmborg, Morten; Christiansen, Christine Benn; Schmiegelow, Michelle D.; Torp-Pedersen, Christian; Gislason, Gunnar; Schou, Morten

*Published in:*  
BMC Cardiovascular Disorders

*DOI (link to publication from Publisher):*  
[10.1186/s12872-018-0932-z](https://doi.org/10.1186/s12872-018-0932-z)

*Creative Commons License*  
CC BY 4.0

*Publication date:*  
2018

*Document Version*  
Publisher's PDF, also known as Version of record

[Link to publication from Aalborg University](#)

*Citation for published version (APA):*  
Malmborg, M., Christiansen, C. B., Schmiegelow, M. D., Torp-Pedersen, C., Gislason, G., & Schou, M. (2018). Incidence of new onset cancer in patients with a myocardial infarction - a nationwide cohort study. *BMC Cardiovascular Disorders*, 18, 1-9. Article 198. <https://doi.org/10.1186/s12872-018-0932-z>

### General rights

Copyright and moral rights for the publications made accessible in the public portal are retained by the authors and/or other copyright owners and it is a condition of accessing publications that users recognise and abide by the legal requirements associated with these rights.

- Users may download and print one copy of any publication from the public portal for the purpose of private study or research.
- You may not further distribute the material or use it for any profit-making activity or commercial gain
- You may freely distribute the URL identifying the publication in the public portal -

### Take down policy


If you believe that this document breaches copyright please contact us at [vbn@aub.aau.dk](mailto:vbn@aub.aau.dk) providing details, and we will remove access to the work immediately and investigate your claim.

RESEARCH ARTICLE

Open Access



# Incidence of new onset cancer in patients with a myocardial infarction – a nationwide cohort study

Morten Malmborg<sup>1\*</sup> , Christine Benn Christiansen<sup>1,2</sup>, Michelle D. Schmiegelow<sup>1</sup>, Christian Torp-Pedersen<sup>3</sup>, Gunnar Gislason<sup>1,4</sup> and Morten Schou<sup>1</sup>

## Abstract

**Background:** Few studies have suggested that patients with myocardial infarction (MI) may be at increased risk of cancer, but further large register-based studies are needed to evaluate this subject. The aim of this study was to assess the incident rates of cancer and death by history of MI, and whether an MI is independently associated with cancer in a large cohort study.

**Method:** All Danish residents aged 30–99 in 1996 without prior cancer or MI were included and were followed until 2012. Patients were grouped according to incident MI during follow-up. Incidence rates (IR) of cancer and death in individuals with and without MI and incidence rate ratios (IRR, using multivariable Poisson regression analyses) of cancer associated with an MI were calculated.

**Results:** Of 2,871,168 individuals, 122,275 developed an MI during follow-up, 11,375 subsequently developed cancer (9.3%, IR 19.1/1000 person-years) and 65,225 died (53.3%, IR 106.0/1000 person-years). In the reference population, 372,397 developed cancer (13.0%, IR 9.3/1000 person-years) and 753,767 died (26.3%, IR 18.2/1000 person-years). Compared to the reference population, higher IRs of cancer and death were observed in all age groups (30–54, 55–69 and 70–99 years) and time since an MI (0–1, 1–5 and 5–17 years) in the MI population. MI was associated with an increased risk of overall cancer (IRR 1.14, 95% CI 1.10–1.19) after adjusting for age, sex and calendar year, also when additionally adjusting for chronic obstructive pulmonary disease, hypertension, dyslipidemia, diabetes and socioeconomic status (IRR 1.08, 95% CI 1.03–1.13), but not after further adjustment for the first 6 months post-MI (IRR 1.00, 95% CI 0.96–1.05).

**Conclusion:** Patients after an MI have increased incidence of cancer, which may be explained by mutual risk, occult cancers and increased surveillance. Focus on risk factor management to reduce cancer and MI is warranted.

**Keywords:** Myocardial infarction, Cancer, Epidemiology, Patient registries

## Background

Ischemic heart disease and cancer are the two primary causes of death worldwide. Denmark is the only country in Europe where cancer has surpassed cardiovascular disease as the primary cause of death in both women and men [1, 2]. Due to improved management of MI patients such as increased use of prophylactic pharmacotherapy and more available use of cardiac

revascularization, mortality rates after an MI, short-term as well as long-term, have decreased over the past decades [3, 4]. Consequently, the increasing number of MI survivors are at risk of dying from non-cardiac competing causes of death, cancer in particular, as has previously been demonstrated for STEMI patients following percutaneous coronary intervention [5, 6] and among patients with heart failure [7].

The association between cancer and MI is biologically plausible due to shared pathogenesis such as oxidative stress [8, 9] and shared risk factors (i.e. tobacco, alcohol

\* Correspondence: [mortenmalmborg@gmail.com](mailto:mortenmalmborg@gmail.com)

<sup>1</sup>Department of Cardiology, Herlev and Gentofte Hospital, Hjertemedicinsk forskning 1, Kildegårdsvej 28, opg. 8, 3.sal tv, DK-2900 Hellerup, Denmark  
Full list of author information is available at the end of the article



consumption, obesity, physical inactivity, unhealthy food consumption and metabolic disorders such as hypertension, dyslipidemia and diabetes) [10, 11]. Additionally, occult cancers are prothrombotic [12] and increase the risk of MI [13]. However, the risk of cancer following an MI remains scarcely investigated. Although, three studies have found an increased risk of cancer after an MI, [14–16] of which the two oldest studies found an increased risk of predominantly tobacco-related cancers, none of them have taken the high mortality after an MI into account.

To evaluate the association between an MI and cancer there are a number of caveats that need to be accounted for, which involves analyses of competing risk and surveillance bias. Due to high mortality rates after an MI, an independent association between an MI and cancer may, therefore, have been overlooked in previous studies, and the possible association calls for further investigations.

Therefore, the aims of this study were to assess the incident rates of cancer and death by history of MI, as well as the association between an MI and new onset cancer in patients surviving a first-time MI compared with the reference population.

## Methods

### Data sources

All residents in Denmark receive a unique and permanent civil registration number at birth or immigration that enables linkage between nationwide registers at an individual level. Data for this study were obtained from four large Danish registries: The Danish Civil Registration System registry, the Danish National Patient Registry (NPR), the National Causes of Death Registry and the Danish National Prescription Registry. From the Danish Civil Registration System registry we obtained information on sex, date of birth and vital status (recorded within two weeks from the event), whereas causes of death were obtained from the National Causes of Death Registry and classified according to the International Classification of Diseases (ICD)-8 until 1993 and ICD-10 from 1994 and onwards. From the National Patient Registry we achieved information on all hospital admissions since 1977 with diagnoses coded according to the ICD system. Lastly, we obtained information on all claimed prescriptions in Denmark since 1995 from the Danish National Prescription Registry according to the Anatomical Therapeutic Chemical (ATC).

### Study population

Our study population comprised all individuals aged 30–99 years residing in Denmark on 1 January 1996. Patients with a first-time diagnosis of MI (ICD-8 code 410, ICD-10 codes I21–22) or first-time cancer

(ICD-8 codes 140–209, ICD-10 codes C00–96) prior to 1 January 1996 were excluded, as were individuals who had a first-time diagnosis of cancer and MI on the same day during follow-up. Patients were grouped according to incident MI during follow-up. Thus, the reference population comprised the total Danish population without prior MI or cancer in 01 January 1996, and the MI population comprised those individuals from the reference population who developed an MI during follow-up without prior cancer at the time of an MI. The ICD-8 diagnosis of an MI in the NPR has been validated in the Danish MONICA (Monitoring Trends and Determinants in Cardiovascular Disease) study with a positive predictive value of 93.5% for definite or possible MI and a sensitivity of 92.8% for definite MI [17]. The ICD-10 diagnosis of MI as well as cancer in the NPR has been validated with a positive predictive value of 98% and 98–100%, respectively [18, 19].

The following comorbidities were identified: hypertension, dyslipidemia, diabetes and chronic obstructive pulmonary disease (ICD-8 codes 490–492 and ICD-10 codes J42, J44). Hypertension was defined as combination treatment with at least two classes of antihypertensive drugs within 90 days, as previously validated [20]. Diabetes mellitus was defined as the use of glucose-lowering medication (ATC A10), [21] and dyslipidemia as claimed prescriptions of lipid modifying agents (C10A). Medications at baseline were defined as dispensed prescriptions prior to inclusion for aspirin (B01AC06 and N02BA01), renin-angiotensin system inhibitors (C09AA, C09BA, C09BB, C09CA, C09DA, C09DB, C09XA02 and C09XA52), calcium channel blockers (C08, C07F, C09BB and C09DB), beta-blockers (ATC C07A–C07D and C07F) and statins (C10AA).

Socioeconomic status was identified as educational attainment and categorized as follows: (1) Basic education (primary, lower secondary); (2) upper secondary (general secondary, technical secondary); (3) vocational; (4) short or medium length higher education (Academy Profession Degree, Professional Bachelor's Degree, university Bachelor's Degree); (5) Master's Degree or Ph.D. Degree; (6) unknown.

### Outcomes

The primary outcome was any incident cancer reported in the NPR or as cause of death (ICD-10 codes C00–96). From the NPR we also obtained information on the five most common types of cancer types according to the Association of Nordic Cancer Registries: Lung cancer including trachea and bronchus (C33–34), colorectal (C18–20), breast (C50), prostate (C61) and lower urinary tract cancer (LUT, ureters, bladder and urethra) (C66–68.0).

## Statistics

The reference population was followed from 1 January 1996 until an MI event, death, cancer event, emigration, age 100 or 31 December 2012, whichever came first, and the MI population was followed from diagnosis of MI until death, cancer event, emigration, age 100 or 31 December 2012, whichever came first.

We calculated crude incidence rates (IR) of cancer and death stratified by age groups (30–54, 55–69 and 70–99 years of age) and time since a diagnosis of MI (0–1, 1–5 and 5–17 years post-MI). We further examined the cumulative incidence of cancer according to history of an MI and age groups in which the competing risk of death was taken into account. We used a 0–1–2 outcome variable to determine those with no cancer diagnosis or date of death, those who received a cancer diagnosis or died from cancer, and those who died from other causes than cancer, respectively.

We used time-dependent multivariable Poisson regression models to examine the incidence rate ratios (IRR) of cancer associated with an MI, as previously performed [22]. Each individual contributed with disease-free exposure time until date of diagnosis of MI, and from this day onwards with time exposed for the disease. We used the lexis-macro [23] prior to all analyses to create three time scales: age (bands were split into 2-year intervals), calendar year (1-year intervals since January 1, 1996) and time following MI (1, 3, 6 and 12 months and every year hereafter). Dichotomous variables were created for MI (MI/no MI), and age was calculated at the beginning of each interval. Prior to the date of their first MI, individuals contributed risk time to the reference population, which in all analyses consisted of the general Danish population without MI.

We assessed the associations between MI and subsequent risk of cancer by two approaches. In the main analyses, we examined the association between MI and subsequent cancer risk according to time following MI (adjusted for sex, age and calendar year). Secondly, we explored the IRRs of cancer associated with MI stratified by age compared with risk of cancer in the reference population (adjusted for sex and calendar year). The same approach was used for the five selected types of cancers. All statistical analyses were conducted using SAS, version 9.4 (SAS institute, Cary, NC, USA).

## Sensitivity analyses

In accordance with our hypothesis, increased risk of cancer in MI patients could be confounded by shared risk factors or comorbidities that are markers of risk factors [24]. We, therefore, conducted sensitivity analyses,

in which we adjusted for dyslipidemia, hypertension, diabetes mellitus, chronic obstructive pulmonary disease and socioeconomic status.

The same analyses were performed without the first six months following an MI, as this period of time is most likely to be affected by surveillance bias.

## Results

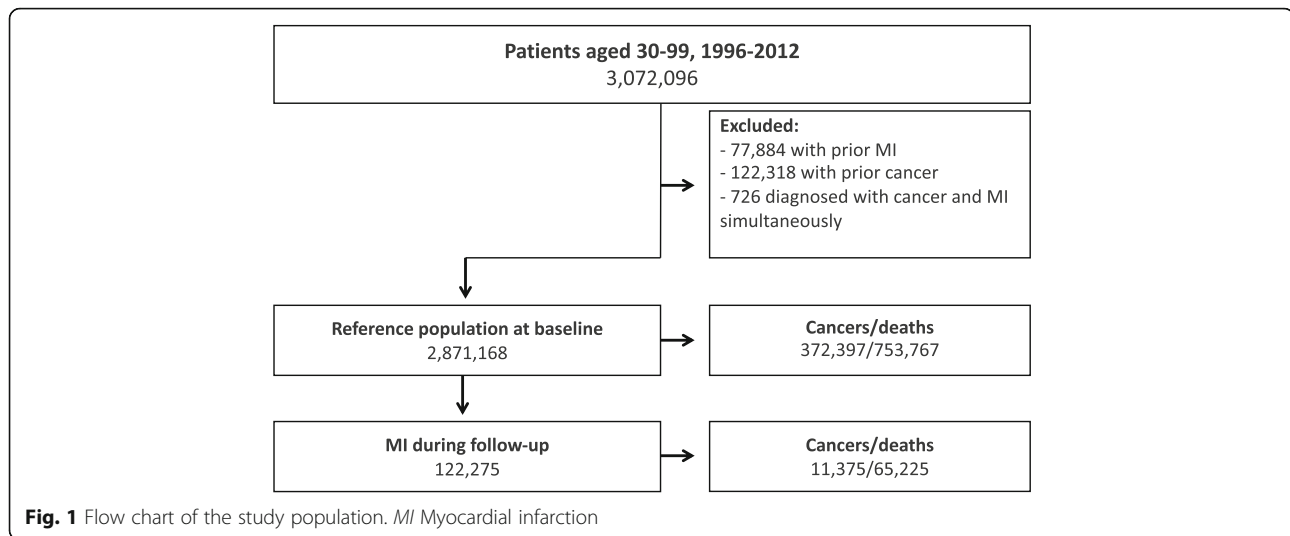
### Patient selection and study population characteristics

Following exclusion of individuals according to the pre-defined criteria, the final population comprised 2,871,168 individuals without prior MI or cancer, and 122,275 individuals subsequently developed an MI (Fig. 1). At baseline, both men and women had a median age of about 50 years, whereas women were about 9 years older than men at time of first MI (Table 1). Individuals with MI were more often men and had a higher proportion of chronic obstructive pulmonary disease, hypertension, dyslipidemia and diabetes than the reference population at baseline.

### Risk of cancer and death, cumulative incidence functions and causes of death

During mean follow-up, 11,375 (9.3%) of the MI patients developed first-time cancer and 65,225 (53.3%) died, whereas 372,397 (13.0%) individuals in the reference population developed cancer and 753,767 (26.3%) died (Fig. 1). The IRs of cancer and death increased with advancing age in both populations, but both cancer and death were more frequent among MI patients in all age groups, as well as time following MI (Fig. 2 and Additional file 1: Figure S1A-C). The highest incidences of death and cancer were observed during the first year following MI (Additional file 1: Figure S1A-C), but the incidence of death was higher than cancer, especially during the first year after an MI. In the reference population, the incidence of cancer was comparable to the incidences of death, except in the oldest individuals, in whom risk of death was higher than cancer risk (Fig. 2 and Additional file 1: Figure S1A-C). In MI patients, lung and prostate cancer were the most common subtypes of cancer, whereas breast cancer was the most common cancer in the reference population (Additional file 2: Table S1).

According to age and continuous time since MI, the cumulative incidence of cancer increased steadily, although the incidence rate for the oldest age group decreased over time and crossed the incidence rate of 55–69 year olds after approximately 7 years of follow-up (Additional file 1: Figure S2). In all age groups, cumulative incidence of death showed high mortality right after diagnosis of MI (Additional file 1: Figure S3).



### Relative risk of cancer

The highest risk of overall cancer was observed during the first month after an MI diagnosis with a subsequent decrease, reaching a somewhat constant level 6 months following a first time MI diagnosis (Additional file 2: Table S2A-B).

MI patients had significantly increased risks of overall, lung and lower urinary tract cancer after adjustment for age, sex and calendar year (Fig. 3a), also after additional adjustment for diabetes, hypertension, dyslipidemia, chronic obstructive pulmonary disease

**Table 1** Baseline characteristics

	Reference population in 01 January 1996	MI population at time of MI
n	2,871,168	122,275
No. of person-years	40,038,194	594,061
Female, n (%)	1,493,795 (52.0)	47,501 (38.8)
Median age (IQR)		
Men	49.5 (39.5–61.3)	59.2 (49.5–69.5)
Women	51.7 (41.0–66.4)	68.5 (58.1–76.0)
Comorbidity, n (%)		
COPD	37,001 (1.3)	11,032 (9.0)
Dyslipidemia	13,794 (0.5)	21,408 (17.6)
Diabetes mellitus	58,495 (2.0)	15,154 (12.4)
Hypertension	116,249 (4.1)	17,187 (14.1)
Medication, n (%)		
Aspirin	121,922 (4.3)	44,145 (36.1)
Renin-angiotensin inhibitors	92,811 (3.2)	37,562 (30.7)
Calcium channel blockers	124,708 (4.3)	36,787 (30.1)
Beta blockers	121,792 (4.2)	33,771 (27.6)
Statins	10,638 (0.4)	21,200 (17.3)

MI = myocardial infarction, IQR = interquartile range. COPD = chronic obstructive pulmonary disease

and socioeconomic status (Fig. 3b). When further excluding the first 6 months following an MI, only lower urinary tract cancer remained significantly increased among MI patients (Fig. 3c). The risks of overall, lung, colorectal and lower urinary tract cancer were highest in the youngest age group (30–54) of MI patients and decreased with advancing age (55–69 years of age and 70–99 years of age, Additional file 2: Table S3A-C). Women were generally at increased risk of cancer compared to men (p for interaction < 0.0001), and the difference in risk of cancer attenuated after adjustment for comorbidities (Additional file 2: Table S4).

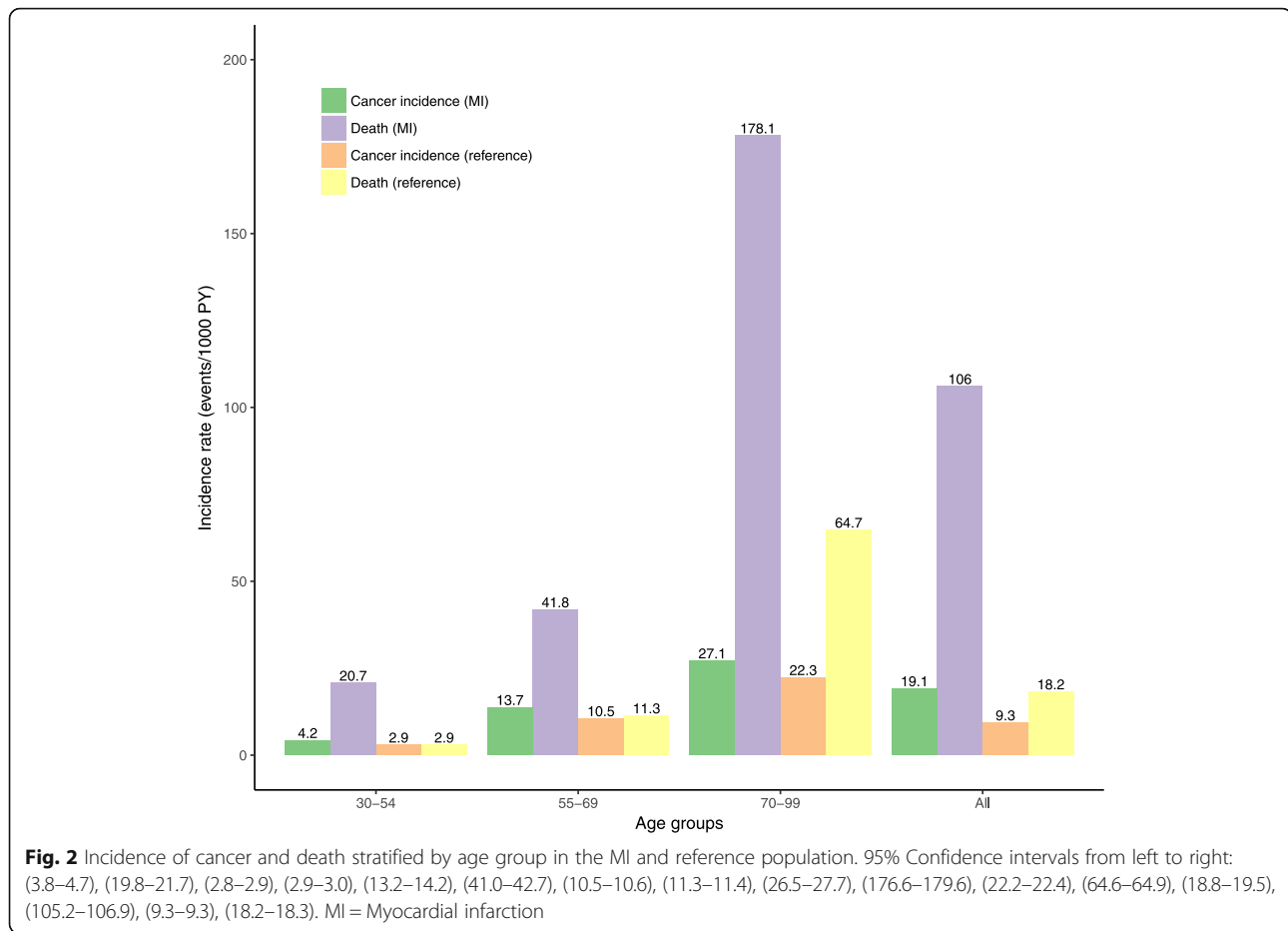
### Discussion

#### Major findings

In this nationwide study, we observed that an MI is only modest associated with an increased risk of cancer after adjustment for traditional confounders, mutual risk factors and comorbidities and it became insignificant after exclusion of the first 6 months after the MI, suggesting that mutual risk factors, occult cancers and surveillance bias explain the increased incidence of cancer in the MI population.

#### Incidence rates of cancer and death

The observation of increased cancer risk in the years following a diagnosis of MI is in accordance with previous studies [5, 6, 14–16] and age-stratified analyses did not change this observation. This finding may in part reflect surveillance bias and occult cancers in the early phase (0–1 year) after an MI, however, the surviving MI patients continued their lives at increased cancer risk compared with the reference population. It should be noted that since patients with a previous cancer diagnosis were excluded, end-stage cancer patients did not explain these findings. The cumulative incidence of cancer



after an MI continued to increase over time in the two youngest age groups confirming that younger long-term survivors from an MI have an increased risk of cancer despite an increased risk of death compared to the reference population. The risk of cancer after an MI is, therefore, highest the first year after an MI, but despite a high risk of death, cancer continues to develop over time. A high mortality risk in the early years after an MI is, therefore, a larger clinical challenge than development of comorbidities such as cancer, and more research in mode of death and development of cardiovascular drugs for secondary prevention of cardiovascular death is still warranted.

#### Relative risks of cancer (Poisson regression analyses)

The associations between a history of MI and cancer risk were largely attenuated following adjustment for comorbidities and became insignificant after adjustment for the first 6 months post-MI, suggesting that mutual risk factors, occult cancers and surveillance bias, and not a shared pathogenesis (e.g. oxidative stress between atherosclerosis and cancer), may explain the increased incidence of cancer after an MI. This is supported by the

fact that the two smoke related cancers, lung and lower urinary tract cancer, seemed to be associated with MI before adjustment for comorbidities. Nonetheless, risk of lower urinary tract cancers remained significantly increased after full adjustment, which can likely be explained by unmeasured and residual confounding, e.g. history of tobacco. Based on our data, it is, however, difficult to explain the exact mechanism(s) why the association became insignificant after adjustment for comorbidities, but it may be speculated that environmental factors like tobacco and alcohol [25], unhealthy diet, shared genetic susceptibility, inflammation [26, 27] and medication play a role, since these mechanisms are reflected in the confounders adjusted for in the analyses. Furthermore, a previous study observed an increased incidence of cancer after MI in patients with heart failure compared to those without heart failure after MI [28]. Thus, eliminating comorbidities may have eliminated the sicker patients more prone to post-MI heart failure. Lastly, it should be mentioned that analyses in cumulative incidence showed that cancer may be even less of a concern in absolute measures than indicated by relative measures.

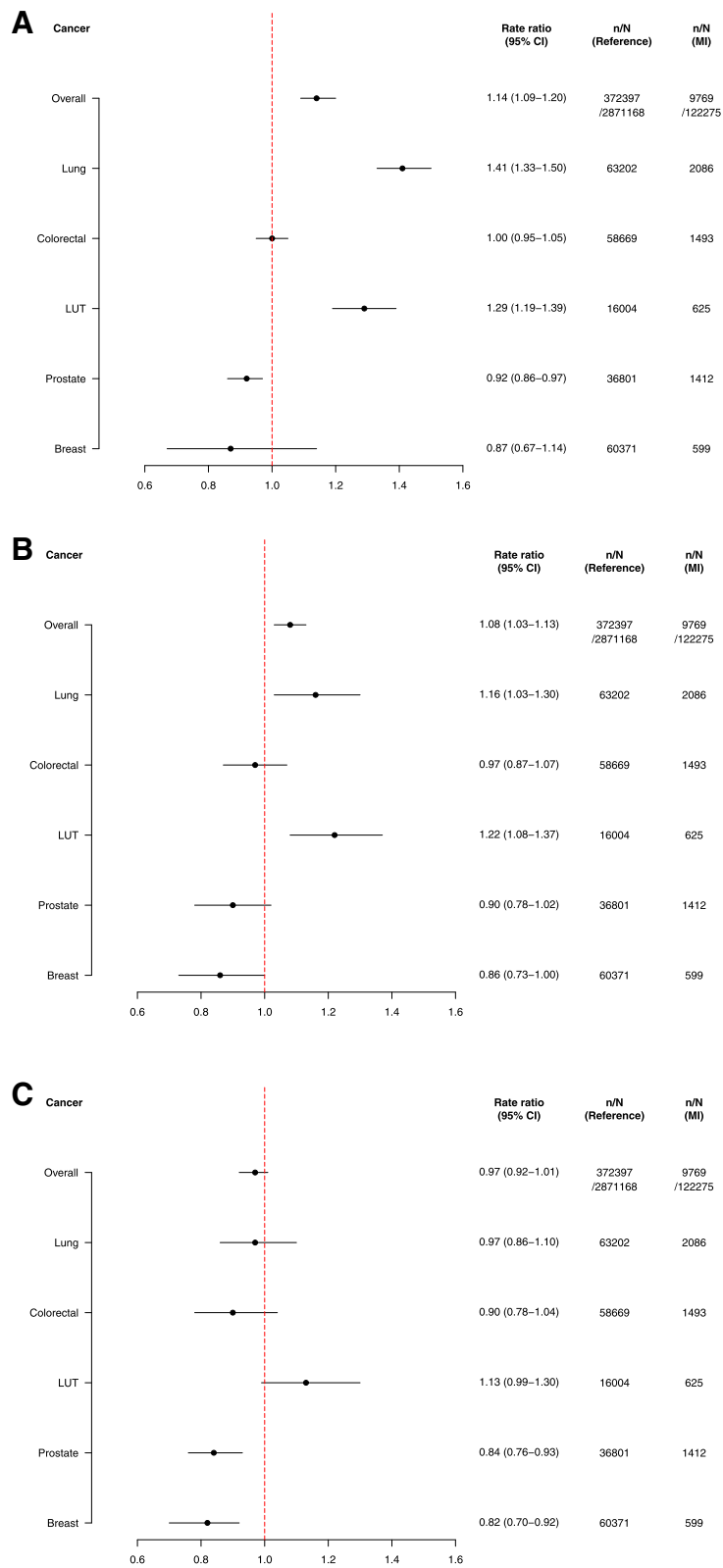


Fig. 3 (See legend on next page.)

(See figure on previous page.)

**Fig. 3 a** Incidence rate ratios of overall cancer and selected subtypes of cancer associated with a myocardial infarction. Analyses are adjusted for age, sex and calendar year: MI = myocardial infarction, LUT = lower urinary tract, n = number of cancers, N = number of persons. **b.** Incidence rate ratios of overall cancer and selected subtypes of cancer associated with a myocardial infarction. Analyses are adjusted for age, sex, calendar year, hypertension, dyslipidemia, diabetes, chronic obstructive pulmonary disease and socioeconomic status. MI = myocardial infarction, LUT = lower urinary tract, n = number of cancers, N = number of persons **c.** Incidence rate ratios of overall cancer and selected subtypes of cancer associated with a myocardial infarction 6 months – 17 years post-MI. Analyses are adjusted for age, sex, calendar year, hypertension, dyslipidemia, diabetes, chronic obstructive pulmonary disease and socioeconomic status. MI = myocardial infarction, LUT = lower urinary tract, n = number of cancers, N = number of persons

The strong associations between an MI and a new onset cancer in the first 6 months, especially the first month, even after adjustment for comorbidities compared to the remaining follow-up, indicate that our observations are likely explained by surveillance bias. Being in contact with the healthcare system increases the chance of early detection of cancer due to intensive clinical evaluation, a large number of tests and increased reporting of non-cardiac symptoms. Platelet inhibition may also induce bleeding in clinically silent cancers post MI, requiring further diagnostic testing. Another explanation to this association could be occult cancers during time of MI, as they provide a prothrombotic state [12] that may increase the risk of MI [13] and other arterial thrombotic diseases [29].

#### Radiation and new onset cancer after an MI

One could speculate that MI patients are more exposed to radiation through percutaneous coronary interventions and other procedures, which could affect our results. If so, we would have expected increasing risk of developing cancers in the chest, such as lung and breast cancer, in the years following MI. In this study, breast cancer showed a non-significantly increased risk of cancer only 10–17 years following MI. However, after the first year following an MI, a history of an MI was consistently associated with increased risk of lung and lower urinary tract cancers, suggesting that smoking may be the main explanation to this observation.

#### Strengths and limitations

The major strengths of this nationwide study include the diminished risk of selection bias, the minimal loss of follow-up ensured by the comprehensive Danish registries, and the large sample size of almost 3 million people with up to 17 years of follow-up, which gave us the unique possibility to study the risk of overall and subtypes of cancer in MI patients. Conversely, given the observational nature of this study, several important limitations need to be addressed.

The primary limitation was the risk of unmeasured and residual confounding by variables not available to us

from the administrative registries, namely smoking, alcohol consumption, body mass index, physical activity level, diet and metabolic abnormalities not requiring medication. Further studies are needed to discover the effect of these common risk factors on the risk of cancer in MI patients. Secondly, surveillance bias is likely to have affected our results, thus being in contact with the healthcare system increases the chance of diagnosing a cancer. Thirdly, our results rely on discharge diagnoses on cancer and MI from hospitals. Nonetheless, although minor misclassifications exist in the NPR, especially when the coding practice is unclear, the misclassifications are non-systematic and do not influence the overall validity of the NPR data [19, 30–32]. Both the MI and cancer diagnoses have high predictive values and a high sensitivity. Theoretically some cases of an MI or a cancer may have been overlooked which may have biased our results toward zero. However, we do not think that misclassification of MI or cancer explain our results since our results are in accordance with previous studies on the association between atherosclerosis and incident cancer [14]. Whether the observed cancers within the first year after the MI are early stage cancers without impact on e.g. length of life cannot be addressed based on the present analyses. However, reverse causality may be a limitation given the higher risk of cancer in the first year and co-occurrence as seen in Fig. 1. Additionally, cancer events were primarily identified from NPR with supplement from the Danish Register of Causes of Death. We did not have access to The Danish Cancer Registry or the Danish Pathology Registry, and thus our study may underestimate the number of cancer events. However, the number is considered low, since the Danish Pathology Registry forwards information to the Danish Register of Causes of Death. Further studies are needed to examine whether more advanced cancers are more or less associated with MI. Furthermore, the definitions of some of the comorbidities in our data rely on information poorly registered in the registries. To accommodate this, in accordance with previous work, prescribed medications were used as proxies to define diabetes mellitus, hypertension and dyslipidemia [20, 21]. Lastly, the majority of the Danish population is white, so our results are not generalizable to non-white people.



## Conclusions

This study suggests that the increased incidence of cancer among patients with myocardial infarction may be due mutual risk factors, occult cancers and increased surveillance rather than an independent association. Furthermore, death is still a larger clinical challenge at all ages, especially by cardiac death rather than cancer in the early years after the myocardial infarction. Cardiologists and general practitioners should be aware of signs and symptoms of cancer in myocardial infarction survivors, but focus on secondary prevention and management after MI to reduce mortality is warranted.

## Additional files

**Additional file 1: Figure S1A.** Incidence rates of cancer and death stratified by age group 0-1 years post-MI in the reference and MI population. **Figure S1B.** Incidence of cancer and death stratified by age group 1-5 years post-MI in the reference and MI population. **Figure S1C.** Incidence of cancer and death stratified by age group 5-17 years post-MI in the reference and MI population. **Figure S2.** Cumulative incidence of cancer stratified by age group in the MI population. **Figure S3.** Cumulative incidence of death stratified by age group in the MI population. (DOCX 407 kb)

**Additional file 2: Table S1.** One-year incidence rates of subtypes of cancer per 1,000 person-years according to age group. **Table S2A.** Incidence rate ratios of cancer associated with an MI adjusted for age, sex and calendar year according to time since MI. **Table S2B.** Incidence rate ratios of cancer associated with an MI adjusted for age, sex, calendar year, dyslipidemia, hypertension, diabetes, chronic obstructive pulmonary disease and socioeconomic status according to time since MI. **Table S3A.** Incidence rate ratios of overall cancer and selected subtypes of cancer stratified by age group and adjusted for sex and calendar year. **Table S3B.** Incidence rate ratios of overall cancer and selected subtypes of cancer stratified by age group and adjusted for sex, calendar year, dyslipidemia, hypertension, diabetes, chronic obstructive pulmonary disease and socioeconomic status. **Table S3C.** Incidence rate ratios of overall cancer and selected subtypes of cancer 6 months – 17 years post-MI stratified by age group and adjusted for sex, calendar year, dyslipidemia, hypertension, diabetes, chronic obstructive pulmonary disease and socioeconomic status. **Table S4.** Incidence rate ratios of overall cancer and selected subtypes of cancer stratified by gender. (DOCX 54 kb)

## Abbreviations

ATC: Anatomical Therapeutic Chemical; ICD: International Classification of Diseases; IR: Incidence rates; IRR: Incidence rate ratio; LUT: Lower urinary tract; MI: Myocardial infarction; NPR: (Danish) National Patient Registry

## Funding

The study was funded internally by the Department of Cardiology at Herlev and Gentofte Hospital in Copenhagen. Dr. Gislason is supported by unrestricted clinical research scholarship from the Novo Nordisk Foundation.

## Availability of data and materials

The data that support the findings of this study are available from Statistics Denmark, but restrictions apply to the availability of these data, which were used under license for the current study, and so are not publicly available. Data are however available from the authors upon reasonable request and with permission of Statistics Denmark.

## Authors' contributions

All authors made substantial contribution to conception and design. MM, CBC, MDS and MS undertook data analysis and interpretation. MM prepared the manuscript with contributions from all authors. All authors approved the final version.

## Ethics approval and consent to participate

Retrospective register studies do not need ethical approval in Denmark. The Danish Data Protection Agency has approved the project (reference number 2007–58-015/GEH 2014–014, I-Suite no: 02732).

## Consent for publication

Not applicable.

## Competing interests

The authors declare that they have no competing interests.

## Publisher's Note

Springer Nature remains neutral with regard to jurisdictional claims in published maps and institutional affiliations.

## Author details

<sup>1</sup>Department of Cardiology, Herlev and Gentofte Hospital, Hjertemedicinsk forskning 1, Kildegårdsvej 28, opg. 8, 3.sal tv, DK-2900 Hellerup, Denmark. <sup>2</sup>Aalborg University Hospital, Aalborg, Denmark. <sup>3</sup>Institute of Health Science and Technology, Aalborg University, Aalborg, Denmark. <sup>4</sup>Danish Heart Foundation, Copenhagen, Denmark.

Received: 10 January 2018 Accepted: 8 October 2018

Published online: 22 October 2018

## References

- Nichols M, Townsend N, Scarborough P, Rayner M. Cardiovascular disease in Europe 2014: epidemiological update. *Eur Heart J.* 2014;35(42):2950–9.
- Townsend N, Wilson L, Bhatnagar P, Wickramasinghe K, Rayner M, Nichols M. Cardiovascular disease in Europe: epidemiological update 2016. *Eur Heart J.* 2016;37(42):3232–45.
- Setoguchi S, Glynn RJ, Avorn J, Mittleman MA, Levin R, Winkelmayr WC. Improvements in long-term mortality after myocardial infarction and increased use of cardiovascular drugs after discharge: a 10-year trend analysis. *J Am Coll Cardiol.* 2008;51(13):1247–54.
- Orozco-Beltran D, Cooper RS, Gil-Guillen V, Bertomeu-Martinez V, Pita-Fernandez S, Durazo-Arvizu R, et al. Trends in mortality from myocardial infarction. A comparative study between Spain and the United States: 1990-2006. *Rev Esp Cardiol Engl Ed.* 2012;65(12):1079–85.
- Spoon DB, Psaltis PJ, Singh M, Holmes DR, Gersh BJ, Rihal CS, et al. Trends in cause of death after percutaneous coronary intervention. *Circulation.* 2014;129(12):1286–94.
- Pedersen F, Butrymovich V, Kelbæk H, Wachtell K, Helqvist S, Kastrup J, et al. Short- and long-term cause of death in patients treated with primary PCI for STEMI. *J Am Coll Cardiol.* 2014;64(20):2101–8.
- Hasin T, Gerber Y, McNallan SM, Weston SA, Kushwaha SS, Nelson TJ, et al. Patients with heart failure have an increased risk of incident cancer. *J Am Coll Cardiol.* 2013;62(10):881–6.
- Witztum JL. The oxidation hypothesis of atherosclerosis. *Lancet.* 1994; 344(8925):793–5.
- Hansen ES. International Commission for Protection Against Environmental Mutagens and Carcinogens. ICPEMC Working Paper 7/1/2. Shared risk factors for cancer and atherosclerosis—a review of the epidemiological evidence. *Mutat Res.* 1990;239(3):163–79.
- WHO | Noncommunicable diseases [Internet]. WHO. [cited 2015 Jan 3]. Available from: <http://www.who.int/mediacentre/factsheets/fs355/en/>
- Koene RJ, Prizment AE, Blaes A, Konety SH. Shared risk factors in cardiovascular disease and Cancer. *Circulation.* 2016;133(11):1104–14.
- Lip GYH, Chin BSP, Blann AD. Cancer and the prothrombotic state. *Lancet Oncol.* 2002;3(1):27–34.
- Naschitz JE, Yeshurun D, Abrahamson J. Arterial occlusive disease in occult cancer. *Am Heart J.* 1992;124(3):738–45.
- Dreyer L, Olsen JH. Cancer risk of patients discharged with acute myocardial infarct. *Epidemiol Camb Mass.* 1998;9(2):178–83.
- Pehrsson SK, Linnarsjö A, Hammar N. Cancer risk of patients with ischaemic syndromes. *J Intern Med.* 2005;258(2):124–32.
- Rinde LB, Småbrekke B, Hald EM, Brodin EE, Njølstad I, Mathiesen EB, et al. Myocardial infarction and future risk of cancer in the general population—the Tromsø study. *Eur J Epidemiol.* 2017;32(3):193–201.
- Madsen M, Davidsen M, Rasmussen S, Abildstrom SZ, Osler M. The validity of the diagnosis of acute myocardial infarction in routine statistics: a

- comparison of mortality and hospital discharge data with the Danish MONICA registry. *J Clin Epidemiol*. 2003;56(2):124–30.
18. Thygesen SK, Christiansen CF, Christensen S, Lash TL, Sørensen HT. The predictive value of ICD-10 diagnostic coding used to assess Charlson comorbidity index conditions in the population-based Danish National Registry of patients. *BMC Med Res Methodol*. 2011;11:83.
  19. Larsen MB, Jensen H, Hansen RP, Olesen F, Vedsted P. Identification of patients with incident cancers using administrative registry data. *Dan Med J*. 2014;61(2):A4777.
  20. Olesen JB, Lip GYH, Hansen ML, Hansen PR, Tolstrup JS, Lindhardsen J, et al. Validation of risk stratification schemes for predicting stroke and thromboembolism in patients with atrial fibrillation: nationwide cohort study. *BMJ*. 2011;342:d124.
  21. Schramm TK, Gislason GH, Køber L, Rasmussen S, Rasmussen JN, Abildstrøm SZ, et al. Diabetes patients requiring glucose-lowering therapy and nondiabetics with a prior myocardial infarction carry the same cardiovascular risk: a population study of 3.3 million people. *Circulation*. 2008;117(15):1945–54.
  22. Andersson C, Vaag A, Selmer C, Schmiegelow M, Sørensen R, Lindhardsen J, et al. Risk of cancer in patients using glucose-lowering agents: a nationwide cohort study of 3.6 million people. *BMJ Open*. 2012;2(3):e000433.
  23. Index of /Lexis [Internet]. [cited 2017 Sep 28]. Available from: <http://www.bendixcarstensen.com/Lexis/>
  24. Berger SM, Gislason G, Moore LL, Andersson C, Torp-Pedersen C, Denis GV, et al. Associations between metabolic disorders and risk of cancer in Danish men and women - a nationwide cohort study. *BMC Cancer*. 2016;16(1):133.
  25. Eyre H, Kahn R, Robertson RM. Preventing Cancer, cardiovascular disease, and diabetes a common agenda for the American Cancer Society, the American Diabetes Association, and the American Heart Association. *Diabetes Care*. 2004;27(7):1812–24.
  26. Coussens LM, Werb Z. Inflammation and cancer. *Nature*. 2002;420(6917):860–7.
  27. Libby P. Inflammation and cardiovascular disease mechanisms. *Am J Clin Nutr*. 2006;83(2):456S–60S.
  28. Hasin T, Gerber Y, Weston SA, Jiang R, Killian JM, Manemann SM, et al. Heart failure after myocardial infarction is associated with increased risk of Cancer. *J Am Coll Cardiol*. 2016;68(3):265–71.
  29. Blann AD, Dunmore S. Arterial and Venous Thrombosis in Cancer Patients. *Cardiol Res Pract* [Internet]. 2011 Mar 3; 2011. Available from: <https://www.ncbi.nlm.nih.gov/pmc/articles/PMC3051163/>
  30. Lynge E, Sandegaard JL, Rebolj M. The Danish National Patient Register. *Scand J Public Health*. 2011;39(7 Suppl):30–3.
  31. Helqvist L, Erichsen R, Gammelager H, Johansen MB, Sørensen HT. Quality of ICD-10 colorectal cancer diagnosis codes in the Danish National Registry of patients. *Eur J Cancer Care (Engl)*. 2012;21(6):722–7.
  32. Gammelager H, Christiansen CF, Johansen MB, Borre M, Schoonen M, Sørensen HT. Quality of urological cancer diagnoses in the Danish National Registry of patients. *Eur J Cancer Prev Off J Eur Cancer Prev Organ ECP*. 2012;21(6):545–51.

**Ready to submit your research? Choose BMC and benefit from:**

- fast, convenient online submission
- thorough peer review by experienced researchers in your field
- rapid publication on acceptance
- support for research data, including large and complex data types
- gold Open Access which fosters wider collaboration and increased citations
- maximum visibility for your research: over 100M website views per year

**At BMC, research is always in progress.**

Learn more [biomedcentral.com/submissions](https://biomedcentral.com/submissions)

