



Aalborg Universitet

AALBORG UNIVERSITY
DENMARK

Phase III Trial of PROSTVAC in Asymptomatic or Minimally Symptomatic Metastatic Castration-Resistant Prostate Cancer

Gulley, James L; Borre, Michael; Vogelzang, Nicholas J; Ng, Siobhan; Agarwal, Neeraj; Parker, Chris C; Pook, David W; Rathenborg, Per; Flaig, Thomas W; Carles, Joan; Saad, Fred; Shore, Neal D; Chen, Liddy; Heery, Christopher R; Gerritsen, Winald R; Priou, Frank; Langkilde, Niels C; Novikov, Andrey; Kantoff, Philip W

Published in:

Journal of clinical oncology : official journal of the American Society of Clinical Oncology

DOI (link to publication from Publisher):

[10.1200/JCO.18.02031](https://doi.org/10.1200/JCO.18.02031)

Creative Commons License
CC BY 4.0

Publication date:
2019

Document Version
Publisher's PDF, also known as Version of record

[Link to publication from Aalborg University](#)

Citation for published version (APA):

Gulley, J. L., Borre, M., Vogelzang, N. J., Ng, S., Agarwal, N., Parker, C. C., Pook, D. W., Rathenborg, P., Flaig, T. W., Carles, J., Saad, F., Shore, N. D., Chen, L., Heery, C. R., Gerritsen, W. R., Priou, F., Langkilde, N. C., Novikov, A., & Kantoff, P. W. (2019). Phase III Trial of PROSTVAC in Asymptomatic or Minimally Symptomatic Metastatic Castration-Resistant Prostate Cancer. *Journal of clinical oncology : official journal of the American Society of Clinical Oncology*, 37(13), 1051-1061. Article JCO1802031. <https://doi.org/10.1200/JCO.18.02031>

General rights

Copyright and moral rights for the publications made accessible in the public portal are retained by the authors and/or other copyright owners and it is a condition of accessing publications that users recognise and abide by the legal requirements associated with these rights.

- Users may download and print one copy of any publication from the public portal for the purpose of private study or research.
- You may not further distribute the material or use it for any profit-making activity or commercial gain
- You may freely distribute the URL identifying the publication in the public portal -

Phase III Trial of PROSTVAC in Asymptomatic or Minimally Symptomatic Metastatic Castration-Resistant Prostate Cancer

James L. Gulley, MD, PhD¹; Michael Borre, PhD, DMSc²; Nicholas J. Vogelzang, MD³; Siobhan Ng, MD⁴; Neeraj Agarwal, MD⁵; Chris C. Parker, MD⁶; David W. Pook, MD, MBBS⁷; Per Rathenborg, MD⁸; Thomas W. Flaig, MD⁹; Joan Carles, MD, PhD¹⁰; Fred Saad, MD¹¹; Neal D. Shore, MD¹²; Liddy Chen, PhD¹³; Christopher R. Heery, MD¹³; Winald R. Gerritsen, MD, PhD¹⁴; Frank Priou, MD¹⁵; Niels C. Langkilde, DMSc¹⁶; Andrey Novikov, MD¹⁷; and Philip W. Kantoff, MD¹⁸

abstract

PURPOSE PROSTVAC, a viral vector–based immunotherapy, prolonged median overall survival (OS) by 8.5 months versus placebo in metastatic castration-resistant prostate cancer in a phase II study. This phase III study further investigated those findings.

PATIENTS AND METHODS Patients were randomly assigned to PROSTVAC (Arm V; n = 432), PROSTVAC plus granulocyte-macrophage colony-stimulating factor (Arm VG; n = 432), or placebo (Arm P; n = 433), stratified by prostate-specific antigen (less than 50 ng/mL v 50 ng/mL or more) and lactate dehydrogenase (less than 200 v 200 U/L or more). Primary end point was OS. Secondary end points were patients alive without events (AWE)—namely, radiographic progression, pain progression, chemotherapy initiation, or death—at 6 months and safety. The study design was a superiority trial of PROSTVAC (Arm V or Arm VG) versus Arm P. Three interim analyses were planned.

RESULTS At the third interim analysis, criteria for futility were met and the trial was stopped early. Neither active treatment had an effect on median OS (Arm V, 34.4 months; hazard ratio, 1.01; 95% CI, 0.84 to 1.20; *P* = .47; Arm VG, 33.2 months; hazard ratio, 1.02; 95% CI, 0.86 to 1.22; *P* = .59; Arm P, 34.3 months). Likewise, AWE at 6 months was similar (Arm V, 29.4%; odds ratio, 0.96; 95% CI, 0.71 to 1.29; Arm VG, 28.0%; odds ratio, 0.89; 95% CI, 0.66 to 1.20; placebo, 30.3%). Adverse events were similar for the treatment and placebo groups, with the most common being injection site reactions (62% to 72%) and fatigue (21% to 24%). Arrhythmias were the most common cardiac-related events (1.4% to 3.5%). There were no reports of either myocarditis or pericarditis. Serious treatment-related events occurred in less than 1% of all patients.

CONCLUSION Whereas PROSTVAC was safe and well tolerated, it had no effect on OS or AWE in metastatic castration-resistant prostate cancer. Combination therapy is currently being explored in clinical trials.

J Clin Oncol 37:1051-1061. © 2019 by American Society of Clinical Oncology

Licensed under the Creative Commons Attribution 4.0 License 

INTRODUCTION

The treatment algorithm for metastatic castration-resistant prostate cancer (mCRPC) continues to evolve as research brings new survival-prolonging therapies to the clinic. The mainstay of treatment for mCRPC is androgen-deprivation therapy through pharmacologic and surgical strategies.^{1,2} During the last decade, second-generation antiandrogen agents—abiraterone and enzalutamide—have received US Food and Drug Administration approval for mCRPC.³⁻⁶ Other treatment modalities for mCRPC that have demonstrated overall survival (OS) benefits include chemotherapy (docetaxel and cabazitaxel),⁷⁻⁹ immunotherapy (sipuleucel-T),¹⁰ and targeted α -therapy (radium-223).¹¹

PROSTVAC is an active immunotherapy vaccine that contains prostate-specific antigen (PSA) as the tumor-associated antigen used to generate a T-cell response against prostate cancer. PROSTVAC is composed of a heterologous prime-boost regimen using two different live poxviral-based vectors: PROSTVAC-V, a recombinant vaccinia virus (rilimogene galvacirepvec), and PROSTVAC-F, a recombinant fowlpox virus (rilimogene glafolivec). Both vectors contain transgenes for human PSA and three costimulatory molecules for T cells—collectively referred to as TRICOM: B7.1, leukocyte function-associated antigen-3, and intercellular adhesion molecule-1—to enhance immune activation.¹² On the basis of the hypothesis of potential enhancement of

ASSOCIATED CONTENT

Data Supplements

Author affiliations and support information (if applicable) appear at the end of this article.

Accepted on February 1, 2019 and published at jco.org on February 28, 2019; DOI <https://doi.org/10.1200/JCO.18.02031>

Processed as a Rapid Communication manuscript.

The views expressed are those of the authors and not necessarily those of the National Health Service, the National Institute for Health Research, or the Department of Health.

Clinical trial information: NCT01322490.

T-cell responses, PROSTVAC has been evaluated in clinical trials in combination with granulocyte-macrophage colony-stimulating factor (GM-CSF),^{13,14} a cytokine with immunomodulatory activity¹⁵; however, the necessity of GM-CSF was not established definitively in these earlier studies.

Results from a randomized, double-blind, phase II trial generated the hypothesis that PROSTVAC might prolong OS, although it did not prolong progression-free survival, the study's primary end point, or produce any objective tumor responses.^{14,16} To validate this hypothesis and confirm the role of GM-CSF as an adjuvant, we designed a phase III trial, the results of which are reported here.

PATIENTS AND METHODS

Patients

Eligibility criteria included men age 18 years or older with documented asymptomatic or minimally symptomatic evidence of mCRPC and documented progressive disease (either radiologic or by PSA progression), castrate testosterone level less than 50 ng/dL, current use of a gonadotropin-releasing hormone agonist or antagonist (unless surgically castrated), and chemotherapy naïve for metastatic prostate cancer (neoadjuvant or adjuvant chemotherapy for primary prostate cancer was permitted if completed more than 3 years before screening). A 6-week washout period was required for patients on antiandrogen therapy—4 weeks if on flutamide. Concomitant medications to prevent bone loss or skeletal-related events, including bisphosphonates and denosumab, as well as palliative radiotherapy were permitted during the trial.

Exclusion criteria included cancer-related pain that required scheduled opioid narcotics—as needed two times per week or fewer was permitted—and current or prior use of sipuleucel-T for prostate cancer.

Study Design

This was a phase III, international, multicenter, randomized, double-blind, placebo-controlled study. Patients were stratified by PSA (less than 50 ng/mL v 50 ng/mL or more) and lactate dehydrogenase (less than 200 U/L v 200 U/L or more) at screening and block randomly assigned 1:1:1 to PROSTVAC plus GM-CSF (Arm VG), PROSTVAC plus placebo GM-CSF (Arm V), or vaccine placebo plus placebo GM-CSF (Arm P) using an interactive voice response system from a randomization list generated by a third-party vendor. GM-CSF (sargramostim; Leukine [Sanofi, Bridgewater, NJ]; 250 µg, lyophilized), a glycosylated, recombinant human GM-CSF, was manufactured by Genzyme. GM-CSF placebo was USP grade or equivalent bacteriostatic sodium chloride (saline) for injection. GM-CSF was added as adjuvant therapy to one treatment arm to explore whether this immune modulator enhanced the activity of PROSTVAC, as data on its potential benefit in cancer therapy are inconsistent.^{13,17-19} An empty vector fowlpox was used for the placebo vaccination as it is nonreplicating

in humans; has minimal safety risks, including no known effects on cancer progression; and an adverse effect profile, including injection site reactions, that is overlapping and generally indistinguishable from subcutaneously administered vaccinia. This trial is registered with the European Clinical Trial Database (EudraCT 2010-021196-85).

The study consisted of three periods: screening, treatment, and long-term follow-up (LTFU). During the treatment phase, a total of seven vaccinations were subcutaneously administered—a single priming immunization of PROSTVAC-V or placebo in week 1 followed by six boosting immunizations with PROSTVAC-F or placebo administered in weeks 3, 5, 9, 13, 17, and 21. Subcutaneous GM-CSF or placebo was administered—within 5 mm of the original injection site—on the day of immunization and for 3 consecutive days thereafter beginning with week 1, for a total of 28 doses. After the end-of-treatment visit—week 25/early termination—all patients were automatically entered into the LTFU phase, with study visits occurring every 6 months. During the treatment phase (approximately 5 months), chemotherapy, immunotherapy (eg, sipuleucel-T) or immunosuppressive therapy (eg, etanercept or natalizumab), systemic corticosteroids (daily or continued use every other day for more than 14 days), anticancer radionuclides, and secondary anticancer hormonal treatments (eg, abiraterone) were prohibited. During LTFU, patients received standard-of-care treatment as determined by the investigator.

The study was approved by local or central institutional review boards or ethics committees for each participating site and conducted according to the provisions of the Declaration of Helsinki and Good Clinical Practice Guidelines of the International Conference on Harmonization. All patients provided written informed consent before any screening procedures were initiated.

Outcomes

Primary end point of the study was OS, defined as the time between the date of random assignment and the date of death as a result of any cause. Secondary end point was the proportion of patients alive without events (AWE)—namely, radiographic progression, pain progression, initiation of chemotherapy for prostate cancer, or death—at 6 months post-random assignment. Safety end points included adverse events, vital signs, and 12-lead ECG. Adverse events were graded according to the National Cancer Institute Common Terminology Criteria for Adverse Events (version 4.0). Tumor response was according to Response Evaluation Criteria in Solid Tumors (RECIST) criteria 1.1. Exploratory/other end points included survival on the basis of HLA-A2 status, postvaccination cancer treatments (abiraterone acetate, enzalutamide, or sipuleucel-T), and growth rate constant calculated using PSA values from screening through week 25/end-of-treatment visit.

Statistical Analysis

All efficacy analyses were conducted using the intention-to-treat population, defined as all randomly assigned patients, with analysis according to the randomized treatment arm. Safety analyses were conducted using the full analysis set population, defined as all patients who initiated treatment. Primary analysis was based on a stratified log-rank test. Hazard ratio was estimated using stratified Cox proportional hazards regression analysis, with ties handled by the exact method. Survival data were plotted using the Kaplan-Meier method. An estimated 534 deaths in a between-arm comparison was needed to achieve a target hazard ratio of 0.68 with a one-sided type I error of 0.0125 and a target power of 85% or greater. The number of patients per arm was set at 400 for an approximate total of 1,200 patients.

Two main overall comparisons of the primary end point were planned—one between Arm V and Arm P and the other between Arm VG and Arm P—and these were performed using a Bonferroni correction for the overall type I error probability such that the probability for each one-sided comparison would not exceed 0.0125 (0.025/2). Trial success was defined as meeting the statistical criterion for either comparison. The same comparisons performed for survival were performed for AWE using the same significance levels. AWE end point was analyzed using a logistic regression model stratified by randomization strata. The 95% CI for the odds ratio (OR) estimate was computed as the measure of effect size.

Three interim analyses were planned for OS superiority and futility after 321, 481, and 641 deaths, which represented 40%, 60%, and 80% of the deaths required for final analysis (801 deaths in the three arms). In addition to the O'Brien-Fleming efficacy stopping boundaries to control the overall type I error, a significance level of 0.00001 was used for detection of futility at each interim analysis. An unblinded independent third-party vendor performed interim analyses. Results were assessed by an independent data monitoring committee. SAS (SAS/STAT User's Guide, Version 9.2; SAS Institute, Cary, NC) was used for all statistical analyses.

RESULTS

Patient Characteristics and Disposition

A total of 1,749 patients from 105 sites in 16 countries were screened, and 1,297 were randomly assigned to one of the three treatment arms, comprising the intention-to-treat population. Of these, 11 patients were never treated; therefore, the full analysis set/safety population consisted of 1,286 patients. The first patient was screened in November 2011 and the last patient completed the treatment phase in July 2015. After the third interim analysis, criteria for futility were met and, on the recommendation of the DMC, the trial was stopped early (September 25, 2017) and

the date of last follow-up was October 02, 2017. A flowchart of patient enrollment and disposition is shown in [Figure 1](#). A similar proportion of treated patients in all arms (65% to 70%) completed the treatment period. Reasons for discontinuation were also similar among the study arms, with progressive disease (23.4%; 301 of 1,286 patients) being the most common, whereas adverse events accounted for 3.5% (45 of 1,286 patients) of all treatment discontinuations.

The majority of treated patients in each arm (94% to 96%) entered the LTFU phase ([Fig 1](#)). As follow-up was to continue until death as a result of any cause, death was the most common reason for discontinuation from LTFU. Given the DMC recommendation to stop the trial early, the second most common reason was study termination by sponsor.

Patients were evenly distributed across the treatment arms by demographic and disease characteristics ([Table 1](#)). Mean age of the study population was 71 years (range, 45 to 93 years), and the primary site of metastasis in all study arms was bone, occurring in approximately 75% of patients. Approximately one third of all patients reported a history of cardiac disorders, with coronary artery disorders being the most common at approximately 20%.

Primary End Point

As shown in the Kaplan-Meier curves ([Fig 2](#)), the two active arms were not different from placebo with respect to OS. Median OS was 34.4 months in Arm V, 33.2 months in Arm VG, and 34.3 months in Arm P. The hazard ratio for comparison with placebo was 1.01 (95% CI, 0.84 to 1.20; $P = .47$) for Arm V and 1.02 (95% CI, 0.86 to 1.22; $P = .59$) for Arm VG.

Secondary End Point

Likewise, the proportion of patients AWE at 6 months post-randomization was similar across treatment arms (Arm V; 29.4%; OR, 0.96; 95% CI, 0.71 to 1.29; Arm VG; 28.0%; OR, 0.89; 95% CI, 0.66 to 1.20; Arm P; 30.3%; [Table 2](#)). The most common event was radiographic progression, which occurred in approximately 60% of patients, followed by pain progression, which ranged from 6.5% in Arm V to 10.4% in Arm P.

Exploratory/Other End Points

HLA-A2 status—positive versus negative—did not influence OS ([Table 3](#)). Whereas there were significant differences in OS between postvaccination cancer therapy—yes versus no—and between tumor growth rate quartiles, there were no differences between treatments within each subgroup ([Table 3](#), Data Supplement Figures A2, A3).

Tumor response results were similar across treatments ([Table 4](#), Data Supplement Figure A1). At week 25/end of treatment, only one patient achieved a complete response and this was observed in a placebo-treated patient. A best

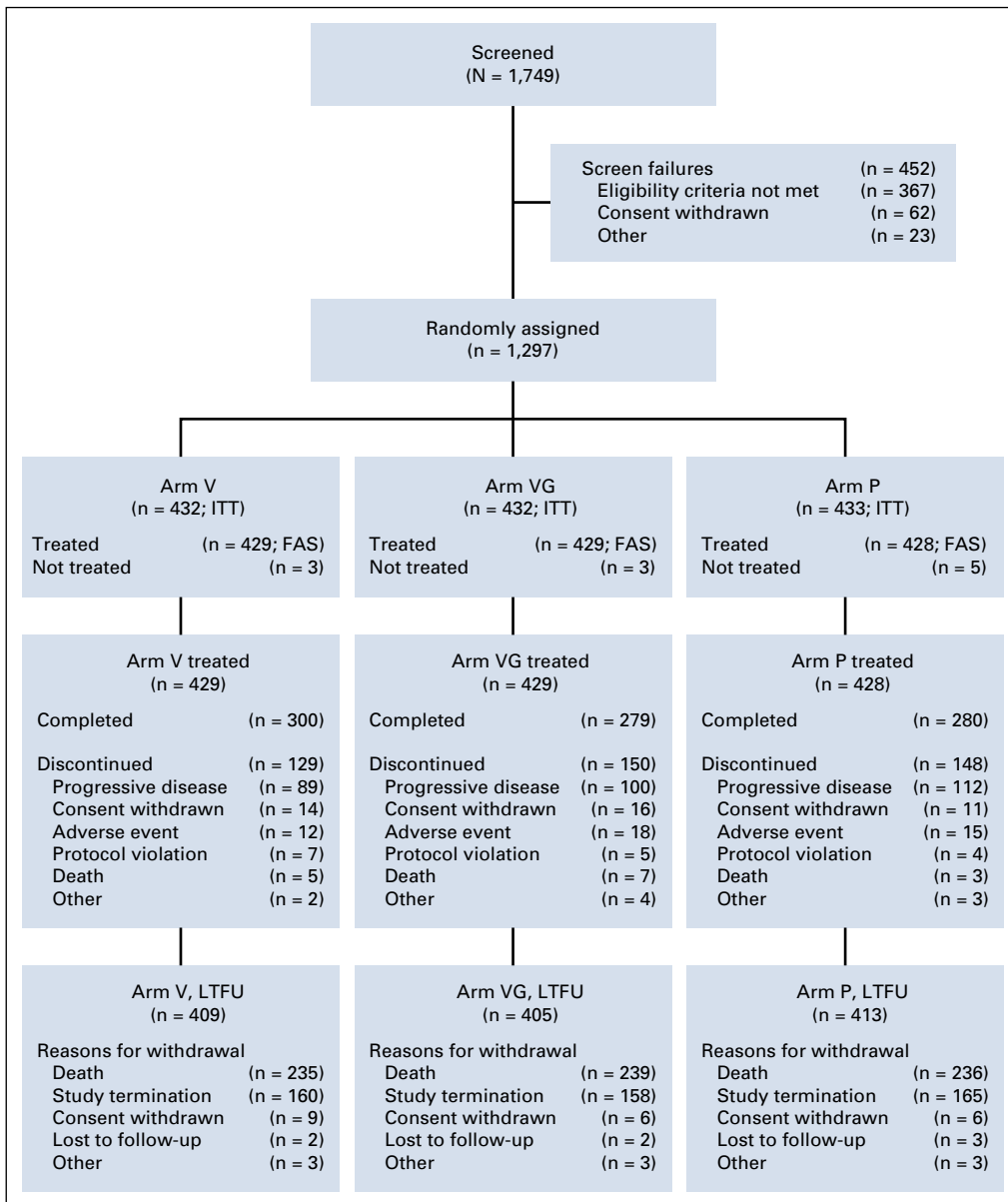


FIG 1. Patient disposition. Safety was assessed using the full analysis set population (FAS). Arm P, placebo; Arm V, PROSTVAC; Arm VG, PROSTVAC + granulocyte-macrophage colony-stimulating factor; ITT, intention-to-treat population, LTFU, long-term follow-up.

response of partial response was observed in less than 1% of patients in each study arm.

Safety

Nearly all treated patients—approximately 91%—experienced at least one treatment-emergent adverse event (TEAE). As expected, the most common events in all three treatment arms were injection site reactions, which occurred in 62% to 72% of patients. The most common noninjection site event for all treatment arms was fatigue, which occurred in 21% to 24% of patients. Whereas at least one grade 3 or greater TEAE was reported in 21% to 23% of patients, the majority (more than 75%) of all TEAEs were mild in severity (grade 1). Adverse events that led to treatment discontinuation occurred in 4.9% (21 of 429 patients), 6.5% (28 of 429 patients), and 5.8% (25 of 428 patients) of patients

in Arm V, Arm VG, and Arm P, respectively. In only a minority of patients were the events considered treatment related (Arm V: 0.9% [four of 429 patients]; Arm VG: 3.0% [13 of 429 patients]; Arm P: 1.6% [seven of 428 patients]). The most common TEAEs that led to treatment discontinuation in the study arms were bone pain (n = 6; two patients in each treatment arm) and spinal cord compression (n = 6; one patient in each PROSTVAC arm and four patients in the placebo arm). A total of nine patients (Arm V, n = 3; Arm VG, n = 4; Arm P, n = 2) experienced 10 serious adverse events that were considered by study investigators to be treatment related, but no single event occurred in more than one patient each per study arm. The most common treatment-related TEAEs by toxicity grade are shown in Table 5. Overall, treatment-related adverse events were more commonly observed in Arm VG (79.3%)

TABLE 1. Baseline Demographics and Disease Characteristics

Characteristic	Arm V (n = 432)	Arm VG (n = 432)	Arm P (n = 433)
Mean age, years (SD)	71.3 (8.0)	70.6 (8.4)	71.4 (8.3)
Race, No. (%)			
White	404 (93.5)	400 (92.6)	403 (93.1)
African American	17 (3.9)	25 (5.8)	23 (5.3)
Asian	7 (1.6)	6 (1.4)	7 (1.6)
Other or missing	4 (0.9)	1 (0.2)	0
Not Hispanic or Latino, No. (%)	418 (96.8)	421 (97.5)	415 (95.8)
Geographic region, No. (%)			
North America	156 (36.1)	155 (35.9)	157 (36.3)
Eastern Europe	63 (14.6)	68 (15.7)	72 (16.6)
Rest of the world	213 (49.3)	209 (48.4)	204 (47.1)
Mean BMI, kg/m ² (SD)	28.5 (4.4)	28.7 (4.8)	28.4 (4.6)
ECOG performance status, No. (%)			
0	310 (71.8)	322 (74.5)	330 (76.2)
1	120 (27.8)	107 (24.8)	103 (23.8)
2	1 (0.2)	2 (0.5)	0
Missing	1 (0.2)	1 (0.2)	0
HLA-A2 Status, No. (%)			
Positive	200 (46.3)	192 (44.4)	183 (42.3)
Negative	190 (44.0)	185 (42.8)	203 (46.9)
Missing	42 (9.7)	55 (12.7)	47 (10.9)
Mean PSA, ng/mL (SD)	71.4 (167.4)	69.4 (192.1)	82.6 (257.8)
Randomization strata, No. (%)			
PSA < 50 ng/mL and LDH < 200 U/L	168 (38.9)	168 (38.9)	168 (38.8)
PSA < 50 ng/mL and LDH ≥ 200 U/L	135 (31.3)	135 (31.3)	135 (31.2)
PSA ≥ 50 ng/mL and LDH < 200 U/L	65 (15.0)	64 (14.8)	64 (14.8)
PSA ≥ 50 ng/mL and LDH ≥ 200 U/L	64 (14.8)	65 (15.0)	66 (15.2)
Mean hemoglobin, g/L (SD)	130.8 (12.2)	130.5 (12.8)	131.7 (13.7)
Mean ALP, U/L (SD)	94.8 (45.9)	99.9 (49.4)	99.7 (51.8)
Mean years since initial diagnosis (SD)	6.6 (4.7)	6.3 (5.4)	6.0 (5.2)
Primary site of metastasis, No. (%)			
Bone	320 (74.1)	323 (74.8)	326 (75.3)
Lymph nodes	62 (14.4)	72 (16.7)	69 (15.9)
Visceral	41 (9.5)	32 (7.4)	36 (8.3)
No metastasis	2 (0.5)	1 (0.2)	0
Baseline pain			
Yes	137 (31.7)	142 (32.9)	138 (31.9)
No	228 (52.8)	227 (52.5)	224 (51.7)
Missing	67 (15.5)	63 (14.6)	71 (16.4)

Abbreviations: ALP, alkaline phosphatase; Arm P, placebo; Arm V, PROSTVAC; Arm VG, PROSTVAC + granulocyte-macrophage colony-stimulating factor; BMI, body mass index; ECOG, Eastern Cooperative Oncology Group; LDH, lactate dehydrogenase; PSA, prostate-specific antigen; SD, standard deviation.

compared with Arm V (72.7%) or placebo (70.6%), and this was especially noticeable with pyrexia (19.3%, 6.5%, and 11.0%, respectively) and injection site reactions. Cardiac disorders occurred in less than 5% of all treated patients,

with no differences across treatment arms. Arrhythmias were the most commonly reported cardiac-related TEAEs, occurring in 1.4% (Arm VG) to 3.5% (placebo) of all patients. There were no reports of myocarditis or pericarditis.

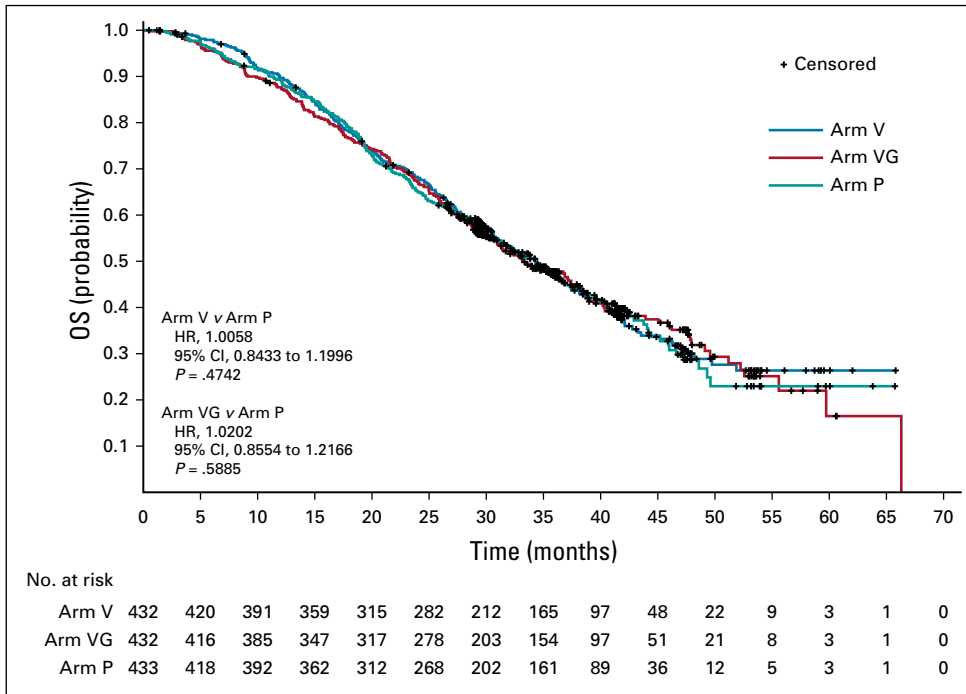


FIG 2. Kaplan-Meier estimates for overall survival (OS). Arm P, placebo; Arm V, PROSTVAC; Arm VG, PROSTVAC + granulocyte-macrophage colony-stimulating factor; HR, hazard ratio.

DISCUSSION

In this phase III study, PROSTVAC did not meet the primary OS end point compared with control in patients with asymptomatic or minimally symptomatic mCRPC. These results did not support the positive signal from the randomized phase II study.¹⁴

A few possibilities may account for these findings: the phase II finding generated a false-positive signal as a result of being underpowered for an OS comparison, the relatively small sample size (82 PROSTVAC-treated v 40 placebo-treated patients), and/or potential observer bias (long-term OS data were collected after database lock and study unblinding).^{14,16} Moreover, an imbalance in prognostic factors, both known and unknown, may have negatively affected the observed median OS in the phase II control arm (16.6 months). This was lower than expected

compared with the Halabi prognostic nomogram-predicted OS (PSA, lactate dehydrogenase, alkaline phosphatase, and hemoglobin; 20.4 months).^{14,20} Survival in the control arm relative to expected outcomes may be the origin of the flawed comparison, which is supported by the OS in the control arm of the sipuleucel-T pivotal trial (21.7 months).¹⁰ Finally, docetaxel was the only life-prolonging treatment available during our phase II study. From the time the phase III protocol was finalized (2010) until the last patient was randomly assigned (January 2015), multiple treatments became available—cabazitaxel,⁹ sipuleucel-T,¹⁰ abiraterone acetate^{3,4} enzalutamide,^{5,6} and radium-223¹¹—and we observed an approximate 3-year median OS in the placebo group. It should be noted that in similar predocetaxel patient populations, OS benefit in clearly clinically active agents—abiraterone and enzalutamide—

TABLE 2. Patients at 6 Months Postrandomization

Variable	Arm V (n = 432)	Arm VG (n = 432)	Arm P (n = 433)
AWE at 6 Months, No. (%)	127 (29.4)	121 (28.0)	131 (30.3)
Difference, % (95% CI)	−0.9 (−7.0 to 5.2)	−2.2 (−8.3 to 3.8)	
Odds ratio (95% CI)	0.96 (0.71 to 1.29)	0.89 (0.66 to 1.20)	
Event at 6 months, No. (%)	305 (70.6)	311 (72.0)	302 (69.7)
Radiographic progression	273 (63.2)	265 (61.3)	258 (59.6)
Pain progression	28 (6.5)	40 (9.3)	45 (10.4)
Initiation of chemotherapy	13 (3.0)	11 (2.5)	15 (3.5)
Death	9 (2.1)	19 (4.4)	17 (3.9)
Missing assessment	18 (4.2)	24 (5.6)	22 (5.1)

Abbreviations: Arm P, placebo; Arm V, PROSTVAC; Arm VG, PROSTVAC + granulocyte-macrophage colony-stimulating factor; AWE, alive without event.

TABLE 3. Median Overall Survival by Selected Subgroups

Variable	Arm V (n = 432)	Arm VG (n = 432)	Arm P (n = 433)
HLA-A2 status			
HLA-A2 positive	200	192	183
Median OS (95% CI)	34.5 (29.4 to 41.4)	31.5 (28.0 to 38.3)	34.5 (29.0 to 39.6)
Hazard ratio (95% CI)	0.92 (0.71 to 1.20)	1.03 (0.79 to 1.35)	
HLA-A2 negative	190	185	203
Median OS (95% CI)	33.9 (30.5 to 37.3)	37.2 (30.9 to 40.4)	35.5 (31.3 to 40.3)
Hazard ratio (95% CI)	1.19 (0.92 to 1.55)	1.00 (0.77 to 1.31)	
Postvaccination cancer therapy			
Postvaccination therapy, yes*	301	285	274
Median OS (95% CI)	37.4 (34.5 to 41.2)	38.5 (34.1 to 41.7)	37.9 (34.7 to 42.9)
Hazard ratio (95% CI)	1.06 (0.84 to 1.32)	1.09 (0.87 to 1.37)	
Postvaccination therapy, no*	131	147	159
Median OS (95% CI)	20.3 (16.6 to 25.1)	23.7 (21.5 to 26.5)	23.0 (19.1 to 27.7)
Hazard ratio (95% CI)	1.10 (0.82 to 1.47)	0.95 (0.72 to 1.25)	
6-Month tumor growth rate quartile†			
First quartile	88	91	84
Median OS (95% CI)	NA (38.2 to NA)	46.2 (38.5 to NA)	44.4 (41.3 to NA)
Hazard ratio (95% CI)	0.96 (0.59 to 1.55)	1.12 (0.70 to 1.78)	
Second quartile	96	78	89
Median OS (95% CI)	36.2 (30.7 to 45.2)	49.1 (33.5 to NA)	49.6 (35.5 to NA)
Hazard ratio (95% CI)	1.26 (0.82 to 1.94)	1.03 (0.64 to 1.66)	
Third quartile	92	90	81
Median OS (95% CI)	30.7 (24.9 to 35.6)	31.3 (28.3 to 34.7)	29.2 (24.9 to 35.6)
Hazard ratio (95% CI)	1.05 (0.72 to 1.51)	0.94 (0.65 to 1.37)	
Fourth quartile	77	87	98
Median OS (95% CI)	23.1 (18.8 to 26.6)	21.3 (17.3 to 24.6)	22.8 (19.1 to 27.2)
Hazard ratio (95% CI)	1.10 (0.78 to 1.55)	1.10 (0.79 to 1.54)	

NOTE. Median OS was measured in months. Data are given as No. of patients unless otherwise noted.

Abbreviations: Arm P, placebo; Arm V, PROSTVAC; Arm VG, PROSTVAC + granulocyte-macrophage colony-stimulating factor; NA, not available; OS, overall survival.

*Postvaccination cancer therapy with abiraterone acetate, enzalutamide, or sipuleucel-T.

†Tumor growth rates were derived for each patient with sufficient prostate-specific antigen data. More information about tumor growth rate is found in the Data Supplement.

was less robust than in postchemotherapy, likely because of subsequent therapies.^{4,6} It is possible that these life-prolonging therapies negatively affected the likelihood of this trial achieving positive results. Despite this statistical possibility, the lack of any signal of efficacy indicates that PROSTVAC, as a single agent in this setting, seems to be ineffective at a level that would justify the treatment of unselected patients. Preclinical evidence suggested that PROSTVAC generated fully functional T cells that were capable of trafficking to and infiltrating into murine models of prostate cancer.²¹ Accumulated immune data from multiple National Cancer Institute clinical trials also suggested that antitumor immune responses could be identified in the peripheral blood.²² The observed lack of clinical

signal suggests that either the immune responses generated in this study were not sufficient or there were other negative regulatory influences in the tumor microenvironment that prevented clinically relevant immune-mediated killing.

GM-CSF has been adopted by cancer vaccine developers on the basis of its properties of differentiation, migration, and activation of dendritic cells, including an enhancement of antigen cross-presentation^{23,24}; however, biologic effects of GM-CSF also stimulate other myeloid cells, including myeloid-derived suppressor cells, which inhibit the functionality of T cells.²⁵⁻²⁷ We observed an increase in adverse events in the treatment arm that contained GM-CSF, and as a result of the

TABLE 4. Best Overall Response by RECIST and Minimum Percentage Change in PSA Through Week 25/End-of-Treatment

Response	Arm V (n = 432)	Arm VG (n = 432)	Arm P (n = 433)
Best overall response, No. (%) [*]			
Complete	0	0	1 (0.2)
Partial	4 (0.9)	3 (0.7)	1 (0.2)
Stable disease	182 (42.1)	175 (40.5)	182 (42.0)
Progressive disease	140 (32.4)	133 (30.8)	124 (28.6)
Not evaluable	12 (2.8)	10 (2.3)	15 (3.5)
Minimum percentage change in PSA [†]			
No. of patients	420	424	425
Mean (SD)	56.2 (685.0)	19.3 (58.4)	27.9 (79.4)
Median	18.7	13.7	20.0

Abbreviations: Arm P, placebo; Arm V, PROSTVAC; Arm VG, PROSTVAC + granulocyte-macrophage colony-stimulating factor; PSA, prostate-specific antigen; SD, standard deviation.

^{*}Tumor evaluation was performed using RECIST version 1.1 criteria from computed tomography or magnetic resonance imaging scans evaluated by central reviewers for patients who completed the treatment period.

[†]Minimum percentage change includes the largest drop or minimum increase in PSA values during the treatment period, excluding any values post-early termination or initiation of the next line of anticancer therapy.

overall lack of efficacy of PROSTVAC versus placebo, our data do not support any definitive recommendation about GM-CSF, positive or negative. Therefore, use of GM-CSF as a vaccine adjuvant must still be considered investigational. A correlation between growth rate constant and survival has been reported in a retrospective analysis of five phase II clinical trials.²⁸ Our data are in agreement, showing a strong correlation between slower growth rate constant and longer

TABLE 5. Adverse Events Reported as Treatment-Related in 10% of Patients or Greater

Adverse Event Preferred Term	Arm V (n = 429)		Arm VG (n = 429)		Arm P (n = 428)	
	Any Grade	Grade 3-5	Any Grade	Grade 3-5	Any Grade	Grade 3-5
Treatment related						
Any	312 (72.7)	14 (3.3) [*]	340 (79.3)	20 (4.7) [*]	302 (70.6)	11 (2.6) [*]
Injection site erythema	200 (46.6)	2 (0.5)	255 (59.4)	4 (0.9)	198 (46.3)	0
Injection site pain	109 (25.4)	1 (0.2)	128 (29.8)	1 (0.2)	119 (27.8)	0
Injection site pruritus	77 (17.9)	0	109 (25.4)	0	57 (13.3)	0
Injection site swelling	73 (17.0)	1 (0.2)	101 (23.5)	0	67 (15.6)	0
Fatigue	64 (14.9)	1 (0.2)	74 (17.2)	3 (0.7)	68 (15.9)	1 (0.2)
Injection site induration	46 (10.7)	1 (0.2)	67 (15.6)	0	58 (13.6)	0
Influenza-like illness	35 (8.2)	0	49 (11.4)	1 (0.2)	32 (7.5)	0
Pyrexia	28 (6.5)	0	83 (19.3)	1 (0.2)	47 (11.0)	0
Cardiac disorders, irrespective of relationship, occurring in two or more patients in Arm V or VG						
Atrial flutter	5 (1.2)	1 (0.2)	0	0	2 (0.5)	1 (0.2)
Atrial fibrillation	2 (0.5)	1 (0.2)	3 (0.7)	2 (0.5)	4 (0.9)	3 (0.7)
Bradycardia	2 (0.5)	0	0	0	0	0
Cardiac failure	2 (0.5)	2 (0.5)	1 (0.2)	1 (0.2)	0	0
Acute MI	0	0	2 (0.5)	1 (0.2)	0	0
Angina pectoris	1 (0.2)	0	2 (0.5)	0	3 (0.7)	1 (0.2)
Tachycardia	0	0	2 (0.5)	0	2 (0.5)	0

NOTE. Data are given as No. of patients (%).

Abbreviations: Arm P, placebo; Arm V, PROSTVAC; Arm VG, PROSTVAC + granulocyte-macrophage colony-stimulating factor; MI, myocardial infarction.

^{*}No patient had any grade 4 or 5 treatment-related events, except for one patient in Arm VG who had a grade 4 event of pulmonary embolism.

survival regardless of treatment group. Our data, however, cannot confirm the hypothesis that patients with more indolent mCRPC derive greater benefit from vaccine therapy than do those with poorer prognostic factors,²⁹ considering the absence of an OS benefit in the entire study population. Nonetheless, we have demonstrated that tumor growth rate, as measured by the model used in this study, is a reasonable predictor of the risk of death on a population level. This tool could be used in clinical trials to stratify or select patients who are at high or low risk for death, as appropriate for the primary study end point.

PROSTVAC was found to be safe and well tolerated, with no unexpected TEAEs, which confirmed the result of earlier studies.^{13,14,30} Overall, TEAEs were similar to placebo and most commonly related to injection site reactions. An increased risk for myocarditis or pericarditis has been observed with replicating vaccinia virus strains used as preventive vaccines for smallpox (variola).³¹⁻³³ As PROSTVAC uses a replicating vaccinia strain as the vector, cardiac adverse events are a safety issue of special interest. No signal of cardiotoxicity was observed in our study, even with the population being in the high-risk category for cardiovascular events—that is, male, older than age 65 years (approximately 75% of our population were older than age 65 years).³⁴

Therapeutic cancer vaccines remain a valid immunotherapy option for prostate cancer, as supported by the survival benefit of sipuleucel-T.¹⁰ The choice of proper target antigens and adjuvant components that can overcome immune resistance within the tumor microenvironment are of critical importance. Along with the confounding factors that surround additional treatment options that became available during our study, it is not known, for instance, if the selection of prostatic acid phosphatase in sipuleucel-T versus PSA in PROSTVAC played a role in efficacy evaluation.

In conclusion, we observed that vaccines induce T cells that are capable of infiltrating tumors, but that this immune response does not translate into clinical benefit poses a major challenge to the immunotherapy community. Historical data have shown that PROSTVAC is capable of generating specific T-cell responses against PSA as well as cascade antigens,²² indicating that the poxvirus platform has the potential to induce clinical benefit in the right context—that is, with different antigen targets, in other disease settings, and in combination with checkpoint inhibition. This possibility is being evaluated in ongoing clinical trials.

AFFILIATIONS

¹National Institutes of Health, Bethesda, MD

²Aarhus Universitetshospital, Århus, Denmark

³Comprehensive Cancer Centers of Nevada, Las Vegas, NV

⁴St John of God Subiaco Hospital, Subiaco, Western Australia, Australia

⁵University of Utah Huntsman Cancer Institute, Salt Lake City, UT

⁶Royal Marsden Hospital, Sutton, United Kingdom

⁷Monash Medical Centre, Bentleigh, Victoria, Australia

⁸Herlev Hospital, Herlev, Denmark

⁹University of Colorado Cancer Center, Aurora, CO

¹⁰Vall d'Hebron Institute of Oncology, Vall d'Hebron University Hospital, Barcelona, Spain

¹¹Centre Hospitalier de l'Université de Montréal, Montréal, Quebec, Canada

¹²Carolina Urologic Research Center, Myrtle Beach, SC

¹³Bavarian Nordic, Morrisville, NC

¹⁴Radboudumc, Nijmegen, the Netherlands;

¹⁵Centre Hospitalier Départemental, La Roche sur Yon, France

¹⁶Aalborg Universitetshospital, Aalborg, Denmark

¹⁷North-Western State Medical University, Saint Petersburg, Russia

¹⁸Memorial Sloan Kettering Cancer Center, New York, NY

CORRESPONDING AUTHOR

James L. Gulley, MD, PhD, National Institutes of Health, 9000 Rockville Pike, Bethesda, MD 20892; e-mail: gulleyj@mail.nih.gov.

PRIOR PRESENTATION

Presented in part at the American Society of Clinical Oncology 2018 Annual Meeting, Chicago, IL, June 1-5, 2018.

SUPPORT

Supported by Bavarian Nordic, the National Institute for Health Research Biomedical Research Centre at the Royal Marsden National Health Service Foundation Trust, and the Institute of Cancer Research. Funded in part by National Cancer Institute Cancer Center Support Grant No.

P30-CA008748 and the Center for Cancer Research, National Cancer Institute.

AUTHORS' DISCLOSURES OF POTENTIAL CONFLICTS OF INTEREST AND DATA AVAILABILITY STATEMENT

Disclosures provided by the authors and data availability statement (if applicable) are available with this article at DOI <https://doi.org/10.1200/JCO.18.02031>.

AUTHOR CONTRIBUTIONS

Conception and design: James L. Gulley, Neal D. Shore, Winald R. Gerritsen, Niels C. Langkilde, Philip W. Kantoff

Financial support: Christopher R. Heery

Administrative support: Neal D. Shore, Christopher R. Heery, Andrey Novikov

Provision of study materials or patients: James L. Gulley, Michael Borre, Nicholas J. Vogelzang, Siobhan Ng, Neeraj Agarwal, David W. Pook, Joan Carles, Fred Saad, Winald R. Gerritsen, Frank Priou, Niels C. Langkilde, Andrey Novikov

Collection and assembly of data: James L. Gulley, Michael Borre, Nicholas J. Vogelzang, Siobhan Ng, Neeraj Agarwal, Chris C. Parker, David W. Pook, Per Rathenborg, Thomas W. Flaig, Fred Saad, Liddy Chen, Christopher R. Heery, Frank Priou

Data analysis and interpretation: James L. Gulley, Nicholas J. Vogelzang, Siobhan Ng, Neeraj Agarwal, Per Rathenborg, Thomas W. Flaig, Joan Carles, Fred Saad, Neal D. Shore, Liddy Chen, Christopher R. Heery, Winald R. Gerritsen, Niels C. Langkilde, Andrey Novikov, Philip W. Kantoff

Manuscript writing: All authors

Final approval of manuscript: All authors

Accountable for all aspects of the work: All authors

ACKNOWLEDGMENT

The authors thank all the patients who participated in the trial and their families. The authors also thank members of the study team (Bavarian Nordic) and Cesar Pico-Navarro (Bavarian Nordic) for scientific

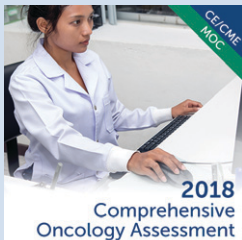
contribution. Medical writing and editorial support was provided by Lorraine R. Baer, PharmD, of Baer PharMed Consulting and funded by Bavarian-Nordic.

REFERENCES

1. Basch E, Loblaw DA, Oliver TK, et al: Systemic therapy in men with metastatic castration-resistant prostate cancer: American Society of Clinical Oncology and Cancer Care Ontario clinical practice guideline. *J Clin Oncol* 32:3436-3448, 2014
2. Virgo KS, Basch E, Loblaw DA, et al: Second-line hormonal therapy for men with chemotherapy-naïve, castration-resistant prostate cancer: American Society of Clinical Oncology provisional clinical opinion. *J Clin Oncol* 35:1952-1964, 2017
3. Fizazi K, Scher HI, Molina A, et al: Abiraterone acetate for treatment of metastatic castration-resistant prostate cancer: Final overall survival analysis of the COU-AA-301 randomised, double-blind, placebo-controlled phase 3 study. *Lancet Oncol* 13:983-992, 2012 [Errata: *Lancet Oncol* 13:e464, 2012; *Lancet Oncol* 15:e365, 2014]
4. Ryan CJ, Smith MR, Fizazi K, et al: Abiraterone acetate plus prednisone versus placebo plus prednisone in chemotherapy-naïve men with metastatic castration-resistant prostate cancer (COU-AA-302): Final overall survival analysis of a randomised, double-blind, placebo-controlled phase 3 study. *Lancet Oncol* 16:152-160, 2015
5. Scher HI, Fizazi K, Saad F, et al: Increased survival with enzalutamide in prostate cancer after chemotherapy. *N Engl J Med* 367:1187-1197, 2012
6. Beer TM, Armstrong AJ, Rathkopf DE, et al: Enzalutamide in metastatic prostate cancer before chemotherapy. *N Engl J Med* 371:424-433, 2014
7. Petrylak DP, Tangen CM, Hussain MH, et al: Docetaxel and estramustine compared with mitoxantrone and prednisone for advanced refractory prostate cancer. *N Engl J Med* 351:1513-1520, 2004
8. Berthold DR, Pond GR, Soban F, et al: Docetaxel plus prednisone or mitoxantrone plus prednisone for advanced prostate cancer: Updated survival in the TAX 327 study. *J Clin Oncol* 26:242-245, 2008
9. de Bono JS, Oudard S, Ozguroglu M, et al: Prednisone plus cabazitaxel or mitoxantrone for metastatic castration-resistant prostate cancer progressing after docetaxel treatment: A randomised open-label trial. *Lancet* 376:1147-1154, 2010
10. Kantoff PW, Higano CS, Shore ND, et al: Sipuleucel-T immunotherapy for castration-resistant prostate cancer. *N Engl J Med* 363:411-422, 2010
11. Parker C, Nilsson S, Heinrich D, et al: Alpha emitter radium-223 and survival in metastatic prostate cancer. *N Engl J Med* 369:213-223, 2013
12. Madan RA, Arlen PM, Mohebtash M, et al: PROSTVAC-VF: A vector-based vaccine targeting PSA in prostate cancer. *Expert Opin Investig Drugs* 18:1001-1011, 2009
13. Arlen PM, Skarupa L, Pazdur M, et al: Clinical safety of a viral vector based prostate cancer vaccine strategy. *J Urol* 178:1515-1520, 2007
14. Kantoff PW, Schuetz TJ, Blumenstein BA, et al: Overall survival analysis of a phase II randomized controlled trial of a poxviral-based PSA-targeted immunotherapy in metastatic castration-resistant prostate cancer. *J Clin Oncol* 28:1099-1105, 2010
15. Grosenbach DW, Barrientos JC, Schlom J, et al: Synergy of vaccine strategies to amplify antigen-specific immune responses and antitumor effects. *Cancer Res* 61:4497-4505, 2001
16. Kantoff PW, Gulley JL, Pico-Navarro C: Revised overall survival analysis of a phase II, randomized, double-blind, controlled study of PROSTVAC in men with metastatic castration-resistant prostate cancer. *J Clin Oncol* 35:124-125, 2017
17. Kass E, Panicali DL, Mazzara G, et al: Granulocyte/macrophage-colony stimulating factor produced by recombinant avian poxviruses enriches the regional lymph nodes with antigen-presenting cells and acts as an immunoadjuvant. *Cancer Res* 61:206-214, 2001
18. Faries MB, Hsueh EC, Ye X, et al: Effect of granulocyte/macrophage colony-stimulating factor on vaccination with an allogeneic whole-cell melanoma vaccine. *Clin Cancer Res* 15:7029-7035, 2009
19. Slingluff CL Jr, Petroni GR, Olson WC, et al: Effect of granulocyte/macrophage colony-stimulating factor on circulating CD8⁺ and CD4⁺ T-cell responses to a multipptide melanoma vaccine: Outcome of a multicenter randomized trial. *Clin Cancer Res* 15:7036-7044, 2009
20. Halabi S, Small EJ, Kantoff PW, et al: Prognostic model for predicting survival in men with hormone-refractory metastatic prostate cancer. *J Clin Oncol* 21:1232-1237, 2003
21. Mandl SJ, Rountree RB, Dela Cruz TB, et al: Elucidating immunologic mechanisms of PROSTVAC cancer immunotherapy. *J Immunother Cancer* 2:34, 2014
22. Gulley JL, Madan RA, Tsang KY, et al: Immune impact induced by PROSTVAC (PSA-TRICOM), a therapeutic vaccine for prostate cancer. *Cancer Immunol Res* 2:133-141, 2014
23. Disis ML, Bernhard H, Shiota FM, et al: Granulocyte-macrophage colony-stimulating factor: An effective adjuvant for protein and peptide-based vaccines. *Blood* 88:202-210, 1996
24. Chang DZ, Lomazow W, Joy Somberg C, et al: Granulocyte-macrophage colony stimulating factor: An adjuvant for cancer vaccines. *Hematology* 9:207-215, 2004
25. Serafini P, Carbley R, Noonan KA, et al: High-dose granulocyte-macrophage colony-stimulating factor-producing vaccines impair the immune response through the recruitment of myeloid suppressor cells. *Cancer Res* 64:6337-6343, 2004
26. Filipazzi P, Valenti R, Huber V, et al: Identification of a new subset of myeloid suppressor cells in peripheral blood of melanoma patients with modulation by a granulocyte-macrophage colony-stimulation factor-based antitumor vaccine. *J Clin Oncol* 25:2546-2553, 2007
27. Ribechini E, Hutchinson JA, Hergovits S, et al: Novel GM-CSF signals via IFN- γ /IRF-1 and AKT/mTOR license monocytes for suppressor function. *Blood Adv* 1:947-960, 2017
28. Stein WD, Gulley JL, Schlom J, et al: Tumor regression and growth rates determined in five intramural NCI prostate cancer trials: The growth rate constant as an indicator of therapeutic efficacy. *Clin Cancer Res* 17:907-917, 2011
29. Gulley JL, Arlen PM, Madan RA, et al: Immunologic and prognostic factors associated with overall survival employing a poxviral-based PSA vaccine in metastatic castrate-resistant prostate cancer. *Cancer Immunol Immunother* 59:663-674, 2010
30. DiPaola RS, Plante M, Kaufman H, et al: A phase I trial of pox PSA vaccines (PROSTVAC-VF) with B7-1, ICAM-1, and LFA-3 co-stimulatory molecules (TRICOM) in patients with prostate cancer. *J Transl Med* 4:1, 2006
31. Arness MK, Eckart RE, Love SS, et al: Myopericarditis following smallpox vaccination. *Am J Epidemiol* 160:642-651, 2004
32. Morgan J, Roper MH, Sperling L, et al: Myocarditis, pericarditis, and dilated cardiomyopathy after smallpox vaccination among civilians in the United States, January-October 2003. *Clin Infect Dis* 46:S242-S250, 2008 (suppl 3)

33. Petersen BW, Damon IK, Pertowski CA, et al: Clinical guidance for smallpox vaccine use in a postevent vaccination program. *MMWR Recomm Rep* 64:1-26, 2015
34. Curry SJ, Krist AH, Owens DK, et al: Risk assessment for cardiovascular disease with nontraditional risk factors: US Preventive Services Task Force recommendation statement. *JAMA* 320:272-280, 2018

Advanced Practitioners - Test Your Knowledge With the Comprehensive Oncology Assessment



The 2018 Comprehensive Oncology Assessment is a 125-question self-evaluation that covers a wide range of oncology topics as it relates to patient care. Identify areas that would benefit from continued learning. Earn 15 CE/CME, MOC, nursing, and pharmacy credits.

Enroll today at university.asco.org/2018-comprehensive-oncology-assessment

ASCO University

AUTHORS' DISCLOSURES OF POTENTIAL CONFLICTS OF INTEREST**Phase III Trial of PROSTVAC in Asymptomatic or Minimally Symptomatic Metastatic Castration-Resistant Prostate Cancer**

The following represents disclosure information provided by authors of this manuscript. All relationships are considered compensated. Relationships are self-held unless noted. I = Immediate Family Member, Inst = My Institution. Relationships may not relate to the subject matter of this manuscript. For more information about ASCO's conflict of interest policy, please refer to www.asco.org/rwc or ascopubs.org/jco/site/ffc.

James L. Gulley

Research Funding: EMD Serono (Inst), Bavarian Nordic (Inst), Astellas Medivation (Inst), Pfizer (Inst), NantBioScience (Inst), Bristol-Myers Squibb (Inst), Merck (Inst)

Michael Borre

Honoraria: Janssen-Cilag, Astellas Pharma, Amgen, Sanofi

Nicholas J. Vogelzang

Employment: US Oncology

Stock and Other Ownership Interests: Caris Life Sciences

Honoraria: UpToDate, Pfizer, Novartis

Consulting or Advisory Role: Pfizer, Bayer, Genentech, Heron, AstraZeneca, Caris Life Sciences, Fujifilm, Tolero Pharmaceuticals, Merck, Astellas Pharma, Boehringer Ingelheim

Speakers' Bureau: Bayer, Sanofi, Genentech, Bristol-Myers Squibb, Exelixis, AstraZeneca, MedImmune

Research Funding: US Oncology (Inst), Endocyte (Inst), Merck (Inst), Suzhou Kintor Pharmaceuticals (Inst)

Expert Testimony: Novartis

Travel, Accommodations, Expenses: Genentech, US Oncology, Pfizer, Bayer, Onyx Pharmaceuticals, Exelixis, AstraZeneca, MedImmune, Sanofi

Siobhan Ng

Honoraria: Astellas Pharma, Amgen, MSD Oncology, Bayer, Johnson & Johnson, Ipsen, Pfizer

Travel, Accommodations, Expenses: Astellas Pharma, Amgen

Neeraj Agarwal

Consulting or Advisory Role: Pfizer, Exelixis, Medivation, Astellas, Eisai, Merck, Novartis, EMD Serono, Clovis Oncology, Genentech, Bristol-Myers Squibb, AstraZeneca, Nektar, Eli Lilly, Bayer, Foundation One, Argos Therapeutics

Research Funding: Bayer (Inst), Bristol-Myers Squibb (Inst), GlaxoSmithKline (Inst), Medivation (Inst), Takeda (Inst), Novartis (Inst), Pfizer (Inst), BN ImmunoTherapeutics (Inst), Exelixis (Inst), TRACON Pharma (Inst), Rexahn Pharmaceuticals (Inst), Amgen (Inst), AstraZeneca (Inst), Active Biotech (Inst), Bavarian Nordic (Inst), Calithera Biosciences (Inst), Celldex (Inst), Eisai (Inst), Genentech (Inst), Immunomedics (Inst), Janssen Pharmaceuticals (Inst), Merck (Inst), Newlink Genetics (Inst), Prometheus (Inst), Sanofi (Inst)

Chris C. Parker

Honoraria: Bayer, Janssen Pharmaceuticals, Advanced Accelerator Applications

Consulting or Advisory Role: Bayer Schering Pharma, Janssen Pharmaceuticals

Research Funding: Bayer Schering Pharma (Inst)

Travel, Accommodations, Expenses: Bayer Schering Pharma, Janssen Pharmaceuticals

David W. Pook

Honoraria: Astellas Pharma, Ipsen, Novartis

Consulting or Advisory Role: Bristol-Myers Squibb, Pfizer, Merck Sharp & Dohme (Inst)

Research Funding: Medivation (Inst), Bristol-Myers Squibb (Inst), Roche (Inst), Exelixis (Inst), Merck Sharp & Dohme (Inst), Pfizer (Inst), Astellas Pharma (Inst), Bayer (Inst)

Travel, Accommodations, Expenses: Bristol-Myers Squibb, Astellas Pharma, Pfizer

Thomas W. Flaig

Leadership: Aurora Oncology

Stock and Other Ownership Interests: Aurora Oncology

Honoraria: BN ImmunoTherapeutics

Consulting or Advisory Role: GTx

Research Funding: Novartis, Bavarian Nordic, Dendreon, GTx, Janssen Oncology, Medivation, Sanofi, Pfizer, Bristol-Myers Squibb, Genentech, Exelixis, Aragon Pharmaceuticals, Sotio, Tokai Pharmaceuticals, AstraZeneca, MedImmune, Eli Lilly, Astellas Pharma, Agensys, Seattle Genetics, La Roche-Posay

Patents, Royalties, Other Intellectual Property: The University of Colorado has filed two patents related in which I am an inventor related to early-stage bladder cancer treatment and detection; neither is commercialized or licensed at this time

Joan Carles

Consulting or Advisory Role: Bayer, Johnson & Johnson, Bristol-Myers Squibb, Astellas Pharma, Pfizer, Sanofi, MSD Oncology, Roche

Speakers' Bureau: Bayer, Johnson & Johnson, Asofarma, Astellas Pharma

Fred Saad

Honoraria: Astellas Pharma, Janssen Oncology, Sanofi, Bayer, AstraZeneca

Consulting or Advisory Role: Astellas Pharma, Janssen Oncology, Sanofi, AstraZeneca, MedImmune, Bayer

Research Funding: Astellas Pharma (Inst), Bayer (Inst), Janssen Oncology (Inst), Sanofi (Inst), AstraZeneca (Inst)

Neal D. Shore

Consulting or Advisory Role: Bayer, Janssen Scientific Affairs, Dendreon, Tolmar, Ferring, Medivation, Astellas Pharma, Amgen, Pfizer, AstraZeneca, Genentech, Myovant Sciences

Speakers' Bureau: Janssen Pharmaceuticals, Bayer, Dendreon

Liddy Chen

Employment: Bavarian Nordic

Christopher R. Heery

Employment: Bavarian Nordic

Leadership: Bavarian Nordic

Stock and Other Ownership Interests: Bavarian Nordic

Honoraria: MPM Capital

Consulting or Advisory Role: MPM Capital

Winald R. Gerritsen

Consulting or Advisory Role: Sanofi (Inst), Bayer (Inst), Bristol-Myers Squibb (Inst), Amgen (Inst), Astellas Pharma (Inst)

Speakers' Bureau: Merck Sharp & Dohme, Bayer

Research Funding: Astellas Pharma (Inst), Janssen-Cilag (Inst), Bayer (Inst)

Travel, Accommodations, Expenses: Merck Sharp & Dohme

Philip W. Kantoff

Stock and Other Ownership Interests: Placon, Druggability Technologies, Tarveda Therapeutics, Context Therapeutics, Seer

Consulting or Advisory Role: Bavarian Nordic, Janssen Pharmaceuticals, BIND Biosciences, Metamark Genetics, Merck, OncoCellIMDX, Sanofi, Genentech, Tarveda Therapeutics, Druggability Technologies, Progenity, Thermo Fisher Scientific, Context Therapeutics, GE Healthcare, New England Research Institutes, Seer

Patents, Royalties, Other Intellectual Property: Method for predicting the risk of prostate cancer morbidity and mortality, predicting and treating prostate cancer, methods for predicting likelihood of responding to treatment, chromosome copy number gain as a biomarker of urothelial carcinoma lethality, drug combinations to treat cancer, somatic ERCC2 mutations correlate with cisplatin sensitivity in muscle-invasive urothelial carcinoma (patent), Up-to-Date royalties, Wolters Kluwer royalties, methods and kits for determining sensitivity to cancer treatment, composition and methods for screening and diagnosis of prostate cancer

Travel, Accommodations, Expenses: Sanofi, Druggability Technologies

No other potential conflicts of interest were reported.