



**AALBORG UNIVERSITY**  
DENMARK

**Aalborg Universitet**

## **On the robustness of real-time myoelectric control investigations**

*A multiday Fitts' law approach*

Waris, Asim; Mendez, Irene; Englehart, Kevin; Jensen, Winnie; Kamavuako, Ernest Nlandu

*Published in:*  
Journal of Neural Engineering

*DOI (link to publication from Publisher):*  
[10.1088/1741-2552/aae9d4](https://doi.org/10.1088/1741-2552/aae9d4)

*Creative Commons License*  
CC BY-NC-ND 4.0

*Publication date:*  
2019

*Document Version*  
Accepted author manuscript, peer reviewed version

[Link to publication from Aalborg University](#)

*Citation for published version (APA):*  
Waris, A., Mendez, I., Englehart, K., Jensen, W., & Kamavuako, E. N. (2019). On the robustness of real-time myoelectric control investigations: A multiday Fitts' law approach. *Journal of Neural Engineering*, 16(2), Article 026003. <https://doi.org/10.1088/1741-2552/aae9d4>

### **General rights**

Copyright and moral rights for the publications made accessible in the public portal are retained by the authors and/or other copyright owners and it is a condition of accessing publications that users recognise and abide by the legal requirements associated with these rights.

- Users may download and print one copy of any publication from the public portal for the purpose of private study or research.
- You may not further distribute the material or use it for any profit-making activity or commercial gain
- You may freely distribute the URL identifying the publication in the public portal -

### **Take down policy**

If you believe that this document breaches copyright please contact us at [vbn@aub.aau.dk](mailto:vbn@aub.aau.dk) providing details, and we will remove access to the work immediately and investigate your claim.



## King's Research Portal

DOI:

[10.1088/1741-2552/aae9d4](https://doi.org/10.1088/1741-2552/aae9d4)

*Document Version*

Peer reviewed version

[Link to publication record in King's Research Portal](#)

*Citation for published version (APA):*

Waris, A., Mendez, I., Englehart, K., Jensen, W., & Kamavuako, E. N. (2019). On the robustness of real-time myoelectric control investigations: A multiday Fitts' law approach. *Journal Of Neural Engineering*, 16(2), [026003]. <https://doi.org/10.1088/1741-2552/aae9d4>

### **Citing this paper**

Please note that where the full-text provided on King's Research Portal is the Author Accepted Manuscript or Post-Print version this may differ from the final Published version. If citing, it is advised that you check and use the publisher's definitive version for pagination, volume/issue, and date of publication details. And where the final published version is provided on the Research Portal, if citing you are again advised to check the publisher's website for any subsequent corrections.

### **General rights**

Copyright and moral rights for the publications made accessible in the Research Portal are retained by the authors and/or other copyright owners and it is a condition of accessing publications that users recognize and abide by the legal requirements associated with these rights.

- Users may download and print one copy of any publication from the Research Portal for the purpose of private study or research.
- You may not further distribute the material or use it for any profit-making activity or commercial gain
- You may freely distribute the URL identifying the publication in the Research Portal

### **Take down policy**

If you believe that this document breaches copyright please contact [librarypure@kcl.ac.uk](mailto:librarypure@kcl.ac.uk) providing details, and we will remove access to the work immediately and investigate your claim.

# On the robustness of real-time myoelectric control investigations: A multiday Fitts' law approach

Asim Waris<sup>1,2</sup>, Irene Mendez<sup>1</sup>, Kevin Englehart<sup>3</sup>, Winnie Jensen<sup>1</sup>, Ernest Nlandu

Kamavuako<sup>4\*</sup>

aw@hst.aau.dk, imende16@studen.aau.dk, kengleha@unb.ca, wj@hst.aau.dk, ernest.kamavuako@kcl.ac.uk

<sup>1</sup>SMI, Department of Health Science and Technology, Aalborg University, Aalborg, Denmark.

<sup>2</sup>SMME, National University of Sciences and Technology, Islamabad, Pakistan.

<sup>3</sup>Institute of Biomedical Engineering, University of New Brunswick, Fredericton, Canada.

<sup>4</sup>Center for Robotics Research, Department of Informatics, King's College London, London, United Kingdom.

## ABSTRACT

**Background and Aim:** Real-time myoelectric experimental protocol is considered as means to quantify usability of myoelectric control schemes. While usability should be considered over time to assure clinical robustness, all real-time studies reported thus far are limited to a single session or day and thus the influence of time on real-time performance is still unexplored. In this study, the aim was to develop a novel experimental protocol in order to quantify the effect of time on real-time performance measures over multiple days using a Fitts' law approach.

**Methods:** Four metrics: throughput, completion rate, path efficiency and overshoot, were assessed using three train-test strategies: (i) An artificial neural network (ANN) classifier was trained on data collected from the previous day and tested on present day (BDT) (ii) Trained and tested on the same day (WDT) and (iii) trained on all previous days including present day and tested on present day (CDT) in a week-long experimental protocol.

**Results:** It was found that on average, Completion rate ( $98.37 \pm 1.47$  %) of CDT was significantly better ( $P < 0.01$ ) than BDT ( $86.25 \pm 3.46$  %) and WDT ( $94.22 \pm 2.74$  %). Throughput ( $0.40 \pm 0.03$  bits/s) of CDT was significantly better ( $P = 0.001$ ) than BDT ( $0.38 \pm 0.03$  bits/s). Offline analysis showed a different trend due to the difference in the training strategies.

**Conclusion:** Results suggest that increasing the size of training set over time can be beneficial to assure robust performance of the system over time.

**Keywords:** Pattern recognition; Real-time control; Myoelectric control; Multiday Fitts' law

\*Corresponding Author: Ernest Nlandu Kamavuako, Center for Robotics Research (CORE), Department of Informatics, King's College London, England. (N)5.03, Bush House, Strand Campus, Tel: +44 (0)20 7848 8666.

Email: [ernest.kamavuako@kcl.ac.uk](mailto:ernest.kamavuako@kcl.ac.uk)

## 1 I. INTRODUCTION

2 The natural human arm/hand can perform diverse controlled movements with ease. The appropriate and  
3 modulated activity of each muscle in the upper limb contributes to improving the dexterity of motions. But any  
4 type of amputation in the upper limb (transradial or transhumeral) can severely limit the abilities to perform  
5 activities of daily life. Commercially available upper limb prostheses reproduce a lot of these motions, but they  
6 are still behind in intuitively and finesse in their ability to mimic the natural hands [1].

7 Most electrically powered prostheses use the amplitude of the Electromyogram (EMG) signal as input to control  
8 motions of a terminal device [2]. Two approaches (i) pattern recognition-based techniques, which focus in  
9 extracting more useful information in EMG signal and classifying multiple motions [3-5], (ii) regression  
10 techniques based on force/position estimation which focus on providing proportional control [6-8], have been the  
11 interest of researchers in recent times.

12 Pattern recognition (PR) techniques have been widely reported in the literature and have great potential in  
13 improving the functionalities of myoelectric prostheses [3-5]. With these methods, EMG patterns from multiple  
14 electrodes are used to decode multiple classes of motions under the assumption that each pattern from the set of  
15 selected muscles generates repeatable EMG signals. Many different PR implementations have been investigated  
16 with different classifiers, feature sets, signal conditioning, or post-processing techniques [9-10]. In this regard,  
17 researchers have evaluated the offline effects of limb positions, inter-electrode distance, force variation, muscle  
18 fatigue and electrode shift, on PR, just to mention some of the challenges that are faced by these systems [11-13].  
19 Although offline evaluation of PR control strategies is a useful performance metric, studies have shown that it is  
20 not a good representative of usability [14-16].

21 Researchers have demonstrated multiple approaches to real-time myoelectric control in the literature. First of its  
22 type was used by Englehart et al. (2003), who used a continuous classification algorithm to find real-time accuracy  
23 and response time [17]. It was suggested that the response time of a control system should not introduce a delay  
24 that is perceivable by the user. This threshold is generally regarded to be roughly 300 ms. Lock et al. (2005)  
25 developed CEVEN (Classifier Evaluation in a Virtual ENvironment) implemented in MATLAB. Subjects were  
26 asked to perform virtual clothes pin task and found a weak correlation between classification accuracy and  
27 usability in real-time [18]. Hargrove et al. (2007) performed a similar test by including transient state data in the  
28 training of classifier and found that offline classification accuracy may reduce but this will result in a reduction  
29 of completion time in real-time performance [19]. Kuiken et al. (2009) introduced the target achievement control  
30 (TAC) test in which users move a virtual arm into a target posture using PR. The need for feedback in myoelectric

1 control was highlighted in the study as it can provide more information about user experience in real-time  
2 myoelectric control [20].

3 Fitts' law test has been used in myoelectric control to quantify and illustrate human motor performance in detail  
4 using principles derived from Shannon's work in communication theory [21-22]. Fitts' law test has also been  
5 extensively applied in Human-computer interfaces including various human motion testing and devices such as  
6 mouse, touchpads [23-24]. A Fitts' law approach using EMG based PR has proven to significantly improve the  
7 control (sequential, proportional and simultaneous) over the conventional myoelectric control strategy (direct  
8 control) [25-28]; suggesting that a PR algorithm can be used in real-time as a control strategy to predict the user's  
9 intended movements with high performance. As robustness over time is an essential parameter for clinical  
10 translation of PR schemes, a number of studies have been conducted for longer periods of time in off-line  
11 evaluation [29-32]. These studies have shown that offline performance decreases with increasing time difference  
12 between training and testing days of PR based myoelectric control and daily calibration can improve the overall  
13 performance. However, most studies have assessed EMG based PR in acute settings only [33-35]. Smith et al.  
14 (2016) studied the ability of linear regression model to decode patterns of muscles co-activation using  
15 intramuscular EMG [33]. Kamavuako et al. (2014) studied the usability of intramuscular EMG in short-term  
16 scenarios for two-degree freedom using Fitts' law approach [34]. Scheme et al. (2013) validated a novel PR  
17 technique in a 3-D environment using Fitts' law [35]. Therefore, it remains unknown whether real-time  
18 performance can be maintained when the tests are performed on multiple days and with different training-testing  
19 strategies.

20 In this study, we aimed to develop an experimental protocol in order to quantify the robustness of the real-time  
21 investigations over time with multiple train-test strategies. Most of the studies performed online recently  
22 underwent training and testing of the classifier on the same day, providing an ideal condition for reporting  
23 performance. This may not be representative of clinical usability which requires users to perform activities over  
24 time including the effect of donning and doffing the electrodes. To understand the effect of different training  
25 strategies of the classifier over time in real time, a week-long experiment was performed on ten able-bodied  
26 subjects. Fitts' law was implemented with three train-test strategies (i) training of classifier and testing within a  
27 day (ii) training of classifier and testing with one-day difference (iii) training of classifier on combined data from  
28 all days and testing on the current day. Offline classification performance was evaluated using three train-test  
29 strategies (i) Within-day classification error (WCE) (ii) Between-day classification error (BCE) (iii) Combined-  
30 day classification error (CCE).

## II. METHODS

### a) Subjects

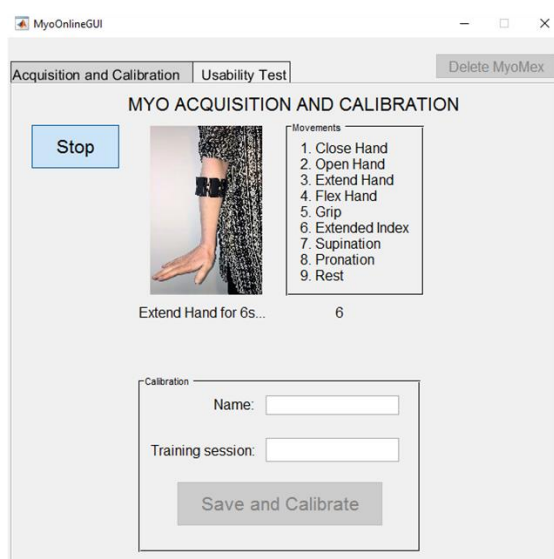
Ten able-bodied subjects participated in the experiment (8 men/2 women age range: 22-36, mean 26.4). Participation of all subjects was voluntary, and each subject provided informed written consent. All subjects had no history of a known upper extremity or musculoskeletal disorders. The procedures were in accordance with the Declaration of Helsinki and approved by the local ethical committee of the region of Northern Jutland (approval no: N-20160021).

### b) Data Collection

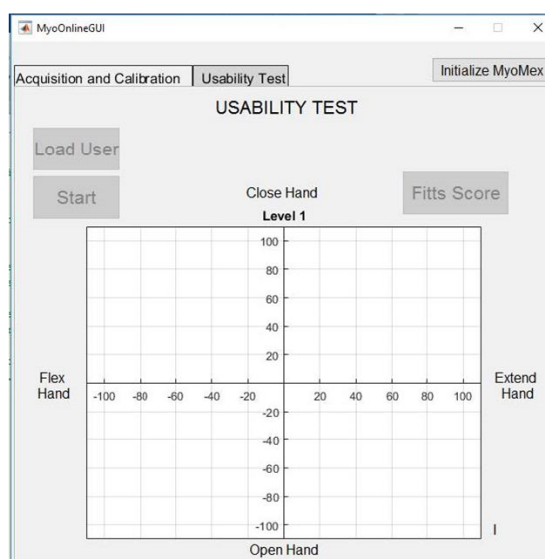
EMG signals for different motions were recorded using the Myo armband (MYO) which is commercially available and developed by Thalmic Labs (Figure 1a). It has eight circularly arranged surface electrodes worn around the forearm muscles. The sampling frequency is fixed at 200 Hz with 8-bit precision. The signal from the hardware is transmitted wirelessly to a computer using the Bluetooth Low Energy (BLE) protocol. This system provides a good research platform and has now been used in different studies [36-38].



(a)



(b)



(c)

1 **Figure 1.** Experiment setup with (a) number of motions for which data was recorded (b) GUI for off-line training  
2 and (c) for real-time testing.

### 3 c) *Experimental Procedure*

4 A week-long experimental protocol was designed, and data were recorded during the first four days and on the  
5 seventh day. No recording was performed on day four and five to measure the effect of a break on performance.  
6 In each experimental session, subjects were first guided about the experimental protocol and they were asked to  
7 produce a medium level contraction from rest to motion, prompted by the image of the selected motion using a  
8 custom-made Graphical User Interface (Figure 1b). Training data were collected as followed: Four active motions  
9 (Hand open, Hand close, Wrist flexion, wrist extension) and one rest (no motion) were collected each with six  
10 seconds duration. The order of the motions was randomized, and a six seconds break was allowed between  
11 motions. Furthermore, a rest time of twelve seconds was given after completion of each set. After this round of  
12 data recording, the signals were processed as described in section II followed by the online experiment (Fitts'  
13 law).

14 **Table 1:** Scheme of online testing in the experiment.

	<b>Day 1</b>	<b>Day 2</b>	<b>Day 3</b>	<b>Day 4</b>	<b>Day7</b>
	<i>TrainDay1</i>	<i>TrainDay2</i>	<i>TrainDay3</i>	<i>TrainDay4</i>	<i>TrainDay7</i>
<i>BDT</i>		<i>TrainDay1TestDay2</i>	<i>TrainDay2TestDay3</i>	<i>TrainDay3TestDay4</i>	<i>TrainDay4TestDay7</i>
<i>WDT</i>	<i>TrainDay1TestDay1</i>	<i>TrainDay2TestDay2</i>	<i>TrainDay3TestDay3</i>	<i>TrainDay4TestDay4</i>	<i>TrainDay7TesDay7</i>
<i>CDT</i>		<i>TrainDay1- 2TestDay2</i>	<i>TrainDay1-2- 3TestDay3</i>	<i>TrainDay1-2-3- 4TestDay4</i>	<i>TrainDay1-2-3-4- 7TestDay7</i>

15  
16 During Fitt's law implementation, subjects were required to move the cursor from the origin of the axis (no  
17 motion) to a target location (randomly selected among the 8 possible locations) having distance  $D$  from origin and  
18 Width  $W$ . The cursor moved upwards for hand open, downwards for hand close, left for wrist flexion and right  
19 for wrist extension. The index of difficulty ( $ID$ ) was calculated for each target location based on its distance  $D$   
20 from its origin and width  $W$  of the target. Table 2 shows a different combination of target distances and widths.  
21 The ID was computed as provided in Eq. (1).

$$22 \quad ID = \log_2 \left( \frac{D}{W} + 1 \right) \quad 1$$

23 **Table 2:** ID is the index of difficulty (in bits). D and W are the distance and width of the target.

<b>Distance(D)</b>	<b>Width(W)</b>	<b>Index of Difficulty (ID)</b>
<b>50</b>	5	3.46
<b>50</b>	10	2.59
<b>50</b>	20	1.81
<b>100</b>	5	4.39
<b>100</b>	10	3.46
<b>100</b>	20	2.59

1

2 During the online tests, the subject was asked to hold the position within the target for one second (dwell time)  
3 for the trial to be considered successful [39-40]. If the subject was unable to reach the target within a 15 second  
4 time limit, the online trial was considered unsuccessful and the subject moved on to the next target with the cursor  
5 back at the origin. Three sessions per train-test combination were performed per day. In each session, each motion  
6 was tested six times (thus 18 times in total for all three sessions) so in total 24 targets to be reached per session.  
7 In order to quantify the performance of the real-time system, four performance metrics were assessed: Throughput,  
8 Path Efficiency, Overshoot, and Completion Rate. Throughput describes usability through the tradeoff of speed  
9 and accuracy and, when averaged over the entire test, it is a convenient summary of performance [21]. Throughput  
10 is mathematically defined as the ratio between the index of difficulty and movement time, which is the time (in  
11 seconds) taken to acquire the target. It is a measure of the amount of information the subject can convey through  
12 a command source as it relates to the task [34]. Path Efficiency describes the systems quality of control. It is  
13 computed by dividing the straight-line distance by the actual distance traveled [40] Overshoot describes the ability  
14 to stop on a target. It is the number of occurrences of the cursor being on target and then leaving the target before  
15 the end of the 1-s dwell time (across all targets), divided by the total number of targets. Completion Rate describes  
16 the overall success; the percentage of tests completed within the allowed time [41]. Three types of test were  
17 performed online (Figure 1c) on each day, besides for day one, where only one test was performed: (i) A classifier  
18 was trained on data collected from the previous day and tested on present day (BDT) (ii) Trained and tested on  
19 data from the present day (WDT) and (iii) trained on all previous days including present day and tested on present  
20 day (CDT). This is the main focus of this study in order to assess whether inclusion of previous data would surpass  
21 the WDT performance. On day 1 only WDT was performed. Each motion was tested 18 times per training strategy.  
22 For BDT and CDT, training data from different days were concatenated and used to train the classifier prior to  
23 the online tests.



#### 1        *d) Signal Processing*

2 From the six seconds of contraction time, Steady state part, the middle four seconds of the six seconds data  
3 segment, was segmented using an overlapping window of 200ms with 50ms increment. Six features were  
4 investigated for this study: Waveform Length (WL), Mean Absolute Value (MAV), Willison Amplitude  
5 (WAMP), Cardinality (CARD), Slope Sign Changes (SSC) and Zero Crossings (ZC). An Artificial Neural  
6 Network (ANN) was used as a training and testing classifier. The ANN consisting of 15 neurons in the hidden  
7 layer was trained using the training data and stored in a file. The trained ANN was loaded to the Fitts' law test to  
8 classify the hand gestures, mapped for cursor control. For the sake of completeness, offline classification analysis  
9 was conducted on data recorded for training using the same training-testing strategies applied to online  
10 experiments except for CDT, where the present data was not included in the training. This was done to avoid  
11 lengthy data recording during training. Classification error, computed as the ratio between the number of  
12 misclassification and the total number of classification, was used as the offline performance measure. Between-  
13 day classification error (BCE) was defined as training and testing data from two different days, Error  $ij$  was  
14 obtained by training data on day  $i$  and testing on day  $j$ . Within-day classification error was defined as training and  
15 testing data from the same day. Error  $ij$  was obtained by applying two-fold validation. Combined-day  
16 classification error (CCE) was defined as training data from all previous days or day and test data from the current  
17 day.

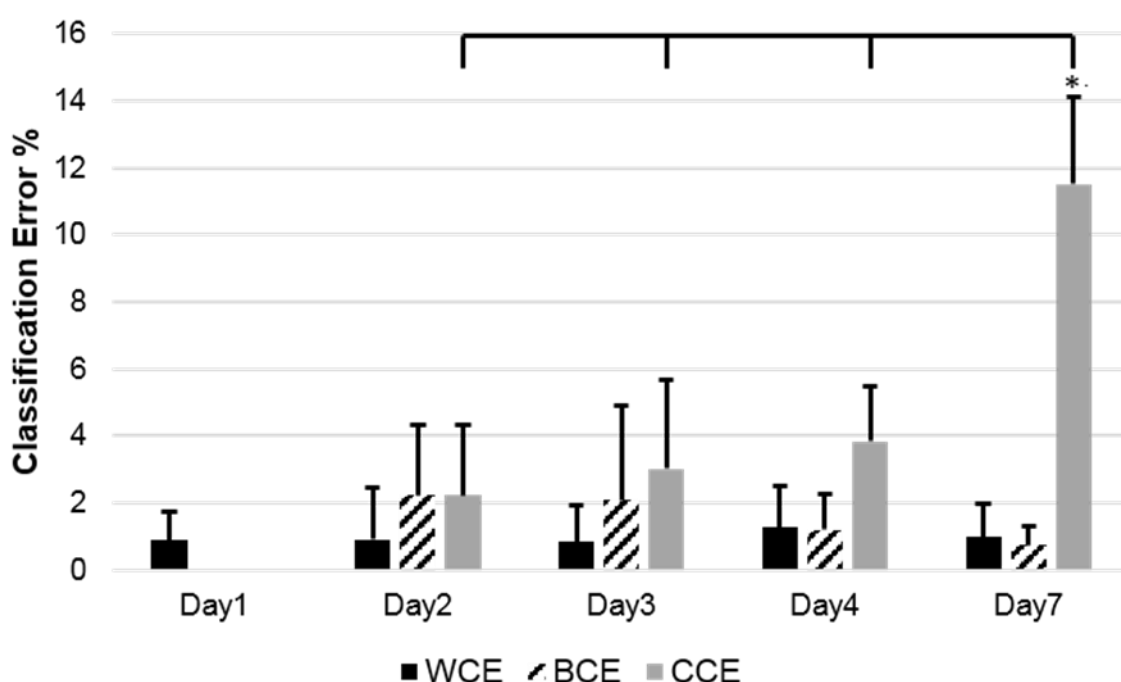
#### 18        *e) Statistics*

19 To evaluate the overall offline performance based on classification error, two-way repeated measures analysis of  
20 variance (ANOVA) with factor types (WCE, BCE, and CCE) and the day (without Day 1) was used. P-values less  
21 than 0.05 were considered significant. To investigate the suitability of Fitts' law test for the online experiment the  
22 relationship between completion time and ID was examined. The  $R^2$  coefficient of the linear model was examined  
23 to determine how the obtained data fit the computed linear model. For the overall performance based on each  
24 performance metric, two-way repeated measures analysis of variance (ANOVA) was used to quantify the  
25 difference between days (without Day 1) and sessions. P-values less than 0.05 were considered significant. Results  
26 are presented as mean  $\pm$  standard deviation.

### 27    **III. RESULTS**

#### 28        *a) Offline Results*

1 Two-way repeated ANOVA showed that classification accuracies were significantly affected by training schemes  
 2 ( $P \leq 0.01$ ) and days ( $P \leq 0.01$ ). Multiple comparison showed no significance ( $P = 0.55$ ) between average WCE  
 3 ( $0.98 \pm 0.57\%$ ) and BCE ( $1.55 \pm 1.25\%$ ). Averaged WCE and BCE were significantly ( $P \leq 0.01$ ) lower than CCE  
 4 ( $4.99 \pm 1.63\%$ ). Multiple comparisons revealed a significant difference between (Days = 2, 3, 4) and Day 7 ( $11.52$   
 5  $\pm 2.58\%$ ) in CCE. No significant difference was found between days 2,3 and 4 ( $P(2,3) = 0.86$ ,  $P(2,4) = 0.75$ ,  $P$   
 6  $(3,4) = 0.99$ ). In BCE, classification performance improved over time (BCE of day 7 is less than day 4, day 4 is  
 7 less than day 3 and so on) but found no significance between days. Figure 2 represents the offline classification  
 8 performance comparison between BCE and CCE over time.



9  
 10 **Figure 2:** Offline Classification performance comparison between WCE, BCE, and CCE over a week. Star (\*)  
 11 indicate the case where there is a significant difference.

12 Table 3 represents the confusion matrix for all classes of CCE on Day7. Higher level of misclassifications for  
 13 close hand and open hand were observed. It may be attributed to the co-activation of several muscles during  
 14 recording of these motions.

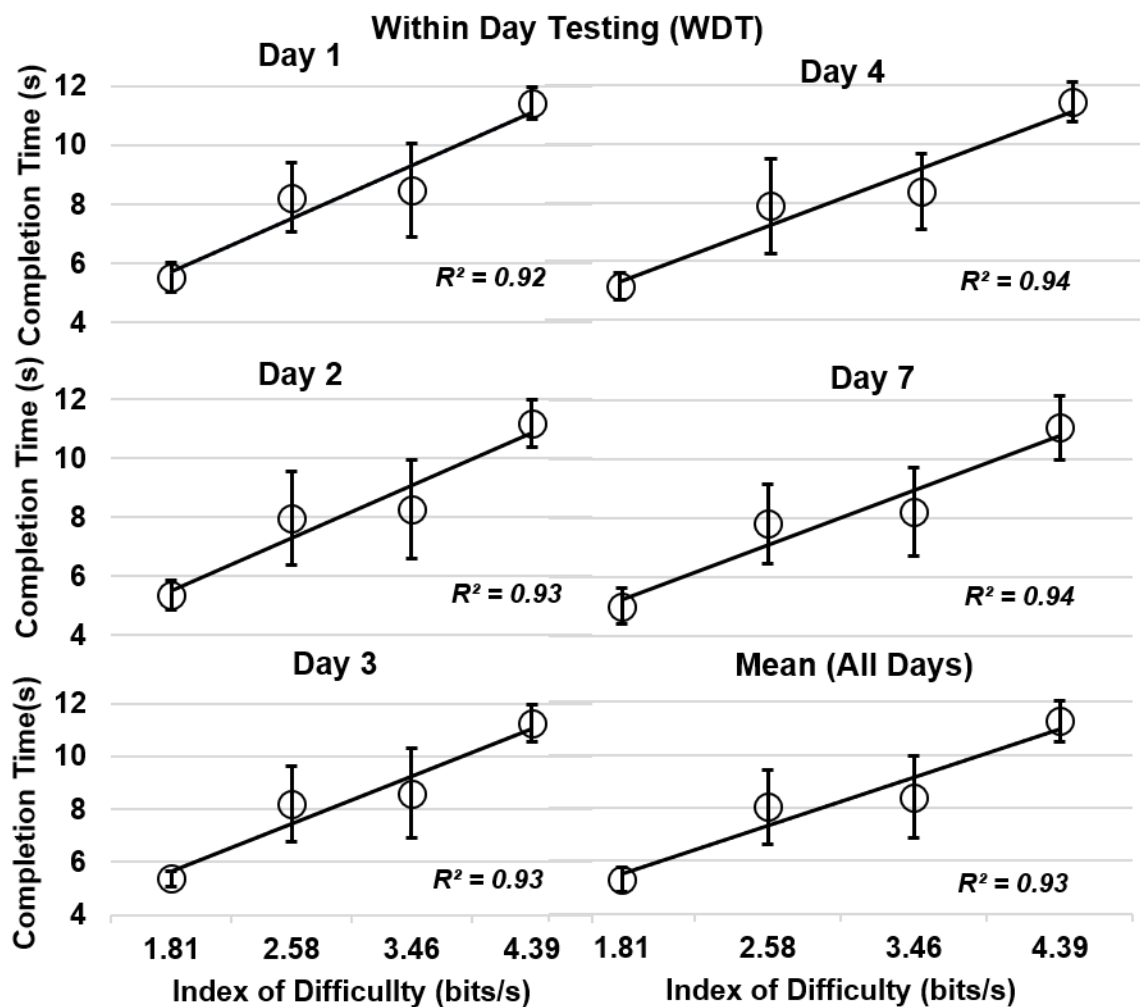
15 **Table 3:** Confusion matrix for all hand motions on Day 7 for CCE.

<b>CONFUSION MATRIX CCE (DAY 7)</b>						
<b>PREDICTED CLASS</b>						
		<i>Close Hand</i>	<i>Open Hand</i>	<i>Extend Hand</i>	<i>Flex Hand</i>	<i>Rest</i>
<i>True</i>	<i>Close Hand</i>	80.25%	19.18%	0.27%	0.08%	0.22%

<b>Open Hand</b>	17.03%	67.16%	5.17%	7.90%	2.73%
<b>Extend Hand</b>	0.84%	0.79%	97.56%	0.02%	0.80%
<b>Flex Hand</b>	0.93%	1.21%	0.02%	97.60%	0.24%
<b>Rest</b>	0.11%	0.03%	0.03%	0.00%	99.83%

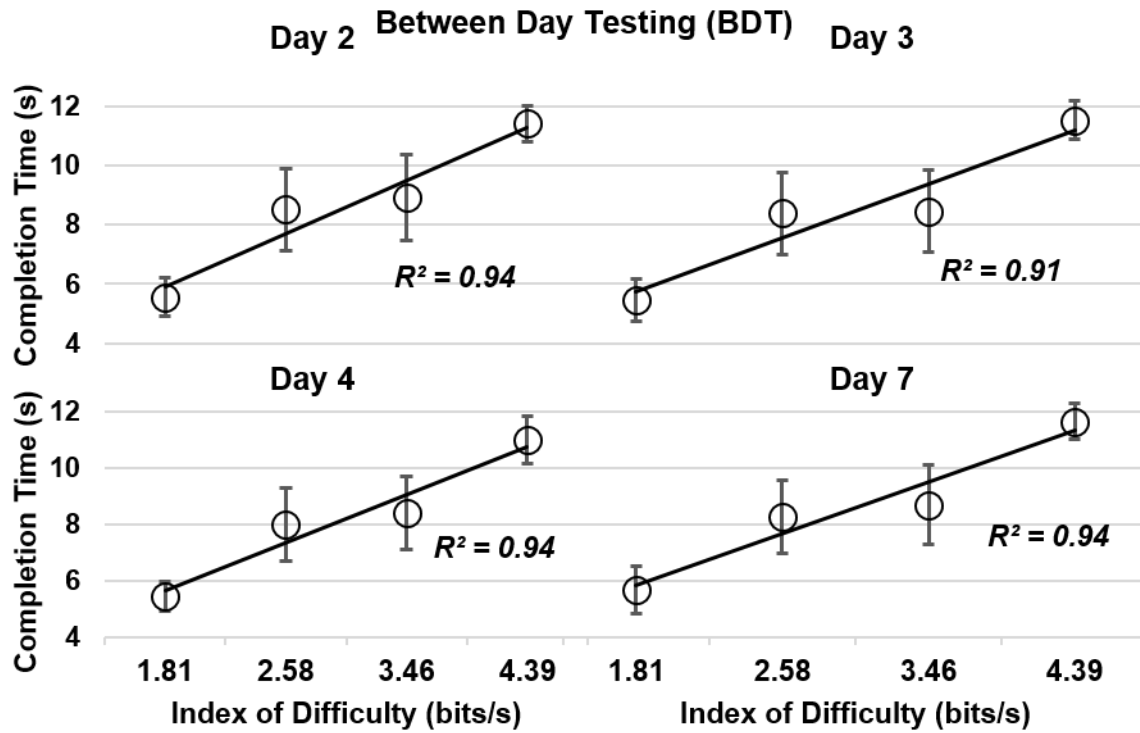
1      *b) Fitt's Law Test*

2      A strong linear relationship was found between completion time and index of difficulty for all strategies (within  
3      day testing WDT, between day testing BDT and combined days testing CDT) and days (coefficient of  
4      determination  $R^2 \geq 0.91$ ) as depicted in Figures 3 and 4. This supports the suitability of using Fitt's Law test. It  
5      was found that average completion time for all IDs in CDT was significantly better than ( $P \leq 0.01$ ) BDT and  
6      ( $P = 0.04$ ) WDT (Table 4).



7  
8

**Figure 3:** Relationship between completion time (CT) and index of difficulty for Within day testing(WDT).



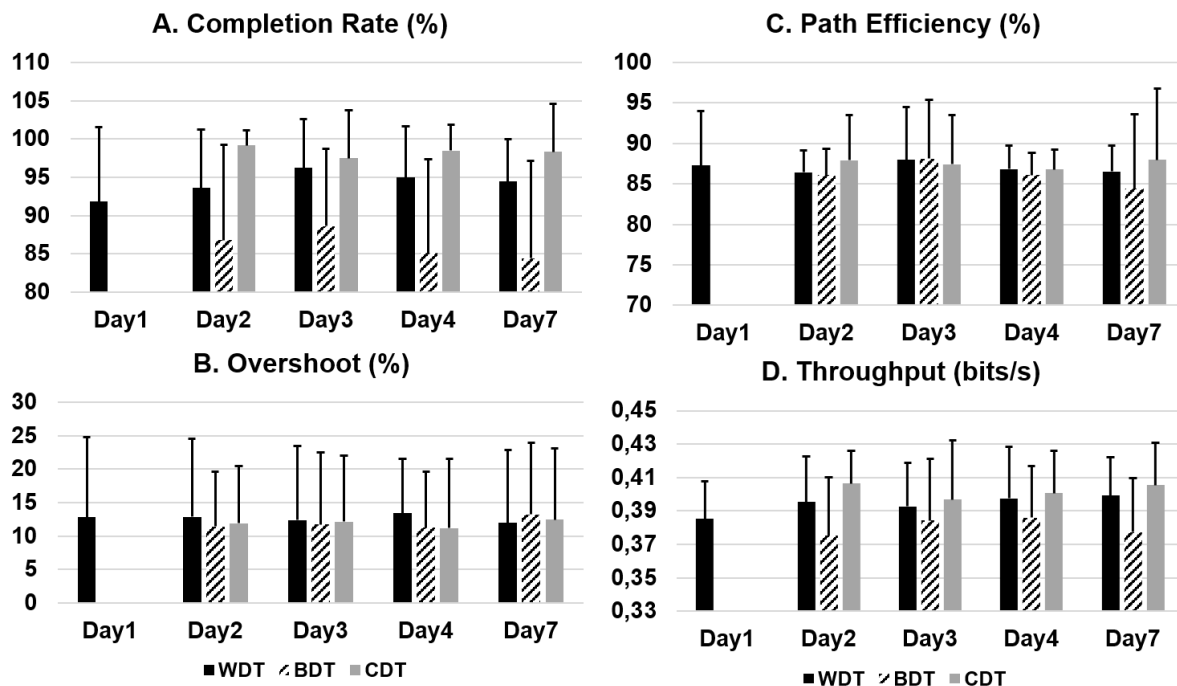
1

2 **Figure 4:** Relationship between completion time (CT) and index of difficulty for between day testing (BDT).3 **Table 4:** Average completion time and index of difficulty for BDT, WDT, and CDT.

ID	BDT	WDT	CDT
1.81	5.49±1.33	5.09±0.70	4.96±0.20
2.58	8.33±2.69	8.19±2.72	7.86±1.72
3.46	8.64±2.77	8.48±2.55	8.36±1.55
4.39	11.48±1.23	11.27±1.48	10.97±1.33

4 There was no significant difference between days for all the performance metrics in WDT, BDT and CDT (Figure

5 5). A summary of all performance metrics per session across all days is provided in Table 5.

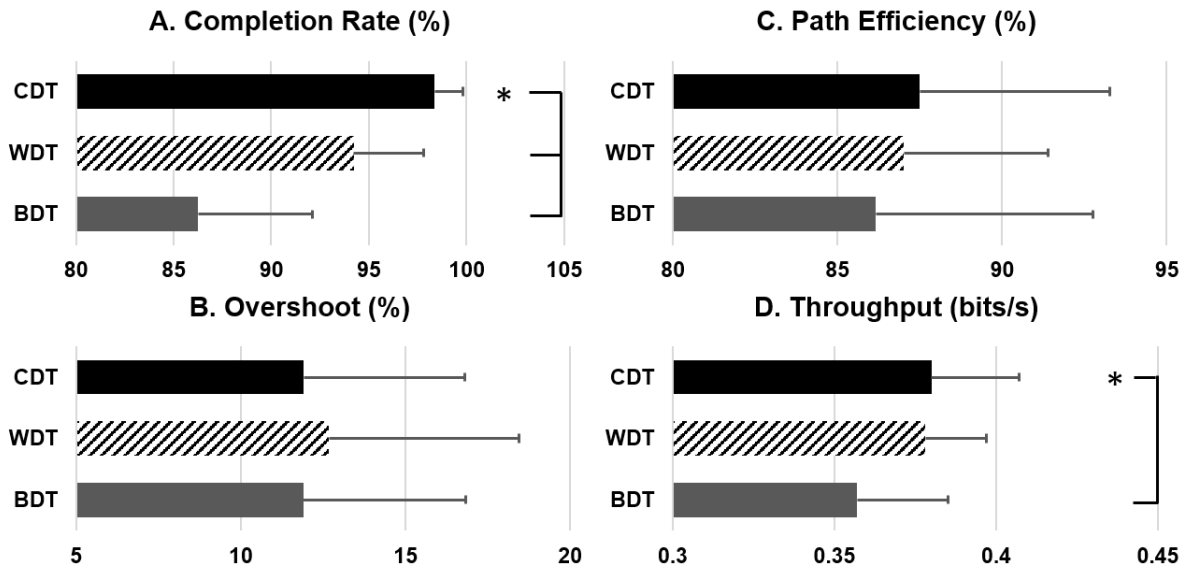


1  
2 **Figure 5:** The overall results for all the performance metrics over days (A. Completion rate (%), B. Overshoot  
3 (%), C. Path Efficiency (%), D. Throughput (bits/s)) in within day testing (WDT), Between day testing (BDT)  
4 and Combine day testing (CDT).

5 **Table 5:** WDT, BDT and CDT session wise comparison of, performance metrics. A significant difference in  
6 each session of performance metric was presented in star (\*) in Table 4.

Within-Day Testing (WDT)			
	Session 1	Session 2	Session 3
Completion rate	94.42±4.09	93.17±3.64	95.08±3.35
Overshoot	14.86±4.14 (*)	11.84±6.01	11.35±5.25
Path efficiency	86.86±1.75	87.50±2.70	86.69±2.51
Throughput	0.41±0.02(*)	0.39±0.02	0.38±0.02
Between Day Testing (BDT)			
	Session1	Session 2	Session 3
Completion rate	89.06±5.45(*)	86.56±5.53	83.13±6.50
Overshoot	14.26±4.27(*)	11.06±4.73	10.39±4.60
Path efficiency	85.55±2.37	86.78±4.61	86.18±4.89
Throughput	0.39±0.01(*)	0.39±0.01	0.36±0.02
Combined Day Testing (CDT)			
	Session 1	Session 2	Session 3
Completion rate	99.79±0.29(*)	98.85±1.22	96.45±3.69
Overshoot	14.75±4.31(*)	10.61±4.45	10.38±4.79
Path efficiency	87.03±1.31	86.93±1.01	88.55±5.03
Throughput	0.41±0.01(*)	0.40±0.01	0.38±0.02

7 When pulling the days in training-testing strategies, the overall comparison of performance metrics between  
8 WDT, BDT, and CDT is shown in Figure 6. Completion rate ( $98.37 \pm 1.47$  %) of CDT was significantly better  
9 ( $P < 0.01$ ) than BDT ( $86.25 \pm 3.46$  %) and WDT ( $94.22 \pm 2.74$  %). Throughput ( $0.40 \pm 0.03$  bits/s) of CDT was  
10 significantly better ( $P = 0.001$ ) than BDT ( $38.07 \pm 0.03$  bits/s). Path efficiency and Overshoot were not different  
11 between the strategies ( $P > 0.3$ ).



1 **Figure 6:** Performance metrics (A. Completion Rate (%), B. Overshoot (%), C. Path Efficiency (%), D.  
 2 Throughput (bits/s)) averaged across all days in CDT, WDT and BDT. Stars (\*) indicate the case where there is a  
 3 significant difference.  
 4

#### 5 **IV. DISCUSSION**

6 Historically researchers have quantified EMG PR performance by comparing classification accuracies of different  
 7 algorithms in offline settings. However recent studies have focused more on real-time evaluation in acute settings,  
 8 meaning in a single session. In this study, multiple train-test schemes were assessed over seven days in the context  
 9 of real-time usability test using a Fitt's Law approach. Evaluation of the Fitts' Law showed high  $R^2 \geq 0.92$  values  
 10 from regression plots for all days in all train-test strategies supporting the suitability of a Fitts' Law approach.

11 For the overall performance based on throughput and completion rate, two-way ANOVA revealed a significant  
 12 difference between combined day testing (CDT), within day testing (WDT) and between day testing (BDT)  
 13 (Figure 6. On average for all days, completion rate  $98.37 \pm 1.47$  %) and throughput  $(0.40 \pm 0.027$  bits/s) of CDT  
 14 was significantly better ( $P \leq 0.01$ ) than BDT and WDT. This indicates the acute behavior of the system after initial  
 15 training. The lack of difference between BDT and CDT is quite interesting and indicating a possible adaptation  
 16 of the system. Although not captured fully in this study, combining data from several days might, in fact, provide  
 17 a stable system performance. Nevertheless, the increased amount of data may also require deeper network in order  
 18 to generalize well. This observation has an important implication on real-world myoelectric based on PR, which  
 19 provides the possibility of reducing the level of system recalibration for prostheses training based on data from  
 20 longer periods of time.

21 The slopes of the regression lines indicate differences between train-test strategies in terms of completion time  
 22 (Table 3). Performance descriptors and task requirements, which involve the acquisition of target location through

1 control of cursor are a close analog to previously reported real-time studies. Path efficiency describes the system  
2 quality of control was recorded ( $87.02 \pm 4.38 \%$ ), higher than reported in previous studies  $73.1\% \pm 2.8\%$ ,  $77.09$   
3  $\pm 0.89 \%$ ,  $71.5 \pm 3.8\%$  [33-35]. Similarly, lower value of overshoot ( $0.12 \pm 0.06 \%$ ) compared to ( $0.45 \pm 0.07\%$ )  
4 in [33] and ( $0.56 \pm 0.04\%$ ) in [35] indicate that users were more effective on stopping at the target. Subjects were  
5 able to maintain a similar degree of path efficiency and overshoot across days over time. Within-day sessions,  
6 however, showed significant differences between them. This indicates the changes in EMG characteristics that  
7 may occur within short time periods, supporting the above arguments about the need for capturing an increased  
8 amount of data.

9 Offline analysis showed a different trend most probably due to the difference in the training strategies. For  
10 example WCE was computed using two-fold validation providing half sample size compared to BCE and CCE.  
11 Furthermore, offline CCE did not include data from the present day. Nevertheless, the effect is more prominent  
12 between day four and seven. This suggests that, although training strategies for short-time scenarios produce low  
13 errors, it is not a useful metric to capture the variabilities in human hand movements. A way to solve this is by  
14 encouraging concatenation of training data of hundreds of days to capture the natural variabilities in movement  
15 execution. However, with such large training size standard machine learning and features may not cope and thus  
16 we encourage the use of deep learning networks for future PR control schemes.

#### 17 **Limitations:**

18 The ratio between distance and target width determines the ID for each target and the combination used in this  
19 study yielded only four unique ID instead of six, resulting in the larger spread of ID values. In the future, we will  
20 consider targets positions that will produce unique IDs for improved resolution in the level of challenge of the  
21 task. The proposed framework evaluated training schemes based on their ability to predict hand motions  
22 (classification, in PR based approaches) using constant speed. Thus, the outcome of such a study may be different  
23 with the introduction of proportional control where users may be able to update different in terms of speed. The  
24 number of classes chosen for this study is only a limitation from the offline analysis point of view where a higher  
25 number of classes have been used in the past [30,32]. However, for the online evaluation, 2 –DOF is typically  
26 used in the literature. While the results of this study have shown a significant difference in training-testing  
27 strategies, it is just a step towards quantification of robustness. Clinical experiments are ongoing with amputees  
28 using real prostheses.

## 29 **V. CONCLUSION**

1 In this study, real-time myoelectric control of different training-testing schemes for four functional motions of  
2 hand was evaluated using Fitts' law. Our results have shown that time has an effect on the robustness of real-time  
3 PR based myoelectric control. Specifically, increasing the training size by pulling data from several days tend to  
4 improve real-time performance. A feature that is not captured using offline classification error. This is relevant  
5 for intuitive control of prostheses and future usability tests, where we recommend multiple sessions/days as the  
6 acute results may not be the true picture of the performance of the system.

## 7 **LIST OF ABBREVIATIONS**

8 PR: Pattern recognition; ANN: Artificial neural networks; WDT: Within-day testing; BDT: Between-day testing;  
9 CDT: Combined-day Testing; EMG: Electromyogram; TAC: Target achievement test; WCE: Within-day  
10 classification error; BCE: Between-day classification error; CCE: Combined-day classification error; MYO: Myo  
11 armband; WL: Waveform length; MAV: Mean absolute value; WAMP: Willison amplitude; CARD: Cardinality;  
12 SSC: Slope sign change; ZC: Zero crossings; ID: Index of difficulty; ANOVA: Analysis of variance.

## 13 **DECLARATIONS**

### 14 **ETHICS APPROVAL AND CONSENT TO PARTICIPATE**

15 The study was approved by the local ethical committee of the region of Northern Jutland (approval no: N-  
16 20160021), Denmark. The subjects participated in the study provided their written informed consent prior to  
17 enrolment.

### 18 **CONSENT OF PUBLICATION**

19 Not applicable.

### 20 **AVAILABILITY OF DATA AND MATERIALS**

21 The datasets generated during and/or analyzed during the current study are available from the corresponding  
22 author on reasonable request.

### 23 **COMPETING INTERESTS**

24 The authors declare that they have no competing interests. The authors declare that the research was conducted in  
25 the absence of any commercial or financial relationships that could be construed as a potential conflict of interest.

### 26 **FUNDING**



1 The project was supported by Higher Education Commission of Pakistan, under the Faculty Development  
2 Program (FDP-REF1DEC2014) administered through National University of Sciences and Technology under  
3 contract 0972/F008/HRD/FDP-14/S/Asim.

#### 4 **AUTHORS CONTRIBUTIONS**

5 AW and ENK designed the study concept, experimental protocol and performed data acquisition. They analyzed  
6 the data, drafted and completed the manuscript. IM developed the GUI for real-time testing and assisted in data  
7 collection. KE, WJ contributed to data analysis and provided critical revision of the manuscript. All authors read  
8 and approved the final manuscript.

#### 9 **ACKNOWLEDGEMENTS**

10 We would like to thank all the subjects participated in our study.

#### 11 **AUTHORS' INFORMATION**

12 <sup>1</sup>SMI, Department of Health Science and Technology, Aalborg University, Aalborg, Denmark. <sup>2</sup>SMME, National  
13 University of Sciences and Technology, Islamabad, Pakistan. <sup>3</sup>Institute of Biomedical Engineering, University of  
14 New Brunswick, Fredericton, Canada. <sup>4</sup>Center for Robotics Research, Department of Informatics, King's College  
15 London, London, United Kingdom.

#### 16 **REFERENCES**

- 17 [1] Dillingham TR, Pezzin LE, Mackenzie EJ. Limb Amputation and Limb Deficiency: epidemiology and Recent  
18 Trends in the United States. *Southern Medical Journal* 2002; 95:875-83
- 19 [2] Battye CK, Nightingale A, Whillis J. The use of myo-electric currents in the operation of prostheses, *J. Bone*  
20 *Joint Surg. Br.* 37 1955; 37-B(3):506–10.
- 21 [3] Scheme E, Englehart K. Electromyogram pattern recognition for the control of powered upper limb prostheses:  
22 state-of-the-art and challenges for clinical use. *J Rehabil Res Dev* 2011; 48: 643-659;  
23 10.1682/JRRD.2010.09.0177.
- 24 [4] Toledo C, Simon A, Munoz R, Vera A, Leija L, Hargrove L: A comparison of direct and pattern recognition  
25 control for a two degree-of-freedom above elbow virtual prosthesis. *EMBC Annual International Conference of*  
26 *the IEEE.* 2012: 4332–35.

- 1 [5] Kamavuako EN, Scheme EJ, Englehart KB. Wrist torque estimation during simultaneous and continuously  
2 changing movements: surface versus untargeted intramuscular EMG. *J Neurophysiol* 2013; 11: 2658–65.  
3 10.1152/jn.00086.2013.
- 4 [6] Nielsen J, Holmgaard S, Jiang N, Englehart K, Farina D, Parker PP. Simultaneous and proportional force  
5 estimation for multifunction myoelectric prostheses using mirrored bilateral training. *IEEE Trans Biomed Eng.*  
6 2011; 58: 681–8. 10.1109/TBME.2010.2068298.
- 7 [7] Jiang N, Englehart KB, Parker P. Extracting simultaneous and proportional neural control information for  
8 multiple degree of freedom prostheses from the surface electromyographic signal. *IEEE Trans Biomed Eng.* 2009;  
9 56:1070–80. 10.1109/TBME.2008.2007967.
- 10 [8] Kamavuako EN, Englehart KB, Jensen W, Farina D. Simultaneous and proportional force estimation in  
11 multiple degrees of freedom from intramuscular EMG. *IEEE Trans Biomed Eng.* 2012; 59:1804–07.  
12 10.1109/TBME.2012.2197210.
- 13 [9] Phinyomark A, Quaine F, Charbonnier S, Serviere C, Bernard FT, Laurillau Y. EMG feature evaluation for  
14 improving myoelectric pattern recognition robustness. *Expert Syst Appl.* 2013;40(12):4832-40.  
15 10.1016/j.eswa.2013.02.023.
- 16 [10] Phinyomark A, Phukpattaranont P, Limsakul C. Feature reduction and selection for EMG signal  
17 classification. *Expert Syst Appl* 2012; 39(8); 7420–31. 10.1016/j.eswa.2012.01.102.
- 18 [11] Hargrove L, Englehart K, Hudgins B. A training strategy to reduce classification degradation due to electrode  
19 displacements in pattern recognition based myoelectric control. *Biomed Signal Process Contr.* 2008;3(2):175-180.  
20 10.1016/j.bspc.2007.11.005.
- 21 [12] Fougner A, Scheme E, Chan AD, Englehart K, Stavdahl O. Resolving the limb position effect in myoelectric  
22 pattern recognition. *IEEE Trans Neural Syst. Rehabil. Eng.* 2011; 19(6): 644–651.  
23 10.1109/TNSRE.2011.2163529.
- 24 [13] Scheme E, Fougner A, Stavdahl O, Chan AD, Englehart K. Examining the adverse effects of limb position  
25 on pattern recognition based myoelectric control. In 32nd Annual International Conference of the IEEE Eng Med  
26 Biol Soc. 2010:6337-40. 10.1109/IEMBS.2010.5627638.

- 1 [14] Bellingegni A D, Gruppioni E, Colazzo1 G, Davalli A, Sacchetti R, Guglielmelli E and Zollo L. NLR, MLP,  
2 SVM, and LDA: a comparative analysis on EMG data from people with trans-radial amputation. *J Neuroeng*  
3 *Rehabil.* 2017 14;14(1):82 pp. 2-16.
- 4 [15] Waris A, Niazi IK, Jamil M, Englehart K, Jensen W, Kamavuako EN. Multiday Evaluation of Techniques  
5 for EMG Based Classification of Hand Motions. *IEEE J. Biomed. Health Inform.*
- 6 [16] Ortiz-Catalan M, Brånemark R, Håkansson B. BioPatRec: a modular research platform for the control of  
7 artificial limbs based on pattern recognition algorithms. *Source Code Biol. Med* 2013. 8:11. 10.1186/1751-0473-  
8 8-11
- 9 [17] Englehart K, Hudgins B. A robust, real-time control scheme for multifunction myoelectric control. *Biomed*  
10 *Eng, IEEE Trans on Biomed Eng.* 2003; 50(7):848–854. 10.1109/TBME.2003.813539.
- 11 [18] Lock B, Englehart K, Hudgins. Real-Time myoelectric control in a virtual environment to relate usability vs.  
12 Accuracy. In *Myoelectric Controls Symp.* Fredericton NB Canada 2005.
- 13 [19] Hargrove L, Losier Y, Lock b, Englehart K, Hudgins B. A real-time pattern recognition based myoelectric  
14 control usability study imlemented in a virtual environment. in *Proc. IEEE Int Eng Med Biol Soc Conf Aug. 2007:*  
15 4842–45. 10.1109/IEMBS.2007.4353424.
- 16 [20] Kuiken T, Guanglin L, Lock B, Lipschutz R, Miller L, Stubblefield K, Englehart K. Targeted muscle  
17 reinnervation for realtime myoelectric control of multifunction artificial arms. *J Am Med Assoc.* 2009;  
18 301(6):619–28. 10.1001/jama.2009.116.
- 19 [21] Fitts P. The information capacity of the human motor system in controlling the amplitude of movement. *J*  
20 *Exp Psychol.* 1954; 47(6):381–91. 10.1037/h0055392.
- 21 [22] Shannon C. Mathematical theory of communication. *Bell Syst Tech J.* 1948;27: 623–56.
- 22 [23] Choi C, Micera S, Carpaneto J, and Kim J. Development and quantitative performance evaluation of a  
23 noninvasive EMG computer interface. *IEEE Trans Biomed Eng* 2009;56(1):188–91.  
24 10.1109/TBME.2008.2005950.
- 25 [24] Rosenberg R. The biofeedback pointer: EMG control of a two-dimensional pointer, *Wearable Computers*  
26 *Digest of Papers. Second Int Symp on 19-20 Oct. 1998:* 162–63. 10.1109/ISWC.1998.729546.
- 27 [25] Kuiken TA, Turner K, Soltys N, Dumanian G. First clinical fitting of an individual after bilateral TMR with  
28 intuitive pattern recognition control. *Myoelectric Controls Symposium (Fredericton, NB).* 2014

- 1 [26] Matrone GC, Cipriani C, Carrozza MC, Magenes G. Real-time myoelectric control of a multi-fingered hand  
2 prosthesis using principal components analysis. *J Neuroeng Rehabil.* 2012; 9:40. 10.1186/1743-0003-9-40
- 3 [27] Smith LH, Kuiken TA, Hargrove LJ. Real-time simultaneous and proportional Myoelectric control using  
4 intramuscular EMG. *J. Neural Eng.* 2014; 11:066013. 10.1088/1741-2560/11/6/066013.
- 5 [28] Kamavuako EN, Scheme E and Englehart KB. Combined surface and intramuscular emg for improved real-  
6 time myoelectric control performance. *Biomed. Signal Process Control.* 2014;10:102-107.  
7 10.1016/j.bspc.2014.01.007
- 8 [29] He J, Zhang D, Jiang N, Sheng X, Farina D, Zhu X. User adaptation in long-term, open-loop myoelectric  
9 training: Implications for EMG pattern recognition in prosthesis control. *J. Neural Eng.* 2015;12(4):046005.  
10 10.1088/1741-2560/12/4/046005.
- 11 [30] Jain S, Singhal G, Smith RJ, Kaliki R, Thakor N. Improving long term myoelectric decoding, using an  
12 adaptive classifier with label correction. in *Proc. 4th IEEE/RAS-EMBS Int Conf Biomed. Robot Biomechanics.*  
13 2012:532-537. 10.1109/BioRob.2012.6290901.
- 14 [31] Kaufmann P, Englehart K, Platzner M. Fluctuating EMG signals: Investigating long-term effects of pattern  
15 matching algorithms. in *Proc. Annu. Int. Conf. IEEE Eng. Med. Biol. Soc.* 2010:6357–6360.  
16 10.1109/IEMBS.2010.5627288.
- 17 [32] Waris A, Niazi IK, Jamil M, Gilani O, Englehart K, Jensen W, Shafique M, Kamvuako EN. The effect of  
18 time on EMG classification of hand motions in able and transradial amputees. *J Electromyography Kinesiol.* 2018;  
19 40:72-80. 10.1016/j.jelekin.2018.04.004.
- 20 [33] Smith LH, Kuiken TA, Hargrove LJ. Evaluation of linear regression simultaneous myoelectric control using  
21 intramuscular EMG. *IEEE Trans Biomed Eng.* 2016; 63(4):737-746. 10.1109/TBME.2015.2469741.
- 22 [34] Kamavuako EN, Scheme EJ, Englehart KB. On the usability of intramuscular EMG for prosthetic control:  
23 a Fitts' law approach. *J. Electromyography Kinesiol.* 2014; 24:770-7. 10.1016/j.jelekin.2014.06.009.
- 24 [35] Scheme E, Englehart K. Validation of a selective ensemble-based classification scheme for myoelectric  
25 control using a three-dimensional Fitts' law test. *IEEE Trans. Neural Syst. Rehabil.* 2012; 21(4):616-23.  
26 10.1109/TNSRE.2012.2226189.
- 27 [36] Boyali A, Hashimoto N. Spectral collaborative representation based classification for hand gestures  
28 recognition on electromyography signals. *Biomed. Signal Process. Control.* 2016; 24:11-18.  
29 10.1016/j.bspc.2015.09.001
- 30 [37] Benatti S, Casamassima F, Milosevic B, Farella E, Schönle P, Fateh S, Burger T, Huang Q, Benini LA  
31 versatile embedded platform for EMG acquisition and gesture recognition. *IEEE trans. on biomedical circuits and*  
32 *systems.* 2015;9(5):620-30. 10.1109/TBCAS.2015.2476555.
- 33 [38] Kamavuako EN, Waris A, Mendez I, Englehart K. Patient-specific optimum motions: a need for mind shift  
34 in myoelectric control of prostheses? *Myoelectric Control Symposium MEC 2017.*

- 1 [39] Gusman J, Mastinu E, Ortiz-Catalan M. Evaluation of Computer-Based Target Achievement Tests for  
2 Myoelectric Control. *IEEE Journal of Translational Engineering in Health and Medicine*. 2017; 5:1-10.  
3 10.1109/JTEHM.2017.2776925.
- 4 [40] Wurth SM, Hargrove LJ. A real-time comparison between direct control, sequential pattern recognition  
5 control and simultaneous pattern recognition control using a Fitts' law style assessment procedure. *Journal of*  
6 *NeuroEngineering and Rehabilitation*. 2014; 11:91. 10.1186/1743-0003-11-91.
- 7 [41] Williams M, Kirsch R, Evaluation of head orientation and neck muscle EMG signals as command inputs to  
8 a human-computer interface for individuals with high tetraplegia, *IEEE Trans. Neural Syst. Rehabil. Eng.* 2008;  
9 16(5):485-496. 10.1109/TNSRE.2008.2006216.
- 10 [42] Simon AM, Hargrove LJ, Lock BA, Kuiken TA. Target achievement control test: evaluating real-time  
11 myoelectric pattern-recognition control of multi- functional upper-limb prostheses. *J. Rehabil. Res. Dev.* 2011;  
12 48(6):619-27.

13

14

15

16

17

18

19

20

21

22

23

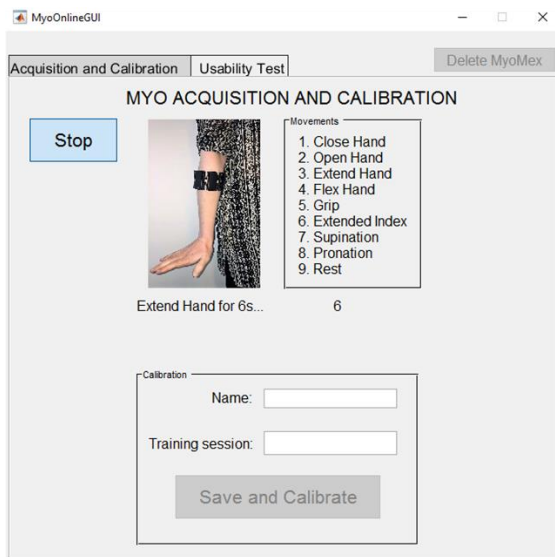
24

25

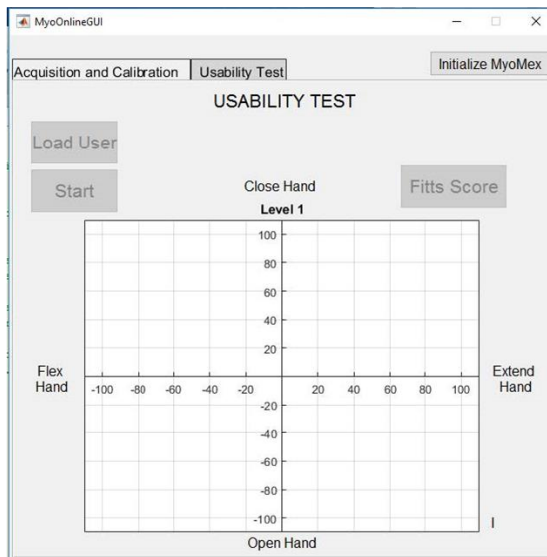
Figure 1



(a)



(b)



(c)

1

2 **Figure 1.** Experiment setup with (a) number of motions for which data was recorded (b) showed the GUI for off-  
 3 line training and (c) for real-time testing.

4

5

6

7

8

9

10

11

12

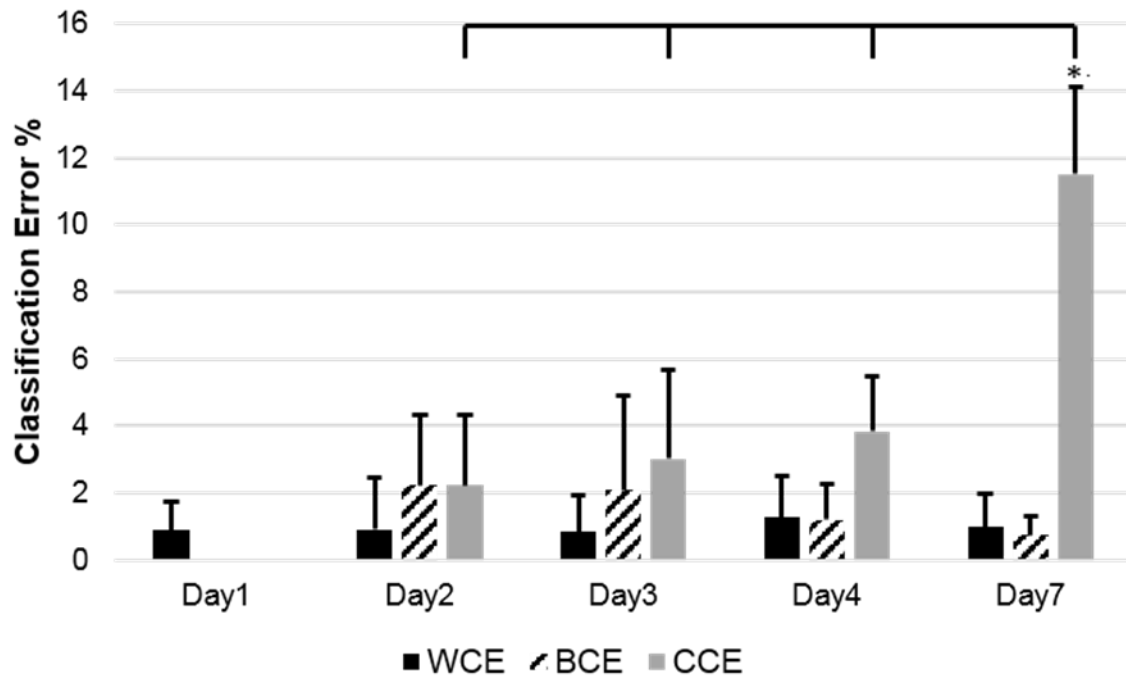
13

14

15

1

Figure 2:



2

3 **Figure 2:** Offline Classification performance comparison between WCE, BCE, and CCE over a week. Star (\*)  
 4 indicate the case where there is a significant difference.  
 5

6

7

8

9

10

11

12

13

14

15

16

17

18

19

1  
2  
3  
4  
5  
6  
7  
8  
9  
10  
11  
12  
13

Figure 3:

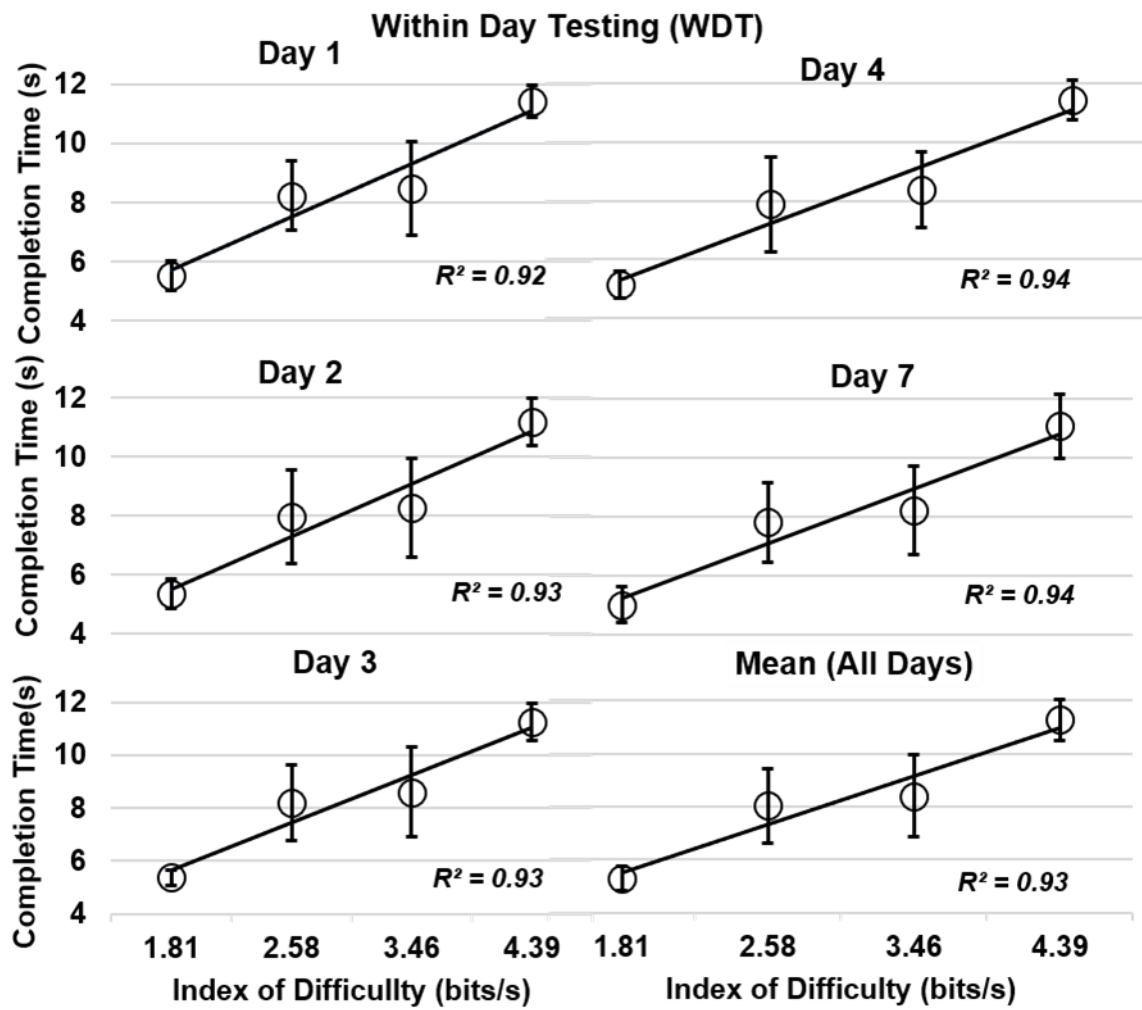


Figure 3: Relationship between completion time (CT) and index of difficulty for Within day testing(WDT).



1  
2  
3  
4  
5  
6  
7  
8  
9  
10  
11  
12  
13  
14  
15  
16  
17

Figure 4:

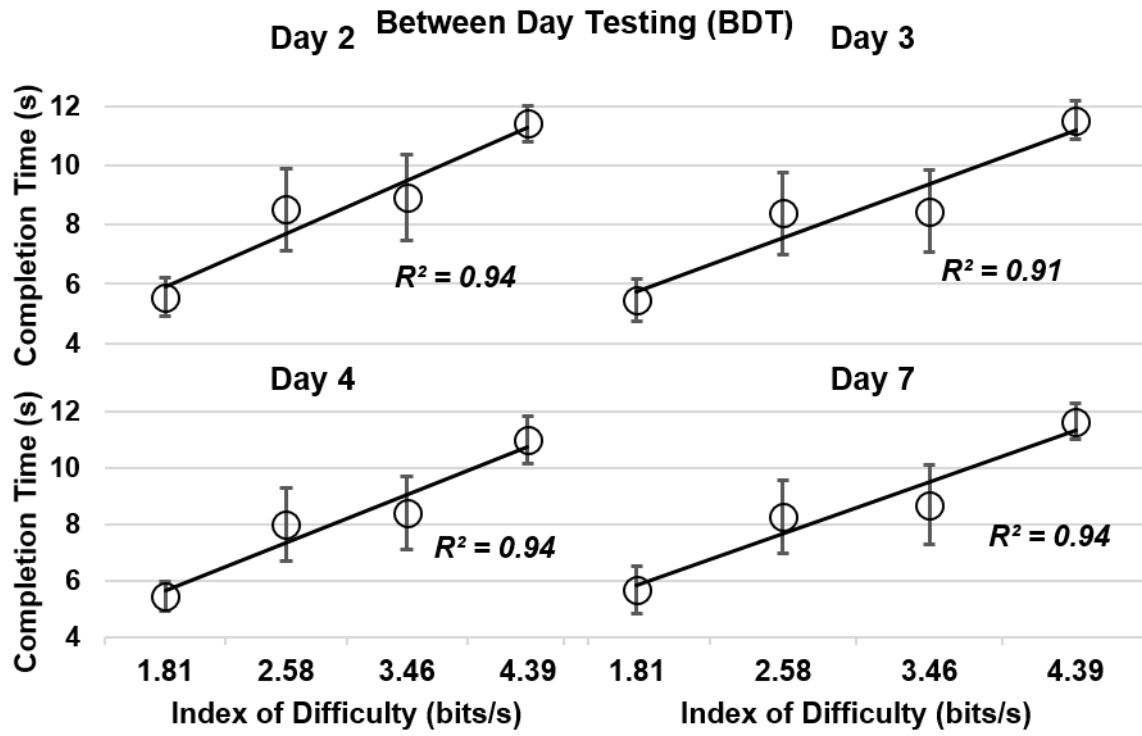


Figure 4: Relationship between completion time (CT) and index of difficulty for between day testing (BDT).

1  
2  
3  
4  
5  
6  
7  
8  
9  
10  
11  
12  
13  
14  
15  
16  
17  
18  
19

Figure 5:

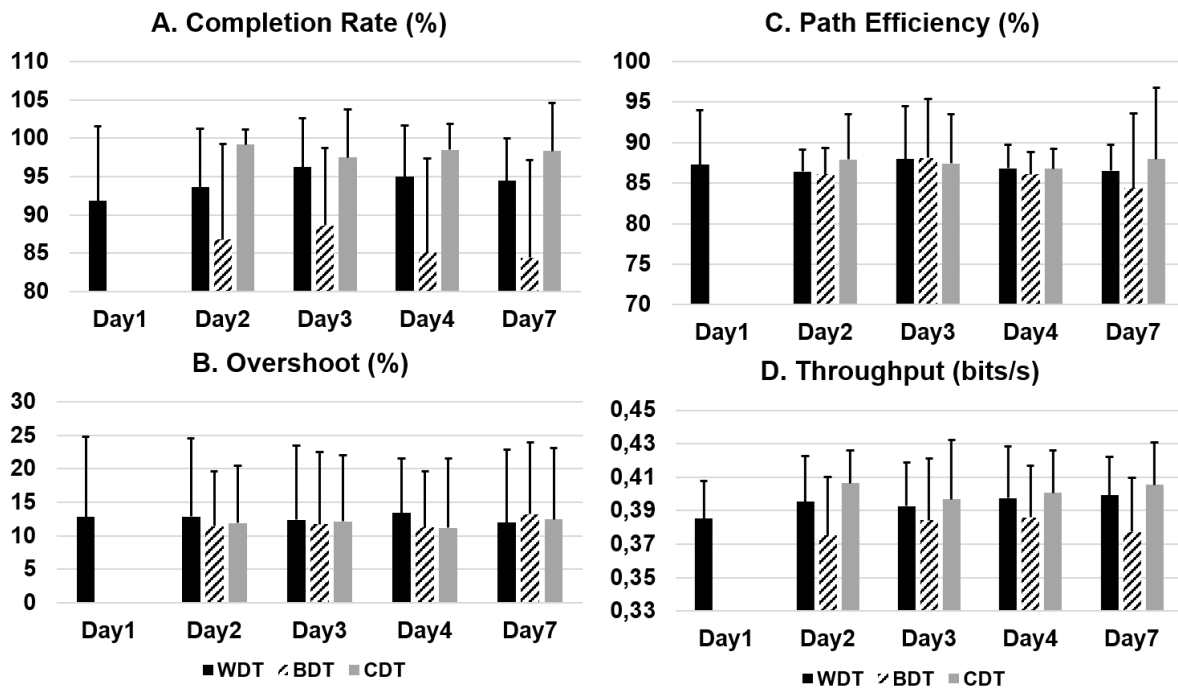


Figure 5: The overall results for all the performance metrics over days (A. Completion rate (%), B. Overshoot (%), C. Path Efficiency (%), D. Throughput (bits/s)) in within day testing (WDT), Between day testing (BDT) and Combine day testing (CDT).

1  
2  
3  
4  
5  
6  
7  
8  
9  
10  
11  
12

Figure 6:

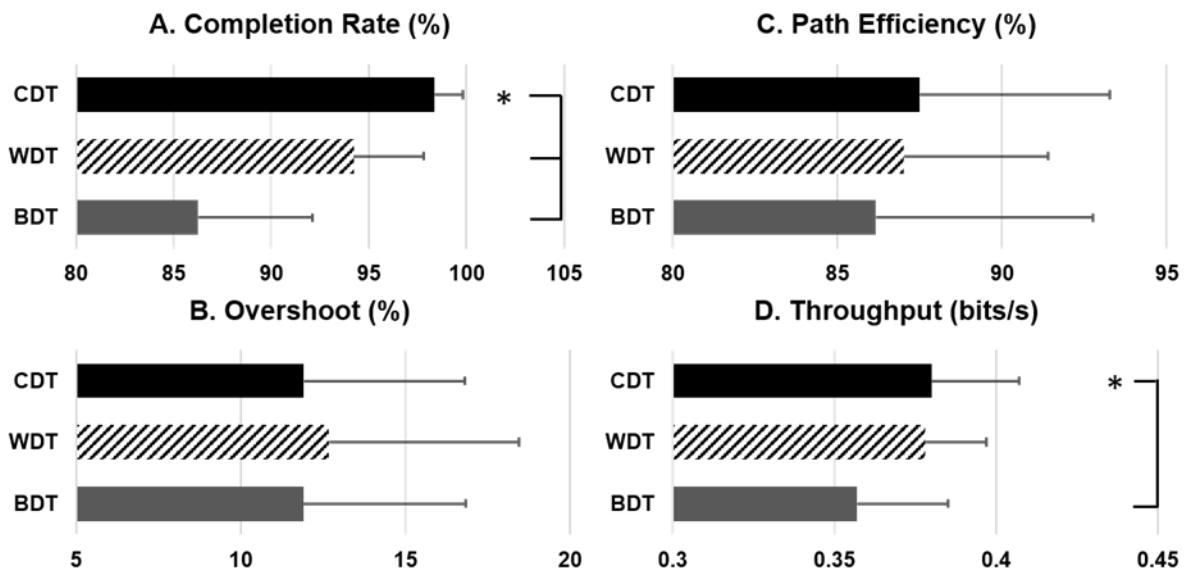


Figure 6: Performance metrics (A. Completion Rate (%), B. Overshoot (%), C. Path Efficiency (%), D. Throughput (bits/s)) averaged across all days in CDT, WDT and BDT. Stars (\*) indicate case where there is a significant difference.