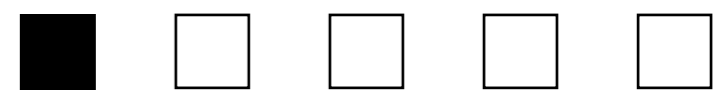
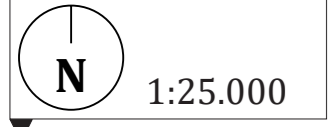


AALBORG EAST

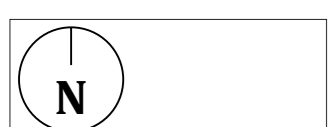


GR. 4

Alicja Bilka
 Frederik Korsgaard Wommelsdorff
 Louise Storgaard Nielsen
 Magnus Kalf Hansen
 Sina Azmoun



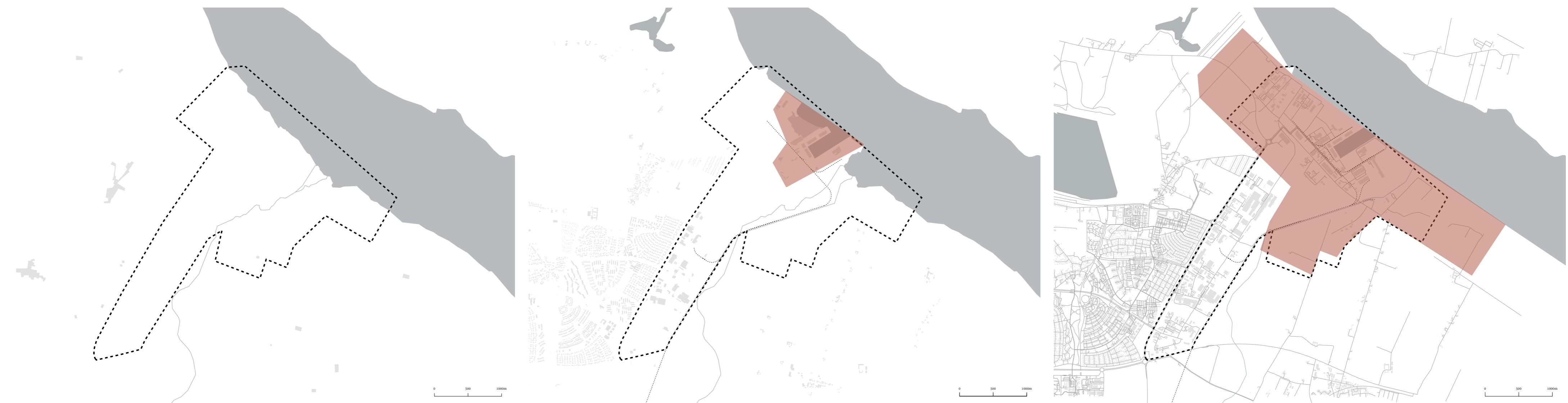
CONTEXTUAL APPRAISAL



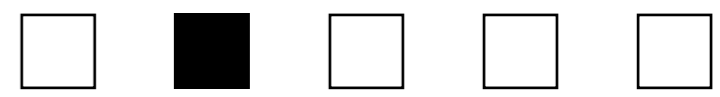
1842-1899

1980-2001

DEVELOPMENT PLAN



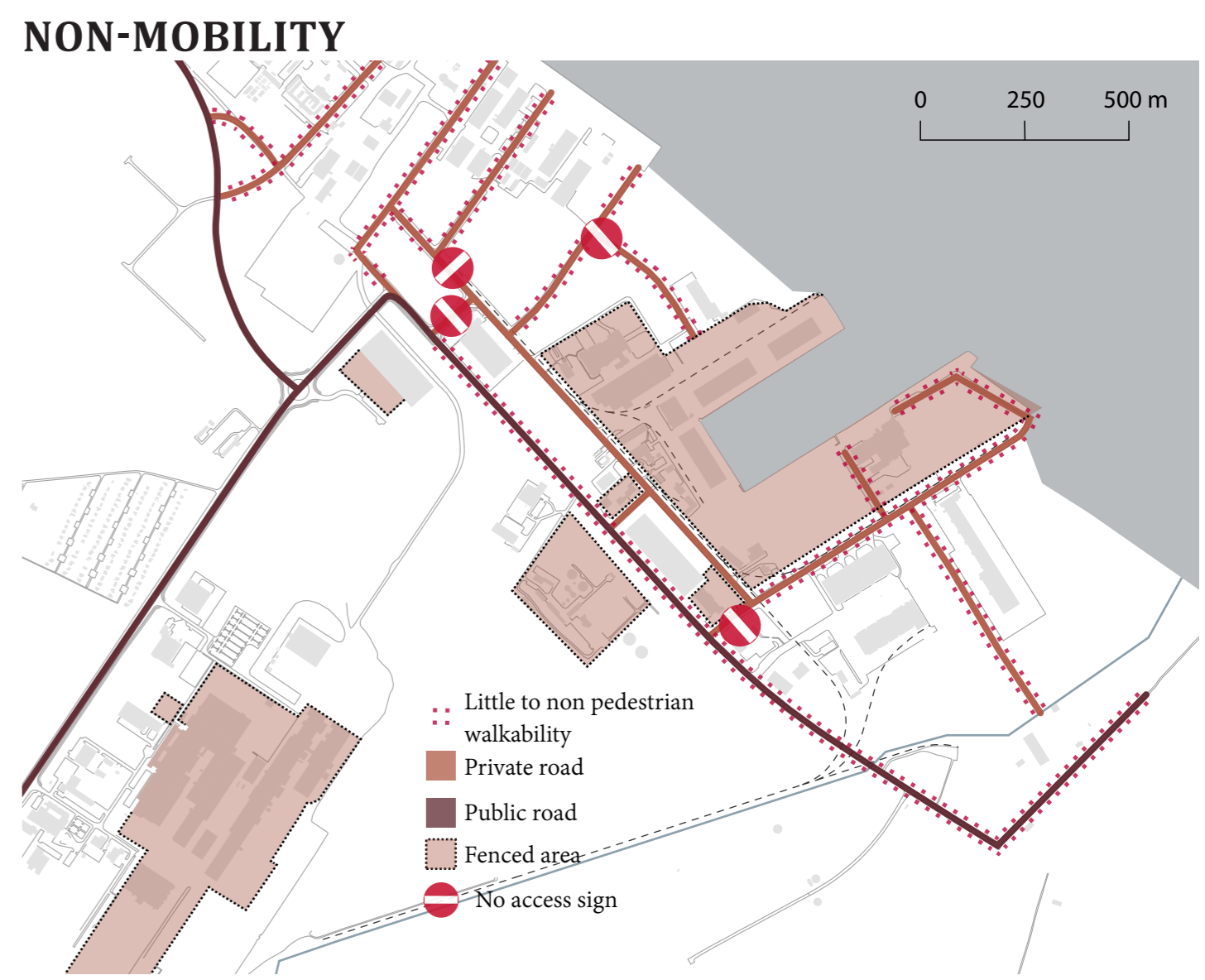
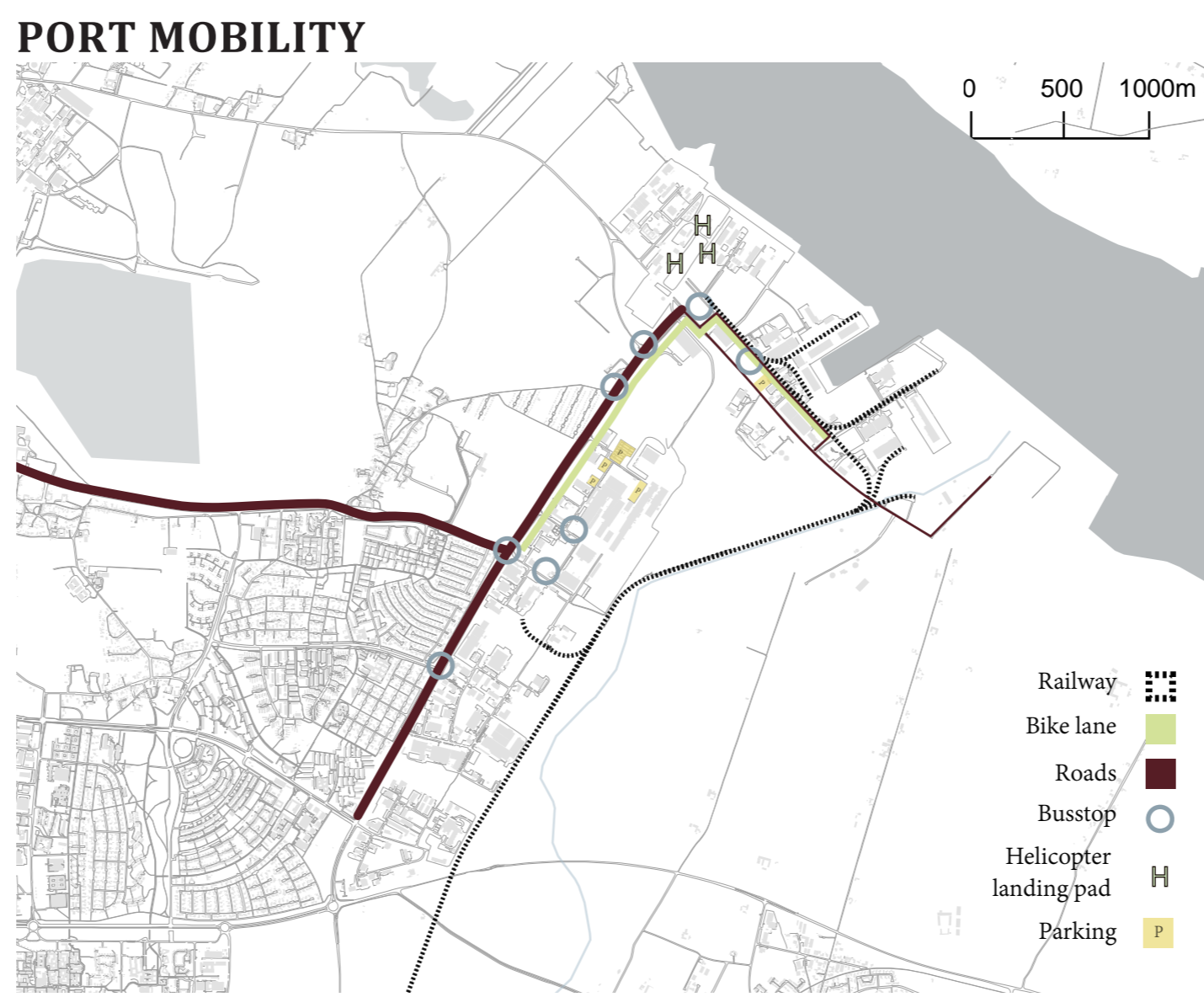
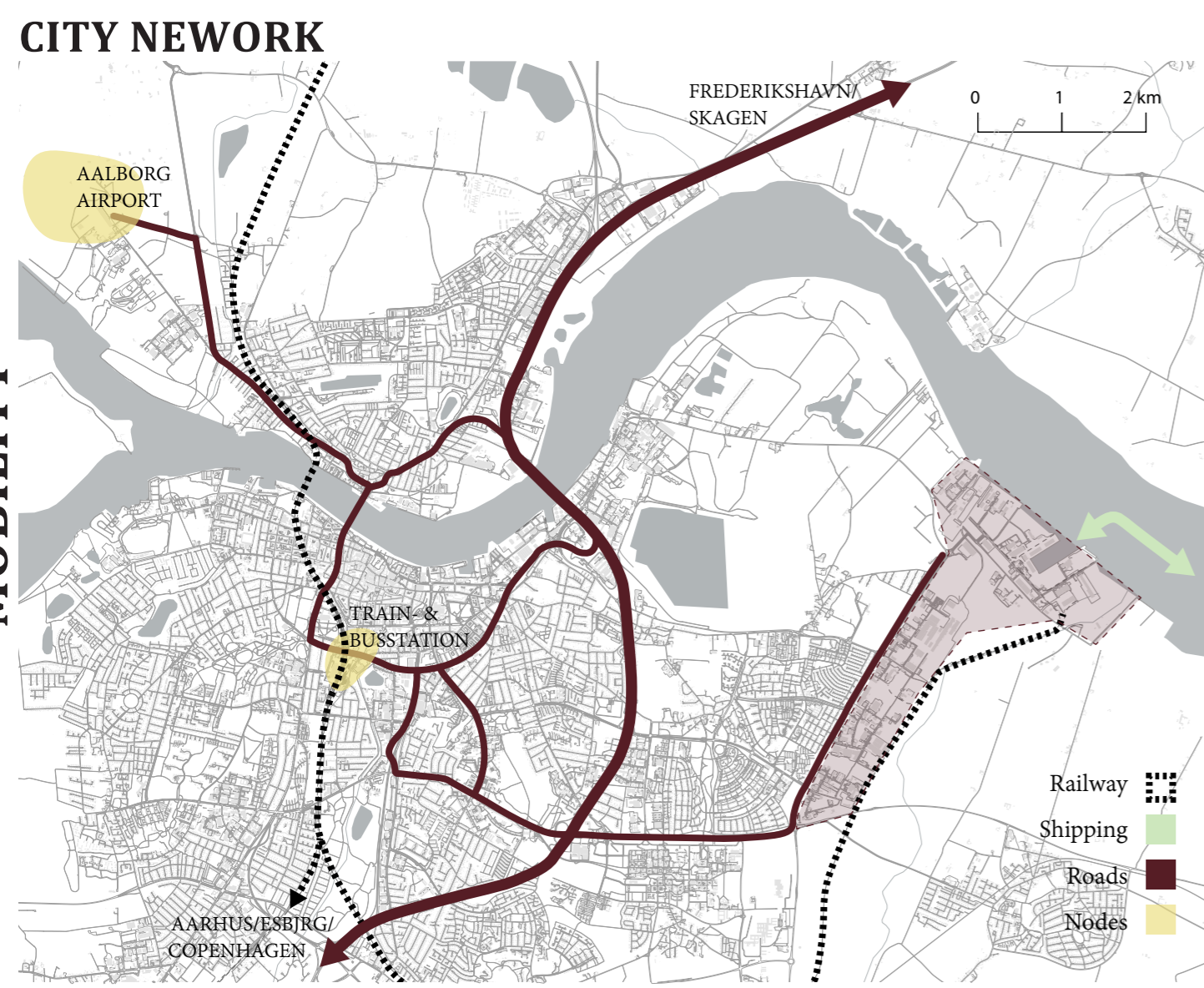
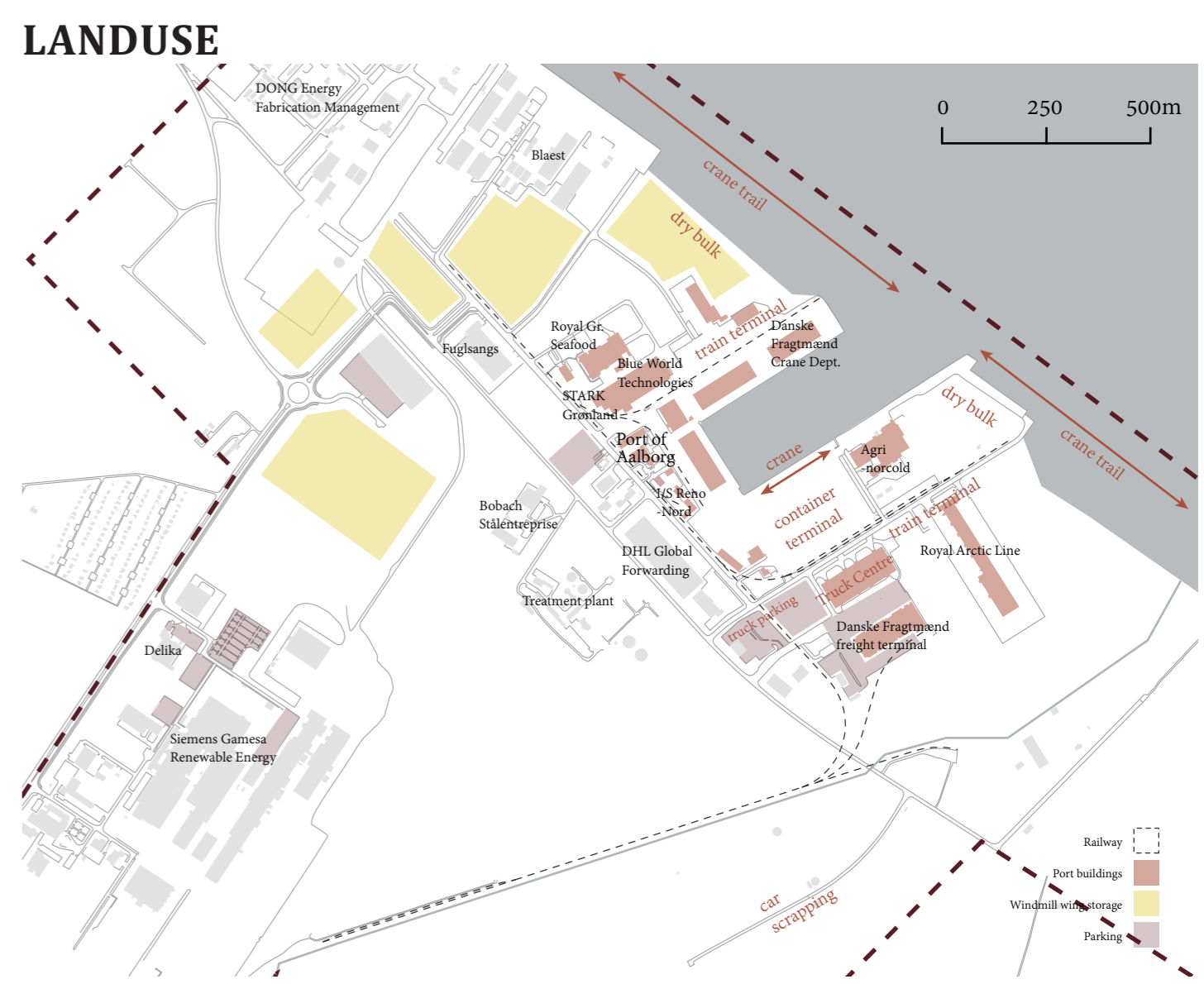
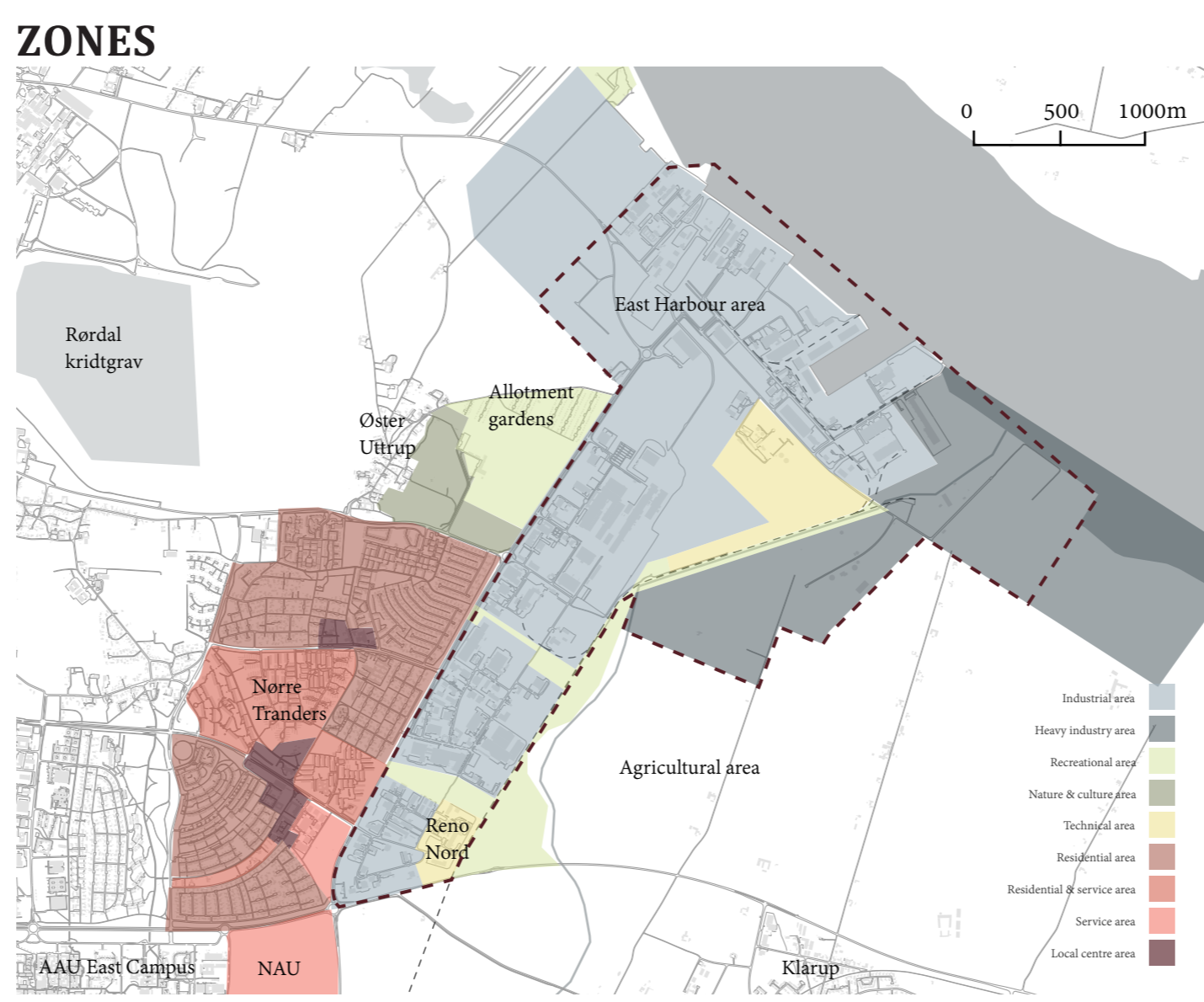
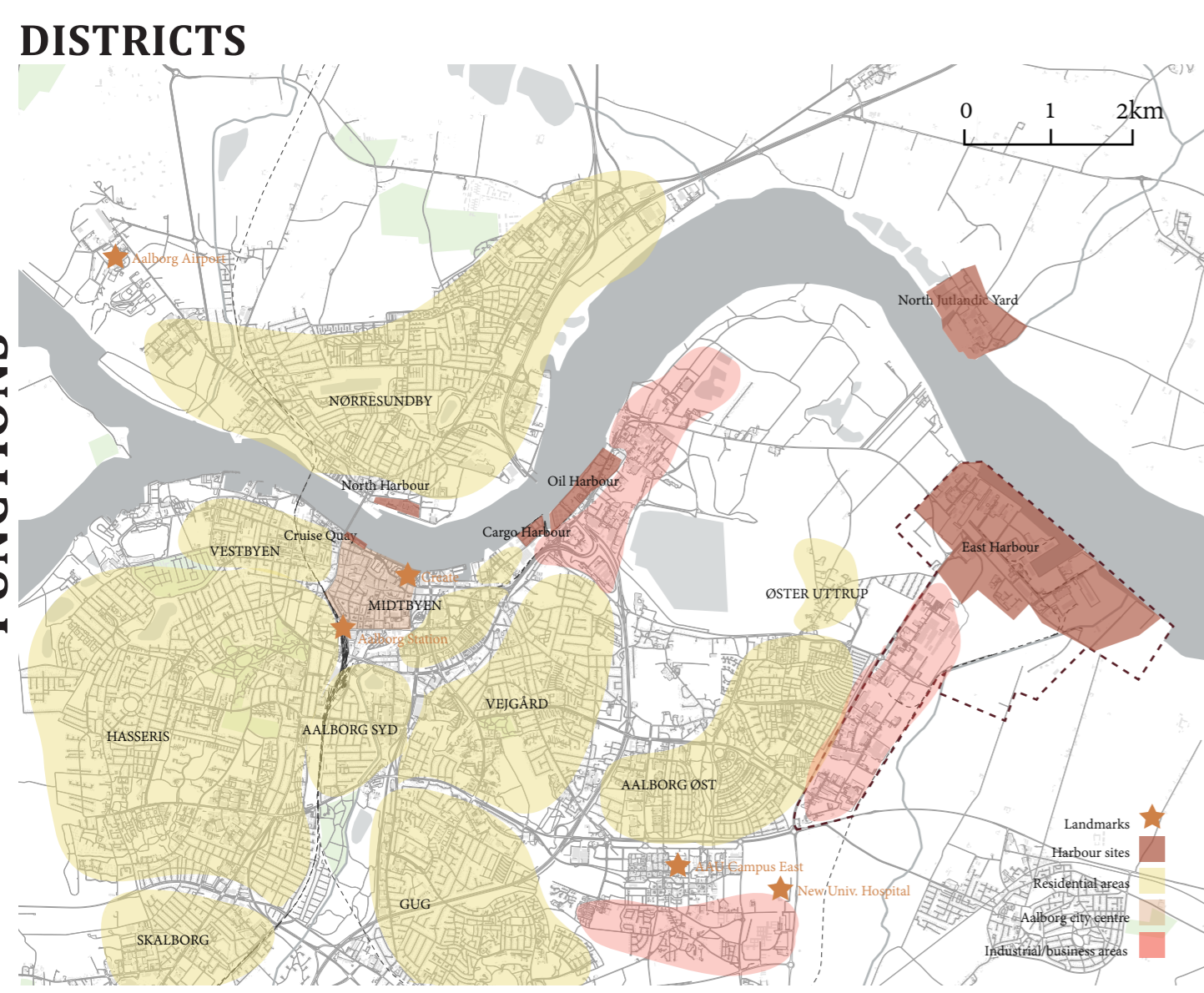
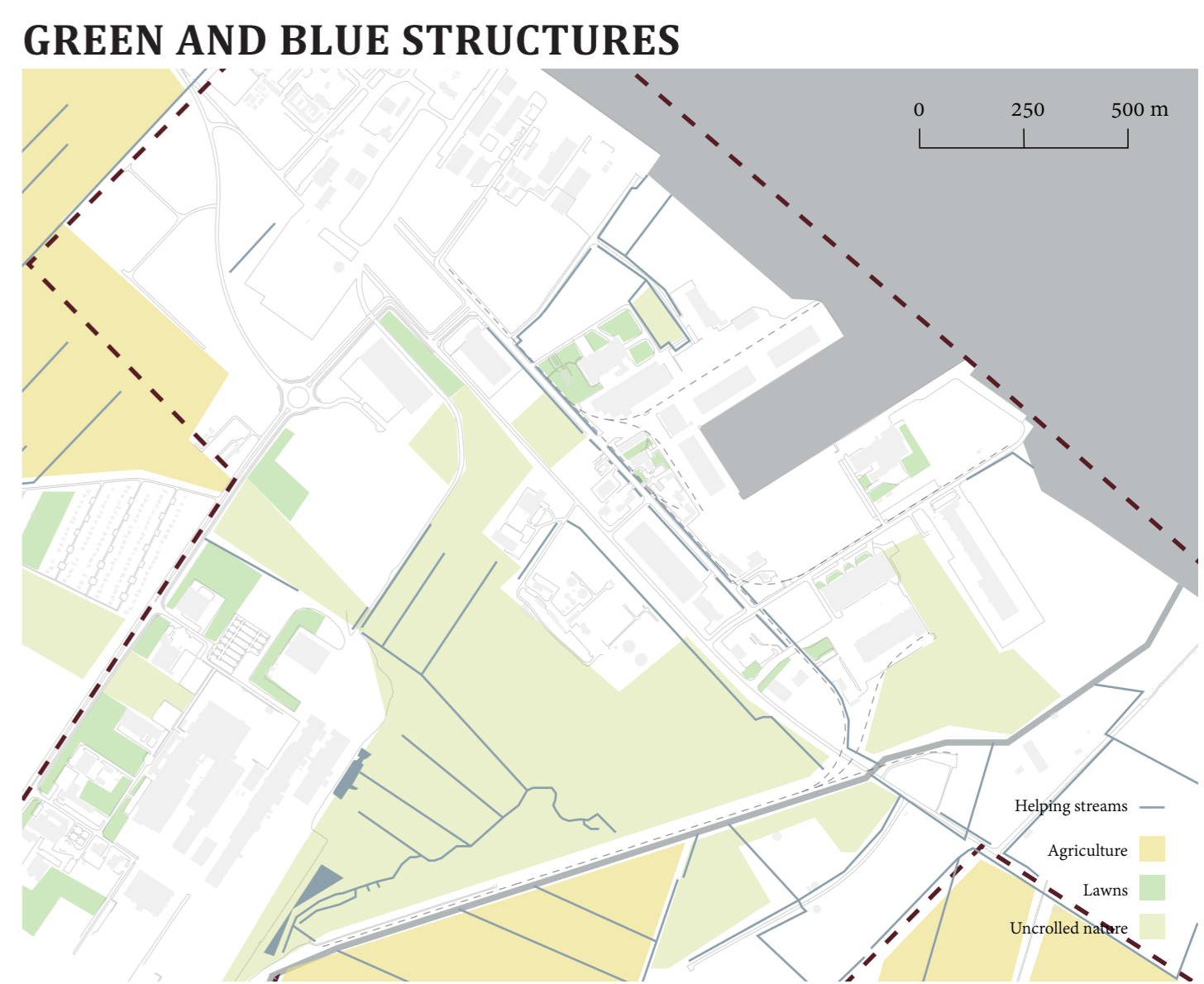
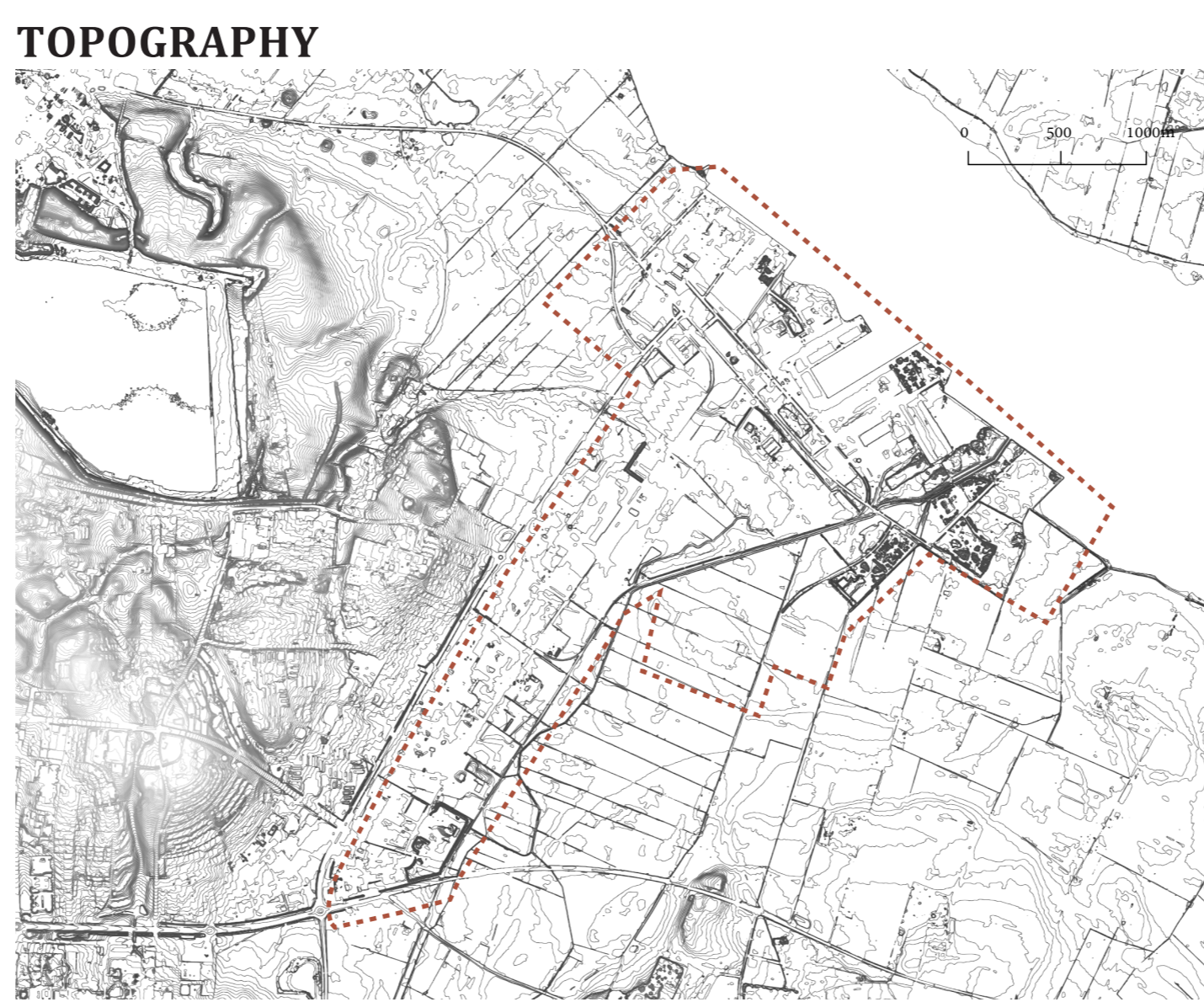
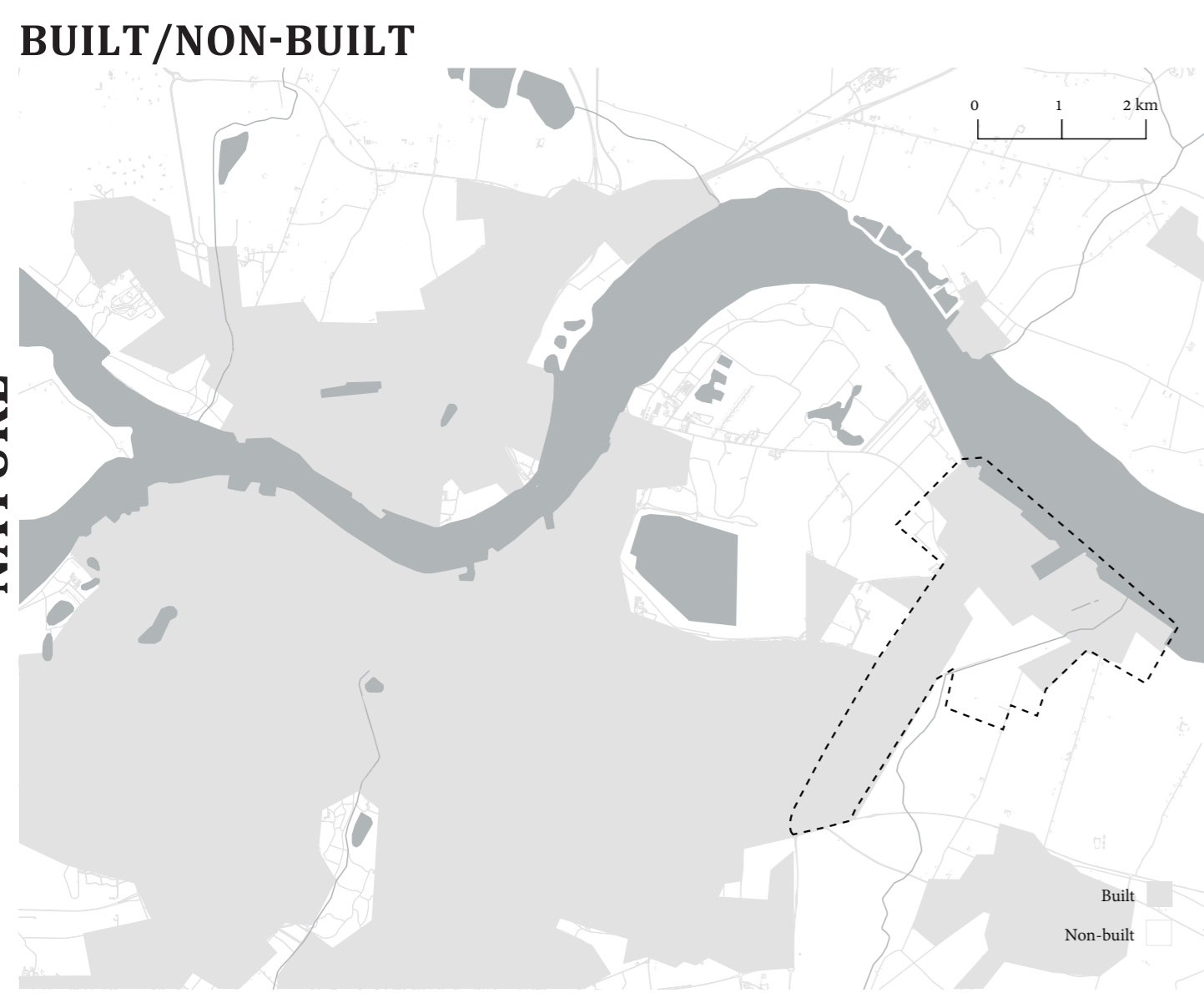
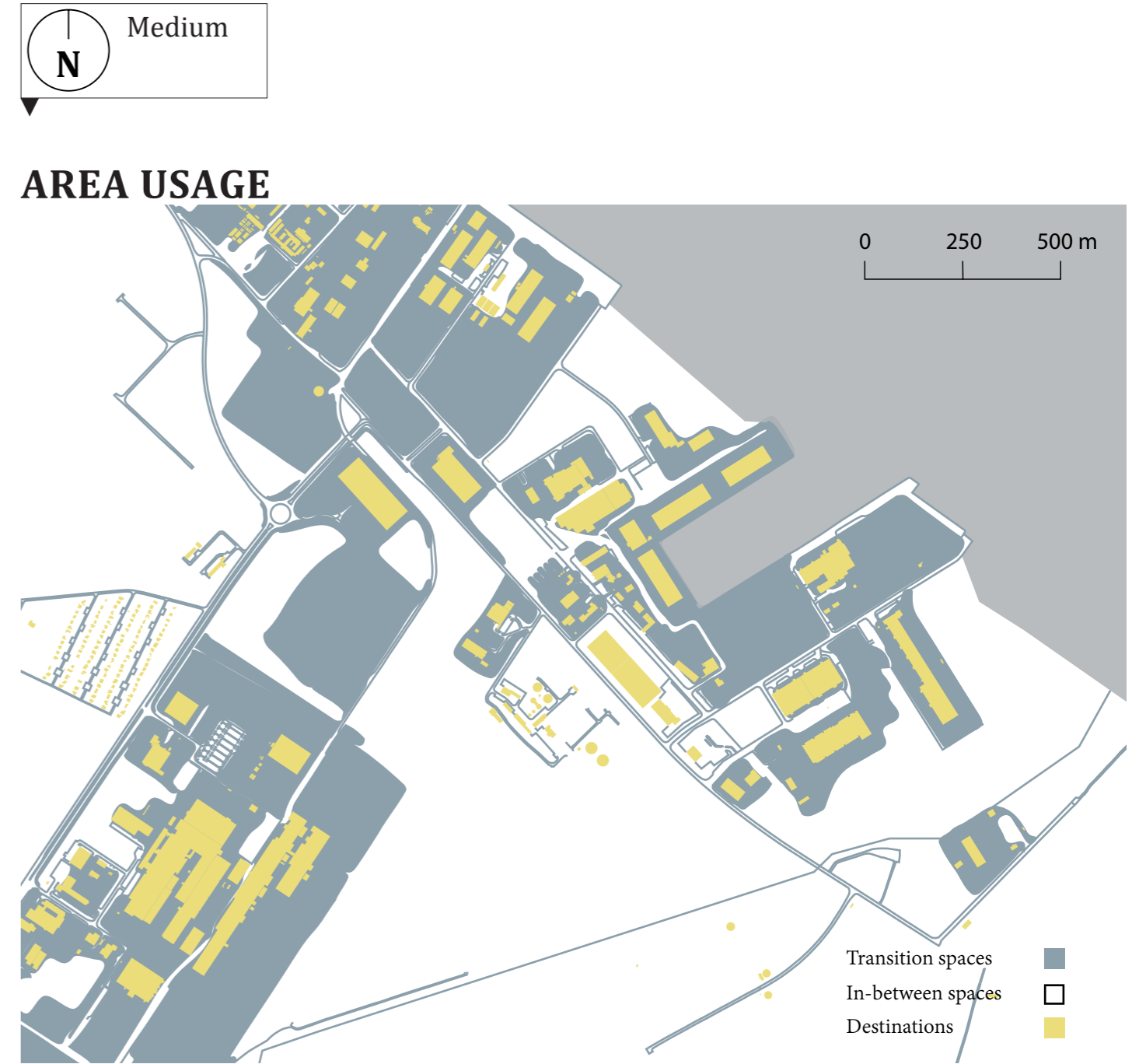
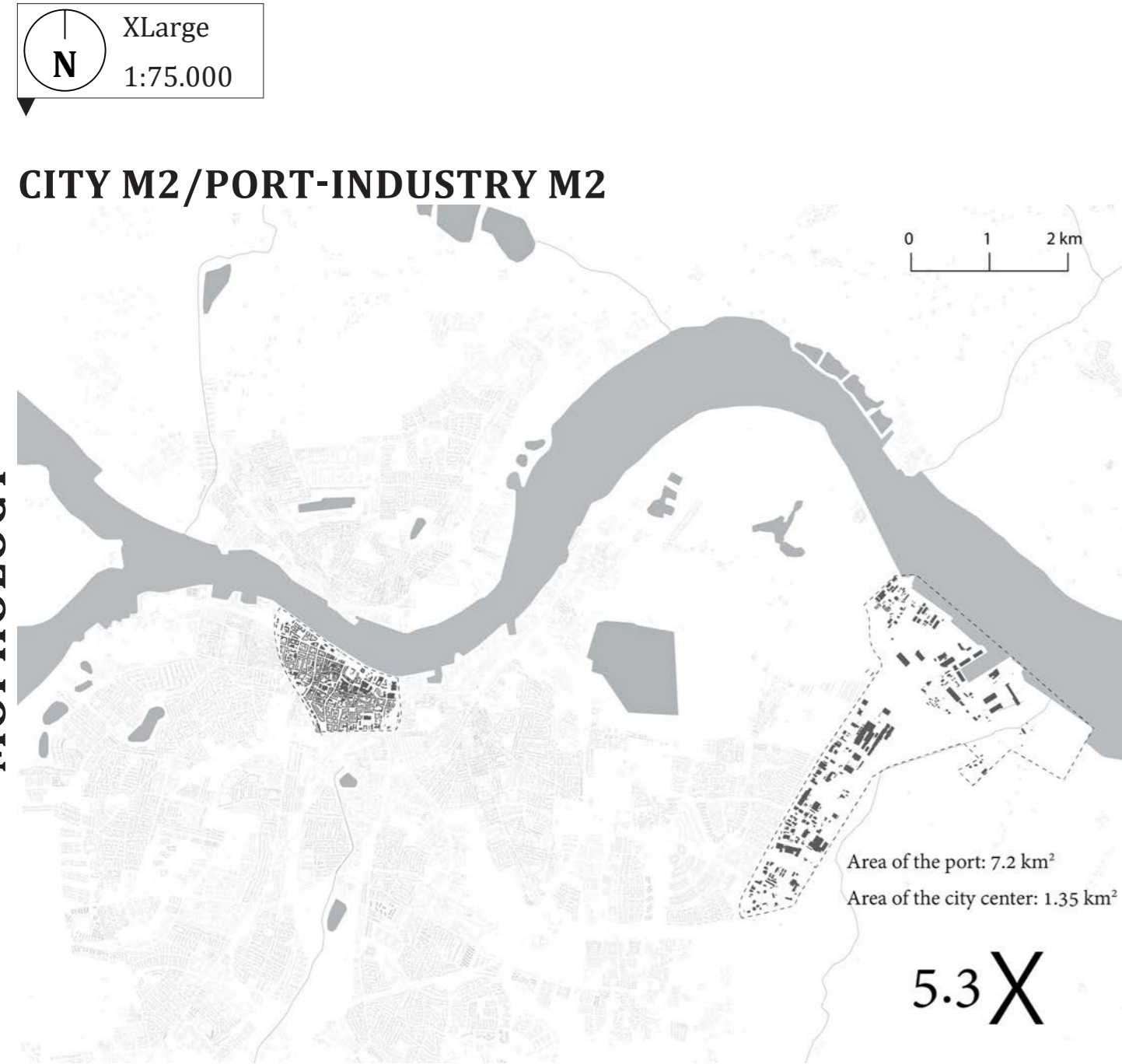
AALBORG EAST



GR. 4

Alicja Bilka
 Frederik Korsgaard Wommelsdorff
 Louise Storgaard Nielsen
 Magnus Kalf Hansen
 Sina Azmoon

MAPPINGS



MOPHOLOGY

NATURE

FUNCTIONS

MOBILITY

AALBORG EAST

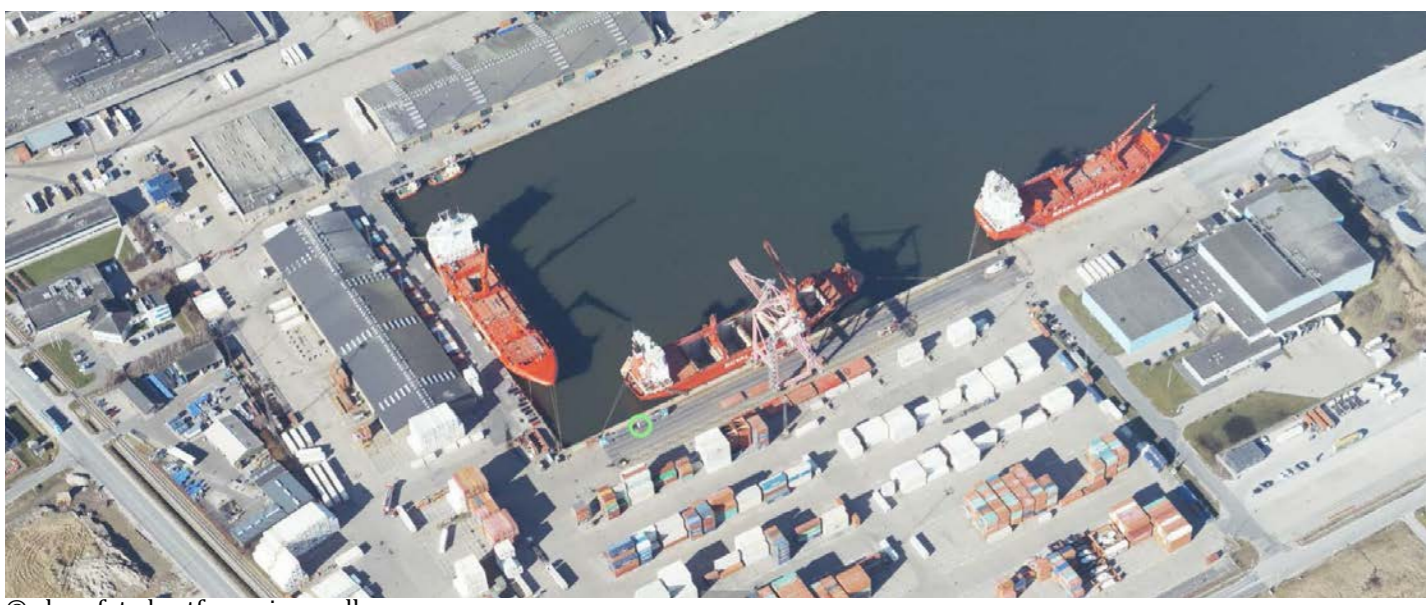


GR. 4

Alicja Bilska
Frederik Korsgaard Wommelsdorff
Louise Storgaard Nielsen
Magnus Kalf Hansen
Sina Azmoun

IN-BETWEEN SPACES

PHOTO SERIES



© skraafoto.kortforsyningen.dk

SECTIONS 1:500

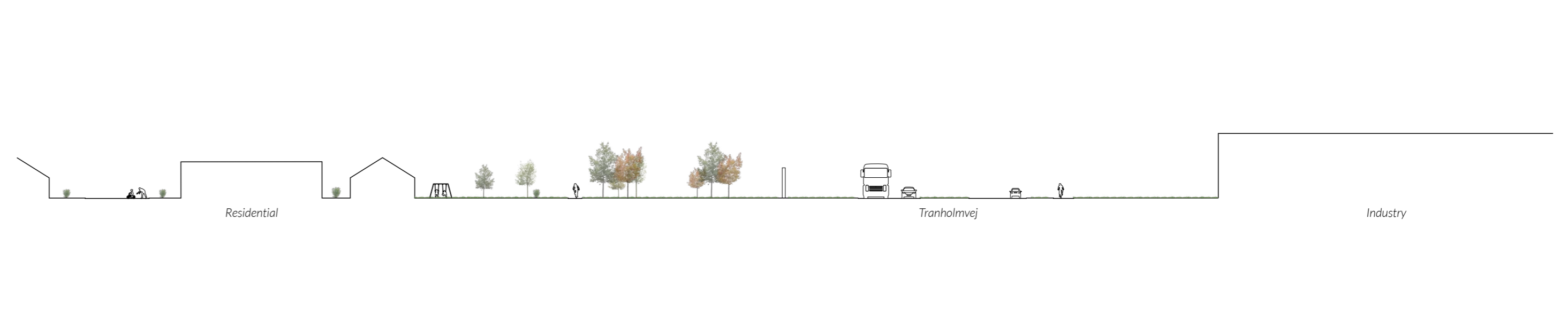
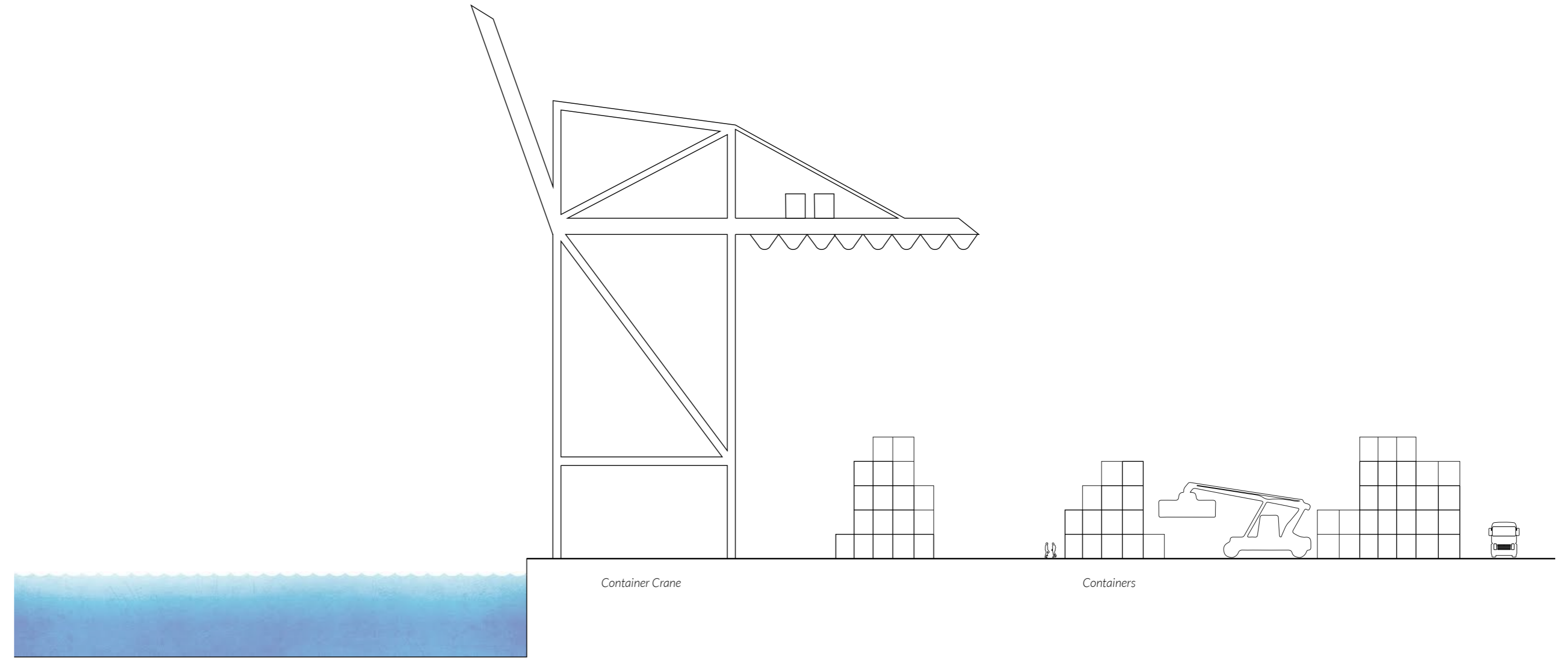


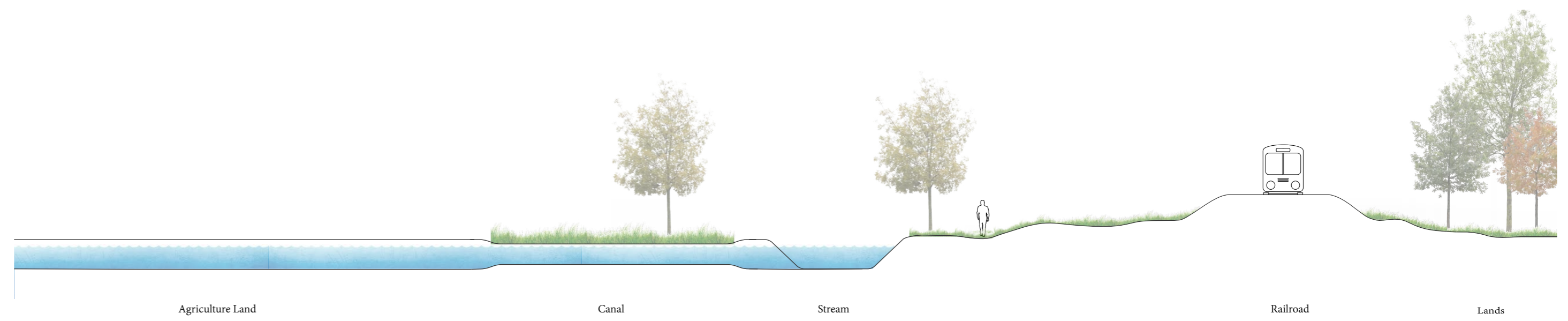
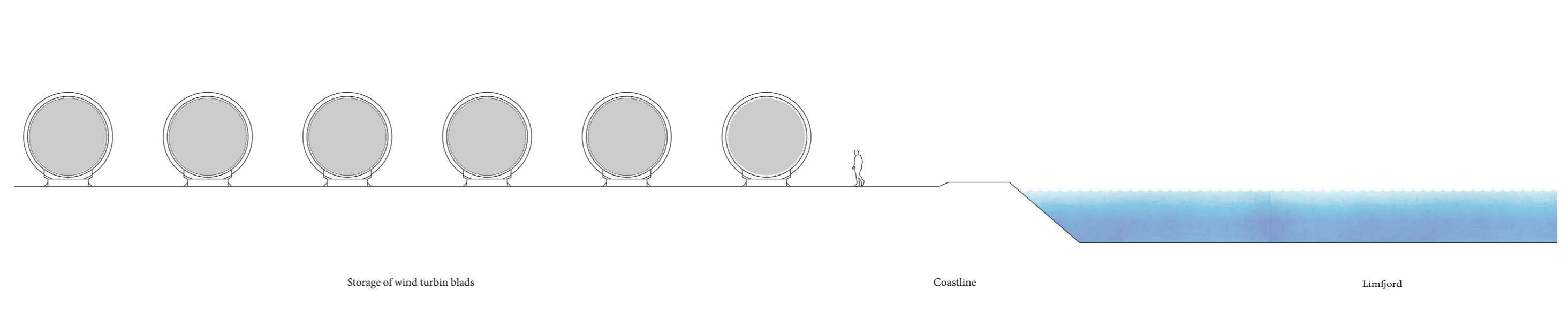
PHOTO SERIES 1



© skraafoto.kortforsyningen.dk

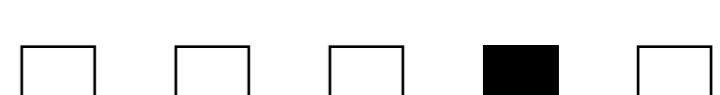
PHOTO SERIES 2

SECTIONS 1:200



© skraafoto.kortforsyningen.dk

AALBORG EAST



GR. 4

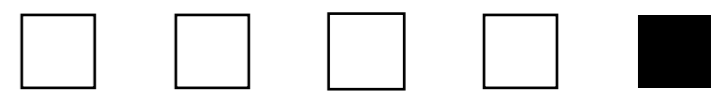
Sina Azmoun
Ala Bilska
Magnus Kalf Hansen
Louise Storgaard Nielsen
Frederik Korgaard Wommelsdorff

PERCEPTION

LEGIBILITY, PHOTO INVESTIGATION: SPATIAL-AESTHETIC CHARACTERISTICS, MATERIALITY, IMPRESSION COLLAGE



AALBORG EAST



GR. 4

Alicja Bilka
 Frederik Korgaard Wommelsdorf
 Louise Storgaard Nielsen
 Magnus Kalf Hansen
 Sina Azmoun

STAKEHOLDER ANALYSIS

MAP OF STAKEHOLDERS IN AND AROUND THE PROJECT AREA 1:10000



Port of Aalborg

- Industrial growth
- Business growth
- Land controle
- Logistics uninterrupted
- PR/image
- Corporation
- Atraktive work environment

Nature in the area

- Animal habitat persavation and enchanment
- Biodiversity
- Polution reduction

Residital areas

- Increasing liveability
- Reduction and protection from noise and polution
- Social sustainability

Aalborg Municipality

- Biodiversity
- Sustainable growth
- Job growth

Green Hub Denmark

- Reducing CO2 production by 70%
- Emphasis on knowledge sharing and communication between the partners
- Innovation
- Sustainability
- PR/image
- Aims to:
 - Create frameworks for new, and innova-tive technologies and green solutions.
 - Create pace for new, and innovative technologies and green solutions.
 - Test new, and innovative technologies and green solutions.

Agricultural areas

- Keeping land
- No port/industry expansion
- No polution
- No interference from Industry