



Aalborg Universitet

AALBORG UNIVERSITY  
DENMARK

## Temporal variation in out-of-hospital cardiac arrest occurrence in individuals with or without diabetes

van Dongen, L H; de Goede, P; Moeller, S; Eroglu, T E; Folke, F; Gislason, G; Blom, M T; Elders, P J M; Torp-Pedersen, C; Tan, H L

*Published in:*  
Resuscitation plus

*DOI (link to publication from Publisher):*  
[10.1016/j.resplu.2021.100167](https://doi.org/10.1016/j.resplu.2021.100167)

*Creative Commons License*  
CC BY 4.0

*Publication date:*  
2021

*Document Version*  
Publisher's PDF, also known as Version of record

[Link to publication from Aalborg University](#)

*Citation for published version (APA):*  
van Dongen, L. H., de Goede, P., Moeller, S., Eroglu, T. E., Folke, F., Gislason, G., Blom, M. T., Elders, P. J. M., Torp-Pedersen, C., & Tan, H. L. (2021). Temporal variation in out-of-hospital cardiac arrest occurrence in individuals with or without diabetes. *Resuscitation plus*, 8, Article 100167.  
<https://doi.org/10.1016/j.resplu.2021.100167>

### General rights

Copyright and moral rights for the publications made accessible in the public portal are retained by the authors and/or other copyright owners and it is a condition of accessing publications that users recognise and abide by the legal requirements associated with these rights.

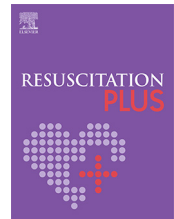
- Users may download and print one copy of any publication from the public portal for the purpose of private study or research.
- You may not further distribute the material or use it for any profit-making activity or commercial gain
- You may freely distribute the URL identifying the publication in the public portal -

### Take down policy

If you believe that this document breaches copyright please contact us at [vbn@aub.aau.dk](mailto:vbn@aub.aau.dk) providing details, and we will remove access to the work immediately and investigate your claim.

Available online at [www.sciencedirect.com](http://www.sciencedirect.com)

# Resuscitation Plus

journal homepage: [www.elsevier.com/locate/resuscitation-plus](http://www.elsevier.com/locate/resuscitation-plus)

## Clinical paper

# Temporal variation in out-of-hospital cardiac arrest occurrence in individuals with or without diabetes

L.H. van Dongen<sup>a</sup>, P. de Goede<sup>b,c</sup>, S. Moeller<sup>d</sup>, T.E. Eroglu<sup>a,d</sup>, F. Folke<sup>d,e</sup>,  
G. Gislason<sup>d,f</sup>, M.T. Blom<sup>a</sup>, P.J.M. Elders<sup>g,h</sup>, C. Torp-Pedersen<sup>i,j,k</sup>, H.L. Tan<sup>a,l,\*</sup>

<sup>a</sup> Amsterdam UMC, Academic Medical Center, University of Amsterdam, Department of Experimental and Clinical Cardiology, Heart Centre, Amsterdam Cardiovascular Sciences, Meibergdreef 9, Amsterdam, the Netherlands

<sup>b</sup> Laboratory of Endocrinology, Amsterdam University Medical Center, University of Amsterdam, Amsterdam Gastroenterology, Endocrinology and Metabolism, Amsterdam, the Netherlands

<sup>c</sup> Hypothalamic Integration Mechanisms Group, Netherlands Institute for Neuroscience (NIN), an Institute of the Royal Netherlands Academy of Arts and Sciences, Amsterdam, the Netherlands

<sup>d</sup> Department of Cardiology, Copenhagen University Hospital Gentofte, Hellerup, Denmark

<sup>e</sup> Emergency Medical Services Copenhagen, University of Copenhagen, Denmark

<sup>f</sup> The Danish Heart Foundation, Copenhagen, Denmark

<sup>g</sup> Amsterdam UMC, Vrije Universiteit Amsterdam, Department of Epidemiology and Biostatistics, Amsterdam Public Health Research Institute, De Boelelaan 1117, Amsterdam, Netherlands

<sup>h</sup> Amsterdam UMC, Vrije Universiteit Amsterdam, Department of General Practice Medicine, Amsterdam Public Health Institute, De Boelelaan 1117, Amsterdam, Netherlands

<sup>i</sup> Department of Cardiology, North Zealand Hospital, Hillerød, Denmark

<sup>j</sup> Department of Cardiology, Aalborg University Hospital, Aalborg, Denmark

<sup>k</sup> Department of Public Health, University of Copenhagen, Denmark

<sup>l</sup> Netherlands Heart Institute, Utrecht, the Netherlands

## Abstract

**Objective:** Out-of-hospital cardiac arrest (OHCA) occurrence has been shown to exhibit a circadian rhythm, following the circadian rhythm of acute myocardial infarction (AMI) occurrence. Diabetes mellitus (DM) is associated with changes in circadian rhythm. We aimed to compare the temporal variation of OHCA occurrence over the day and week between OHCA patients with DM and those without.

**Methods:** In two population-based OHCA registries (Amsterdam Resuscitation Studies [ARREST] 2010–2016,  $n = 4163$ , and Danish Cardiac Arrest Registry [DANCAR], 2010–2014,  $n = 12,734$ ), adults ( $\geq 18$ y) with presumed cardiac cause of OHCA and available medical history were included. Single and double cosinor analysis was performed to model circadian variation of OHCA occurrence. Stratified analysis of circadian variation was performed in patients with AMI as immediate cause of OHCA.

**Results:** DM patients (22.8% in ARREST, 24.2% in DANCAR) were older and more frequently had cardiovascular risk factors or previous cardiovascular disease. Both cohorts showed 24 h-rhythmicity, with significant amplitudes in single and double cosinor functions ( $P$ -range  $< 0.001$ ). In both registries, a morning peak (10:00–11:00) and an evening peak (20:00–21:00) was observed in both DM and non-DM patients. No septadian variation was observed in either DM or non-DM patients ( $P$ -range 0.13–84).

**Conclusions:** In these two population-based OHCA registries, we observed a similar circadian rhythm of OHCA occurrence in DM and non-DM patients.

**Keywords:** Out-of-hospital cardiac arrest, Diabetes mellitus, Circadian rhythm, Temporal variation

\* Corresponding author at: Amsterdam UMC, Academic Medical Center, Heart Center, Department of Cardiology, Meibergdreef 9, 1105 AZ Amsterdam, the Netherlands.

E-mail address: [h.l.tan@amsterdamumc.nl](mailto:h.l.tan@amsterdamumc.nl) (H.L. Tan).

<https://doi.org/10.1016/j.resplu.2021.100167>

Received 17 June 2021; Received in revised form 24 August 2021; Accepted 4 September 2021

Available online xxxx

2666-5204/© 2021 The Authors. Published by Elsevier B.V. This is an open access article under the CC BY license (<http://creativecommons.org/licenses/by/4.0/>).

## Introduction

Several studies have shown circadian and septadian variation in the occurrence of out-of-hospital cardiac arrest (OHCA), with peak incidence during morning hours and on Mondays.<sup>1–4</sup> However, two recent studies have failed to observe these peaks, and observed an overall higher occurrence during daytime and a nadir on Sundays.<sup>5,6</sup> The circadian and septadian variations of OHCA incidence seem to coincide with the temporal variations in the incidence of acute myocardial infarction (AMI),<sup>7,8</sup> a major cause of OHCA. It is possible that the temporal variation in OHCA incidence is due to temporal variation in cardiac (electro)physiologic properties that are involved in the occurrence of the cardiac arrhythmias that underlie OHCA.<sup>9–11</sup> However, a previous study suggested that underlying patient characteristics need to be explored to provide further insight into the observed temporal patterns.<sup>12</sup>

One patient characteristic that may be associated with changes in temporal variation is diabetes mellitus (DM). Patients with DM have a 2–3 fold increased risk for OHCA,<sup>13–15</sup> and previous studies have shown that DM is associated with changes in the temporal patterns of various parameters that impact on the occurrence of cardiac arrhythmias, e.g.,<sup>16,17</sup> blood pressure,<sup>18,19</sup> hypoglycaemia,<sup>20</sup> and QTc duration.<sup>21</sup> Moreover, QTc prolongation in DM seems to be associated with cardiac autonomic neuropathy and has been demonstrated in DM patients without any evidence of ischemic heart disease.<sup>22</sup> Also, DM is associated with attenuated day-night differences in the sympathovagal balance,<sup>23</sup> and one study showed no circadian rhythm of AMI occurrence in DM patients without neuropathy.<sup>24</sup> These disruptions and the absence of a circadian rhythm of AMI in DM might result in diminished circadian and septadian variation in OHCA occurrence or different timing of OHCA events as compared to a non-diabetic OHCA population.

With this study, we aimed to investigate the temporal variation of OHCA occurrence over the day and week by studying patients with or without DM in a Dutch and a Danish OHCA registry. Additionally, as OHCA occurrence has been observed to follow the temporal variation of AMI, AMI is a major cause of OHCA, and OHCA in patients with DM is often attributed to increased risk of AMI,<sup>25</sup> we investigated whether such variations occur among OHCA patients in whom AMI was the immediate cause of OHCA.

## Methods

### Study population

The patients included in this study were drawn from the Amsterdam Resuscitation Studies (ARREST) and the Danish Cardiac Arrest Registry (DANCAR). ARREST is an ongoing prospective registry of all Emergency Medical System (EMS)-attended OHCA cases in one contiguous region of the Netherlands (North Holland province, urban and rural areas, 2.4 million inhabitants).<sup>26</sup> DANCAR is a nationwide registry holding information on all OHCA patients in Denmark with a resuscitation attempt either by bystander or EMS.<sup>27</sup>

Patients with a presumed cardiac cause of OHCA above the age of 18 were included from the ARREST registry in 2010–2016 and from DANCAR in 2010–2014. ARREST and DANCAR were conducted according to the Declaration of Helsinki. The ARREST registry was approved by the Medical Ethics Committee of the Academic Medical Centre in Amsterdam (Ref.no.2017\_260), and

written informed consent was obtained from all surviving patients. Registry-based studies in Denmark do not require ethical approval, however, DANCAR was approved by the Danish Data Protection Agency (Ref.no. 2007-58-0015, local ref.no. GEH-2014-017, I-Suite.no. 02735). This study falls under the approval of the ARREST and DANCAR registries.

### Data collection

In ARREST, age and sex was retrieved from EMS and hospital information. Medical history was retrieved from the general practitioner (GP) and contained the patients' episode list and/or letters from medical specialists, along with a questionnaire filled out by the GP. This questionnaire contained a checklist of several comorbidities, including heart diseases, cardiovascular risk factor and other comorbidities. Patients were classified as having DM if the GP stated the patients had either type 1 or type 2 DM prior to OHCA. For the Danish population we linked the cardiac arrest patients from DANCAR to information from other national registries using the unique civil registration number that is assigned to all Danish residents. By this we obtained information on age and sex from the Civil Personal Registration Registry.<sup>28</sup> We obtained information on hospital admissions, including discharge diagnosis codes, which were used to define risk factors and comorbidities (all included diagnosis codes are in accordance with the International Classification of Diseases (ICD-10) system).<sup>29,30</sup> We obtained information about medication use up to 180 days before OHCA from the National Prescription Registry. This information was combined with discharge diagnosis codes to define history of DM and hypertension, as well as hypercholesterolemia including patients with lipid-lowering medication use.<sup>31,32</sup> Due to low prevalence of T1D and our assumption that both in T1D and T2D similar processes, such as diabetic neuropathy, may affect cardiac electrophysiology,<sup>33</sup> T1D and T2D are combined in the DM group.

For both registries the resuscitation parameters included bystander or ambulance witnessed OHCA (yes/no), OHCA location (home vs. public), bystander cardiopulmonary resuscitation (CPR, yes/no), connection of an automated external defibrillator (AED, yes/no, in ARREST by bystander or first responder, in DANCAR by bystander when shocked) and response time (in ARREST time from emergency call to time of connection of AED or manual defibrillator, whichever came first, in DANCAR: time from emergency call to first rhythm analysis by the EMS), and were collected according to the Utstein criteria.<sup>34</sup> OHCA date and time were retrieved from the EMS dispatch centre for ARREST and DANCAR. Time of OHCA was categorized per hour starting from midnight.

AMI as immediate cause of OHCA could only be established for patients who survived to hospital admission. In ARREST this was derived from hospital records (including letters, ECGs, cardiac enzymes, treatments, discharge diagnosis and death certificates). In DANCAR, this was derived from ICD10 diagnosis codes (DI21) and death certificate diagnosis.

### Statistical analysis

Descriptive statistics are summarized as means  $\pm$  SD, or medians with interquartile ranges (IQR) for continuous variables. Categorical variables are presented as frequencies and percentages. Both cohorts are presented separately, due to different population characteristics and definitions.

OHCA occurrence by DM status was visualized by calculating the proportion per hour of the day, and day of the week and plotting

these proportions per hour/day and fitting a single and double cosinor. Previous studies suggested a single cosinor would provide a suitable fit to analyse OHCA occurrence. Therefore, we initially analysed OHCA occurrence using a single cosinor,<sup>8,35</sup> fitting the data to the following regression:  $y = a + b \cdot \cos(2\pi(x - c)/24)$ , where  $a$  is the mesor (mean) level,  $b$  the amplitude (difference between mean and peak), and  $c$  the acrophase (time of peak) of the rhythm.<sup>36,37</sup> However, our data points suggested that a double cosinor could provide a better fit, and consequently we performed a double cosinor as a second analysis, using the following regression:  $y = a + b \cdot \cos(2\pi(x - c)/24) + d \cdot \cos(4\pi(x - e)/24)$ , where  $a$  is the mesor (mean),  $b$  the amplitude of the first cosine function,  $c$  the acrophase (top) of the first cosine function,  $d$  the amplitude of the second cosine function, and  $e$  the acrophase (top) of the second cosine function. For the septadian analysis, data were fitted to  $y = a + b \cdot \cos(2\pi(x - c)/7)$ . To numerically solve for the peaks of the fitted double cosine the local maxima were determined using Python (script available upon request). These analyses were performed in several populations in both cohorts individually: the total study population, a subgroup of patients with an AMI as immediate cause of their OHCA, and in a 1:1 matched population, as DM patients had different characteristics as compared to non-DM patients. Cosinor analysis does not allow for direct adjustment for confounders. Nevertheless, in attempt to adjust the cosinor analysis for confounding, 1:1 propensity score matching has been performed to match a case to a control, with a calliper of 0.1. In the ARREST cohort, the model included age, sex, cardiovascular disease risk factors (obesity, hypertension, hypercholesterolemia, in a cumulative manner) and cardiovascular diseases (previous AMI, previous stroke, in a cumulative manner). For DANCAR we were not able to obtain data on obesity, but otherwise the model included the same variables. Lastly, a sensitivity analysis has been performed in only T2D patients, thereby excluding T1D patients, in the total population.

Statistical analyses were carried out using SPSS Statistics version 26.0 software (SPSS Inc, Chicago, IL), R version 3.4.1 ("R Development Core Team")<sup>38</sup> and the cosinor analyses with SigmaPlot 14.0 (Systat Software Inc, San Jose, CA) and Python version 3.9.2 (Python Software Foundation). A two-sided  $p < 0.05$  was considered statistically significant.

## Results

In the ARREST registry, 4,163 patients were included with a presumed cardiac cause of OHCA, complete medical history present and known time of call to EMS dispatch centre (eFigure 1). Of these patients, 22.8% ( $n = 949$ ) were diagnosed with DM. In DANCAR, 12,734 patients met the inclusion criteria, and 24.2% ( $n = 2,481$ ) were diagnosed with DM (eFigure 2).

Overall, patients with DM were older, had more cardiovascular risk factors and more often previous cardiovascular disease (Table 1). Additionally, patients with DM were less frequently in a public location when OHCA struck, and less frequently presented with a shockable initial rhythm.

Analysis of circadian variation in OHCA occurrence, fitted with a single cosinor wave, showed an amplitude statistically significantly greater than zero, indicating 24-h rhythmicity in both cohorts ( $P$ -range  $< 0.001$ , eFigure 3 and eTables 1–2). However, visual inspection of the data points indicated that the single cosinor fit did not cap-

ture the individual data points sufficiently well; e.g. individual data points observed in the morning and early evening were not reflected in the single cosinor fit. Accordingly, we subsequently fitted the data with a double cosinor function, and found that the individual data points were well captured using this fit (Fig. 1). We therefore used this analysis as our main analysis of circadian variation. Using this analysis, we observed a 24 h rhythmicity in both DM and non-DM patients, indicated by statistically significant amplitudes ( $P$ -range  $< 0.0004$ , eTable 3). Moreover, we found that, in both cohorts, the circadian variation in OHCA occurrence was similar in DM patients and in non-DM patients, with a major peak around 10:30–12:00 and a second peak around 19:00–20:00 (eTable 3). Limiting our analysis of the DM group to only T2D yielded similar results (eFigure 4). Moreover, similarly as the single cosinor analysis, the amplitude in non-DM is slightly higher (in ARREST  $1.36 \pm 0.25$  vs.  $1.79 \pm 0.11$  and in DANCAR  $1.40 \pm 0.17$  vs.  $1.68 \pm 0.002$ , for DM vs non-DM, eTable 3). In the AMI population, the first peak of the DM groups are a little earlier as compared to the non-DM groups of both cohorts; in DANCAR, the DM group with AMI as cause had the peak at 11:00, and the non-DM at 12:00, and in ARREST the DM groups peaked at 11:00 and non-DM at 13:00. No second peaks could be determined for these groups (eTable 3), as after the first peak the occurrence drops and does not rise again (no local maximum), despite having a clearly visible shoulder in the curve. This resulted in the inability to solve for a second peak. In the 1:1 matched population the first peak in DANCAR lies around 10:00–11:00 am, and in ARREST around 12:00.

Analysis of septadian variation using single cosinor showed non-significant amplitudes in both DM and non-DM in the total population (Fig. 2), in both cohorts, indicating no septadian variation (eTables 1–2).

## Discussion

In these Dutch and Danish population-based cohorts of EMS-attended OHCA, we observed a circadian rhythm of OHCA occurrence in DM and non-DM patients, with a first peak in the late morning and a second peak in the early evening. However, the circadian rhythms of patients with and without DM were comparable. No septadian variation was observed in both DM and non-DM.

### Circadian variability in OHCA occurrence

Over the past decades, several studies have demonstrated circadian patterns in the incidence of OHCA, with peaks typically in the morning hours and a smaller peak in the late afternoon/early evening.<sup>1–5</sup> However, recently two studies showed no morning peak, but a constantly higher frequency during the wake hours.<sup>4,5</sup> The current study shows a 24-h rhythmicity, indicated by significant amplitudes in the cosinor analyses. Moreover, our study showed a morning peak and a smaller peak in early evening. Nevertheless, our study does concur with the abovementioned studies regarding a higher occurrence of OHCA during wake-hours.

OHCA occurrence has been known to follow the temporal variation of AMI, with peaks around 11:00.<sup>8,39,40</sup> However, two recent studies observed something different: one study showed not only a morning peak, but an additional peak in the late afternoon,<sup>41</sup> and the other showed no peak in the morning, but overall highest rates during daytime.<sup>1</sup> Circadian variation in our subpopulation of patients with MI as immediate cause of OHCA, which looked very similar to

**Table 1 – Baseline characteristics of the study populations.**

	Arrest		Dancar*	
	Diabetics <i>n</i> = 949	Non-diabetics <i>n</i> = 3,214	Diabetics <i>n</i> = 2,481	Non-diabetics <i>n</i> = 10,253
Age (y), mean ± SD	71.2 ± 11.2	67.0 ± 14.3	72.0 ± 11.4	71.1 ± 14.4
Male sex	645 (68.0)	2301 (71.6)	1664 (67.1)	6801 (66.3)
Cardiovascular risk factors				
Obese	356 (37.5)	443 (13.8)	-	-
Hypertension	684 (72.1)	1,396 (43.4)	1,837 (74.0)	4,576 (44.6)
Hypercholesterolemia	459 (48.4)	870 (27.1)	1,717 (69.2)	3,108 (30.3)
Previous cardiovascular disease				
Myocardial infarction	293 (30.9)	610 (19.0)	406 (16.4)	993 (9.7)
Heart failure	286 (30.1)	490 (15.2)	793 (32.0)	1,871 (18.2)
Arrhythmias	282 (29.7)	619 (19.3)	749 (30.2)	2,204 (21.5)
Cardiomyopathy	89 (9.4)	198 (6.2)	134 (5.4)	339 (3.3)
Valve disorders	173 (18.2)	402 (12.5)	275 (11.1)	886 (8.6)
CVA/TIA	177 (18.7)	367 (11.4)	443 (17.9)	1,297 (12.6)
Resuscitation characteristics				
Witnessed status <sup>†</sup>	674 (71.7)	2,356 (73.9)	1,429 (58.0)	6,116 (60.0)
Public location	208 (21.9)	899 (28.0)	553 (22.9)	2,866 (28.8)
Bystander CPR	668 (71.1)	2,371 (74.7)	1,338 (54.2)	5,512 (54.1)
AED used <sup>‡</sup>	487 (51.3)	1,703 (53.0)	64 (2.7)	335 (3.5)
Shockable initial rhythm	349 (37.1)	1,479 (46.6)	542 (22.8)	2,673 (27.3)
Response time (min), median (IQR)	8.9 (6.6–11.5)	8.5 (6.6–10.9)	12 (8–19)	13 (8–20)

Results are presented in *n* (%), unless specified otherwise.

Missing values ARREST: witnessed status *n* = 36, public location *n* = 1, bystander CPR *n* = 49, shockable initial rhythm *n* = 48, and response time *n* = 383. Missing values DANCAR: witnessed status *n* = 75, location of arrest *n* = 370, bystander CPR *n* = 77, bystander AED use *n* = 786, initial recorded heart rhythm *n* = 562, and EMS response time *n* = 3,525.

\* Note: in DANCAR comorbidity assessment was based on hospital information, and for DM, hypertension and hypercholesterolemia medication use up to 180 days before OHCA was included.

<sup>†</sup> Witnessed by either a bystander or ambulance personnel.

<sup>‡</sup> AED use in ARREST by both bystanders and first responders, in DANCAR only by bystanders.

the total OHCA population, showed a peak of around 10–11 in the morning, and a later peak in the late afternoon/early evening, but overall higher daytime occurrence.

Two studies investigating circadian rhythms in OHCA occurrence<sup>2</sup> and ST-elevation AMI (STEMI) occurrence,<sup>42</sup> including DM, showed the occurrence of both OHCA and STEMI was fairly constant over the day in DM patients. This has been attributed to defective cardiac innervation in DM or more vulnerable plaques in untreated diabetic patients, so smaller perturbations could lead to AMI.<sup>43</sup> Nevertheless, in contrast with these studies, the present study did show a circadian rhythm in DM patients, which was similar to the non-DM population. This difference might be attributed the fact that the first study<sup>2</sup> only looked at three time categories (daytime, evening and night), which might have resulted in a loss of temporal resolution, and the second study<sup>42</sup> looked at STEMI instead of OHCA, and used frequencies instead of proportions, which might have complicated to visually compare groups. Nevertheless, in our study circadian rhythms of OHCA occurrences in DM and non-DM patients are comparable, suggesting that the changes in temporal patterns of (electro)physiologic parameters in DM do not influence the circadian rhythm of OHCA occurrence.

#### Septadian variability in OHCA occurrence

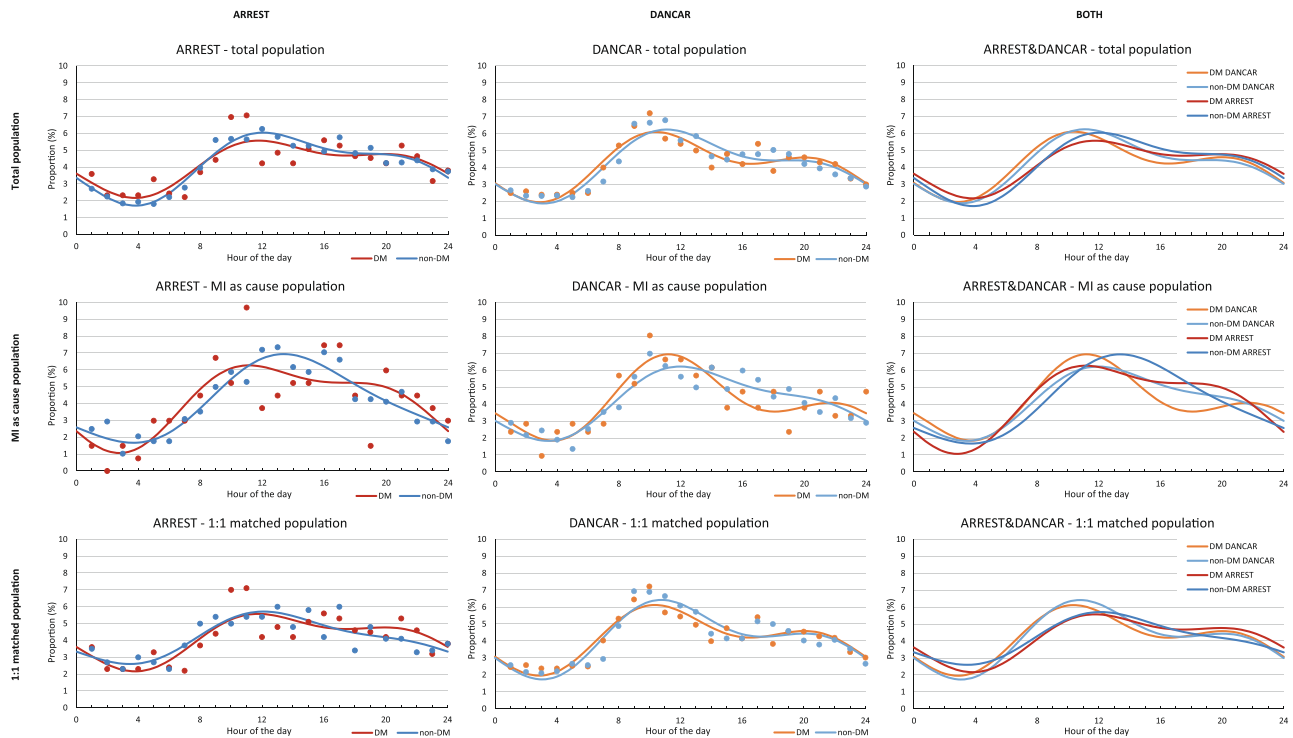
Several (older) community-based studies have consistently shown a Monday peak in OHCA occurrence. This peak has been attributed to

the stress of the new workweek. Nevertheless, several recent studies, did not observe a Monday peak of OHCA incidence.<sup>1,4,5</sup> These studies reported peaks on Saturday,<sup>1</sup> or in the weekend,<sup>4</sup> or a nadir on Sunday.<sup>5</sup> A peak in the weekend or Saturday could be explained by unhealthy habits in the weekend (e.g. alcohol consumption). However, our study did not suggest a clear septadian rhythmicity.

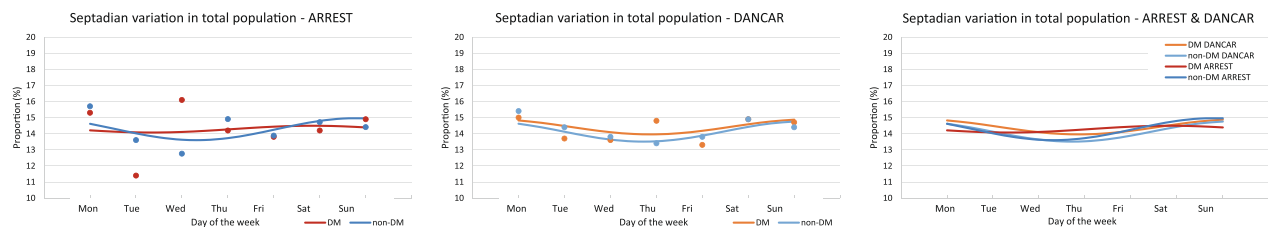
#### Limitations

Several issues are important to note in the interpretation of the present study. First, only patients in which the EMS (or bystanders in DANCAR) have attended the OHCA are included in this study, so it may exclude or misclassify patients who died at night, but were only detected in the morning. Nevertheless, results from Jallow et al.<sup>1</sup> who included also already deceased patients (with thus less certainty on the actual time of collapse), showed no tendency of more OHCA occurring at night. Second, we could not account for severity of DM, and therefore lacked the ability to study possible changes in diurnal (or septadian) patterns of OHCA occurrence in patients with severe DM. Additionally, we have presumed comparability in temporal variation in patients with type 1 and type 2 diabetes. As T2D are the main group (97%) results are only generalizable to T2D. Third, in our analysis of patients with an AMI as immediate cause of the OHCA, only patients who have survived to hospital admission are included, as diagnosis occurs in hospital. At last, the study was based on observational data and the results therefore represent associations and not necessarily causal relations.





**Fig. 1 – Distribution of occurrence of OHCA over the hours of the day by diabetes status using double cosinor modelling in ARREST (first column), DANCAR (second column) and a combination of both cohorts (third column) for the total population (top row), in patients with MI as cause of OHCA (middle row) and in a 1:1 matched population (bottom row). ARREST; Amsterdam Resuscitation Studies, DANCAR; Danish Cardiac Arrest Registry, DM; diabetes mellitus, MI; myocardial infarction, OHCA; out-of-hospital cardiac arrest.**



**Fig. 2 – Distribution of occurrence of out-of-hospital cardiac arrest over the week by diabetes status in both cohorts using single cosinor modelling in the total population. DM; diabetes mellitus.**

## Conclusion

In these two population-based OHCA registries, we observed a comparable circadian rhythm of OHCA occurrence in DM and non-DM patients with a peak in the late morning and in the early evening.

## Data availability statement

The data underlying this article are available in the article and in its online [supplementary material](#). The data cannot be shared publicly for privacy of individuals that participated in the study as data cannot be provided completely anonymous according to the Medical Ethics Committee and the Data Protection Officer of our institution (MEC: mecamlc@amc.nl, DPO: fg@amc.nl).

## CRediT authorship contribution statement

**L.H. van Dongen:** Conceptualization, Methodology, Formal analysis, Investigation, Visualization, Writing – original draft, Writing – review & editing. **P. de Goede:** Conceptualization, Methodology, Formal analysis, Software, Writing – review & editing. **S. Moeller:** Formal analysis, Investigation, Writing – original draft, Writing – review & editing. **T.E. Eroglu:** Writing – review & editing. **F. Folke:** Resources, Writing – review & editing. **G. Gislason:** Resources, Writing – review & editing. **M.T. Blom:** Conceptualization, Methodology, Writing – original draft, Writing – review & editing, Supervision. **P.J.M. Elders:** Conceptualization, Methodology, Writing – review & editing. **Christian Torp-Pedersen:** Resources, Writing – review & editing. **H.L. Tan:** Conceptualization, Methodology, Supervision, Resources, Writing – review & editing.

## Acknowledgements

The authors thank P.C.M. Homma, R. Stieglis, V.G.M. van Eeden and L. A.E. Bijman for data management, and R.W. Koster, MD, PhD for management of the ARREST project. Moreover, the authors are greatly thankful for all the students for collecting data, the participation of all EMS dispatch centres (Amsterdam, Haarlem, Alkmaar), regional ambulance services (Ambulance Amsterdam, GGD Kennemerland, Witte Kruis, Ambulancezorg Veiligheidsregio Noord-Holland Noord), fire brigades, and police departments, as well as general practitioners and hospitals in the study region. LHvD, MTB and HLT take full responsibility for the integrity of the data and the accuracy of the data analysis. The authors also want to thank the EMS personnel in Denmark who supply the Danish Cardiac Arrest Registry with data for each OHCA and TrygFonden supporting the Danish Cardiac Arrest Registry, though without any commercial interests in the cardiac arrest-area, and without influence in this study.

## Funding

This work was supported by the European Union's Horizon 2020 research and innovation programme under acronym ESCAPE-NET, registered under grant agreement No 733381, and the Netherlands CardioVascular Research Initiative, Dutch Heart Foundation, Dutch Federation of University Medical Centres, Netherlands Organization for Health Research and Development, Royal Netherlands Academy of Sciences - CVON2017-15 RESCUEd, and CVON2018-30 Predict2. The ARREST registry is supported by an unconditional grant of Stryker, Emergency Care, Redmond, WA USA. Dr. Møller has received grants from Karen Elise Jensens Fond and Helsefonden. Dr. Folke has received grants from the Novo Nordisk Foundation and Laerdal Foundation. Dr. Gislason has received a grant from the Novo Nordisk Foundation. Dr. Torp-Pedersen has received grants from Bayer and Novo Nordisk Foundation. The funders had no access to the data and did not contribute to the preparation of this manuscript.

## Declaration of Competing Interest

The authors declare that they have no known competing financial interests or personal relationships that could have appeared to influence the work reported in this paper.

## Appendix A. Supplementary material

Supplementary data to this article can be found online at <https://doi.org/10.1016/j.resplu.2021.100167>.

## REFERENCES

- Jallow T, Wennberg P, Forslund AS. Temporal variation in out-of-hospital cardiac arrest with validated cardiac cause. *Scand Cardiovasc J: SCJ* 2018;52:149–55. <https://doi.org/10.1080/14017431.2018.1453080>.
- Karlsson LI, Wissenberg M, Fosbol EL, et al. Diurnal variations in incidence and outcome of out-of-hospital cardiac arrest including prior comorbidity and pharmacotherapy: a nationwide study in Denmark. *Resuscitation* 2014;85:1161–8. <https://doi.org/10.1016/j.resuscitation.2014.06.012>.
- Lopez-Messa JB, Alonso-Fernandez JI, Andres-de Llano JM, et al. Circadian rhythm and time variations in out-hospital sudden cardiac arrest. *Medicina intensiva* 2012;36:402–9. <https://doi.org/10.1016/j.medin.2011.11.007>.
- Bagai A, McNally BF, Al-Khatib SM, et al. Temporal differences in out-of-hospital cardiac arrest incidence and survival. *Circulation* 2013;128:2595–602. <https://doi.org/10.1161/circulationaha.113.004164>.
- Ni Y-M, Rusinaru C, Reinier K, et al. Unexpected shift in circadian and septadian variation of sudden cardiac arrest: the Oregon Sudden Unexpected Death Study. *Heart Rhythm* 2019. <https://doi.org/10.1016/j.hrthm.2018.08.034>.
- Patton KK, Hellkamp AS, Lee KL, et al. Unexpected deviation in circadian variation of ventricular arrhythmias: the SCD-HeFT (Sudden Cardiac Death in Heart Failure Trial). *J Am Coll Cardiol* 2014;63:2702–8. <https://doi.org/10.1016/j.jacc.2013.11.072>.
- Fabbian F, Bhatia S, De Giorgi A, et al. Circadian periodicity of ischemic heart disease: a systematic review of the literature. *Heart Failure Clin* 2017;13:673–80. <https://doi.org/10.1016/j.hfc.2017.05.003>.
- Kim HO, Kim JM, Woo JS, et al. Circadian distribution of acute myocardial infarction in different age groups. *Am J Cardiol* 2018;121:1279–84. <https://doi.org/10.1016/j.amjcard.2018.02.006>.
- Portaluppi F, Hermida RC. Circadian rhythms in cardiac arrhythmias and opportunities for their chronotherapy. *Adv Drug Deliv Rev* 2007;59:940–51. <https://doi.org/10.1016/j.addr.2006.10.011>.
- Khaper N, Bailey CDC, Ghugre NR, et al. Implications of disturbances in circadian rhythms for cardiovascular health: a new frontier in free radical biology. *Free Radical Biol Med* 2018;119:85–92. <https://doi.org/10.1016/j.freeradbiomed.2017.11.006>.
- Martino TA, Young ME. Influence of the cardiomyocyte circadian clock on cardiac physiology and pathophysiology. *J Biol Rhythms* 2015;30:183–205. <https://doi.org/10.1177/0748730415575246>.
- Brooks SC, Schmicker RH, Rea TD, et al. Out-of-hospital cardiac arrest frequency and survival: evidence for temporal variability. *Resuscitation* 2010;81:175–81. <https://doi.org/10.1016/j.resuscitation.2009.10.021>.
- Ro YS, Shin SD, Song KJ, Kim JY, Lee EJ, Lee YJ, Ahn KO, Hong KJ, Lu S-N. Risk of diabetes mellitus on incidence of out-of-hospital cardiac arrests: a case-control study. *PLOS ONE* 2016;11:e0154245. <https://doi.org/10.1371/journal.pone.0154245>.
- Jouven X, Lemaître RN, Rea TD, et al. Diabetes, glucose level, and risk of sudden cardiac death. *Eur Heart J* 2005;26:2142–7.
- Zaccardi F, Khan H, Laukkanen JA. Diabetes mellitus and risk of sudden cardiac death: a systematic review and meta-analysis. *Int J Cardiol* 2014;177:535–7. <https://doi.org/10.1016/j.ijcard.2014.08.105>.
- Gubin DG, Nelaeva AA, Uzhakova AE, et al. Disrupted circadian rhythms of body temperature, heart rate and fasting blood glucose in prediabetes and type 2 diabetes mellitus. *Chronobiol Int* 2017;34:1136–48. <https://doi.org/10.1080/07420528.2017.1347670>.
- Bernardi J, Aromolaran KA, Zhu H, et al. Circadian mechanisms: cardiac ion channel remodeling and arrhythmias. *Front Physiol* 2020;11:611860. <https://doi.org/10.3389/fphys.2020.611860>.
- Perin PC, Maule S, Quadri R. Sympathetic nervous system, diabetes, and hypertension. *Clin Exp Hypertens* 2001;23:45–55. <https://doi.org/10.1081/CEH-100001196>.
- Astrup AS, Nielsen FS, Rossing P, et al. Predictors of mortality in patients with type 2 diabetes with or without diabetic nephropathy: a follow-up study. *J Hypertens* 2007;25:2479–85.

20. Chow E, Bernjak A, Williams S, et al. Risk of cardiac arrhythmias during hypoglycemia in patients with type 2 diabetes and cardiovascular risk. *Diabetes* 2014;63:1738–47. <https://doi.org/10.2337/db13-0468>.
21. Naas AA, Davidson NC, Thompson C, et al. QT and QTc dispersion are accurate predictors of cardiac death in newly diagnosed non-insulin dependent diabetes: cohort study. *Bmj* 1998;316:745–6. <https://doi.org/10.1136/bmj.316.7133.745>.
22. Kahn JK, Sisson JC, Vinik AI. QT interval prolongation and sudden cardiac death in diabetic autonomic neuropathy. *J Clin Endocrinol Metab* 1987;64:751–4.
23. Bernardi L, Ricordi L, Lazzari P, et al. Impaired circadian modulation of sympathovagal activity in diabetes. A possible explanation for altered temporal onset of cardiovascular disease. *Circulation* 1992;86:1443–52.
24. Zarich S, Waxman S, Freeman RT, Mittleman M, Hegarty P, Nesto RW. Effect of autonomic nervous system dysfunction on the circadian pattern of myocardial ischemia in diabetes mellitus. *JACC* 1994;24:956–62. [https://doi.org/10.1016/0735-1097\(94\)90855-9](https://doi.org/10.1016/0735-1097(94)90855-9).
25. Cosentino F, Grant PJ, Aboyans V, et al. 2019 ESC Guidelines on diabetes, pre-diabetes, and cardiovascular diseases developed in collaboration with the EASD: The Task Force for diabetes, pre-diabetes, and cardiovascular diseases of the European Society of Cardiology (ESC) and the European Association for the Study of Diabetes (EASD). *Eur Heart J* 2020;41:255–323.
26. Blom MT, van Hoeijen DA, Bardai A, et al. Genetic, clinical and pharmacological determinants of out-of-hospital cardiac arrest: rationale and outline of the Amsterdam Resuscitation Studies (ARREST) registry. *Open Heart* 2014;1:e000112. <https://doi.org/10.1136/openhrt-2014-000112>.
27. Wissenberg M, Hansen CM, Folke F, et al. Survival after out-of-hospital cardiac arrest in relation to sex: a nationwide registry-based study. *Resuscitation* 2014;85:1212–8. <https://doi.org/10.1016/j.resuscitation.2014.06.008>.
28. Pedersen CB. The Danish civil registration system. *Scand J Public Health* 2011;39:22–5.
29. Lynge E, Sandegaard JL, Rebolj M. The Danish national patient register. *Scand J Public Health* 2011;39:30–3.
30. Schmidt M, Schmidt SAJ, Sandegaard JL, et al. The Danish National Patient Registry: a review of content, data quality, and research potential. *Clin Epidemiol* 2015;7:449.
31. Wallach Kildemoes H, Toft Sørensen H, Hallas J. The Danish national prescription registry. *Scand J Public Health* 2011;39:38–41.
32. Pottegård A, Schmidt SAJ, Wallach-Kildemoes H, et al. Data resource profile: the Danish national prescription registry. *Int J Epidemiol* 2017;46:798.
33. Tan HL, van Dongen LH, Zimmerman DS. Sudden cardiac death in young patients with diabetes: a call to study additional causes beyond ischaemic heart disease. *Eur Heart J* 2020;41:2707–9. <https://doi.org/10.1093/eurheartj/ehaa011>.
34. Perkins GD, Jacobs IG, Nadkarni VM, et al. Cardiac Arrest and Cardiopulmonary Resuscitation Outcome Reports: Update of the Utstein Resuscitation Registry Templates for Out-of-Hospital Cardiac Arrest: A Statement for Healthcare Professionals From a Task Force of the International Liaison Committee on Resuscitation (American Heart Association, European Resuscitation Council, Australian and New Zealand Council on Resuscitation, Heart and Stroke Foundation of Canada, InterAmerican Heart Foundation, Resuscitation Council of Southern Africa, Resuscitation Council of Asia); and the American Heart Association Emergency Cardiovascular Care Committee and the Council on Cardiopulmonary, Critical Care, Perioperative and Resuscitation. *Resuscitation* 2015;96:328–40. <https://doi.org/10.1016/j.resuscitation.2014.11.002>.
35. Black N, D'Souza A, Wang Y, et al. Circadian rhythm of cardiac electrophysiology, arrhythmogenesis, and the underlying mechanisms. *Heart Rhythm* 2019;16:298–307. <https://doi.org/10.1016/j.hrthm.2018.08.026>.
36. Cornelissen G. Cosinor-based rhythmometry. *Theor Biol Med Model* 2014;11.
37. Refinetti R, Cornelissen G, Halberg F. Procedures for numerical analysis of circadian rhythms. *Biol Rhythm Res* 2007;38:275–325. <https://doi.org/10.1080/09291010600903692>.
38. Team; RC. R: A Language and Environment for Statistical Computing (Version 3.5. 2, R Foundation for Statistical Computing, Vienna, Austria, 2018); 2019.
39. Albackr HB, AlHabib KF, AlShamiri MQ, et al. Circadian rhythm and ST-segment elevation myocardial infarction: insights from the third gulf registry of acute coronary events (Gulf RACE-3Ps). *Angiology* 2019;70:352–60. <https://doi.org/10.1177/0003319718797470>.
40. Nagarajan V, Fonarow GC, Ju C, et al. Seasonal and circadian variations of acute myocardial infarction: findings from the Get With The Guidelines-Coronary Artery Disease (GWTG-CAD) program. *Am Heart J* 2017;189:85–93. <https://doi.org/10.1016/j.ahj.2017.04.002>.
41. Salah M, Gevaert S, Coussement P, et al. Vulnerability to cardiac arrest in patients with ST elevation myocardial infarction: is it time or patient dependent? Results from a nationwide observational study. *Eur Heart J Acute Cardiovasc Care* 2020;9:S153–60. <https://doi.org/10.1177/2048872619872127>.
42. Kanth R, Ittaman S, Rezkalla S. Circadian patterns of ST elevation myocardial infarction in the new millennium. *Clin Med Res* 2013;11:66–72.
43. Tanaka T, Fujita M, Fudo T, et al. Modification of the circadian variation of symptom onset of acute myocardial infarction in diabetes mellitus. *Coron Artery Dis* 1995;6:241–4.