



Aalborg Universitet

AALBORG UNIVERSITY
DENMARK

Toolbox for creativity

Byrge, Christian; Hansen, Søren

Publication date:
2011

Document Version
Early version, also known as pre-print

[Link to publication from Aalborg University](#)

Citation for published version (APA):
Byrge, C. (Producer), & Hansen, S. (Producer). (2011). Toolbox for creativity. 2D/3D (psysical products)

General rights

Copyright and moral rights for the publications made accessible in the public portal are retained by the authors and/or other copyright owners and it is a condition of accessing publications that users recognise and abide by the legal requirements associated with these rights.

- Users may download and print one copy of any publication from the public portal for the purpose of private study or research.
- You may not further distribute the material or use it for any profit-making activity or commercial gain
- You may freely distribute the URL identifying the publication in the public portal -

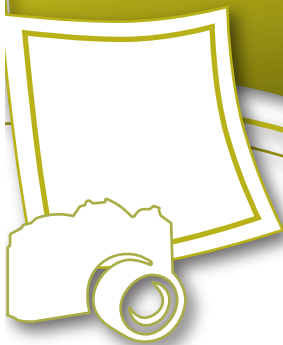
Take down policy

If you believe that this document breaches copyright please contact us at vbn@aub.aau.dk providing details, and we will remove access to the work immediately and investigate your claim.

PLAYING CARD

PICTURE

4

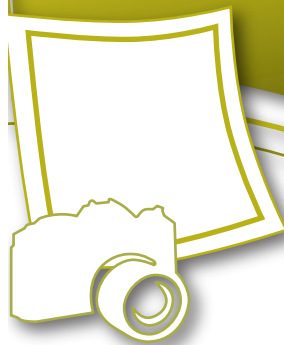


©KREATIVITETSLABORATORIET

PLAYING CARD

PICTURE

4

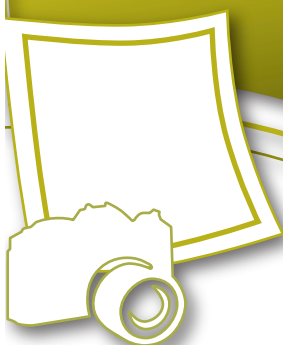


©KREATIVITETSLABORATORIET

PLAYING CARD

PICTURE

4

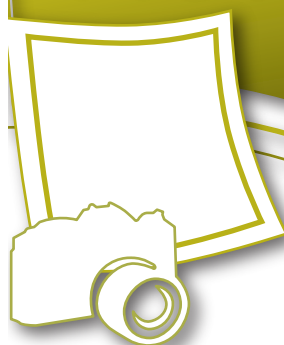


©KREATIVITETSLABORATORIET

PLAYING CARD

PICTURE

4

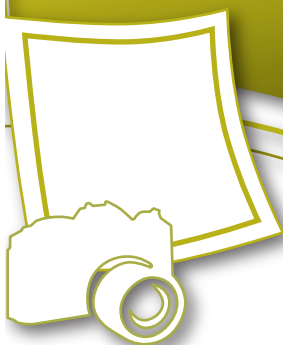


©KREATIVITETSLABORATORIET

PLAYING CARD

PICTURE

4

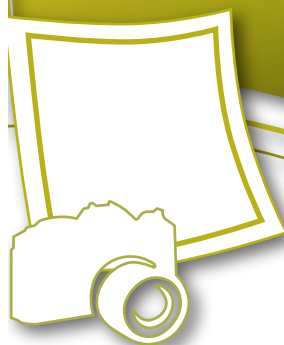


©KREATIVITETSLABORATORIET

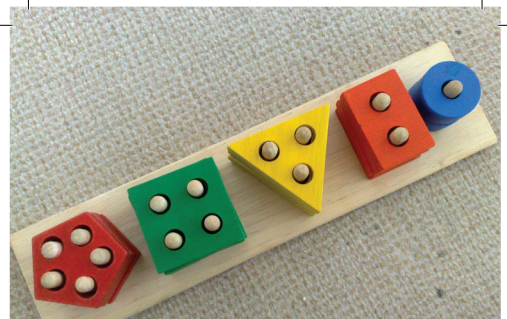
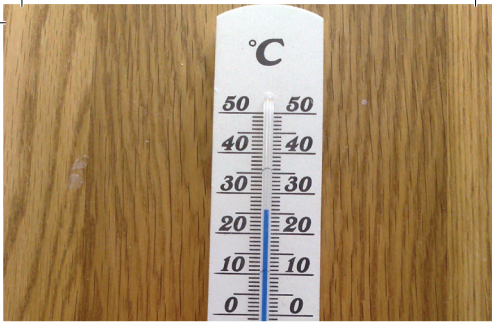
PLAYING CARD

PICTURE

4



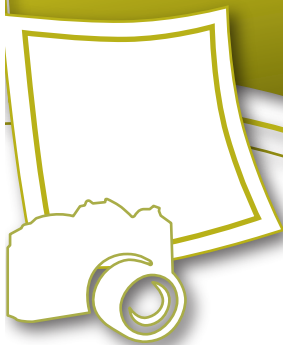
©KREATIVITETSLABORATORIET



PLAYING CARD

PICTURE

4



©KREATIVITETSLABORATORIET

PLAYING CARD

PICTURE

4



©KREATIVITETSLABORATORIET

PLAYING CARD

WORD

4



©KREATIVITETSLABORATORIET

PLAYING CARD

WORD

4



©KREATIVITETSLABORATORIET

PLAYING CARD

WORD

4



©KREATIVITETSLABORATORIET

PLAYING CARD

WORD

4



©KREATIVITETSLABORATORIET



©KREATIVITETSLABORATORIET

WORD

STEAM BATH

©KREATIVITETSLABORATORIET

WORD

LIPSTICK

©KREATIVITETSLABORATORIET



©KREATIVITETSLABORATORIET

WORD

POTATO

©KREATIVITETSLABORATORIET

WORD

EXAM

©KREATIVITETSLABORATORIET

PLAYING CARD
WORD

4



© KREATIVITETSLABORATORIET

PLAYING CARD
WORD

4



© KREATIVITETSLABORATORIET

PLAYING CARD
WORD

4



© KREATIVITETSLABORATORIET

PLAYING CARD
WORD

4



© KREATIVITETSLABORATORIET

PLAYING CARD
WORD

4



© KREATIVITETSLABORATORIET

PLAYING CARD
WORD

4



© KREATIVITETSLABORATORIET

WORD

TRAIN



©KREATIVITETSLABORATORIET

WORD

WOOD



©KREATIVITETSLABORATORIET

WORD

STAMP



©KREATIVITETSLABORATORIET

WORD

POST OFFICE



©KREATIVITETSLABORATORIET

WORD

LIGHTER



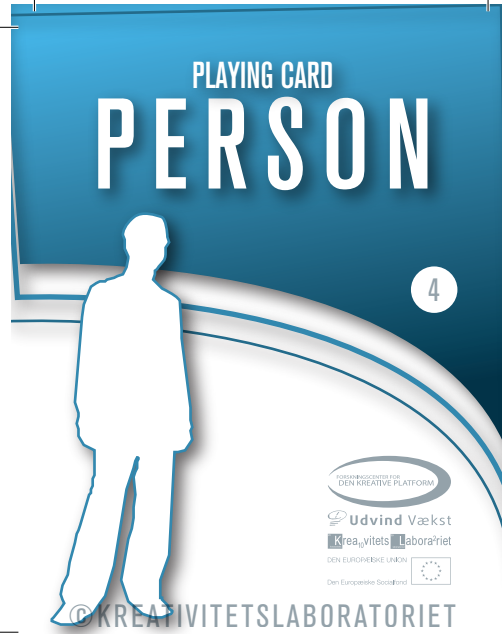
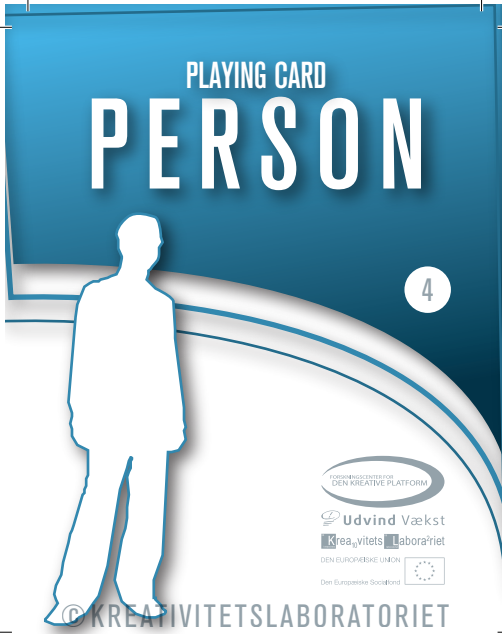
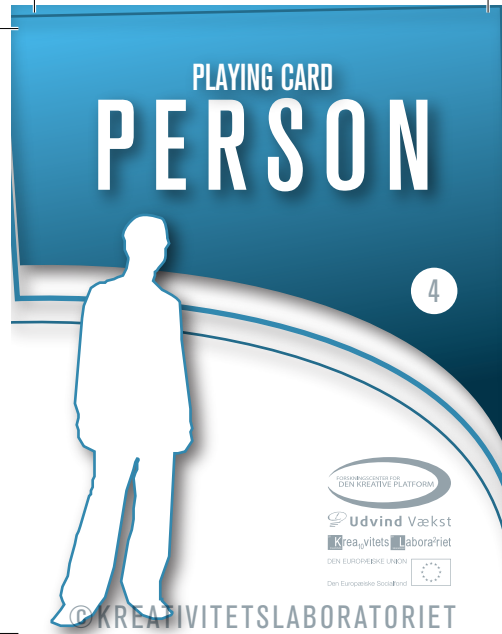
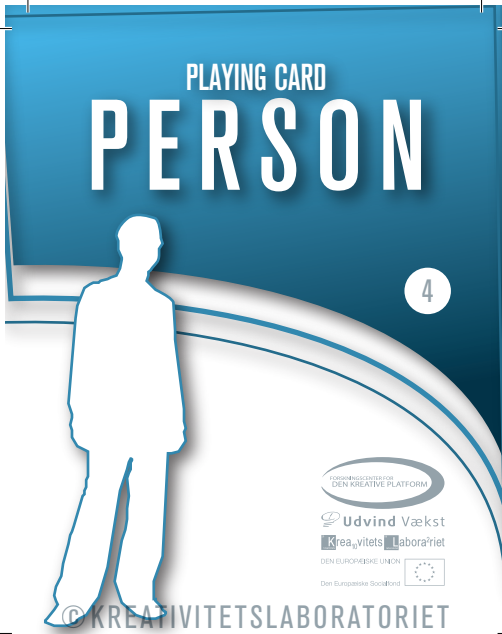
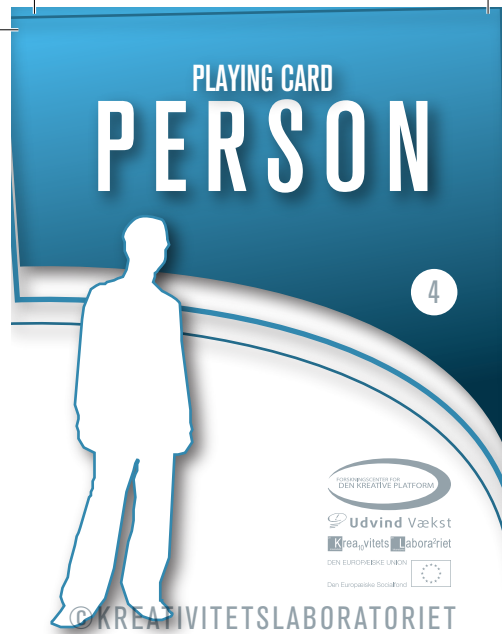
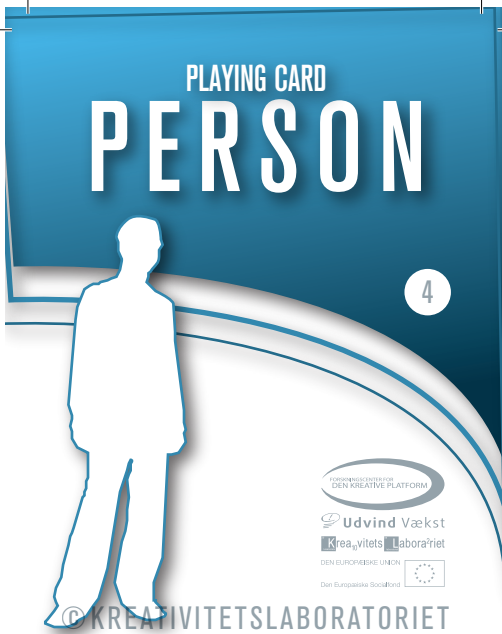
©KREATIVITETSLABORATORIET

WORD

ERROR



©KREATIVITETSLABORATORIET



PERSON



IF AN **ARCHAEOLOGIST** WAS HIRED TO SOLVE THIS PROBLEM, WHAT IDEAS WOULD SHE COME UP WITH?

©KREATIVITETSLABORATORIET

PERSON



IF A **CONTROLLER** WAS HIRED TO SOLVE THIS PROBLEM, WHAT IDEAS WOULD HE COME UP WITH?

©KREATIVITETSLABORATORIET

PERSON



IF A **CONSERVATOR** WAS HIRED TO SOLVE THIS PROBLEM, WHAT IDEAS WOULD SHE COME UP WITH?

©KREATIVITETSLABORATORIET

PERSON



IF A **PSYCHOLOGIST** WAS HIRED TO SOLVE THIS PROBLEM, WHAT IDEAS WOULD HE COME UP WITH?

©KREATIVITETSLABORATORIET

PERSON



IF AN **ASTRONOMER** WAS HIRED TO SOLVE THIS PROBLEM, WHAT IDEAS WOULD SHE COME UP WITH?

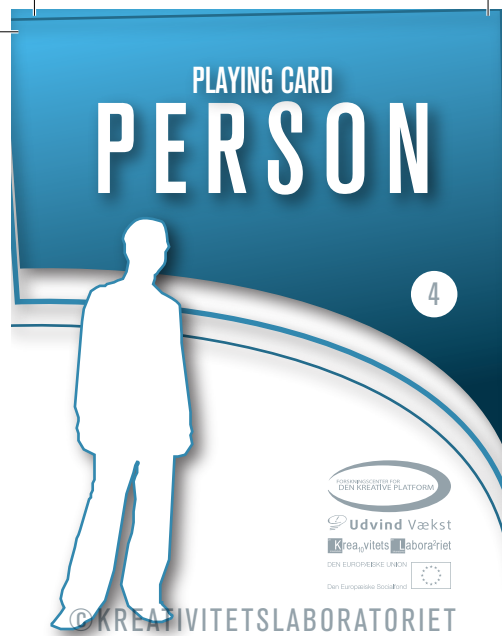
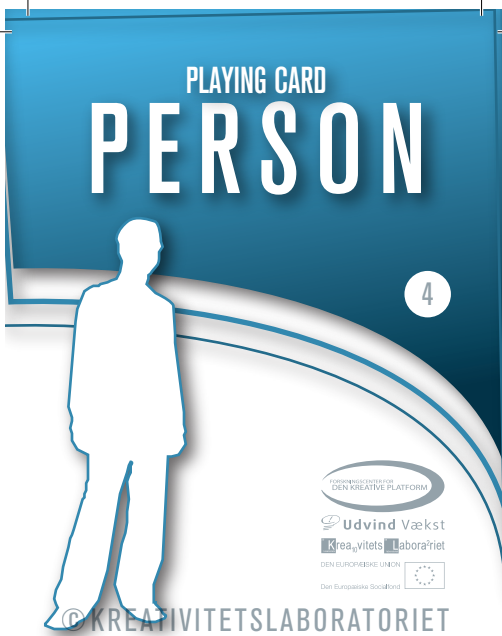
©KREATIVITETSLABORATORIET

PERSON



IF A **WRITER** WAS HIRED TO SOLVE THIS PROBLEM, WHAT IDEAS WOULD SHE COME UP WITH?

©KREATIVITETSLABORATORIET



PERSON



IF A **BEAUTICIAN** WAS HIRED TO SOLVE THIS PROBLEM, WHAT IDEAS WOULD HE COME UP WITH?

PERSON



IF A **PEDAGOGUE** WAS HIRED TO SOLVE THIS PROBLEM, WHAT IDEAS WOULD SHE COME UP WITH?

©KREATIVITETSLABORATORIET

CHALLENGE



THE SOLUTION SHOULD BE ABLE TO BE USED BY A BLIND PERSON

©KREATIVITETSLABORATORIET

CHALLENGE



THE SOLUTION MUST BE ABLE TO BE DONE BY EXACTLY 100 PEOPLE

©KREATIVITETSLABORATORIET

CHALLENGE



THE SOLUTION SHOULD BE USED AS A STOOL

©KREATIVITETSLABORATORIET

CHALLENGE

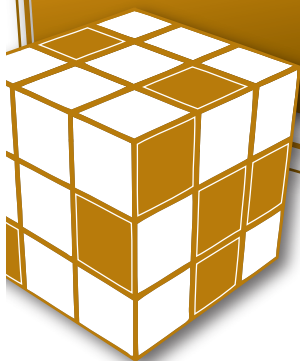


THE SOLUTION MUST BE POISONOUS TO THE TOUCH

©KREATIVITETSLABORATORIET

©KREATIVITETSLABORATORIET

PLAYING CARD
CHALLENGE

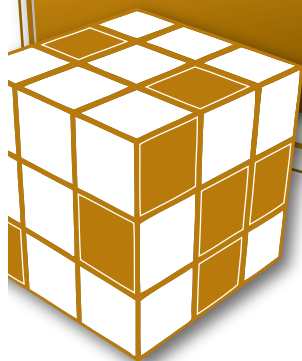


4



©KREATIVITETSLABORATORIET

PLAYING CARD
CHALLENGE

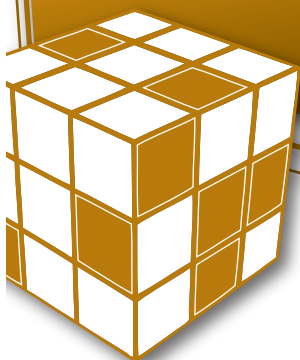


4



©KREATIVITETSLABORATORIET

PLAYING CARD
CHALLENGE

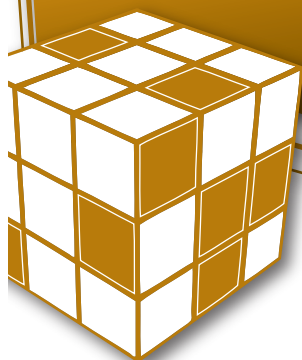


4



©KREATIVITETSLABORATORIET

PLAYING CARD
CHALLENGE



4



©KREATIVITETSLABORATORIET

PLAYING CARD
UP-SIDE-DOWN



4



©KREATIVITETSLABORATORIET

PLAYING CARD
UP-SIDE-DOWN



4



©KREATIVITETSLABORATORIET

CHALLENGE



THE SOLUTION SHOULD BE USED BY A BUS DRIVER

©KREATIVITETSLABORATORIET

CHALLENGE



THE SOLUTION SHOULD BE USED AS A CHAIR

©KREATIVITETSLABORATORIET

UP-SIDE-DOWN



WHY IS AN ANT TALLER THAN A SHOVEL?

©KREATIVITETSLABORATORIET

CHALLENGE



THE SOLUTION MUST BE ABLE TO BE DONE BY EXACTLY TWO PEOPLE

©KREATIVITETSLABORATORIET

CHALLENGE



THE SOLUTION MUST BE GLOBALLY ACCESSIBLE

©KREATIVITETSLABORATORIET

UP-SIDE-DOWN



WHY IS A MATCHSTICK WIDER THAN A SUBMARINE?

©KREATIVITETSLABORATORIET

PLAYING CARD
UP-SIDE-DOWN

4



©KREATIVITETSLABORATORIET

PLAYING CARD
UP-SIDE-DOWN

4



©KREATIVITETSLABORATORIET

PLAYING CARD
UP-SIDE-DOWN

4



©KREATIVITETSLABORATORIET

PLAYING CARD
UP-SIDE-DOWN

4



©KREATIVITETSLABORATORIET

PLAYING CARD
UP-SIDE-DOWN

4



©KREATIVITETSLABORATORIET

PLAYING CARD
UP-SIDE-DOWN

4



©KREATIVITETSLABORATORIET

UP-SIDE-DOWN



WHY IS A GARBAGE CAN HOTTER THAN AN IRON?

©KREATIVITETSLABORATORIET

UP-SIDE-DOWN



WHY IS A HORSE LOWER THAN A MOUSE?

©KREATIVITETSLABORATORIET

UP-SIDE-DOWN



WHY IS A DUMP NICER THAN A ROSE PARK?

©KREATIVITETSLABORATORIET

UP-SIDE-DOWN



WHY IS A SPOON LARGER THAN A MOUNTAIN?

©KREATIVITETSLABORATORIET

UP-SIDE-DOWN



WHY IS A BORDER SMALLER THAN A WATER BALLOON?

©KREATIVITETSLABORATORIET

UP-SIDE-DOWN



WHY IS A DOLLHOUSE BIGGER THAN A BUS?

©KREATIVITETSLABORATORIET

PLAYING CARD

PRINCIPLE

4



©KREATIVITETSLABORATORIET

PLAYING CARD

PRINCIPLE

4



©KREATIVITETSLABORATORIET

PLAYING CARD

PRINCIPLE

4



©KREATIVITETSLABORATORIET

PLAYING CARD

PRINCIPLE

4



©KREATIVITETSLABORATORIET

PLAYING CARD

PRINCIPLE

4



©KREATIVITETSLABORATORIET

PLAYING CARD

PRINCIPLE

4



©KREATIVITETSLABORATORIET

PRINCIPLE

APPLY THE PRINCIPLE OF AN
ENCYCLOPEDIA IN THE SOLUTION

©KREATIVITETSLABORATORIET

PRINCIPLE

APPLY THE PRINCIPLE OF
"FRAGMENTATION" IN THE SOLUTION

©KREATIVITETSLABORATORIET

PRINCIPLE

APPLY THE PRINCIPLE OF A MICROSCOPE IN
THE SOLUTION

©KREATIVITETSLABORATORIET

PRINCIPLE

APPLY THE PRINCIPLE THAT PERSONS BOTH
WITH AND WITHOUT TRAINING CAN USE THE
SOLUTION

©KREATIVITETSLABORATORIET

PRINCIPLE

APPLY PRINCIPLES OF VIBRATION IN THE
SOLUTION

©KREATIVITETSLABORATORIET

PRINCIPLE

APPLY THE PRINCIPLE THAT PERSONS BOTH
WITH AND WITHOUT LANGUAGE CAN USE
THE SOLUTION

©KREATIVITETSLABORATORIET

PLAYING CARD

PRINCIPLE

4



©KREATIVITETSLABORATORIET

PRINCIPLE

APPLY THE PRINCIPLE OF EMPHASIZING THE STRONGEST ELEMENTS OF THE SOLUTION

©KREATIVITETSLABORATORIET

PLAYING CARD

PRINCIPLE

4



©KREATIVITETSLABORATORIET

PRINCIPLE

APPLY THE PRINCIPLE OF "NO ACCESS" IN THE SOLUTION

©KREATIVITETSLABORATORIET