



Aalborg Universitet

AALBORG UNIVERSITY
DENMARK

Musculoskeletal misdiagnoses in children with brain tumors

A nationwide, multicenter case-control study

Hallundbæk, Laura; Hagstrøm, Søren; Mathiasen, Rene; Herlin, Troels; Hasle, Henrik; Weile, Kathrine Synne; Amstrup, Jesper; Brix, Ninna

Published in:
PLOS ONE

DOI (link to publication from Publisher):
[10.1371/journal.pone.0279549](https://doi.org/10.1371/journal.pone.0279549)

Creative Commons License
CC BY 4.0

Publication date:
2023

Document Version
Publisher's PDF, also known as Version of record

[Link to publication from Aalborg University](#)

Citation for published version (APA):
Hallundbæk, L., Hagstrøm, S., Mathiasen, R., Herlin, T., Hasle, H., Weile, K. S., Amstrup, J., & Brix, N. (2023). Musculoskeletal misdiagnoses in children with brain tumors: A nationwide, multicenter case-control study. *PLOS ONE*, 18(6 June), Article e0279549. <https://doi.org/10.1371/journal.pone.0279549>

General rights

Copyright and moral rights for the publications made accessible in the public portal are retained by the authors and/or other copyright owners and it is a condition of accessing publications that users recognise and abide by the legal requirements associated with these rights.

- Users may download and print one copy of any publication from the public portal for the purpose of private study or research.
- You may not further distribute the material or use it for any profit-making activity or commercial gain
- You may freely distribute the URL identifying the publication in the public portal -

Take down policy

If you believe that this document breaches copyright please contact us at vbn@aub.aau.dk providing details, and we will remove access to the work immediately and investigate your claim.

RESEARCH ARTICLE

Musculoskeletal misdiagnoses in children with brain tumors: A nationwide, multicenter case-control study

Laura Hallundbæk¹, Søren Hagstrøm¹, Rene Mathiasen², Troels Herlin³, Henrik Hasle³, Kathrine Synne Weile³, Jesper Amstrup¹, Ninna Brix^{1*}

1 Department of Pediatric and Adolescent Medicine, Aalborg University Hospital, Aalborg, Denmark, **2** Department of Pediatric and Adolescent Medicine, Rigshospitalet, Copenhagen, Denmark, **3** Department of Pediatric and Adolescent Medicine, Aarhus University Hospital, Aarhus, Denmark

* ninna.brix@rn.dk



Abstract

Objective

Childhood brain tumors belong to the cancer type with the longest diagnostic delay, the highest health care utilization prior to diagnosis, and the highest burden of long-term sequelae. We aimed to clarify whether prior musculoskeletal diagnoses in childhood brain cancer were misdiagnoses and whether it affected the diagnostic delay.

Study design

In this retrospective, chart-reviewed case-control study we compared 28 children with brain tumors and a prior musculoskeletal diagnosis to a sex and age-matched control group of 56 children with brain tumors and no prior musculoskeletal diagnosis. Using the Danish registries, the cases were identified from consecutive cases of childhood brain cancers in Denmark over 23 years (1996–2018).

Results

Of 931 children with brain tumors, 3% (28/931) had a prior musculoskeletal diagnosis, of which 39% (11/28) were misdiagnoses. The misdiagnoses primarily included torticollis-related diagnoses which tended to a longer time interval from first hospital contact until a specialist was involved: 35 days (IQR 6–166 days) compared to 3 days (IQR 1–48 days), $p = 0.07$. When comparing the 28 children with a prior musculoskeletal diagnosis with a matched control group without a prior musculoskeletal diagnosis, we found no difference in the non-musculoskeletal clinical presentation, the diagnostic time interval, or survival. Infratentorial tumor location was associated with a seven-fold risk of musculoskeletal misdiagnosis compared to supratentorial tumor location.

OPEN ACCESS

Citation: Hallundbæk L, Hagstrøm S, Mathiasen R, Herlin T, Hasle H, Weile KS, et al. (2023) Musculoskeletal misdiagnoses in children with brain tumors: A nationwide, multicenter case-control study. *PLoS ONE* 18(6): e0279549. <https://doi.org/10.1371/journal.pone.0279549>

Editor: Sethu Thakachy Subha, University Putra Malaysia, MALAYSIA

Received: December 9, 2022

Accepted: April 8, 2023

Published: June 23, 2023

Peer Review History: PLOS recognizes the benefits of transparency in the peer review process; therefore, we enable the publication of all of the content of peer review and author responses alongside final, published articles. The editorial history of this article is available here: <https://doi.org/10.1371/journal.pone.0279549>

Copyright: © 2023 Hallundbæk et al. This is an open access article distributed under the terms of the [Creative Commons Attribution License](https://creativecommons.org/licenses/by/4.0/), which permits unrestricted use, distribution, and reproduction in any medium, provided the original author and source are credited.

Data Availability Statement: All relevant data are within the paper and its [Supporting Information](#) files.

Funding: The study was funded by the Arvid Nilsson's foundation(1780631), Børnecancerfonden (2017-1945 and 2020-6653), Ølufgard Memorial Fund (25734), and Aarhus University. No sponsors or funders (other than the named authors) played any role in study design, data collection and analysis, decision to publish or preparation of the manuscript.

Competing interests: The authors have declared that no competing interests exist.

Abbreviations: CNS, Central nervous system; DCCR, Danish Childhood Cancer Registry; DNPR, The Danish National Patient Registry; IQR, interquartile range.

Conclusion

Musculoskeletal misdiagnoses were rare in children with brain tumors and had no significant association to the diagnostic time interval or survival. The misdiagnoses consisted primarily of torticollis- or otherwise neck-related diagnoses.

Introduction

Among childhood cancers, brain tumors are the most common type of solid tumors and the leading cause of death [1,2]. The overall survival rate has shown improvements over the last decade, now approaching a five-year survival of 83% in Denmark [3]. However, it is still below the average of 86% for other childhood cancers [4]. Pediatric brain tumors are considered among the cancer types with the longest diagnostic delay and the highest healthcare utilization prior to diagnosis [5–9]. Further, survivors of brain tumors face the highest disease burden of long-term effects with substantial morbidity, including increased risk of subsequent tumors and neurocognitive deficits, markedly reducing their quality of life [10–14].

Brain tumors have rarely been described with musculoskeletal symptoms other than gait disturbances or neck pain [15–18]. Though, considering the whole spectrum of childhood cancers, musculoskeletal symptoms at debut have been found in up to 25% and musculoskeletal diagnoses in 7–12% [19–21]. Musculoskeletal misdiagnoses have primarily been described in children with leukemia and lymphomas [19,22], and only a few cases of musculoskeletal misdiagnoses in children with brain tumors have been described [21,23,24]. A recently published nationwide registry-based cohort study by our group, including all children with cancer in Denmark over 23 years, identified a musculoskeletal diagnosis prior to the diagnosis of cancer in 4% (33/931) with brain tumors, [20].

In the present study, the children registered with prior musculoskeletal diagnoses (cases) were compared to age, sex, and cancer-matched controls as we aimed to evaluate if they differed regarding the clinical presentation, diagnostic delay, and survival. Secondly, we aimed to clarify whether the prior musculoskeletal diagnoses in children with brain tumors were misdiagnoses and aimed to identify any patterns or red flags.

Materials and methods

Study design

We performed a nationwide, multicenter case-control study collecting data by chart review. The cohort was identified from a nationwide (population of 5.8 million) registry-based cohort study, previously described in detail [20]. All children 0–14 years of age diagnosed with brain tumors in Denmark from January 1, 1996, to December 31, 2018, were identified using The Danish Childhood Cancer Registry (DCCR). The Danish National Patient Registry (DNPR) was used to identify musculoskeletal diagnoses and associated dates recorded within six months preceding the diagnosis of the brain tumor. The children with a prior musculoskeletal diagnosis (cases) were each compared to two sex- and age-matched (+/- 1 year) children with brain cancer but without registered musculoskeletal diagnoses (controls). The musculoskeletal diagnoses were defined as diagnoses from ICD-10 Chapter XIII (diseases of the musculoskeletal system and connective tissue), M00–M99, and the R-diagnosis “Pain, not elsewhere classified” from chapter XVIII (Symptoms, signs, and abnormal clinical and laboratory findings,

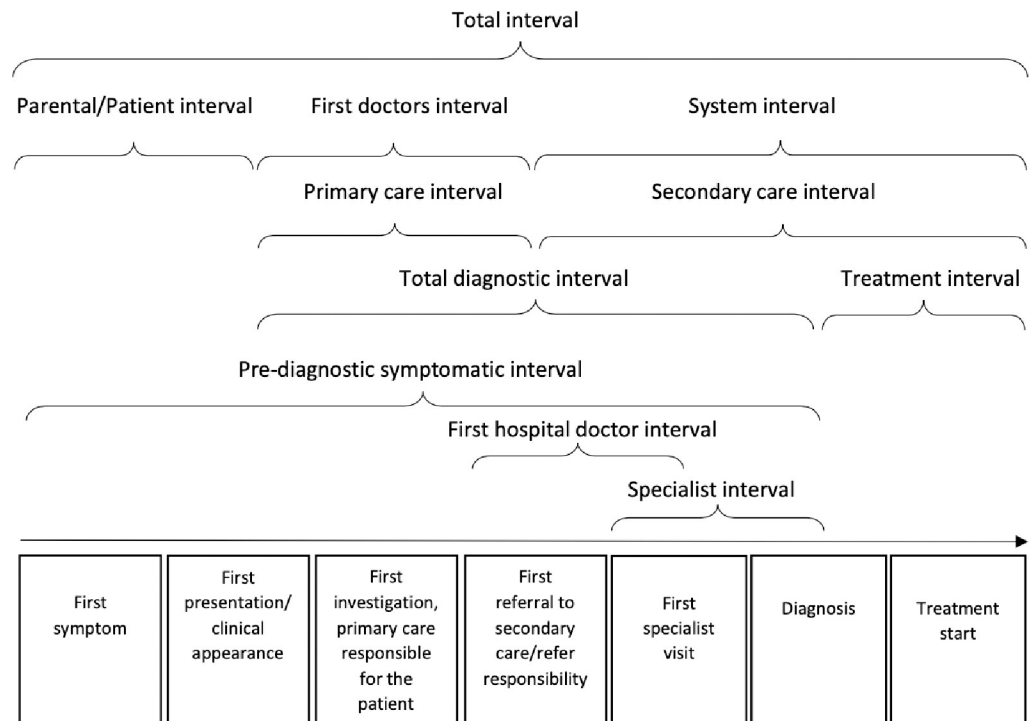


Fig 1. Definition of time intervals. An illustration of the overall milestones and time intervals in the route from the first symptom until the start of treatment.

<https://doi.org/10.1371/journal.pone.0279549.g001>

not elsewhere classified). The diagnoses included were from both hospitalizations, emergency room, and outpatient visits but not from general practitioners [20].

We used a standardized definition of time intervals, including the route from the first symptom until the start of treatment [25]. In addition, three additional time intervals were added: 1) a pre-diagnostic symptomatic interval, i.e., the time from the first symptom until diagnosis. 2) a first hospital doctor interval, i.e., the time from the first hospital contact until a specialist was involved; and 3) a specialist interval, i.e., the time from the specialist was involved until the final cancer diagnosis was made (the specialist was defined as either a pediatric oncologist or neurosurgeon). The time intervals are illustrated in Fig 1.

Data collection

Data were collected by reviewing medical charts from all pediatric departments in Denmark. The following data were collected: age, sex, cancer diagnosis, date of diagnosis, musculoskeletal diagnosis, tumor location and type, metastases, cancer treatment, presence of a musculoskeletal misdiagnosis, medical mistreatment, comorbidities, cause of death, and date of death, last day of follow-up and organ specified sequelae related to cancer and treatment. Further, we collected information on symptoms, objective signs, laboratory values, imaging, and time intervals (including the predefined time intervals). Musculoskeletal misdiagnosis was defined as a musculoskeletal diagnosis causing symptoms later explained by the cancer diagnosis. The date of diagnosis was defined as the day a brain tumor was identified on imaging. If the children with a musculoskeletal diagnosis no longer had musculoskeletal symptoms present at the time of brain cancer diagnosis, the musculoskeletal symptoms were not included in the data collection and the musculoskeletal diagnoses were defined as non-misdiagnoses.

Cases and controls

From January 1996 to December 2018, 931 children aged 0–14 years were diagnosed with brain tumors in Denmark, identified using the Danish Childhood Cancer Registry. Hereof, 33/931 (4%) were registered with a musculoskeletal diagnosis within six months before the diagnosis of the brain tumor, according to data from DNPR. Four patients were excluded during the evaluation of medical charts due to DNPR misclassification and one due to missing records. The positive predictive value of a prior musculoskeletal diagnosis in childhood brain tumors identified from musculoskeletal diagnosis in DNPR was 85% (28/33). The 28 cases with brain tumors and a prior musculoskeletal diagnosis were randomly matched with two controls with brain tumors without musculoskeletal ICD diagnosis having the same sex and age (+/- 1 year) at the time of the brain tumor diagnosis Fig 2.

Statistical analysis

All continuous data were non-normally distributed (evaluated by histograms and QQ-plots), and comparisons were made by Mann Whitney U-test and tabulated with median and interquartile range (IQR). Categorical data were tabulated by prevalence, and Fisher's exact test was used for comparisons. For mortality analysis, we followed patients from the date of cancer diagnosis until death, emigration, or the end of follow-up (September 1, 2021), whichever came first. The Kaplan-Meier method was used to compare the one-and five-year overall survival for the children with a prior musculoskeletal diagnosis versus controls. Logistic regression was used to determine factors associated with a musculoskeletal misdiagnosis. All statistical tests were performed under a two-sided significance level of 0.05. We used STATA V. 17.0 (Stata MP) for the statistical analysis.

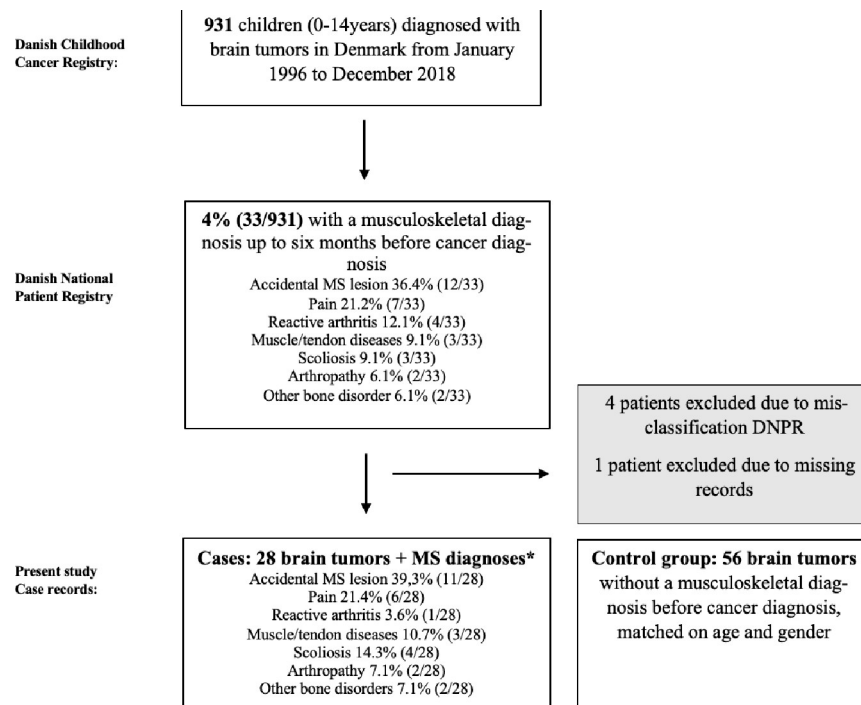


Fig 2. Flow chart of the study population. Flow chart illustration of the total cohort, and the final case group of children with brain tumors and a prior musculoskeletal diagnosis.

<https://doi.org/10.1371/journal.pone.0279549.g002>

Ethics

The Danish Data Protection Agency approved the study on August 31, 2021 (1-45-70-90-21). The reporting of the study was performed according to STROBE, *Strengthening the Reporting of Observational Studies in Epidemiology*, recommendations for case-control studies. For this type of study formal consent is not required.

Results

We compared the 28 children with brain tumors and a prior musculoskeletal diagnosis (cases) to the 56 age- and gender-matched children with brain tumors without a prior musculoskeletal diagnosis (controls), first regarding the tumor characteristics, treatment, sequelae, and death, [Table 1](#). Median age and gender did not differ for the cases versus controls. For the total cohort, the median age was seven years (IQR 4–11) and 46% (39/84) were girls. The prevalence of the cases and controls did not differ when dividing into the two periods, as 64% of the cases and 61% of the controls were diagnosed in the period 1996–2006 ($p = 0.75$) and 39% cases and 36% controls were diagnosed from 2007–2018 ($p = 0.75$). The predominant type of brain tumors was astrocytoma (24%) and medulloblastomas (23%), and 56% of the tumors were malignant, [Table 1](#). The cases and controls did not differ regarding tumor location, type, or grade of tumor, and the treatment modalities were evenly distributed. Also, metastases and comorbidity were equally frequent, [Table 1](#). Though, sequelae were more frequent among the controls 78% (42/54) than in the cases 50% (13/26), $p = 0.01$, [Table 1](#). Sequelae included both sequelae due to treatment and the tumor. The organ-specific location of the sequelae did not differ between the two groups, [Table 1](#). The median follow-up time did not vary for the cases: 13 years (IQR 8–18) and controls: 11 years (IQR 5–17), $p = 0.51$. We found no difference in overall survival comparing the cases and the controls as illustrated in the Kaplan-Meier plot [Fig 3](#).

The cases and controls did not differ regarding first presenting symptoms, neurological symptoms, neurological findings, general symptoms, or the number of affected symptoms [Table 2](#). The most frequent neurological findings were impaired motor or sensory function (17%) and ataxia (12%), [Table 3](#). At the time of the diagnosis of the brain tumor, 14% (8/56) of the controls had musculoskeletal symptoms (though not registered in DNPR) compared to 48% (13/28) of the cases, $p = 0.002$, [Table 2](#). Thereby, half of the cases did no longer have musculoskeletal symptoms at the time of cancer diagnosis and their previous musculoskeletal diagnoses were presumably non-related to the cancer as it either disappeared spontaneously or responded to non-cancer treatment. Torticollis-related symptoms as the first presenting symptom occurred in 14% (4/28) of the cases compared to 2% (1/56) of the controls, $p = 0.02$. The musculoskeletal symptom mainly included neck pain and gait abnormalities. Arthralgia, arthritis, nocturnal pain, or morning stiffness did not occur in any of the groups.

For the analysis of time intervals, six children with a prior diagnosis of neurofibromatosis and one child with tuberous sclerosis prior to the brain tumor diagnosis were excluded, as their comorbidity resulted in routine surveillance imaging and thereby short total time intervals with a median of 0 days (IQR 0–8). The total diagnostic interval did not differ for the cases versus the controls, as illustrated in [Fig 4](#). A total time interval of more than six months occurred in 33% (8/24) of the cases and 42% (22/52) of the controls, $p = 0.61$. The parental and primary care interval accounted for the most significant proportion of the interval being 38 days (IQR 14–174) for the cases and 77 days (IQR 17–273) for the controls, $p = 0.65$. The first hospital doctor interval had wide ranges but a median of just six days (IQR 1–54) for the cases and four days (IQR 1–68) for the controls.

Table 1. The prevalence of the clinical characteristics in the total cohort and the children with brain tumors and a prior musculoskeletal diagnosis (cases) versus age- and gender-matched children with brain tumors without a prior musculoskeletal diagnosis (controls).

	Total cohort N = 84	Cases N = 28	Controls N = 56	P
Tumor location				
Supratentorial tumor	55% (46/84)	50% (14/28)	58% (32/55)	0.64
Infratentorial tumor	45% (37/84)	50% (14/28)	42% (23/55)	0.48
Tumor grade				
Malignant	56% (36/64)	64% (14/22)	52% (22/42)	0.45
Benign	44% (28/64)	36% (8/22)	48% (20/42)	0.63
Tumor type				
Astrocytoma grade 1–2	24% (20/84)	21% (6/28)	25% (14/56)	0.72
Astrocytoma grade 3–4	6% (5/84)	7% (2/28)	5% (3/56)	0.74
Other gliomas	8% (7/84)	11% (3/28)	7% (4/56)	0.58
Medulloblastoma	23% (19/84)	29% (8/28)	20% (11/56)	0.26
Glioblastoma	1% (1/84)	0% (0/28)	2% (1/56)	0.48
Meningioma	1% (1/84)	4% (1/28)	0% (0/56)	0.15
Ependymoma	2% (2/84)	0% (0/28)	4% (2/56)	0.31
Germinal cell tumor	2% (2/84)	0% (0/28)	4% (2/56)	0.31
Craniopharyngioma	7% (4/84)	0% (0/28)	5% (4/56)	0.15
Other tumors	12% (10/84)	14% (4/28)	11% (6/56)	0.63
Unspecified tumor	17% (14/84)	14% (4/28)	18% (10/56)	0.68
Metastases	5% (4/83)	4% (1/28)	6% (3/55)	0.70
Comorbidity	29% (24/84)	39% (11/28)	23% (13/56)	0.12
Treatment				
Surgery	75% (63/84)	79% (22/28)	73% (41/56)	0.59
Radical surgery	47% (29/62)	59% (13/22)	40% (16/40)	0.15
Radiotherapy	43% (36/84)	39% (11/28)	45% (25/56)	0.64
Chemotherapy	46% (39/84)	43% (12/28)	48% (27/56)	0.64
Other primary treatment	27% (22/83)	29% (8/28)	26% (14/55)	0.76
Watchful waiting	17% (14/84)	21% (6/28)	14% (8/56)	0.29
Death related to cancer/side-effects	21% (18/84)	18% (5/28)	23% (13/56)	0.57
Sequelae related to treatment or cancer	70% (55/80)	50% (13/26)	78% (42/54)	0.01
Central nervous system sequelae	48% (40/84)	36% (10/28)	54% (30/56)	0.12
Cardiopulmonary sequelae	0% (0/84)	0% (0/28)	0% (0/56)	-
Gastrointestinal sequelae	1% (1/84)	0% (0/28)	2% (1/56)	0.48
Musculoskeletal sequelae	25% (21/84)	14% (4/28)	30% (17/56)	0.11
Other sequelae	1% (1/84)	0% (0/28)	2% (1/56)	0.48

Other primary treatments included steroids and pressure-relieving operations. Comorbidity was defined as any chronic illness described in the medical charts prior to diagnosis and included illnesses such as asthma and neurofibromatosis. Unspecified tumors included tumors without biopsies to determine the tumor type.

<https://doi.org/10.1371/journal.pone.0279549.t001>

Misdiagnosis occurred in 39% (11/28) of the cases, corresponding to an estimated prevalence of musculoskeletal misdiagnoses in childhood brain tumors of 1% (11/931). Medical mistreatment did not occur in any of the cases. Torticollis-related diagnoses constituted 64% (7/11) and 36% (4/11) were pain-related. Five children were diagnosed (specifically) with torticollis at the age of eight months, one, two, three, and four years, respectively. The remaining two were misdiagnosed with *sequelae after superficial lesion* and *muscle strain* of the neck at the age of four and seven years. The pain-related misdiagnoses included *musculoskeletal pain*, *leg pain*, *back pain*, and *unspecified pain*.

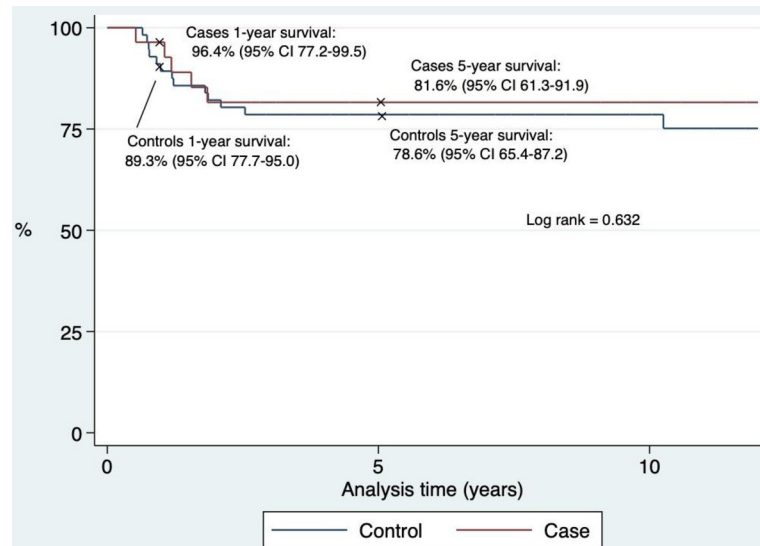


Fig 3. Survival rates. Kaplan-Meier curve of the survival rates of the children with a brain tumor, and a prior musculoskeletal diagnosis (case) versus those with a brain tumor without a prior musculoskeletal diagnosis (control).

<https://doi.org/10.1371/journal.pone.0279549.g003>

The 11 children with a musculoskeletal misdiagnosis were compared to the children without any musculoskeletal misdiagnosis ($n = 73$), including the 17 children with a prior musculoskeletal diagnosis unrelated to the brain tumors, [Table 4](#). The diagnostic interval did not differ for the two groups. The children with a musculoskeletal misdiagnosis had a total interval of 169 days (IQR 57–582) compared to 86 days (IQR 32–397) for the children without a musculoskeletal misdiagnosis, $p = 0.38$. The interval of the first hospital doctor tended to be longer for children with a musculoskeletal misdiagnosis (35 days (IQR 6–166)) compared to 3 days (IQR 1–48) for the group without a musculoskeletal misdiagnosis, $p = 0.07$, [Table 4](#). A total interval above six months occurred in 46% (5/11) of the children with a musculoskeletal misdiagnosis and 39% (25/65) without a musculoskeletal misdiagnosis, $p = 0.45$.

Finally, we controlled for factors associated with a musculoskeletal misdiagnosis and found a seven-fold increased risk of musculoskeletal misdiagnosis in the case of an infratentorial tumor location compared to a supratentorial tumor location, OR 7.1 (95% CI 1.4–35.2). There were no significant associations between musculoskeletal misdiagnosis and tumor type, time interval, neurological symptoms, age, sex, or comorbidity. Though, reservations must be made for sub-analyses carried out on the small numbers.

Discussion

Of 931 children with brain tumors, 3% had a musculoskeletal diagnosis in a period of up to six months prior to the diagnosis of the brain tumor. Hereof 39% (11/28) were misdiagnoses, two-thirds as torticollis-related diagnoses and one-third as pain-related diagnoses. This subgroup tended to have a longer interval from the first hospital contact until a specialist was involved.

In several studies, head tilt has been revealed as a symptom of brain tumors, with a prevalence of between 5–11% [[15,16,26–30](#)]. A smaller study, including 50 children with fossa posterior tumors, revealed that torticollis-related symptoms often were misinterpreted [[31](#)]. Further, few studies have found an increased risk of diagnostic delay in case of torticollis or head tilt as presenting symptoms [[28,32](#)]. In children above one year of age, torticollis should

Table 2. The prevalence of symptoms, and abnormal laboratory values in the total cohort, the children with brain tumors and a prior musculoskeletal diagnosis (cases) versus the children with brain tumors without a prior musculoskeletal diagnosis (controls).

	Total N = 84	Cases N = 28	Controls N = 56	P
First presenting symptom				
Seizure	10% (8/84)	11% (3/28)	9% (5/56)	0.79
Neck pain	2% (2/84)	4% (1/28)	2% (1/56)	0.61
Vomiting	7% (6/84)	7% (2/28)	7% (4/56)	1.00
Headache	27% (23/84)	25% (7/28)	29% (16/56)	0.73
Torticollis-related symptoms	6% (5/84)	14% (4/28)	2% (1/56)	0.02
Visual difficulties	10% (8/84)	11% (3/28)	9% (5/56)	0.79
Impaired sensory or motor function	10% (8/84)	4% (1/28)	13% (7/56)	0.19
Loss of skills	4% (3/84)	7% (2/28)	2% (1/56)	0.21
Growth deficiency	6% (5/84)	0% (0/28)	9% (5/56)	0.10
No symptoms	7% (6/84)	11% (3/28)	5% (3/56)	0.37
Other symptoms	12% (10/84)	7% (2/28)	14% (8/56)	0.34
Musculoskeletal symptoms	26% (21/84)	48% (13/28)	14 (8/56)	0.002
Leg pain	1% (1/84)	4% (1/28)	0% (0/56)	0.15
Gait abnormalities	10% (8/84)	14% (4/28)	7% (4/56)	0.29
Back pain	2% (2/84)	7% (2/28)	0% (0/56)	0.04
Neck pain	8% (7/84)	21% (6/28)	2% (1/56)	0.005
Arthralgia	0% (0/84)	0% (0/28)	0% (0/56)	-
Arthritis	0% (0/84)	0% (0/28)	0% (0/56)	-
Nighttime pain	0% (0/84)	0% (0/28)	0% (0/56)	-
Morning stiffness	0% (0/84)	0% (0/28)	0% (0/56)	-
Unspecified musculoskeletal symptoms	10% (8/84)	18% (5/28)	5% (3/56)	0.07
Neurological symptoms	83% (70/84)	82% (23/28)	84% (47/56)	0.84
Headache	49% (41/84)	46% (13/28)	50% (28/56)	0.76
Dizziness	16% (13/84)	21% (6/28)	13% (7/56)	0.29
Vomiting	44% (37/84)	39% (11/28)	46% (26/56)	0.53
Seizure	12% (10/84)	11% (3/28)	13% (7/56)	0.81
Paresis	11% (9/84)	7% (2/28)	13 (7/56)	0.45
Impaired sensory	6% (5/84)	7% (2/28)	5% (3/56)	0.74
Ataxia	12% (10/84)	18% (5/28)	9% (5/56)	0.23
Visual difficulties	19% (16/84)	14% (4/28)	21% (12/56)	0.43
Other cranial nerve abnormalities	6% (5/84)	4% (1/28)	7% (4/56)	0.51
Developmental delay	7% (6/84)	7% (2/28)	7% (4/56)	1.00
Other	32% (27/84)	39% (11/28)	29% (16/56)	0.32
Positive neurological findings	60% (40/67)	64% (14/22)	58% (26/45)	0.65
Cardio-pulmonary symptoms	1% (1/82)	4% (1/27)	0% (0/55)	0.15
Gastrointestinal symptoms	12% (10/84)	14% (4/28)	11% (6/56)	0.63
General symptoms	28(23/83)	30% (8/27)	27% (15/56)	0.79
Number of symptoms, median	3.0 (2.0;5.0)	2.5 (2.0;5.0)	3.0 (2.0;5.0)	0.33
Affected laboratory values	11% (9/84)	11% (3/28)	11% (6/56)	1.0

Cardio-pulmonary symptoms included dyspnea, chest pain, palpitations, and others. Gastrointestinal symptoms included abdominal pain, diarrhea, vomiting, nausea, and others. General symptoms included fatigue, weight loss, and anorexia.

<https://doi.org/10.1371/journal.pone.0279549.t002>

Table 3. The prevalence of the neurological findings in the total cohort, the children with brain tumors and a prior musculoskeletal diagnosis (cases) versus the children with brain tumors without a prior musculoskeletal diagnosis (controls).

Neurological findings	Total N = 84	Cases N = 28	Controls N = 56	P
Impaired motor or sensory function	17% (14/84)	14% (4/28)	18% (10/56)	0.68
Cerebellar impairment	4% (3/84)	4% (1/28)	4% (2/56)	1.00
Papillary edema	7% (6/84)	7% (2/28)	7% (4/56)	1.00
Ataxia	12% (10/84)	28% (5/28)	9% (5/56)	0.23
Affected vision	8% (7/84)	11% (3/28)	7% (4/56)	0.58
Cranial nerve impairment	5% (4/84)	4% (1/28)	5% (3/56)	0.72
Insecure gait	5% (4/84)	7% (2/28)	4% (2/56)	0.47
Nystagmus	2% (2/84)	4% (1/28)	2% (1/56)	0.61
Tremor	5% (4/84)	0% (0/28)	7% (4/56)	0.15
Other	13% (10/84)	21% (6/28)	7% (4/56)	0.06

<https://doi.org/10.1371/journal.pone.0279549.t003>

alert the physician and result in a thorough investigation, including imaging, to rule out a brain tumor [33,34].

The pre-diagnostic symptomatic interval (time from the first symptom until diagnosis) has been investigated in multiple studies over time, revealing median intervals ranging from 21 to 100 days [9,16,18,27,30,32,35–40]. In the present study, the median pre-diagnostic symptomatic interval was 87 days for the total cohort and 168 days for the subgroup with a musculoskeletal misdiagnosis, though with no statistical significance.

One might hypothesize that malignant and fast-growing tumors would increase the risk of musculoskeletal symptoms as a consequence of a higher incidence of intracranial pressure symptoms. Malignant tumors have been found in the literature with shorter pre-diagnostic symptomatic interval [26,41]. In the present study, the proportion of malignant tumors and high-grade astrocytomas was equal for the cases and controls, most likely not influencing our results. Further, the literature has revealed longer diagnostic intervals for brain tumors with a

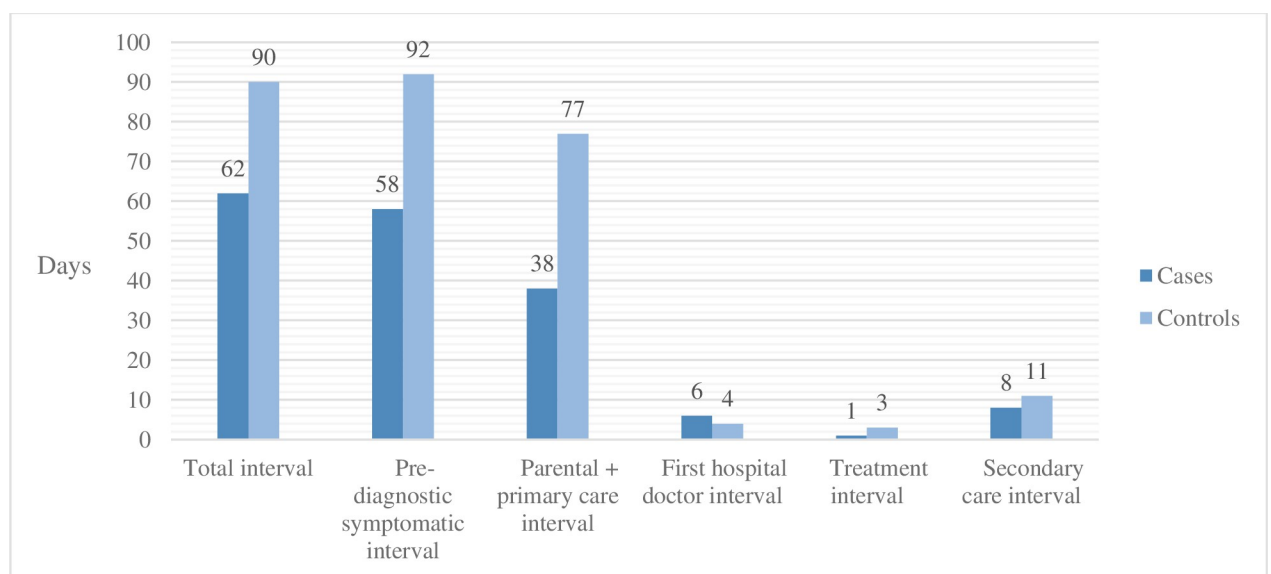


Fig 4. Illustration of time intervals. Bar chart illustrating six time intervals comparing the children with a brain tumor and a prior musculoskeletal diagnosis (cases) versus the children with a brain tumor without a prior musculoskeletal diagnosis (controls).

<https://doi.org/10.1371/journal.pone.0279549.g004>

Table 4. The prevalence of musculoskeletal diagnoses and the different time intervals comparing the children with a brain tumor and a musculoskeletal misdiagnosis to the rest of the group without a musculoskeletal misdiagnosis.

Diagnosis	MS misdiagnosis N = 11	Non-misdiagnosis N = 73	P
Total MS diagnosis	100% (11/11)	23% (17/73)	<0.001
Accidental MS lesion	64% (7/11)	6% (4/73)	<0.001
Arthropathy	0% (0/11)	3% (2/73)	0.58
Musculoskeletal pain	27% (3/11)	4% (3/73)	0.01
Other bone disorder	0% (0/11)	3% (2/73)	0.58
Other muscle/ tendon disorder	9% (1/11)	3% (2/73)	0.29
Reactive arthritis	0% (0/11)	1% (1/73)	0.70
Scoliosis	0% (0/11)	6% (4/73)	0.43
Total interval, days (IQR)	169 (57–582), n = 11	86 (32–397) n = 65	0.38
Parental and primary care interval	111 (21–283) n = 11	43 (15–222) n = 64	0.39
First hospital doctor interval	35 (6–166) n = 11	3 (1–48) n = 65	0.07
Specialist interval	0 (0–0) n = 11	0 (0–0) n = 65	0.40
Treatment interval	1 (1–9) n = 11	3 (0–7) n = 66	0.91
Secondary care interval	36 (7–217) n = 11	8 (2–76) n = 65	0.18
Pre-symptomatic diagnostic interval	168 (56–531) n = 11	75 (25–396) n = 63	0.27

MS: Musculoskeletal.

IQR: Interquartile range.

Six children with neurofibromatosis and one child with tuberous sclerosis were excluded from the analysis of time intervals. Due to lack of information in the chart review parental interval, primary care interval, and total diagnostic interval were left out in the table.

17/28 cases with a prior musculoskeletal diagnosis were not misdiagnosed. They no longer had musculoskeletal symptoms at time of brain cancer diagnosis and and their previous musculoskeletal diagnoses were presumed non-related to the cancer as it either disappeared spontaneously or responded to non-cancer treatment.

Therefore it was defined as non-misdiagnoses.

<https://doi.org/10.1371/journal.pone.0279549.t004>

supratentorial location [16,32,38,39]. In the present study, the tumor location did not differ between the cases and controls or for the subgroup with musculoskeletal misdiagnosis compared to those without, making it less likely to impact the results.

Despite medical advances, the diagnostic time intervals from symptom debut to diagnosis are still very long [16,18,27,28,30,32,35,37,38] and many brain tumors are undetected and misdiagnosed [18,19,28]. Many associations to extended diagnostic time intervals have been found (age, symptoms, and tumor grade, among others) [16,32,38] though most literature found no association between longer time intervals and decreased survival [42,43]. A musculoskeletal diagnosis prior to brain tumor diagnosis did not show significant association to influence survival in the present study, which is in accordance with the survival analysis performed in the registry-based study by Brix et al., including the total cohort of 931 children with brain tumors [20].

The number of contacts to medical care prior to the diagnosis of brain tumors has also been investigated, revealing a higher attendance in primary care one entire year preceding their cancer diagnosis when compared to children without cancer [44]. The reported number of attendances in primary and secondary care found in the literature was 4.6 (range 1–12) and 3 (0–12), respectively [29,32]. We have previously shown a median of 1 (range 1–7) hospital contacts with musculoskeletal diagnoses prior to the brain tumor diagnosis for the children with brain tumors and a prior musculoskeletal diagnosis [20].

According to the registry-based data of this study, musculoskeletal diagnosis occurred in 4% (33/931) of children with brain tumors [20], adjusted to 3% (28/931) after reviewing

medical records. Civino et al. evaluated 1277 children with cancer, in which 5% (5/101) of the children with CNS tumors had musculoskeletal symptoms, including four with arthropathy and one child with other musculoskeletal symptoms [21]. In the present study, we did not find arthropathy as a presenting manifestation in brain tumors.

This study has several limitations and must be interpreted with some caution. Recall bias may be a concern, especially regarding the time intervals and symptoms. One potential methodological limitation is the fact that the data does not include primary care and presumably underestimates the number of preliminary musculoskeletal diagnoses. Musculoskeletal pain is a common and non-specific symptom, affecting 10 to 20% of school-age children, and in primary care, musculoskeletal symptoms constitute 15% of all the contacts [45,46]. Furthermore, the estimated prevalence of registered musculoskeletal misdiagnoses of 1.2% (11/931) is presumably underestimated as a misdiagnosis. Though we tried to uncover this to the best of our ability by matching it with two gender- and age-matched controls without a registered musculoskeletal diagnosis per case. No musculoskeletal misdiagnoses occurred in the control group. Socioeconomic status was not investigated in this study and could possibly have impacted the time intervals, but since Denmark has free and equal access to medical care, this issue is considered of minor importance [47]. Another Danish study did not find socioeconomic status to influence the diagnostic delay looking at all childhood cancers [5].

Significant strengths of this study include the fact that the cases were identified from a non-selected cohort containing all consecutive cases of childhood brain tumors with a prior musculoskeletal diagnosis over 23 years with no loss to follow-up. The patients were identified through the national registries DCCR and DNPR, accompanied by detailed data from case records regarding the clinical presentation and time intervals. Furthermore, the design with randomly selected age- and gender-matched controls secured a comparison group to evaluate the clinical presentation, time intervals, and survival. Finally, the evaluation of diagnostic delay was strengthened by using a standardized model with several subintervals, which increases the generalizability of the results.

In conclusion, the present findings suggest that musculoskeletal misdiagnoses in childhood brain tumors are rare, and this study did not find a significant association to musculoskeletal misdiagnosis affecting the diagnostic delay. We highlight torticollis-related symptoms in childhood brain cancers, due to a significant risk of misdiagnosis.

Supporting information

S1 Checklist. STROBE statement—Checklist of items that should be included in reports of case-control studies.

(DOC)

S1 File.

(DTA)

Acknowledgments

We wish to thank Mette Nørgaard for the epidemiological help regarding the register data. We acknowledge Niels Henrik Bruun for statistical assistance. The authors further acknowledge Michael Thude Callesen for cooperation with data collection in the south region of Denmark.

Author Contributions

Conceptualization: Laura Hallundbæk, Ninna Brix.

Data curation: Laura Hallundbæk, Ninna Brix.

Formal analysis: Laura Hallundbæk, Ninna Brix.

Funding acquisition: Ninna Brix.

Investigation: Laura Hallundbæk, Ninna Brix.

Methodology: Laura Hallundbæk, Jesper Amstrup, Ninna Brix.

Project administration: Ninna Brix.

Supervision: Søren Hagstrøm, Rene Mathiasen, Troels Herlin, Henrik Hasle, Kathrine Synne Weile, Ninna Brix.

Writing – original draft: Laura Hallundbæk, Ninna Brix.

Writing – review & editing: Søren Hagstrøm, Rene Mathiasen, Troels Herlin, Henrik Hasle, Kathrine Synne Weile, Jesper Amstrup, Ninna Brix.

References

1. Kyu HH, Stein CE, Boschi Pinto C, Ravovac I, Weber MW, Dannemann Purnat T, et al. Causes of death among children aged 5–14 years in the WHO European Region: a systematic analysis for the Global Burden of Disease Study 2016. *Lancet Child Adolesc Heal*. 2018; 2(5):321–37.
2. Allen-Rhoades W, Whittle SB, Rainusso N. Pediatric solid tumors of infancy: An overview. *Pediatr Rev*. 2018; 39(2):57–67. <https://doi.org/10.1542/pir.2017-0057> PMID: 29437125
3. Helligsoe ASL, Kenborg L, Henriksen LT, Udupi A, Hasle H, Winther JF. Incidence and survival of childhood central nervous system tumors in Denmark, 1997–2019. *Cancer Med*. 2022; 11(1):245–56. <https://doi.org/10.1002/cam4.4429> PMID: 34800006
4. Gatta G, Peris-Bonet R, Visser O, Stiller C, Marcos-Gragera R, Sánchez MJ, et al. Geographical variability in survival of European children with central nervous system tumours. *Eur J Cancer*. 2017; 82:137–48. <https://doi.org/10.1016/j.ejca.2017.05.028> PMID: 28689091
5. Ahrensberg JM, Schrøder H, Hansen RP, Olesen F, Vedsted P. The initial cancer pathway for children—One-fourth wait more than 3 months. *Acta Paediatr Int J Paediatr*. 2012; 101(6):655–62. <https://doi.org/10.1111/j.1651-2227.2012.02625.x> PMID: 22313319
6. Dang-tan T, Franco EL. Diagnosis delays in childhood cancer: A review. *Am Cancer Soc*. 2007; 110(4):703–13. <https://doi.org/10.1002/cncr.22849> PMID: 17620277
7. Vasquez L, Oscanoa M, Tello M, Tapia E, Maza I, Geronimo J. Factors associated with the latency to diagnosis of childhood cancer in Peru. *Pediatr Blood Cancer*. 2016; 63(11):1959–65. <https://doi.org/10.1002/psc.26134> PMID: 27394036
8. Veneroni L, Mariani L, Vullo S Lo, Favini F, Catania S, Pava MV de, et al. Symptom Interval in Pediatric Patients With Solid Tumors: Adolescents Are at Greater Risk of Late Diagnosis. *Pediatr Blood Cancer*. 2013; 60:605–10. <https://doi.org/10.1002/psc.24312> PMID: 23034970
9. Rask O, Nilsson F, Lähteenmäki P, Ehrstedt C, Holm S, Sandström PE, et al. Prospective registration of symptoms and times to diagnosis in children and adolescents with central nervous system tumors: A study of the Swedish Childhood Cancer Registry. *Pediatr Blood Cancer*. 2022; 69(11):1–9. <https://doi.org/10.1002/psc.29850> PMID: 35727740
10. Glauser TA, Packer RJ. Cognitive deficits in long-term survivors of childhood brain tumors. *Child's Nerv Syst*. 1991; 7(1):2–12. <https://doi.org/10.1007/BF00263824> PMID: 2054802
11. Strodbeck K, Sloan A, Rogers L, Fisher PG, Stearns D, Campbell L, et al. Risk of subsequent cancer following a primary CNS tumor. *J Neurooncol*. 2013; 112(2):285–95. <https://doi.org/10.1007/s11060-013-1063-0> PMID: 23392847
12. de Fine Licht S, Rugbjerg K, Gudmundsdottir T, Bonnesen TG, Asdahl PH, Holmqvist AS, et al. Long-term inpatient disease burden in the Adult Life after Childhood Cancer in Scandinavia (ALiCCS) study: A cohort study of 21,297 childhood cancer survivors. *PLoS Med*. 2017; 14(5).
13. Ellenberg L, Liu Q, Gioia G, Yasui Y, Packer RJ, Mertens A, et al. Malignancies: A Report from the Childhood Cancer Survivor. *Neuropsychology*. 2010; 23(6):705–17.
14. Geenen MM, Cardous-Ubbink MC, Kremer LCM, Van Den Bos C, Van Der Pal HJH, Heinen RC, et al. Medical assessment of adverse health outcomes in long-term survivors of childhood cancer. *J Am Med Assoc*. 2007; 297(24):2705–15. <https://doi.org/10.1001/jama.297.24.2705> PMID: 17595271

15. Wilne S, Collier J, Kennedy C, Koller K, Grundy R, Walker D. Presentation of childhood CNS tumours: a systematic review and meta-analysis. *Lancet Oncol*. 2007; 8(8):685–95. [https://doi.org/10.1016/S1470-2045\(07\)70207-3](https://doi.org/10.1016/S1470-2045(07)70207-3) PMID: 17644483
16. Reulecke BC, Erker CG, Fiedler BJ, Niederstadt TU, Kurlmann G. Brain tumors in children: Initial symptoms and their influence on the time span between symptom onset and diagnosis. *J Child Neurol*. 2008; 23(2):178–83. <https://doi.org/10.1177/0883073807308692> PMID: 18160552
17. Loh JK, Lin CK, Hwang YF, Hwang SL, Kwan AL, Howng SL. Primary spinal tumors in children. *J Clin Neurosci*. 2005; 12(3):246–8. <https://doi.org/10.1016/j.jocn.2004.03.032> PMID: 15851074
18. Brasme JF, Chalumeau M, Doz F, Lacour B, Valteau-Couanet D, Gaillard S, et al. Interval between onset of symptoms and diagnosis of medulloblastoma in children: Distribution and determinants in a population-based study. *Eur J Pediatr*. 2012; 171(1):25–32. <https://doi.org/10.1007/s00431-011-1480-z> PMID: 21537925
19. Chen J, Mullen CA. Patterns of Diagnosis and Misdiagnosis in Pediatric Cancer and Relationship to Survival. *J Pediatr Hematol Oncol*. 2017; 39(3):e110–5. <https://doi.org/10.1097/MPH.0000000000000688> PMID: 27782927
20. Brix N, Amstrup J, Nørgaard M, Hagstrøm S, Hasle H, Herlin T. Musculoskeletal Diagnoses Prior to Cancer in Children: A Danish Registry-Based Cohort Study. *J Pediatr*. 2021 Mar; 242:32–38.e2.
21. Civino A, Alighieri G, Prete E, Caroleo AM, Magni-Manzoni S, Vinti L, et al. Musculoskeletal manifestations of childhood cancer and differential diagnosis with juvenile idiopathic arthritis (ONCOREUM): a multicentre, cross-sectional study. *Lancet Rheumatol*. 2021; 3(7):e507–16.
22. Gonçalves M, Terreri MTRA, Barbosa CMPL, Len CA, Lee L, Hilário MOE, et al. Diagnosis of malignancies in children with musculoskeletal complaints. *Sao Paulo Med J*. 2005 Jan; 123(1):21–3. <https://doi.org/10.1590/s1516-31802005000100005> PMID: 15821811
23. Russo G, Orlando F, Forni C, Battagliese A, Alessio M. Diagnosis of malignancies in children with musculoskeletal complaints. *Ann Rheum Dis*. 2013;71.
24. Cabral DA, Tucker LB. Malignancies in children who initially present with rheumatic complaints. *J Pediatr*. 1999 Jan; 134(1):53–7. [https://doi.org/10.1016/s0022-3476\(99\)70372-0](https://doi.org/10.1016/s0022-3476(99)70372-0) PMID: 9880449
25. Weller D, Vedsted P, Rubin G, Walter FM, Emery J, Scott S, et al. The Aarhus statement: Improving design and reporting of studies on early cancer diagnosis. *Br J Cancer*. 2012; 106(7):1262–7. <https://doi.org/10.1038/bjc.2012.68> PMID: 22415239
26. Dobrovolic M, Hengartner H, Boltshauser E, Grotzer MA. Delay in the diagnosis of paediatric brain tumours. *Eur J Pediatr*. 2002; 161(12):663–7. <https://doi.org/10.1007/s00431-002-1088-4> PMID: 12447667
27. Patel V, McNinch NL, Rush S. Diagnostic delay and morbidity of central nervous system tumors in children and young adults: a pediatric hospital experience. *J Neurooncol*. 2019; 143(2):297–304. <https://doi.org/10.1007/s11060-019-03160-9> PMID: 30929127
28. Shay V, Fattal-Valevski A, Beni-Adani L, Constantini S. Diagnostic delay of pediatric brain tumors in Israel: A retrospective risk factor analysis. *Child's Nerv Syst*. 2012; 28(1):93–100.
29. Edgeworth J, Bullock P, Bailey A, Gallagher A, Crouchman M. Why are brain tumours still being missed? *Arch Dis Child*. 1996; 74:148–51. <https://doi.org/10.1136/adc.74.2.148> PMID: 8660079
30. Maaz AUR, Yousif T, Saleh A, Pople I, Al-Kharazi K, Al-Rayahi J, et al. Presenting symptoms and time to diagnosis for Pediatric Central Nervous System Tumors in Qatar: a report from Pediatric Neuro-Oncology Service in Qatar. *Child's Nerv Syst*. 2021; 37(2):465–74. <https://doi.org/10.1007/s00381-020-04815-z> PMID: 32710251
31. Dörner L, Fritsch MJ, Stark AM, Mehdorn HM. Posterior fossa tumors in children: How long does it take to establish the diagnosis? *Child's Nerv Syst*. 2007; 23(8):887–90. <https://doi.org/10.1007/s00381-007-0323-8> PMID: 17429658
32. Wilne S, Collier J, Kennedy C, Jenkins A, Grout J, MacKie S, et al. Progression from first symptom to diagnosis in childhood brain tumours. *Eur J Pediatr*. 2012; 171(1):87–93. <https://doi.org/10.1007/s00431-011-1485-7> PMID: 21594769
33. Tumturk A, Kaya Ozcora G, Kacar Bayram A, Kabaklioglu M, Doganay S, Canpolat M, et al. Torticollis in children: an alert symptom not to be turned away. *Child's Nerv Syst*. 2015; 31(9):1461–70.
34. Haque S, Shafi BBB, Kaleem M. Imaging of torticollis in children. *Radiographics*. 2012; 32(2):557–71. <https://doi.org/10.1148/rg.322105143> PMID: 22411949
35. Hirata K, Muroi A, Tsurubuchi T, Fukushima H, Suzuki R, Yamaki Y, et al. Time to diagnosis and clinical characteristics in pediatric brain tumor patients. *Child's Nerv Syst*. 2020; 36(9):2047–54. <https://doi.org/10.1007/s00381-020-04573-y> PMID: 32157367

36. Hayashi N, Kidokoro H, Miyajima Y, Fukazawa T, Natsume J, Kubota T, et al. How do the clinical features of brain tumours in childhood progress before diagnosis? *Brain Dev.* 2010; 32(8):636–41. <https://doi.org/10.1016/j.braindev.2009.10.001> PMID: 19892502
37. Stocco C, Pilotto C, Passone E, Nocerino A, Tosolini R, Pusiol A, et al. Presentation and symptom interval in children with central nervous system tumors. A single-center experience. *Child's Nerv Syst.* 2017; 33(12):2109–16. <https://doi.org/10.1007/s00381-017-3572-1> PMID: 28808765
38. Azizi AA, Heßler K, Leiss U, Grylli C, Chocholous M, Peyrl A, et al. From Symptom to Diagnosis—The Prediagnostic Symptomatic Interval of Pediatric Central Nervous System Tumors in Austria. *Pediatr Neurol.* 2017; 76:27–36. <https://doi.org/10.1016/j.pediatrneurol.2017.08.006> PMID: 28935367
39. Boutahar FZ, Benmiloud S, El Kababri M, Kili A, El Khorassani M, Allali N, et al. Time to diagnosis of pediatric brain tumors: a report from the Pediatric Hematology and Oncology Center in Rabat, Morocco. *Child's Nerv Syst.* 2018; 34(12):2431–40. <https://doi.org/10.1007/s00381-018-3927-2> PMID: 30054805
40. Gilli IO, Joaquim AF, Tedeschi H, dos Santos Aguiar S, Morcillo AM, Ghizoni E. Factors affecting diagnosis of primary pediatric central nervous system neoplasias in a developing country. *Child's Nerv Syst.* 2019; 35(1):91–6. <https://doi.org/10.1007/s00381-018-3958-8> PMID: 30250987
41. Arnautovic A, Billups C, Broniscer A, Gajjar A, Boop F, Qaddoumi I. Delayed diagnosis of childhood low-grade glioma: causes, consequences and potential solutions. *Childs Nerv Syst.* 2015; 31(7):1067–77. <https://doi.org/10.1007/s00381-015-2670-1> PMID: 25742877
42. Kukul K, Dobrovoljac M, Boltshauser E, Ammann RA, Grotzer MA. Does diagnostic delay result in decreased survival in paediatric brain tumours? *Eur J Pediatr.* 2009; 168(3):303–10. <https://doi.org/10.1007/s00431-008-0755-5> PMID: 18536935
43. Brasme JF, Grill J, Doz F, Lacour B, Valteau-Couanet D, Gaillard S, et al. Long time to diagnosis of medulloblastoma in children is not associated with decreased survival or with worse neurological outcome. *PLoS One.* 2012; 7(4).
44. Ahrensberg JM, Fenger-Grøn M, Vedsted P. Use of Primary Care during the Year before Childhood Cancer Diagnosis: A Nationwide Population-Based Matched Comparative Study. *PLoS One.* 2013; 8(3):1–8. <https://doi.org/10.1371/journal.pone.0059098> PMID: 23554980
45. Goodman J, McGrath P. The epidemiology of pain in children and adolescents: a review. *Pain.* 1991; 46(3):247–64. [https://doi.org/10.1016/0304-3959\(91\)90108-A](https://doi.org/10.1016/0304-3959(91)90108-A) PMID: 1758709
46. Vedsted P, Olesen F, Hollnagel H, Bro F, Kamper-Jørgensen F. Almen Laegepraksis i Danmark. *Tidsskr Prakt Laegegerning.* 2005; 140.
47. Ministry of Health Healthcare Denmark. Healthcare in Denmark [Internet]. Colophon. 2017. Available from: sum.dk.