



Aalborg Universitet

AALBORG UNIVERSITY
DENMARK

Genetic risk factors of inflammatory bowel disease

with special emphasis on CARD15 and the biotransformation enzymes: GSTM1, GSTT1, GSTP1, NAT2 and mEH

Ernst, Anja

Publication date:
2011

Document Version
Accepted author manuscript, peer reviewed version

[Link to publication from Aalborg University](#)

Citation for published version (APA):

Ernst, A. (2011). *Genetic risk factors of inflammatory bowel disease: with special emphasis on CARD15 and the biotransformation enzymes: GSTM1, GSTT1, GSTP1, NAT2 and mEH*. Center for Sensory-Motor Interaction (SMI), Department of Health Science and Technology, Aalborg University.

General rights

Copyright and moral rights for the publications made accessible in the public portal are retained by the authors and/or other copyright owners and it is a condition of accessing publications that users recognise and abide by the legal requirements associated with these rights.

- Users may download and print one copy of any publication from the public portal for the purpose of private study or research.
- You may not further distribute the material or use it for any profit-making activity or commercial gain
- You may freely distribute the URL identifying the publication in the public portal -

Take down policy

If you believe that this document breaches copyright please contact us at vbn@aub.aau.dk providing details, and we will remove access to the work immediately and investigate your claim.

GENETIC RISK FACTORS OF INFLAMMATORY BOWEL DISEASE

WITH SPECIAL EMPHASIS ON CARD15 AND THE BIOTRANSFORMATION ENZYMES:

GSTM1, GSTT1, GSTP1, NAT2 AND mEH

Anja Ernst

Department of Clinical Biochemistry, Section of Molecular Diagnostics, Aalborg Hospital, Aarhus University Hospital, Department of Gastroenterology, Aalborg Hospital, Aarhus University Hospital & Center for Sensory-Motor Interactions (SMI), Department of Health Science and Technology, Aalborg University

ISBN 978-87-7094-089-4

ACKNOWLEDGEMENTS.....	6
ABBREVIATIONS	7
INTRODUCTION.....	8
Inflammatory bowel diseases.....	8
Incidence and prevalence.....	8
Symptoms and diagnosis	8
Treatment and prognosis	9
Genes in complex diseases	9
Common variants vs. rare variants in common diseases	10
Genes in inflammatory bowel diseases.....	10
Disease associated genes	11
CARD15.....	11
Gene environment interactions.....	14
The xenobiotica metabolising enzyme system.....	14
Glutathione S-transferases.....	15
microsomal Epoxide Hydrolase.....	16
N-acetyl transferase 2.....	17
P-glycoprotein and Breast Cancer Resistance Protein.....	17
Hypothesis	17
Aims	18
METHODS.....	20
Study design.....	20
Strength and limitations of the study	20
Genotyping assays.....	21
PCR gel based assays.....	21
Real-time PCR based assays	21
Allelic discrimination assay.....	21
Relative quantification assay	23
Genotyping assays used in the thesis.....	23
Genotyping of CARD15	23
Genotyping of GSTT1	24
Genotyping of GSTM1	24
Genotyping of GSTP1.....	25
Genotyping of mEH.....	25
Genotyping of NAT2	25
Genotyping of MDR1 and BCRP	26

RESULTS - RISK FACTORS OF IBD	28
Smoking	28
CARD15	28
Xenobiotica metabolising enzymes.....	30
Glutathione S-transferase family.....	30
N-acetyltransferase 2.....	32
microsomal Epoxide Hydrolase.....	33
Xenobiotic transporters MDR1 and BCRP	33
CONCLUSION AND PERSPECTIVES	35
Perspectives	35
SUMMARY IN DANISH.....	37
REFERENCES	39
PAPERS I-III	58

The present thesis is partly based on three studies, which are referred to in the text by Roman numerals I-III. The studies have been carried out in the period from 2005-2010 at the Department of Clinical Biochemistry, Section of Molecular Diagnostics, Aalborg Hospital, and Mech-Sense, Department of Gastroenterology, Aalborg Hospital in collaboration with Centre for Sensory-Motor Interactions (SMI), Aalborg University.

- I: Ernst A, Jacobsen B, Østergaard M, Okkels H, Andersen V, Dagiliene E, Pedersen IS, Thorsgaard N, Drewes AM, Krarup HB. Mutations in CARD15 and smoking confer susceptibility to Crohn's disease in the Danish population. *Scand J Gastroenterol*. 2007 Dec;42(12):1445-51. (doi:10.1080/00365520701427102)
- II: Ernst A, Andersen V, Østergaard M, Jacobsen BA, Dagiliene E, Pedersen IS, Drewes AM, Okkels H, Krarup HB. Genetic variants of glutathione S-transferases mu, theta, and pi display no susceptibility to inflammatory bowel disease in the Danish population. *Scand J Gastroenterol*. 2010 Sep;45(9):1068-75. (doi:10.3109/00365521.2010.490594)
- III: Ernst A, Andersen V, Østergaard M, Jacobsen BA, Pedersen IS, Drewes AM, Okkels H, Krarup HB. Common polymorphisms in the microsomal epoxide hydrolase and N-acetyltransferase 2 genes in association with inflammatory bowel disease in the Danish population. *Eur J Gastroenterol Hepatol*. 2011;23:269-74. (doi: 10.1097/MEG.0b013e3283438a44)

ACKNOWLEDGEMENTS

I would like to thank my supervisors, PhD, MD Henrik Krarup for making research possible and for his never failing encouraging and optimistic support, PhD, MSc Henrik Okkels for introducing me to the subject of biotransformation and for constructive discussion of manuscripts, and Professor, PhD, DMSc Asbjørn Mohr Drewes for tremendous help with scientific writing and for adding perspective to the process of writing a PhD thesis.

I want to express my gratitude to our collaboration partners from Viborg, PhD, MSc Mette Østergaard for great collaboration in structuring our cohort data and for constructive writings of manuscripts, and PhD, MD Vibeke Andersen for great cooperation with our joined projects, and for expanding our projects into new areas of research with new collaboration partners.

I would like to thank our collaboration partners at the Department of Gastroenterology Aalborg Hospital, Aarhus University Hospital MD Bent A. Jacobsen for access to the patient database, and for help with sub-grouping the patients according to disease phenotype, and MD Enrika Dagiliene for collecting samples from the participating patients. I want to thank all my co-authors who contributed to the manuscripts and PhD, MSc Claus Dethlefsen for competent assistance with the logistic regression analyses.

I am very grateful towards my colleagues, PhD MSc Tina Vasehus Madsen for the comments on this thesis and for her encouraging behaviour during the writing of this thesis, and PhD, MSc Inge Søkilde Pedersen for assistance with realtime PCR methods and for help and support of whatsoever at all times. I would also like to thank my colleagues at the Section of Molecular Diagnostics for making our lab a wonderful workplace which I am very fortunate to be a part of. A special thanks goes to the administration at the Department of Clinical Biochemistry for giving me the opportunity to perform research.

A special thanks goes to the participants for their willingness to participate in this study. I also want to express my gratitude to the fundings received from Aalborg Hospital, The County of Northern Jutland, the Research Initiative at Aarhus University Hospital, the Augustinus Foundation, the Obel Family Foundation, the Danish Crohn and Colitis Foundation, and the Peder Kristian Toefting and Dagmar Toefting Foundation.

Finally, I would like to thank my family, my parents Helmut and Maibritt Ernst, and my husband Michael Bai Ernst for always believing in me and for supporting me at all times. A special thanks to my children My and Sejr; you give me perspective as to what is important in life.

Anja Ernst, March 2011

ABBREVIATIONS

BCRP: Breast cancer resistance protein

CARD: CAspase Recruitment Domain

CARD15: CAspase Recruitment Domain 15

CD: Crohn's Disease

GST: Glutathione S-transferase

GSTM1: Glutathione S-transferase μ

GSTM1*0: Glutathione S-transferase μ null genotype

GSTP1: Glutathione S-transferase π

GSTP1 105 low: Glutathione S-transferase π 105 low activity genotype

GSTP1 114 low: Glutathione S-transferase π 114 low activity genotype

GSTT1: Glutathione S-transferase θ

GSTT1*0: Glutathione S-transferase θ null genotype

GWA: Genome Wide Association

IBD: Inflammatory Bowel Disease

MDR1/ABCG1: MultiDrug Resistance p-glycoprotein

mEH: microsomal Epoxide Hydrolase

MLPA: Multiplex Ligation dependent Probe Amplification

NAT2: N-acetyltransferase 2

NFkB: Nuclear Factor kappa Beta

NLRs: Nucleotide oligomerisation Like Receptors

OR: Odds Ratio

PCR: Polymerase Chain Reaction

SNP: Single Nucleotide Polymorphism

TLRs: Toll-Like Receptors

UC: Ulcerative Colitis

INTRODUCTION

Crohn's disease (CD) and ulcerative colitis (UC) are two related diseases that belong to a larger group of illnesses called chronic inflammatory bowel diseases (IBD). Studies indicate that the inflammation in IBD involves a complex interaction of several factors, among these inherited genetic susceptibility, the immune system, and environmental factors. However, relatively little is known about genetic risk factors and the interaction between genetic and environmental factors.

Inflammatory bowel diseases

IBD is mainly used to describe CD and UC but other forms such as indeterminate colitis also exist. CD and UC are characterised by an abnormal immune response. CD and UC differ by both the localisation of and the nature of the disease¹. CD usually involves the colon and ileum, but may involve any part of the gastrointestinal tract. All layers of the intestine may be involved, and there can be normal healthy bowel in between patches of diseased gut. In UC the gastrointestinal involvement is limited to the colon and the rectum. The rectum is nearly always involved and the lesion extends proximally in a continuous pattern¹.

Incidence and prevalence

The prevalence and incidence of IBD have historically been higher in developed countries^{2;3}. The incidence of CD and UC has recently been investigated in different geographical regions of Denmark. For women the incidence of CD was approximately 10 pr 100.000 and for men 8 pr 100.000 in the two regions^{4;5}. The incidence of UC was in the range of 13-17 pr 100.000 for both men and women in the two distinct regions of Denmark^{4;5}. The prevalence of CD and UC was 151 and 294 pr 100.000 inhabitants in Northern Jutland on the 31st of December 2002, which gave an estimate of 25000 Danish IBD patients⁵.

Symptoms and diagnosis

A diagnosis of IBD is usually made in young adults. Two recent Danish studies revealed that the majority of IBD diagnoses is made in the period between the late teenage years and into the thirties^{4;5}. The diagnosis of CD or UC is established by finding characteristic intestinal ulcerations and excluding alternative diagnoses, such as enteric infections. CD patients typically present with diarrhoea, abdominal pain, fever and weight loss. UC patients typically present with rectal bleeding, diarrhoea, and abdominal pain. Active disease in UC is characterized by the endoscopic appearance of superficial ulcerations and bloody stools are common. The diagnosis

of IBD can be made only when other reasonable alternatives in the differential diagnosis have been excluded^{6,7}.

Treatment and prognosis

IBD is a chronic disease, but the activity will fluctuate between disease flare-up and times of remission. The quality of the social life of a patient may be tremendously affected. Symptoms may range from mild to severe, and therapy is dependent on both severity of disease, location of disease, and disease associated complications. The medical therapy includes anti-inflammatory and immunosuppressive drugs and biological drugs^{6,7}. The response to medical treatment and tolerance of the medicaments vary greatly between individuals. The main goal of disease treatment is to induce remission of disease, and for the patient to remain in remission. Colorectal cancer risk is an important concern for patients with UC or CD⁸. In general, the longer a person has had IBD, the greater is the risk of developing colorectal cancer. Surveillance using colonoscopy is used to detect early dysplasia in IBD patients.

Genes in complex diseases

Where monogenic diseases have recognisable inheritance patterns for recessive, autosomal dominant and gender-linked diseases which allows for exact calculation of risk of disease, the inheritance pattern of complex diseases are less evident. Complex diseases are associated with the effects of multiple genes and also in combination with environmental factors such as lifestyle factors.

Genetic risk factors of complex diseases are usually found by association studies. Hypothesis generated studies have been used for decades to investigate whether candidate genes are associated with disease. The completion of the Human Genome Project revealed the human genetic profile to consist of more than 3 billion base pairs. An estimate of between 20,000-25,000 genes was found which means that only a small percentage (1.0-1.4%) of the genome sequence encodes proteins⁹. The genomes of human individuals are more than 99% identical, leaving approximately 1% of the human genome responsible for both normal genetic variation and genetic predisposition of diseases. The International HapMap Project, a project investigating the genetic variation between populations of different ethnic origin, was conducted in parallel with the Human Genome Project⁹. The information from these studies is used in search of genetic predisposition of diseases. The HapMap Project has made an estimate that more than 10 million Single Nucleotide Polymorphisms (SNPs) are present in the genome¹⁰. Many of the polymorphisms are common functional polymorphisms influencing the phenotype of the individual. Hence, the polymorphisms are responsible for variations in the population.

Common variants vs. rare variants in common diseases

According to the common disease - common variant hypothesis, the risk of contracting common diseases is influenced by genetic polymorphisms that are relatively common in the population^{11;12}. Genome Wide Association (GWA) studies has made the search for susceptibility genes without any prior assumptions of the genes possible. GWA studies use a large number of well-spaced SNPs to provide almost complete coverage of the human genome. The function of the disease associated variant is often unknown. The causative gene variant may then be found by scanning nearby genes that could possibly be related to the disease of interest. There is also the possibility that the common variants may act as modifiers of the effect of other rare variants^{11;12}. However, some precautions may be taken. When using the GWA approach very large study populations are needed because the variants in general contribute with only a modest disease risk. The significance levels must take into account the large number of multiple testing to avoid large number of false positives. Replication studies are needed to eliminate false positives found in preliminary studies.

The common disease – rare variant hypothesis argues that rare relatively high penetrant genetic variants contribute to common diseases¹³. For rare variants the functional effect lies within the rare variant. The rare variants are often population specific due to the founder effect, and replication studies of rare variant associations are difficult because of the rarity of the variant. Rare variants are found by sequencing regions in functionally relevant genes. Hence, selection of genes to investigate is extremely essential when searching for rare disease causing variants.

GWA studies uncovering common variants vs. trying to identify rare disease associated variants are two different ways to identify genetic susceptibility of disease. Pros and cons have been made concerning both approaches and the discussion will probably continue in upcoming years^{12;13}.

Genes in inflammatory bowel diseases

A positive family history of IBD is the greatest independent risk factor of developing disease. Twin studies have shown a higher concordance rate among monozygotic than among dizygotic twin pairs proving a genetic influence on occurrence of IBD. The monozygotic disease concordance was approximately 50% for CD and 18% for UC¹⁴⁻¹⁸. Thus, the genetic contribution to disease seems to be more pronounced with regard to CD than to UC.

Disease associated genes

As IBD is characterized by altered epithelial barrier function and defects in the immune response, genes involved in the immune response, especially the innate immune response, are likely candidates as risk factors of IBD. Genes that directly or indirectly affect the epithelial barrier are also possibly candidates when searching for genetic risk factors of IBD.

Huge progress has been made in unraveling the genetic background of IBD. The recent year's GWA studies have made an immense contribution to the number of known genetic risk factors of IBD, but the contribution to disease risk is in general low. More than 100 loci are now known for both UC and CD, where some of them are shared¹⁹⁻²¹. Many of the identified susceptibility genes cluster into known cellular processes of immunity and autophagy²²⁻²⁴. It is intriguingly exciting when more than one gene in a pathway is associated with disease susceptibility. Several genes involved in the differentiation of the T helper cells Th17 have shown to be associated with IBD. Genes such as IL12B, JAK2, STAT3, CCR6 and IL23R^{20;22;25;26}. Most of these are shared for CD and UC, but CCR6 are specific to CD²³.

Specific genetic variants in ATG16L1 and IRGM involved in autophagy have shown disease susceptibility to CD^{22;27;28}. A possible interaction between ATG16L1 and the first identified CD susceptibility gene CARD15 strengthen the importance of autophagy related genes in CD²⁹⁻³¹. Genes involved in epithelial barrier function such as ECM1, LAMB1 have shown susceptibility specific to UC and not to CD^{22;23;26}.

A tremendous job is still ahead unraveling the causal genes and genetic variants within susceptibility loci identified by GWA studies.

CARD15

The innate immune system serves to immediately recognize pathogen associated molecular patterns and control infection by inducing pro-inflammatory cytokines and chemokines that recruit inflammatory cells³². Pattern recognition receptors are proteins expressed by epithelial cells and cells of the innate immune system. Pattern recognition receptors have a key role in maintaining the integrity of the epithelial barrier^{33;34}. Two distinct systems of pattern recognition receptors have been investigated in susceptibility to IBD; the membrane bound Toll-Like Receptors (TLRs) and the cytoplasmic Nucleotide-binding oligomerisation domain Like Receptors (NLRs)³⁵. The receptors initiate immunity by recognizing different molecular patterns such as bacteria cell wall components³⁴.

The TLRs are important initiators of immunity by recognizing different pathogen associated molecular patterns shared by bacteria³⁶. The action of TLRs upon recognition of microbial patterns is an initiation of a signaling cascade that triggers immunity by a pro-inflammatory

pathway³⁷. Several TLRs, TLR2, TLR4, TLR5 and TLR9, have been associated with IBD^{32;36;38}. TLR4 is the most intensively investigated TLR with respect to IBD and a large meta-analysis have reported two polymorphisms in the gene to cause susceptibility to both UC and IBD in Caucasians³⁶. The data suggest that TLRs are crucial for initiation and progression of IBD, but mutations in a single TLR gene are insufficient to explain the complex pathogenesis of IBD.

The NLRs are like the TLRs important in regulation of pro-inflammatory pathways in response to bacteria by inducing signaling pathways initiating an immune response³⁹⁻⁴¹. The NLRs consist of three domains; a C-terminal leucine rich repeat, a central domain and a variable N-terminal domain which is responsible for the diversity of the NLRs⁴².

A caspase recruitment domain (CARD) is the N-terminal domain in the NLRs nod1 and nod2. These receptors are alternatively named CARD4 and CARD15 due to changes in the nomenclature. CARD15 was the first IBD susceptibility gene identified, and it has been found only to be a risk factor of CD^{43;44}. Few variations have been reported in African and Asian populations, but at least 30 variations may be seen in Caucasians^{45;46}. The majority of variations are specific for each individual but three variations occur more frequently and may in some populations be considered rather as polymorphisms and not mutations. The three common variants are two SNPs and one frame-shift mutation which account for up to 82% of all CARD15 mutations found⁴⁶. The three variations are located within the C-terminal region of the protein responsible for ligand recognition⁴². Recognition of bacterial components by CARD15 proteins activate the Nuclear Factor kappa Beta (NFkB) pathway which initiates transcription of proinflammatory cytokines and antimicrobial peptides such as defensins^{35;40;47}. This is illustrated in figure 1 on the following page.

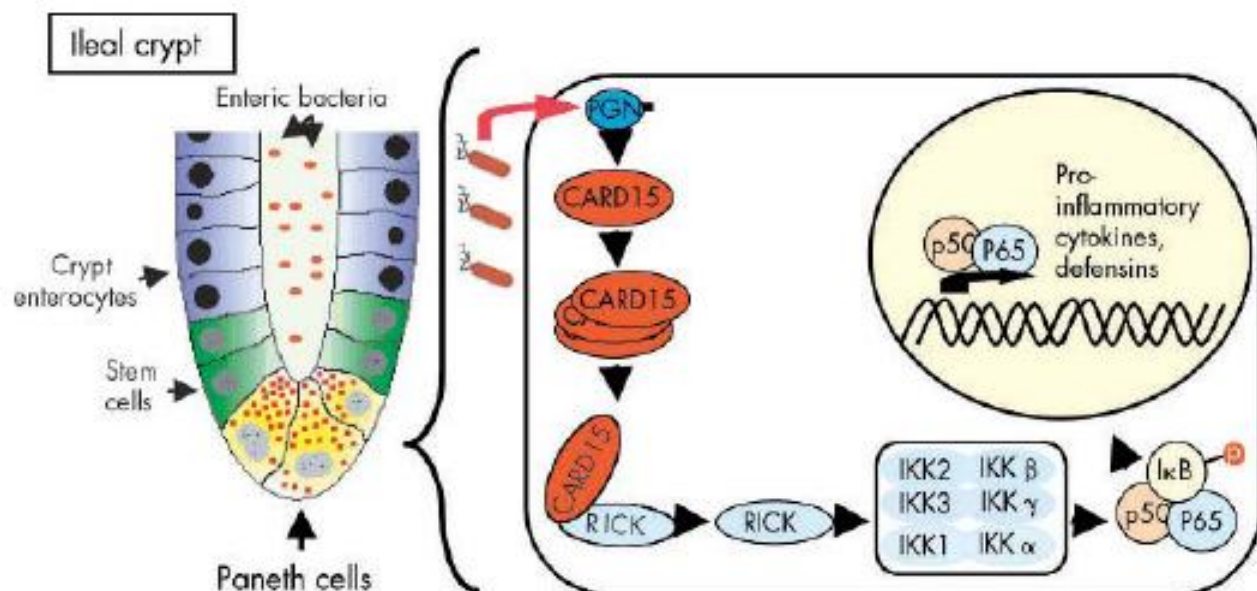


Figure 1. Action of CARD15

CARD15 is activated by binding of degradation products of peptidoglycans (PGNs) derived from bacterial cells walls. Their presence triggers CARD15 oligomerisation and recruitment of RIP-like interacting CLARP kinase (RICK) via CARD-CARD interaction. RICK then activates the nuclear factor kB inhibitor (IκB) kinase complex (IKK) via phosphorylation of IKKc. The IKK complex next phosphorylates IκB resulting in nuclear factor kB (NFκB) translocation to the nucleus and transcriptional activation of NFκB responsive genes such as proinflammatory cytokines or defensins. Modified from Gasche et al⁴⁷.

The exact mechanism of how CARD15 variations contribute to CD is not fully understood. It has been debated whether the contribution to CD pathogenesis happens either through a loss of function or a gain of function mechanism. The loss of function explanation relies on a diminished response upon recognition of microbial patterns leading to a less effective recruitment and function of innate cells. Based on this hypothesis otherwise harmless commensal bacteria will increasingly translocate into the intestinal mucosa leading to an activation of the adaptive immune system and ultimately a chronic inflammation³⁴. The gain of function explanation states initiation of a hyper-response upon recognition of microbial patterns leading to an excessive innate immune response, despite of normal levels of microbial patterns present^{34,48}.

Prevalence of the three CARD15 variants have shown great ethnic differences, indicating that genetic susceptibility differ between populations of different ethnic origin^{49,50}. Heterogeneity exist even between the European countries, i.e. CARD15 variants are less frequent in Northern

Europe^{49;51}. Regional diversity of CARD15 variants in Europe indicates the existence of selection pressure within a region. Natural selection within a certain geographical region along with genetic drift can ultimately lead to elimination, or in this particular case fixation, of a specific variant⁵².

Gene environment interactions

More than genetic susceptibility is responsible for developing IBD. The environmental contribution to IBD is evident by the fact that incidence and prevalence of IBD are increasing in areas which have historically been low incident areas²⁰. Environmental factors play a crucial role in disease pathogenesis and the interaction between susceptibility genes and different environmental factors has been shown to influence the risk of developing IBD^{53;54}.

All sorts of environmental factors such as breastfeeding, childhood infections, use of oral contraceptives, appendectomy, smoking and hygiene have been investigated in search for association with IBD^{53;55-57}. Most research has resulted in contradictory results. Appendectomy has shown some protective effect against UC⁵³, but the most intensively investigated factor is tobacco smoking. Smoking has consistently proven to be a risk factor for CD, while on the contrary current smoking has shown to be a protective factor against UC^{53;55;58;59}. Differences in associated genes between smoking and non-smoking CD patients point towards complex gene environment interactions^{53;54;60}.

The xenobiotica metabolising enzyme system

The human body is exposed to a wide array of xenobiotics; from environmental components and pharmaceuticals to endogenously produced reactive substances. The body comprises a complicated enzymatic biotransformation system which detoxifies these substances^{61;62}. The majority of the detoxification reactions take place in the liver but a great amount of detoxification occurs in the gastrointestinal tract as well⁶³. The enzymes are highly polymorphic displaying wide phenotypic variation. Impaired ability to remove reactive substances from the body may play a role in the aetiology of chronic conditions i.e. autoimmune diseases by gene environment interactions⁶¹.

The intestinal epithelial barrier constitutes the largest and most important barrier against the external environment. The crucial function of the epithelial barrier is to allow absorption of nutrients and water, while maintaining an effective defence against luminal toxins and antigens. The permeability of the epithelial barrier is regulated by multiple factors such as cytokines, immune cells, apoptosis and exogenous factors such as xenobiotics^{61;64;65}. Increased intestinal permeability have been shown not only in IBD patients, but also in healthy first degree

relatives⁶⁶⁻⁶⁸. Xenobiotics metabolising enzymes and cellular efflux transporters are critical components in maintaining intestinal barrier integrity by removing or detoxifying reactive metabolites of xenobiotics which make these enzymes candidates as risk factors⁶⁹.

The consequence of biotransformation is in most cases detoxification; however, metabolism of some xenobiotics generates metabolites that are more reactive than their substrate compound. The biotransformation system involves several enzyme systems that are commonly divided into two phases; phase I and phase II. The phase I enzymes are responsible for oxidation, reduction or hydrolysis and can be either detoxifying or activating⁶³. The phase II enzymes exert primarily detoxifying potential by conjugation⁶¹. The export of xenobiotics and conjugates out of the cell may be considered phase III biotransformation⁶¹. The efflux transporters (phase III) mediates the transport of xenobiotics and conjugated compounds back into the gut lumen or into the lymph for transport back to the liver^{70;71}. The transporters play a pivotal role in drug resistance but are also involved in protecting tissue from xenobiotic accumulation and toxicity. Two members of this group of transporters were included in the present study; p-glycoprotein encoded by MDR1/ABCB1 (MDR1), and the breast cancer resistance protein encoded by BCRP/ABCG2 (BCRP)⁷². Figure 2 depicts the route towards excretion for xenobiotics with different characteristics.

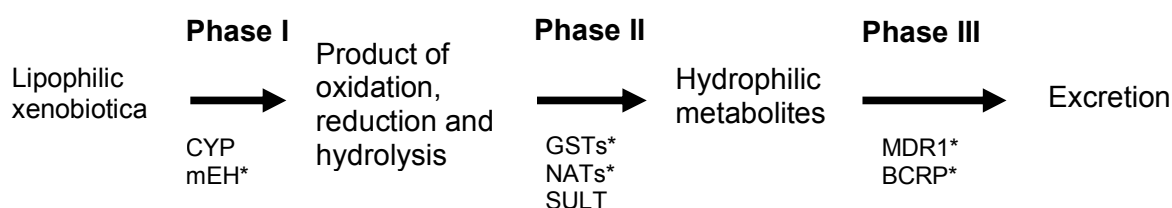


Figure 2. The road towards excretion of xenobiotics.

* denotes enzymes covered in this thesis.

Glutathione S-transferases

Substrates of the Glutathione S-transferase (GST) enzyme family could be by-products of either free radical damage generated during oxidative stress such as fatty acid hydro peroxides or diol-epoxide by-products derived from polyaromatic hydrocarbons originating from incomplete combustion of tobacco smoking⁷³⁻⁷⁷. The GST enzymes share several substrates derived from tobacco smoke. Hence, GST genotype may have a modifying effect on smoking. A previous study found genetic GST variants encoding low (Glutathione S-transferase π (GSTP1 105)) and missing activity (Glutathione S-transferase (GSTM1*0)) to have a modifying effect on smoking increasing the level of inflammation⁷⁸.

microsomal Epoxide Hydrolase

Microsomal Epoxide Hydrolase (mEH) plays an important role in both the activation and detoxification of by-products of polycyclic aromatic hydrocarbons from exogenous chemicals such as tobacco smoke. Two common functional polymorphisms exist in the mEH gene. One, the 113 polymorphic site, resulting in a 40% decrease in enzymatic activity, another, the 139 polymorphic site, resulting in a 25% increase in enzymatic activity^{79;80}. This phase I metabolising enzyme exhibit a dual role and is capable of both detoxification of epoxide intermediates and of participating in metabolic activation of intermediates into more reactive epoxides^{81;82}. Figure 3 illustrates the dual role of mEH by the metabolisation of benzo(a)pyrene.

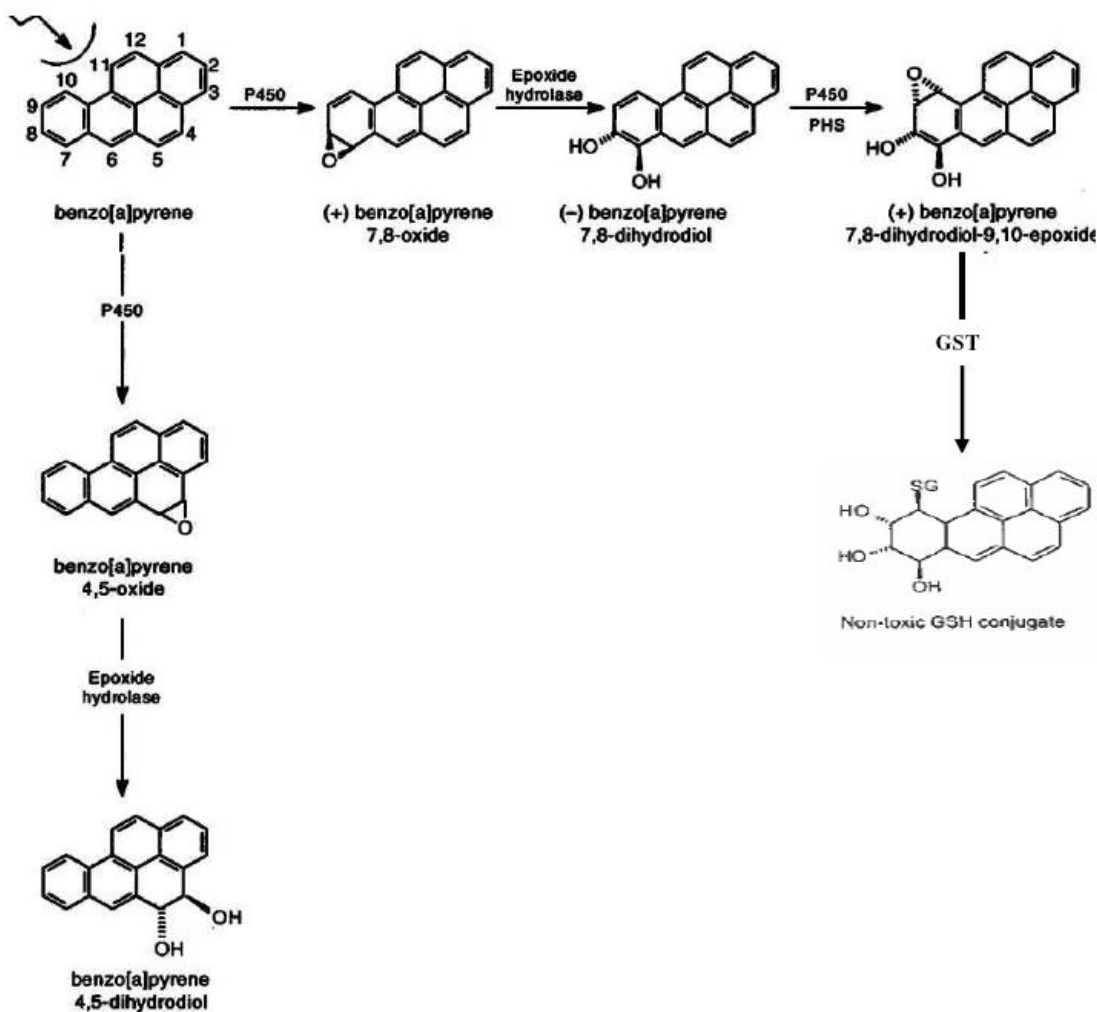


Figure 3. Metabolisation of Benzo(a)pyrene

mEH is involved in the metabolisation of two benzo(a)pyrene derived intermediates. The vertical reaction to the left leads towards benzo(a)pyrene 4,5-dihydrodiol, a less reactive molecule. In the horizontal reaction mEH gives rise to benzo(a)pyrene 7,8-dihydrodiol which act as substrate for generation of the highly reactive benzo(a)pyrene 7,8-dihydrodiol-9,10-epoxide. The vertical reaction to the right is the detoxifying conjugation reaction with glutathione by an enzyme of the GST family.

N-acetyl transferase 2

The N-acetyltransferase 2 (NAT2) enzyme is important in the biotransformation of a number of aryl amines and heterocyclic amines derived from foods, tobacco smoking or other environmental substances⁸³. It is possible that individuals with slow NAT2 acetylator status have a decreased ability to metabolise xenobiotics leading to accumulation which leads to increased permeability in the gastrointestinal tract. The accumulation of xenobiotics are believed to induce an autoimmune mechanism and NAT2 slow acetylator status has been shown to be associated with autoimmune diseases such as systemic lupus erythematosus, rheumatoid arthritis and diabetes mellitus⁸⁴⁻⁸⁶. A Japanese study has shown an association between NAT2 slow acetylator status and CD⁸⁷.

P-glycoprotein and Breast Cancer Resistance Protein

The enzymes P-glycoprotein and Breast cancer Resistance Protein (BCRP) function as intestinal transporter of xenobiotics and are highly expressed in the gut^{88;89}. P-glycoprotein encoded by the Multi Drug Resistance protein (MDR1) gene has shown decreased levels of expression in inflamed tissue in active UC⁸⁹⁻⁹¹. Genetic variants of the MDR1 gene exist and the main focus has been on two polymorphic sites in the gene. The two functional genetic variants have been shown to correlate with the activity and expression of the enzyme, and the two polymorphisms have been associated with IBD in different populations but with conflicting results^{90;92-94}.

BCRP has shown decreased levels of expression in the inflamed mucosa of patients with active UC as was the case for p-glycoprotein^{89;90}. BCRP as a possible susceptibility gene of IBD has not been as intensively investigated as MDR1. A Hungarian study showed no association between two variants of the BCRP gene and IBD⁹⁵.

Hypothesis

CARD15 was the first gene found to confer susceptibility to CD^{43;44}. The variations in CARD15 have shown to display wide ethnic variation, and even display heterogeneity within Western populations and between European countries^{49;51}. The CARD15 variants have consistently shown to display susceptibility only to CD and not UC^{28;96}. Hence, the hypothesis was that CARD15 variations were associated with CD and not with UC in our population, and that phenotypic associations would be likely.

High levels of oxidative stress along with increased intestinal permeability have been observed in IBD⁹⁷⁻⁹⁹. Reactive molecules play a central role in altering the intestinal permeability. Hence, impairment in the biotransformation system responsible for detoxification of reactive substances might be important in the aetiology of IBD. This led to the hypothesis that genetic polymorphisms responsible for low or missing activity of detoxification enzymes are risk factors of IBD. This hypothesis is supported by the common disease – common variant hypothesis^{11;12}. Polymorphisms in detoxification enzymes have been associated with autoimmune disease i.e. systemic lupus erythematosus and rheumatoid arthritis^{84;86}. However, only a few contradictory studies have focused on polymorphisms in detoxification enzymes as possible risk factors of IBD.

Aims

The overall objective of this study was to clarify the extent of three relatively common variations in the CARD15 gene in susceptibility to IBD in our cohort. It was also intended to make a comparison with other Western populations and to determine whether the CARD15 mutations were important regarding disease phenotype (study I). The other main objective of this study was to estimate the significance of the highly polymorphic xenobiotica metabolising enzymes of the GST family (study II), the mEH (study III) and the NAT2 (study III) in susceptibility to IBD in our cohort. Whether the polymorphic enzymes were important for disease phenotype and whether an interaction with smoking was present was also assessed (I, II, III).

The aims were:

1. To assess the significance of three common variations in the CARD15 gene in susceptibility to IBD, and to determine whether any genotype-phenotype correlations were present.
2. To assess the significance of having a genotype encoding low or no enzymatic activity of Glutathione S-transferase μ (GSTM1), Glutathione S-transferase θ (GSTT1) and Glutathione S-transferase π (GSTP1) in susceptibility to IBD, and to determine whether any genotype-phenotype correlations were present.
3. To estimate whether interactions were present between the GST enzymes in susceptibility to IBD.
4. To assess the significance of having the slow acetylator genotype of NAT2 in susceptibility to IBD, and to determine whether any genotype-phenotype correlations were present.
5. To assess the significance of low activity genotype of mEH in susceptibility to IBD, and to determine whether any genotype-phenotype correlations were present.

6. To determine the role of smoking behaviour in susceptibility to CD and UC, and to investigate a possible modifying effect of smoking on GST genotypes, NAT2 acetylator status and mEH genotypes in susceptibility to CD and UC.

METHODS

Study design

The present epidemiologic study was conducted as an observational study of the case-control type. This was concerned with the frequency of exposure (genotype or smoking) in IBD patients (cases) and people without the disease (controls). This type of study is the predominant design when searching for aetiology and causal associations in diseases. Association between exposure and disease was expressed as odds ratios (OR) which represent the odds of exposure in cases divided by the odds of exposure in controls.

Strength and limitations of the study

A great advantage when choosing the case-control design was the possibility to examine many exposures in the same study. A great strength of this study design was that of being able to recruit cases fast. Three hundred and eighty-eight patients with CD and 565 patients with UC were included in the study. The patients were recruited from the outpatient clinics between January 2004 and March 2005 from three Danish hospitals in the cities of Aalborg, Viborg and Herning. A senior registrar reviewed the case record and only patients fulfilling the diagnostic criteria of CD and UC as proposed by Binder were included¹⁰⁰. Patients with indeterminate IBD were excluded, and patients under the age of 18 were also excluded from the study.

The collection of patients was biased by the fact that colectomised patients were not included in the study group because these patients no longer attended routine follow-up consultations. These patients are estimated to represent 10-15% of the patients. A control group of 796 healthy blood donors representative of the general Danish population were recruited from Viborg County during the same period. All participating patients and controls gave written consent and the local Ethical Committee at Aalborg and Viborg County approved the protocol (VN2003/5).

The purpose of the control group was to provide an estimate of the frequency of genetic polymorphisms and smoking status in subjects in the population without the disease. A major challenge in the case-control study design was the selection of a representative control group. The controls in this study were blood donors recruited at Viborg Hospital. Blood donors tend to be healthier than the general population which may be reflected in their genetic profile (discussed in paper III). Recall bias is common regarding exposure in case-control studies. In the present study genetic polymorphisms represent the exposure, thus recall bias was not an issue. Uncertainty of whether the former smokers were smokers at the time of diagnosis, or whether they quit smoking prior to being diagnosed with IBD, may have biased the results when

separating smoking into three groups of current smokers, former smokers, and never smokers. To avoid bias the current smokers and former smokers were grouped together. For a few sub-analyses the ever smoker group were separated into current and former smokers.

Genotyping assays

Two different Polymerase Chain Reaction (PCR) based methods were used to determine the genotype of the different genes in the individual papers I, II and III.

PCR gel based assays

Two steps are included in the PCR gel based assays: PCR amplification by use of specifically designed primers, followed by visualisation using gel electrophoresis. A housekeeping gene is usually used as an internal control of amplification. Primers with similar annealing temperatures are designed for the gene of interest as well as the control gene and are run for 35-45 cycles depending on the assay.

Real-time PCR based assays

The real-time PCR assay visualises the exponential PCR amplification as it progresses, whereas in traditional PCR, results are collected after the reaction is complete. In real-time PCR the quantity of the PCR product is directly proportional to the amount of template.

Allelic discrimination assay

The real-time allelic discrimination assay was used to genotype SNPs (I, II, III). As for the PCR gel based assays a specific set of primers was designed. Besides the primers, two specific probes which recognised the two possibilities at the polymorphic site of the gene of interest were designed. TaqMan technology from Applied Biosystems was used for genotyping in the present studies (I, II, III). The two probes specific for each of the two possible alleles of the polymorphic site was labelled with two different fluorescent dyes at the 5' end (V and F fig. 4). The 3' end was labelled with a quencher (Q, fig. 4), which absorbs the fluorescent emission. The probe anneals to the DNA sequence complementary to its sequence and it is incorporated into the DNA strand. This separates the fluorophore from the quencher and fluorescent emission occurs.

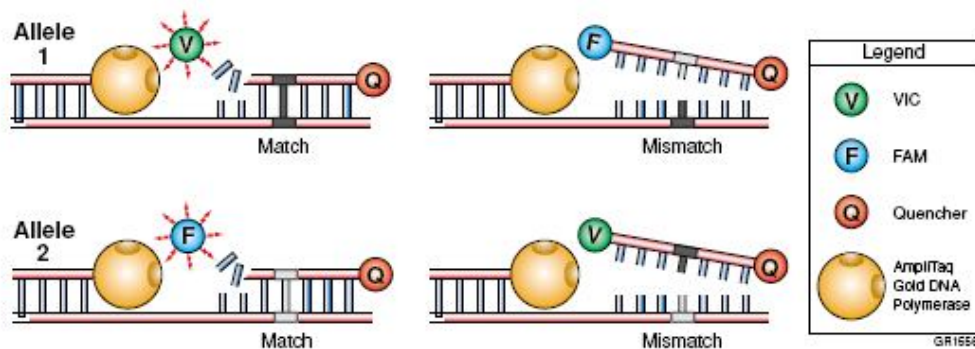


Figure 4. Taq-Man based allelic discrimination

Top: Vic-labelled probe recognises its target allele 1 and is incorporated during the amplification of DNA. The FAM-labelled probe does not recognise allele 1. Bottom: The FAM-labelled probe recognises its target allele 2 and is incorporated during the amplification of DNA. The Vic-labelled probe does not recognise allele 2. Figure from manual supplied with the HT7900 Real-time apparatus from Applied Biosystems.

This emission represents the amplification of products in real-time. Figure 5 shows a signal for both fluorescent dyes. Hence, this sample is heterozygous for the polymorphic site. If the sample had been homozygous for either the wild type or the variant, only one curve would show. For allelic discrimination assays a scatter plot is produced for each run, which allows for a fast check of the results. Figure 6 (on the following page) represents the genotype callings made by the system for an allelic discrimination run from the genotyping of NAT2 (III).

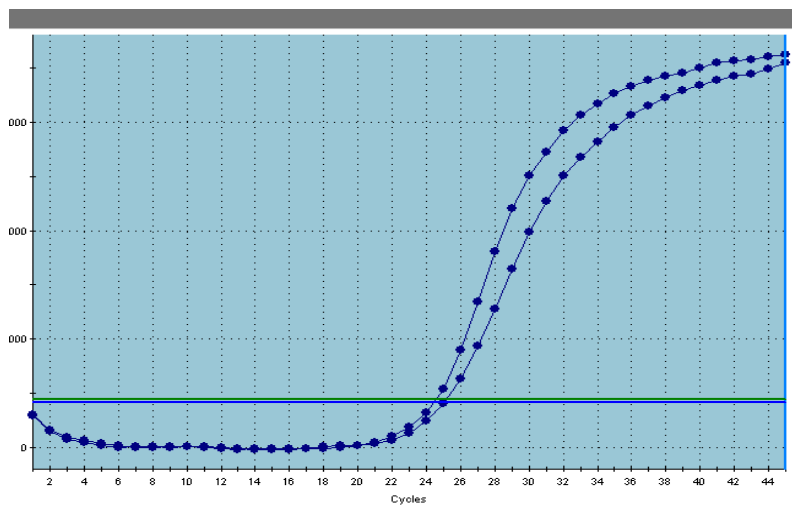


Figure 5. Amplification curves of real-time assay

Amplification curves for a sample being heterozygous for the polymorphic site investigated. Each curve represents a signal for one specific fluorescent dye.

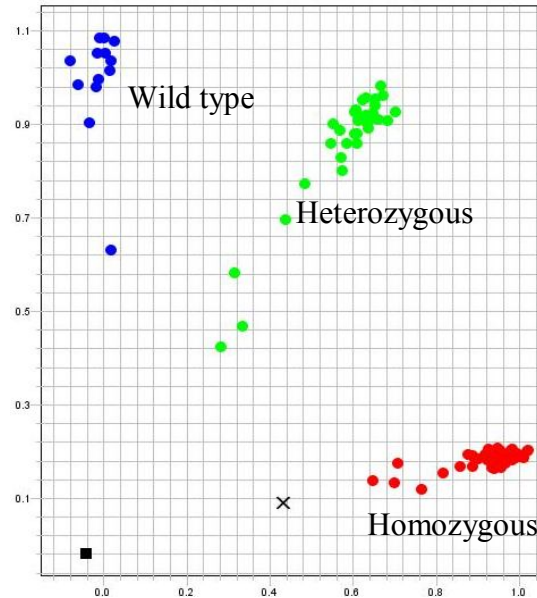


Figure 6. Allelic discrimination scatter plot

Scatter plot of allelic discrimination run. Circles in upper left corner represent the wild type genotype, circles in the lower right corner represent the homozygous variant genotype, and circles along the diagonal represent the heterozygous genotype. The black square is a negative control. The x is a genotype not called by the system.

Relative quantification assay

In the relative quantification real-time assay a target gene and a reference gene are amplified in the same tube. For the method to be valid, the efficiency of the target gene amplification and the efficiency of the reference gene amplification must be approximately equal. This method compares the threshold cycle of one target gene to a reference housekeeping gene in a single sample.

Genotyping assays used in the thesis

Genotyping of CARD15

The allelic discrimination design was chosen for genotyping of the three common CARD15 variants (I). The primers and probes used as well as the concentrations and the run parameters are described in detail in paper I. Direct sequencing of the three common variants was used for validation of the assay using primers from King et al Human Mutation Suppl. Online Nov. 2005. Another approach for genotyping CARD15 on the entire cohort could be direct sequencing. This would have been the method of genotyping if searching for rare private for the genotyping of the entire cohort, which would have been the preferable technique if we were searching for rare private mutations in our cohort.

Genotyping of GSTT1

The PCR gel based assay was used only to genotype GSTT1 (II). A primer pair specific for the commonly deleted region in GSTT1 was designed. This resulted in an amplification product of 480 bp when the GSTT1 was present on either one or both alleles. Hence, having the GSTT1*0 genotype lead to no amplification. A primer pair specific for amplification of a 299 bp product of the β -globin gene was used as an internal control of amplification. The primers, reaction mix and incubation information are listed in paper II. The PCR products were separated by size using agarose gel electrophoresis and visualised by an intercalating dye. Figure 7 shows an image from the genotyping of GSTT1 (II).

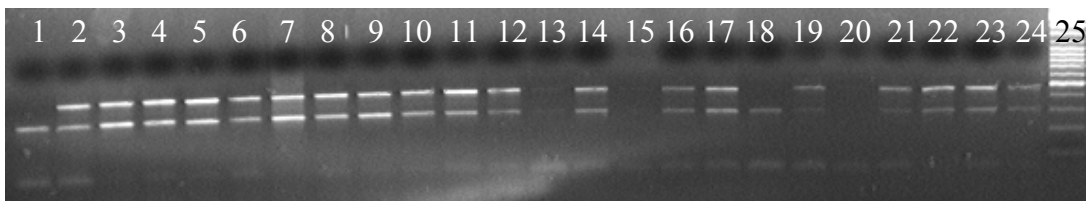


Figure 7. Image of the GSTT1 genotyping

Lanes 1 and 18 showing only the 299 bp β -globin product represents the null variant GSTT1 genotype (GSTT1*0). Lanes 2-17, and 19 show both the 299 bp β -globin product and the 480 bp GSTT1 product. These individuals are positive for GSTT1, thus they have one or two GSTT1 alleles. Lanes 21-24 are positive controls for GSTT1. Lane 25 is a molecular size marker. The signals from lane 13, 15 and 20 were weak and the samples were repeated.

Genotyping of GSTM1

An in-house PCR gel based technique was available for genotyping of GSTM1 but the assay was not as robust as for GSTT1. The annealing temperature had to be changed constantly and it was difficult to interpret the result from the gel image. Hence, it was decided to use a real-time PCR based assay for genotyping GSTM1 to make sure the results were valid.

This design was used for genotyping of GSTM1 which exhibit a variant where the entire gene is deleted¹⁰¹ (II). The method is somewhat similar to the allelic discrimination method but in this study one of the labelled probes anneal to the GSTM1 gene, if present, and the other probe to a reference gene. With this type of assay determining copy number variation is possible, but we did not use this opportunity. The first published improved real-time PCR methods to determine copy number variation in GSTM1 and GSTT1 relied on the use of fixed concentrations of sample DNA and triple determinations of each sample^{102;103}. For the present study the main interest was to identify the persons homozygous for the GSTM1 deletion variant

(GSTM1*0) and no discrimination were made between copy number variation of GSTM1 (being homozygous or heterozygous for the GSTM1 allele) (II). Thus, only single determination was necessary. Recently a high-throughput single determination genotyping method of copy number variation was published¹⁰⁴. The determination of copy number variation in GSTM1 could become relevant for future studies examining the role of GSTM1 genotype in relation to adverse effects of azathioprine treatment in IBD patients^{105;106}. Another approach to determine the copy number variation of GSTM1 is to use the Multiplex Ligation dependent Probe Amplification (MLPA) by MRC-Holland which offers a panel containing several xenobiotica metabolising enzymes¹⁰⁷.

Genotyping of GSTP1

The allelic discrimination design was chosen for genotyping of the two specific GSTP1 polymorphic sites (II). The primers and probe sequences are listed in paper II. The reaction set-up and run parameters were identical to those for the CARD15 genotyping and are also described in paper II.

Genotyping of mEH

For genotyping of the two mEH polymorphic sites the allelic discrimination design was chosen (III). Commercially available assays from Applied Biosystems specific for the two polymorphic sites were used and the run parameters are listed in paper III. The allelic discrimination assay was chosen in preference to a conventional PCR gel based assay due to a report of genotyping errors from a PCR based assay in a previous publication¹⁰⁸. This publication showed an association between low activity of mEH and CD. Due to a questioning of their results the group came up with a reanalysis of their cohort using a real-time PCR based assay and was not able to reproduce the positive association between low activity of mEH and CD^{109;110}.

Genotyping of NAT2

The NAT2 genotypes can be divided into three phenotypic categories of rapid, intermediate and slow acetylators. The NAT2 acetylator status is determined by a number of SNPs. A combination of six relatively common SNPs in NAT2 was used to decide the acetylator status in study III. Haplotype determination for the large study group used in this thesis was laborious. The haplotype determination was performed by hand, but in many cases several haplotypes were possible. The NAT2PRED web server is an extremely useful tool in assigning individual acetylator status from the SNPs without having to determine the haplotypes¹¹¹. The NAT2PRED

is based on a dataset of 1377 individuals (94% Caucasians). The performance was high with sensitivity and specificities ranging between 99.6 and 100% for determining the three acetylator phenotypes¹¹¹. The ability of the NAT2PRED web server has been assessed by a study including 8489 individuals from 56 populations with different geographic origin¹¹². The conclusion from this study was that the server correctly identified the slow acetylator phenotype with more than 99% sensitivity in all populations outside Sub-Saharan Africa where another variant, the 191 G>A SNP, plays an important role¹¹³. The classification error rate found in the evaluation study implied that the NAT2PRED is poor at distinguishing between fast and intermediate acetylators. The classification error rate was though not high in European populations¹¹². The data were submitted for each of the six SNPs for all the participants in this study and the results were returned by email. The results listed the probability of all three acetylation phenotypes for each individual. The intermediate and fast acetylators were grouped for data analysis in our study as suggested by the NAT2PRED evaluation study¹¹².

Table 1 depicts the acetylation calls (prediction) for 10 samples from our cohort. The prediction for index 10 was not very secure. In total 7 of 1716 calls were in the range of 0.5-0.6 all resulting in a rapid genotype call. (See Table 1 footnotes for further information).

Table 1. Acetylation callings from the NAT2PRED webserver

index	genotype	p(R)	p(I)	p(S)	prediction
1	1,1,1,1,1,1	0.97995	0.01221	0.00784	R
2	3,1,1,3,1,1	0.00116	0.00126	0.99758	S
3	3,1,1,3,1,1	0.00116	0.00126	0.99758	S
4	1,3,3,1,3,1	0.00164	0.00118	0.99718	S
5	1,3,2,1,3,1	0.00164	0.00118	0.99718	S
6	1,3,3,1,3,1	0.00164	0.00118	0.99718	S
7	1,2,2,1,2,1	0.00100	0.99696	0.00203	I
8	3,2,2,1,2,2	0.00001	0.00126	0.99874	S
9	1,3,3,1,3,1	0.00164	0.00118	0.99718	S
10	1,1,2,1,1,1	0.61518	0.14525	0.23957	R

Index is the number of the individual. Genotype cover the genotypes for each of the six polymorphic sites separated by a comma: 1 is wildtype homozygous, 2 is heterozygous, 3 is homozygous for the variant. p(R), p(I) and p(S) are the probabilities for the three callings Rapid, Intermediate and Slow acetylator status. Prediction is the actual call made by the server: R=Rapid, I=Intermediate and S=Slow. The results were returned by email.

Genotyping of MDR1 and BCRP

Genotyping of MDR1 and BCRP on our study population was performed by one of our collaborators, MSc. PhD, Mette Østergaard at Viborg Hospital. An allelic discrimination assay was used to genotype the polymorphic sites G2677T/A and C3435T and intron variant G-

rs3789243-A SNPs of MDR1 and C421A in BCRP. The primers and probes used are listed in table 2 which is a modified version from the original paper⁷². The concentrations and annealing temperatures are also described in table 2. The allelic discrimination was performed in a 25 ml reaction volume containing 1XTaqMan Universal Master Mix (Applied Biosystems, Foster City, Calif., USA), primer and probe concentrations were as described in table 2, and 1 l DNA was added. The reaction conditions were: 2 min at 50°C, 10 min 95°C, followed by 50 cycles of 20 s denaturation at 95°C, 60 s annealing/elongation at an assay-specific temperature, according to table 2.

Genotype controls were selected among control samples and verified by sequencing analyses, using the BigDye Terminator v3.1 Cycle Sequencing kit from Applied Biosystems according to the manufacturer's recommendations. For each SNP, 20 samples randomly selected within each of the three genotype groups were repeated to confirm reproducibility. Deviant amplification plots and dual-colour scatter plots in MDR1 2677 runs were repeated and then subjected to sequencing analysis in order to analyse for the presence of the rarer 2677A variant.

Table 2. Genotyping of MDR1 and BCRP

Primers and probes		Concentration Primer/Probe (nM)	Annealing temperature (°C)
MDR1-2677forward MDR1-2677reverse MDR1-2677G MDR1-2677T	5'GTTGTCTGGACAAGCACTGA 5'ATCAATCATATTTAGTTTGACTCACC HEX-CCAGCACCTTCTAGT-BHQ1 FAM-CCCAGAACCTTCTAGTT-BHQ1	300/150/100*	60
MDR1-3435forward MDR1-3435reverse MDR1-3435C MDR1-3435T	5'GCCTATGGAGACAACAGCCG 5'CGATGAAGGCATGTATGTTGGC HEX-AAGAGATCGTGAGGGC_BHQ1 FAM-AAGAGATTGTGAGGGC_BHQ1	300/200	62
Grs3789243A forward Grs3789243A reverse rs3789243G rs3789243A	5'ACCTTACAAATAAGTCTCAACATTCTCTG 5'CCCAGACAATAAGCCCAAGATCC HEX-AACGACGCCCATAA-BHQ1 FAM-CAACGACGCTCCATAAATT-BHQ1	900/200	62/72**
BCRP-421forward BCRP-421reverse BCRP-421C BCRP-421A	5'ATGTTGTGATGGGCACTCTG 5'CATGATTCGTCATAGTTGTTGCA HEX-AACTTACAGTTCTCAGCA_BHQ1 FAM-AACTTAAAGTTCTCAGCA_BHQ1	300/150	62

BHQ=black hole quencher. Reaction concentration of primers and probes, as well as the annealing/elongation temperature are given. *Wild-type-specific probe 150 nM, variant (mutant)-specific probe 100 nM; **elongation was split in the MDR1 rs3789243 assay; annealing at 62°C for 30 s, followed by elongation at 72°C for 30 s. Primers were purchased from DNA Technology (Aarhus, Denmark) and probes from Proligo. The reactions were run on a Stratagene Mx3000 machine (Stratagene, La Jolla, Calif., USA), using the allelic discrimination feature of the MxPro software (Stratagene).

RESULTS - RISK FACTORS OF IBD

Smoking

Smoking has been found to be an independent risk factor of CD and current smoking to have a protective effect against UC, which was also true for this study population^{58;59}(I). Ever smoking was associated with CD with an OR of 1.8 (1.4-2.3), ($P<0.001$), whereas current smoking had a protective effect against UC with an OR of 0.7 (0.5-0.9), ($P=0.015$) (Table 3). The score of the ORs were similar to what has been found in a large number of studies¹¹⁴. Extensive research has been made concerning the dual effect of smoking on IBD. A recent publication shared some thoughts as to why current smoking has a protective effect against UC⁵⁵. Intestinal permeability is known to be high in UC patients⁶⁷. The mucus thickness has shown to be shallower in UC compared with CD⁵⁵. Nicotine has shown to enhance mucosal production, thus this could possibly strengthen the epithelial barrier in UC hereby decreasing the intestinal permeability⁵⁵. Smoking reduces rectal blood flow, which may cause less recruitment of pro-inflammatory mediators to the rectum, thus protecting against sustained inflammation.

Table 3. Association between smoking behaviour and IBD in the cohort.

Smoking status	OR (95%CI) <i>P</i> -value	
	CD	UC
Ever smoker	1.8 (1.4-2.3) $P<0.001$	1.1 (0.9-1.4) $P=0.28$
Current smoker	2.6 (2.0-3.5) $P<0.001$	0.7 (0.5-0.9) $P=0.015$

OR=Odds ratio, 95%CI=95% confidence interval, *P* =*P* value.
CD=Crohn's disease, UC=Ulcerative colitis.

CARD15

We found that harboring at least one CARD15 variant to be associated with CD but not UC in the Danish population (I). The OR for a CD patient carrying one CARD15 variant was 1.9 (1.3-2.8), $P<0.001$ (I). A gene-dosage effect was observed in the population raising the OR to 21.1 (4.9-91.2), $P<0.001$ for carrying two CARD15 variants (I). In comparison the ORs were 2.4 (2.8-8.0) and 6.7 (4.1-10.9) respectively in a large meta-analysis of 79 studies (in which our study was also included)¹¹⁵. The confidence interval for carrying two variants was wide in our study compared with that of the meta-analysis. These numbers suggest that the OR of 6.7 for CD patients carrying two variants is more likely than our OR of 21.1 (Table 4).

The susceptibility to CD is inherent in the R702W SNP and in the 1007insC frame-shift mutation, whereas the rare G908R SNP was not associated with CD in our population (I).

The frequencies of the three variants in the control group of our population was similar to those of a recent publication of more than 38 000 healthy Danes (Table 4)¹¹⁶. When comparing the frequencies with a meta-analysis of 3500 healthy Caucasians our findings are similar to the findings in other Northern European countries, which in general has a lower CARD15 variant frequency than other European countries⁴⁹.

Table 4. Distribution of CARD15 variants in the Danish population

CARD15 variants	n, (%)		
	CD	UC	HC
Ernst et al (I)			
R702W alleles	*40 (5.5)	36 (3.3)	44 (2.8)
G908R alleles	11 (1.5)	9 (0.8)	16 (1.0)
1007insC alleles	**46 (6.4)	12 (1.1)	19 (1.2)
0 variant	365 (79.4)	504 (89.8)	718 (90.3)
1 variant	^61 (15.9)	56 (10.0)	75 (9.4)
2 variants	^^18 (4.6)	1 (0.2)	2 (0.3)
Least 1 variant	^^^79 (20.6)	57 (10.2)	77 (9.7)
Yazdanyar et al 2009¹¹⁶			
0 variants			38592 (87.0)
1 variant			4838 (12.5)
2 variants			164 (0.4)
Least 1 variant			5002 (13.0)

*R702W allele frequency in CD patients versus controls: OR=1.9 (1.3-3.0) $P=0.02$.

**1007insC allele frequency in CD patients versus controls: OR=5.3 (3.1-9.1) $P<0.001$.

^CARD15 1 variant genotype frequency in CD patients versus controls OR=1.9 (1.3-2.8) $P<0.001$.

^^CARD15 2 variants genotype frequency in CD patients versus controls OR=21.1 (4.9- 91.2) $P<0.001$.

^^^CARD15 at least 1 variant genotype frequency in CD patients versus controls OR=2.4 (95% confidence interval (1.7-3.4) $P<0.001$). OR=Odds ratio, 95%CI=95% confidence interval, $P=P$ value.

CD=Crohn's disease, UC=Ulcerative colitis.

Compatible with the high expression of CARD15 in the Paneth cells of the ileum, the CARD15 variants were associated with ileal involvement in CD. The OR was 2.6 (1.5-4.5), $P=0.001$, for carrying at least one CARD15 variant (I). When considering the three CARD15 variants separately, the association with ileal involvement of CD reached only statistical significance for the 1007insC frame-shift mutation (I). This association between CARD15 variants and disease location in CD patients have been demonstrated in the majority of association studies¹¹⁷⁻¹²⁰. A weak association was found between CARD15 variants and less than 40 years of age at disease onset with an OR of 2.0 (1.0-4.0), $P=0.038$. Smoking was found to confer risk of CD and to display a protective effect of UC, but no modifying effect of smoking on CARD15 genotype was found for either CD or UC (I). Summarised study I found an association between two relatively common CARD15 variants (R702W and 1007insC) and CD.

The association was strongest for the 1007insC mutation and a gene-dosage effect was observed. CARD15 seemed to influence disease phenotype by affecting disease onset and the 1007insC variant was associated with ileal involvement in CD. No direct association or phenotypic associations was found between CARD15 variants and UC (I).

Xenobiotica metabolising enzymes

Glutathione S-transferase family

Genotyping of GSTM1 resulted in very similar frequencies within the three groups of CD patients, UC patients and healthy controls in our population (II) (Table 5). The findings were similar to the findings in three previous European studies^{108;121;122} (Table 5). An Indian study found a significant association between GSTM1*0 and UC¹²³. The frequency of the GSTM1*0 genotype in the Indian UC patients (61%) was similar our study group (53%), but the difference appear to reside in the control populations where the GSTM1*0 genotype has shown to be less frequent in the general Indian population (30%)^{124;125}. (Table 5).

The frequencies of the Glutathione S-transferase θ null variant genotype (GSTT1*0) were also similar between the three groups of CD, UC and healthy controls in our population (II) (Table 5). Higher frequencies of GSTT1*0 were found in two previous European study populations (II). The GSTT1*0 frequency is generally lower in Scandinavian populations, thus, the outcome of the studies were the same, with no difference in GSTT1*0 frequency between IBD patients and healthy controls^{108;121;126}. In the previously mentioned Indian study a strong association was found between GSTT1*0 and both UC and IBD¹²³. Ethnic differences are expected in susceptibility genes, but the fact that very few IBD patients were recruited in the Indian study could very likely have biased the results. Further research into whether GSTM1*0 and GSTT1*0 genotypes are truly associated with IBD in the Indian population are needed.

The distribution of GSTP1 low activity genotypes (GSTP1 105 low and GSTP1 114 low) found in our cohort, were in agreement with previous findings in Caucasian populations^{108;126} (Table 5). Research regarding other diseases has shown GST genotypes to be risk factors of disease only when present in combination and not as a single gene⁷³. Hence, it could be expected that combinations of several of the GST genotypes might be necessary to induce susceptibility to IBD. However, no association was found between any combination of having GSTM1*0, GSTT1*0 and GSTP1 low activity genotypes and IBD in our study (II).

Early onset disease has been associated with high familial prevalence of CD, hence, suggesting a stronger genetic contribution in this group of patients^{15;51;127}. We were not able to replicate a Swedish finding of an association of GSTM1*0 and early onset of UC¹²². With regard

to phenotypic association in general we found no association between GST genotypes and the phenotypic behaviours of early onset of disease, localisation of disease and severity of disease in our study population (II). Neither did we find any indication of GST single gene or a combination of several of the GST genotypes to cause susceptibility to IBD in our study population (II). Hence, GST genotypes do not seem to play an important role in susceptibility to IBD.

Table 5. GST genotypes among IBD patients and healthy controls in different populations

Genotype	Distribution of GST genotypes n, (%)		
	CD	UC	HC
GSTM1*0			
Ernst et al (II)	215 (56)	296 (53)	417 (53)
Hertvig ¹²²	65 (60)	101 (56)	219 (49)
Duncan et al ¹²¹	68 (62)	112 (49)	203 (54)
De Jong et al ¹⁰⁸	82 (54)		74 (50)
Mittal et al ¹²³	9 (45)	52 (61)	49 (30)
GSTT1*0			
Ernst et al (II)	66 (17)	82 (15)	104 (13)
Duncan et al ¹²¹	17 (16)	52 (24)	47 (18)
De Jong et al ¹⁰⁸	23 (15)		30 (20)
Mittal et al ¹²³	18 (90)	77 (91)	26 (16)
GSTM1*0 & GSTT1*0			
Ernst et al (II)	36 (9)	44 (8)	50 (6)
Duncan et al ¹²¹		10 (13)	
De Jong et al ¹⁰⁸	*(7)		*(13)
Mittal et al ¹²³	4 (20)	28 (33)	8 (5)

CD=Crohn's disease. UC=ulcerative colitis. HC=healthy controls.
 GSTM1*0:GSTM1 null genotype.
 GSTT1*0: GSTT1 null genotype.
 GSTM1*0 & GSTT1*0: GSTM1 null and GSTT1 null genotype.
 *only percentages available in paper.

By-products from tobacco smoke are likely substrates of the GST enzymes and current smoking seems to have a protective effect against UC. This was supported in the current study where an interaction was found between GSTM1*0 and smoking for UC patients, with GSTM1*0 genotype strengthening the protective effect of smoking (II). One might speculate the GSTM1 active genotype could eliminate or reduce the protective effect of smoking in UC, whereas the GSTM*0 genotype does not interrupt the protective effect of tobacco smoking.

N-acetyltransferase 2

We were not able to replicate a Japanese finding of a positive association between NAT2 slow acetylator status and CD(III)⁸⁷. In our study the frequency of NAT2 slow, intermediate and rapid acetylators was in agreement with the findings from another Caucasian study population (II)¹²⁸. Highly different frequencies of NAT2 acetylator status are found between different ethnic groups. The NAT2 rapid acetylator genotype is present in less than 10% in Caucasian populations and in populations of African descent^{129;130}. The NAT2 slow acetylator genotype varies between 50-65% in these populations¹³¹(III). In Asian populations the NAT2 slow acetylator genotype is less frequent ranging between 10-25% but with great differences between countries¹³¹ (Table 6). An overrepresentation of NAT2 slow metabolisers have been shown among aryl-amine exposed bladder cancer patients compared with healthy controls in Caucasian populations¹³¹. In contrast, the NAT2 slow metabolisers have been shown to be underrepresented among aryl-amine exposed bladder cancer patients in a Chinese population. This indicates that pathways other than NAT2 could be involved in the metabolism of aromatic amines¹³². This example demonstrates that genetic risk factors may only be risk factors in some ethnic populations not only because of interaction with environmental exposure differences, but possibly also depending on the general prevalence of the genetic variant in the given population.

Table 6. NAT2 acetylator status in healthy controls of different populations

NAT2 acetylator status in healthy controls of different populations n, (%)			
(Origin of population)	Rapid	Intermediate	Slow
Ernst et al (II) (Caucasian)	44 (6)	300 (38)	443 (56)
Kiyohara et al ⁸⁴ (Japanese)	^(30)	^(49)	^(21)
Inatomi et al ¹³¹ (Japanese)*			10 (7)
Su et al ¹³¹ (Taiwan)*			13 (13)
Kim et al ¹³¹ (Korean)*			24 (11)

* Taken from Golka et al¹³¹ ^only percentages available in paper

We found no evidence of NAT2 playing a key role in phenotypic characteristics of disease regarding either UC or CD (III). Nor was any interaction between NAT2 and smoking found in susceptibility to IBD (III). In conclusion, NAT2 does not seem to be important in susceptibility to IBD in the Danish population (III).

microsomal Epoxide Hydrolase

We found no association between either of the two mEH polymorphic sites 113 or 139 or a combination of the polymorphisms with IBD (III) (Table 7). The findings are in agreement with two previous European studies using the same genotyping procedure^{109;110}.

Table 7. Distribution of mEH genotypes

		mEH polymorphic sites (n, (%))						
		mEH 113 genotypes			mEH 139 genotypes			
		High	Intermediate	Low	High	Intermediate	Low	
CD		177 (47)	167 (44)	36 (9)	CD	21 (6)	118 (32)	235 (63)
UC		286 (52)	225 (41)	42 (8)	UC	25 (5)	190 (35)	335 (61)
HC		373 (47)	359 (45)	61 (8)	HC	42 (5)	284 (36)	466 (59)
		mEH combined genotypes						
		High	Intermediate	Low				
CD		67 (18)	166 (44)	142 (38)				
UC		101 (19)	278 (51)	167 (31)				
HC		156 (20)	363 (46)	274 (35)				

CD=Crohn's disease. UC=Ulcerative colitis. HC=Healthy controls.
Percentages may not add up to exactly 100% due to rounding.

The dual role of mEH meant that we had to consider the possibility of both low and high activity mEH genotypes as possible risk factors. Analysing the mEH high activity genotype against low and intermediate activity genotypes an association with diagnosis of CD before age 40 was found with an OR of 2.2 (1.1-4.2), $P=0.02$. The association was expected to be stronger among smokers, because of the dual role of mEH towards benzo(a)pyrene of tobacco smoke, but when analysing ever smokers isolated the association did not reach statistical significance (II). This finding could possibly be biased by the small numbers in this sub-grouping of patients. Thus, the results indicate that mEH may influence the age at disease onset among CD patients but further research on a larger population is needed to clarify this. No other phenotypic associations were found.

Dealing with mEH a trend towards a modifying effect of smoking on low mEH activity genotype was found for both CD and UC patients. Thus, smokers with a low activity mEH genotype may have a higher risk of developing IBD compared with never smokers (III). Hence, mEH may be important in susceptibility of IBD in combination with environmental factors.

Xenobiotic transporters MDR1 and BCRP

In the xenobiotica transporter gene MDR1 two functional polymorphic sites were genotyped, the G2667T/A and C3435T variants, and an intron-variant G-rs3789243-A⁷². No association was

found between the two functional variants, G2667T/A and C3435T, and either UC or CD⁷². The intron-variant G-rs3789243-A was weakly associated with CD which was in contrast to the associative finding with UC found in a Scottish study⁹⁴ (Table 8). Combining the three variants into different haplotypes did not reveal an association with IBD either. Encouraged by the conflicting findings regarding MDR1 as a susceptibility gene of IBD, two meta-analyses have been made both showing the C3435T polymorphic site to influence susceptibility to UC but the effect is small^{133;134} (Table 8). The two meta-analyses failed to show an association between the tri-allelic G2677T/A polymorphic site and IBD. No disease phenotypic associations were found for the genetic variants in the meta-analyses. The findings indicate that the contribution to IBD from the MDR1 gene may vary among different populations and may also be dependent on population specific environmental factors¹³⁵.

Our study was confirmative of these findings with very similar allele frequencies of the MDR polymorphic variants investigated. The BCRP variant investigated was not associated with IBD supporting the Hungarian study, hence BCRP does not seem to play an important role in aetiology of IBD^{72;95}.

Table 8. Associations between MDR1 variants and IBD.

MDR1 variant	OR (95%CI) P-value	
	CD	UC
C3435T		
Østergaard, Ernst et al ⁷²	0.8 (0.6-1.1) P=0.12	0.8 (0.6-1.1) P=0.15
Onnie ¹³³	1.0 (0.9-1.1) P>0.05	1.1 (1.0-1.2) P=0.013
Annese ¹³⁴	-	1.1 (1.1-1.3) P=0.003
G-rs3789243-A		
Østergaard, Ernst et al ⁷²	1.4 (1.0-1.9) P=0.05	1.3 (1.0-1.5) P=0.09
Ho et al ⁹⁴	1.2 (0.7-2.0) P=0.67	1.8 (1.1-2.9) P=0.04

OR=Odds ratio, 95%CI= 95% confidence interval, P =P value.
CD =Crohn's disease, UC=Ulcerative colitis.

CONCLUSION AND PERSPECTIVES

The frequencies of the CARD15 variants were similar to the findings from other Northern European countries. Harboring at least one of three common CARD15 variants was associated with CD but not UC in the Danish population, and a stronger association was found for being homozygous for the CARD15 variants compared with being heterozygous (I). The susceptibility was inherent in two of the three common CARD15 variants, the R702W and the 1007insC, the latter displaying the strongest susceptibility to CD. CD patients carrying at least one CARD15 variant were more likely to have ileal disease than CD patients with no CARD15 variants (I). A weak phenotypic association was found between carrying at least one CARD15 variant and early onset CD (I). No disease susceptibility and no phenotypic associations were found between CARD15 and UC (I). Smoking was found to confer risk of CD and current smoking to be a protective factor of UC, but no modifying effect of smoking on CARD15 genotype was found for either CD or UC (I).

GSTM1, GSTT1 and GSTP1 did not confer susceptibility to either CD or UC, and no disease phenotypic associations were found (II). Combining members of the GST family did not reveal any association with either CD or UC (II). A modifying effect of smoking was found on GSTM1 genotype. Harboring the GSTM1*0 genotype seemed to strengthen the protective effect of current smoking with regard to UC (II).

NAT2 did not confer susceptibility to either CD or UC and no disease phenotypic associations were found (III). No modifying effect of smoking was found on NAT2 acetylator status, thus NAT2 does not seem to play an independent role in IBD (III).

No association was found between either of the two polymorphisms in mEH or the combined mEH genotype and IBD (III). One possible phenotypic association was found, that of mEH high activity genotype and early onset CD (III). An indication of a possible modifying effect of smoking on mEH genotype was found for both CD and for UC (III).

Perspectives

It is a general opinion that IBD is based on a dysfunctional immune response, but the exact mechanism is unknown. Increased intestinal permeability also plays an important role in IBD but one might speculate what comes first; intestinal permeability leading to enhanced bacterial sensing which induces an immune response, or an exaggerated immune response which results in a great production of reactive by-products which may alter the intestinal barrier? The extremely complicated nature of the immune system makes it very difficult to find isolated genetic variants which contribute independently to disease pathogenesis. This particular thesis

focused on genetic susceptibility from variants in enzymes of the xenobiotica metabolising system, which is also a very complicated system comparable with the immune system. A combination of various genetic variants is possibly responsible for the genetic susceptibility to IBD and individual genetic variants confer only a modest disease risk which may be very difficult or impossible to demonstrate. Environmental factors also have a substantial role in disease susceptibility to complex diseases. Exposure to environmental factors might be very difficult to measure which further complicates the finding of true risk factors of IBD. IBD is currently emerging in Asia which leaves us with a great opportunity to investigate the shift in environmental exposures in that part of the world. Hopefully this will add knowledge to how environmental factors influence disease aetiology. The CARD15 variants have shown susceptibility to CD only in the Western world and not in the Asian world. This indicates that the genetic susceptibility to IBD differ in different populations. Identification of specific genetic susceptibility genes is important and may help decode the pathways essential to disease pathogenesis. The many susceptibility genes that have been uncovered from the GWA studies have shown to participate in specific pathways, which may lead to a better understanding of the disease and may also improve the treatment. The xenobiotica metabolising enzymes investigated in this thesis did not prove to cause susceptibility to IBD. This may however, be important in predicting which patients might develop adverse effects in response to treatment with certain pharmaceuticals. GSTM1 has demonstrated its importance in relation to adverse effects of treatment with pharmaceuticals containing azathioprine^{105;106}. Looking for copy number variation in GSTM1 in relation to adverse effects of azathioprine treatment is something we plan to investigate in the near future. NAT2 slow acetylator status has shown to be associated with adverse effects of sulfasalazine treatment of IBD in Asian populations^{136;137}. We already have the NAT2 acetylator status of the large group of IBD patients included in this thesis and we will probably look into this also.

SUMMARY IN DANISH

Kronisk inflammatorisk tarmsygdhed dækker over sygdommene colitis ulcerosa og morbus Crohn. Studier har vist, at en række faktorer er involveret i inflammationsprocessen ved kronisk inflammatorisk tarmsygdhed. Medfødt genetisk prædisposition, immunsystemet og miljømæssige elementer er alle medvirkende faktorer i udvikling og forløb af sygdommene. Sygdommene har historisk set været en byrde overvejende i den vestlige verden, men de seneste årtier har incidensen været stigende i Asien. Den hurtige stigning tydeliggør betydningen af miljømæssige påvirkninger i ætiologien af kronisk inflammatorisk tarmsygdhed.

Variationer i CARD15 genet, der koder for et protein der genkender bakteriedelev, var det første gen der viste sig at prædisponere til morbus Crohn, men ikke til colitis ulcerosa. De seneste års intensive genom associations studier har bidraget betydeligt med nye genetiske risikofaktorer. Nogle af disse gener er fælles for sygdommene, men flere er specifikke for enten colitis ulcerosa eller morbus Crohn. Desuden viser flere studier, at der er store etniske forskelle i udbredningen af de fundne genetiske risikomarkører. Tre varianter i CARD15 genet der prædisponerer for morbus Crohn er eksempelvis ikke nær så hyppige i Skandinavien sammenlignet med andre europæiske lande, og er ikke til stede i Asien. Der er også store etniske forskelle i miljøpåvirkninger, hvilket gør det kompliceret at finde sande genetiske og miljømæssige risikofaktorer. Tobaksrygning er den bedst undersøgte miljømæssige faktor. Det har vist sig at rygning forøger risikoen for at udvikle morbus Crohn, men at det har en beskyttende effekt mod udvikling af colitis ulcerosa.

I et case-control studie undersøgte vi hyppigheden af tre CARD15 variationer i den danske befolkning. To af de tre hyppige variationer var associeret med morbus Crohn, men var ret sjældne i Danmark sammenlignet med andre europæiske lande.

Patienter med kronisk inflammatorisk tarmsygdhed har en øget permeabilitet over tarmvæggen. Det ledte til vores hypotese om at en lav aktivitet af enzymer, der omsætter fremmedstoffer lokalt i tarmen, kunne forårsage skade på tarmepitelet. Dette var en mulig risikofaktor for udvikling af kronisk inflammatorisk tarmsygdhed. Flere af disse enzymer (samlet under betegnelsen xenobiotika metaboliserende enzymer), har hyppige gen polymorfier der påvirker enzymaktiviteten. Vi undersøgte om nogle af disse polymorfier var associeret med kronisk inflammatorisk tarmsygdhed i Danmark, men vi fandt ingen evidens for at det var tilfældet. Vi undersøgte også for en mulig interaktion mellem gen polymorfierne og rygning. Vi fandt enkelte genvariationer, hvor der var en risikoforskel for rygere og ikke rygere. Eksempelvis fandt vi en genvariation kodende for manglende aktivitet af et enzym (GSTM1), der forstærkede den beskyttende effekt af rygning på udvikling af colitis ulcerosa.

CARD15 variationer er altså ikke særligt udbredte i Danmark, men de prædisponerer til udvikling af morbus Crohn. Generelt set kunne vi konkludere, at genetiske polymorfier i xenobiotika metaboliserende enzymer ikke ser ud til at spille en afgørende rolle for udvikling af kronisk inflammatorisk tarmsygdom. Enzymerne er vigtige i omsætningen af medikamenter brugt til behandling af kronisk inflammatorisk tarmsygdomme. Det kan betyde at bestemmelse af genetiske polymorfier i xenobiotika metaboliserende enzymer er relevant i forbindelse med medicinsk behandling af sygdommene og fremtidige studier er planlagt for at afdække dette.

REFERENCES

1. www.ccfa.org. 2010.

Ref Type: Internet Communication

2. Logan I, Bowlus CL. The geoeidemiology of autoimmune intestinal diseases. *Autoimmun Rev* 2010;9:A372-A378.
3. Economou M, Pappas G. New global map of Crohn's disease: Genetic, environmental, and socioeconomic correlations. *Inflamm Bowel Dis* 2008;14:709-20.
4. Vind I, Riis L, Jess T et al. Increasing incidences of inflammatory bowel disease and decreasing surgery rates in Copenhagen City and County, 2003-2005: a population-based study from the Danish Crohn colitis database. *Am J Gastroenterol* 2006;101:1274-82.
5. Jacobsen BA, Fallingborg J, Rasmussen HH et al. Increase in incidence and prevalence of inflammatory bowel disease in northern Denmark: a population-based study, 1978-2002. *Eur J Gastroenterol Hepatol* 2006;18:601-6.
6. Lichtenstein GR, Hanauer SB, Sandborn WJ. Management of Crohn's disease in adults. *Am J Gastroenterol* 2009;104:465-83.
7. Kornbluth A, Sachar DB. Ulcerative colitis practice guidelines in adults: American College Of Gastroenterology, Practice Parameters Committee. *Am J Gastroenterol* 2010;105:501-23.

8. Xie J, Itzkowitz SH. Cancer in inflammatory bowel disease. *World J Gastroenterol* 2008;14:378-89.
9. Finishing the euchromatic sequence of the human genome *Nature* 2004;431:931-45.
10. A haplotype map of the human genome *Nature* 2005;437:1299-320.
11. Becker KG. The common variants/multiple disease hypothesis of common complex genetic disorders. *Med Hypotheses* 2004;62:309-17.
12. Bodmer W, Bonilla C. Common and rare variants in multifactorial susceptibility to common diseases. *Nat Genet* 2008;40:695-701.
13. Schork NJ, Murray SS, Frazer KA, Topol EJ. Common vs. rare allele hypotheses for complex diseases. *Curr Opin Genet Dev* 2009;19:212-19.
14. Halfvarson J, Bodin L, Tysk C, Lindberg E, Järnerot G. Inflammatory bowel disease in a Swedish twin cohort: a long-term follow-up of concordance and clinical characteristics. *Gastroenterology* 2003;124:1767-73.
15. Jess T, Riis L, Jespersgaard C et al. Disease concordance, zygosity, and NOD2/CARD15 status: follow-up of a population-based cohort of Danish twins with inflammatory bowel disease. *Am J Gastroenterol* 2005;100:2486-92.

16. Orholm M, Binder V, Sorensen TI, Rasmussen LP, Kyvik KO. Concordance of inflammatory bowel disease among Danish twins. Results of a nationwide study. *Scand J Gastroenterol* 2000;35:1075-81.
17. Spehlmann ME, Begun AZ, Burghardt J, Lepage P, Raedler A, Schreiber S. Epidemiology of inflammatory bowel disease in a German twin cohort: results of a nationwide study. *Inflamm Bowel Dis* 2008;14:968-76.
18. Halme L, Paavola-Sakki P, Turunen U, Lappalainen M, Farkkila M, Kontula K. Family and twin studies in inflammatory bowel disease. *World J Gastroenterol* 2006;12:3668-72.
19. Franke A, McGovern DP, Barrett JC et al. Genome-wide meta-analysis increases to 71 the number of confirmed Crohn's disease susceptibility loci. *Nat Genet* 2010;42:1118-25.
20. Latella G, Fiocchi C, Caprili R. News from the "5th International Meeting on Inflammatory Bowel Diseases" CAPRI 2010. *J Crohns Colitis* 2010;4:690-702.
21. McGovern DP, Gardet A, Torkvist L et al. Genome-wide association identifies multiple ulcerative colitis susceptibility loci. *Nat Genet* 2010;42:332-37.
22. Jung C, Hugot JP. Inflammatory Bowel Diseases: the genetic revolution. *Gastroenterol Clin Biol* 2009;33 Suppl 3:S123-S130.
23. Thompson AI, Lees CW. Genetics of ulcerative colitis. *Inflamm Bowel Dis* 2010.

24. Xavier RJ, Podolsky DK. Unravelling the pathogenesis of inflammatory bowel disease. *Nature* 2007;448:427-34.
25. Sarra M, Pallone F, Macdonald TT, Monteleone G. IL-23/IL-17 axis in IBD. *Inflamm Bowel Dis* 2010;16:1808-13.
26. Zhang H, Massey D, Tremelling M, Parkes M. Genetics of inflammatory bowel disease: clues to pathogenesis. *Br Med Bull* 2008;87:17-30.
27. Hampe J, Franke A, Rosenstiel P et al. A genome-wide association scan of nonsynonymous SNPs identifies a susceptibility variant for Crohn disease in ATG16L1. *Nat Genet* 2007;39:207-11.
28. Noomen CG, Hommes DW, Fidler HH. Update on genetics in inflammatory disease. *Best Pract Res Clin Gastroenterol* 2009;23:233-43.
29. Homer CR, Richmond AL, Rebert NA, Achkar JP, McDonald C. ATG16L1 and NOD2 interact in an autophagy-dependent antibacterial pathway implicated in Crohn's disease pathogenesis. *Gastroenterology* 2010;139:1630-41, 1641.
30. Lecat A, Piette J, Legrand-Poels S. The protein Nod2: an innate receptor more complex than previously assumed. *Biochem Pharmacol* 2010;80:2021-31.
31. Billmann-Born S, Lipinski S, Bock J, Till A, Rosenstiel P, Schreiber S. The complex interplay of NOD-like receptors and the autophagy machinery in the pathophysiology of Crohn disease. *Eur J Cell Biol* 2010.

32. Fukata M, Abreu MT. What are toll-like receptors and what role may they have in IBD? *Inflamm Bowel Dis* 2008;14 Suppl 2:S90-S92.
33. Lavelle EC, Murphy C, O'Neill LA, Creagh EM. The role of TLRs, NLRs, and RLRs in mucosal innate immunity and homeostasis. *Mucosal Immunol* 2010;3:17-28.
34. van Lierop PP, Samsom JN, Escher JC, Nieuwenhuis EE. Role of the innate immune system in the pathogenesis of inflammatory bowel disease. *J Pediatr Gastroenterol Nutr* 2009;48:142-51.
35. Kumagai Y, Akira S. Identification and functions of pattern-recognition receptors. *J Allergy Clin Immunol* 2010;125:985-92.
36. Shen X, Shi R, Zhang H, Li K, Zhao Y, Zhang R. The Toll-like receptor 4 D299G and T399I polymorphisms are associated with Crohn's disease and ulcerative colitis: a meta-analysis. *Digestion* 2010;81:69-77.
37. Doyle SL, O'Neill LA. Toll-like receptors: from the discovery of NFkappaB to new insights into transcriptional regulations in innate immunity. *Biochem Pharmacol* 2006;72:1102-13.
38. Levin A, Shibolet O. Toll-like receptors in inflammatory bowel disease-stepping into uncharted territory. *World J Gastroenterol* 2008;14:5149-53.
39. Rosenstiel P, Till A, Schreiber S. NOD-like receptors and human diseases. *Microbes Infect* 2007;9:648-57.

40. Elphick DA, Mahida YR. Paneth cells: their role in innate immunity and inflammatory disease. *Gut* 2005;54:1802-9.
41. Vignal C, Singer E, Peyrin-Biroulet L, Desreumaux P, Chamaillard M. How NOD2 mutations predispose to Crohn's disease? *Microbes Infect* 2007;9:658-63.
42. Le Bourhis L, Benko S, Girardin SE. Nod1 and Nod2 in innate immunity and human inflammatory disorders. *Biochem Soc Trans* 2007;35:1479-84.
43. Hugot JP, Chamaillard M, Zouali H et al. Association of NOD2 leucine-rich repeat variants with susceptibility to Crohn's disease. *Nature* 2001;411:599-603.
44. Ogura Y, Bonen DK, Inohara N et al. A frameshift mutation in NOD2 associated with susceptibility to Crohn's disease. *Nature* 2001;411:603-6.
45. King K, Sheikh MF, Cuthbert AP et al. Mutation, selection, and evolution of the Crohn disease susceptibility gene CARD15. *Hum Mutat* 2006;27:44-54.
46. Lesage S, Zouali H, Cezard JP et al. CARD15/NOD2 mutational analysis and genotype-phenotype correlation in 612 patients with inflammatory bowel disease. *Am J Hum Genet* 2002;70:845-57.
47. Gasche C, Grundtner P. Genotypes and phenotypes in Crohn's disease: do they help in clinical management? *Gut* 2005;54:162-67.
48. Schreiber S. Slipping the barrier: how variants in CARD15 could alter permeability of the intestinal wall and population health. *Gut* 2006;55:308-9.

49. Hugot JP, Zaccaria I, Cavanaugh J et al. Prevalence of CARD15/NOD2 mutations in Caucasian healthy people. *Am J Gastroenterol* 2007;102:1259-67.
50. Thia KT, Loftus EV, Jr., Sandborn WJ, Yang SK. An update on the epidemiology of inflammatory bowel disease in Asia. *Am J Gastroenterol* 2008;103:3167-82.
51. Gaya DR, Russell RK, Nimmo ER, Satsangi J. New genes in inflammatory bowel disease: lessons for complex diseases? *Lancet* 2006;367:1271-84.
52. Gasche C, Nemeth M, Grundtner P, Willheim-Polli C, Ferenci P, Schwarzenbacher R. Evolution of Crohn's disease-associated Nod2 mutations. *Immunogenetics* 2008;60:115-20.
53. Krishnan A, Korzenik JR. Inflammatory bowel disease and environmental influences. *Gastroenterol Clin North Am* 2002;31:21-39.
54. Danese S, Sans M, Fiocchi C. Inflammatory bowel disease: the role of environmental factors. *Autoimmun Rev* 2004;3:394-400.
55. El Tawil AM. Smoking and inflammatory bowel diseases: what in smoking alters the course? *Int J Colorectal Dis* 2010;25:671-80.
56. Carbonnel F, Jantchou P, Monnet E, Cosnes J. Environmental risk factors in Crohn's disease and ulcerative colitis: an update. *Gastroenterol Clin Biol* 2009;33 Suppl 3:S145-S157.

57. Baumgart DC, Carding SR. Inflammatory bowel disease: cause and immunobiology. *Lancet* 2007;369:1627-40.
58. Brant SR, Picco MF, Achkar JP et al. Defining complex contributions of NOD2/CARD15 gene mutations, age at onset, and tobacco use on Crohn's disease phenotypes. *Inflamm Bowel Dis* 2003;9:281-89.
59. Halfvarson J, Jess T, Magnuson A et al. Environmental factors in inflammatory bowel disease: a co-twin control study of a Swedish-Danish twin population. *Inflamm Bowel Dis* 2006;12:925-33.
60. van der HF, Nolte IM, Kleibeuker JH, Wijmenga C, Dijkstra G, Weersma RK. Differences in genetic background between active smokers, passive smokers, and non-smokers with Crohn's disease. *Am J Gastroenterol* 2010;105:1165-72.
61. Liska D, Lyon M, Jones DS. Detoxification and biotransformational imbalances. *Explore (NY)* 2006;2:122-40.
62. Dekant W. The role of biotransformation and bioactivation in toxicity. *EXS* 2009;99:57-86.
63. Liska DJ. The detoxification enzyme systems. *Altern Med Rev* 1998;3:187-98.
64. Groschwitz KR, Hogan SP. Intestinal barrier function: molecular regulation and disease pathogenesis. *J Allergy Clin Immunol* 2009;124:3-20.

65. Meddings J. What role does intestinal permeability have in IBD pathogenesis? *Inflamm Bowel Dis* 2008;14 Suppl 2:S138-S139.
66. Buhner S, Buning C, Genschel J et al. Genetic basis for increased intestinal permeability in families with Crohn's disease: role of CARD15 3020insC mutation? *Gut* 2006;55:342-47.
67. McGuckin MA, Eri R, Simms LA, Florin TH, Radford-Smith G. Intestinal barrier dysfunction in inflammatory bowel diseases. *Inflamm Bowel Dis* 2009;15:100-113.
68. Shen L, Su L, Turner JR. Mechanisms and functional implications of intestinal barrier defects. *Dig Dis* 2009;27:443-49.
69. Xu C, Li CY, Kong AN. Induction of phase I, II and III drug metabolism/transport by xenobiotics. *Arch Pharm Res* 2005;28:249-68.
70. Schinkel AH, Jonker JW. Mammalian drug efflux transporters of the ATP binding cassette (ABC) family: an overview. *Adv Drug Deliv Rev* 2003;55:3-29.
71. Leslie EM, Deeley RG, Cole SP. Multidrug resistance proteins: role of P-glycoprotein, MRP1, MRP2, and BCRP (ABCG2) in tissue defense. *Toxicol Appl Pharmacol* 2005;204:216-37.
72. Ostergaard M, Ernst A, Labouriau R et al. Cyclooxygenase-2, multidrug resistance 1, and breast cancer resistance protein gene polymorphisms and inflammatory bowel disease in the Danish population. *Scand J Gastroenterol* 2009;44:65-73.

73. Bolt HM, Thier R. Relevance of the deletion polymorphisms of the glutathione S-transferases GSTT1 and GSTM1 in pharmacology and toxicology. *Curr Drug Metab* 2006;7:613-28.
74. Hayes JD, Pulford DJ. The glutathione S-transferase supergene family: regulation of GST and the contribution of the isoenzymes to cancer chemoprotection and drug resistance. *Crit Rev Biochem Mol Biol* 1995;30:445-600.
75. Hayes JD, Strange RC. Potential contribution of the glutathione S-transferase supergene family to resistance to oxidative stress. *Free Radic Res* 1995;22:193-207.
76. Salinas AE, Wong MG. Glutathione S-transferases--a review. *Curr Med Chem* 1999;6:279-309.
77. Strange RC, Spiteri MA, Ramachandran S, Fryer AA. Glutathione-S-transferase family of enzymes. *Mutat Res* 2001;482:21-26.
78. Hayek T, Stephens JW, Hubbart CS et al. A common variant in the glutathione S transferase gene is associated with elevated markers of inflammation and lipid peroxidation in subjects with diabetes mellitus. *Atherosclerosis* 2006;184:404-12.
79. Hassett C, Aicher L, Sidhu JS, Omiecinski CJ. Human microsomal epoxide hydrolase: genetic polymorphism and functional expression in vitro of amino acid variants. *Hum Mol Genet* 1994;3:421-28.

80. Omiecinski CJ, Hassett C, Hosagrahara V. Epoxide hydrolase--polymorphism and role in toxicology. *Toxicol Lett* 2000;112-113:365-70.
81. Fretland AJ, Omiecinski CJ. Epoxide hydrolases: biochemistry and molecular biology. *Chem Biol Interact* 2000;129:41-59.
82. Decker M, Arand M, Cronin A. Mammalian epoxide hydrolases in xenobiotic metabolism and signalling. *Arch Toxicol* 2009;83:297-318.
83. Wormhoudt LW, Commandeur JN, Vermeulen NP. Genetic polymorphisms of human N-acetyltransferase, cytochrome P450, glutathione-S-transferase, and epoxide hydrolase enzymes: relevance to xenobiotic metabolism and toxicity. *Crit Rev Toxicol* 1999;29:59-124.
84. Kiyohara C, Washio M, Horiuchi T et al. Cigarette smoking, N-acetyltransferase 2 polymorphisms and systemic lupus erythematosus in a Japanese population. *Lupus* 2009;18:630-638.
85. Yalin S, Hatungil R, Tamer L et al. N-acetyltransferase 2 polymorphism in patients with diabetes mellitus. *Cell Biochem Funct* 2007;25:407-11.
86. Pawlik A, Ostanek L, Brzosko I, Gawroska-Szklarz B, Brzosko M, Dabrowska-Zamojcin E. Increased genotype frequency of N-acetyltransferase 2 slow acetylation in patients with rheumatoid arthritis. *Clin Pharmacol Ther* 2002;72:319-25.

87. Machida H, Tsukamoto K, Wen CY et al. Crohn's disease in Japanese is associated with a SNP-haplotype of N-acetyltransferase 2 gene. *World J Gastroenterol* 2005;11:4833-37.
88. Albermann N, Schmitz-Winnenthal FH, Z'graggen K et al. Expression of the drug transporters MDR1/ABCB1, MRP1/ABCC1, MRP2/ABCC2, BCRP/ABCG2, and PXR in peripheral blood mononuclear cells and their relationship with the expression in intestine and liver. *Biochem Pharmacol* 2005;70:949-58.
89. Gutmann H, Hruz P, Zimmermann C et al. Breast cancer resistance protein and P-glycoprotein expression in patients with newly diagnosed and therapy-refractory ulcerative colitis compared with healthy controls. *Digestion* 2008;78:154-62.
90. Englund G, Jacobson A, Rorsman F, Artursson P, Kindmark A, Ronnblom A. Efflux transporters in ulcerative colitis: decreased expression of BCRP (ABCG2) and Pgp (ABCB1). *Inflamm Bowel Dis* 2007;13:291-97.
91. Langmann T, Moehle C, Mauerer R et al. Loss of detoxification in inflammatory bowel disease: dysregulation of pregnane X receptor target genes. *Gastroenterology* 2004;127:26-40.
92. Ardizzone S, Maconi G, Bianchi V et al. Multidrug resistance 1 gene polymorphism and susceptibility to inflammatory bowel disease. *Inflamm Bowel Dis* 2007;13:516-23.
93. Urcelay E, Mendoza JL, Martin MC et al. MDR1 gene: susceptibility in Spanish Crohn's disease and ulcerative colitis patients. *Inflamm Bowel Dis* 2006;12:33-37.

94. Ho GT, Soranzo N, Nimmo ER, Tenesa A, Goldstein DB, Satsangi J. ABCB1/MDR1 gene determines susceptibility and phenotype in ulcerative colitis: discrimination of critical variants using a gene-wide haplotype tagging approach. *Hum Mol Genet* 2006;15:797-805.
95. Fischer S, Lakatos PL, Lakatos L et al. ATP-binding cassette transporter ABCG2 (BCRP) and ABCB1 (MDR1) variants are not associated with disease susceptibility, disease phenotype response to medical therapy or need for surgery in Hungarian patients with inflammatory bowel diseases. *Scand J Gastroenterol* 2007;42:726-33.
96. Abraham C, Cho JH. Inflammatory bowel disease. *N Engl J Med* 2009;361:2066-78.
97. Arrieta MC, Bistritz L, Meddings JB. Alterations in intestinal permeability. *Gut* 2006;55:1512-20.
98. Karp SM, Koch TR. Oxidative stress and antioxidants in inflammatory bowel disease. *Dis Mon* 2006;52:199-207.
99. Rezaie A, Parker RD, Abdollahi M. Oxidative stress and pathogenesis of inflammatory bowel disease: an epiphenomenon or the cause? *Dig Dis Sci* 2007;52:2015-21.
100. Binder V, Both H, Hansen PK, Hendriksen C, Kreiner S, Torp-Pedersen K. Incidence and prevalence of ulcerative colitis and Crohn's disease in the County of Copenhagen, 1962 to 1978. *Gastroenterology* 1982;83:563-68.

101. Xu S, Wang Y, Roe B, Pearson WR. Characterization of the human class Mu glutathione S-transferase gene cluster and the GSTM1 deletion. *J Biol Chem* 1998;273:3517-27.
102. Brasch-Andersen C, Christiansen L, Tan Q, Haagerup A, Vestbo J, Kruse TA. Possible gene dosage effect of glutathione-S-transferases on atopic asthma: using real-time PCR for quantification of GSTM1 and GSTT1 gene copy numbers. *Hum Mutat* 2004;24:208-14.
103. Girault I, Lidereau R, Bieche I. Trimodal GSTT1 and GSTM1 genotyping assay by real-time PCR. *Int J Biol Markers* 2005;20:81-86.
104. Norkov MS, Frikke-Schmidt R, Loft S, Tybjaerg-Hansen A. High-throughput genotyping of copy number variation in glutathione S-transferases M1 and T1 using real-time PCR in 20,687 individuals. *Clin Biochem* 2009;42:201-9.
105. Eklund BI, Moberg M, Bergquist J, Mannervik B. Divergent activities of human glutathione transferases in the bioactivation of azathioprine. *Mol Pharmacol* 2006;70:747-54.
106. Stocco G, Martelossi S, Barabino A et al. Glutathione-S-transferase genotypes and the adverse effects of azathioprine in young patients with inflammatory bowel disease. *Inflamm Bowel Dis* 2007;13:57-64.
107. Schouten JP, McElgunn CJ, Waaijer R, Zwijnenburg D, Diepvens F, Pals G. Relative quantification of 40 nucleic acid sequences by multiplex ligation-dependent probe amplification. *Nucleic Acids Res* 2002;30:e57.

108. de Jong DJ, van der Logt EM, van Schaik A, Roelofs HM, Peters WH, Naber TH. Genetic polymorphisms in biotransformation enzymes in Crohn's disease: association with microsomal epoxide hydrolase. *Gut* 2003;52:547-51.
109. Cuthbert AP, Fisher SA, Lewis CM, Mathew CG, Sanderson J, Forbes A. Genetic association between EPHX1 and Crohn's disease: population stratification, genotyping error, or random chance? *Gut* 2004;53:1386.
110. Peters WH, van der Logt EM, Te Morsche RH, Roelofs HM, de Jong DJ, Naber TH. No genetic association between EPHX1 and Crohn's disease. *Gut* 2005;54:1659-60.
111. Kuznetsov IB, McDuffie M, Moslehi R. A web server for inferring the human N-acetyltransferase-2 (NAT2) enzymatic phenotype from NAT2 genotype. *Bioinformatics* 2009;25:1185-86.
112. Sabbagh A, Darlu P, Vidaud M. Evaluating NAT2PRED for inferring the individual acetylation status from unphased genotype data. *BMC Med Genet* 2009;10:148.
113. Hein DW. N-acetyltransferase 2 genetic polymorphism: effects of carcinogen and haplotype on urinary bladder cancer risk. *Oncogene* 2006;25:1649-58.
114. Mahid SS, Minor KS, Soto RE, Hornung CA, Galandiuk S. Smoking and inflammatory bowel disease: a meta-analysis. *Mayo Clin Proc* 2006;81:1462-71.
115. Yazdanyar S, Weischer M, Nordestgaard BG. Genotyping for NOD2 genetic variants and crohn disease: a metaanalysis. *Clin Chem* 2009;55:1950-1957.

116. Yazdanyar S, Nordestgaard BG. NOD2/CARD15 genotype and common gastrointestinal diseases in 43,600 individuals. *J Intern Med* 2010;267:228-36.
117. Ahmad T, Armuzzi A, Bunce M et al. The molecular classification of the clinical manifestations of Crohn's disease. *Gastroenterology* 2002;122:854-66.
118. Annese V, Lombardi G, Perri F et al. Variants of CARD15 are associated with an aggressive clinical course of Crohn's disease--an IG-IBD study. *Am J Gastroenterol* 2005;100:84-92.
119. Cuthbert AP, Fisher SA, Mirza MM et al. The contribution of NOD2 gene mutations to the risk and site of disease in inflammatory bowel disease. *Gastroenterology* 2002;122:867-74.
120. Hampe J, Grebe J, Nikolaus S et al. Association of NOD2 (CARD 15) genotype with clinical course of Crohn's disease: a cohort study. *Lancet* 2002;359:1661-65.
121. Duncan H, Swan C, Green J et al. Susceptibility to ulcerative colitis and Crohn's disease: interactions between glutathione S-transferase GSTM1 and GSTT1 genotypes. *Clin Chim Acta* 1995;240:53-61.
122. Hertervig E, Nilsson A, Seidegard J. The expression of glutathione transferase mu in patients with inflammatory bowel disease. *Scand J Gastroenterol* 1994;29:729-35.
123. Mittal RD, Manchanda PK, Bid HK, Ghoshal UC. Analysis of polymorphisms of tumor necrosis factor-alpha and polymorphic xenobiotic metabolizing enzymes in

inflammatory bowel disease: study from northern India. *J Gastroenterol Hepatol* 2007;22:920-924.

124. Saxena A, Dhillon VS, Raish M et al. Detection and relevance of germline genetic polymorphisms in glutathione S-transferases (GSTs) in breast cancer patients from northern Indian population. *Breast Cancer Res Treat* 2008.
125. Tripathi S, Ghoshal U, Ghoshal UC et al. Gastric carcinogenesis: Possible role of polymorphisms of GSTM1, GSTT1, and GSTP1 genes. *Scand J Gastroenterol* 2008;43:431-39.
126. Garte S, Gaspari L, Alexandrie AK et al. Metabolic gene polymorphism frequencies in control populations. *Cancer Epidemiol Biomarkers Prev* 2001;10:1239-48.
127. Polito JM, Childs B, Mellits ED, Tokayer AZ, Harris ML, Bayless TM. Crohn's disease: influence of age at diagnosis on site and clinical type of disease. *Gastroenterology* 1996;111:580-586.
128. Mahid SS, Colliver DW, Crawford NP et al. Characterization of N-acetyltransferase 1 and 2 polymorphisms and haplotype analysis for inflammatory bowel disease and sporadic colorectal carcinoma. *BMC Med Genet* 2007;8:28.
129. Walker K, Ginsberg G, Hattis D, Johns DO, Guyton KZ, Sonawane B. Genetic polymorphism in N-Acetyltransferase (NAT): Population distribution of NAT1 and NAT2 activity. *J Toxicol Environ Health B Crit Rev* 2009;12:440-472.

130. Nothlings U, Yamamoto JF, Wilkens LR et al. Meat and heterocyclic amine intake, smoking, NAT1 and NAT2 polymorphisms, and colorectal cancer risk in the multiethnic cohort study. *Cancer Epidemiol Biomarkers Prev* 2009;18:2098-106.
131. Golka K, Prior V, Blaszkewicz M, Bolt HM. The enhanced bladder cancer susceptibility of NAT2 slow acetylators towards aromatic amines: a review considering ethnic differences. *Toxicol Lett* 2002;128:229-41.
132. Hayes RB, Bi W, Rothman N et al. N-acetylation phenotype and genotype and risk of bladder cancer in benzidine-exposed workers. *Carcinogenesis* 1993;14:675-78.
133. Onnie CM, Fisher SA, Pattni R et al. Associations of allelic variants of the multidrug resistance gene (ABCB1 or MDR1) and inflammatory bowel disease and their effects on disease behavior: a case-control and meta-analysis study. *Inflamm Bowel Dis* 2006;12:263-71.
134. Annese V, Valvano MR, Palmieri O, Latiano A, Bossa F, Andriulli A. Multidrug resistance 1 gene in inflammatory bowel disease: a meta-analysis. *World J Gastroenterol* 2006;12:3636-44.
135. Ho GT, Gaya DR, Satsangi J. Multidrug resistance (MDR1) gene in inflammatory bowel disease: a key player? *Inflamm Bowel Dis* 2005;11:1013-19.
136. Chen M, Xia B, Chen B et al. N-acetyltransferase 2 slow acetylator genotype associated with adverse effects of sulfasalazine in the treatment of inflammatory bowel disease. *Can J Gastroenterol* 2007;21:155-58.

137. Tanigawara Y, Kita T, Aoyama N et al. N-acetyltransferase 2 genotype-related sulfapyridine acetylation and its adverse events. *Biol Pharm Bull* 2002;25:1058-62.

PAPERS I-III