

**Relative efficiencies of peptidylarginine deiminase 2 and 4 in generating target sites for anti-citrullinated protein antibodies in fibrinogen, alpha-enolase and histone H3**

Damgaard, Dres; Bawadekar, Mandar; Senolt, Ladislav; Stensballe, Allan; Shelef, Miriam A; Nielsen, Claus H

*Published in:*  
PLOS ONE

*DOI (link to publication from Publisher):*  
[10.1371/journal.pone.0203214](https://doi.org/10.1371/journal.pone.0203214)

*Creative Commons License*  
CC0 1.0

*Publication date:*  
2018

*Document Version*  
Publisher's PDF, also known as Version of record

[Link to publication from Aalborg University](#)

*Citation for published version (APA):*

Damgaard, D., Bawadekar, M., Senolt, L., Stensballe, A., Shelef, M. A., & Nielsen, C. H. (2018). Relative efficiencies of peptidylarginine deiminase 2 and 4 in generating target sites for anti-citrullinated protein antibodies in fibrinogen, alpha-enolase and histone H3. *PLOS ONE*, 13(8), Article e0203214. <https://doi.org/10.1371/journal.pone.0203214>

**General rights**

Copyright and moral rights for the publications made accessible in the public portal are retained by the authors and/or other copyright owners and it is a condition of accessing publications that users recognise and abide by the legal requirements associated with these rights.

- Users may download and print one copy of any publication from the public portal for the purpose of private study or research.
- You may not further distribute the material or use it for any profit-making activity or commercial gain
- You may freely distribute the URL identifying the publication in the public portal -

**Take down policy**

If you believe that this document breaches copyright please contact us at [vbn@aub.aau.dk](mailto:vbn@aub.aau.dk) providing details, and we will remove access to the work immediately and investigate your claim.



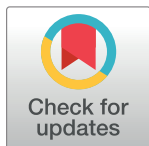
RESEARCH ARTICLE

# Relative efficiencies of peptidylarginine deiminase 2 and 4 in generating target sites for anti-citrullinated protein antibodies in fibrinogen, alpha-enolase and histone H3

Dres Damgaard<sup>1,2\*</sup>, Mandar Bawadekar<sup>3</sup>, Ladislav Senolt<sup>4</sup>, Allan Stensballe<sup>5</sup>, Miriam A. Shelef<sup>3,6</sup>, Claus H. Nielsen<sup>1,2</sup>

**1** Institute for Inflammation Research, Center for Rheumatology and Spine Diseases, Copenhagen University Hospital, Rigshospitalet, Copenhagen, Denmark, **2** Section for Periodontology, Microbiology and Community Dentistry, Department of Odontology, Faculty of Health and Medical Sciences, University of Copenhagen, Copenhagen, Denmark, **3** Department of Medicine, University of Wisconsin, Madison, Wisconsin, United States of America, **4** Institute of Rheumatology and Department of Rheumatology, 1st Faculty of Medicine, Charles University, Prague, Czech Republic, **5** Department of Health Science and Technology, Aalborg University, Aalborg, Denmark, **6** William S. Middleton Memorial Veterans Hospital, Madison, Wisconsin, United States of America

\* [dres.damgaard@regionh.dk](mailto:dres.damgaard@regionh.dk)



## OPEN ACCESS

**Citation:** Damgaard D, Bawadekar M, Senolt L, Stensballe A, Shelef MA, Nielsen CH (2018) Relative efficiencies of peptidylarginine deiminase 2 and 4 in generating target sites for anti-citrullinated protein antibodies in fibrinogen, alpha-enolase and histone H3. PLoS ONE 13(8): e0203214. <https://doi.org/10.1371/journal.pone.0203214>

**Editor:** Salvatore V Pizzo, Duke University School of Medicine, UNITED STATES

**Received:** February 21, 2018

**Accepted:** August 16, 2018

**Published:** August 30, 2018

**Copyright:** This is an open access article, free of all copyright, and may be freely reproduced, distributed, transmitted, modified, built upon, or otherwise used by anyone for any lawful purpose. The work is made available under the [Creative Commons CC0](https://creativecommons.org/licenses/by/4.0/) public domain dedication.

**Data Availability Statement:** All relevant data are within the paper.

**Funding:** LS was supported by a project of the MHCR for conceptual research development No. 023728. This work was also supported by the National Institute of Health (NIH) K08 AR065500 to MAS.

**Competing interests:** The authors have declared that no competing interests exist.

## Abstract

### Objective

Peptidylarginine deiminase 2 (PAD2) and PAD4 are expressed in the synovium of rheumatoid arthritis (RA) patients and catalyze citrullination of arginine residues in proteins targeted by anti-citrullinated protein antibodies (ACPAs). Little is known about the relative importance of PAD2 and PAD4 in generating citrullinated self-antigens. Here we investigate the ability of PAD2 and PAD4 to generate citrullinated targets for ACPAs in four human proteins.

### Methods

Synovial fluid (SF) and plasma were collected from 42 RA patients. Human fibrinogen, human alpha-enolase (ENO1), human histone H3, and human serum albumin (HSA) were citrullinated *in vitro* by PAD2 or PAD4. The total degree of citrullination was determined using the anti-modified citrulline approach. Antibody binding to native and citrullinated proteins was measured by ELISA.

### Results

ACPAs within pooled SF from multiple RA patients reacted equally well with, and cross-reacted with, PAD2- and PAD4-citrullinated fibrinogen. ACPAs from most individual patient SF and plasma samples bound equally well to PAD2- and PAD4-citrullinated fibrinogen or ENO1. When histone H3 was used as target, PAD4 was generally superior in generating epitopes recognized by ACPAs. No binding to citrullinated HSA was observed.

**Abbreviations:** PAD, peptidylarginine deiminase; ACPA, anti-citrullinated protein antibody; RA, rheumatoid arthritis; CCP, cyclic citrullinated peptide; ENO1, alpha.enolase; HSA, human serum albumin.

## Conclusion

In most patients, PAD2 and PAD4 are equally efficient in generating citrullinated target sites for ACPAs in fibrinogen and ENO1. The binding of autoantibodies to histone H3 was generally higher after citrullination with PAD4 than with PAD2. Citrullinated HSA is not a target for ACPAs.

## Background

Production of anti-citrullinated protein antibodies (ACPAs) characterizes a subgroup comprising around 70% of patients with rheumatoid arthritis (RA) [1–3]. In this subset, disease is strongly associated with HLA-DRB1 molecules containing a shared amino acid composition (shared epitope) in the peptide binding groove [3,4]. With a relatively poor prognosis, more erosive disease, and association with environmental factors such as smoking, ACPA-positive RA differs from ACPA-negative RA [4–8]. ACPA-positive RA is usually diagnosed as a positive antibody reaction with a synthetic cyclic citrullinated peptide (CCP), the anti-CCP test. ACPAs are highly specific for RA, even though the presence of citrullinated proteins in the synovium also occurs in other inflammatory diseases [9].

Citrullination (deimination) refers to the posttranslational conversion of peptidylarginine into peptidylcitrulline as catalyzed by peptidylarginine deiminases (PADs), of which five isoforms exist [10]. PAD2 and PAD4 are expressed in RA synovium and their presence correlates with inflammatory markers [11–13]. Among the best described PAD substrates is fibrinogen, which is present in the synovium of RA patients [14–18] together with numerous other citrullinated self-antigens including vimentin, alpha-enolase (ENO1), collagen type II and histones, all of which have proposed pathogenic relevance [19–24]. PAD2 seems less restricted by the amino acid composition surrounding the acceptor arginine residue than PAD4 [25]. According to some investigators, PAD2 citrullinates more arginine residues in fibrinogen than PAD4 [26], while others have reported that the two PAD isoforms citrullinate a similar number of sites [27]. The two isoforms show similar dependency on calcium [27,28], reducing conditions [29,30] and pH [27], and their cellular expression and function varies between different leukocyte populations [31–33]. It is unclear if either isoform dominates in the generation of citrullinated self-protein sites targeted by ACPAs. A recent study of 12 ACPA-positive RA patients showed that in highly diluted serum, higher ACPA reactivity was found against fibrinogen citrullinated by PAD4 than against fibrinogen citrullinated by PAD2 [34].

Isolated ACPAs react with citrullinated sites on multiple proteins [35,36], but non-overlapping reactivities have also been demonstrated [35]. Several studies have examined the fine specificity of ACPAs using citrullinated peptides, including some derived from fibrinogen, ENO1, collagen type II and pro-filaggrin, and ACPAs from some individuals bind to several sites whereas others react with only a single site [21,36,37]. PAD2-specific and PAD4-specific inhibitors are currently under development for therapeutic use, and studies providing a better understanding of their relative efficiency in generating citrullinated autoantigens are warranted.

In this study, we aimed to determine the relative contributions by PAD2 and PAD4 to the generation of antigenic determinants in full-length proteins targeted by ACPAs. To this end, we examined the binding of autoantibodies from RA synovial fluid (SF) and plasma from 42 patients to *in vitro* citrullinated fibrinogen, ENO1, histone H3 and human serum albumin (HSA), as well as to the native proteins.

## Methods

### Plasma and synovial fluid from RA patients

SF samples were obtained during knee joint aspiration from 10 anti-CCP-negative (median anti-CCP: 3.6 U/ml [interquartile range: 2–11.4 U/ml]) and 32 anti-CCP-positive (878 U/ml; [136–1353] U/ml) RA patients fulfilling the American College of Rheumatology criteria [38] and characterised with respect to disease-activity, as assessed by DAS28. The majority of the SF samples were also used in a recent study [12]. All SF samples were centrifuged at 1900 g for 10 min to remove cells and debris and stored at -80°C until use. Plasma from all patients but four was isolated from peripheral venous blood from the same patients at the time of arthrocentesis. The study was approved by the local ethics committee of the Institute of Rheumatology in Prague (No. 3294/2012), Czech Republic, and written informed consent was obtained from all patients.

Serum anti-CCP antibodies and IgM-rheumatoid factor were determined by standard ELISA kits (TestLine Clinical Diagnostics, Brunn, Czech Republic). Serum CRP was measured using an immuno-turbidimetric technique with an Olympus biochemical analyser, model AU 400 (Olympus, Tokyo, Japan) and SF leukocytes were counted using the Iris IQ200 (Beckman Coulter, CA, USA) analyzer.

### In vitro citrullination

Recombinant human PAD2 and PAD4 were obtained from Cayman Chemicals (Michigan, USA). Plasminogen-depleted fibrinogen (Merck Life Science, Hellerup, Denmark) was diluted to 0.5 mg/mL in citrullination buffer (100 mM Tris-HCl, 1 mM DTT, 5 mM CaCl<sub>2</sub>, pH 7.5), and incubated for 3 hours at room temperature (RT) with or without various concentrations of PAD2 or PAD4. ENO1 (Antibodies-online, Aachen, Germany) and histone H3 (Sigma-Aldrich, Copenhagen, Denmark) was diluted to 0.15 mg/mL in citrullination buffer, and HSA (Statens Serum Institute, Copenhagen, Denmark) at 0.5 mg/mL, with or without 2 µg PAD per mg protein.

### ELISA for anti-citrullinated protein antibodies

Citrullinated or non-citrullinated proteins were diluted in coating buffer (30 mM Na<sub>2</sub>CO<sub>3</sub>, 70 mM NaHCO<sub>3</sub>, pH 9.6) and used for coating microtiter plates (Nunc, Roskilde, Denmark) (100 µL/well) overnight at 4°C. Plates were coated with fibrinogen at 5 µg/mL, whereas the other proteins were used at a concentration of 10 µg/mL. To compensate for content of PAD2 or PAD4 in citrullinated samples, the enzymes were added to negative control wells devoid of other proteins. Wells were washed thrice in PBS, 0.05% Tween-20, pH 7.4, and blocked in dilution buffer (PBS, 0.05% Tween-20, 2% bovine serum albumin). Plasma or SF was diluted in dilution buffer, added to the wells, and incubated for 2 hours at room temperature (RT), including a positive control, consisting of a SF pool, used for normalization. For determination of ACPA cross-reactivity, SF was pre-incubated with the citrullinated proteins at 20, 100 and 200 µg/mL for 30 min before addition to the plates. After three washes, wells were incubated with 100 µL horseradish peroxidase (HRP)-conjugated polyclonal rabbit anti-human immunoglobulin G (IgG) antibodies (P0214, Dako, Glostrup, Denmark) diluted 1:1000 in washing buffer for 1 hour. Finally, the plates were washed three times in washing buffer and incubated with 0.4 mg/mL o-phenylene-diamine (OPD; Kem-En-Tec; Taastrup, Denmark) in developing buffer (35 mM citric acid, 65 mM Na<sub>2</sub>PO<sub>4</sub>, pH 5.0). After 10 min, the colour reaction was stopped with 1.0 M H<sub>2</sub>SO<sub>4</sub>, and optical density (OD) was measured at 490–650 nm using the SPECTROstar nano Microplate Reader (BMG Labtech). Data were processed using the MARS

software (BMG Labtech). To determine the specific binding of ACPAs, OD values obtained from coating with native proteins were subtracted from the corresponding values obtained with the citrullinated protein.

## Western blotting

Gel-electrophoresis was performed with NuPAGE 10% Bis-Tris gels (Invitrogen, CA, USA) using the NuPAGE® system (Invitrogen) according to the manufacturer's recommendations. A second gel was stained in parallel with Coomassie Blue. Fibrinogen was loaded at 80 µg/mL in reducing SDS buffer. Proteins were electro-blotted onto pre-activated Immobilon®-FL polyvinylidene difluoride membranes (PVDF; Millipore) by tank-blotting. The membrane was blocked in Odyssey Blocking buffer (LI-COR, Cambridge, UK) for 1 hour under gentle shaking at RT. An SF pool was diluted 1:100 in blocking buffer including 0.2% Tween-20 for 2 hours under gentle shaking at RT. The membrane was washed three times in TBS 0.2% Tween-20 and incubated with rabbit anti-human IgG antibodies (A0424, Dako) for 1 hour gently shaking at RT before another wash cycle. Finally, the membrane was incubated 1:15,000 with IRDye 800CW-conjugated goat anti-rabbit IgG antibody (LI-COR) in blocking buffer including 0.2% Tween-20 for 1 hour under gentle shaking at RT. After a final wash cycle, the membrane was washed in TBS and left for 1 hour in dark to dry. Membrane was imaged using the Odyssey Fc infrared scanner (LI-COR).

Gel electrophoresis, western blotting, and densitometry to detect and quantify total protein using brilliant blue G colloidal solution (Millipore-Sigma, St. Louis, USA) and protein citrullination using the anti-citrulline (modified) detection kit (Millipore-Sigma) were performed as previously described [39].

## Statistics

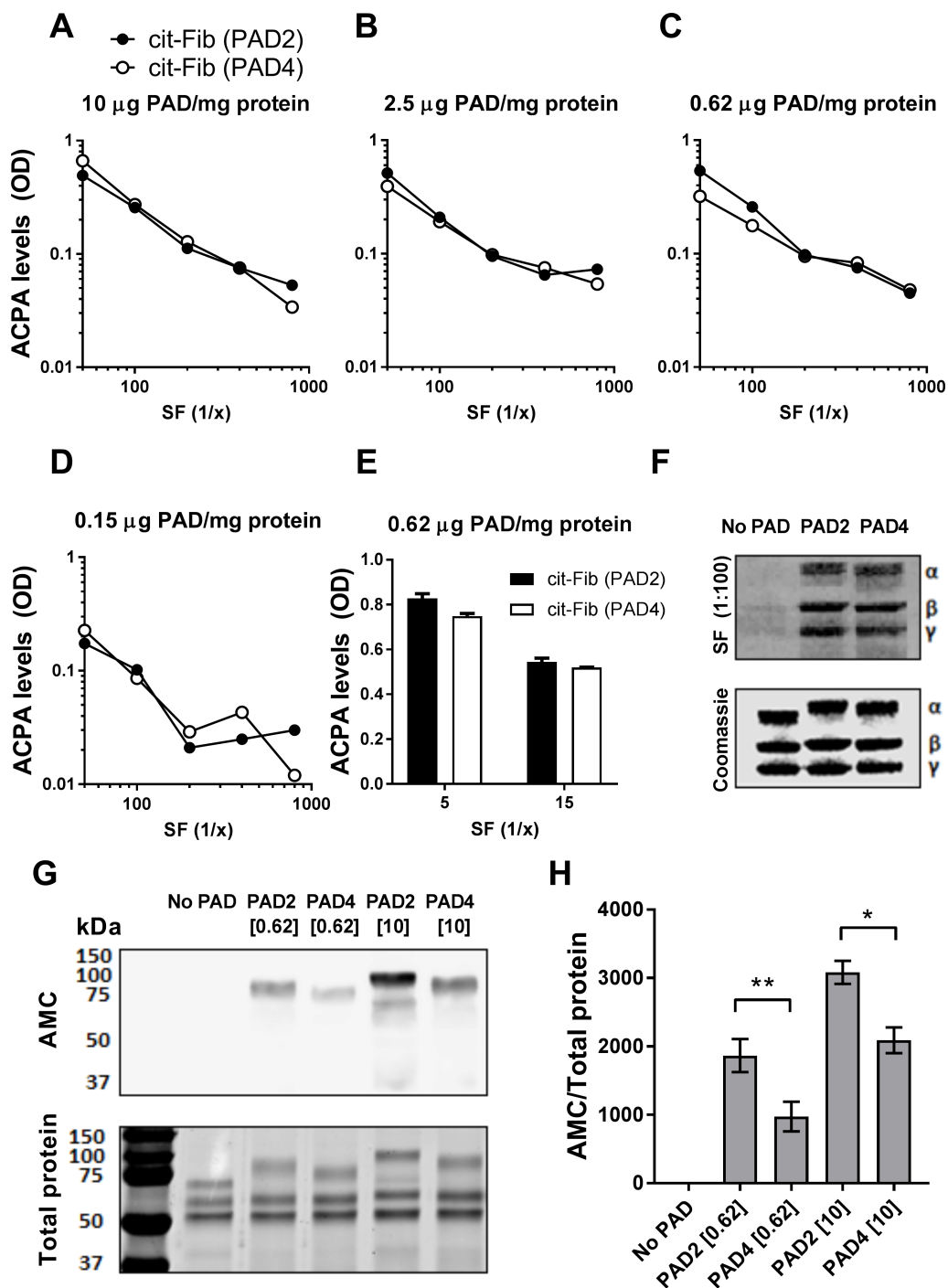
Wilcoxon matched-pairs signed rank test and Spearman's correlation test were determined using GraphPad Prism 7.02 (GraphPad Software, La Jolla, CA, USA). Statistical comparison between PAD2- and PAD4- citrullinated proteins in AMC-blot were made using a paired t-test. P-values < 0.05 were considered statistically significant.

## Results

A direct ELISA was used to examine the binding of ACPAs contained in pooled SF from 6 RA patients to native fibrinogen and fibrinogen citrullinated *in vitro* by PAD2 or PAD4. ACPA binding was expressed as net binding, i.e. subtraction of signals obtained with native fibrinogen from signals obtained with citrullinated fibrinogen (Fig 1). ACPAs bound equally well to PAD2-citrullinated and PAD4-citrullinated fibrinogen, irrespective of the PAD concentration and SF dilution used (Fig 1A–1E). This observation was confirmed by Western blotting, which showed that ACPAs bound to all three chains of fibrinogen (Fig 1F).

The preparations of PAD used in these experiments citrullinated fibrinogen efficiently over a wide range of enzyme:substrate ratios (Fig 1G). When the amount of citrullinated fibrinogen was normalized to total protein (Fig 1H), PAD2 appeared to citrullinate fibrinogen more efficiently than PAD4 (Fig 1H).

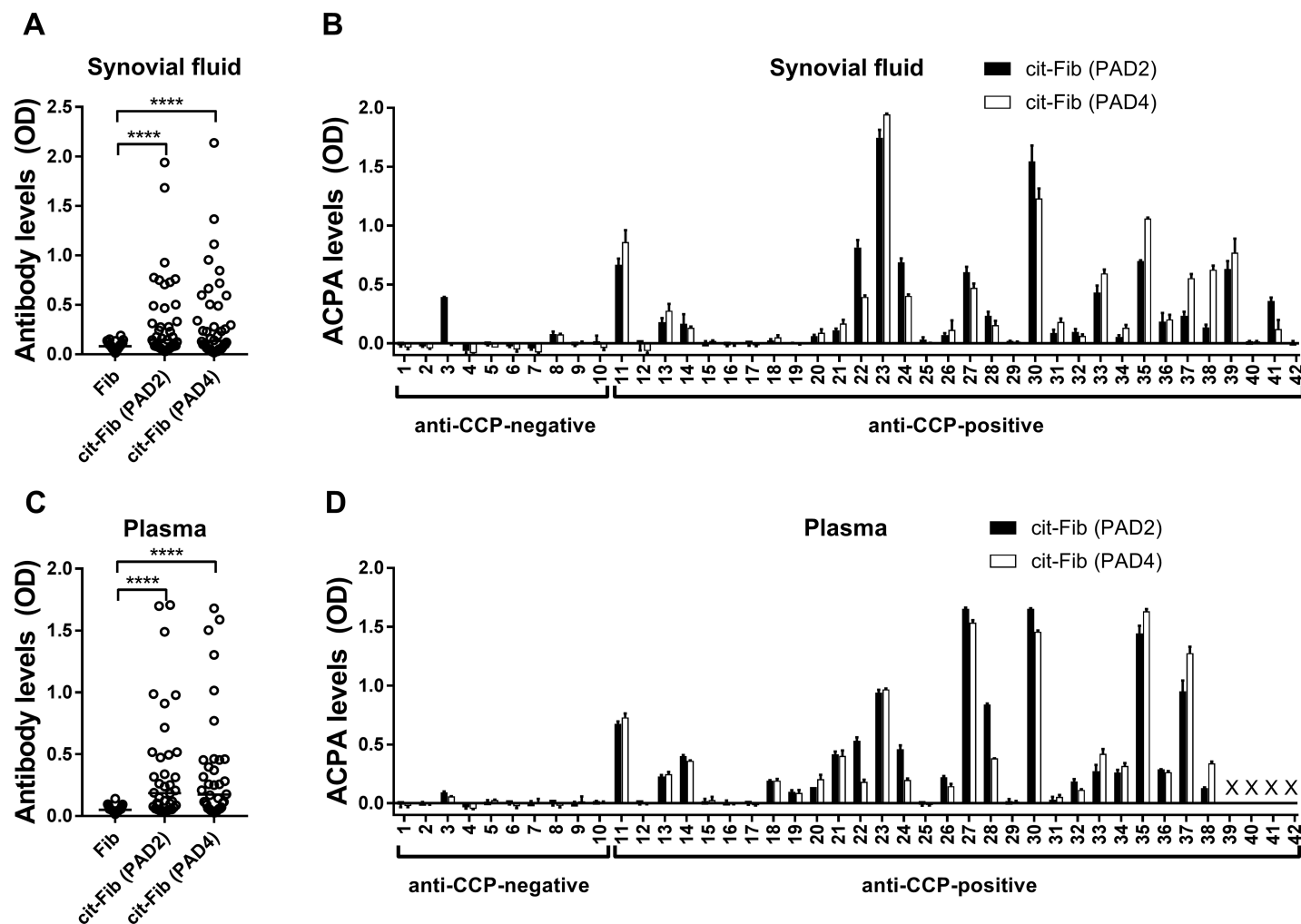
Forty-two SF samples from RA patients were examined individually for autoantibody reactivity against native, PAD2-citrullinated and PAD4-citrullinated fibrinogen (Fig 2A). All samples contained very little reactivity against native fibrinogen and negligible reactivity with PAD2 or PAD4 (S1 Fig). ACPAs from the majority of anti-CCP-positive samples reacted with similar efficiency against PAD2-citrullinated and PAD4-citrullinated fibrinogen (Fig 2B). However, two patients showed more than two-fold higher ACPA-binding to



**Fig 1. ACPA reactivity with PAD2- and PAD4-citrullinated fibrinogen.** (A-D) Microtiter plates were coated with native fibrinogen or fibrinogen citrullinated by either PAD2 or PAD4 (cit-Fib) at various concentrations. Pooled synovial fluid (SF) from 6 anti-CCP-positive RA patients was applied at different dilutions ranging from 1:50 to 1:800, and the binding of ACPAs was detected using HRP-anti-human IgG and OPD substrate. Shown are optical density (OD) values from citrullinated minus native fibrinogen. (E) The pooled SF was also tested in dilutions of 1:5 and 1:15 using fibrinogen citrullinated by 0.62 µg PAD per mg protein. Average and range of duplicate measurements are shown. (F) Western blotting showing the binding of ACPAs from pooled SF (diluted 1:100) to native fibrinogen and fibrinogen citrullinated by PAD2 or PAD4 (0.62 µg PAD per mg protein). Coomassie staining is shown as a loading control. The three bands show α-chain, β-chain and γ-chain of fibrinogen. (G) Anti-modified citrulline (AMC) western blot to detect citrullinated fibrinogen, citrullinated by 0.62 or 10 µg PAD per mg protein, respectively, (top) and brilliant blue stained gel to detect total protein (bottom). (H) The density of the visible citrullinated protein bands in the AMC blot was normalized to corresponding protein signal. Mean and SEM are shown for triplicate blots with \* $p < 0.05$ , \*\* $p < 0.01$ .

<https://doi.org/10.1371/journal.pone.0203214.g001>





**Fig 2. Anti-citrullinated fibrinogen autoantibodies in SF and plasma from individual RA patients.** IgG autoantibodies against native and citrullinated fibrinogen were measured in (A, B) SF (diluted 1:50) and (C, D) plasma (diluted 1:50) from 32 anti-CCP-positive and 10 anti-CCP-negative RA patients using a direct ELISA based on microtiter plates coated with native fibrinogen or fibrinogen citrullinated by either PAD2 or PAD4 (cit-Fib) at 0.62  $\mu$ g PAD per mg protein. Shown are (A, C) raw optical density (OD) values for all patients, and (B, D) net OD values all patients, adjusted for binding to native fibrinogen. Each data point represents duplicate measurements. \*\*\*\* $p$ <0.0001.

<https://doi.org/10.1371/journal.pone.0203214.g002>

PAD2-citrullinated than to PAD4-citrullinated fibrinogen (SF# 22 and 41), while two patients showed the opposite pattern (SF# 37 and 38). Notably, 10 of the 32 SF samples from anti-CCP positive patients contained very little or no ACPA-reactivity against fibrinogen citrullinated by either PAD isoform. One SF sample from an anti-CCP-negative patient (#3), on the other hand, contained as much reactivity against PAD2-citrullinated fibrinogen as SF from most anti-CCP-positive patients.

We also tested plasma samples from 38 of the patients, with similar results (Fig 2C and 2D).

### Association between ACPAs and disease activity

The reactivity of ACPAs against fibrinogen citrullinated by PAD2 correlated with patient disease activity, as measured by DAS28-ESR, and with inflammatory burden, measured as serum CRP levels (Table 1). The correlation with DAS28-CRP was not significant, however ( $p = 0.15$  for SF and  $p = 0.39$  for plasma; data not shown). The binding of ACPAs to fibrinogen



**Table 1. Correlation between ACPA levels and disease parameters in 32 anti-CCP-positive RA patients.**

	DAS28-ESR*	CRP (mg/l)	Anti-CCP (U/ml)	RF	Leukocyte/ $\mu$ l
Anti-cit-Fib (PAD2) SF	$r_s = 0.37$ $p = 0.042$	$r_s = 0.36$ $p = 0.041$	$r_s = 0.58$ $p = 0.002$	$r_s = 0.27$ $p = 0.13$	$r_s = 0.02$ $p = 0.90$
Anti-cit-Fib (PAD4) SF	$r_s = 0.34$ $p = 0.06$	$r_s = 0.41$ $p = 0.019$	$r_s = 0.56$ $p = 0.001$	$r_s = -0.18$ $p = 0.31$	$r_s = 0.11$ $p = 0.55$
Anti-cit-Fib (PAD2) Plasma	$r_s = 0.33$ $p = 0.10$	$r_s = 0.33$ $p = 0.083$	$r_s = 0.58$ $p = 0.001$	$r_s = 0.31$ $p = 0.11$	$r_s = -0.17$ $p = 0.39$
Anti-cit-Fib (PAD4) Plasma	$r_s = 0.34$ $p = 0.085$	$r_s = 0.39$ $p = 0.041$	$r_s = 0.66$ $p = 0.0001$	$r_s = 0.27$ $p = 0.16$	$r_s = -0.10$ $p = 0.61$

Cit-Fib (PAD2): Fibrinogen citrullinated by PAD2, cit-Fib (PAD4): Fibrinogen citrullinated by PAD4, SF: synovial fluid, CRP: C-reactive protein, ESR: Erythrocyte sedimentation rate, RF: Rheumatoid factor. Spearman's correlation coefficients ( $r_s$ ) and levels of significance are shown.

\*DAS28-ESR data was missing for four patients.

<https://doi.org/10.1371/journal.pone.0203214.t001>

citrullinated by PAD4 correlated with serum CRP levels and there was a trend towards correlation with DAS28-ESR. As expected, the levels of antibodies against citrullinated fibrinogen correlated strongly with serum anti-CCP levels, while no correlation was found with IgM rheumatoid factor levels or leukocyte concentration in SF.

### Autoantibody binding to native and citrullinated ENO1, histone H3 and HSA

To examine the binding of ACPAs to proteins other than fibrinogen, ENO1, histone H3 and HSA were citrullinated by PAD2 and PAD4 (Fig 3A–3C). PAD2 citrullinated ENO1 more efficiently than PAD4, while histone H3 was most efficiently citrullinated by PAD4.

SF samples from 15 anti-CCP-positive RA patients were examined for antibody reactivity against ENO1, histone H3 and HSA (Fig 4A–4C). A remarkably high antibody-reactivity was observed against native ENO1 (Fig 4A) and, in some cases, against native histone H3 (Fig 4B). No detectable binding to native HSA was observed (Fig 4C).

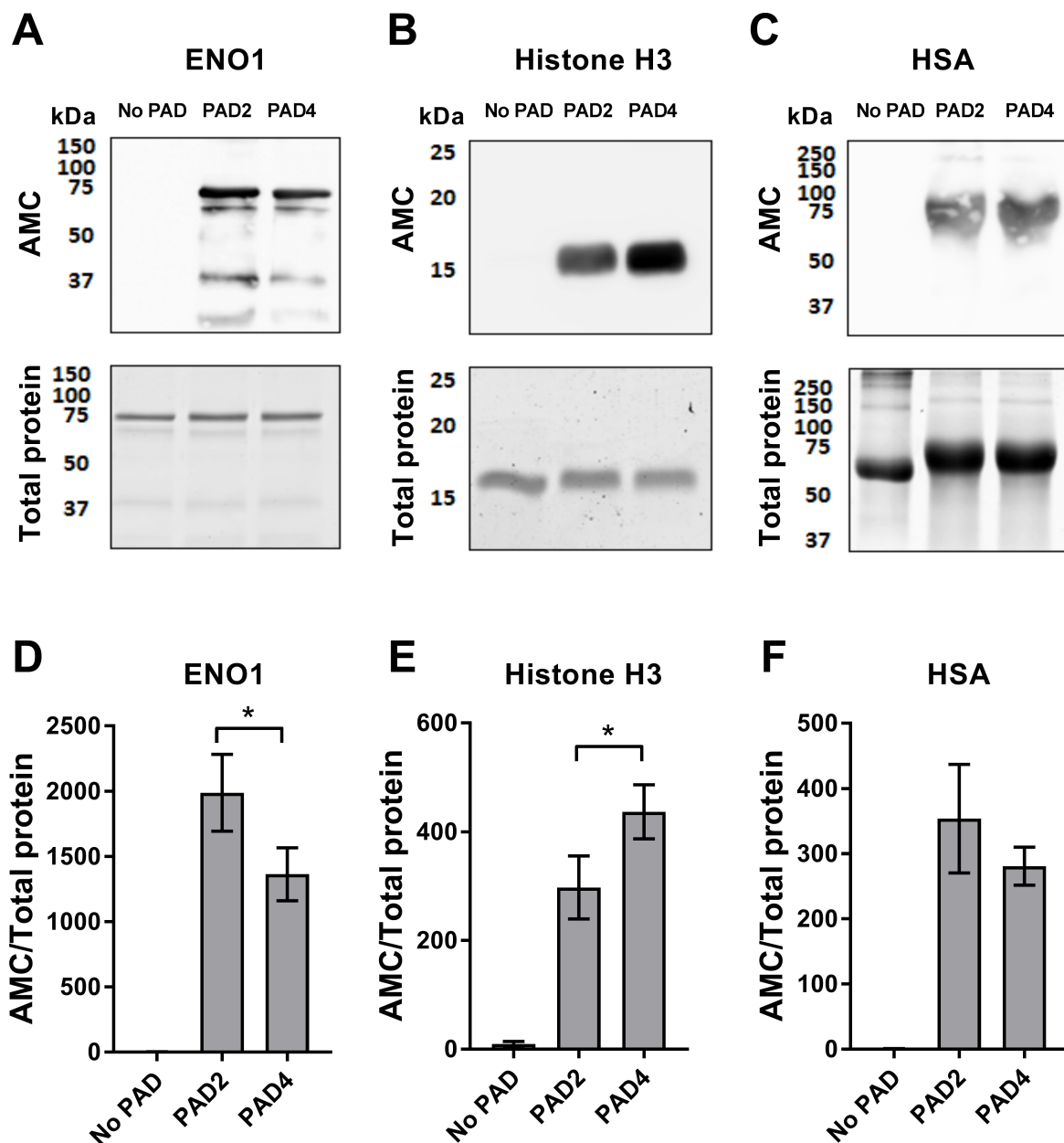
The binding of SF autoantibodies was increased for citrullinated ENO1 and histone H3, compared to the native proteins (Fig 4A and 4B), while citrullination of HSA did not cause an increase in antibody binding (Fig 4C). Binding to ENO1 citrullinated by PAD2 or PAD4 was comparable, but in contrast, ACPAs showed preferential binding to histone H3 citrullinated by PAD4 (Fig 4B).

ACPA binding to the citrullinated proteins was calculated for the 15 anti-CCP-positive and 9 anti-CCP negative RA patients. Notably, some patients who had no antibody reactivity against citrullinated fibrinogen showed reactivity against citrullinated ENO1 or histone H3 (Fig 4D and 4E).

More binding to histone H3 was generally observed after citrullination with PAD4 than with PAD2 (Fig 4E). In general, patients with high reactivity against one protein also showed high reactivity against the other proteins, but exceptions were observed, e.g. #19 and #25 who were only positive for citrullinated histone H3.

### Determination of ACPA cross-reactivity

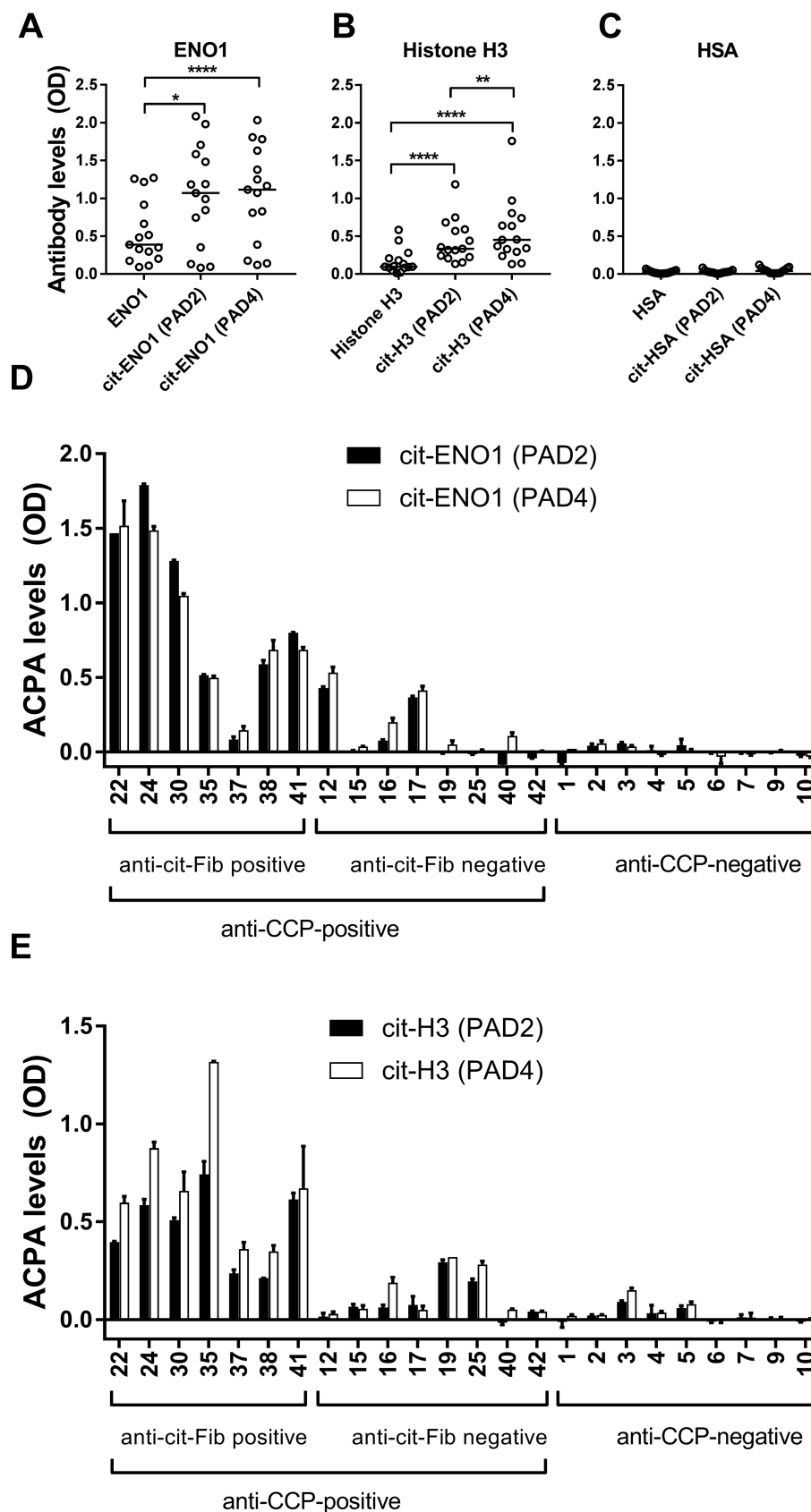
To assess cross-reactivity between ACPAs directed against PAD2- and PAD4-citrullinated fibrinogen, we examined the ability of PAD2-citrullinated fibrinogen to compete for ACPA-binding against PAD4-citrullinated fibrinogen and vice versa. As shown in Fig 5A and 5B, incubation of SF with fibrinogen citrullinated by one PAD isoform strongly inhibited the binding of IgG antibodies to the other isoform, indicating that ACPAs generally do not discriminate between fibrinogen citrullinated by PAD2 and PAD4.



**Fig 3. In vitro citrullination of ENO1, histone H3 and HSA by PAD2 and PAD4.** (A) ENO1, (B) histone H3 and (C) HSA were citrullinated with PAD2 and PAD4 (2  $\mu$ g PAD per mg protein). Western blots (upper panels) show citrullination, as detected by the AMC kit, and gel electrophoresis followed by brilliant blue staining (lower panels) shows total protein. (D-F) The density of the visible bands corresponding to citrullinated protein in the AMC blot was normalized to the total protein signal. Mean and SEM are shown for triplicate blots, \* $p < 0.05$ .

<https://doi.org/10.1371/journal.pone.0203214.g003>

In contrast, citrullinated ENO1 and citrullinated histone H3 showed little or no ability to compete with citrullinated fibrinogen for ACPAs, irrespective of whether PAD2 or PAD4 was used for citrullination (5A and 5B), suggesting a high degree of antigen-specificity. In agreement, fibrinogen citrullinated by PAD2 or PAD4 showed modest or no ability to compete with citrullinated ENO1 or histone H3 for ACPAs (data not shown).



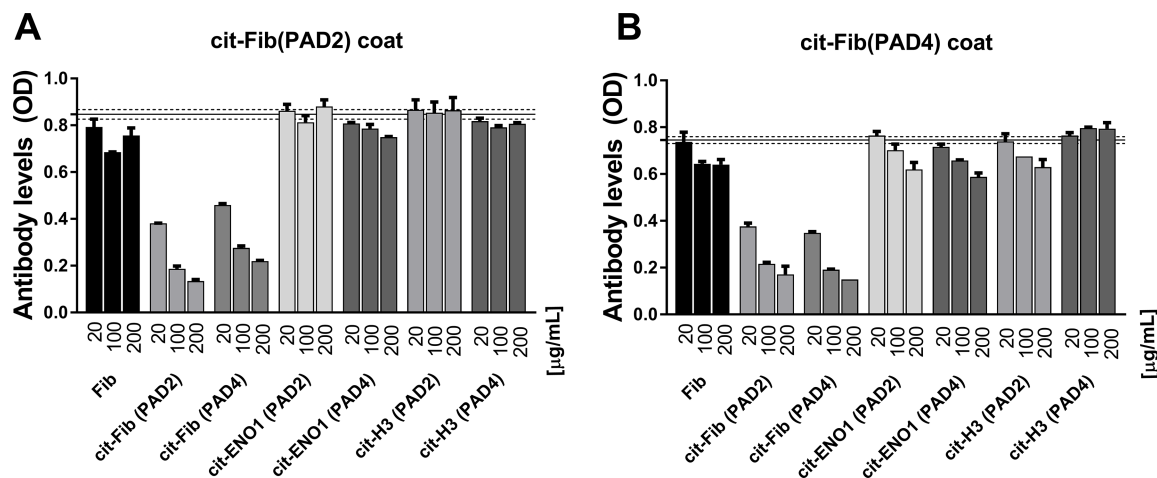
**Fig 4. Binding of antibodies from RA patients to citrullinated and native proteins.** Microtiter plates were coated with native protein or protein citrullinated by either PAD2 or PAD4 (2  $\mu$ g PAD per mg protein), and SF samples from 15 anti-CCP-positive RA patients were applied at a 1:50 dilution. Binding of IgG antibodies to native or citrullinated (A) ENO1, (B) histone H3 and (C) HSA are shown as an average of duplicate optical density (OD) measurements, and horizontal bars represent median values. (D) ACPA binding to citrullinated ENO1 and (E) histone H3 was calculated for the 15 anti-CCP-positive RA patients and additional 9 anti-CCP-negative RA patients. Shown are averages and range of duplicate OD measurements, after subtraction of signals obtained for native protein.

<https://doi.org/10.1371/journal.pone.0203214.g004>

## Discussion

PAD2 and PAD4 are present in the synovium of RA patients [11,40], but their individual roles in generation of citrullinated self-antigens targeted by ACPAs is poorly understood. We have here examined the binding of ACPAs to three proteins (fibrinogen, ENO1 and histone H3) known to be antigens in RA, and to HSA, as a protein not reported to be antigenic, following *in vitro* citrullination with PAD2 or PAD4.

When fibrinogen was used as antigen, autoantibodies from pooled SF from RA patients reacted equally well with PAD2- and PAD4-citrullinated fibrinogen, at any SF dilution employed and at any PAD concentration used for citrullination. These findings are not in complete agreement with the findings of Blachère et al., who found that at high dilutions of serum (1:250 or more), ACPAs bound better to PAD4-citrullinated fibrinogen than to PAD2--citrullinated fibrinogen [34]. We used 1:50 dilutions of SF and plasma as standard, but observed the same pattern at higher dilutions. Differences in the results of Blachère et al. and ours may also have been caused by differences in the citrullination procedure [34], but both studies showed a higher degree of citrullination of fibrinogen by PAD2 than by PAD4. Great degree of overlap between fibrinogen sites citrullinated by PAD2 and PAD4 have been demonstrated, although sites targeted by one PAD isoform, specifically, have also been described [25,27]. Since PAD2-citrullinated fibrinogen competitively inhibited ACPA-binding to PAD4-citrullinated fibrinogen and vice versa in this study, ACPAs seemingly do not show a



**Fig 5. ACPA cross-reactivity assessed by competitive ELISA.** Microtiter plates were coated with fibrinogen citrullinated by either (A) PAD2 or (B) PAD4 (2  $\mu$ g PAD per mg protein). A pool of SF from three RA patients, diluted 1:50, was pre-incubated with increasing concentrations of native fibrinogen, fibrinogen citrullinated by PAD2 (cit-Fib(PAD2)) or by PAD4 (cit-Fib(PAD4)), ENO1 citrullinated by PAD2 (cit-ENO1(PAD2)) or by PAD4 (cit-ENO1 (PAD4)), or histone H3 citrullinated with PAD2 (cit-H3(PAD2)) or PAD4 (cit-H3(PAD4)) for 30 minutes before addition to the plates. Binding signals obtained in the absence of added protein ( $n = 7$ ) are shown as mean (solid line) and 95% CI (dotted line). The subsequent binding of IgG antibodies within the SF pool to (A) PAD2-citrullinated fibrinogen or (B) PAD4-citrullinated fibrinogen, as determined by ELISA, are shown as mean  $\pm$  SEM of duplicate measurements.

<https://doi.org/10.1371/journal.pone.0203214.g005>

generalized preferential binding to fibrinogen citrullinated by either isoform. Moreover, citrullinated histone H3 and citrullinated ENO1 competed poorly with citrullinated fibrinogen for ACPA binding and vice versa, supporting the notion that ACPAs are predominantly antigen-specific. Using citrullinated fibrinogen and peptides derived from ENO1 and collagen type II, Snir et al. also found no or modest ACPAs cross-reactivity [36]. However, another study found that citrullinated peptides from filaggrin inhibited binding to intact citrullinated fibrinogen, indicating that filaggrin and fibrinogen contain common epitopes [41]. Of note, we did not observe ACPA binding to citrullinated HSA, indicating that not all citrullinated proteins are targeted by ACPAs.

When SF samples from individual patients were examined, ACPAs from most patients reacted equally well with fibrinogen citrullinated by PAD2 and PAD4, and the same was observed with citrullinated ENO1. Notably, ACPAs from a few patients bound preferentially to fibrinogen citrullinated by one isoform or the other. There was increased ACPA binding to histone H3 citrullinated by PAD4. This may be explained by higher degree of citrullination by PAD4. Moreover, due to its intranuclear location, PAD4 is thought to be the isoform responsible for citrullination of histone H3 in activated neutrophils [32,42,43]. However, it was shown recently that PAD2 also citrullinates histone H3 upon release from stimulated neutrophils [33]. Both isoforms may thus contribute to generation of target sites for ACPAs in histone H3 *in vivo*.

In this study, the binding of autoantibodies to native fibrinogen was negligible, but relatively high autoantibody reactivity against native ENO1 was present. Some patients also had autoantibodies against native histone H3. Other researchers have demonstrated binding of autoantibodies to native proteins in RA, i.e. ENO1 and heterogeneous nuclear ribonucleoproteins A2/B1 [22,44]. Thus, measurement of antibodies to citrullinated proteins may include signals that are caused by antibody-binding to native epitopes, but seemingly this is not the case for fibrinogen. It is conceivable that breakage of tolerance by citrullinated sites in ENO1 and histone H3 leads to formation of autoantibodies targeting native sites via epitope spreading. We have here focused on antibodies reacting with citrullinated epitopes, specifically.

In accordance with a well-established correlation between anti-CCP levels and disease activity [6,45], we observed a link between high reactivity of ACPAs in SF against fibrinogen citrullinated by either PAD isoform and high disease activity, expressed as DAS28-ESR or circulating CRP levels.

Our study indicates that PAD2 and PAD4 are equally efficient at generating target sites for ACPAs, at calcium concentration and pH comparable to those existing in SF, where citrullination of fibrinogen presumably takes place [14,17,18]. Although the DTT used here as reducing agent may be stronger than physiological reductants, PAD2 and PAD4 have similar activities at various redox conditions [29], so the results presented here are likely to reflect their relative efficiencies in SF where both isoforms are present [32,40]. Due to differences in intracellular and extracellular localization, on the other hand [32,33,42], PAD2 and PAD4 may still play different roles in the pathogenesis of RA and other diseases.

## Conclusions

PAD2 and PAD4 are both capable generating citrullinated epitopes in fibrinogen, ENO1 and histone H3 recognized by ACPAs, while citrullinated HSA is not a target.

## Supporting information

**S1 Fig. Influence of anti-PAD antibodies in the measurement of ACPAs reacting with citrullinated fibrinogen.** IgG autoantibodies against PAD2- or PAD4-coated plates at the

corresponding concentration to what is present in the preparations of citrullinated fibrinogen (3 ng/mL). Shown are optical density (OD) values for all patients. Each data point represents duplicate measurements.  
(DOCX)

## Author Contributions

**Conceptualization:** Dres Damgaard, Allan Stensballe, Miriam A. Shelef, Claus H. Nielsen.

**Data curation:** Dres Damgaard, Mandar Bawadekar, Ladislav Senolt, Miriam A. Shelef, Claus H. Nielsen.

**Formal analysis:** Dres Damgaard, Mandar Bawadekar, Ladislav Senolt, Allan Stensballe, Miriam A. Shelef, Claus H. Nielsen.

**Investigation:** Dres Damgaard, Claus H. Nielsen.

**Methodology:** Dres Damgaard, Mandar Bawadekar, Ladislav Senolt, Miriam A. Shelef, Claus H. Nielsen.

**Project administration:** Dres Damgaard.

**Writing – original draft:** Dres Damgaard, Claus H. Nielsen.

**Writing – review & editing:** Dres Damgaard, Mandar Bawadekar, Ladislav Senolt, Allan Stensballe, Miriam A. Shelef, Claus H. Nielsen.

## References

1. Schellekens GA, Visser H, de Jong BA, van den Hoogen FH, Hazes JM, Breedveld FC, et al. The diagnostic properties of rheumatoid arthritis antibodies recognizing a cyclic citrullinated peptide. *Arthritis Rheum* 2000 Jan; 43(1):155–63. [https://doi.org/10.1002/1529-0131\(200001\)43:1<155::AID-ANR20>3.0.CO;2-3](https://doi.org/10.1002/1529-0131(200001)43:1<155::AID-ANR20>3.0.CO;2-3) PMID: 10643712
2. Lee DM, Schur PH. Clinical utility of the anti-CCP assay in patients with rheumatic diseases. *Ann Rheum Dis* 2003 Sep; 62(9):870–4. <https://doi.org/10.1136/ard.62.9.870> PMID: 12922961
3. Hill JA, Southwood S, Sette A, Jevnikar AM, Bell DA, Cairns E. Cutting edge: the conversion of arginine to citrulline allows for a high-affinity peptide interaction with the rheumatoid arthritis-associated HLA-DRB1\*0401 MHC class II molecule. *J Immunol* 2003 Jul 15; 171(2):538–41. PMID: 12847215
4. Huizinga TW, Amos CI, van der Helm-van Mil AH, Chen W, van Gaalen FA, Jawaheer D, et al. Refining the complex rheumatoid arthritis phenotype based on specificity of the HLA-DRB1 shared epitope for antibodies to citrullinated proteins. *Arthritis Rheum* 2005 Nov; 52(11):3433–8. <https://doi.org/10.1002/art.21385> PMID: 16255021
5. Klareskog L, Stolt P, Lundberg K, Kallberg H, Bengtsson C, Grunewald J, et al. A new model for an etiology of rheumatoid arthritis: smoking may trigger HLA-DR (shared epitope)-restricted immune reactions to autoantigens modified by citrullination. *Arthritis Rheum* 2006 Jan; 54(1):38–46. <https://doi.org/10.1002/art.21575> PMID: 16385494
6. Kastbom A, Strandberg G, Lindroos A, Skogh T. Anti-CCP antibody test predicts the disease course during 3 years in early rheumatoid arthritis (the Swedish TIRA project). *Ann Rheum Dis* 2004 Sep; 63(9):1085–9. <https://doi.org/10.1136/ard.2003.016808> PMID: 15308517
7. Forslind K, Ahlmen M, Eberhardt K, Hafstrom I, Svensson B. Prediction of radiological outcome in early rheumatoid arthritis in clinical practice: role of antibodies to citrullinated peptides (anti-CCP). *Ann Rheum Dis* 2004 Sep; 63(9):1090–5. <https://doi.org/10.1136/ard.2003.014233> PMID: 15308518
8. Ronnelid J, Wick MC, Lampa J, Lindblad S, Nordmark B, Klareskog L, et al. Longitudinal analysis of citrullinated protein/peptide antibodies (anti-CP) during 5 year follow up in early rheumatoid arthritis: anti-CP status predicts worse disease activity and greater radiological progression. *Ann Rheum Dis* 2005 Dec; 64(12):1744–9. <https://doi.org/10.1136/ard.2004.033571> PMID: 15843452
9. Makrygiannakis D, af KE, Lundberg IE, Lofberg R, Ulfgren AK, Klareskog L, et al. Citrullination is an inflammation-dependent process. *Ann Rheum Dis* 2006 Sep; 65(9):1219–22. <https://doi.org/10.1136/ard.2005.049403> PMID: 16540548



10. Vossenaar ER, Zendman AJ, van Venrooij WJ, Pruijn GJ. PAD, a growing family of citrullinating enzymes: genes, features and involvement in disease. *Bioessays* 2003 Nov; 25(11):1106–18. <https://doi.org/10.1002/bies.10357> PMID: 14579251
11. Foulquier C, Sebbag M, Clavel C, Chapuy-Regaud S, Al BR, Mechin MC, et al. Peptidyl arginine deiminase type 2 (PAD-2) and PAD-4 but not PAD-1, PAD-3, and PAD-6 are expressed in rheumatoid arthritis synovium in close association with tissue inflammation. *Arthritis Rheum* 2007 Nov; 56(11):3541–53. <https://doi.org/10.1002/art.22983> PMID: 17968929
12. Damgaard D, Senolt L, Nielsen CH. Increased levels of peptidylarginine deiminase 2 in synovial fluid from anti-CCP-positive rheumatoid arthritis patients: Association with disease activity and inflammatory markers. *Rheumatology (Oxford)* 2016 May; 55(5):918–27.
13. Makrygiannakis D, Revu S, Engstrom M, af KE, Nicholas AP, Pruijn GJ, et al. Local administration of glucocorticoids decreases synovial citrullination in rheumatoid arthritis. *Arthritis Res Ther* 2012; 14(1): R20. <https://doi.org/10.1186/ar3702> PMID: 22284820
14. Tuttoren AE, Fleckenstein B, de Souza GA. Assessing the citrullinome in rheumatoid arthritis synovial fluid with and without enrichment of citrullinated peptides. *J Proteome Res* 2014 Jun 6; 13(6):2867–73. <https://doi.org/10.1021/pr500030x> PMID: 24724574
15. Masson-Bessiere C, Sebbag M, Girbal-Neuhausser E, Nogueira L, Vincent C, Senshu T, et al. The major synovial targets of the rheumatoid arthritis-specific antifilaggrin autoantibodies are deiminated forms of the alpha- and beta-chains of fibrin. *J Immunol* 2001 Mar 15; 166(6):4177–84. PMID: 11238669
16. Takizawa Y, Suzuki A, Sawada T, Ohsaka M, Inoue T, Yamada R, et al. Citrullinated fibrinogen detected as a soluble citrullinated autoantigen in rheumatoid arthritis synovial fluids. *Ann Rheum Dis* 2006 Aug; 65(8):1013–20. <https://doi.org/10.1136/ard.2005.044743> PMID: 16449316
17. van Beers JJ, Schwarte CM, Stammen-Vogelzangs J, Oosterink E, Bozic B, Pruijn GJ. The rheumatoid arthritis synovial fluid citrullinome reveals novel citrullinated epitopes in apolipoprotein E, myeloid nuclear differentiation antigen, and beta-actin. *Arthritis Rheum* 2013 Jan; 65(1):69–80. <https://doi.org/10.1002/art.37720> PMID: 23044660
18. Wang F, Chen FF, Gao WB, Wang HY, Zhao NW, Xu M, et al. Identification of citrullinated peptides in the synovial fluid of patients with rheumatoid arthritis using LC-MALDI-TOF/TOF. *Clin Rheumatol* 2016 Apr 8.
19. Sokolove J, Zhao X, Chandra PE, Robinson WH. Immune complexes containing citrullinated fibrinogen costimulate macrophages via Toll-like receptor 4 and Fcγ receptor. *Arthritis Rheum* 2011 Jan; 63(1):53–62. <https://doi.org/10.1002/art.30081> PMID: 20954191
20. Feitsma AL, van der Voort EI, Franken KL, el BH, Elferink BG, Drijfhout JW, et al. Identification of citrullinated vimentin peptides as T cell epitopes in HLA-DR4-positive patients with rheumatoid arthritis. *Arthritis Rheum* 2010 Jan; 62(1):117–25. <https://doi.org/10.1002/art.25059> PMID: 20039411
21. Lundberg K, Kinloch A, Fisher BA, Wegner N, Wait R, Charles P, et al. Antibodies to citrullinated alpha-enolase peptide 1 are specific for rheumatoid arthritis and cross-react with bacterial enolase. *Arthritis Rheum* 2008 Oct; 58(10):3009–19. <https://doi.org/10.1002/art.23936> PMID: 18821669
22. Kinloch A, Tatzer V, Wait R, Peston D, Lundberg K, Donatien P, et al. Identification of citrullinated alpha-enolase as a candidate autoantigen in rheumatoid arthritis. *Arthritis Res Ther* 2005; 7(6):R1421–R1429. <https://doi.org/10.1186/ar1845> PMID: 16277695
23. Burkhardt H, Sehnert B, Bockermann R, Engstrom A, Kalden JR, Holmdahl R. Humoral immune response to citrullinated collagen type II determinants in early rheumatoid arthritis. *Eur J Immunol* 2005 May; 35(5):1643–52. <https://doi.org/10.1002/eji.200526000> PMID: 15832289
24. Meng X, Ezzati P, Smolik I, Bernstein CN, Hitchon CA, El-Gabalawy HS. Characterization of Autoantigens Targeted by Anti-Citrullinated Protein Antibodies In Vivo: Prominent Role for Epitopes Derived from Histone 4 Proteins. *PLoS One* 2016; 11(10):e0165501. <https://doi.org/10.1371/journal.pone.0165501> PMID: 27788229
25. Assouhou-Luty C, Raijmakers R, Benckhuijsen WE, Stammen-Vogelzangs J, de RA, van Veelen PA, et al. The human peptidylarginine deiminases type 2 and type 4 have distinct substrate specificities. *Biochim Biophys Acta* 2014 Mar 2; 1844(4):829–36. <https://doi.org/10.1016/j.bbapap.2014.02.019> PMID: 24594197
26. van Beers JJ, Raijmakers R, Alexander LE, Stammen-Vogelzangs J, Lokate AM, Heck AJ, et al. Mapping of citrullinated fibrinogen B-cell epitopes in rheumatoid arthritis by imaging surface plasmon resonance. *Arthritis Res Ther* 2010; 12(6):R219. <https://doi.org/10.1186/ar3205> PMID: 21182780
27. Nakayama-Hamada M, Suzuki A, Kubota K, Takazawa T, Ohsaka M, Kawaida R, et al. Comparison of enzymatic properties between hPAD2 and hPAD4. *Biochem Biophys Res Commun* 2005 Feb 4; 327(1):192–200. <https://doi.org/10.1016/j.bbrc.2004.11.152> PMID: 15629448



28. Damgaard D, Senolt L, Nielsen M, Pruijn G, Nielsen CH. Demonstration of extracellular peptidylarginine deiminase (PAD) activity in synovial fluid of patients with rheumatoid arthritis using a novel assay for citrullination of fibrinogen. *Arthritis Res Ther* 2014 Dec 5; 16(6):498. <https://doi.org/10.1186/s13075-014-0498-9> PMID: 25475141
29. Damgaard D, Bjorn ME, Steffensen MA, Pruijn GJ, Nielsen CH. Reduced glutathione as a physiological co-activator in the activation of peptidylarginine deiminase. *Arthritis Res Ther* 2016; 18(1):102. <https://doi.org/10.1186/s13075-016-1000-7> PMID: 27149996
30. Damgaard D, Bjorn ME, Jensen PO, Nielsen CH. Reactive oxygen species inhibit catalytic activity of peptidylarginine deiminase. *J Enzyme Inhib Med Chem* 2017 Dec; 32(1):1203–8. <https://doi.org/10.1080/14756366.2017.1368505> PMID: 28933232
31. Vossenaar ER, Radstake TR, van der Heijden A, van Mansum MA, Dieteren C, de Rooij DJ, et al. Expression and activity of citrullinating peptidylarginine deiminase enzymes in monocytes and macrophages. *Ann Rheum Dis* 2004 Apr; 63(4):373–81. <https://doi.org/10.1136/ard.2003.012211> PMID: 15020330
32. Spengler J, Lugonja B, Jimmy YA, Zubarev RA, Creese AJ, Pearson MJ, et al. Release of Active Peptidyl Arginine Deiminases by Neutrophils Can Explain Production of Extracellular Citrullinated Autoantigens in Rheumatoid Arthritis Synovial Fluid. *Arthritis Rheumatol* 2015 Dec; 67(12):3135–45. <https://doi.org/10.1002/art.39313> PMID: 26245941
33. Zhou Y, Chen B, Mittereder N, Chaerkady R, Strain M, An LL, et al. Spontaneous Secretion of the Citrullination Enzyme PAD2 and Cell Surface Exposure of PAD4 by Neutrophils. *Front Immunol* 2017; 8:1200. <https://doi.org/10.3389/fimmu.2017.01200> PMID: 28993780
34. Blachere NE, Parveen S, Frank MO, Dill BD, Molina H, Orange DE. High-Titer Rheumatoid Arthritis Antibodies Preferentially Bind Fibrinogen Citrullinated by Peptidylarginine Deiminase 4. *Arthritis Rheumatol* 2017 May; 69(5):986–95. <https://doi.org/10.1002/art.40035> PMID: 28029744
35. Ioan-Facsinay A, el-Bannoudi H, Scherer HU, van der Woude D, Menard HA, Lora M, et al. Anti-cyclic citrullinated peptide antibodies are a collection of anti-citrullinated protein antibodies and contain overlapping and non-overlapping reactivities. *Ann Rheum Dis* 2011 Jan; 70(1):188–93. <https://doi.org/10.1136/ard.2010.131102> PMID: 20736390
36. Snir O, Widhe M, von SC, Lindberg J, Padyukov L, Lundberg K, et al. Multiple antibody reactivities to citrullinated antigens in sera from patients with rheumatoid arthritis: association with HLA-DRB1 alleles. *Ann Rheum Dis* 2009 May; 68(5):736–43. <https://doi.org/10.1136/ard.2008.091355> PMID: 18635594
37. Fernandes-Cerqueira C, Ossipova E, Gunasekera S, Hansson MA, Mathsson L, Catrina AI, et al. Targeting of anti-citrullinated protein/peptide antibodies in rheumatoid arthritis using peptides mimicking endogenously citrullinated fibrinogen antigens. *Arthritis Res Ther* 2015 Jun 10; 17:155. <https://doi.org/10.1186/s13075-015-0666-6> PMID: 26059223
38. Arnett FC, Edworthy SM, Bloch DA, McShane DJ, Fries JF, Cooper NS, et al. The American Rheumatism Association 1987 revised criteria for the classification of rheumatoid arthritis. *Arthritis Rheum* 1988 Mar; 31(3):315–24. PMID: 3358796
39. Bawadekar M, Shim D, Johnson CJ, Warner TF, Rebernick R, Damgaard D, et al. Peptidylarginine deiminase 2 is required for tumor necrosis factor alpha-induced citrullination and arthritis, but not neutrophil extracellular trap formation. *J Autoimmun* 2017 Jun; 80:39–47. <https://doi.org/10.1016/j.jaut.2017.01.006> PMID: 28188029
40. Kinloch A, Lundberg K, Wait R, Wegner N, Lim NH, Zendman AJ, et al. Synovial fluid is a site of citrullination of autoantigens in inflammatory arthritis. *Arthritis Rheum* 2008 Aug; 58(8):2287–95. <https://doi.org/10.1002/art.23618> PMID: 18668562
41. Sebbag M, Moinard N, Auger I, Clavel C, Arnaud J, Nogueira L, et al. Epitopes of human fibrin recognized by the rheumatoid arthritis-specific autoantibodies to citrullinated proteins. *Eur J Immunol* 2006 Aug; 36(8):2250–63. <https://doi.org/10.1002/eji.200535790> PMID: 16838278
42. Nakashima K, Hagiwara T, Yamada M. Nuclear localization of peptidylarginine deiminase V and histone deimination in granulocytes. *J Biol Chem* 2002 Dec 20; 277(51):49562–8. <https://doi.org/10.1074/jbc.M208795200> PMID: 12393868
43. Asaga H, Nakashima K, Senshu T, Ishigami A, Yamada M. Immunocytochemical localization of peptidylarginine deiminase in human eosinophils and neutrophils. *J Leukoc Biol* 2001 Jul; 70(1):46–51. PMID: 11435484
44. König MF, Giles JT, Nigrovic PA, Andrade F. Antibodies to native and citrullinated RA33 (hnRNP A2/B1) challenge citrullination as the inciting principle underlying loss of tolerance in rheumatoid arthritis. *Ann Rheum Dis* 2016 Nov; 75(11):2022–8. <https://doi.org/10.1136/annrheumdis-2015-208529> PMID: 26865600
45. del Val del AN, Ibanez BR, Fito MC, Gutierrez PR, Loza CE. Anti-cyclic citrullinated peptide antibody in rheumatoid arthritis: relation with disease aggressiveness. *Clin Exp Rheumatol* 2006 May; 24(3):281–6. PMID: 16870095