

Mapping of equine mesenchymal stromal cell surface proteomes for identification of specific markers using proteomics and gene expression analysis

an in vitro cross-sectional study

Bundgaard, Louise; Stensballe, Allan; Elbæk, Kirstine Juul; Berg, Lise Charlotte

Published in:
Stem Cell Research & Therapy

DOI (link to publication from Publisher):
[10.1186/s13287-018-1041-8](https://doi.org/10.1186/s13287-018-1041-8)

Creative Commons License
CC BY 4.0

Publication date:
2018

Document Version
Publisher's PDF, also known as Version of record

[Link to publication from Aalborg University](#)

Citation for published version (APA):

Bundgaard, L., Stensballe, A., Elbæk, K. J., & Berg, L. C. (2018). Mapping of equine mesenchymal stromal cell surface proteomes for identification of specific markers using proteomics and gene expression analysis: an in vitro cross-sectional study. *Stem Cell Research & Therapy*, 9(1), Article 288. <https://doi.org/10.1186/s13287-018-1041-8>

General rights

Copyright and moral rights for the publications made accessible in the public portal are retained by the authors and/or other copyright owners and it is a condition of accessing publications that users recognise and abide by the legal requirements associated with these rights.

- Users may download and print one copy of any publication from the public portal for the purpose of private study or research.
- You may not further distribute the material or use it for any profit-making activity or commercial gain
- You may freely distribute the URL identifying the publication in the public portal -

Take down policy

If you believe that this document breaches copyright please contact us at vbn@aub.aau.dk providing details, and we will remove access to the work immediately and investigate your claim.

RESEARCH

Open Access



Mapping of equine mesenchymal stromal cell surface proteomes for identification of specific markers using proteomics and gene expression analysis: an in vitro cross-sectional study

Louise Bundgaard^{1*} , Allan Stensballe², Kirstine Juul Elbæk² and Lise Charlotte Berg¹

Abstract

Background: Stem cells have great potential for tissue regeneration, but before stem cell populations can be used in the clinic, it is crucial that the stem cells have been definitely characterized by a set of specific markers. Although there have been attempts to identify a set of immunophenotypic markers to characterize equine mesenchymal stromal cells (MSCs), immunophenotyping of equine MSCs is still challenging due to the limited availability of suitable antibodies of high quality and consistent performance across different laboratories. The aim of this study was to evaluate a strategy for mapping the equine MSCs surface proteome by use of biotin-enrichment and mass spectrometry (MS) analysis and mine the proteome for potential equine MSCs surface markers belonging to the cluster of differentiation protein group. Gene expression analysis was used for verification.

Methods: Equine MSCs derived from bone marrow (BM) ($n = 3$) and adipose tissue (AT) ($n = 3$) were expanded to P3 and either used for (1) cell differentiation into mesodermal lineages (chondrogenic and osteogenic), (2) enrichment of the MSCs surface proteins by biotinylation followed by in-gel digest of the isolated proteins and nanoLC-MS/MS analysis to unravel the enriched cell surface proteome, and (3) RNA isolation and quantitative real-time reverse transcriptase PCR analysis of the CD29, CD44, CD90, CD105, CD166, CD34, CD45, and CD79a gene expression.

Results: A total of 1239 proteins at 1% FDR were identified by MS analysis of the enriched MSCs surface protein samples. Of these proteins, 939 were identified in all six biological samples. The identified proteins included 19 proteins appointed to the cluster of differentiation classification system as potential cell surface targets. The protein and gene expression pattern was positive for the commonly used positive MSCs markers CD29, CD44, CD90, CD105, and CD166, and lacked the negative MSCs markers CD34, CD45, and CD79a.

Conclusions: The findings of this study show that enrichment of the MSCs surface proteome by biotinylation followed by MS analysis is a valuable alternative to immunophenotyping of surface markers, when suitable antibodies are not available. Further, they support gene expression analysis as a valuable control analysis to verify the data.

Keywords: Mesenchymal stromal cells, CD surface markers, Biotinylation, Mass spectrometry, Gene expression, Equine

* Correspondence: lb@sund.ku.dk

¹Department of Veterinary Clinical Sciences, University of Copenhagen, Agrovej 8, DK-2630 Taastrup, Denmark

Full list of author information is available at the end of the article



© The Author(s). 2018 **Open Access** This article is distributed under the terms of the Creative Commons Attribution 4.0 International License (<http://creativecommons.org/licenses/by/4.0/>), which permits unrestricted use, distribution, and reproduction in any medium, provided you give appropriate credit to the original author(s) and the source, provide a link to the Creative Commons license, and indicate if changes were made. The Creative Commons Public Domain Dedication waiver (<http://creativecommons.org/publicdomain/zero/1.0/>) applies to the data made available in this article, unless otherwise stated.

Background

Similar to humans, the horse is a long-lived athletic species, and regenerative medicine is seen as the next-generation treatment to restore normal function of cells and tissues damaged by time, injury or disease. Stem cells have great potential for tissue repair and regeneration; that is why, they are intensely investigated in equine clinical research [1, 2]. However, before any type of stem cell can be applied in practice, it is crucial that the isolated stem cells have been definitively characterized by a set of specific functional or phenotypic markers.

A common definition of equine mesenchymal stromal cells (MSCs) is still lacking, but in humans, characterization of these cells is well defined by the criteria of the International Society for Cellular Therapy (ISCT) [3]. ISCT has stated that MSCs must be plastic adherent and be capable of differentiating toward the osteogenic, chondrogenic, and adipogenic lineage. Furthermore, they must express CD29, CD44, CD73, CD90, and CD105 and lack expression of CD14, CD34, CD45, CD79a, and MHC II. Although there have been attempts to identify a set of immunophenotypic markers to characterize equine MSCs [4–6], immunophenotyping of equine MSCs is still challenging due to the limited availability of suitable antibodies of high quality and consistent performance across different laboratories [5, 7]. Radcliffe et al. [5] found that only 4 of 15 antibodies tested (27%) were reactive to equine molecules using flow cytometry analysis. De Schauwer et al. [7] found that 11 out of 30 antibodies (37%) were reactive to equine molecules, and they were not able to confirm cross-reactivity of two tested clones used in other studies to characterize equine MSCs. In general, cross-reactivity for antihuman monoclonal antibodies to equine epitopes is limited. In a large test of 379 antihuman monoclonal antibodies, only 14 recognized the corresponding epitopes on isolated equine leukocytes, which is less than 5% [8]. This illustrates the need for studies evaluating alternative methods for identification of MSCs markers.

Mass spectrometry (MS) is a rapidly advancing technology for identification and quantification of proteins applicable to stem cell investigation [9], thus circumventing the need of antibodies for cell phenotyping. This analysis technology in combination with cell surface protein biotinylation to enrich the plasma membrane proteins has successfully been used for comprehensive analysis of cell surface proteomes, e.g., to identify spermatozoa surface proteins and quantitative changes during epididymal maturation in boars [10] and bulls [11], and to identify surface proteins of human dental pulp stem cells and their variation between culture conditions [12]. Furthermore, this approach has been used for comprehensive analysis of the human BM-MSCs surface proteome [13, 14].

Gene expression analysis at the mRNA level is another potentially valuable alternative to antibody-based methods, and compared to MS, which is still only accessible at specialized proteomic core facilities, qPCR analysis is available in most laboratories.

The aim of this study was to analyze and compare the equine adipose tissue (AT)-derived and bone marrow (BM)-derived MSCs surface proteome by use of biotin enrichment and MS analysis and mine the proteomes for potential equine MSCs surface markers appointed to the cluster of differentiation (CD) classification system. Gene expression analysis was used to verify the results.

Methods

The experimental protocol was approved by the Ethics and Welfare Committee of Department of Veterinary Clinical Sciences, University of Copenhagen, Denmark.

Animals used in the study

MSCs derived from BM ($n = 3$) and AT ($n = 3$) were obtained from mares of mixed breeds, weighing approx. 500 kg and ranging from 13 to 17 years. The horses were euthanized with captive bolt and exsanguination at the Large Animal Teaching Hospital, University of Copenhagen, for unrelated reasons.

Sampling of bone marrow and adipose tissue

BM-MSCs were isolated from sternal BM aspirates. The skin over the sternum was surgically prepared immediately post-euthanasia in a routine manner, and 5–7 mL BM was aspirated using a Jamshidi biopsy needle (11 gauge, 12.7 cm) (Stryker, Kalamazoo, MI, USA) in a 20-mL syringe preloaded with 1 mL 10% 0.109 M trisodium citrate. The aspirate was transferred to a 50-mL falcon tube and inverted gently.

AT-MSCs were isolated from adipose tissue from the region above the biceps femoris muscle at the base of the tail. The skin was surgically prepared immediately post-euthanasia in a routine manner, and a 10 cm × 10 cm piece of epidermis and dermis was removed to expose the subcutaneous AT. Approximately 15 g of AT was harvested, avoiding fascia and blood vessels and transferred to a 50-mL falcon tube with 30 mL sterile PBS.

All samples were transported at room temperature to the laboratory immediately and further processed within ~1 h after sampling.

Isolation of mesenchymal stromal cells

BM was layered gently onto Histopaque-1077 (Sigma-Aldrich, St. Louis, MI, USA) 1:1 (v/v) and centrifuged 30 min at 600g. The buffy layer containing the mononuclear cells was recovered and washed twice in sterile PBS (5 min at 200g),

supernatant was discarded, and the cell pellet resuspended in 24 mL expansion medium (EM) (Dulbecco's modified Eagle's medium (DMEM) 1 g/L glucose, with phenol red, GlutaMAX, and pyruvate (Thermo Fischer Scientific, Waltham, MA, USA) supplemented with 10% (v/v) fetal bovine serum (FBS) (Thermo Fischer Scientific, Waltham, MA, USA), 100 U/mL penicillin and 100 µg/mL streptomycin (Thermo Fischer Scientific, Waltham, MA, USA), and 25 µg/mL amphotericin B (Thermo Fischer Scientific, Waltham, MA, USA)). The cells were distributed equally in two T75 cm² culture flasks and cultured at 37 °C in a humidified atmosphere containing 5% CO₂.

AT was washed three times in sterile PBS, dissected to smaller pieces, and digested in sterile filtered (0.2 µm) (Sartorius, Goettingen, Germany) enzyme medium (DMEM 1 g glucose/L, with phenol red, GlutaMAX, and pyruvate, supplemented with 100 U/mL penicillin and 100 µg/mL streptomycin, 50 µg/mL gentamycin (Sigma-Aldrich, St. Louis, MI, USA), and 1 mg/mL collagenase type I (Thermo Fischer Scientific, Waltham, MA, USA)) for 3 h at 37 °C and 30 rpm. Released cells were isolated through a cell strainer (70 µm) (Thermo Fischer Scientific, Waltham, MA, USA), rinsed twice in sterile PBS, supernatant discarded, and the cell pellet resuspended in 24 mL EM supplemented with 50 µg/mL gentamycin. The cells were distributed equally in two T75 cm² culture flasks and cultured at 37 °C in a humidified atmosphere containing 5% CO₂.

After overnight incubation, non-adherent cells were removed and fresh medium added. Medium was changed every 2–3 days. Cells were passaged (P1) at ~80% confluency (10–12 days) using trypsin-EDTA (0.25%) (Thermo Fischer Scientific, Waltham, MA, USA), replating ratio 1:3. P1 cells were further expanded in EM without amphotericin B, supplemented with 50 µg/mL gentamycin (only AT-MSCs). At 80% confluency (8–10 days), cells were detached with trypsin-EDTA, rinsed in sterile PBS, counted, and cryopreserved in FBS supplemented with 10% dimethyl sulfoxide (Sigma-Aldrich, St. Louis, MI, USA) in 1–2 × 10⁶ aliquots. Cryopreserved MSCs (~2 × 10⁶ cells) were thawed (P2) and expanded in two T75 cm² flasks in EM without amphotericin B, supplemented with 50 µg/mL gentamycin (only AT-MSCs). At ~90% confluency (10–12 days), the cells were passaged using trypsin-EDTA (0.25%) and replated in ratio 1:3 (P3). P3 cells at ~90% confluency (5–6 days) were either used for cell differentiation into mesodermal lineages (chondrogenic and osteogenic), biotinylation of cell surface proteins, or RNA isolation.

Cell differentiation into mesodermal lineages

Cells were passaged (P4) to 48-well plates at a density of ~10³ cells/well (9090 cells/cm²) and expanded in

EM without amphotericin B, supplemented with 50 µg/mL gentamycin (only AT-MSCs). At ~80% confluency, cells were washed with sterile PBS and medium was changed to chondrogenic differentiation medium (DMEM 4.5 g/L glucose, without phenol red, supplemented with 1% (v/v) GlutaMAX (Thermo Fischer Scientific, Waltham, MA, USA), 1% (v/v) pyruvate (Thermo Fischer Scientific, Waltham, MA, USA), 2% (v/v) FBS, 1% (v/v) insulin-transferrin-selenium (ITS) (Thermo Fischer Scientific, Waltham, MA, USA), 100 U/mL penicillin and 100 µg/mL streptomycin, 10⁻⁷ M dexamethasone (Sigma-Aldrich, St. Louis, MI, USA), 50 µg/mL ascorbic acid (L-ascorbic acid 2-phosphate) (Sigma-Aldrich, St. Louis, MI, USA), 10 ng/mL TGF-β3 (recombinant human TGF-β3) (R&D Systems, Inc., Minneapolis, MI, USA), and 50 µg/mL gentamycin (only AT-MSCs)) or osteogenic differentiation medium (DMEM 1 g/L glucose, without phenol red, supplemented with 1% (v/v) pyruvate (Thermo Fischer Scientific, Waltham, MA, USA), 2% (v/v) FBS, 1% (v/v) ITS, 100 U/mL penicillin and 100 µg/mL streptomycin, 10⁻⁷ M dexamethasone, 50 µg/mL ascorbic acid (L-ascorbic acid 2-phosphate), 10 µL/mL 1 M β-glycerophosphate (β-glycerophosphate, disodium salt, pentahydrate) (Merck KGaA, Darmstadt, Germany), and 50 µg/mL gentamycin (only AT-MSCs). Differentiation medium was changed every 3 days for 21 days. Confirmation of chondrogenic and osteogenic differentiation was performed by staining for proteoglycans in the extracellular matrix using 0.1% Safranin O, pH 4.6 (Merck KGaA, Darmstadt, Germany) and calcified extracellular matrix deposits using 2% Alizarin red staining, pH 4.2 (Sigma-Aldrich, St. Louis, MI, USA), respectively.

Mesenchymal stromal cell surface biotinylation

Cell surface proteins were biotinylated and isolated according to the manufacturer's protocol (Pierce cell surface protein isolation kit, <https://www.thermofisher.com/order/catalog/product/89881>) with few modifications. In short, EM was removed and cells were washed twice in ice-cold PBS and incubated with a biotin labeling solution for 30 min at 4 °C on a rocking platform. The reaction was quenched with a quenching solution and cells were scraped (cell scraper, Corning Incorporated, Corning, NY, USA) into solution, pooled in a 50 mL conical tube, and washed twice with TBS. Cells were resuspended in lysis buffer supplemented with protease inhibitor (complete protease inhibitor cocktail tablets) (Roche, Basel, Switzerland) 25:1 (v/v), transferred to a 1.5-mL microcentrifuge tube, and incubated on ice 30 min, vortexing every 5 min for 5 s. Cell lysate was centrifuged at 10,000 g for 2 min at 4 °C and the supernatant was transferred to a new tube. The cell lysate was applied to a neutravidin agarose gel column, incubated for 60 min at RT on a rocking platform, and

then centrifuged for 1 min at 1000g. The column was washed with wash buffer supplemented with protease inhibitor (25:1 (v/v)), and centrifuged for 1 min at 1000 g. This step was repeated three times. A 4× Laemmli sample buffer (Bio-Rad Laboratories, Inc., Hercules, CA, USA) with 50 mM dithiothreitol was added to the column, and the reaction was incubated for 60 min at RT on a rocking platform followed by centrifugation for 2 min at 1000 g. The eluate was stored at -80°C until further processing.

SDS-PAGE and in-gel digestion of biotinylated cell surface proteins

Samples were thawed on ice and the proteins in 25 μL 4× Laemmli buffer were reduced by heating for 7 min at 95°C , and further processed by SDS-PAGE (10 well, mini protean TGX gel 4–20%) (Bio-Rad Laboratories, Inc., Hercules, CA, USA) at 180 V for 10 min, to remove lithium dodecyl sulphate from the sample and separate proteins according to molecular weight allowing the proteins to penetrate the resolving gel for approx. 1 cm. After staining with coomassie blue (Sigma-Aldrich, St. Louis, MI, USA), the visible band was excised into small cubes and transferred to individual 1.5 mL microcentrifuge tubes. The gel pieces were washed with 50 mM triethylammonium bicarbonate buffer (TEAB) (Sigma-Aldrich, St. Louis, MI, USA) for 15 min at RT, followed by addition of acetonitrile (Honeywell-Fluka, Morris Plains, NJ, US) in a 1:1 solution with TEAB and incubation for 15 min at RT, removing of all liquids and shrinking of the gel pieces with acetonitrile. These washing steps were repeated four times. Proteins in the gel pieces were reduced and alkylated by incubation with 1.2 μL 0.5 M tris (2-carboxyethyl)phosphine hydrochlorid (Sigma-Aldrich, St. Louis, MI, USA) per 50 μL TEAB and 6 μL 0.5 M chloroacetamide (Sigma-Aldrich, St. Louis, MI, USA) per 50 μL TEAB for 30 min at 37°C followed by a fifth washing sequence. Proteins were digested with 12.5 ng trypsin (Thermo Fischer Scientific, Waltham, MA, USA)/ μL TEAB at 37°C overnight, and the supernatant containing the extracted peptides was transferred to a fresh microcentrifuge tube. The gel pieces were then incubated in 1:20 (v/v) formic acid (Honeywell-Fluka, Morris Plains, NJ, USA) in TEAB for 15 min at RT, the supernatant added to the peptide solution, the gel pieces incubated in acetonitrile for 15 min at RT, and the supernatant transferred to the peptide solution. The peptides were concentrated in a vacuum centrifuge and stored at -80°C until further processing.

LC-MS/MS analysis

Peptides were resuspended in resuspension buffer (2% acetonitrile, 0.1% trifluoroacetic acid (Thermo Fischer Scientific, Waltham, MA, USA), 0.1% formic acid in

MilliQ water) and a volume corresponding to $\sim 1\ \mu\text{g}$ peptide was analyzed by nanoLC-MS/MS (Thermo Scientific Dionex Ultimate 3000 RSLC) coupled in-line to a Thermo Scientific Q Exactive HF mass spectrometer. The peptide separation was accomplished using a precolumn setup (Acclaim PepMap 100 C18 2 cm 100 μm precolumn; 75 μm 75 cm main column) (Thermo Fischer Scientific, Waltham, MA, USA) and a 35-min gradient from 10% buffer B (99.9% acetonitrile) to 35% buffer B and the buffer A being 99.1% MilliQ with 0.1% formic acid. The mass spectrometer was set to acquire MS1 data from m/z 375–1500 at $R=60$ k and MS2 at $R=30$ k allowing up to 20 precursor ions per MS1 scan.

RNA isolation and quantitative real-time reverse transcriptase PCR analysis

Cells were lysed in TRI Reagent (Molecular Research Center, Inc., Cincinnati, OH, USA) and stored at -80°C until further processing. After thawing, the cell lysate was further homogenized through a QIAshredder column (Qiagen, Hilden, Germany) for 2 min at 12,000 g. The homogenate was phase separated by adding 0.2 mL chloroform per mL TRI Reagent, shaken vigorously for 15 s allowing it to stand for 15 min at RT, and centrifuged at 12,000 g for 15 min at 4°C . The upper phase containing the RNA was transferred to a fresh tube. The RNA was precipitated by adding 0.5 mL 2-propanol per mL TRI Reagent, incubation for 8 min at RT, followed by centrifugation at 12,000 g for 8 min at 4°C . After removing the supernatant, the RNA pellet was washed by adding 1 mL 75% ethanol per 1 mL TRI Reagent and centrifugation at 7500 g for 5 min at 4°C . The supernatant was removed, and the pellet was air dried for 5–7 min. The pellet was resuspended in distilled water and incubated for 15 min at 60°C . Total RNA concentration was determined by optical density measurement (NanoDrop™ Spectrophotometer (Thermo Fischer Scientific, Waltham, MA, USA)), and total RNA isolates were kept at -80°C until further processing.

cDNA was synthesized from 200 ng total RNA. Reverse transcriptase PCR mastermix (Promega, Madison, WI, USA) consisted of 5 μL RT buffer, 1.3 μL dNTP mix (10 μM) (Thermo Fischer Scientific, Waltham, MA, USA), 0.25 μL random hexamer primers (2 $\mu\text{g}/\mu\text{L}$) (TAG Copenhagen, Copenhagen, Denmark), 0.25 μL Oligo-dT primers (0.5 $\mu\text{g}/\mu\text{L}$) (TAG Copenhagen, Copenhagen, Denmark), 0.8 μL RNasin® Plus RNase inhibitor (40 U/ μL) (Promega, Madison, WI, USA), 1 μL M-MLV Reverse Transcriptase (200 U/ μL) (Promega, Madison, WI, USA), and sterile water. Reverse transcription was performed in a BIOMETRA® T-Gradient thermocycler (Thermo Fischer Scientific,

Waltham, MA, USA) at 25 °C for 10 min, 42 °C for 60 min, and 95 °C for 5 min. Samples were stored at – 20 °C.

Species-specific intron-spanning equine primers were used to amplify CD29, CD44, CD90, CD105, CD166, CD34, CD45, and CD79a. Primers are listed in Table 1. Primers were purchased from TAG Copenhagen (Copenhagen, Denmark). Quantitative real-time reverse transcriptase PCR was performed in triplicates using the LightCycler® Fast Start DNA Master SYBR Green I and LightCycler® Real-Time PCR System (Roche, Basel, Switzerland). cDNA from equine spleen was used as a positive control.

Data analysis

Raw data was searched against the *Equus caballus* reference sequence database from Uniprot (UP000002281; May 16, 2017; 22,698 proteins) using MaxQuant search engines (MaxQuant v.1.6.0.1 and Perseus v.1.6.0.2). Label-free quantification (LFQ) was based on total ion chromatogram normalization [15]. The online database STRING-DB was used to further identify uncharacterized proteins based on gene [16]. Only proteins with at least two unique peptide sequences and FDR < 1% was included. The MS proteomics data have been deposited and made publically available to the ProteomeXchange Consortium via the PRIDE partner repository with the dataset identifier PXD008884 [17].

Relative mRNA expression was calculated using the efficiency corrected calculation method also known as the Roche Applied Sciences E(efficiency)-method: Normalized relative ratio (NRR) = $E_t^{CT}(\text{target calibrator}) - CT(\text{target sample}) / E_r^{CT}(\text{reference calibrator}) - CT(\text{reference sample})$. All results were normalized to the reference gene gluceraldehyde-3-phosphate dehydrogenase (GAPDH) selected after initial testing of three reference genes (GAPDH, β -actin and ribosomal RNA (18 S)) [18].

Results

Cellular morphology and differentiation into mesodermal lineages

All cell lines were plastic adherent and exhibited a fibroblast-like morphology. Chondrogenic differentiated cells stained positive for proteoglycans in the extracellular matrix and osteogenic differentiated cells stained positive for calcified extracellular matrix deposits on day 21 after induction of differentiation.

MS analysis

A total of 1239 proteins were identified with at least two unique peptide sequences and FDR < 1%. Among the identified proteins were a total of 19 proteins appointed to the CD classification system as potential cell surface targets for immunophenotyping of cells (Tables 2 and 3). The CD proteins were identified in all samples, except CD49c and CD228, which were not identified in the samples from AT-MSCs; CD61, which was not identified in one of the samples from AT-MSCs; CD56, which was not identified in any of the BM-MSCs samples; and CD105, which was not identified in one of the samples from BM-MSCs.

The protein and gene expression pattern for selected MSCs markers

The protein and gene expression pattern was measured for the commonly used positive MSCs markers CD29, CD44, CD90, CD105, and CD166, and negative MSCs markers CD34, CD45, and CD79a.

The mean label-free quantification (LFQ) intensity was above 10^7 for CD29, CD44, CD90, and CD166, with a higher mean LFQ intensity in samples from AT-MSCs compared to BM-MSCs, except for CD29 where the LFQ intensity was higher in the samples from BM-MSCs (Fig. 1a). The cell surface protein CD105 was identified in all AT-MSCs samples, but only in two of the three BM-MSCs samples. The LFQ intensity ranged from

Table 1 Species-specific primers used to amplify specific genes

| Primer name | Forward primer 5'-3' | Reverse primer 5'-3' |
|----------------|---------------------------------|---------------------------------|
| CD29 | GTG AGA TGT GTC AGA CGT GC | AGA ACC AGC AGT CAT CCA CA |
| CD44 | TTC ATA GAA GGG CAC GTG GT | GCC TTT CTT GGT GTA GCG AG |
| CD90 | TCT CCT GCT GAC AGT CTT GC | GGA CCT TGA TGT TGT ACT TGC |
| CD105 | TTC TGG GCC ACT GGT GAA TA | TGC AAT GCA GAC TCG AGA TG |
| CD166 | GCA GAA AAC CAG CTG GAG AG | AGC GAG GAG TAG ACC AAC GA |
| CD34 | CTC CAG CTG TGA GGA CTT TA | AAG TTC TGG ATC CCC ATC CT |
| CD45 | CTC CTC ATT CAC TGC AGA GA | GGT ACT GCT CAA ATG TGG GA |
| CD79a | AGG GAG CCA CAT CAA CAT CA | CGT TGC CTT CCT TAG CTT GG |
| 18 s | GAT ACC GCA GCT AGG AAT | ATC TGT CAA TCC TGT CCG |
| β -actin | CGT GGG CCG CCC TAG GCA CCA | TTG GCC TTA GGG TTC AGG GGG G |
| GAPDH | GGG TGG AGC CAA AAG GGT CAT CAT | AGC TTT CTC CAG GCG GCA GGT CAG |

Table 2 Identified genes and/or proteins appointed to the cluster of differentiation (CD) classification system

| Protein | Alternative protein name | Accession number | Gene name | AT-MSCs1 | AT-MSCs2 | AT-MSCs3 | BM-MSCs1 | BM-MSCs2 | BM-MSCs3 |
|---------|--|------------------|-----------|----------|----------|----------|----------|----------|----------|
| CD29 | Integrin subunit beta 1 | F6UR46 | ITGB1 | +/+ | +/+ | +/+ | +/+ | +/+ | +/+ |
| CD44 | | Q05078 | CD44 | +/+ | +/+ | +/+ | +/+ | +/+ | +/+ |
| CD49a | Integrin subunit alpha 1 | F6SHD8 | ITGA1 | + | + | + | + | + | + |
| CD49c | Integrin subunit alpha 3 | F6W8D8 | ITGA3 | + | + | + | + | + | + |
| CD49d | Integrin subunit alpha 4 | F6ZZX8 | ITGA4 | – | – | – | + | + | + |
| CD49e | Integrin subunit alpha 5 | F6QLZ6 | ITGA5 | + | + | + | + | + | + |
| CD51 | Integrin subunit alpha V | F6W3W7 | ITGAV | + | + | + | + | + | + |
| CD56 | Neural cell adhesion molecule 1 | F7BT93 | NCAM1 | + | + | + | – | – | – |
| CD61 | Integrin subunit beta 3 | F7A370 | ITGB3 | + | + | – | + | + | + |
| CD71 | Transferrin receptor 1 | Q2V905 | TFRC | + | + | + | + | + | + |
| CD73 | Ecto 5' nucleotidase | F6XEP5 | NT5E | + | + | + | + | + | + |
| CD90 | Thy-1 cell surface antigen | F6ZC75 | THY1 | +/+ | +/+ | +/+ | +/+ | +/+ | +/+ |
| CD91 | Alpha-2-macroglobulin receptor | F6Q221 | LRP1 | + | + | + | + | + | + |
| CD105 | Endoglin | F6W046 | ENG | +/+ | +/+ | +/+ | +/+ | –/+ | +/+ |
| CD109 | | F6V1V8 | CD109 | + | + | + | + | + | + |
| CD142 | Tissue factor | F6UIK6 | F3 | + | + | + | + | + | + |
| CD166 | Activated leukocyte cell adhesion molecule | F7B5L3 | ALCAM | +/+ | +/+ | +/+ | +/+ | +/+ | +/+ |
| CD228 | Melanotransferrin | F7DGD6 | MFI2 | – | – | – | + | + | + |
| CD315 | Prostaglandin F2 receptor inhibitor | F6WPE1 | PTGFRN | + | + | + | + | + | + |

Cells are isolated from samples harvested from three different horses (1–3). The cell surface proteins were enriched with biotinylation, and the samples analyzed by mass spectrometry. Raw data was searched against the *Equus caballus* reference sequence database from Uniprot (UP000002281; May 16, 2017; 22,698 proteins) giving information about protein names, accession numbers, and gene names. Gene expression was used to verify the data. (+) indicates that the protein was identified in the sample, (–) indicates that the protein was not identified in the sample. (+/+) indicates identification both on the protein and gene level. (–/+) indicates no identification on the protein level, but identification on the gene level

AT-MSCs adipose tissue-derived mesenchymal stromal cells, BM-MSCs bone marrow-derived mesenchymal stromal cells

4.2×10^6 – 1.7×10^7 (Fig. 1a). The cell surface proteins CD34, CD45, and CD79a were not identified in any of the samples (Fig. 1a).

The relative gene expression ratio for CD29, CD44, and CD90 ranged from 0.06 to 3.14, and for CD105 and CD166, the relative gene expression ratio ranged from 0.002 to 0.014 except for one AT-MSCs sample, where the relative gene expression ratio for CD166 was 0.15. The mean relative gene expression ratios for CD29, CD44, CD90, CD105, and CD166 were higher in AT-MSCs samples compared to BM-MSCs samples. The relative gene expression ratios for CD34, CD45, and CD79a were < 0.0003 in all AT-MSCs and BM-MSCs samples and > 0.05 in the positive control samples.

Discussion

This is the first study in the horse, where the cell surface proteomes of AT-MSCs and BM-MSCs have been analyzed by use of biotinylation of the intact cells to enrich the plasma membrane proteins followed by MS for identification of the proteins with high confidence. This pipeline revealed identification of 1239 proteins including 19 CD markers.

Enrichment procedures like biotinylation aim to increase the relative abundance of proteins of interest, but all accessible proteins in the sample will be labeled with biotin, including intracellular proteins released due to cell death and extracellular proteins. However, the enrichment strategy in this study was considered successful, because the relative number of CD markers compared to the total number of identified proteins was markedly higher than the relative number of CD markers identified in a comparable MS study of equine umbilical cord MSCs without enrichment of the cell surface proteins [19]. Here, a total of 2118 proteins was identified of which only 14 proteins were assigned as CD markers [19].

The 19 identified CD markers included CD29, CD44, CD51, CD71, CD73, CD90, CD105, and CD166, which have also been identified as equine stem cell surface proteins in previous studies [5, 7, 19–21]. CD29, CD44, CD73, CD90, and CD105 are the five positive surface markers included in the ISCT criteria of human MSCs. However, in studies of equine stem cell surface proteins, only CD29 has been robustly positive in equine stem cells, while CD44, CD73, CD90, and CD105 have been identified

Table 3 Cluster of differentiation proteins (CD) identified in equine AT-MSCs and/or equine BM-MSCs and their characteristics in relation to AT-MSCs and BM-MSCs described in the literature

| Protein | Gene name | Characteristics | References |
|---|-----------|--|----------------|
| Identified cluster of differentiation proteins previously reported as present on the surface of equine MSCs | | | |
| CD29 | ITGB1 | Consistently observed equine MSCs surface protein. Positive human MSCs surface marker according to ISCT | [5, 7, 19, 21] |
| CD44 | CD44 | Inconsistently observed equine MSCs surface marker. Positive human MSCs surface marker according to ISCT | [5, 7, 19, 21] |
| CD51 | ITGAV | Identified on the surface of MSCs derived from equine peripheral blood and AT. Human endothelial cell marker. Upregulated in mouse BM-MSCs during osteoblastic differentiation | [20] |
| CD71 | TFRC | Identified on MSCs derived from equine umbilical cord intervacular matrix | [19] |
| CD73 | NT5E | Inconsistently observed equine MSCs surface marker. Positive human MSCs surface marker according to ISCT | [22] |
| CD90 | THY1 | Inconsistently observed equine MSCs surface marker. Positive human MSCs surface marker according to ISCT | [5, 7, 19, 21] |
| CD105 | ENG | Inconsistently observed equine MSCs surface marker. Positive human MSCs surface marker according to ISCT | [7, 19, 21] |
| CD166 | ALCAM | Identified on MSCs derived from equine umbilical cord intervacular matrix | [19] |
| Identified cluster of differentiation proteins previously reported as present on the surface of human MSCs | | | |
| CD49a | ITGA1 | BM mononuclear stem cell marker for multipotency | [25, 26] |
| CD49c | ITGA3 | Potential predictive stem cell marker for BM-MSCs and AT-MSCs | [27, 28] |
| CD49d | ITGA4 | AT-MSCs surface protein sensitive for cryopreservation | [30] |
| CD49e | ITGA5 | Part of the expression profile of AT-MSCs | [28, 29] |
| CD56 | NCAM1 | Negative marker for AT-MSCs | [31] |
| CD109 | CD109 | Identified on MSCs derived from equine umbilical cord intervacular matrix | [32, 33] |
| CD142 | F3 | Stem cell surface protein, but not specific to MSCs | [34] |
| Identified cluster of differentiation proteins that have not previously been described in the literature in relation to AT-MSCs or BM-MSCs neither in human nor horse | | | |
| CD61 | ITGB3 | Have not previously been described in the literature in relation to AT-MSCs or BM-MSCs neither in human or horse | |
| CD91 | LRP1 | Have not previously been described in the literature in relation to AT-MSCs or BM-MSCs neither in human or horse | |
| CD228 | MF12 | Have not previously been described in the literature in relation to AT-MSCs or BM-MSCs neither in human or horse | |
| CD315 | PTGFRN | Have not previously described in the literature studied in relation to AT-MSCs or BM-MSCs neither in human or horse | |

AT-MSCs adipose tissue-derived mesenchymal stromal cells, BM-MSCs bone marrow-derived mesenchymal stromal cells, ISCT International Society for Cellular Therapy

with different expression patterns [5, 7, 19, 21, 22]. The inconsistent findings of CD105 on the surface of equine stem cells [7, 21, 22] were supported by the observations in this study, but the other four human ISCT-positive surface markers were identified with high confidence.

CD51 has been identified on the surface of MSCs derived from equine peripheral blood and AT [20] and CD71 in the proteome from MSCs derived from equine umbilical cord [19]. CD51 is known to be an endothelial cell marker and has been shown to be upregulated in mouse BM-MSCs during osteoblastic differentiation, suggesting a putative role in osteogenesis [20]. The role of CD51 and CD71 in equine MSCs is not clearly known, and further studies are required to establish them as stem

cell markers. Stem cells should lack expression of CD45, CD34, and CD79a, and these proteins were not observed in the MS analysis of the enriched MSCs samples. Equine CD34 and CD45 have been identified in a previous comprehensive MS analysis of different equine tissues and body fluids [23], showing that the proteins can be identified using MS. Since CD34 and CD45 were not identified in this study, our findings support their capacity as true negative identifiers. To our knowledge, equine CD79a has never been identified by MS analysis. Identification of this protein in another cell type is needed to confirm that this is a true negative identifier for MSCs in MS studies.

Multiple factors have been suggested to explain the variable expression pattern of equine stem cell surface

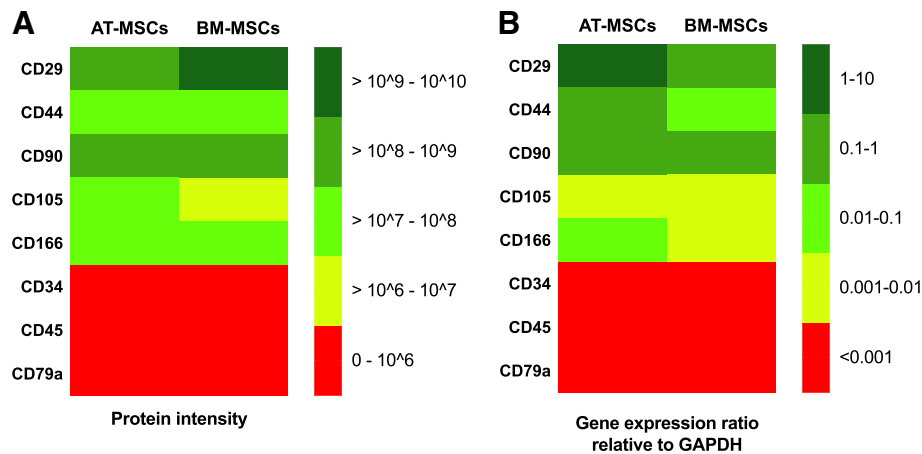


Fig. 1 Heat maps showing the uniformity of the protein expression pattern (a) and gene expression pattern (b) in samples from equine adipose tissue-derived mesenchymal stromal cells (AT-MSCs) and bone marrow-derived mesenchymal stromal cells (BM-MSCs), for the commonly used positive mesenchymal stromal cell markers CD29, CD44, CD90, CD105, and CD166, and negative mesenchymal stromal cell markers CD34, CD45, and CD79a. The protein expression pattern is given by the mean of the label free quantification intensity measured in samples from three individuals. The gene expression pattern is given by the mean of the gene expression relative to GAPDH in samples from three individuals

markers, for example differences in culture conditions and timeframes [5], distinct surface antigens for MSCs of different origin [22], and even individual differences between donors [22]. Another challenge often encountered in equine research is the lack of suitable antibodies of high quality and consistent performance across different laboratories [5, 7]. In this study, we employed two technologies that do not rely on antibodies as alternatives to immunophenotyping: MS to identify relevant proteins, and qPCR to identify relevant genes. Mass spectrometry has the advantage of identifying the markers at protein and peptide level being independent of protein antibodies for specific identification [23, 24]. However, this technology is still reserved for specialized proteomic core facilities, and its applicability for more general use is therefore limited. qPCR is a more commonly available technology. Radcliffe et al. [5] studied the temporal expression of CD29, CD44, CD90, CD11a/CD18, and CD45RB, both at the mRNA and protein level. They found that at all culture points tested, the gene mRNA expression followed the same pattern as the cellular protein expression. The uniformity between mRNA and protein expression patterns was supported by the observations of this study in terms of both expression pattern and positive and negative identifiers. Taken together, the results of these studies emphasize that gene expression analysis on mRNA might be of great value for identification of equine MSCs and as a method to verify findings on protein level, especially when suitable antibodies are lacking.

To our knowledge, this is the first study to identify CD49a, CD49c, CD49d, CD49e, CD56, CD61, CD91, CD109, CD142, CD166, CD228, and CD315 in equine

MSCs. The majority of these proteins have been reported to be present on the surface of human AT-MSCs and BM-MSCs. In humans, CD49a proved useful as a positive marker for the most multipotent cells from a heterogeneous pool of BM mononuclear stem cells [25]. However, selection for CD49a-positive cells in a AT-MSCs population showed only a minor advantage to reduce heterogeneity [26]. In an attempt to identify chondrogenic potency predictors prior to chondrogenic differentiation of human BM-MSCs and AT-MSCs, it was demonstrated that CD49c was positively associated with GAG quantitation [27]. In another study of human BM-MSCs, the expression level of CD49c and CD49e was found to decrease after induction of chondrogenic differentiation in the presence of TGF- β 3 [28], which suggests that CD49c may be a predictive stem cell marker in humans. CD49e has also been identified as part of the expression profile of human AT-MSCs although less than 28% of the cells were positive for this marker [29]. The expression of CD49d on human AT-MSCs was found to decrease after cryopreservation and thawing even though the immunophenotypic marker expression was largely preserved, and their multipotency was maintained [30]. We also observed a lack of CD49d in AT-MSCs, but further investigation is needed to state if this is related to the phenotype. CD56 was observed in all AT-MSCs samples from horses and absent in all BM-MSCs samples. Human AT-MSCs have shown a variable positivity for CD56, and it is generally considered a negative marker for human AT-MSCs [31]. The diverging results could be due to different biological characteristics of this protein across species. In humans, CD109 and CD142 have been identified as stem cell surface proteins,

but their presence has not been specific to the MSCs phenotype [32–34].

CD61, CD91, CD228, and CD315 have not previously been studied in relation to AT-MSCs and BM-MSCs either in human or horse. Further investigation and validation will be needed to test the immunological characterization of these proteins in the horse and determine their value as equine MSCs surface markers.

Conclusions

In conclusion, the findings of this study show that enrichment of the MSCs surface proteome by biotinylation followed by MS analysis is a valuable alternative to immunophenotyping of surface markers, when suitable antibodies are not available. Furthermore, the method is very useful for mining of the cell surface proteome to identify potential additional equine stem cell markers. Furthermore, the results support using gene expression analysis to verify the data by another method, and as a valuable alternative to immunophenotyping for identification of specific MSCs markers.

Abbreviations

AT: Adipose tissue; BM: Bone marrow; CD: Cluster of differentiation; DMEM: Dulbecco's modified Eagle's medium; EM: Expansion medium; FBS: Fetal bovine serum; ISCT: International Society for Cellular Therapy; LFQ: Label free quantification; MS: Mass spectrometry; MSCs: Mesenchymal stromal cells; TEAB: Triethylammonium bicarbonate buffer

Funding

Funding was generously provided by Independent Research Fund Denmark (grant number FTP-1335-00133) to cover the project expenses. The Danish National Mass Spectrometry Platform for Functional Proteomics (PRO-MS), the Obel Family Foundation, and the Svend Andersen Foundation are acknowledged for grants to the analytical platform enabling parts of this study.

Availability of data and materials

The mass spectrometry proteomics data generated during the current study are available in the ProteomeXchange Consortium via the PRIDE partner repository with the dataset identifier PXD008884.

Authors' contributions

LB designed the study; harvested the MSCs; performed most of the work with the cell cultures, biotinylation, sample preparation for MS analysis, qPCR analysis, and the data interpretation; and wrote the manuscript. AS provided expert assistance with sample preparation for MS analysis, MS analysis, and data interpretation, and revised the manuscript. KJE assisted with optimization of the protocol for preparation of the samples for MS analysis, assisted with the MS analyses, and revised the manuscript. LCB designed the study, provided expert assistance with harvesting and culturing the MSCs and qPCR analysis of the MSCs gene expression, and revised the manuscript. All authors read and approved the final manuscript.

Ethics approval and consent to participate

The experimental protocol was approved by the Ethics and Welfare Committee of Department of Veterinary Clinical Sciences, University of Copenhagen, and all procedures were carried out according to the Danish Act on animal experiments.

Consent for publication

Not applicable.

Competing interests

The authors declare that they have no competing interests.

Publisher's Note

Springer Nature remains neutral with regard to jurisdictional claims in published maps and institutional affiliations.

Author details

¹Department of Veterinary Clinical Sciences, University of Copenhagen, Agrovvej 8, DK-2630 Taastrup, Denmark. ²Department of Health Science and Technology, Aalborg University, Fredrik Bajers Vej 7, 9220 Aalborg Ø, Denmark.

Received: 25 March 2018 Revised: 4 October 2018

Accepted: 8 October 2018 Published online: 25 October 2018

References

1. McIlwraith CW, Frisbie DD, Rodkey WG, Kisiday JD, Werpy NM, Kawcak CE, Steadman JR. Evaluation of intra-articular mesenchymal stem cells to augment healing of microfractured chondral defects. *Arthroscopy*. 2011;27:1552–61.
2. Ferris DJ, Frisbie DD, Kisiday JD, McIlwraith CW, Hague BA, Major MD, Schneider RK, Zubrod CJ, Kawcak CE, Goodrich LR. Clinical outcome after intra-articular administration of bone marrow derived mesenchymal stem cells in 33 horses with stifle injury. *Vet Surg*. 2014;43:255–65.
3. Dominici M, Le Blanc K, Mueller I, Slaper-Cortenbach I, Marini F, Krause D, Deans R, Keating A, Prockop D, Horwitz E. Minimal criteria for defining multipotent mesenchymal stromal cells. The International Society for Cellular Therapy position statement. *Cytotherapy*. 2006;8:315–7.
4. Guest DJ, Ousey JC, Smith MR. Defining the expression of marker genes in equine mesenchymal stromal cells. *Stem Cells Cloning*. 2008;1:1–9.
5. Radcliffe CH, Flaminio MJ, Fortier LA. Temporal analysis of equine bone marrow aspirate during establishment of putative mesenchymal progenitor cell populations. *Stem Cells Dev*. 2010;19:269–82.
6. De Schauwer C, Meyer E, Van de Walle GR, Van Soom A. Markers of stemness in equine mesenchymal stem cells: a plea for uniformity. *Theriogenology*. 2011;75:1431–43.
7. De Schauwer C, Piepers S, Van de Walle GR, Demeyere K, Hoogewijs MK, Govaere JL, Braeckmans K, Van Soom A, Meyer E. In search for cross-reactivity to immunophenotype equine mesenchymal stromal cells by multicolor flow cytometry. *Cytometry A*. 2012;81:312–23.
8. Ibrahim S, Saunders K, Kydd JH, Lunn DP, Steinbach F. Screening of anti-human leukocyte monoclonal antibodies for reactivity with equine leukocytes. *Vet Immunol Immunop*. 2007;119:63–80.
9. Riis S, Stensballe A, Emmersen J, Pennisi CP, Birkelund S, Zachar V, Fink T. Mass spectrometry analysis of adipose-derived stem cells reveals a significant effect of hypoxia on pathways regulating extracellular matrix. *Stem Cell Res Ther*. 2016;7:52.
10. Belleannec C, Belghazi M, Labas V, Teixeira-Gomes AP, Gatti JL, Dacheux JL, Dacheux F. Purification and identification of sperm surface proteins and changes during epididymal maturation. *Proteomics*. 2011;11:1952–64.
11. Kasvandik S, Sillaste G, Velthut-Meikas A, Mikelsaar AV, Hallap T, Padrik P, Tenson T, Jaakma U, Koks S, Salumets A. Bovine sperm plasma membrane proteomics through biotinylation and subcellular enrichment. *Proteomics*. 2015;15:1906–20.
12. Niehage C, Karbanova J, Steenblock C, Corbeil D, Hoflack B. Cell surface proteome of dental pulp stem cells identified by label-free mass spectrometry. *PLoS One*. 2016;11:e0159824.
13. Niehage C, Steenblock C, Pursche T, Bornhauser M, Corbeil D, Hoflack B. The cell surface proteome of human mesenchymal stromal cells. *PLoS One*. 2011;6:5.
14. Lee SK, Kim JH, Kim SS, Kang T, Park NH, Kwon KH, Lee SS, Lee ZW, Suh-Kim H, Cho K, et al. Profiling and semiquantitative analysis of the cell surface proteome in human mesenchymal stem cells. *Anal Bioanal Chem*. 2013;405:5501–17.
15. Cox J, Hein MY, Luber CA, Paron I, Nagaraj N, Mann M. Accurate proteome-wide label-free quantification by delayed normalization and maximal peptide ratio extraction, termed MaxLFQ. *Mol Cell Proteomics*. 2014;13:2513–26.
16. Szklarczyk D, Morris JH, Cook H, Kuhn M, Wyder S, Simonovic M, Santos A, Doncheva NT, Roth A, Bork P, et al. The STRING database in 2017: quality-controlled protein-protein association networks, made broadly accessible. *Nucleic Acids Res*. 2017; 45:D362–8.

17. Vizcaino JA, Csordas A, Del-Toro N, Dianas JA, Griss J, Lavidas I, Mayer G, Perez-Riverol Y, Reisinger F, Ternent T, et al. 2016 update of the PRIDE database and its related tools. *Nucleic Acids Res.* 2016;44:11033.
18. Andersen CL, Jensen JL, Orntoft TF. Normalization of real-time quantitative reverse transcription-PCR data: a model-based variance estimation approach to identify genes suited for normalization, applied to bladder and colon cancer data sets. *Cancer Res.* 2004;64:5245–50.
19. Maia L, de Moraes CN, Dias MC, Martinez JB, Caballol AO, Testoni G, de Queiroz CM, Pena RD, Landim-Alvarenga FC, de Oliveira E. A proteomic study of mesenchymal stem cells from equine umbilical cord. *Theriogenology.* 2017;100:8–15.
20. Dhar M, Neilsen N, Beatty K, Eaker S, Adair H, Geiser D. Equine peripheral blood-derived mesenchymal stem cells: isolation, identification, trilineage differentiation and effect of hyperbaric oxygen treatment. *Equine Vet J.* 2012;44:600–5.
21. Ranera B, Lyahyai J, Romero A, Vazquez FJ, Remacha AR, Bernal ML, Zaragoza P, Rodellar C, Martin-Burriel I. Immunophenotype and gene expression profiles of cell surface markers of mesenchymal stem cells derived from equine bone marrow and adipose tissue. *Vet Immunol Immunop.* 2011;144:147–54.
22. Paebst F, Piehler D, Brehm W, Heller S, Schroeck C, Tarnok A, Burk J. Comparative immunophenotyping of equine multipotent mesenchymal stromal cells: an approach toward a standardized definition. *Cytometry A.* 2014;85:678–87.
23. Bundgaard L, Jacobsen S, Sorensen MA, Sun Z, Deutsch EW, Moritz RL, Bendixen E. The Equine PeptideAtlas - a resource for developing proteomics-based veterinary research. *Proteomics.* 2014;14:763–73.
24. Hesselager MO, Codrea MC, Sun Z, Deutsch EW, Bennike TB, Stensballe A, Bundgaard L, Moritz RL, Bendixen E. The Pig PeptideAtlas: a resource for systems biology in animal production and biomedicine. *Proteomics.* 2016;16:634–44.
25. Rider DA, Nalathamby T, Nurcombe V, Cool SM. Selection using the alpha-1 integrin (CD49a) enhances the multipotentiality of the mesenchymal stem cell population from heterogeneous bone marrow stromal cells. *J Mol Histol.* 2007;38:449–58.
26. Griesche N, Luttmann W, Luttmann A, Stammermann T, Geiger H, Baer PC. A simple modification of the separation method reduces heterogeneity of adipose-derived stem cells. *Cells Tissues Organs.* 2010;192:106–15.
27. Garcia J, Mennan C, McCarthy HS, Roberts S, Richardson JB, Wright KT. Chondrogenic potency analyses of donor-matched chondrocytes and mesenchymal stem cells derived from bone marrow, infrapatellar fat pad, and subcutaneous fat. *Stem Cells Int.* 2016;2016:6969726.
28. Lee HJ, Choi BH, Min BH, Park SR. Changes in surface markers of human mesenchymal stem cells during the chondrogenic differentiation and dedifferentiation processes in vitro. *Arthritis Rheum.* 2009;60:2325–32.
29. Gronthos S, Franklin DM, Leddy HA, Robey PG, Storms RW, Gimple JM. Surface protein characterization of human adipose tissue-derived stromal cells. *J Cell Physiol.* 2001;189:54–63.
30. Irioda AC, Cassilha R, Zocche L, Francisco JC, Cunha RC, Ferreira PE, Guarita-Souza LC, Ferreira RJ, Mogharbel BF, Garikipati VN, et al. Human adipose-derived mesenchymal stem cells cryopreservation and thawing decrease alpha4-integrin expression. *Stem Cells Int.* 2016;2016:2562718.
31. Blasi A, Martino C, Balducci L, Saldarelli M, Soletti A, Navone SE, Canzi L, Cristini S, Invernici G, Parati EA, Alessandri G. Dermal fibroblasts display similar phenotypic and differentiation capacity to fat-derived mesenchymal stem cells, but differ in anti-inflammatory and angiogenic potential. *Vasc Cell.* 2011;3:5.
32. Giesert C, Marxer A, Sutherland DR, Schuh AC, Kanz L, Buhring HJ. Antibody W7C5 defines a CD109 epitope expressed on CD34+ and CD34- hematopoietic and mesenchymal stem cell subsets. *Ann N Y Acad Sci.* 2003;996:227–30.
33. Zhou S, Cecere R, Philip A. CD109 released from human bone marrow mesenchymal stem cells attenuates TGF-beta-induced epithelial to mesenchymal transition and stemness of squamous cell carcinoma. *Oncotarget.* 2017;8:95632–47.
34. Christy BA, Herzog MC, Montgomery RK, Delavan C, Bynum JA, Reddoch KM, Cap AP. Procoagulant activity of human mesenchymal stem cells. *J Trauma Acute Care Surg.* 2017;83:S164–9.

Ready to submit your research? Choose BMC and benefit from:

- fast, convenient online submission
- thorough peer review by experienced researchers in your field
- rapid publication on acceptance
- support for research data, including large and complex data types
- gold Open Access which fosters wider collaboration and increased citations
- maximum visibility for your research: over 100M website views per year

At BMC, research is always in progress.

Learn more biomedcentral.com/submissions

