



**AALBORG UNIVERSITY**  
DENMARK

**Aalborg Universitet**

## **Codend selectivity in a Commercial Danish anchor seine**

Noack, Thomas; Frandsen, Rikke Petri; Krag, Ludvig Ahm; Mieske, Bernd; Madsen, Niels

*Published in:*  
Fisheries Research

*DOI (link to publication from Publisher):*  
[10.1016/j.fishres.2016.10.006](https://doi.org/10.1016/j.fishres.2016.10.006)

*Creative Commons License*  
CC BY-NC-ND 4.0

*Publication date:*  
2017

*Document Version*  
Accepted author manuscript, peer reviewed version

[Link to publication from Aalborg University](#)

*Citation for published version (APA):*  
Noack, T., Frandsen, R. P., Krag, L. A., Mieske, B., & Madsen, N. (2017). Codend selectivity in a Commercial Danish anchor seine. *Fisheries Research*, 186(Part 1), 283-291. <https://doi.org/10.1016/j.fishres.2016.10.006>

### **General rights**

Copyright and moral rights for the publications made accessible in the public portal are retained by the authors and/or other copyright owners and it is a condition of accessing publications that users recognise and abide by the legal requirements associated with these rights.

- Users may download and print one copy of any publication from the public portal for the purpose of private study or research.
- You may not further distribute the material or use it for any profit-making activity or commercial gain
- You may freely distribute the URL identifying the publication in the public portal -

### **Take down policy**

If you believe that this document breaches copyright please contact us at [vbn@aub.aau.dk](mailto:vbn@aub.aau.dk) providing details, and we will remove access to the work immediately and investigate your claim.

# 1 Codend selectivity in a commercial Danish

## 2 anchor seine

3 Thomas Noack<sup>1\*</sup>, Rikke P. Frandsen<sup>1</sup>, Ludvig A. Krag<sup>1</sup>, Bernd Mieske<sup>2</sup>, Niels  
4 Madsen<sup>3</sup>

5 <sup>1</sup>*Technical University of Denmark, National Institute of Aquatic Resources, North Sea Science Park, PO Box 101,*  
6 *DK-9850 Hirtshals, Denmark*

7 <sup>2</sup>*Thünen-Institute of Baltic Sea Fisheries, Alter Hafen Süd 2, 18069 Rostock, Germany*

8 <sup>3</sup>*Section of Biology and Environmental Science, Department of Chemistry and Bioscience, Aalborg University,*  
9 *Fredrik Bajers Vej 7, 9220 Aalborg, Denmark.*

10 <sup>\*</sup>*Corresponding author: tel: +45 35 88 32 51; email: thno@aqua.dtu.dk*

### 11 Abstract

12 Danish seining (or anchor seining) is a fishing technique that is gaining increasing attention because it is  
13 considered to be a fuel-efficient fishing method with low environmental impact. However, scientific  
14 documentation of the selectivity characteristics of Danish seines is lacking, and the gear generally is  
15 grouped with bottom trawls and Scottish seines in fisheries management legislation. In this study, we  
16 developed a codend cover to estimate the selectivity of a standard commercial Danish seine codend for  
17 four fish species. The data for the dominant species, dab (*Limanda limanda*) and plaice (*Pleuronectes*  
18 *platessa*), was best described by models that combine two or three logistic models, which indicated that  
19 more than one selection process was at work. Selectivity of cod (*Gadus morhua*) was best described by  
20 a Richard curve and selectivity of red gurnard (*Chelidonichthys lucernus*) by a logistic curve. The  
21 estimated selectivity curve of dab indicated, contrary to cod and plaice, low retention of individuals  
22 below MLS. Confidence limits for larger length classes of cod and red gurnard were relatively wide. For  
23 plaice, the estimated selection factor, which is the length with 50% retention divided by mesh size, was  
24 comparable to literature values from trawl studies. The average value for cod was similar for Danish and  
25 Scottish seines, but lower for trawls. The results are discussed in the context of fisheries management  
26 with focus on the landing obligation of the new Common Fisheries Policy.

27 Keywords: Demersal seining, Discard ban, Landing obligation, Multiple selection, Selectivity  
28 modelling, Skagerrak

## 29 **1. Introduction**

30 Although a decline in the number of seiners in Denmark is evident (1990: 252; 2000: 118; 2015:  
31 32; EuroStat, 2016), Danish seining is still an important fishing technique. In recent years, interest in  
32 Danish seining has increased because it is viewed as a fuel-efficient fishing method (Thrane, 2004) and  
33 because its environmental impacts are said to be less than those of other active demersal fishing gears  
34 such as beam trawls or bottom trawls (ICES, 2006, 2010; Suuronen et al., 2012; Eigaard et al., 2015).  
35 The main target species of Danish seiners in Skagerrak and the North Sea are flatfish, primarily plaice  
36 (*Pleuronectes platessa*), which has been within safe biological limits for the last three years (ICES,  
37 2015). Nevertheless, there is a general lack of scientific documentation of the selectivity of Danish  
38 seines. The sparse existing data (e.g. ICES, 2010; Suuronen et al., 2012) are often based on assumptions  
39 or older studies, where other regulations existed, different gears or vessels were used or where data were  
40 not analysed following the standards described in Wileman et al. (1996).

41 A new Common Fisheries Policy that includes a landing obligation (discard ban) system was  
42 introduced in most European Union (EU) waters, including Skagerrak and the North Sea, by 1 January  
43 2016 (EEC, 2011, 2012; Condie et al., 2014b; Condie et al., 2014a; Eliassen, 2014; Uhlmann et al., 2014;  
44 Sardà et al., 2015). The specific challenge for the industry, and the major difference from the earlier  
45 landing quota system is that the catch of all sizes of listed species is counted against the quota. A  
46 minimum conservation reference size (MCRS, generally equal to current minimum landing size, MLS)  
47 will be introduced for several commercial species and individuals below this size are prohibited from  
48 being sold for direct human consumption. Consequently, information about the selective properties of  
49 fishing gears is of great importance for the economy and fisheries management as selectivity parameters  
50 like L50 (length at which 50% of the fish are retained) and SR (selection range; L75–L25,) give an  
51 indication of which sizes of fish can be expected by the fishery. This information is important to estimate

52 the probability that the fisheries will adhere the objectives of the landing obligation. Furthermore, if the  
53 expectations of the landing obligation are too high (e.g. due to high bycatches of fish below MCRS), the  
54 data may allow for recommendations to be made on how to adjust the fisheries to the new system.

55 By EU law, Danish seines belong to the same legislative category of fishing gears as Scottish  
56 seines and bottom trawls. All three gears follow the same technical regulations such as mesh size and  
57 selective devices. Several older studies regarding selectivity of Scottish seines exist (Reeves et al., 1992;  
58 Isaksen and Lokkeborg, 1993) but the overall state of knowledge is low. A recent theoretical study by  
59 Herrmann et al. (2015) estimated the selectivity of Scottish seines on the basis of one of those earlier  
60 studies using suitable statistical methods. Nevertheless, they concluded that further studies have to be  
61 conducted using currently used demersal seines. The understanding of selectivity in bottom trawls is  
62 much greater as the majority of selectivity studies for gears from this legislative category focused on  
63 trawls (e.g. Reeves et al., 1992; Graham et al., 2004; Frandsen et al., 2010b; Madsen et al., 2012).

64 Although the netting materials and codend constructions used in Danish seines, Scottish seines,  
65 and bottom trawls are similar, the gears have pronounced differences in construction and in the way they  
66 are operated. Bottom trawls use trawl doors to spread the net (von Brandt, 2005), and the towing speed  
67 is relatively constant throughout the fishing process. Seiners do not use any doors or other spreading  
68 devices, and the speed at which the net is dragged is slower than that in trawling, but it continuously  
69 increases during the fishing process. Scottish seiners move forward during the retrieval process, whereas  
70 Danish seiners do not as they are anchored (von Brandt, 2005). With such pronounced differences in  
71 towing speed and net geometry during the fishing process, it is likely that the selection processes differ  
72 among the three types of gears.

73 Due to the lack of consistent forward motion in Danish seines, it is important to develop a cover  
74 based on the principles of the conventional codend cover (Wileman et al., 1996) to study the selectivity  
75 of this type of gear. Such a device must cope with the different stages of the fishing process and always  
76 keep the cover a sufficient distance away from the codend to avoid a potential masking effect that can  
77 occur when the cover comes in contact with the meshes of the codend (Madsen and Holst, 2002).

78           The main objective of this study was to estimate the selectivity parameters for species caught  
79 with Danish seines using the codend design currently used in the commercial fishery. These selectivity  
80 parameters were compared to those of bottom trawls and Scottish seines, and the results should prove  
81 useful in terms of technical regulations and management policies. The data will also be used to evaluate  
82 the gear in terms of the landing obligation and to estimate the potential consequences for the Danish  
83 seine and bottom trawl sector now, and in the future, should other species be added to the landing  
84 obligation list.

## 85   **2. Materials and Methods**

### 86   *2.1. Study site and experimental setup*

87           The experiments were carried out aboard the commercial Danish seiner HG 35 *Vendelbo* (length  
88 overall: 15.47 m, engine power: 91 kW) off the coast of Denmark in Skagerrak (ICES area IIIa; Fig. 1)  
89 in August and September 2014. The fishing took place in sandy shallow areas close to the coast (~13 m  
90 deep, Hauls 1, 2, 3, 6, 7) that are known to be good grounds for flatfish such as plaice and in deeper  
91 grounds (~68 m deep, Hauls 4 and 5) that are known to be good for roundfish such as haddock  
92 (*Melanogrammus aeglefinus*).

93           The vessel's commercial gear was used, which was representative for the Danish seining fleet  
94 that operates in Skagerrak and the North Sea. The seine had 380 meshes (nominal mesh size: 120 mm)  
95 around the fishing circle, and it consisted of a wing section with a weighted 43.6 m long ground rope, a  
96 belly section, and an extension section. The 7 m long non-tapered codend was made of Nymflex 4 mm  
97 double twine polyethylene (PE) netting (mesh size:  $124.4 \pm 3.0$  mm, N = 200, measured with an OMEGA  
98 gauge (Fonteyne et al., 2007)) with 97 open meshes around the circumference. The codend was  
99 constructed with one selvedge that included three meshes, following commercial practice. Although  
100 scientific selectivity studies are normally carried out with newly produced codends without additional  
101 devices (e.g., round straps, protecting bags, or flappers) that could affect selectivity, the codend in this

102 study was equipped with two round straps (Fig. 2; Herrmann et al., 2006). These two round straps were  
103 1.9 m in circumference and mounted 0.5 m ahead of the codline and 2.9 m in circumference and mounted  
104 1.0 m ahead of the codline. Round straps are widely used by commercial vessels to limit a codend's  
105 circumference just in front of the codline to facilitate fast and more controlled emptying of the codend  
106 aboard the vessel, which is thought to improve safety for fishermen handling the gear. However, small  
107 variations of the specific mounting of these round straps may occur between vessels. Legal regulations  
108 regarding round straps are stated in EU regulation 3440/84. The seine warps used in the current trials  
109 were ~2860 m long (13 coils), each with a diameter of 21 mm.

110 The covered codend method (Wileman et al., 1996) was applied to catch individuals escaping  
111 from the codend. The actual cover was 21 m long and consisted of two main parts (part C and D, Fig. 2),  
112 but two additional pieces of netting (part A and B, Fig. 2) were necessary to attach the cover appropriately  
113 to the extension part of the seine. The 11 m long part C covered the codend and was made of 0.9 mm  
114 thin knotless Dyneema (ultra-high molecular weight PE) twine netting in square mesh orientation (mesh  
115 size:  $46.2 \pm 3.0$  mm) to ensure good water flow through the meshes and a low visibility of the netting in  
116 order to not affect the escape behaviour of the fish. Furthermore, this configuration allowed the meshes  
117 to stay in a fixed position and thus maintain a sufficient opening and distance between codend and cover  
118 in order to minimize the risk of masking the codend (Madsen et al., 2001). This part consisted of four  
119 panels and had 620 mesh bars in circumference (155 per panel). The 10 m long aft part D was made of  
120 2 mm knotless PE netting (mesh size:  $40.8 \pm 0.7$  mm) in diamond orientation. It consisted of two panels  
121 and the number of meshes per panel decreased from 175 in the front to 145 meshes per panel in the end.  
122 Three kites, consisting of two PVC-coated trapezoidal canvas parts (ca.  $0.5$  m<sup>2</sup> per trapezoid) as  
123 described by Madsen et al. (2001) were attached to the cover to ensure that it remained open during faster  
124 hauling speeds (Figs. 2 and 3). One kite was attached to each of the starboard panel, the portside panel  
125 and the top panel (Figs. 2 and 3). Because Danish seines are dragged at a slower speed than trawls,  
126 especially in the beginning of the fishing process, several modifications were made to the cover design  
127 described in Madsen et al. (2001). These were made to ensure that the cover did not mask the codend

128 (Madsen and Holst, 2002) at the low dragging speed. Twenty-four egg-shaped floats (buoyancy: 0.2 kg)  
129 were attached along each upper selvedge of the front part, and lead ropes (1 kg/m) were attached to the  
130 lower panel (Figs. 2 and 3). Additionally, a 1.9 m long PE bar was fixed transversally across the upper  
131 panel at the point where the kites have been attached (Figs. 2 and 3). This ensured the cover to spread  
132 horizontally and thus allowed sufficient horizontal space between the codend and cover when the gear  
133 was not moving or was moving very slowly. This minimized the risk of masking. Finally, a ca. 10 m  
134 long zipper was inserted in the top panel of part C to allow handling the codend catch first in order to  
135 prevent escapes of fish from the codend into the cover at the surface (Fig. 2). Adjustment and inspection  
136 of the cover were conducted in a flume tank (SINTEF, Hirtshals, Denmark) prior to the experiments,  
137 with participation of scientists, fishermen, and the net maker who created the cover. Velocities from 0 to  
138 1.8 kn (0.9 m/s), equivalent to the speed of the seine when the majority of fish enter the codend  
139 (unpublished data, Thomas Noack, DTU Aqua Hirtshals, Denmark), were tested. As the length of the  
140 cover exceeded the flume tank's dimensions, the last part of the cover was bundled for the tests. By doing  
141 so, it was still possible to judge and adjust the modifications around the codend (lead ropes, floats, kites,  
142 PE bar) in an appropriate way.

## 143 *2.2. Data collection and sampling strategy*

144 For each haul, fishing time, depth at the position where the net was deployed, depth at anchor  
145 and the sea state were recorded following the protocol of Wileman et al. (1996). A GPS-logger (Canmore  
146 G-PORTER GP-102+) tracked the vessel's movement over the entire fishing process for each haul.

147 When the catch came aboard the vessel, the codend was emptied first to avoid any fish escaping  
148 from the codend into the cover. In order to do so, the cover was tightened up to a level that allowed for  
149 a proper opening of the zipper without risking any fish to swim or fall out. As soon as this level was  
150 reached, the codend was pulled out of the cover. With the exception of the first haul in which the whole  
151 catch was sorted prior to subsampling, subsamples were taken from the non-sorted catch due to large  
152 amounts of fish (as outlined by Gerritsen and McGrath (2007)). After sorting and identifying species,

153 fish were measured to the nearest cm. Individual weights were estimated using length-weight  
154 relationships (Shanks, 1981; Coull et al., 1989; Marčeta, 2013).

155 During the second haul, two underwater video cameras (GoPro, Inc. HERO 3+) were mounted  
156 between the cover and codend (pointing downstream and upstream) to document the performance of the  
157 cover and the behaviour of the fish in the gear during the fishing process.

### 158 2.3. Data analysis

159 Selectivity modelling was conducted to estimate species-specific selectivity curves and  
160 selectivity parameters (e.g., L50 and SR) using the computer software SELNET (Herrmann et al., 2012).  
161 Hauls with < 10 measured individuals were excluded from further analyses following Krag et al. (2014).  
162 The modelling approach followed the procedure described by Sistiaga et al. (2010), Eigaard et al. (2011),  
163 Herrmann et al. (2012), and Madsen et al. (2012). In addition to the logistic model (Eq. 1), six other  
164 models (Eq. 2-7), including the three other classical size selection models “probit” (Eq. 2), “Gompertz”  
165 (Eq. 3) and “Richard” (generalised logistic model with additional asymmetry parameter  $1/\delta$ , Eq. 4) were  
166 tested within this study. For detailed descriptions of those see Wileman et al. (1996). Additionally, three  
167 more complex models that combined two or three logistic models were considered as candidates. Those  
168 were the double logistic model “LogitS2” (Eq. 5; Lipovetsky, 2010), the dual selection logistic model  
169 “Dual\_selection” (Eq. 6; Sistiaga et al., 2010) and the triple logistic model “LogitS3” (Eq. 7; Frandsen  
170 et al., 2010a). All models accounted for overdispersion due to haul-pooling. The retention probability  $r$   
171 of a fish of length  $l$  can be expressed by  $r(l,v)$  with  $v$  describing a vector that contains parameters needed  
172 by the model.

173  $r(l,v) =$

$$174 \quad \text{Logit}(l, L50, SR) \quad (1)$$

$$175 \quad \text{Probit}(l, L50, SR) \quad (2)$$

$$176 \quad \text{Gompertz}(l, L50, SR) \quad (3)$$

$$177 \quad \text{Richard}(l, L50, SR, 1/\delta) \quad (4)$$

$$178 \quad \text{LogitS2} = c_1 \times \text{Logit}(l, L50_1, SR_1) + (1.0 - c_1) \times \text{Logit}(l, L50_2, SR_2) \quad (5)$$



179  $\text{Dual\_selection} = (1.0 - c_1) \times \text{Logit}(1, L50_2, SR_2) + c_1 \times \text{Logit}(1, L50_1, SR_1) \times \text{Logit}(1, L50_2, SR_2)$  (6)

180  $\text{LogitS3} = c_1 \times \text{Logit}(1, L50_1, SR_1) + c_2 \times \text{Logit}(1, L50_2, SR_2) + (1.0 - c_1 - c_2) \times \text{Logit}(1, L50_3, SR_3)$  (7)

181

182 Models that combine two logistic models have been used in previous studies on trawls separating  
183 the selectivity process in a towing phase and haul-back phase (Herrmann et al., 2013a). They have also  
184 been used in studies on trawls with sorting grids (Kvamme and Isaksen, 2004; Sistiaga et al., 2010;  
185 Herrmann et al., 2013b) where the individual fish can escape either through the grid or through the  
186 codend meshes. For the double logistic model LogitS2 (Eq. 5) and dual selection model Dual\_selection  
187 (Eq. 6), the selection process is assumed to consist of two processes. The double logistic model (Eq. 5)  
188 combines two logistic models, one for the first process and one for the second process. The contact ratio  
189 parameter  $c_1$  indicates hereby the probability for an individual to have its selectivity determined by the  
190 first process, i.e. the chance of each individual to get in contact with the selective area within the first  
191 process (Herrmann et al., 2013a). Consequently, the probability to have its selectivity determined by the  
192 second process is  $1.0 - c_1$ .  $L50_1$  and  $SR_1$  or  $L50_2$  and  $SR_2$  describe the selectivity of the according “sub-  
193 process”. The dual selection model (Eq. 6) is similar to the double logistic model, but it is a sequential  
194 function. This means that the proportion of individuals that try to escape in the second process is assumed  
195 to consist of those that did not attempt to escape in the first process and additionally those that attempted  
196 to, but were retained. The triple logistic model LogitS3 (Eq. 7) follows the same principles as the  
197 LogitS2, but includes a third stage of selection, i.e. it is the sum of three logit models in which the weights  
198 of the contributions add up to 1.0 (Frandsen et al., 2010a). Additional parameters required by this model  
199 to describe selectivity are  $L50_3$  and  $SR_3$  explaining the selection in the third “sub-process” and  $c_2$   
200 indicating the probability of an individual to have its selectivity determined by the second process.  
201 Consequently, the chance of an individual to have its selectivity determined by the third process is  $1.0 -$   
202  $c_1 - c_2$ .

203 Selecting the final model for each species followed the procedure of inspecting goodness of fit  
204 as described by Wileman et al. (1996) and by comparing individual Akaike information criterion (AIC)

205 values (Akaike, 1974). If the fit statistics indicated a lack of model fit, i.e. p-value close to zero, deviance  
206 >> degrees of freedom or low R<sup>2</sup>-value (ratio of variance explained by model and observed variance),  
207 residuals were inspected for any structural deviation to determine if structural problems with the model  
208 or overdispersion of the data (McCullagh and Nelder, 1989) were causing such results. Uncertainties  
209 were estimated by calculating Efron 95% confidence intervals (CIs; Efron, 1982) for the final selectivity  
210 curves and selectivity parameters.

211 Selectivity estimates were compared to values from previous studies of Scottish seines and  
212 trawls in the Northeast Atlantic mixed fishery using the estimated selection factor (SF = L50/mesh size).  
213 All studies used codends similar to the one used in the present study (mesh orientation: diamond meshes;  
214 mesh size: 90–150 mm; twine: 4–6 mm double twine; no grids or release panels), all studies analysed  
215 data following guidelines set by Wileman et al. (1996) and all studies were published in peer-reviewed  
216 scientific journals. To account for differences in mesh size measurements due to the use of different tools  
217 (ICES gauge, EU wedge, OMEGA gauge), values were standardized to EU wedge values (wedge =  
218  $0.974 \cdot \text{OMEGA} + 2.96$ , derived from Ferro and Xu (1996) and Frandsen et al. (2009); wedge =  $1.01$   
219  $\text{ICES} + 2.96$  (Ferro and Xu, 1996)).

220 All analyses other than the modelling approach were performed using R Statistical Software (R  
221 Core Team., 2015).

## 222 **3. Results**

### 223 *3.1. Haul and catch overview*

224 Seven valid hauls were conducted (Table 1), which took between 121 and 140 min from setting  
225 out the anchor until the gear was retrieved. Each haul covered an area between 2.58 and 3.04 km<sup>2</sup>, and  
226 depths varied between 7 and 82 m. Catches ranged from 65 to 1503 kg in the codend and from 327 to  
227 8415 kg in the cover. Thirty-one different fish species were caught in this study and the majority of the

228 catch was composed of dab (*Limanda limanda*) and plaice. Other species investigated within this study  
229 were cod (*Gadus morhua*) and red gurnard (*Chelidonichthys lucernus*).

230 The inspection of the cover in the flume tank and the underwater recordings from haul 2  
231 indicated that the cover did not mask the codend at any speed within the tests or at any stage of the  
232 fishing process in the observed haul. Fish escaping from the codend were not observed to swim back  
233 into the codend, although they could easily do so because of the slow towing speed. The observations  
234 indicated that the majority of the catch entered the gear relatively late in the catching process. All fish  
235 seemed to be in good condition during the whole fishing process and during the handling of the catch  
236 on-board.

### 237 3.2. Selectivity estimations and length distributions

238 Selectivity curves and parameters were estimated for dab, cod, plaice and red gurnard (Table 2,  
239 Table 3). Low numbers of individuals, in combination with relatively high proportions of small fish,  
240 resulted in high levels of uncertainty in the analyses. This prohibited an appropriate estimation of  
241 selectivity parameters for the other species. A rather high proportion of small fish was also evident for  
242 all species where selectivity analyses were possible as the number of individuals in the codend  
243 represented only a small part of the total catch (Fig. 4), indicating high numbers of fish escaping into the  
244 cover.

245 A Richard curve with relatively smooth rise (Fig. 4) described the selectivity of cod best (lowest  
246 AIC value). The model fit was acceptable (p-value = 0.81, deviance  $\approx$  DOF (Degree of freedom),  $R^2 =$   
247 0.93; Table 3). Confidence intervals became relatively wide for a range of length classes where the  
248 number of observed individuals was low up to length classes with a retention probability of 1.0. The  
249 estimated average L50 of 41.6 cm was higher than the current MLS and had, like the estimated SR (12.6  
250 cm), relatively wide confidence limits (Table 3, Fig. 4).

251 The selectivity of dab was best described by a triple logistic model (Fig. 4) and the model fit was  
252 good (p-value = 0.35, deviance  $\approx$  DOF,  $R^2 = 1.00$ ; Table 3). Most observed individuals were found in

253 length classes below the selective area of the gear, but almost all of them were larger than the current  
254 MLS of 25 cm (Fig. 4). The selectivity curve itself was steep with narrow confidence limits. L50 was  
255 estimated to be larger than the current MLS of 25 cm (31.2 on average, Table 3) and SR was found to be  
256 narrow (0.8 cm, Table 3).

257         A double logistic model best described the selectivity of plaice. Model fit parameters were good  
258 (p-value: 0.84, deviance  $\approx$  DOF,  $R^2 = 1.00$ ; Table 3). Most individuals belonged to length classes of the  
259 lower range of where selectivity took place, but confidence limits of the steep curve were narrow for all  
260 length classes. The current MLS of 27 cm fell within the selective area and laid within the confidence  
261 limits for the estimated L50 (average = 29.1 cm, Table 3). SR was estimated to be 2.2 cm (Table 3).

262         The selectivity of red gurnard as the only species without MLS (Table 2) could be best described  
263 by a logistic model. Since the low p-value (0.00) indicated a potential lack of model fit (Table 3), the  
264 residuals were investigated. As structures were not detected, it was assumed that overdispersion was at  
265 fault and the model could be applied with confidence. The curve had a smooth rise, but was – especially  
266 for length classes with retention probabilities above 0.5 – characterized by few observations and wide  
267 confidence limits. The estimated L50 and SR values were 31.0 cm and 11.5 cm, respectively (Table 3).

## 268 **Discussion**

269         The goal of this study was to investigate codend selectivity characteristics for several species of  
270 fish in a commercial Danish seine as it is currently used in the Danish fishery off the coast of Denmark.  
271 An important part of the experimental work was the development of a covered codend methodology that  
272 functions at varying towing speeds but particularly at low or no speed. Both flume tank observations and  
273 underwater observations indicated that the current approach of combining floats, weights, a distance bar,  
274 and kites with a cover made of four panels functioned very well. Thus, this methodology could be  
275 applicable in other, similar fisheries where towing speeds are low and variable.

276         The commercial Danish seine used in this study usually included two rear round straps. Round  
277 straps could reduce the mesh opening in a codend and hence the size selectivity by reducing L50, as

278 demonstrated by Herrmann et al. (2006) in a simulation study of haddock in trawls. For flatfish, where  
279 the morphology of the fish fits a low mesh opening angle, theoretically, the reverse effect could be  
280 expected. Because of this, the comparison among trawls, Scottish seines, and Danish seines could be  
281 influenced by the round straps, as previous studies used codends without any additional devices.  
282 However, effects of other selectivity-influencing factors, such as catch rates, are considered to be  
283 stronger than the effects of round straps (Herrmann et al., 2006).

284         It was possible to estimate selectivity curves for 4 of the 31 caught fish species. The codend  
285 mesh size was relatively large, which resulted in low retention for most species. Furthermore, catches of  
286 many non-target species were low. For red gurnard, a mismatch between the caught population structure  
287 and the selective area of the mesh size was observed, i.e. most observed fish were between 10 cm and  
288 30 cm, but our model found that full retention was not obtained below 40 cm. For cod, which can grow  
289 bigger, the catches were low, especially for larger length classes. This resulted in wide confidence limits  
290 of L50 and SR for cod as well as for red gurnard. Therefore, the SF values estimated for cod (3.4), which  
291 were on average similar to Scottish seines (3.2), but higher than for trawls (2.4; Table 4), should be used  
292 with caution. Future studies should focus on providing stronger selectivity estimates for cod and other  
293 species that can grow to sizes that are within the selective area of the gear.

294         Plaice is the most important species in the Danish seine fishery and, as it is also the case for cod,  
295 retention probabilities of small individuals were relatively high. The selectivity curve for plaice indicated  
296 a mismatch between the curve and the current MLS, which means that some plaice below MLS were  
297 retained. The estimated SF value for Danish seines (2.3) was slightly higher than the mean value of  
298 previous trawl studies (2.2), but within their range (2.0 – 2.3; Table 4). This indicates similar amounts  
299 of fish below MLS (MCRS) being caught by both gears, which would be discarded today. Although  
300 discarded plaice may survive (van Beek et al., 1990), they will have to be brought to land within the  
301 landing obligation system and catches will be deducted from the fishermen's quota. However, earnings  
302 of these smaller fish are likely low as it will be prohibited to sell fish below MCRS for direct human  
303 consumption. The current results would indicate potential consequences of the upcoming landing

304 obligation system in terms of catches of smaller plaice to be relatively similar for Danish seiners and  
305 trawlers in this area. Uhlmann et al. (2014), however, reported generally lower discard rates for Danish  
306 seiners than for trawlers in the Skagerrak/North Sea and other European waters, indicating that in general  
307 lower amounts of fish below MLS (MCRS) are caught by the Danish seine fishery. Considering the  
308 results of this more general study, the consequences of the change to the landing obligation system are  
309 likely to be more pronounced in the trawl fishery. Expectable expenditures are, for instance, the  
310 separation of the less valuable catch from the catch with fish above MRCS, the storing of the less valuable  
311 part of the catch on board (Sardà et al., 2015) and ultimately the sale of it. As retention probabilities for  
312 fish below MLS (MCRS) are similarly high, cod may also become a problematic species within the  
313 landing obligation system, but indicated by the smaller average SF value, consequences may again be  
314 more pronounced for bottom trawlers. Expenditure in terms of catches of dab and red gurnard are likely  
315 to be low as retention probabilities for dab below MLS (MCRS) are very low and red gurnard will still  
316 be permitted to be thrown back to sea as it is not part of the list of species that are prohibited to be  
317 discarded within the landing obligation.

318         The selectivity of the two species with the strongest data, dab and plaice, was best described by  
319 models indicative of a multiple selection process. Similar models have so far been used when considering  
320 the selectivity process in trawling to consist of two or more processes, e.g. when separating the process  
321 into towing phase and haul-back phase (Herrmann et al., 2013a) or when using selective devices in  
322 addition to the codend (Kvamme and Isaksen, 2004; Sistiaga et al., 2010; Herrmann et al., 2013b).  
323 Various factors (e.g., mesh opening or tension in the codend meshes) may, however, affect selectivity  
324 characteristics during the fishing process of Danish seining in a similar way and could result in multiple  
325 selection processes. For example, increasing hauling speed over time may result in a change of the  
326 selectivity characteristics of the codend, as the increasing speed may involve more traction on the gear  
327 and on the meshes. The video recordings, however, indicated that most fish entered the seine late during  
328 the capture process, thus the number of escapees in the period of slow speeds should be low. Herrmann  
329 et al. (2015) suggested that taking the catch from a Scottish seine aboard in several batches leaves fish

330 in the codend and extension, where they may be subjected to tightening and relaxing meshes due to wave  
331 movement. This could cause a constant switch from stiff to slack meshes, which in turn could change  
332 selectivity characteristics at the surface and between the underwater and surface parts of the fishing  
333 process. However, catches in the current study were small enough to lift on board at once in most cases.  
334 Slack meshes may also occur when the seine ropes are retrieved and the seine needs to be stopped in  
335 order to be detached from the ropes and attached to the net drum for final retrieval. In contrast to a  
336 trawler, a Danish seiner is anchored at this time, and this stop leads to a complete standstill of the gear.  
337 Slack meshes in combination with lively fish that are in the seine for only a short period compared to  
338 fish in a trawl may explain the observed multiple selection in the Danish seine fishery. Therefore, more  
339 complex models that include dual or multiple models should be considered when describing selectivity  
340 of a Danish seine. Such approaches may result in different selectivity curves or different selectivity  
341 parameter estimates compared to those generated by the more traditional logistic models (Herrmann et  
342 al., 2016).

343         The selectivity estimates generated in this study provide some initial information about several  
344 fish species for which selectivity data have not been collected previously for Danish seines (all species)  
345 or any other fishing gears (dab, red gurnard). This information is important for assessing the ecosystem  
346 effects of fishing gears, for reference when issuing certificates for sustainable fisheries, and for  
347 evaluating the EU landing obligation system which requires the entire catch of listed species to be  
348 counted against a quota. To gain more knowledge about species that were observed in too few amounts  
349 within this study, more experiments need to be conducted, whereby it may be necessary to use non-  
350 commercial codends with smaller mesh sizes to retain more individuals in the codend.

## 351 **Acknowledgement**

352         The authors thank the crew of the HG 35 *Vendelbo* and net maker Ray Godtlielsen as well as  
353 Gert Holst, Reinhardt Jensen, and other technicians from DTU Aqua for being indispensable in  
354 preparing, conducting, and completing follow-up work for the sea trials. This study was conducted as

355 part of the Skånfisk Project with financial support from the Danish Ministry of Food, Agriculture, and  
356 Fisheries.

## 357 **References**

- 358 Akaike, H., 1974. A new look at the statistical model identification. IEEE Trans. on Auto. Control 19,  
359 716-723. <http://dx.doi.org/10.1109/TAC.1974.1100705>
- 360 Condie, H.M., Grant, A., Catchpole, T.L., 2014a. Incentivising selective fishing under a policy to ban  
361 discards; lessons from European and global fisheries. Mar. Pol. 45, 287–292.  
362 <http://dx.doi.org/10.1016/j.marpol.2013.09.001>
- 363 Condie, H.M., Catchpole, T.L., Grant, A., 2014b. The short-term impacts of implementing catch  
364 quotas and a discard ban on English North Sea otter trawlers. ICES J. Mar. Sci. 71, 1266–  
365 1276. <http://dx.doi.org/10.1093/icesjms/fst187>
- 366 Coull, K.A., Jermyn, A.S., Newton, A.W., Henderson, G.I., Hall, W.B., 1989. Length/Weight  
367 Relationships for 88 species of Fish Encountered in the North East Atlantic. Scottish Fisheries  
368 Research Report 43. 81 pp.
- 369 EEC, 2011. Proposal of 13 July 2011 for a regulation of the European Parliament and of the Council on  
370 the Common Fisheries Policy No 2011/0195. Office for Official Publications of the EEC,  
371 Brussels. 11.
- 372 EEC, 2012. Proposal of 29 August 2012 for a regulation of the European parliament and of the council  
373 on certain technical and control measures in the Skagerrak and amending Regulation, (EC) No  
374 850/98 and Regulation (EC) No 1342/2008. Office for Official Publications of the EEC,  
375 Brussels. 18.
- 376 Efron, B., 1982. The jackknife, the bootstrap, and other resampling plans. Society for Industrial and  
377 Applied Mathematics, Philadelphia. 96 pp pp. <http://dx.doi.org/10.1137/1.9781611970319>
- 378 Eigaard, O.R., Herrmann, B., Rasmus Nielsen, J., 2011. Influence of grid orientation and time of day  
379 on grid sorting in a small-meshed trawl fishery for Norway pout (*Trisopterus esmarkii*). Aquat.  
380 Liv. Res. 25, 15–26. <http://dx.doi.org/10.1051/alr/2011152>
- 381 Eigaard, O.R., Bastardie, F., Breen, M., Dinesen, G.E., Hintzen, N.T., Laffargue, P., Mortensen, L.O.,  
382 Nielsen, J.R., Nilsson, H.C., O'Neill, F.G., Polet, H., Reid, D.G., Sala, A., Sköld, M., Smith,  
383 C., Sørensen, T.K., Tully, O., Zengin, M., Rijnsdorp, A.D., 2015. Estimating seabed pressure  
384 from demersal trawls, seines, and dredges based on gear design and dimensions. ICES J. Mar.  
385 Sci. <http://dx.doi.org/10.1093/icesjms/fsv099>
- 386 Eliassen, S.Q., 2014. Cod avoidance by area regulations in Kattegat – experiences for the  
387 implementation of a discard ban in the EU. Mar. Pol. 45, 108–113.  
388 <http://dx.doi.org/10.1016/j.marpol.2013.11.020>
- 389 EuroStat, 2016. Fishing fleet by type of gear and engine power.  
390 [http://appsso.eurostat.ec.europa.eu/nui/show.do?dataset=fish\\_fleet\\_gp&lang=en](http://appsso.eurostat.ec.europa.eu/nui/show.do?dataset=fish_fleet_gp&lang=en) (last accessed  
391 04 July 2016).
- 392 Ferro, R.S.T., Xu, L., 1996. An investigation of three methods of mesh size measurement. Fish. Res.  
393 25, 171–190. [http://dx.doi.org/10.1016/0165-7836\(95\)00403-3](http://dx.doi.org/10.1016/0165-7836(95)00403-3)
- 394 Fonteyne, R., Buglioni, G., Leonori, I., O'Neill, F.G., Fryer, R.J., 2007. Laboratory and field trials of  
395 OMEGA, a new objective mesh gauge. Fish. Res. 85, 197–201.  
396 <http://dx.doi.org/10.1016/j.fishres.2007.02.006>
- 397 Frandsen, R.P., Holst, R., Madsen, N., 2009. Evaluation of three levels of selective devices relevant to  
398 management of the Danish Kattegat-Skagerrak Nephrops fishery. Fish. Res. 97, 243–252.  
399 <http://dx.doi.org/10.1016/j.fishres.2009.02.010>



- 400 Frandsen, R.P., Herrmann, B., Madsen, N., 2010a. A simulation-based attempt to quantify the  
401 morphological component of size selection of *Nephrops norvegicus* in trawl codends. Fish.  
402 Res. 101, 156-167. <http://dx.doi.org/http://dx.doi.org/10.1016/j.fishres.2009.09.017>
- 403 Frandsen, R.P., Madsen, N., Krag, L.A., 2010b. Selectivity and escapement behaviour of five  
404 commercial fishery species in standard square- and diamond-mesh codends. ICES J. Mar. Sci.  
405 67, 1721–1731. <http://dx.doi.org/10.1093/icesjms/fsq050>
- 406 Gerritsen, H.D., McGrath, D., 2007. Precision estimates and suggested sample sizes for length-  
407 frequency data. Fish. Bull. 105, 116–120.
- 408 Graham, N., O'Neill, F.G., Fryer, R.J., Galbraith, R.D., Myklebust, A., 2004. Selectivity of a 120mm  
409 diamond cod-end and the effect of inserting a rigid grid or a square mesh panel. Fish. Res. 67,  
410 151-161. <http://dx.doi.org/10.1016/j.fishres.2003.09.037>
- 411 Herrmann, B., Priour, D., Krag, L.A., 2006. Theoretical study of the effect of round straps on the  
412 selectivity in a diamond mesh cod-end. Fish. Res. 80, 148–157.  
413 <http://dx.doi.org/10.1016/j.fishres.2006.04.018>
- 414 Herrmann, B., Sistiaga, M., Nielsen, K.N., Larsen, R.B., 2012. Understanding the size selectivity of  
415 redfish (*Sebastes* spp.) in North Atlantic trawl codends. J. Northw. Atl. Fish. Sci. 44, 1–13.  
416 <http://dx.doi.org/10.2960/J.v44.m680>
- 417 Herrmann, B., Mieske, B., Stepputtis, D., Krag, L.A., Madsen, N., Noack, T., 2013a. Modelling towing  
418 and haul-back escape patterns during the fishing process: a case study for cod, plaice, and  
419 flounder in the demersal Baltic Sea cod fishery. ICES J. Mar. Sci. 70, 850–863.  
420 <http://dx.doi.org/10.1093/icesjms/fst032>
- 421 Herrmann, B., Sistiaga, M., Larsen, R.B., Nielsen, K.N., Grimaldo, E., 2013b. Understanding sorting  
422 grid and codend size selectivity of Greenland halibut (*Reinhardtius hippoglossoides*). Fish.  
423 Res. 146, 59-73. <http://dx.doi.org/http://dx.doi.org/10.1016/j.fishres.2013.04.004>
- 424 Herrmann, B., Larsen, R.B., Sistiaga, M., Madsen, N.A.H., Aarsæther, K.G., Grimaldo, E., Ingolfsson,  
425 O.A., 2015. Predicting size selection of cod (*Gadus morhua*) in square mesh codends for  
426 demersal seining: A simulation-based approach. Fish. Res.  
427 <http://dx.doi.org/10.1016/j.fishres.2015.07.015>
- 428 Herrmann, B., Krag, L.A., Feekings, J., Noack, T., 2016. Understanding and Predicting Size Selection  
429 in Diamond-Mesh Cod Ends for Danish Seining: A Study Based on Sea Trials and Computer  
430 Simulations. Marine and Coastal Fisheries 8, 277-291.  
431 <http://dx.doi.org/10.1080/19425120.2016.1161682>
- 432 ICES, 2006. Report of the Working Group on Ecosystem Effects of Fishing Activities (WGECO), 5–  
433 12 April 2006, ICES Headquarters, Copenhagen. ACE:05. 174 pp.
- 434 ICES, 2010. Report of the ICES - FAO Working Group on Fishing Technology & Fish Behaviour  
435 (WGFTFB). ICES CM 2010/SSGESST:14. 252 pp.
- 436 ICES, 2015. Report of the Working Group on the Assessment of Demersal Stocks in the North Sea and  
437 Skagerrak (WGNSSK), 28 April-7 May, ICES HQ, Copenhagen, Denmark. ICES CM  
438 2015/ACOM:13. 1031.
- 439 Isaksen, B., Lokkeborg, S., 1993. Escape of cod (*Gadus morhua*) and haddock (*Melanogrammus*  
440 *aeglefinus*) from Danish seine codends during fishing and surface hauling operations. ICES  
441 Mar. Sci. Symp. 196, 86–91.
- 442 Krag, L.A., Herrmann, B., Karlsen, J.D., 2014. Inferring Fish Escape Behaviour in Trawls Based on  
443 Catch Comparison Data: Model Development and Evaluation Based on Data from Skagerrak,  
444 Denmark. PLoS One 9, e88819. <http://dx.doi.org/10.1371/journal.pone.0088819>
- 445 Kvamme, C., Isaksen, B., 2004. Total selectivity of a commercial cod trawl with and without a grid  
446 mounted: grid and codend selectivity of north-east Arctic cod. Fish. Res. 68, 305–318.  
447 <http://dx.doi.org/http://dx.doi.org/10.1016/j.fishres.2003.11.011>
- 448 Lipovetsky, S., 2010. Double logistic curve in regression modeling. J. Appl. Stat. 37, 1785–1793.  
449 <http://dx.doi.org/10.1080/02664760903093633>
- 450 Madsen, N., Hansen, K.E., Moth-Poulsen, T., 2001. The kite cover : a new concept for covered codend  
451 selectivity studies. Fish. Res. 49, 219–226. [http://dx.doi.org/10.1016/S0165-7836\(00\)00210-1](http://dx.doi.org/10.1016/S0165-7836(00)00210-1)

- 452 Madsen, N., Holst, R., 2002. Assessment of the cover effect in trawl codend selectivity experiments.  
 453 Fish. Res. 56, 289-301. [http://dx.doi.org/10.1016/S0165-7836\(01\)00330-7](http://dx.doi.org/10.1016/S0165-7836(01)00330-7)
- 454 Madsen, N., Herrmann, B., Frandsen, R.P., Krag, L.A., 2012. Comparing selectivity of a standard and  
 455 turned mesh T90 codend during towing and haul-back. Aquat. Liv. Res. 25, 231–240.  
 456 <http://dx.doi.org/10.1051/alr/2012021>
- 457 Marčeta, B., 2013. Length-weight relationship of *Arnoglossus laterna* from the Gulf of Trieste, sampled  
 458 from 2.2.2000 to 19.3.2013 (n = 116, length range from 7.2 cm to 16.0 cm).  
 459 [www.biosweb.org/openpdf.php?ctivo=6029.pdf](http://www.biosweb.org/openpdf.php?ctivo=6029.pdf). (accessed: 08-07-2015).
- 460 McCullagh, P., Nelder, J.A., 1989. Generalized Linear Models, Second Edition. Chapman and Hall,  
 461 London. 511 pp pp.
- 462 R Core Team., 2015. R: A Language and Environment for Statistical Computing. R Foundation for  
 463 Statistical Computing. Vienna. Available at: <https://www.R-project.org/> ( accessed 15  
 464 December 2015).
- 465 Reeves, S.A., Armstrong, D.W., Fryer, R.J., Coull, K.A., 1992. The effects of mesh size, cod-end  
 466 extension length and cod-end diameter on the selectivity of Scottish trawls and seines. ICES J.  
 467 Mar. Sci. 49, 279-288. <http://dx.doi.org/10.1093/icesjms/49.3.279>
- 468 Sardà, F., Coll, M., Heymans, J.J., Stergiou, K.I., 2015. Overlooked impacts and challenges of the new  
 469 European discard ban. Fish Fish. 16, 175–180. <http://dx.doi.org/10.1111/faf.12060>
- 470 Shanks, A.M., 1981. Further analysis of total weight/length data for spur dogfish. DAFS Marine  
 471 Laboratory Internal Report.
- 472 Sistiaga, M., Herrmann, B., Grimaldo, E., Larsen, R.B., 2010. Assessment of dual selection in grid  
 473 based selectivity systems. Fish. Res. 105, 187–199.  
 474 <http://dx.doi.org/10.1016/j.fishres.2010.05.006>
- 475 Suuronen, P., Chopin, F., Glass, C., Løkkeborg, S., Matsushita, Y., Queirolo, D., Rihan, D., 2012. Low  
 476 impact and fuel efficient fishing—Looking beyond the horizon. Fish. Res. 119–120, 135–146.  
 477 <http://dx.doi.org/10.1016/j.fishres.2011.12.009>
- 478 Thrane, M., 2004. Energy Consumption in the Danish Fishery: Identification of Key Factors. J. Ind.  
 479 Ecol. 8, 223–239. <http://dx.doi.org/10.1162/1088198041269427>
- 480 Uhlmann, S.S., van Helmond, A.T.M., Kemp Stefánsdóttir, E., Sigurðardóttir, S., Haralabous, J.,  
 481 Bellido, J.M., Carbonell, A., Catchpole, T., Damalas, D., Fauconnet, L., Feekings, J., Garcia,  
 482 T., Madsen, N., Mallold, S., Margeirsson, S., Palialexis, A., Readdy, L., Valeiras, J.,  
 483 Vassilopoulou, V., Rochet, M.-J., 2014. Discarded fish in European waters: general patterns  
 484 and contrasts. ICES J. Mar. Sci. 71, 1235–1245. <http://dx.doi.org/10.1093/icesjms/fst030>
- 485 van Beek, F.A., van Leeuwen, P.I., Rijnsdorp, A.D., 1990. On the survival of plaice and sole discards  
 486 in the otter-trawl and beam-trawl fisheries in the North Sea. Netherlands Journal of Sea  
 487 Research 26, 151–160. [http://dx.doi.org/http://dx.doi.org/10.1016/0077-7579\(90\)90064-N](http://dx.doi.org/http://dx.doi.org/10.1016/0077-7579(90)90064-N)
- 488 von Brandt, A., 2005. Fish Catching Methods of the World. Blackwell publishing, Oxford. 523 pp.  
 489 275-290 pp.
- 490 Wileman, D.A., Ferro, R.S.T., Fonteyne, R., Millar, R.B., 1996. Manual of Methods of Measuring the  
 491 Selectivity of Towed Fishing Gears. ICES Coop. Res. Rep., No. 215. 216 pp.

492

493 **Figure captions**

494 Figure 1. Area and vessel tracks for the seven hauls conducted for the codend selectivity trials aboard  
495 the HG 35 *Vendelbo* in 2014.

496 Figure 2. Schematic drawing of the codend cover and its attachment to the seine including information  
497 about modifications to account for different stages of the fishing process (kites, floats, lead ropes, PE  
498 bar). Information about netting and number of panels/selvedges in the specific parts is also included  
499 (cross sections in top of drawing). A and B are necessary parts to attach the cover to the seine net. C  
500 represents part of the cover around the area of the codend where the main selection is expected to take  
501 place and D serves for storing the fish in the cover. 1: Kites. 2: 1.9 m PE bar (transversal). 3: Floats. 4:  
502 Zipper. 5: 3 m long lead rope. 6: 1.7 m long lead rope (transversal). 7: 2.1 m long lead rope.

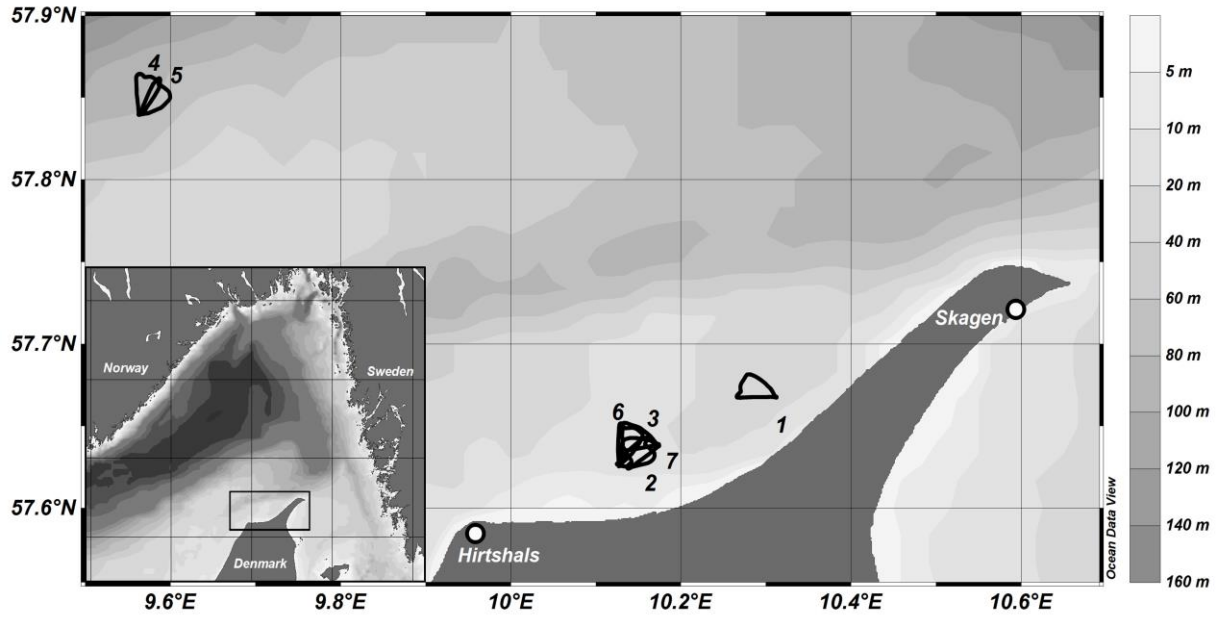
503 Figure 3. Preliminary assessment of the cover with wrapped rear part in flume tank. For clarification of  
504 parts of cover and items attached to it see Fig. 2 and section 2.1.

505 Figure 4. Selectivity curves for fish including 95% confidence intervals (grey shaded areas), length-  
506 specific retention rates (white diamonds), current species-specific MLS if available (vertical stippled  
507 line), and length distributions (stippled line: total; solid line: codend). Numbers in parentheses indicate  
508 number of hauls used for analysis (i.e. those that had > 10 measured individuals).

509

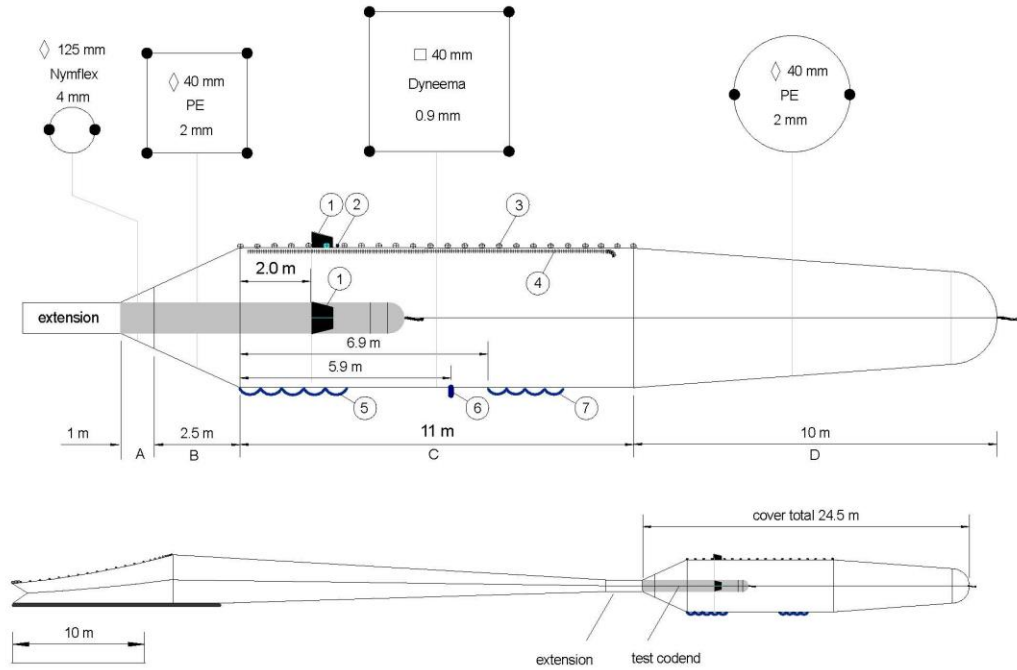
510

511 Figure 1:



512

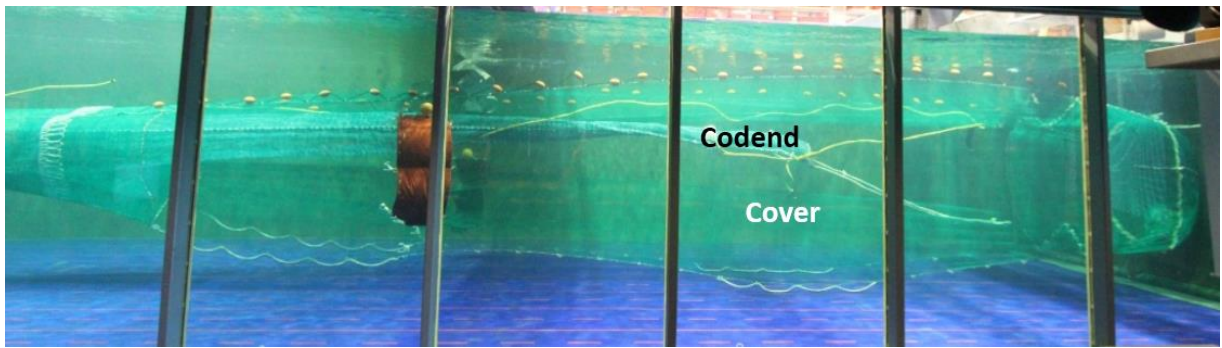
513 Figure 2:



514

515

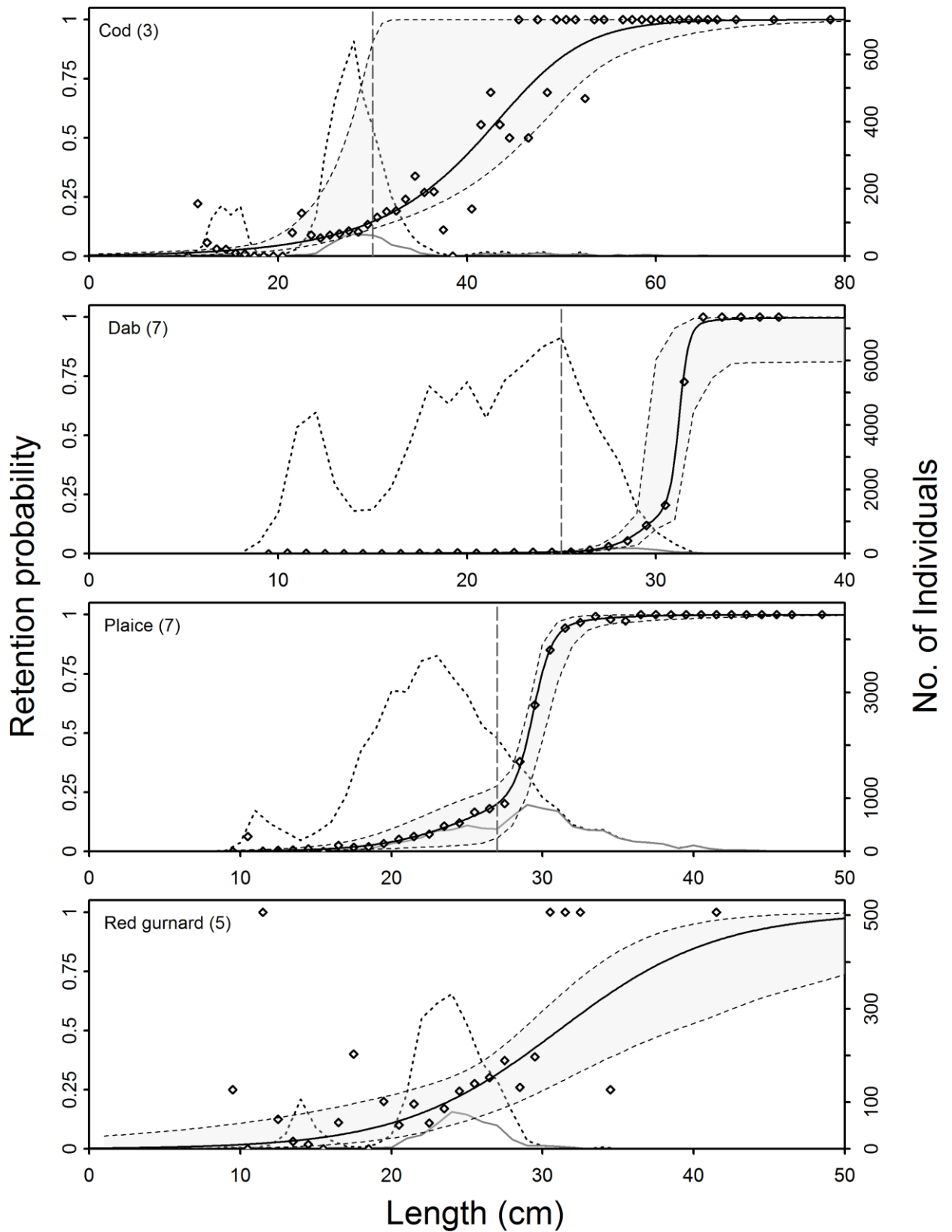
516 Figure 3:



517

518

519 Figure 4:



520

1 Table 1. Overview of hauls conducted for the codend selectivity trials aboard the HG 35 *Vendelbo* in  
 2 2014, including information about time, haul conditions, and total catches. Duration describes time from  
 3 setting anchor until gear was retrieved aboard the vessel. Depth is for the position where the anchor was  
 4 set and where the seine was deployed. Sea states as described by Wileman et al. (1996).

Haul	Date	Duration (min)	Covered area (km <sup>2</sup> )	Depth (m)		Sea state	Total Catch (kg)	
				Anchor	Seine		Codend	Cover
1	29.08.2014	136	2.69	25.6	18.3	1	1503	8415
2	01.09.2014	136	2.85	12.8	9.1	2	198	1328
3	01.09.2014	137	3.04	12.8	12.8	2	207	1275
4	02.09.2014	122	2.83	65.8	82.3	2	512	1174
5	02.09.2014	121	2.58	65.8	56.7	2	470	1068
6	03.09.2014	140	2.93	7.3	11.0	2	65	327
7	03.09.2014	135	2.82	7.3	12.8	1	69	1023

5

6 Table 2. Analysed catch data including information about length range, number of measured  
 7 individuals, and sampling ratio. Current MLS (minimum landing size; if available) is given in  
 8 parentheses. \* indicates species that will have a minimum reference conservation size in the future. NA  
 9 indicates that there is no MLS present for this species.

Species	Length range (cm)	Codend		Cover	
		No. measured	Sampling ratio	No. measured	Sampling ratio
Cod (30 cm)*	10 - 78	620	1	1070	0.272
Dab (25 cm)	9 - 36	1053	1	4903	0.063
Plaice (27 cm)*	9 - 51	2937	0.353	3404	0.109
Red gurnard (NA)	9 - 41	427	1	458	0.287

10

11 Table 3. Summary of model parameters selectivity parameters (L50 as length with 50% retention, SR as  
 12 selection range) with 95% confidence limits, name of model used, and values describing goodness of fit  
 13 (DOF = degree of freedom). See sections 2.3 and 3.2 for explanations of selectivity parameters and model  
 14 fit values.

Parameters	Cod	Dab	Plaice	Red gurnard
L50	41.6 (27.2 - 46.4)	31.2 (29.6 - 31.6)	29.1 (28.7 - 30.1)	31.0 (28.6 - 38.7)
SR	12.6 (4.8 - 16.0)	0.8 (0.1 - 2.7)	2.2 (1.7 - 3.6)	11.5 (7.9 - 26.6)
1/δ	0.5 (0.1 - 1.3)	-	-	-
L50 <sub>1</sub>	-	31.3 (30.4 - 148.6)	29.4 (29.1 - 30.5)	-
SR <sub>1</sub>	-	0.5 (0.1 - 59.5)	1.4 (1.0 - 10.4)	-
L50 <sub>2</sub>	-	29.8 (16.1 - 31.3)	25.5 (20.0 - 29.7)	-
SR <sub>2</sub>	-	2.2 (0.1 - 20.3)	6.5 (1.6 - 11.0)	-
L50 <sub>3</sub>	-	28.0 (0.1 - 30.0)	-	-
SR <sub>3</sub>	-	15.1 (0.1 - 100.0)	-	-
Contact ratio 1	-	0.7 (0 - 1.0)	0.7 (0.1 - 0.9)	-



Contact ratio 2	-	0.2 (0 - 1.0)	-	-
Model	Richard	LogitS3	LogitS2	Logit
P-value	0.8101	0.3499	0.8423	0.0000
Deviance	45.70	21.92	26.69	71.67
DOF	55	20	35	24
R <sup>2</sup> -value	0.93	1.00	1.00	0.33

15

16 Table 4. Comparison of estimated selection factors (SFs) between this study and previous selectivity  
 17 studies of Scottish seines and trawls. Data values are mean and range.

Species	SF - present study Danish seine	SF - former studies	
		Scottish seine	Trawl
Cod	3.4	3.2 (2.0 – 3.8) <i>1,2</i>	2.4 (1.6 - 3.4) <i>1,3,4,5,6,7,8</i>
Plaice	2.3	-	2.2 (2.0 - 2.3) <i>5,6,7,8</i>

18 <sup>1</sup>Reeves et al., 1992; <sup>2</sup>Isaksen and Løkkeborg, 1993; <sup>3</sup>Graham et al., 2004; <sup>4</sup>Madsen and Stæhr, 2005; <sup>5</sup>Frandsen et al., 2009;

19 <sup>6</sup>Frandsen et al., 2010; <sup>7</sup>Frandsen et al., 2011; <sup>8</sup>Madsen et al., 2012