



Aalborg Universitet

AALBORG UNIVERSITY  
DENMARK

## Out-of-hospital cardiac arrest

*Does rurality decrease chances of survival?*

Ringgren, Kristian Bundgaard; Kragholm, Kristian Hay; Lindgren, Filip Lyng; Jacobsen, Peter Ascanius; Jørgensen, Anne Juul; Christensen, Helle Collatz; Mills, Elisabeth Helen Anna; Jakobsen, Louise Kollander; Yonis, Harman; Folke, Fredrik; Lippert, Freddy; Torp-Pedersen, Christian

*Published in:*  
Resuscitation plus

*DOI (link to publication from Publisher):*  
[10.1016/j.resplu.2022.100208](https://doi.org/10.1016/j.resplu.2022.100208)

*Creative Commons License*  
CC BY-NC-ND 4.0

*Publication date:*  
2022

*Document Version*  
Publisher's PDF, also known as Version of record

[Link to publication from Aalborg University](#)

*Citation for published version (APA):*  
Ringgren, K. B., Kragholm, K. H., Lindgren, F. L., Jacobsen, P. A., Jørgensen, A. J., Christensen, H. C., Mills, E. H. A., Jakobsen, L. K., Yonis, H., Folke, F., Lippert, F., & Torp-Pedersen, C. (2022). Out-of-hospital cardiac arrest: Does rurality decrease chances of survival? *Resuscitation plus*, 9, Article 100208. <https://doi.org/10.1016/j.resplu.2022.100208>

### General rights

Copyright and moral rights for the publications made accessible in the public portal are retained by the authors and/or other copyright owners and it is a condition of accessing publications that users recognise and abide by the legal requirements associated with these rights.

- Users may download and print one copy of any publication from the public portal for the purpose of private study or research.
- You may not further distribute the material or use it for any profit-making activity or commercial gain
- You may freely distribute the URL identifying the publication in the public portal -

Available online at [www.sciencedirect.com](http://www.sciencedirect.com)

# Resuscitation Plus

journal homepage: [www.elsevier.com/locate/resuscitation-plus](http://www.elsevier.com/locate/resuscitation-plus)

## Clinical paper

# Out-of-hospital cardiac arrest: Does rurality decrease chances of survival?



**Kristian Bundgaard Ringgren<sup>a,\*</sup>, Kristian Hay Kragholm<sup>a</sup>, Filip Lyng Lindgren<sup>a</sup>, Peter Ascanius Jacobsen<sup>b</sup>, Anne Juul Jørgensen<sup>c</sup>, Helle Collatz Christensen<sup>c,d</sup>, Elisabeth Helen Anna Mills<sup>b</sup>, Louise Kollander Jakobsen<sup>c</sup>, Harman Yonis<sup>e</sup>, Fredrik Folke<sup>c</sup>, Freddy Lippert<sup>c</sup>, Christian Torp-Pedersen<sup>a,e,f</sup>**

<sup>a</sup> Department of Cardiology, Aalborg University Hospital, Aalborg, Denmark

<sup>b</sup> Department of Respiratory Diseases, Aalborg University Hospital, Aalborg, Denmark

<sup>c</sup> Copenhagen Emergency Medical Services, University of Copenhagen, Copenhagen, Denmark

<sup>d</sup> National Clinical Registries, Frederiksberg, Denmark

<sup>e</sup> Department of Cardiology, Nordsjællands Hospital, Hillerød, Denmark

<sup>f</sup> Department of Public Health, University of Copenhagen, Denmark

## Abstract

**Background:** Geographical setting is seldomly taken into account when investigating out-of-hospital cardiac arrest (OHCA). It is a common notion that living in rural areas means a lower chance of fast and effective help when suffering a time-critical event. This retrospective cohort study investigates this hypothesis and compares across healthcare-divided administrative regions.

**Methods:** We included only witnessed OHCAs to minimize the risk that outcome was predetermined by time to caller arrival and/or recognition. Arrests were divided into public and residential. Residential arrests were categorized according to population density of the area in which they occurred. We investigated incidence, EMS response time and 30-day survival according to area type and subsidiarily by healthcare-divided administrative region.

**Results:** The majority (71%) of 8,579 OHCAs were residential, and 53.2% of all arrests occurred in the most densely populated cell group amongst residential arrests. This group had a median EMS response time of six minutes, whereas the most sparsely populated group had a median of 10 minutes. Public arrests also had a median response time of six minutes. 30-day survival was highest in public arrests (38.5%, [95% CI 36.9;40.1]), and varied only slightly with no statistical significance between OHCAs in densely and sparsely populated areas from 14.8% (95% CI 14.4;15.2) and 13.4% (95% CI 12.2;14.7).

**Conclusion:** Our study demonstrates that while EMS response times in Denmark are longer in the rural areas, there is no statistically significant decrease in survival compared to the most densely populated areas.

**Keywords:** Out-of-hospital cardiac arrest, OHCA, Survival, Geography, Population density, EMS response time

## Introduction

Out-of-hospital cardiac arrest (OHCA) is a well known time-critical condition, and has for a long time received great attention from both

clinicians, prehospital administration and mainstream media. This partly results from the use of survival after OHCA as a proxy to benchmark the performance of the Emergency Medical Services (EMS). Worldwide, a culture of excellence has spread, encouraging friendly competition in increasing survival.<sup>1</sup>

**Abbreviations:** OHCA, Out of Hospital Cardiac Arrest, EMS, Emergency Medical Services, HEMS, Helicopter Emergency Services, BLS, Basic Life Support, ALS, Advanced Life Support, AED, Automated External Defibrillator, IQR, Interquartile Range, GPS, Global Positioning System.

\* Corresponding author.

E-mail address: [Kristian.Ringgren@Protonmail.com](mailto:Kristian.Ringgren@Protonmail.com) (K.B. Ringgren).

<https://doi.org/10.1016/j.resplu.2022.100208>

Received 4 January 2022; Received in revised form 14 January 2022; Accepted 14 January 2022

Available online xxxx

2666-5204/© 2022 The Authors. Published by Elsevier B.V. This is an open access article under the CC BY-NC-ND license (<http://creativecommons.org/licenses/by-nc-nd/4.0/>).

This way of benchmarking has spread to the political and economic debate, and is used whenever a new hospital is to be built, as there is a general conception that experiencing an OHCA far away from an established hospital, with potentially longer EMS response times, decreases the chance of survival. Nevertheless, it remains debated whether specific geographical parameters influence important factors such as EMS response time and survival.

In Denmark, the EMS are obliged by contract to live up to a certain median EMS response time. This mechanism can work either of two ways: It could incline the EMS to station ambulances scattered across the country, but innately, remote areas are prone to longer response times if the vehicle which was originally stationed in the given area is otherwise occupied. It could also invoke a strategy of centralization to a certain degree, as most medical events will inevitably happen where most of the population is settled. This way, the EMS can keep the median response time down by reaching the majority of the events rapidly, and downgrade more remote areas with fewer events. It is a constant worry of politicians and citizens alike that more remote, thinly populated areas have a lower chance of a rapid response and lower odds of favourable outcome when an acute event like an OHCA occurs. This registry based, follow-up study aims to investigate whether living in rural, sparsely populated, areas comes at the cost of a lower chance of survival and simultaneously benchmark the five healthcare-divided administrative regions in Denmark.

## Methods

### Study setting

Denmark comprises 4,345,831 cells of 100 m by 100 m of mixed population density. The geography is divided into five healthcare-divided administrative regions as shown in supplementary, eFigure 1.

Each region is an administrative unit, responsible for the in- and out-of-hospital systems and services within itself. In each region the EMS consists of a dispatch center (one per region), ambulances providing basic life support (BLS) and physician-staffed cars and helicopters providing advanced life support (ALS). Furthermore, some regions employ paramedic-staffed cars providing ALS. Ambulance services providing BLS are either public (and thus administered by the region) or provided by private contractors. All physician-staffed cars (which are dispatched to all suspected OHCA) and helicopters (HEMS) are public. Paramedic-staffed cars can be either.

The specific number of vehicles available to each region is largely undisclosed, and in part determined by the private contractors. Notable interregional differences between regions are that while the Central Denmark Region employs the largest amount of physician staffed vehicles, the Zealand Region does not utilize this response form. HEMS is cross-regionally administrated, and three of such vectors were available from 2016 to 2018 where a fourth was implemented.<sup>2</sup>

Multiple volunteer responder programmes were active in the time period, and while no one, national system was implemented until 2020, all regions had a form of volunteer responder programme in the period, either by SMS- or app activation.

All regions utilized a nationwide criterion-based emergency medical dispatch system (Danish Index) throughout the period, and there was one acute, percutan cardiac intervention center in each region except the Zealand Region from which patients are brought to Rigshospitalet in The Capital Region.<sup>3</sup>

Regardless of the administrative setup, the EMS services are publicly financed, and in each region, there is a political council which, on the basis of professional counseling and political considerations, determines the highest acceptable median EMS response time.<sup>4</sup> Population density and comprisement varies across regions and geography.

### Data collection

Inclusion data was based on OHCA registered in the Danish Cardiac Arrest registry.

All initiated resuscitative efforts in Denmark are required to be registered by the EMS by filing a case report form to this registry. To allow geographical analysis, only reports filed after logging of GPS coordinates began in 2016 were collected, and subsequently matched to a geographical hectare by the coordinates of the ambulance on arrival.

Data on geographical extents of healthcare-divided administrative regions was gathered using data from the Danish Map Supply. Further, data on population density was acquired on a square hectare (cell) level, defined by the coordinate of the lower-left corner from a private data supplier.

Each cell is re-evaluated once per year, and as such the total number of hectares does not vary between years, but the population density of the cells might. In order to avoid person-sensitive data, the population density data received on sparsely populated areas was a mean over an area to a minimum of 1.8 people per cell.

### Data analysis

#### Cell groups

Each cell has one representation for each year between 2016 and 2019. The pool of cells was divided into three groups with an approximately equal number of cells in each group according to population density. Population was defined as night-time population to reflect the amount of people residing in the cell and thereby correspond to residential arrests. Cells with a population of zero and a population so dense that it was not represented in all regions were not included in analysis. In addition, cells containing airports were not included in the analysis due to the mismatch between living population and actual flow of people.<sup>5</sup> A cell was allowed to change groups each year. OHCA that happened in public were treated as a separate group regardless of population and were not included in population and cell analysis.

Population was summed over the years and presented as an absolute number. Residential OHCA were summarized according to population density group and subsequently, along with public OHCA according to healthcare-divided administrative region. When presenting population density intervals, inclusion of a number in a group is denoted by a bracket [or] and exclusion of the number from the group is denoted by a parenthesis ().

#### Incidence

Arrests without valid GPS data or with missing data on the arrest site were excluded. Only bystander witnessed arrests were included. This was done in order to minimize pre-recognition time bias and optimize regional comparability. Incidence was summed for each cell across years according to the healthcare-divided administrative region and reported as raw numbers with column percentages.

OHCA were categorized according to the case file as being either residential or any three of "Trafficked area", "Nature area" or "Other". OHCA happening in nursing homes are defined as res-

idental if the patient suffering the OHCA is registered as a permanent resident. All but residential arrests were categorized as public.

Inclusion and exclusion process is depicted in Fig. 1.

### EMS response times

Response times were treated univariately as time in minutes from the call received at the emergency medical dispatch center to the first EMS-vehicle at the scene. It was received from the registry as integers, and reported as medians with 25% and 75% quartiles and interquartile ranges (IQR) according to cell group.

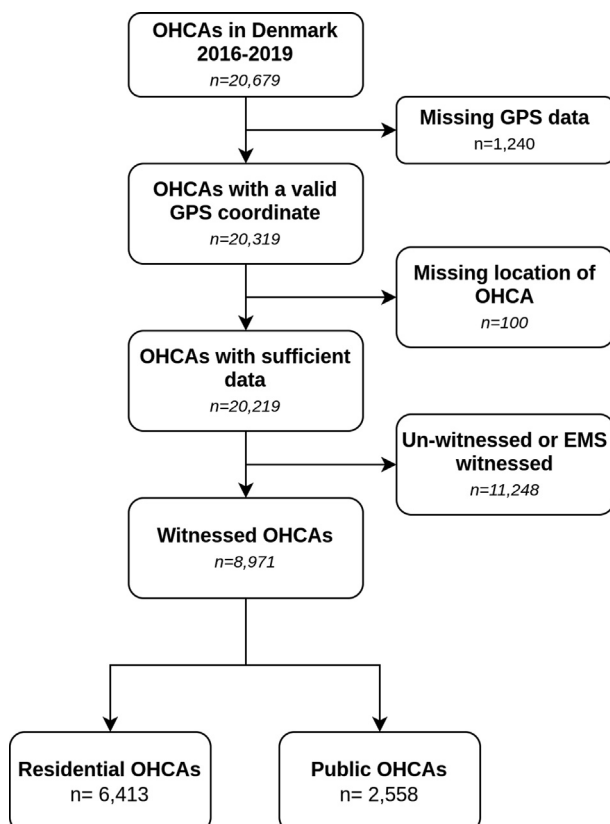
### Survival

Survival was reported unadjusted in univariate analysis as the percentage of patients with valid survival data who survived to day 30 after OHCA and 95% confidence intervals for rates (CI) were calculated and presented in brackets []. Survival was stratified according to cell group and healthcare-divided administrative region.

Data analysis was conducted using R statistical software version 4.1.1 and RStudio v. 1.4.1103 with attached packages for the data analysis.<sup>6–13</sup>

### Data permissions

The study was approved by the Danish Data Protection Agency. The Danish National Committee on Health Research Ethics does not require ethical approval for registry-based studies. The use of the Danish Cardiac Arrest Registry used for the conduct of this study was approved in the North Denmark Region (2008-58-0028).



**Fig. 1 – Inclusion flowchart.**

## Results

### Cell groups

The analysis included data for four years, and as such, the distribution of accumulated cells is shown in eTable 1 according to population density and region. 1,318 (0.008%) cells had a population so dense that it was not represented in all regions (greater than 311), 27,792 (0.16%) cells were airports, and 15,671,533 (90.2%) had no population. A total of 178,132 (1.0%) cells were not assigned to a region of which 4,307 (0.02%) had a population of 311 or less and above zero with no airport. The geographical distribution is depicted on a map in supplementary eFigure 2. For the purpose of this illustration, population data for 2019 is chosen.

The accumulated population in each cell group is shown in Table 1, stratified by region. Notably, the Capital Region had the largest span, with 28,663 and 140,941 cells in the least- and most densely populated cell group respectively. Correspondingly, these areas contributed 87,400 and 5,940,000 inhabitants respectively summed across four years. The other health-care administrative regions have a quite different distribution, with 60%-70% of the population living in the most densely populated cell groups compared to 93% in the Capital Region of Denmark and accordingly 28%-31% of the area being densely populated, as opposed to 64% in the Capital Region.

### Incidence

Table 2 shows the distribution of OHCAs stratified by cell group and healthcare-divided administrative region. A total of 392 (4.4%) OHCAs were witnessed, but happened in a cell that was not included in the analysis (eg. population of zero, more than 311 or in an airport). More than half of all the arrests (53.2%) occurred in the most densely populated cell group. OHCAs that took place in residential areas accounted for 6,021 (70.2%).

### EMS response times

A total of 732 (8.2%) arrests had missing values for EMS response time. Median EMS response times in cell groups ranged from 10 (IQR 5.25) minutes in the least densely populated cell group to 6 (IQR 5) minutes in the most populated cell group and public arrests as depicted in Fig. 2. Overall, EMS response time shortened as population density increased, while the spread of the interquartile range was uniformly between two minutes less and three minutes more than the median. Individual EMS response times spanned from 1 to 240 minutes.

### Survival

Survival data was missing in 430 (4.8%) of included OHCAs. Of the remaining, a total of 1,802 (21.1%) survived to 30 days after OHCA. Of the survivors, 66 (3.7%) happened in areas not included in analysis (eg. population of zero, more than 311 or in an airport). Fig. 3 depicts survivors in percentages according to cell group as a dot with 95% CI. In the least populated cell group survival was 13.4% (95% CI 12.2;14.7). In the medium populated cell group survival was 14.6% (95% CI 13.7;15.5), and in the most densely populated cell group 14.8% (95% CI 14.4;12.2). OHCAs that occurred in public had the highest survival with a rate of 38.5% (95% CI 36.9;40.1).

When further stratifying on healthcare-divided administrative region, as is depicted in Fig. 4, the overall picture remains the same, with significantly higher survival rate in public arrests, and generally

**Table 1 – Population in 100,000 according to population density and region, 2016–2019\***

Cell group	Missing Region	Capital Region of Denmark	Central Denmark Region	North Denmark Region	Region of Southern Denmark	Region Zealand	Total
[1.8–4)	0.03 (4.2%)	0.87 (1.4%)	4.73 (9.3%)	3.39 (14.5%)	3.95 (12%)	4.96 (10.3%)	17.9 (8.2%)
[4–12)	0.1 (13.9%)	3.35 (5.3%)	10.51 (20.7%)	5.24 (22.4%)	7.1 (21.6%)	10.79 (22.5%)	37.1 (16.9%)
≥12	0.6 (83.3%)	59.41 (93.4%)	35.65 (70.1%)	14.75 (63.1%)	21.79 (66.4%)	32.3 (67.2%)	164.5 (74.9%)
Total	0.72 (100%)	63.64 (100%)	50.89 (100%)	23.38 (100%)	32.84 (100%)	48.05 (100%)	219.5 (100%)

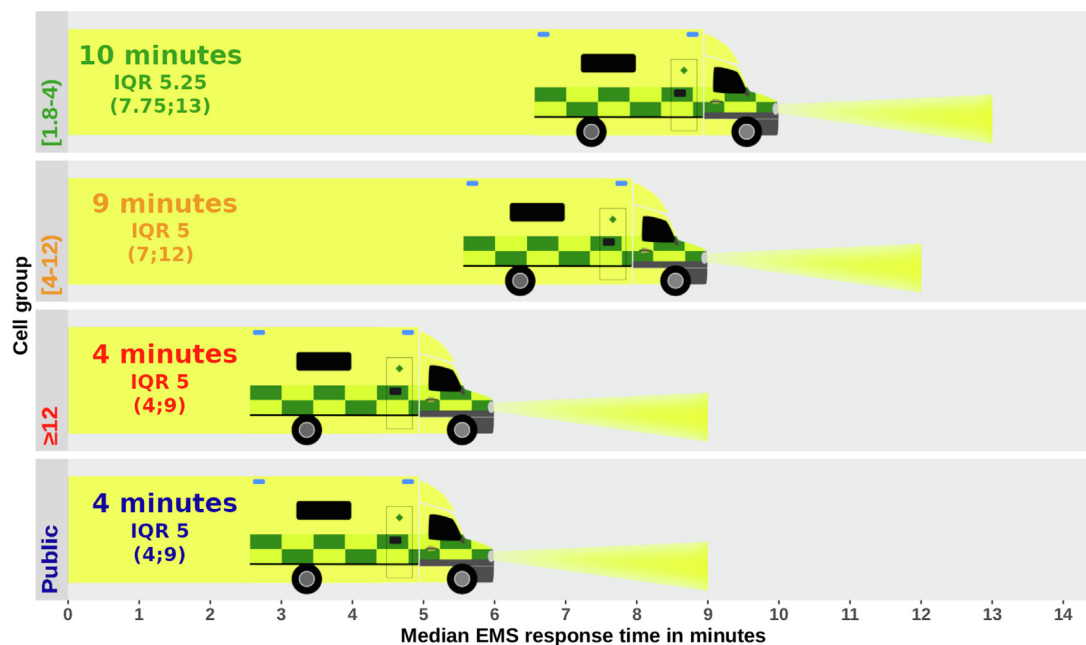
[]denotes inclusion of number, () denotes exclusion.

\* Rounding errors occur.

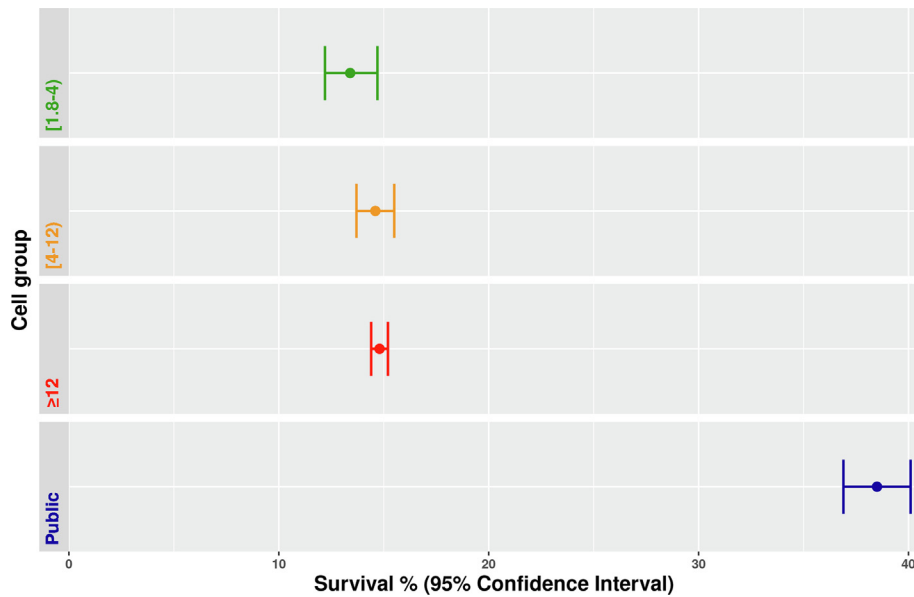
**Table 2 – Distribution of OHCA according to cell group and region.**

Cell group	Capital Region	Central Denmark Region	North Denmark Region	South Denmark Region	Zealand Region	Total
[1.8–4)	39 (1.6%)	111 (6.0%)	84 (7.8%)	87 (4.8%)	115 (8.6%)	436 (5.1%)
[4–12)	108 (4.3%)	250 (13.6%)	173 (16.0%)	276 (15.4%)	215 (16.0%)	1022 (11.9%)
≥12	1549 (61.5%)	956 (51.9%)	495 (45.8%)	928 (51.7%)	635 (47.3%)	4563 (53.2%)
Public	822 (32.6%)	525 (28.5%)	329 (30.4%)	504 (28.1%)	378 (28.1%)	2558 (29.8%)
Total	2518 (100%)	1842 (100%)	1081 (100%)	1795 (100%)	1343 (100%)	8579 (100%)

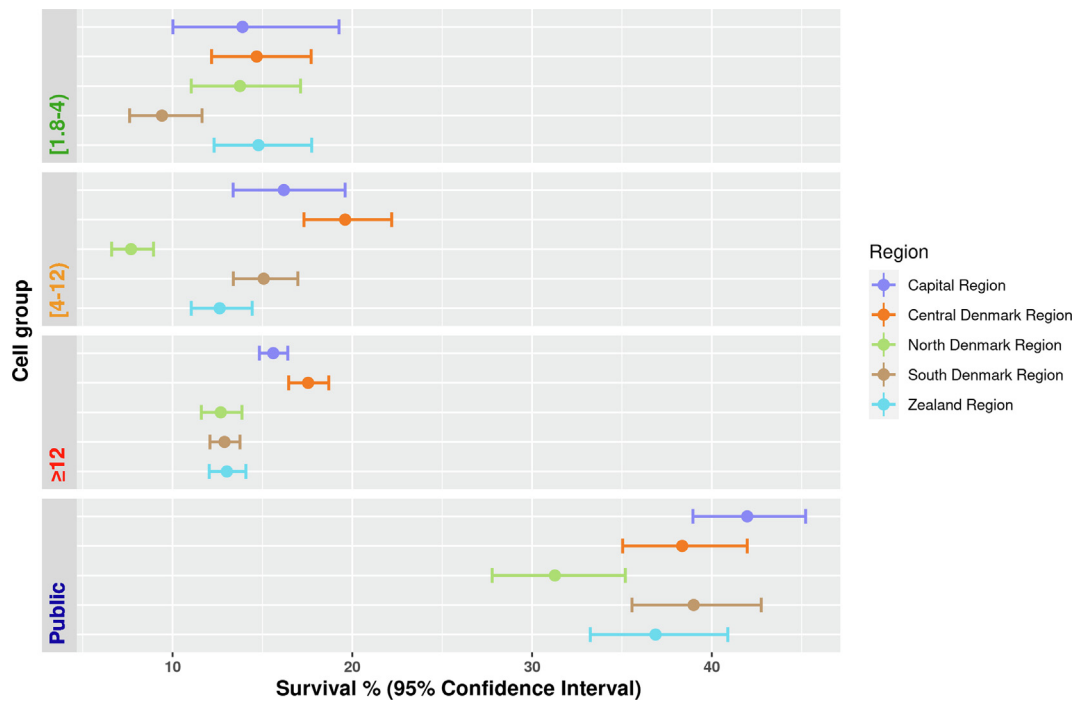
[]denotes inclusion of number, () denotes exclusion.



**Fig. 2 – Median EMS response time in minutes according to population density. Front end of ambulances showing median response time, end of headlight depicting 3rd quartile and IQR presented under the median as text on to the left.**



**Fig. 3 – Survival in % according to cell group. Dot represents survival percentage and lines indicate 95% confidence interval (CI). Colouring of dots and lines are according to cell group.**



**Fig. 4 – Survival in % according to cell group and healthcare-divided administrative region. Dot represents survival percentage and lines indicate 95% confidence interval (CI). Colouring of dots and lines are according to healthcare-divided.**

overlapping 95% CIs. In the least densely populated cell group, the South Denmark Region stands out with a survival rate of 9.41% (95% CI 7.6;11.6) but with 95% CI overlapping with both North Denmark Region and Capital Region. In the medium densely populated cell group, the North Denmark Region falls behind with a survival rate of 7.7% (95% CI 6.6;8.9) with no overlaps of 95% CI. In the most densely populated cell group, the Capital Region and the Central

Denmark Region have the highest survival rates of 15.6% (95% CI 14.3;16.4) and 17.5% (95% CI 16.5;18.7). The remaining three regions have lower survival rates with 95% CIs that do not overlap with the two first. For public arrests, survival rates are lowest in the North Denmark Region at 31.3% (95% CI 27.8;35.2) and highest in the Capital Region at 42.0% (95% CI 39.0;45.2), both with 95% CIs overlapping other regions.

---

## Discussion

This study aimed to investigate differences in residential OHCA across different geographical areas, compare them to public OHCA and further stratify by healthcare-divided administrative region. In summary, by far the largest proportion of OHCA occurred in the most densely populated third of Denmark, but surprisingly the survival rate was not significantly lower in less populated areas. Survival rates after public OHCA were found to be significantly higher than all residential arrests, in accordance with previous findings.<sup>14,15</sup>

Looking at differences across the healthcare-divided administrative regions, it is clear that not one region stands out across cell groups. While some particular administrative regions do perform either better or worse in specific cell groups, the same administrative regions have survival rates comparable to the other regions in other cell groups. This indicates that the actual pre-hospital effort does not vary significantly between regions, and considering that each healthcare-divided administrative region only has one primary intervention center it would seem that differences in geography and demographic composition between the regions are determinants of specific survival rates in different cell groups.

Concerning the consequences of having a cardiac arrest in a rural area in Denmark, the disparities in the EMS response time are relatively high with a difference in median times between the most densely populated and rural areas of four minutes. Although the response times in general may not be long, there is still a rough 50% increase between the highest and the lowest median, thus long enough for single-person cardiopulmonary resuscitation (CPR) quality and survival to decrease significantly.<sup>16,17</sup>

Previous similar studies have shown an apparent increase in OHCA survival in more densely populated areas compared to less densely populated areas.<sup>18–21</sup> However, other studies find no significant differences.<sup>22,23</sup> One study found, in line with our finding, that while in crude analysis survival-rate depended on rurality, it was not an independent prognostic factor.<sup>24</sup> Most previous studies included both witnessed and unwitnessed arrests. Doing so factors that are non-modifiable by the EMS plays a pivotal role in determining outcome and is, by extension, less relevant to the political debate.

When examining witnessed arrests only, on the other hand, the only parameters that are not in the healthcare providers' hands are delay from discovery of OHCA to phone call which we assume to be short, and the actual quality of CPR provided by the witness which is actively sought to be improved by dispatcher assisted CPR.<sup>25,26</sup>

Previous studies have used the actual number of survivors per 100,000 inhabitants not taking geographical variance into account. This is, as depicted in Fig. 2, associated with a large difference in EMS response time, a key parameter in securing long-term survival.<sup>17,27–29</sup> To adjust for or stratify by EMS response is an irrelevant strategy when benchmarking administrative regions, as it is one of the key parameters of interest that the healthcare-divided administrative regions can influence in order to improve outcome.

When comparing with previous studies of rural versus urban another aspect to consider is the definition of rurality, which is innately relative, and followingly applicability of both present study and previous depends on this very definition. There is no uniform standard for defining rurality, and present study uses a definition based on the Danish geography and a granulation of hectare level, allowing a minimum population density corresponding to 180 per

km<sup>2</sup>. Correspondingly, categories were set to [180–400), [400–1200) and  $\geq 1200$  pr km<sup>2</sup> where previous studies have defined the most rural categories with a maximum of between 10 and 663.<sup>18–20,22,23,30</sup>

The choice to live rurally alone might not entirely be a matter of choice, as it is influenced by both social and economic capabilities, but it is a parameter that the healthcare-divided administrative regions and the EMS cannot be held accountable for. Interestingly, the hermitization is most common in the most densely populated healthcare-divided administrative region, the Capital Region.<sup>31</sup>

The health care system is already trying to mitigate the possible consequences of potential prolonged EMS response times in more rural areas by initiating a number of citizen responder programs. This is true both in Denmark and internationally.<sup>32–35</sup> Whether or not this is part of the explanation for the absence of difference in survival despite the longer EMS response times as uncovered in this study remains to be explored.

### Strengths

This study was performed on a national scale, with inclusion criteria that is uniform across all healthcare-divided administrative regions. Furthermore, each patient chart is subsequently manually validated by health care professionals to ensure correctness of inclusion and each variable. As such, not only is capture as complete as can be, but data is also of high quality.

### Limitations

First, only including witnessed arrests limits the study population. We do, however, argue that this exact population, regardless of size, is the one best suited for the purpose of this study.

Second, what happens at the site of arrest during the EMS response time is unaccounted for, and might influence outcome.

Third, some cells were defined by a coordinate in a south-eastern shoreline and thus could not be linked to a healthcare-divided administrative region, as shoreline has no such geographical definition. This will, however, only affect the summation of cells within each healthcare-divided administrative region and not OHCA data, as these allow tying each OHCA to a region and a cell.

Fourth, the health-care system in Denmark is not to be directly compared to the health-care system in every other setup, neither in terms of pre-hospital setup nor post-resuscitative care. This is especially true when comparing to other countries that might not have a publicly-financed health care systems, and comparative research is required in different health-care in before assuming applicability.

Fifth, this study did not include analysis of population-centered data, which could in part introduce bias. Further studies should explore the impact difference in age, socioeconomic status and burden of comorbidity across area categories.

Sixth, while Danish Society of Cardiologists publish nationwide recommendation for post-resuscitative care, cross-regional differences in specific practices for which we have not accounted may occur.

---

## Conclusion

Our study shows that in Denmark, despite longer EMS response times to residential OHCA in rural areas, survival is not significantly different from OHCA in urban areas of Denmark, and regional

differences across cell groups was absent. Only arrests that happened in public locations had a significantly higher survival rate.

## Declaration of Competing Interest

The authors declare that they have no known competing financial interests or personal relationships that could have appeared to influence the work reported in this paper.

## Acknowledgments

We would like to extend our sincerest thanks to the Emergency Medical Services personnel in Denmark who have completed the case report forms for the Danish Cardiac Arrest Register and to the board of the Danish Cardiac Arrest Registry for facilitating the data collection and usage. Further thanks to Ambition for facilitating use of geographical data.

## Funding sources

The Danish Cardiac Arrest registry and this study are supported by the Danish Foundation TrykFonden.

## Appendix A. Supplementary material

Supplementary data to this article can be found online at <https://doi.org/10.1016/j.resplu.2022.100208>.

## REFERENCES

1. Ten Programs – Global Resuscitation Alliance <https://www.globalresuscitationalliance.org/ten-programs/> [accessed July 6, 2021].
2. Bases. <https://www.akutlaegehelikopter.dk/en/about-us/bases/> [accessed January 10, 202].
3. Andersen MS, Johnsen SP, Sørensen JN, Jepsen SB, Hansen JB, Christensen EF. Implementing a nationwide criteria-based emergency medical dispatch system: a register-based follow-up study. *Scand J Trauma Resusc Emerg Med* 2013;21:53. <https://doi.org/10.1186/1757-7241-21-53>.
4. Danske Regioner - Regional Denmark. <https://www.regioner.dk/services/in-english/regional-denmark> [accessed August 10, 2021]
5. Gantzel Nielsen C, Andelius LC, Hansen CM, et al. Bystander interventions and survival following out-of-hospital cardiac arrest at Copenhagen International Airport. *Resuscitation* 2021;162:381–7. <https://doi.org/10.1016/j.resuscitation.2021.01.039>.
6. R Core Team. *R*. R Foundation for Statistical Computing; 2021. <https://www.R-project.org/>.
7. Kahle D, Wickham H. *R Package “Ggmap.”*; 2005. <http://journal.r-project.org/archive/2013-1/kahle-wickham.pdf>.
8. Harrell Jr Frank E. With contributions from Charles Dupont and many others. *R Package “Hmisc.”*; 2021. <https://CRAN.R-project.org/package=Hmisc>.
9. Hadley Wickham and Evan Miller. *R Package “Haven.”*; 2021. <https://CRAN.R-project.org/package=haven>.
10. Dowe Matt, Srinivasan Arun. *R Package “Data.Table.”*; 2021. <https://CRAN.R-project.org/package=data.table>.
11. Pebesma EJ, Bivand RS. *R Package “Sp.”*; 2005. <https://cran.r-project.org/doc/Rnews/>.
12. Bivand Roger, Keitt Tim, Rowlingson Barry. *R Package “Rgdal.”*; 2021. <https://CRAN.R-project.org/package=rgdal>.
13. RStudio Team. *RStudio*. RStudio; 2021. <http://www.rstudio.com/>.
14. Folke F, Gislason GH, Lippert FK, et al. Differences Between Out-of-Hospital Cardiac Arrest in Residential and Public Locations and Implications for Public-Access Defibrillation. *Circulation* 2010;122:623–30. <https://doi.org/10.1161/CIRCULATIONAHA.109.924423>.
15. Sondergaard KB, Wissenberg M, Gerds TA, et al. Bystander cardiopulmonary resuscitation and long-term outcomes in out-of-hospital cardiac arrest according to location of arrest. *Eur Heart J* 2019;40:309–18. <https://doi.org/10.1093/eurheartj/ehy687>.
16. Hightower D, Thomas SH, Stone CK, Dunn K, March JA. Decay in quality of closed-chest compressions over time. *Ann Emerg Med* 1995;26:300–3. [https://doi.org/10.1016/s0196-0644\(95\)70076-5](https://doi.org/10.1016/s0196-0644(95)70076-5).
17. Shahzleen R, Mads W, Fredrik F, et al. Association of Bystander Cardiopulmonary Resuscitation and Survival According to Ambulance Response Times After Out-of-Hospital Cardiac Arrest. *Circulation* 2016;134:2095–104. <https://doi.org/10.1161/CIRCULATIONAHA.116.024400>.
18. Møller SG, Rajan S, Møller-Hansen S, et al. Pre-hospital factors and survival after out-of-hospital cardiac arrest according to population density, a nationwide study. *Resusc Plus* 2020;4. <https://doi.org/10.1016/j.resplu.2020.100036> 100036.
19. Nehme Z, Andrew E, Cameron PA, et al. Population density predicts outcome from out-of-hospital cardiac arrest in Victoria, Australia. *Med J Aust* 2014;200:471–5. <https://doi.org/10.5694/mja13.10856>.
20. Yasunaga H, Miyata H, Horiguchi H, et al. Population density, call-response interval, and survival of out-of-hospital cardiac arrest. *Int J Health Geogr* 2011;10:26. <https://doi.org/10.1186/1476-072X-10-26>.
21. Masterson S, Wright P, O'Donnell C, et al. Urban and rural differences in out-of-hospital cardiac arrest in Ireland. *Resuscitation* 2015;91:42–7. <https://doi.org/10.1016/j.resuscitation.2015.03.012>.
22. Mathiesen WT, Bjørshol CA, Kvaløy JT, Søreide E. Effects of modifiable prehospital factors on survival after out-of-hospital cardiac arrest in rural versus urban areas. *Crit Care* 2018;22. <https://doi.org/10.1186/s13054-018-2017-x>.
23. Strömsöe A, Svensson L, Claesson A, Lindkvist J, Lundström A, Herlitz J. Association between population density and reported incidence, characteristics and outcome after out-of-hospital cardiac arrest in Sweden. *Resuscitation* 2011;82:1307–13. <https://doi.org/10.1016/j.resuscitation.2011.04.025>.
24. Hsu YC, Wu WT, Huang JB, Lee KH, Cheng FJ. Association between prehospital prognostic factors and out-of-hospital cardiac arrest: Effect of rural-urban disparities. *Am J Emerg Med* 2020;30950–5. <https://doi.org/10.1016/j.ajem.2020.10.054>. Published online October 27, 2020:S0735-6757(20)30950-5.
25. Hardeland C, Claesson A, Blom MT, et al. Description of call handling in emergency medical dispatch centres in Scandinavia: recognition of out-of-hospital cardiac arrests and dispatcher-assisted CPR. *Scand J Trauma Resusc Emerg Med* 2021;29:88. <https://doi.org/10.1186/s13049-021-00903-4>.
26. Rasmussen SE, Nebsbjerg MA, Krogh LQ, et al. A novel protocol for dispatcher assisted CPR improves CPR quality and motivation among rescuers-A randomized controlled simulation study. *Resuscitation* 2017;110:74–80. <https://doi.org/10.1016/j.resuscitation.2016.09.009>.
27. Holmén J, Herlitz J, Ricksten S, et al. Shortening Ambulance Response Time Increases Survival in Out-of-Hospital Cardiac Arrest. *J Am Heart Assoc Cardiovasc Cerebrovasc Dis* 2020;9. <https://doi.org/10.1161/JAHA.120.017048>.
28. Bürger A, Wnent J, Bohn A, et al. The Effect of Ambulance Response Time on Survival Following Out-of-Hospital Cardiac Arrest. *Dtsch Arzteblatt Int* 2018;115:541–8. <https://doi.org/10.3238/arztebl.2018.0541>.
29. Park JH, Song KJ, Shin SD, Hong KJ. Does second EMS unit response time affect outcomes of OHCA in multi-tiered system? A



- nationwide observational study. *Am J Emerg Med* 2021;42:161–7. <https://doi.org/10.1016/j.ajem.2020.02.018>.
30. Park JH, Ro YS, Shin SD, Song KJ, Hong KJ, Kong SY. Dispatcher-assisted bystander cardiopulmonary resuscitation in rural and urban areas and survival outcomes after out-of-hospital cardiac arrest. *Resuscitation* 2018;125:1–7. <https://doi.org/10.1016/j.resuscitation.2018.01.026>.
31. Wanscher AHM. Andelen af danskere på mindst 65 år, der bor alene, er historisk lav. <https://www.dst.dk/da/Statistik/bagtal/2019/2019-23-12-aeldre-der-bor-alene> [accessed August 31, 2021].
32. Andelius L, Malta Hansen C, Lippert FK, et al. Smartphone Activation of Citizen Responders to Facilitate Defibrillation in Out-of-Hospital Cardiac Arrest. *J Am Coll Cardiol* 2020;76:43–53. <https://doi.org/10.1016/j.jacc.2020.04.073>.
33. Metelmann C, Metelmann B, Kohnen D, et al. Smartphone-based dispatch of community first responders to out-of-hospital cardiac arrest - statements from an international consensus conference. *Scand J Trauma Resusc Emerg Med* 2021;29:29. <https://doi.org/10.1186/s13049-021-00841-1>.
34. Scquizzato T, Pallanch O, Belletti A, et al. Enhancing citizens response to out-of-hospital cardiac arrest: A systematic review of mobile-phone systems to alert citizens as first responders. *Resuscitation* 2020;152:16–25. <https://doi.org/10.1016/j.resuscitation.2020.05.006>.
35. Pijls RWM, Nelemans PJ, Rahel BM, Gorgels APM. A text message alert system for trained volunteers improves out-of-hospital cardiac arrest survival. *Resuscitation* 2016;105:182–7. <https://doi.org/10.1016/j.resuscitation.2016.06.006>.