

Sentinel surveillance and epidemiology of *Clostridioides difficile* in Denmark, 2016 to 2019

Persson, Søren; Nielsen, Hans Linde; Coia, John Eugenio; Engberg, Jørgen; Olesen, Bente Scharvik; Engsbø, Anne Line; Petersen, Andreas Munk; Holt, Hanne Marie; Lemming, Lars; Marmolin, Ea Sofie; Søndergaard, Turid Snøkloth; Andersen, Leif Percival; Jensen, Mie Birgitte Frid; Wiuf, Camilla; Sørensen, Gitte; Nielsen, Sofie Holtsmark; Nielsen, Eva Møller

Published in:

Eurosurveillance (Online Edition)

DOI (link to publication from Publisher):

[10.2807/1560-7917.ES.2022.27.49.2200244](https://doi.org/10.2807/1560-7917.ES.2022.27.49.2200244)

Creative Commons License

CC BY 4.0

Publication date:

2022

Document Version

Publisher's PDF, also known as Version of record

[Link to publication from Aalborg University](#)

Citation for published version (APA):

Persson, S., Nielsen, H. L., Coia, J. E., Engberg, J., Olesen, B. S., Engsbø, A. L., Petersen, A. M., Holt, H. M., Lemming, L., Marmolin, E. S., Søndergaard, T. S., Andersen, L. P., Jensen, M. B. F., Wiuf, C., Sørensen, G., Nielsen, S. H., & Nielsen, E. M. (2022). Sentinel surveillance and epidemiology of *Clostridioides difficile* in Denmark, 2016 to 2019. *Eurosurveillance (Online Edition)*, 27(49), Article 2200244. <https://doi.org/10.2807/1560-7917.ES.2022.27.49.2200244>

General rights

Copyright and moral rights for the publications made accessible in the public portal are retained by the authors and/or other copyright owners and it is a condition of accessing publications that users recognise and abide by the legal requirements associated with these rights.

- Users may download and print one copy of any publication from the public portal for the purpose of private study or research.
- You may not further distribute the material or use it for any profit-making activity or commercial gain
- You may freely distribute the URL identifying the publication in the public portal -

Take down policy

If you believe that this document breaches copyright please contact us at vbn@aub.aau.dk providing details, and we will remove access to the work immediately and investigate your claim.

Downloaded from vbn.aau.dk on: December 04, 2025

Sentinel surveillance and epidemiology of *Clostridioides difficile* in Denmark, 2016 to 2019

Søren Persson¹, Hans Linde Nielsen^{2,3}, John Eugenio Coia^{4,5}, Jørgen Engberg⁶, Bente Scharvik Olesen⁷, Anne Line Engsbro⁸, Andreas Munk Petersen^{8,9}, Hanne Marie Holt¹⁰, Lars Lemming¹¹, Ea Sofie Marmolin¹², Turid Snekløth Søndergaard¹³, Leif Percival Andersen¹⁴, Mie Birgitte Frid Jensen¹, Camilla Wiuff⁴, Gitte Sørensen¹, Sofie Holtsmark Nielsen¹, Eva Møller Nielsen¹

1. Department of Bacteria, Parasites and Fungi, Statens Serum Institut, Copenhagen, Denmark
2. Department of Clinical Microbiology, Aalborg University Hospital, Aalborg, Denmark
3. Department of Clinical Medicine, Aalborg University, Aalborg, Denmark
4. Department of Clinical Microbiology, Esbjerg Hospital, University of Southern Denmark, Esbjerg, Denmark
5. Department of Regional Health Research IRS, University of Southern Denmark, Esbjerg, Denmark
6. Department of Clinical Microbiology, Zealand University Hospital, Køge, Denmark
7. Department of Clinical Microbiology, Copenhagen University Hospital – Herlev and Gentofte, Herlev, Denmark
8. Department of Clinical Microbiology, Copenhagen University Hospital Hvidovre, Hvidovre, Denmark
9. Department of Gastroenterology, Copenhagen University Hospital Hvidovre, Hvidovre, Denmark
10. Department of Clinical Microbiology, Odense University Hospital, Odense, Denmark
11. Department of Clinical Microbiology, Aarhus University Hospital, Aarhus, Denmark
12. Department of Clinical Microbiology, Vejle Hospital, Vejle, Denmark
13. Department of Clinical Microbiology, Sønderjylland Hospital, Aabenraa, Denmark
14. Department of Clinical Microbiology, Copenhagen University Hospital (Rigshospitalet), Copenhagen, Denmark

Correspondence: Søren Persson (spn@ssi.dk)

Citation style for this article:

Persson Søren, Nielsen Hans Linde, Coia John Eugenio, Engberg Jørgen, Olesen Bente Scharvik, Engsbro Anne Line, Petersen Andreas Munk, Holt Hanne Marie, Lemming Lars, Marmolin Ea Sofie, Søndergaard Turid Snekløth, Andersen Leif Percival, Jensen Mie Birgitte Frid, Wiuff Camilla, Sørensen Gitte, Nielsen Sofie Holtsmark, Nielsen Eva Møller. Sentinel surveillance and epidemiology of *Clostridioides difficile* in Denmark, 2016 to 2019. Euro Surveill. 2022;27(49):pii=2200244. <https://doi.org/10.2807/1560-7917.ES.2022.27.49.2200244>

Article submitted on 09 Mar 2022 / accepted on 06 Jul 2022 / published on 08 Dec 2022

Background: Since 2008, Danish national surveillance of *Clostridioides difficile* has focused on binary toxin-positive strains in order to monitor epidemic types such as PCR ribotype (RT) 027 and 078. Additional surveillance is needed to provide a more unbiased representation of all strains from the clinical reservoir. **Aim:** Setting up a new sentinel surveillance scheme for an improved understanding of type distribution relative to time, geography and epidemiology, here presenting data from 2016 to 2019. **Methods:** For 2–4 weeks in spring and autumn each year between 2016 and 2019, all 10 Danish Departments of Clinical Microbiology collected faecal samples containing toxigenic *C. difficile*. Isolates were typed at the national reference laboratory at Statens Serum Institut. The typing method in 2016–17 used tandem-repeat-sequence typing, while the typing method in 2018–19 was whole genome sequencing. **Results:** During the study period, the sentinel surveillance scheme included ca 14–15% of all Danish cases of *C. difficile* infections. Binary toxin-negative strains accounted for 75% and 16 of the 20 most prevalent types. The most common sequence types (ST) were ST2/13 (RT014/020) (19.5%), ST1 (RT027) (10.8%), ST11 (RT078) (6.7%), ST8 (RT002) (6.6%) and ST6 (RT005/117) (5.1%). The data also highlighted geographical differences, mostly related to ST1 and temporal decline of ST1 ($p=0.0008$) and the increase of ST103 ($p=0.002$), ST17 ($p=0.004$) and ST37 ($p=0.003$), the latter three binary toxin-negative. **Conclusion:** Sentinel surveillance allowed nationwide monitoring of geographical differences and temporal

changes in *C. difficile* infections in Denmark, including emerging types, regardless of binary toxin status.

Introduction

Clostridioides difficile infection (CDI) is the leading cause of antibiotic-associated diarrhoea and a common nosocomial pathogen, often leading to severe and recurrent infections [1]. Since the beginning of the millennium, several large hospital outbreaks have been identified, mostly in the United States (US) and Europe, associated with the global spread of the PCR ribotype (RT) 027 (multi locus sequence type 1) (ST1) as the predominant type [2–4]. A number of other types have also been implicated as epidemic strains [5] and studies have observed an increasing number of community acquired CDIs of possible zoonotic origin [6,7]. The first registered outbreak of ST1(RT027) in Denmark was a small outbreak in the western part of the country between 2006 and 2007 [8], and soon thereafter, larger outbreaks were identified at major hospitals in the eastern part of Denmark [9].

In Denmark, departments of clinical microbiology (DCMs) located at 10 major hospitals, perform the primary diagnostics and local surveillance of all *C. difficile* cases. In order to monitor the national epidemiology of ST1(RT027) and other binary toxin-positive strains, guidelines were issued in 2008 by the Danish Health Authority for DCMs to submit faecal samples or bacterial isolates to the national reference laboratory at Statens Serum Institut (SSI), Copenhagen under the

following criteria: (i) binary toxin-positive; (ii) severe clinical manifestations; (iii) part of an outbreak (iv) moxifloxacin resistance. These positive samples then underwent further typing.

Since several reports have shown that strains without the binary toxin are important in terms of disease burden, prevalence, increasing community acquired CDI, multidrug resistance (MDR) and epidemic potential [10–12], a sentinel surveillance was initiated in 2016 as an addition to the existing surveillance. The sentinel surveillance is a compromise between cost and a representativeness of cases. It involves all DCMs submitting all toxigenic isolates or faecal samples (minimum positive for gene(s) encoding *C. difficile* toxin A (*tcdA*) and/or B (*tcdB*) for typing at SSI during a 2–4 weeks period in both the spring and the autumn. Here, we present the data from 4 years (2016–2019) of sentinel surveillance of *C. difficile*.

Methods

Settings, inclusion criteria and diagnostics

The Danish healthcare system, where all citizens have free access to public healthcare, operates across three political and administrative levels: the state, the regions and the municipalities. The five geographical regions: North Denmark Region (containing 1 DCM), Central Denmark Region (containing 1 DCM), Region of Southern Denmark (containing 4 DCMs), Region Zealand (containing 1 DCM) and Capital Region of Denmark (containing 3 DCMs) are responsible for the hospital care and healthcare services provided by general practitioners. The DCMs receive samples from hospitals and general practitioners. However, some local differences exist regarding patient inclusion criteria and diagnostic methods. Briefly, stool samples are collected from patients suspected of CDI based on clinical presentation. Some DCMs use additional criteria including age (i.e. patients ≥ 65 years), hospitalisation and antibiotic exposure. For primary diagnostic methods, seven DCMs use direct PCR, either in-house or commercial or a combination, two DCMs use culture and one uses PCR and culture on samples from hospitals and general practitioners, respectively (see Supplementary Table S1). Eight DCMs collect samples in containers without a buffer and two DCMs used FecalSwab (COPAN ITALIA, Brescia, Italy).

Samples for the sentinel surveillance were collected every year from 2016 to 2019 during spring (February to May) and autumn (October to November) in periods of either 2 weeks or 1 month (Table 1). The European Centre for Disease Prevention and Control (ECDC) case definition was applied [13], i.e. only the first sample was included if an identical type was identified from the same patient within 8 weeks of the first sample, but as a new case if a different type was identified. If the sampling time was more than 8 weeks apart, the same patient was included again as a new case. Children under 2 years were excluded from the general dataset,

and their samples were analysed separately. Samples received at SSI were processed within 24 hours. From faecal samples and faecal swabs (with enough material to colour the buffer), 10 μ L sterile loop of material was transferred to 2 mL sterile buffered saline. From faecal swabs with less material, the stick was transferred and briefly shaken in 2 mL sterile buffered saline. The saline suspension was heated at 62°C for 10 min and from there a 1 μ L sterile loop was streaked out on a ChromID *C. difficile* agar plate (bioMérieux, Craponne, France) and incubated at 37°C for 24 hours under anaerobic conditions. One single colony was subcultured on a 5% blood agar plate (SSI Diagnostica, Hillerød, Denmark) for 24 hours under anaerobic conditions and identification of *C. difficile* was confirmed by matrix-assisted laser desorption/ionisation time-of-flight (MALDI-TOF) mass spectrometry (Microflex LRF, Bruker, Billerica, US) using flexControl software version 3.1.65–4.1.80 with the library Compass for flexSeries 1.4 (Bruker, Billerica, US). Culturing was attempted twice and if unsuccessful, the sample was classified as non-cultivable.

Typing methods

In 2016 and 2017, DNA from bacterial colonies was extracted by Qiagen's Blood and Tissue kit (Qiagen, Hilden, Germany) with a prelysis containing 1.2% Triton X-100 and 20 mg/mL lysozyme for 1 hour at 37°C. Typing was performed by tandem repeat sequence typing (TRST) according to Zaiss et al. [14], and toxin profiling was performed by multiplex PCR [15]. In 2018 and 2019, isolates underwent whole genome sequencing (WGS) using the following procedure: colonies were lysed using proteinase K plus lysozyme and lysisostaphin followed by purification of genomic DNA using the DNA and Viral NA small volume kit on the MagNa Pure 96 system (Roche Diagnostics, Rotkreuz, Switzerland). DNA was diluted to 0.2–0.5 ng/ μ L using Quant-iT-dsDNA BR and HS assays (ThermoFisher Scientific, Waltham, US). Samples were prepared for Next Generation Sequencing on the Microlab STAR line liquid handling workstation from Hamilton (Hamilton, Reno, US), using Illumina Nextera XT library preparation (Illumina, San Diego, US). Samples (post library concentration ≥ 1 ng/ μ L) were pooled and normalised according to genome size and subsequently sequenced on the Illumina NextSeq platform (mid-out 2x150 bp cycles). Quality control of the data was performed using an in-house QC pipeline (<https://github.com/ssi-dk/bifrost>) before further downstream analyses. The publicly available database pubMLST.org [16] was applied and run with a local script, to determine sequence type (ST) directly from WGS data. BioNumerics version 7.6.3 (bioMérieux) was used to construct core genome multilocus sequence typing (cgMLST) phylogeny based on the analysis of 1,999 genes (Bionumerics scheme). When possible, PCR ribotypes were inferred from MLST and by phylogenetic comparison to reference strains in our local cgMLST database. Toxin profiling was part of the local script (Supplementary Table S2) mentioned

KEY PUBLIC HEALTH MESSAGE

What did you want to address in this study?

Before 2016, national surveillance focused on the major *Clostridioides difficile* outbreak strains and severe outcome patients. While this setup is essential for hospitals to react to outbreaks, we are unable to monitor all clinically relevant strains. We wanted to know if the use of an additional sentinel surveillance that included a subset of toxigenic strains from Danish clinical microbiology departments would allow us to obtain more comprehensive information.

What have we learnt from this study?

We found that strains without the binary toxin are dominating and increasing in prevalence, while other strains, in particular ST1/RT027 which can cause severe disease, differ greatly in geographical distribution.

What are the implications of your findings for public health?

It is possible to monitor the changing epidemiology of *C. difficile* by investigating a relatively small fraction of national cases (ca 15%) in a well-organised setup. This sentinel surveillance has been shown to be an informative and relatively inexpensive complement to national surveillance, and has now been implemented as a routine setup, supplementing information on outbreak strains obtained by the continuous national surveillance.

above, using 90% identity as limit for positive toxin identification.

Statistics

All statistical analysis was performed using R version 4.1.2 [17]. Simpson diversity index was calculated for each year and region using the diversity function (vegan version 2.5-7). The Simpson index was based on $D = \sum p_i^{-2}$, where p_i is the proportional abundance of type i , which returns $1/D$. Binomial regression was used to test whether the STs significantly increased or decreased over the 4 years. To test for significant age difference between ST1 and ST11(RT078), a two-sided Wilcoxon test was performed. To test for significant difference in sex, a two-sided chi-squared test was performed. Significance level of $p < 0.01$ was used.

Results

A total of 3,458 samples were collected between 2016 and 2019. Among these samples, 766 were excluded due to the following reasons: 295 could not be cultured, 85 were non-toxigenic (Supplementary Table S3), 198 were doublet samples, i.e. same patient, type and sample date, 112 were doublet samples from the same patient with the same type less than 8 weeks apart (the first sample was included) and 76 samples were from patients under 2 years of age (Supplementary Table S4). This left a dataset of 2,692 samples for further analysis (Supplementary Table S5).

The data presented here represents 4 years of sentinel surveillance, i.e. two periods of 2 weeks in

2016 and two periods of 1 month duration in 2017, 2018 and 2019 (Table 1). Complete nationwide *C. difficile* cases were available from the Danish Microbiological Database (MiBa) for 2018 (5,173) and 2019 (4,920), indicating that the sentinel surveillance made up ca 15% (2018) and 14% (2019) of all national diagnosed cases, with incidences of 89 per 100,000 and 85 per 100,000 inhabitants for 2018 and 2019, respectively. For the complete dataset, the median age was 73 years and 55.5% were females ($p = 0.00000002$). There were more females than males in each of the 4 years, the largest difference being seen in 2018 (see Table 1).

Analysis related to typing

ST was inferred from TRST in 2016–17 and directly from WGS in 2018–19. Table 2 shows the overall association between the two methods including corresponding RT and clades of the 20 major *C. difficile* types. ST2/13 was the most common type (19.5%) followed by ST1 (10.8%), ST11(RT078) (6.7%) and ST8 (6.6%). To correlate ST with the two different methods (TRST and RT) and because of different typing resolution within these methods, some STs reported here had to be expanded to include several types, i.e. RT014/020, RT014 and RT012 are reported as ST2/13, ST14/49 and ST21/54/139, respectively. ST11 contains two distinct main types not resolved by MLST, namely RT066 (TR067) and RT078 (TR070), both identified from WGS by cgMLST phylogeny and are here referred to as ST11(RT066) and ST11(RT078), respectively. Median age and percentage females were calculated for each ST (Table 2). We did not make direct comparisons regarding age distribution

TABLE 1

Characteristics of the *Clostridioides difficile* sentinel surveillance set up and patients included, by year, Denmark, 2016–2019

Characteristic	2016		2017		2018		2019	
Surveillance set up and results								
Duration (spring and autumn)	2x2 weeks		2x1 month		2x1 month		2x1 month	
Typing method	TRST		TRST		WGS/ST		WGS/ST	
Toxin gene detection	PCR		PCR		WGS script		WGS script	
Unique types/non-typable	54/6		75/22		77/7		76/9	
% <i>cdtAB</i> negative	70.0		65.6		77.1		79.5	
Simpson's diversity index	0.89		0.90		0.92		0.93	
Total number of samples (n = 2,692); unique patients (n = 2,594) ^a								
Age group (years)	n	%	n	%	n	%	n	%
2–17	9	4.6	14	1.8	22	2.8	18	2.6
18–44	51	11.7	84	10.8	76	9.8	82	11.7
45–64	90	20.6	132	17.0	140	18.0	120	17.1
≥ 65	286	65.6	548	70.4	539	69.4	481	68.6
Female	%	p value	%	p value	%	p value	%	p value
	54.6	0.06	53.9	0.03	58.2	0.000003	54.2	0.03
Age in years and number of patients	n	Median age (range)	n	Median age (range)	n	Median age (range)	n	Median age (range)
Females	238	74 (3–95)	419	74(2–99)	452	73(2–97)	380	73 (3–103)
Males	198	70 (2–95)	359	73 (2–97)	325	72(2–95)	321	72 (2–94)
All	436	72 (2–95)	778	73 (2–99)	777	73(2–97)	701	73(2–103)

cdtAB: genes encoding *C. difficile* binary toxin; MiBa: Danish Microbiological Database; ST: sequence type, TRST: tandem repeat sequence type, WGS: whole genome sequencing.

^a All presented age distributions are based on total number of samples, i.e. some patients participated more than once (see Results).

Spring data collection took place between February and May and autumn data collection took place between October and November.

between all STs, but patients who tested positive for ST1 (median age 77 years) were older than patients who tested positive for ST11(RTo78) (median age 71.5 years) ($p = 0.00003$).

Patients with multiple isolates

In total, 64 patients (2.5%) (129 isolates) carried two or three different types within an 8-weeks time period (Supplementary Table S6). Among these isolates, 41 (32.0%), 18 (14.1%) and 11 (8.6%) were ST1, ST2/13 and ST8, respectively. The time between sampling varied from 0 to 20 days with a median of one day. ST1 and ST2/13 were isolated from 12 patients and ST1 and ST8 from seven patients.

From 39 patients (1.5%) (81 isolates) the same type was isolated more than 8 weeks apart (Supplementary Table S7). Most common isolates were ST2/13 ($n = 11$, 13.6%) and ST11(RTo78) and ST1 (both $n = 5$, 6.2%). The median time span between sampling was 192 days (range 111–1,286 days). From 32 patients (1.3%) (64 isolates), different types were isolated more than 8 weeks apart (Supplementary Table S8). The median time span between sampling was 185 days (range 107–1,309 days). Most common isolates were ST2/13 ($n = 13$, 20.3%), ST6 ($n = 6$, 9.4%) and ST8 ($n = 4$, 6.3%).

Temporal analysis

The 20 most common STs (2,260/2,692, 84.0%) during each of the 4 years are shown in Figure 1. ST2/13 was the major type in all 4 years, ranging from 20.6% in 2016 to 18.9% in 2018. The second most common type was ST1 declining from 12.8% in 2016 to 7.8% in 2019 ($p = 0.0008$). Other major temporal changes 2016–2019 included an increase of ST103 from 0.7 to 3.1% ($p = 0.002$), ST17 from 0.9 to 3.3% ($p = 0.004$) and ST37 from 0.2 to 1.6% ($p = 0.003$). These temporal changes align with the overall increase in binary toxin-negative isolates, i.e. rising from 70% to 79.5%.

Geographical distribution of STs in Denmark

Figure 2 shows the 12 most prevalent types identified among the five regions. ST1 was the major *C. difficile* type in the Capital Region (25.8%), whereas ST2/13 was the major type in the remaining four regions (ranging from 12.9 to 23.9%). Most types showed large geographical differences, being most pronounced for ST1. The Simpson's diversity index based on the type distributions was calculated for each of the five regions for each of the 4 years (Table 1 and Supplementary Table S9). The diversity was higher in 2018–2019 (based on ST derived from WGS) compared with 2016–2017 (based on TRST).

TABLE 2

The 20 most common *Clostridioides difficile* strains in descending order of prevalence, and association between sequence type (ST), tandem repeat sequence type (TRST), PCR ribotype (RT), clade, presence of binary toxin (*cdtAB*) and patient characteristics, Denmark, 2016–2019

ST	TRST	RT	Clade	<i>cdtAB</i>	Samples		Median age of patient in years (range)	Females	
					n	%		n	%
2/13[102/110]	014[117/241]	014/020	1	Neg	525	19.5	71 (2–97)	302	57.5
1	027/210	027	2	Pos	290	10.8	77 (22–97)	163	56.2
11(RTo78)	070	078	5	Pos	180	6.7	71.5 (2–97)	103	57.2
8	002/115	002	1	Neg	179	6.6	74 (3–95)	107	60
6	051/052[042]	005/117	1	Neg	138	5.1	76 (2–96)	70	50.1
14/49	065[238/240/294]	014	1	Neg	134	5	69 (7–97)	69	51.5
21/54/139	012	012	1	Neg	99	3.7	74 (9–97)	54	54.5
3	001/072	001	1	Neg	89	3.3	73 (7–99)	46	51.7
103	043	043	1	Neg	80	3	77 (19–103)	41	51.3
5	016/092/094	023	3	Pos	68	2.5	72 (4–91)	36	52.9
55	048[211]	070	1	Neg	67	2.5	73 (2–95)	31	46.3
11(RTo66)	067	066	5	Pos	67	2.5	74 (16–98)	36	53.7
16	029/163	050	1	Neg	61	2.3	74 (17–94)	33	54.1
36	011/087	011	1	Neg	56	2.1	74 (21–90)	32	57.1
17	005	018	1	Neg	54	2	74 (21–92)	31	57.4
42	062	106	1	Neg	52	1.9	71.5 (3–94)	29	55.8
9	028	081	1	Neg	40	1.5	70.5 (2–91)	23	57.5
34/58	056	056/446	1	Neg	28	1	70 (3–93)	14	50
12	003/293	003	1	Neg	27	1	69 (2–88)	13	48.1
37	017	017	4	Neg	26	1	70.5 (12–93)	13	50

cdtAB: genes encoding *C. difficile* binary toxin; Pos: positive presence of *cdtAB*; Neg: negative to the presence of *cdtAB*; RT: PCR ribotype; ST: sequence type; TRST: tandem repeat sequence type

Association of ST, TRST, RT and clades observed in present study and from [14,44–47].

Common types are separated by a slash, while minor types observed in less than 2% are listed in square brackets and left out of the text for simplicity.

Children under 2 years

Children under 2 years of age ($n = 76$) were excluded from the dataset. Their samples predominantly harboured ST2/13 (43.4%), followed by ST8 and ST42 (both 6.6%). Only four isolates (one ST5 and three ST11) harboured the binary toxin genes (Supplementary Table S4).

Discussion

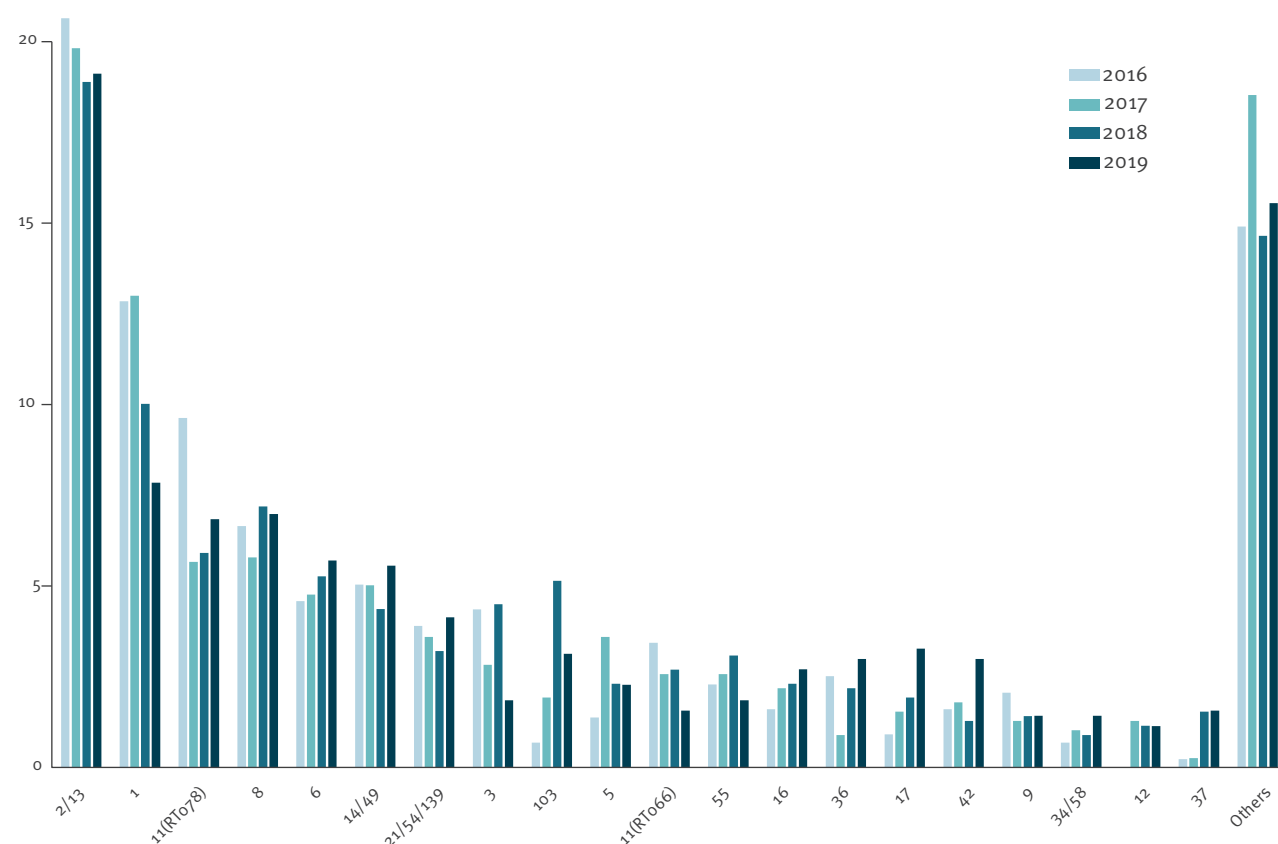
The present sentinel surveillance system enabled us to describe the demographics of cases and to detect regional and temporal differences, where ST2/13(RTo14/020) was the most common type in all regions, with the exception of ST1 in the Capital Region of Denmark. The type distribution of the present sentinel surveillance showed that 75% of all strains lacked the binary toxin gene and 80% (16/20) of the most common types were also binary toxin-negative, underlining the predominance of these strains. Additionally, the ratio of binary toxin-negative strains increased during 2017–2019 (Table 1), indicating a trend where these types have become more common. Females were over-represented in all of the 4 years, particularly in 2018 for unknown reasons.

Most prominent among binary toxin-negative strains were ST2/13(RTo14/020), ST8(RTo02), ST6(RTo05/117), ST14/49(RTo14), ST12/54/139(RTo12) and ST3(RTo01), consistent with several studies from Europe [18–21], Sweden [22,23], Scotland [24], the US [25–27], worldwide [28] and Australia [29]. ST2/13(RTo14/020) accounted for 19.5% of all isolates, and several other studies have found this type predominant and often associated with a community acquired origin [27,29]. A recent Danish study found this type common among dog faeces collected from rubbish bins in public parks in Copenhagen, and closely related (cgMLST) to human clinical isolates collected from the same area during the same time period [30].

ST1(RTo27) spread throughout many European countries, including Denmark, after its introduction in the early 2000s [4,9]. The highest numbers were observed in Denmark in 2011–13. However, due to the national surveillance programme targeting this particular type, and subsequent improved local infection prevention measures and control standards such as the introduction of bleach, non-touch room disinfection, isolation of suspected infected patients, antibiotic stewardship (restricted use of fluoroquinolones and cephalosporins) and the use of PCR to detect ST1(RTo27) markers,

FIGURE 1

The twenty most common *Clostridioides difficile* ST types listed left to right in order of prevalence by year for the whole country, Denmark, 2016–2019



national case numbers have declined over the last 8 years (data not shown). However, despite this reduction, this type still demonstrated endemic spread at hospitals in the Capital Region and at one hospital in the South Region.

ST11 contained two distinct subtypes determined by RT and TRST, namely, RTo78/TRo70 and RTo66/TRo67 respectively, here referred to as ST11(RTo78) and ST11(RTo66). ST11(RTo78) has been a predominant, worldwide clone, often described as hypervirulent as ST1(RTo27), community acquired, of zoonotic/porcine origin and affecting patients younger than the ST1(RTo27)-positive patients [31,32]. Here, ST11(RTo78) was the third most common type accounting for 6.7%, with a median patient age of 71.5 years, considerably lower than the median age of 77 years seen for ST1(RTo27).

The prevalence of ST103(RTo43) increased in the current study from 0.7% in 2016 to 5.1% in 2018. This type has previously been reported in a study from Asia [33]. The geographical distribution showed that half ($n = 40$) of the isolates originated in the Capital Region, but ST103(RTo43) was also relatively prevalent in the North and Zealand Regions. The reason for this clone's increase is at present unknown, but interestingly,

patients infected by this type had the same median patient age as those with ST1(RTo27), of 77 years.

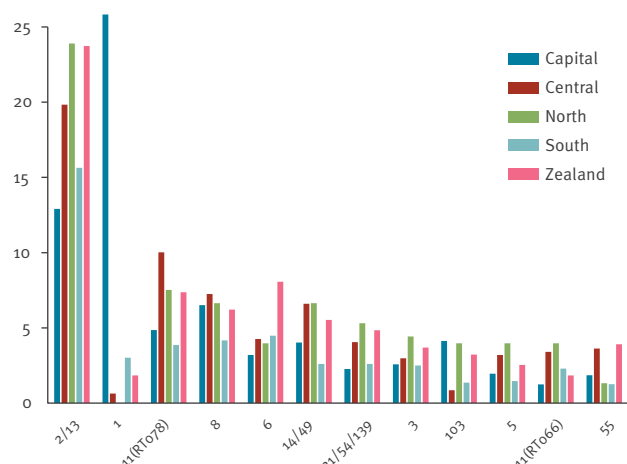
ST17(RTo18) increased in the present study from 0.9% in 2016 to 3.3% in 2019. This type has previously been found as a predominant type associated with hospital acquired infections in southern Europe, mainly Italy [11], and in Japan [34]. ST17(RTo18) has been proposed to have increased mortality due to the production of more toxins and adhesion molecules, in addition to being MDR and having an increased prevalence in elderly patients.

ST5(RTo23) was the only type belonging to clade 3 among the 20 most common strains, the third most common type with the binary toxin, and accounted for 2.5% of all *C. difficile* infections in the present study. It has been linked to severe clinical outcome comparable to ST1(RTo27) and ST11(RTo78), and the prevalence is consistent with previous studies [5,35].

ST37(RTo17) is one of a few types only producing TcdB, and has been associated with several outbreaks around the world and considered endemic in parts of Asia. Some reports have shown higher mortality and resistance towards several antibiotics [12,36]. ST37(RTo17) found in Denmark in 2018–19 through the sentinel surveillance, did have a 30-day overall mortality of

FIGURE 2

The twelve most prevalent *Clostridioides difficile* ST types and their geographical distribution in per cent within the five regions of Denmark, 2016–2019



32% and was genotypic resistant towards fluoroquinolones, aminoglycosides, tetracycline, macrolides and rifampicin [37]. The prevalence of ST37(RTo17) was found to increase from 0.2% (2016) to 1.6% (2019) in the present study, and as such is now being followed closely through the national surveillance programme.

Children younger than 2 years are usually not considered prone to CDI, mainly due to immature toxin receptors in the gut [38] and therefore, this age group was excluded from the present dataset. Still, this age group can carry *C. difficile* and studies have found RT014/020 to be common among children under 2 years [39,40]. This phenomenon was in agreement with the present study where we reported 43% of all *C. difficile* strains in this age group to be ST2/13(RTo14/020).

In 2013, we changed typing method from PCR ribotyping to TRST because TRST generated easy and exact interpretation from Sanger sequencing of the two tandem-repeat regions. In 2018, we changed to WGS as this had become the predominant method in our department and facilitated new and more detailed typing analysis. Therefore, we changed the typing scheme to 7-locus MLST, as this is easily extracted from the WGS data and allows direct comparison to international studies using the same nomenclature. Regarding backward traceability, some types were difficult to compare between the three typing methods because: (i) they all have unique resolution; (ii) they do not always translate one to one; (iii) new types are constantly evolving and (iv) corresponding types are sometimes reported differently. Therefore, the associations listed in Table 2 are not to be considered ubiquitous, but are what we observed from our analysis and what has been reported in the literature.

This study was not designed to investigate reinfections and recurrences, as we only included samples during two fixed periods per year. Still, a number of patients

participated in the study with more than one isolate and a number of observations can be made. Among patients with different types less than 8 weeks apart there was an overrepresentation of ST1(RTo27) (32.0%). All of those originated from one particular DCM in the ST1(RTo27)-endemic area of the Capital Region and is therefore attributed to the higher local prevalence of ST1 and a more extensive test strategy for *C. difficile*. Among patients with an identical type of *C. difficile* more than 8 weeks apart, often associated with relapse infections, the type distribution resembled the general dataset with major types being ST2/13(RTo14/020), ST11(RTo78) and ST1(RTo27) as also observed by [23,41,42]. Among patients with different types more than 8 weeks apart, indicating reinfections, the types were dominated by the binary toxin-negative strains ST2/13(RTo14/020), ST6(RTo05/117) and ST8(RTo02), also common in the general dataset.

The present sentinel surveillance has some limitations: (i) loss of resolution when typing was obtained from two different methods; (ii) prevalence of low abundant types and Simpson's diversity index applied on two different typing methods must be interpreted with caution; (iii) data were only obtained from limited sentinel periods, missing out seasonal and other changes between the periods, including reduced continuity to follow individual patients with respect to multiple episodes; (iv) bias from individual DCMs using different patient inclusion criteria, i.e. no strict case definition as recommended by the ECDC [13]; (v) bias from individual DCMs using different diagnostic methods and sample collection and no DCM used the internationally recommended 2-step algorithm [43]. Still, a toxigenic *C. difficile* isolate was recovered from 89% of the samples received during the study, where most DCMs used PCR as the primary method, and others have argued that PCR diagnostics are suitable for surveillance purposes [29].

Conclusion

The sentinel surveillance presented here has been implemented as a routine part of the national surveillance programme for *C. difficile*. The present setup is a valuable tool as all 10 Danish DCMs participate, i.e. the entire country is included and it offers a more accurate and unbiased prevalence study of types, including binary toxin-negative strains, and visualises the temporal and geographical changes within 6-month periods. The production of WGS data on all isolates was initiated in 2018 in the national and sentinel surveillance programmes, and is of course costly, but allows for further characterisation of isolates for surveillance, as well for research without additional laboratory work. Currently, cgMLST is being used to investigate possible outbreaks and transmission events and the detection of relevant markers of antimicrobial resistance is under validation and will be included in our national surveillance in the near future.

Ethical statement

No ethical approval was required for this study since the data used were obtained as part of our routine surveillance.

Acknowledgements

We greatly acknowledge all technical staff at the 10 departments of clinical microbiology and SSI for excellent and persistent work and would like to thank Jan Wohlfahrt (Department of Epidemiology, SSI) for design of statistical analyses.

Conflict of interest

None declared.

Authors' contributions

SP organised the whole sentinel project, and made the first draft of the manuscript. SP, HLN, JE, BSO, ALE, HHM, LL and EMN made the design and planning of the project. HLN, JHE, BRSO, ALE, HHM, LL, JEC, ESM, TSS, LPA, AMP and CW were responsible for the local diagnostics, organisation, sample handling and data management. MBF, GS and SP did the data analysis, and SHN did the statistical analysis. All Authors revised the manuscript critically and approved the final version.

References

1. Czepliel J, Drózd M, Pituch H, Kuijper EJ, Perucki W, Mielimonka A, et al. Clostridium difficile infection: review. *Eur J Clin Microbiol Infect Dis*. 2019;38(7):1211-21. <https://doi.org/10.1007/s10096-019-03539-6> PMID: 30945014
2. Kuijper EJ, Coignard B, Tüll P, ESCMID Study Group for Clostridium difficile, EU Member States, European Centre for Disease Prevention and Control. Emergence of Clostridium difficile-associated disease in North America and Europe. *Clin Microbiol Infect*. 2006;12(Suppl 6):2-18. <https://doi.org/10.1111/j.1469-0691.2006.01580.x> PMID: 16965399
3. Warny M, Pepin J, Fang A, Killgore G, Thompson A, Brazier J, et al. Toxin production by an emerging strain of Clostridium difficile associated with outbreaks of severe disease in North America and Europe. *Lancet*. 2005;366(9491):1079-84. [https://doi.org/10.1016/S0140-6736\(05\)67420-X](https://doi.org/10.1016/S0140-6736(05)67420-X) PMID: 16182895
4. He M, Miyajima F, Roberts P, Ellison L, Pickard DJ, Martin MJ, et al. Emergence and global spread of epidemic healthcare-associated Clostridium difficile. *Nat Genet*. 2013;45(1):109-13. <https://doi.org/10.1038/ng.2478> PMID: 23222960
5. Bauer MP, Notermans DW, van Benthem BH, Brazier JS, Wilcox MH, Rupnik M, et al. Clostridium difficile infection in Europe: a hospital-based survey. *Lancet*. 2011;377(9759):63-73. [https://doi.org/10.1016/S0140-6736\(10\)61266-4](https://doi.org/10.1016/S0140-6736(10)61266-4) PMID: 21084111
6. Ofori E, Ramai D, Dhawan M, Mustafa F, Gasperino J, Reddy M. Community-acquired Clostridium difficile: epidemiology, ribotype, risk factors, hospital and intensive care unit outcomes, and current and emerging therapies. *J Hosp Infect*. 2018;99(4):436-42. <https://doi.org/10.1016/j.jhin.2018.01.015> PMID: 29410012
7. Brown AWW, Wilson RB. Clostridium difficile colitis and zoonotic origins-a narrative review. *Gastroenterol Rep (Oxf)*. 2018;6(3):157-66. <https://doi.org/10.1093/gastro/goy016> PMID: 30151199
8. Sørensen L, Mølbak K, Strøbaek S, Truberg Jensen K, Torpdahl M, Persson S, et al. The emergence of Clostridium difficile PCR ribotype 027 in Denmark-a possible link with the increased consumption of fluoroquinolones and cephalosporins? *Euro Surveill*. 2009;14(15):19176. <https://doi.org/10.2807/es.e14.15.19176-en> PMID: 19371514
9. Bacci S, St-Martin G, Olesen B, Bruun B, Olsen KE, Nielsen EM, et al. Outbreak of Clostridium difficile 027 in North Zealand, Denmark, 2008-2009. *Euro Surveill*. 2009;14(16):19183. <https://doi.org/10.2807/es.e14.16.19183-en> PMID: 19389341
10. Carlson TJ, Blasingame D, Gonzales-Luna AJ, Alnezary F, Garey KW. Clostridioides difficile ribotype 106: A systematic review of the antimicrobial susceptibility, genetics, and clinical outcomes of this common worldwide strain. *Anaerobe*. 2020;62:102142. <https://doi.org/10.1016/j.anaerobe.2019.102142> PMID: 32007682
11. Barbanti F, Spigaglia P. Microbiological characteristics of human and animal isolates of Clostridioides difficile in Italy: Results of the Istituto Superiore di Sanità in the years 2006-2016. *Anaerobe*. 2020;61:102136. <https://doi.org/10.1016/j.anaerobe.2019.102136> PMID: 31857201
12. Imwattana K, Knight DR, Kullin B, Collins DA, Putsathit P, Kiratisin P, et al. Clostridium difficile ribotype 017 - characterization, evolution and epidemiology of the dominant strain in Asia. *Emerg Microbes Infect*. 2019;8(1):796-807. <https://doi.org/10.1080/22221751.2019.1621670> PMID: 31138041
13. European Centre for Disease Prevention and Control (ECDC). European Surveillance of Clostridioides (Clostridium) difficile infections. Stockholm: ECDC; 2019. Available from: <https://www.ecdc.europa.eu/sites/default/files/documents/clostridium-difficile-infections-EU-surveillance-protocol-ver2.4.pdf>
14. Zaiss NH, Rupnik M, Kuijper EJ, Harmanus C, Michielsens D, Janssens K, et al. Typing Clostridium difficile strains based on tandem repeat sequences. *BMC Microbiol*. 2009;9(1):6. <https://doi.org/10.1186/1471-2180-9-6> PMID: 19133124
15. Persson S, Jensen JN, Olsen KE. Multiplex PCR method for detection of Clostridium difficile tcdA, tcdB, cdtA, and cdtB and internal in-frame deletion of tcdC. *J Clin Microbiol*. 2011;49(12):4299-300. <https://doi.org/10.1128/JCM.05161-11> PMID: 21976756
16. Jolley KA, Bray JE, Maiden MCJ. Open-access bacterial population genomics: BIGSdb software, the PubMLST.org website and their applications. *Wellcome Open Res*. 2018;3:124. <https://doi.org/10.12688/wellcomeopenres.14826.1> PMID: 30345391
17. R Core Team. R: A language and environment for statistical computing. R Foundation for Statistical Computing. Vienna: R Foundation for Statistical Computing; 2022. Available from: <https://www.R-project.org/>
18. Freeman J, Vernon J, Morris K, Nicholson S, Todhunter S, Longshaw C, et al. Pan-European longitudinal surveillance of antibiotic resistance among prevalent Clostridium difficile ribotypes. *Clin Microbiol Infect*. 2015 Mar;21(3):248 e9-16.
19. van Dorp SM, Kinross P, Gastmeier P, Behnke M, Kola A, Delmée M, et al. Standardised surveillance of Clostridium difficile infection in European acute care hospitals: a pilot study, 2013. *Euro Surveill*. 2016;21(29). <https://doi.org/10.2807/1560-7917.ES.2016.21.29.30293> PMID: 27472820
20. Davies KA, Ashwin H, Longshaw CM, Burns DA, Davis GL, Wilcox MH, EUCLID study group. Diversity of Clostridium difficile PCR ribotypes in Europe: results from the European, multicentre, prospective, biannual, point-prevalence study of Clostridium difficile infection in hospitalised patients with diarrhoea (EUCLID), 2012 and 2013. *Euro Surveill*. 2016;21(29). <https://doi.org/10.2807/1560-7917.ES.2016.21.29.30294> PMID: 27470194
21. Eyre DW, Davies KA, Davis G, Fawley WN, Dingle KE, De Maio N, et al. Two Distinct Patterns of Clostridium difficile Diversity Across Europe Indicating Contrasting Routes of Spread. *Clin Infect Dis*. 2018;67(7):1035-44. <https://doi.org/10.1093/cid/ciy252> PMID: 29659747
22. Rizzardi K, Norén T, Aspevall O, Mäkitalo B, Toepfer M, Johansson Å, et al. National Surveillance for Clostridioides difficile Infection, Sweden, 2009-2016. *Emerg Infect Dis*. 2018;24(9):1617-25. <https://doi.org/10.3201/eid2409.171658> PMID: 30124193
23. Sandell S, Rashid MU, Jorup-Rönström C, Ellström K, Nord CE, Weintraub A. Clostridium difficile recurrences in Stockholm. *Anaerobe*. 2016;38:97-102. <https://doi.org/10.1016/j.anaerobe.2016.01.005> PMID: 26802875
24. Banks A, Brown DJ, Mather H, Coia JE, Wiuff C. Sentinel community Clostridium difficile infection (CDI) surveillance in Scotland, April 2013 to March 2014. *Anaerobe*. 2016;37:49-53. <https://doi.org/10.1016/j.anaerobe.2015.12.008> PMID: 26708405
25. Waslawski S, Lo ES, Ewing SA, Young VB, Aronoff DM, Sharp SE, et al. Clostridium difficile ribotype diversity at six health care institutions in the United States. *J Clin Microbiol*. 2013;51(6):1938-41. <https://doi.org/10.1128/JCM.00056-13> PMID: 23554188
26. Gonzales-Luna AJ, Carlson TJ, Dotson KM, Poblete K, Costa G, Miranda J, et al. PCR ribotypes of Clostridioides difficile across Texas from 2011 to 2018 including emergence of ribotype 255. *Emerg Microbes Infect*. 2020;9(1):341-7. <https://doi.org/10.1080/22221751.2020.1721335> PMID: 32037964
27. Cheknis A, Johnson S, Chesnel L, Petrella L, Sambol S, Dale SE, et al. Molecular epidemiology of Clostridioides

- (Clostridium) difficile strains recovered from clinical trials in the US, Canada and Europe from 2006-2009 to 2012-2015. *Anaerobe*. 2018;53:38-42. <https://doi.org/10.1016/j.anaerobe.2018.05.009> PMID: 29886050
28. Martin JS, Monaghan TM, Wilcox MH. Clostridium difficile infection: epidemiology, diagnosis and understanding transmission. *Nat Rev Gastroenterol Hepatol*. 2016;13(4):206-16. <https://doi.org/10.1038/nrgastro.2016.25> PMID: 26956066
 29. Hong S, Putsathit P, George N, Hemphill C, Huntington PG, Korman TM, et al. Laboratory-Based Surveillance of Clostridium difficile Infection in Australian Health Care and Community Settings, 2013 to 2018. *J Clin Microbiol*. 2020;58(11):e01552-20. <https://doi.org/10.1128/JCM.01552-20> PMID: 32848038
 30. Björsdörff OG, Lindberg S, Kiil K, Persson S, Guardabassi L, Damborg P. Dogs are carriers of Clostridioides difficile lineages associated with human community-acquired infections. *Anaerobe*. 2021;67:102317. <https://doi.org/10.1016/j.anaerobe.2020.102317> PMID: 33418077
 31. Dingle KE, Didelot X, Quan TP, Eyre DW, Stoesser N, Marwick CA, et al. A Role for Tetracycline Selection in Recent Evolution of Agriculture-Associated Clostridium difficile PCR Ribotype 078. *MBio*. 2019;10(2):e02790-18. <https://doi.org/10.1128/mBio.02790-18> PMID: 30862754
 32. Walker AS, Eyre DW, Wyllie DH, Dingle KE, Griffiths D, Shine B, et al. Relationship between bacterial strain type, host biomarkers, and mortality in Clostridium difficile infection. *Clin Infect Dis*. 2013;56(11):1589-600. <https://doi.org/10.1093/cid/cit127> PMID: 23463640
 33. Riley TV, Collins DA, Karunakaran R, Kahar MA, Adnan A, Hassan SA, et al. High Prevalence of Toxigenic and Nontoxigenic Clostridium difficile Strains in Malaysia. *J Clin Microbiol*. 2018;56(6):e00170-18. <https://doi.org/10.1128/JCM.00170-18> PMID: 29563206
 34. Senoh M, Kato H, Fukuda T, Niikawa A, Hori Y, Hagiya H, et al. Predominance of PCR-ribotypes, 018 (smz) and 369 (trf) of Clostridium difficile in Japan: a potential relationship with other global circulating strains? *J Med Microbiol*. 2015;54(10):1226-36. <https://doi.org/10.1099/jmm.0.000149> PMID: 26238868
 35. Shaw HA, Preston MD, Vendrik KEW, Cairns MD, Browne HP, Stabler RA, et al. The recent emergence of a highly related virulent Clostridium difficile clade with unique characteristics. *Clin Microbiol Infect*. 2020;26(4):492-8. <https://doi.org/10.1016/j.cmi.2019.09.004> PMID: 31525517
 36. Collins DA, Sohn KM, Wu Y, Ouchi K, Ishii Y, Elliott B, et al. Clostridioides difficile infection in the Asia-Pacific region. *Emerg Microbes Infect*. 2019;9(1):42-52. <https://doi.org/10.1080/22221751.2019.1702480> PMID: 31873046
 37. Statens Serum Institut (SSI). Uge 24 – 2020. Stigning i Clostridioides (tidligere Clostridium) difficile ST37/PCR ribotype 017. [Increase of Clostridioides (former Clostridium) difficile ST37/PCR ribotype 017]. Copenhagen: SSI; 2020. Danish. Available from: <https://www.ssi.dk/aktuelt/nyhedsbreve/epi-nyt/2020/uge-24---2020>
 38. Boralí E, De Giacomo C. Clostridium Difficile Infection in Children: A Review. *J Pediatr Gastroenterol Nutr*. 2016;63(6):e130-40. <https://doi.org/10.1097/MPG.0000000000001264> PMID: 27182626
 39. van Dorp SM, Smajlović E, Knetsch CW, Notermans DW, de Greeff SC, Kuijper EJ. Clinical and Microbiological Characteristics of Clostridium difficile Infection Among Hospitalized Children in the Netherlands. *Clin Infect Dis*. 2017;64(2):192-8. <https://doi.org/10.1093/cid/ciw699> PMID: 27986664
 40. Adlerberth I, Huang H, Lindberg E, Åberg N, Hesselmar B, Saalman R, et al. Toxin-producing Clostridium difficile strains as long-term gut colonizers in healthy infants. *J Clin Microbiol*. 2014;52(1):173-9. <https://doi.org/10.1128/JCM.01701-13> PMID: 24172156
 41. Thomas E, Bémer P, Eckert C, Guillouzoic A, Orain J, Corvec S, et al. Clostridium difficile infections: analysis of recurrence in an area with low prevalence of 027 strain. *J Hosp Infect*. 2016;93(1):109-12. <https://doi.org/10.1016/j.jhin.2016.01.015> PMID: 26944905
 42. Sachsenheimer FE, Yang I, Zimmermann O, Wrede C, Müller LV, Gunka K, et al. Genomic and phenotypic diversity of Clostridium difficile during long-term sequential recurrences of infection. *Int J Med Microbiol*. 2018;308(3):364-77. <https://doi.org/10.1016/j.ijmm.2018.02.002> PMID: 29490877
 43. Crobach MJ, Planche T, Eckert C, Barbut F, Terveer EM, Dekkers OM, et al. European Society of Clinical Microbiology and Infectious Diseases: update of the diagnostic guidance document for Clostridium difficile infection. *Clin Microbiol Infect*. 2016;22(Suppl 4):S63-81. <https://doi.org/10.1016/j.cmi.2016.03.010> PMID: 27460910
 44. Martínez-Meléndez A, Morfin-Otero R, Villarreal-Treviño L, Baines SD, Camacho-Ortiz A, Garza-González E. Molecular epidemiology of predominant and emerging Clostridioides difficile ribotypes. *J Microbiol Methods*. 2020;175:105974. <https://doi.org/10.1016/j.mimet.2020.105974> PMID: 32531232
 45. Janežic S, Rupnik M. Genomic diversity of Clostridium difficile strains. *Res Microbiol*. 2015;166(4):353-60. <https://doi.org/10.1016/j.resmic.2015.02.002> PMID: 25700631
 46. Krutova M, Nyc O, Matejkova J, Allerberger F, Wilcox MH, Kuijper EJ. Molecular characterisation of Czech Clostridium difficile isolates collected in 2013-2015. *Int J Med Microbiol*. 2016;306(7):479-85. <https://doi.org/10.1016/j.ijmm.2016.07.003> PMID: 27519407
 47. Griffiths D, Fawley W, Kachrimanidou M, Bowden R, Crook DW, Fung R, et al. Multilocus sequence typing of Clostridium difficile. *J Clin Microbiol*. 2010;48(3):770-8. <https://doi.org/10.1128/JCM.01796-09> PMID: 20042623

License, supplementary material and copyright

This is an open-access article distributed under the terms of the Creative Commons Attribution (CC BY 4.0) Licence. You may share and adapt the material, but must give appropriate credit to the source, provide a link to the licence and indicate if changes were made.

Any supplementary material referenced in the article can be found in the online version.

This article is copyright of the authors or their affiliated institutions, 2022.