

## Cardiac rehabilitation and all-cause mortality in patients with heart failure

*a retrospective cohort study*

Buckley, Benjamin J R; Harrison, Stephanie L; Fazio-Eynullayeva, Elnara; Underhill, Paula; Sankaranarayanan, Rajiv; Wright, David J; Thijssen, Dick H J; Lip, Gregory Y H

*Published in:*

European Journal of Preventive Cardiology

*DOI (link to publication from Publisher):*

[10.1093/eurjpc/zwab035](https://doi.org/10.1093/eurjpc/zwab035)

*Publication date:*

2021

*Document Version*

Accepted author manuscript, peer reviewed version

[Link to publication from Aalborg University](#)

*Citation for published version (APA):*

Buckley, B. J. R., Harrison, S. L., Fazio-Eynullayeva, E., Underhill, P., Sankaranarayanan, R., Wright, D. J., Thijssen, D. H. J., & Lip, G. Y. H. (2021). Cardiac rehabilitation and all-cause mortality in patients with heart failure: a retrospective cohort study. *European Journal of Preventive Cardiology*, 28(15), 1704-1710. Article zwab035. <https://doi.org/10.1093/eurjpc/zwab035>

### General rights

Copyright and moral rights for the publications made accessible in the public portal are retained by the authors and/or other copyright owners and it is a condition of accessing publications that users recognise and abide by the legal requirements associated with these rights.

- Users may download and print one copy of any publication from the public portal for the purpose of private study or research.
- You may not further distribute the material or use it for any profit-making activity or commercial gain
- You may freely distribute the URL identifying the publication in the public portal -

### Take down policy

If you believe that this document breaches copyright please contact us at [vbn@aub.aau.dk](mailto:vbn@aub.aau.dk) providing details, and we will remove access to the work immediately and investigate your claim.

**Cardiac rehabilitation and all-cause mortality in patients with heart failure:  
A retrospective cohort study**

Benjamin J.R. Buckley, PhD<sup>1\*</sup>, Stephanie L. Harrison, PhD<sup>1</sup>, Elnara Fazio-Eynullayeva, MA<sup>2</sup>,  
Paula Underhill<sup>3</sup>, Rajiv Sankaranarayanan, PhD<sup>4</sup>, David J. Wright, MD<sup>1</sup>,  
Dick H.J. Thijssen, PhD<sup>5,6</sup>, Gregory Y.H. Lip, MD<sup>1,7</sup>

<sup>1</sup>Liverpool Centre for Cardiovascular Science, University of Liverpool and Liverpool Heart & Chest  
Hospital, Liverpool, United Kingdom

<sup>2</sup>TriNetX LLC., Cambridge, MA, United States

<sup>3</sup>TriNetX LLC., London, United Kingdom

<sup>4</sup>Liverpool Centre for Cardiovascular Science, University of Liverpool and Liverpool University  
Hospitals NHS Foundation Trust

<sup>5</sup>Liverpool Centre for Cardiovascular Science, Liverpool John Moores University, Liverpool, UK

<sup>6</sup>Research Institute for Health Science, Department of Physiology, Radboud university medical  
centerum, Nijmegen, The Netherlands

<sup>7</sup>Department of Clinical Medicine, Aalborg University, Aalborg, Denmark

**Manuscript wordcount 3000**

**\*Corresponding author**

Dr Benjamin Buckley, Liverpool Centre for Cardiovascular Science, University of Liverpool, William  
Henry Duncan Building, Liverpool, L7 8TX United Kingdom

Email: [Benjamin.Buckley@liverpool.ac.uk](mailto:Benjamin.Buckley@liverpool.ac.uk).

Phone: +44 (0)151 794 2000

## **Abstract**

### **Background**

Despite the benefits of exercise training in the secondary prevention of cardiovascular disease, there are conflicting findings for the impact of exercise-based cardiac rehabilitation (CR) on mortality for patients with heart failure (HF).

### **Methods**

A retrospective cohort study was conducted which utilised a global federated health research network, primarily in the United States. Patients with a diagnosis of HF were compared between those with and without an electronic medical record of CR and/or exercise programmes within 6-months of a HF diagnosis. Patients with HF undergoing exercise-based CR were propensity score matched to HF patients without exercise-based CR by age, sex, race, co-morbidities, medications, and procedures (controls). We ascertained 2-year incidence of all-cause mortality, hospitalisation, stroke, and atrial fibrillation.

### **Results**

Following propensity score matching, a total of 40,364 patients with HF were identified. Exercise-based CR was associated with 42% lower odds of all-cause mortality (odds ratio 0.58, 95% confidence interval (CI): 0.54-0.62), 26% lower odds of hospitalisation (0.74, 95% CI 0.71-0.77), 37% lower odds of incident stroke (0.63, 95% CI 0.51-0.79), and 53% lower odds of incident atrial fibrillation (0.47, 95% CI 0.4-0.55) compared to controls, after propensity score matching. The beneficial association of CR and exercise on all-cause mortality was consistent across all subgroups, including patients with HFrEF (0.52, 95% CI 0.48-0.56) and HFpEF (0.65, 95% CI 0.60-0.71).

### **Conclusions**

Exercise-based CR was associated with lower odds of all-cause mortality, hospitalisations, incident stroke and incident atrial fibrillation at 2-years follow-up for patients with HF (including patients with HFrEF and HFpEF).

**Keywords:** Cardiac rehabilitation; Heart failure; Exercise; Secondary prevention; Retrospective cohort.

## Introduction

Chronic heart failure (HF) is a growing global health challenge with increasing prevalence, and an economic burden in excess of USD 100 billion per annum, which will continue to rise with an ageing, expanding, and industrialising population.(1) Unplanned hospital admissions seem to be a key driver of the economic cost of HF on healthcare systems(1) and therefore present a primary target for preventative strategies.

At the individual level, patients with HF often suffer with fatigue, dyspnoea, and exercise intolerance(2), with at least one in five patients suffering with depression.(3) Furthermore, 5-year survival after a diagnosis of HF (typically with optimal pharmaceutical treatment) is only 27%, demonstrating only modest improvements in the 21<sup>st</sup> century compared to other serious conditions, such as cancer.(4) Thus, treatment pathways that alleviate mortality and morbidity as well as hospitalisations for patients with HF are critical to improving patient quality of life and minimising the economic burden on healthcare systems.

Exercise-based cardiac rehabilitation (CR) promotes secondary prevention of cardiovascular disease and adverse events and are an essential component of routine care for patients with acute coronary syndrome and those undergoing revascularisation (e.g. coronary artery bypass graft or percutaneous coronary intervention).(5, 6) In patients with coronary heart disease, exercise-based CR has been shown to improve exercise capacity, health-related quality of life, reduce hospitalisations, and depending on the source of evidence, reduce all-cause or cardiovascular-related mortality.(7-10) However, conflicting results have been reported related to the effects of CR in patients with HF.

The most recent (2019) Cochrane review in this topic (27 studies; 2,596 participants)(11) concluded that exercise-based CR 'probably' reduced the risk of hospital admissions and may confer clinically important improvements in health-related quality of life. However, the impact of CR on all-cause mortality for patients with HF was 'negligible'. Such mortality conclusions were limited due to many included trials having a small sample size, a small number of mortality events, and typically short follow-up periods (<12-months). Analysing six studies from this Cochrane review with >12-months follow-up, however, suggested a reduction in all-cause mortality (relative risk 0.88). In addition to primary data limitations to evaluate the effect of CR on mortality in patients with HF, it has been reported that patients who are female, older, and present with HF with preserved ejection fraction (HFpEF) are under-represented in the literature.(12) This raises various questions related to whether

HF patients benefit from CR in terms of risk for mortality, and whether these benefits can be generalised across HF subtypes.

Benefitting from access to a large online database, we explored the hypothesis that exercise-based CR has protective effects in patients diagnosed with HF to reduce risks for important clinical outcomes. The aim of the present study, using a global federated health research network, was therefore to compare 2-year all-cause mortality, hospitalisations, stroke, and atrial fibrillation (AF) in patients with HF and an electronic medical record (EMR) of exercise-based CR to propensity score matched patients with HF and no EMR of exercise-based CR. In addition, we also sought to stratify results for important patient subgroups, including patients with HFpEF.

## **Methods**

### *Study Design and Participants*

A retrospective observational study was conducted with data provided by TriNetX, a global federated health research network with access to EMRs from participating healthcare organisations including academic medical centres, specialty physician practices, and community hospitals, predominantly in the United States. HF was identified from International Classification of Diseases, Ninth and Tenth Revisions, Clinical Modification (ICD-9-CM, ICD-10-CM) codes in patient EMRs: 428.xx (Heart Failure) and I50.xx (Heart failure). Cardiac rehabilitation was identified from ICD-10-CM codes Z71.82 (Exercise counselling), HCPCS codes S9451 (Exercise classes, non-physician provider, per session) and S9472 (CR program, non-physician provider, per diem), or Current Procedural Terminology (CPT) codes 93797 (Physician or other qualified healthcare professional services for outpatient CR) and 1013171 (Physician or other qualified health care professional services for outpatient CR). Correspondingly, these exercise-based CR codes were excluded in the controls. This study is reported as per the Strengthening the Reporting of Observational Studies in Epidemiology (STROBE) guidelines.<sup>(13)</sup> As a federated network, research studies using the TriNetX research network do not require ethical approvals as no patient identifiable identification is received.

### *Data Collection*

The TriNetX network was searched on 28th October 2020 and an anonymised dataset of patients with HF was acquired. The exercise-based CR cohort were aged  $\geq 18$  years with exercise-based CR recorded in EMRs within 6-months of a HF diagnosis. Controls were aged  $\geq 18$  years with a diagnosis of HF and no history of CR or exercise programmes in EMRs. For both the exercise-based CR cohort and controls, patients with HF were identified in EMRs from at least 2-years prior to the search date to ensure a minimum follow-up of 2-years from HF diagnosis (18-months from CR). At the time of the search, 40

participating healthcare organisations had data available for patients who met the study inclusion criteria.

### *Statistical Analysis*

All statistical analyses were completed on the TriNetX online platform. Baseline characteristics were compared using chi-squared tests for categorical variables and independent-sample t-tests for continuous variables. Current exercise-based CR provision is typically reserved for cardiovascular patients following an acute coronary syndrome, heart failure, or those undergoing a revascularisation procedure (coronary artery bypass graft or planned percutaneous coronary intervention). Thus, propensity score matching (PSM) was used to control for these differences in the two cohorts. CR patients and controls were 1:1 PSM using logistic regression for age at HF diagnosis, sex, race, hypertensive diseases, ischaemic heart diseases, cerebrovascular diseases, diabetes mellitus, chronic kidney disease, cardiovascular procedures (e.g. cardiography, echocardiography, cardiac catheterisation, cardiac devices, electrophysiological procedures), and cardiovascular medications (e.g. beta-blockers, antiarrhythmics, diuretics, antilipemic agents, antianginals, calcium channel blockers, ACE inhibitors). These variables were chosen because they are established risk factors for HF and/or mortality or were significantly different between the two cohorts. The TriNetX platform uses 'greedy nearest-neighbour matching' with a caliper of 0.1 pooled standard deviations. Following PSM, logistic regressions produced odds ratios with 95% confidence intervals (CIs) for 2-year incidence of all-cause mortality, hospitalisation, and stroke, comparing exercise-based CR with controls. Additional sub-analyses (following PSM) were conducted to produce odds ratios with 95% CIs to stratify results by population subgroups including sex, body mass index (BMI), history of cardiovascular events, and HF subtype (HFpEF and HFrEF) on the odds of all-cause mortality between the exercise-based CR cohort and controls. Statistical significance was set at  $P<0.05$ .

## **Results**

### *Patient characteristics*

In total, 1,225,318 patients from 40 healthcare organisations had a diagnosis of HF at least 2-years before the search date with no history of CR and exercise programmes (controls) and 20,182 patients had a diagnosis of HF at least 2-years ago with an EMR of CR and/or exercise programmes within 6-months of diagnosis (CR and exercise cohort). The exercise-based CR cohort was distributed between the four large Census Bureau designated regions of the United States as follows: 4% ( $n=721$ ) in the Northeast, 14% ( $n=2,973$ ) in the Midwest, 45% ( $n=9,283$ ) in the South, 29% ( $n=6,014$ ) in the West, and 8% ( $n=1,558$ ) were unknown. The control cohort was also distributed between the four large Census

Bureau designated regions of the United States as follows: 12% ( $n=146,045$ ) in the Northeast, 12% ( $n=142,857$ ) in the Midwest, 46% ( $n=564,687$ ) in the South, 7% ( $n=88,075$ ) in the West, 2% ( $n=19,394$ ) non United States, and 22% ( $n=264,260$ ) were unknown.

Compared to controls, the exercise-based CR cohort was younger, had a lower proportion of females, had a higher proportion of people identified as White and Asian, and had a higher proportion of patients with health conditions, history of cardiovascular procedures and medications. These variables were included in subsequent PSM analyses (Table 1). Table 1 also shows the characteristics of the exercise-based CR cohort and controls after 1:1 PSM. Following 1:1 PSM, there were 20,182 patients in each cohort, which were well balanced on age, sex, health conditions, and cardiovascular procedures ( $P>0.05$ ). Although statistically different, patients in each cohort were well balanced following PSM for White or unknown race, hypertension, and cardiovascular medications ( $P<0.05$ ).

#### *Clinical outcomes*

Before PSM and excluding patients with the outcome outside the measurement window, 2-year all-cause mortality was 9.3% ( $n=1,872$  of 20,038 participants) in the exercise-based CR cohort, and 13.4% ( $n=144,521$  of 1,082,155 participants) in controls ( $P<0.0001$ ). Logistic regression models showed 33% lower odds of all-cause mortality (odds ratio 0.67, 95% CI: 0.64-0.70) in the exercise-based CR cohort compared to controls.

Following PSM and excluding patients with the outcome outside the measurement window, 2-year all-cause mortality was 9.2% ( $n=1,875$  of 20,111 participants) in the exercise-based CR cohort and 15.1% ( $n=3,025$  of 20,036 participants) in the matched controls ( $P<0.0001$ ). Logistic regression models showed 42% lower odds of all-cause mortality (odds ratio 0.58, 95% CI: 0.54-0.62) in the exercise-based CR cohort compared to controls. Following PSM, exercise-based CR was also associated with 26% fewer hospitalisations (odds ratio 0.74, 95% CI 0.71-0.77), 37% lower odds of incident stroke (0.63, 95% CI 0.51-0.79), and 53% lower odds of incident AF (odds ratio 0.47, 95% CI 0.4-0.55).

#### *Subgroup analyses*

Following PSM, subgroup logistic regression analyses demonstrated that exercise-based CR was associated with lower odds for all-cause mortality compared to propensity matched controls for all included subgroups (female, male; age  $\geq 75$  years, age  $< 75$  years; BMI  $\geq 30$ , BMI  $< 30$ ; history of stroke, no history of stroke; history of acute myocardial infarction (AMI), no history of AMI; history of AF, no

history of AF; hypertensive, no history of hypertension; and HFpEF (HF with preserved ejection fraction), HFrEF (HF with reduced ejection fraction); all  $P<0.0001$ ) (Figure 1).

## Discussion

Collectively, this retrospective analysis represents the largest follow-up data set of its kind for patients with HF, strongly supporting the clinical value of CR and exercise following a HF diagnosis. We present two principal findings. Firstly, in 40,364 patients with HF, exercise-based CR was associated with 42% lower odds of all-cause mortality, 26% lower odds of hospitalisation, 37% lower odds of stroke, and 53% lower odds of incident AF compared to propensity matched controls. These findings were independent of sex, age, race, included comorbidities, and HF subtype. Secondly, this is the first study to demonstrate that exercise-based CR is associated with lower odds of mortality (35%) in patients with HFpEF compared to patients with HFpEF without exercise-based CR.

Not confined to HF patients, exercise-based CR is generally recommended (with the highest level of scientific evidence - class I) by the European Society of Cardiology (ESC),(14) the American Heart Association (AHA) and the American College of Cardiology (ACC).(15) These global recommendations are supported by studies that find CR-related improvements in exercise capacity, health-related quality of life, and reductions in hospital admissions.(7-9) Findings related to all-cause mortality, however, are less clear. In contrast to earlier Cochrane meta-analyses,(7, 8) the most recent Cochrane systematic review and meta-analysis of 63 studies (14,846 participants)(9) did not observe a statistically significant reduction in all-cause mortality following exercise-based CR in coronary heart disease patients compared to no-exercise controls. In agreement with this observation, the most recent Cochrane review of randomised controlled trials, which compared CR to no exercise for patients with HF (27 studies; 2,596 participants) concluded that CR appears to have no impact on mortality in the short term (<12-months follow-up).(11) Such conclusions were likely limited due to a small number of events (<300) and a short follow-up time period, in addition to an overall low-quality of evidence. Indeed, our study included >20,000 individuals with HF undergoing CR and a follow-up of 2 years, which represents the largest of its kind. Our finding of lower mortality in HF patients undergoing CR supports some previous high-quality studies (when aggregated) that evaluated the effect of CR on mortality using trials with >12-months follow-up.(11) To further support this, another systematic review found no short-term effects on mortality (<6-months).(16) The authors estimated an additional ~10,000 participants would be needed to be statistically powered to evaluate the effect of CR on mortality for patients with HF. It is also possible that the included randomised controlled



231 trials recruited relatively healthy patients (i.e. typically middle-aged males with no comorbidities),(11)  
232 which may attenuate the perceived effectiveness of CR in this population.(17)

233  
234 Some individual trials have found a positive effect of CR on mortality in HF patients. For example, in a  
235 multi-centre randomised controlled trial of >2,300 patients with HFrEF, O'Connor et al(18)  
236 demonstrated a significant 11% reduction in all-cause mortality or hospitalisation readmission at 2.5-  
237 year follow-up with CR compared to controls, after adjustment for baseline characteristics. Similarly,  
238 Mudge et al(19) found a significantly lower all-cause mortality with exercise-based CR (3 events of 140  
239 participants) compared to no exercise control (10 events of 138 participants), although with a small  
240 number of events, caution is warranted when interpreting such findings. When the results of Mudge  
241 et al. were stratified by patients with HFrEF and HFpEF, death and readmission rates were higher in  
242 patients with HFpEF compared to patients with HFrEF (OR: 1.99; 95% CI: 1.02 to 3.88;  $P=0.04$ ).  
243 However, there was no statistically significant effect of the intervention for patients with HFpEF.(19)  
244 This highlights the need for ongoing research efforts to improve outcomes in this challenging  
245 population.

246  
247 Patients with HFpEF are an especially important cardiovascular subpopulation to focus on, particularly  
248 because there is a scarcity of effective treatment options.(20) Our results are the first to suggest  
249 exercise-based CR is associated with lower odds of all-cause mortality in patients with HFpEF.(21)  
250 These encouraging findings in 18,485 patients with HFpEF are strongly supportive of the need for  
251 future investigation, including randomised controlled trials powered to investigate mortality and  
252 hospitalisations, such as the EX-DHF Trial.(22)

253  
254 Although some evidence favours exercise-based CR following an acute stroke,(23) the association of  
255 CR with incident stroke in patients with HF has not been previously investigated. In the present study,  
256 exercise-based CR was associated with significantly lower odds of incident stroke (37%) compared to  
257 propensity matched controls. As the effect of exercise-based CR on incident stroke in cardiovascular  
258 populations is largely unknown, future prospective research is needed. We also found significantly  
259 lower odds of incident AF in patients with HF following exercise-based CR compared to propensity  
260 matched controls. This is aligned with our previous work that demonstrated CR was associated with  
261 lower odds of mortality and lower odds of disease progression in patients with AF (*studies under*  
262 *review*).

Hospitalisation is an important outcome when considering both patient and healthcare burden, especially for HF patients who demonstrate high rehospitalisation rates. The present study shows that exercise-based CR was associated with 26% lower odds of hospitalisation compared to propensity matched controls. This is largely aligned with previous research findings.(11, 16, 18, 24, 25) Despite recent reductions for in-hospital and 30-day mortality for patients with HF, rehospitalisation rates seem to have increased.(26) Given the heterogeneity of readmission triggers for patients with HF, a better focus on preventive strategies to reduce hospitalisation is needed.(27) In this regard, exercise-based CR presents a promising secondary prevention strategy for reduced mortality, hospitalisation, and secondary cardiovascular events in patients with HF.

Alarmingly, given that of 1,245,500 patients with HF, only 1.6% (n=20,182) were referred to an exercise-based CR programme within 6-months of diagnosis, there is urgent need for improved awareness and referral. Indeed, based on the present study's findings, significant improvements in mortality, hospitalisation, and cardiovascular comorbidity may be realised in patients with HF who undergo an exercise-based CR programme. Improved uptake of such programmes could therefore have substantial impact on patient health and healthcare burden.

The benefit of CR for patients with HF may be explained through improvements in cardiorespiratory fitness. As such, it has been proposed that cardiorespiratory fitness may be a suitable surrogate end point for the treatment effect of CR on mortality in patients with HF.(28, 29) Indeed, an improvement of 5% in predicted cardiorespiratory fitness was associated with a corresponding 10% reduction in risk of cardiac hospitalisation or all-cause mortality during 2.5-years of follow-up.(17) The mechanisms behind the improvement in cardiorespiratory fitness are likely to be a combined improvement in central cardiac output, peripheral oxygen extraction, skeletal muscle function,(30, 31) and vascular function/structure.(32) More specifically in patients with HFpEF, exercise training has been shown to improve exercise capacity and quality of life, associated with atrial reverse remodelling and improved left ventricular diastolic function.(33)

### *Limitations*

Given the problematic limitations of existing (and likely subsequent) randomised controlled trials to evaluate the effectiveness of CR on all-cause mortality in patients with HF, alternative research methods such as applied in the present study are warranted. Such real-world data can supplement our understanding of the impact of CR on important clinical endpoints (e.g. all-cause mortality) in cardiovascular subpopulations such as HFpEF, by including comparatively larger cohorts, higher event rates, and samples that are more likely representative of the population. Nevertheless, a number of

limitations are noteworthy. First, the data were collected from health care organization EMR databases and some co-morbidities may be underreported, and race was not available for all participants. Indeed, recording of ICD codes in administrative datasets may vary by factors such as age, number of comorbidities, severity of illness, length of hospitalisation, and whether in-hospital death occurred.(34) In particular, an EMR of CR and exercise does not necessarily provide information as to whether a participant attended, the intervention type and dose, or intervention adherence – this is an important limitation to this type of data. Nor do we have patient physical activity levels following the intervention, which would be an interesting outcome. We could also not determine the influence of attending different healthcare organizations due to data privacy restrictions. In addition, outcomes which occurred outside of the TriNetX network are not well captured. Second, the data were largely from multiple healthcare organizations in the United States but may not be representative of the wider population and the generalisability of the results beyond this cohort is therefore unclear. Third, other HF subsets such as patients with acute decompensated HF, left ventricular assist devices (LVAD), or those with transplants were not adequately represented. Fourth, HF aetiology information was not available for this dataset and future research should investigate how different aetiologies may influence outcomes. Finally, residual confounding may have impacted our results, including lifestyle factors and socioeconomic status, and quality of care, which were not available from EMRs.

### *Conclusion*

Using a global federated health research network, we found that participation in exercise-based CR in 40,364 patients with HF were associated with lower odds of all-cause mortality, hospitalisation, incident stroke, and incident AF at 2-years follow-up. Importantly, the survival benefit associated with exercise-based CR was observed in all patient subgroups, including patients with HFrEF and HFpEF, which has not been previously demonstrated. Given that the majority of patients with HF do not have access to CR programmes, findings of the present study provide the largest supporting evidence to date that exercise-based CR should be made available to patients with HF.

### *Funding*

No funding to declare.

### *Disclosures*

Benjamin JR Buckley has received funding from Bristol-Myers Squibb (BMS)/Pfizer. Stephanie L Harrison has received funding from BMS. Elnara Fazio-Eynullayeva and Paula Underhill are employees of TriNetX LLC. David J Wright has received speaker fees and research support from Boston Scientific

333 and Medtronic. Gregory YH Lip: consultant for Bayer/Janssen, BMS/Pfizer, Medtronic, Boehringer  
334 Ingelheim, Novartis, Verseon and Daiichi-Sankyo and speaker for Bayer, BMS/Pfizer, Medtronic,  
335 Boehringer Ingelheim, and Daiichi-Sankyo. No fees are directly received personally.

336

337 BJRB contributed to the conception or design of the work. BJRB contributed to the acquisition,  
338 analysis, and interpretation of data for the work. BJRB drafted the manuscript. SLH, EFE, PU, RS, DJW,  
339 DHJT, and GYHL critically revised the manuscript. All gave final approval and agree to be accountable  
340 for all aspects of work ensuring integrity and accuracy.

341

## REFERENCES

1. Cook C, Cole G, Asaria P, Jabbour R, Francis DP. The annual global economic burden of heart failure. *Int J Cardiol.* 2014;171(3):368-76.
2. Ponikowski P, Voors AA, Anker SD, Bueno H, Cleland JGF, Coats AJS, et al. 2016 ESC Guidelines for the diagnosis and treatment of acute and chronic heart failure: The Task Force for the diagnosis and treatment of acute and chronic heart failure of the European Society of Cardiology (ESC) Developed with the special contribution of the Heart Failure Association (HFA) of the ESC. *European Heart Journal.* 2016;37(27):2129-200.
3. Rutledge T, Reis VA, Linke SE, Greenberg BH, Mills PJ. Depression in heart failure a meta-analytic review of prevalence, intervention effects, and associations with clinical outcomes. *J Am Coll Cardiol.* 2006;48(8):1527-37.
4. Taylor CJ, Ordóñez-Mena JM, Roalfe AK, Lay-Flurrie S, Jones NR, Marshall T, et al. Trends in survival after a diagnosis of heart failure in the United Kingdom 2000-2017: population based cohort study. *BMJ.* 2019;364:l223.
5. Piepoli MF, Corrà U, Benzer W, Bjarnason-Wehrens B, Dendale P, Gaita D, et al. Secondary prevention through cardiac rehabilitation: from knowledge to implementation. A position paper from the Cardiac Rehabilitation Section of the European Association of Cardiovascular Prevention and Rehabilitation. *European J Cardiovasc Prev Rehabil.* 2010;17(1):1-17.
6. Price KJ, Gordon BA, Bird SR, Benson AC. A review of guidelines for cardiac rehabilitation exercise programmes: Is there an international consensus? *Eur J Prev Cardiol.* 2016;23(16):1715-33.
7. Heran BS, Chen JMH, Ebrahim S, Moxham T, Oldridge N, Rees K, et al. Exercise-based cardiac rehabilitation for coronary heart disease (Review). *Cochrane Db Syst Rev.* 2011(7):CD001800.
8. Oldridge NB, Guyatt GH, Fischer ME, Rimm AA. Cardiac rehabilitation after myocardial infarction. Combined experience of randomized clinical trials. *JAMA.* 1988;260(7):945-50.
9. Anderson L, Oldridge N, Thompson DR, Zwisler AD, Rees K, Martin N, et al. Exercise-Based Cardiac Rehabilitation for Coronary Heart Disease: Cochrane Systematic Review and Meta-Analysis. *J Am Coll Cardiol.* 2016;67(1):1-12.
10. Doimo S, Fabris E, Piepoli M, Barbati G, Antonini-Canterin F, Bernardi G, et al. Impact of ambulatory cardiac rehabilitation on cardiovascular outcomes: a long-term follow-up study. *European Heart Journal.* 2019;40(8):678-85.
11. Long L, Mordi IR, Bridges C, Sagar VA, Davies EJ, Coats AJS, et al. Exercise-based cardiac rehabilitation for adults with heart failure. *Cochrane Db Syst Rev.* 2019(1).
12. Dalal HM, Doherty P, Taylor RS. Cardiac rehabilitation. *BMJ.* 2015;351:h5000.
13. von Elm E, Altman DG, Egger M, Pocock SJ, Gøtzsche PC, Vandenbroucke JP. The Strengthening the Reporting of Observational Studies in Epidemiology (STROBE) statement: guidelines for reporting observational studies. *Journal of clinical epidemiology.* 2008;61(4):344-9.
14. Ambrosetti M, Abreu A, Corrà U, Davos CH, Hansen D, Frederix I, et al. Secondary prevention through comprehensive cardiovascular rehabilitation: From knowledge to implementation. 2020 update. A position paper from the Secondary Prevention and Rehabilitation Section of the European Association of Preventive Cardiology. *Eur J Prev Cardiol.* 2020:204748732091337.

15. Drozda J, Messer JV, Spertus J, Abramowitz B, Alexander K, Beam CT, et al. ACCF/AHA/AMA–PCPI 2011 Performance Measures for Adults With Coronary Artery Disease and Hypertension: A Report of the American College of Cardiology Foundation/American Heart Association Task Force on Performance Measures and the American Medical Association–Physician Consortium for Performance Improvement. *Circulation*. 2011;124(2):248-70.
16. Lewinter C, Doherty P, Gale CP, Crouch S, Stirk L, Lewin RJ, et al. Exercise-based cardiac rehabilitation in patients with heart failure: a meta-analysis of randomised controlled trials between 1999 and 2013. *Eur J Prev Cardiol*. 2015;22(12):1504-12.
17. Sabbag A, Mazin I, Rott D, Hay I, Gang N, Tzur B, et al. The prognostic significance of improvement in exercise capacity in heart failure patients who participate in cardiac rehabilitation programme. *Eur J Prev Cardiol*. 2018;25(4):354-61.
18. O'Connor CM, Whellan DJ, Lee KL, Keteyian SJ, Cooper LS, Ellis SJ, et al. Efficacy and safety of exercise training in patients with chronic heart failure: HF-ACTION randomized controlled trial. *Jama*. 2009;301(14):1439-50.
19. Mudge AM, Denaro CP, Scott AC, Meyers D, Adsett JA, Mullins RW, et al. Addition of Supervised Exercise Training to a Post-Hospital Disease Management Program for Patients Recently Hospitalized With Acute Heart Failure: The EJECTION-HF Randomized Phase 4 Trial. *JACC Heart Fail*. 2018;6(2):143-52.
20. Tromp J, Bamadhaj S, Cleland JGF, Angermann CE, Dahlstrom U, Ouwerkerk W, et al. Post-discharge prognosis of patients admitted to hospital for heart failure by world region, and national level of income and income disparity (REPORT-HF): a cohort study. *Lancet Global Heal*. 2020;8(3):e411-e22.
21. Bjarnason-Wehrens B, Nebel R, Jensen K, Hackbusch M, Grilli M, Gielen S, et al. Exercise-based cardiac rehabilitation in patients with reduced left ventricular ejection fraction: The Cardiac Rehabilitation Outcome Study in Heart Failure (CROS-HF): A systematic review and meta-analysis. *Eur J Prev Cardiol*. 2020;27(9):929-52.
22. Edelmann F, Bobenko A, Gelbrich G, Hasenfuss G, Herrmann-Lingen C, Duvinage A, et al. Exercise training in Diastolic Heart Failure (Ex-DHF): rationale and design of a multicentre, prospective, randomized, controlled, parallel group trial. *Eur J Heart Fail*. 2017;19(8):1067-74.
23. Marzolini S, Tang A, McIlroy W, Oh PI, Brooks D. Outcomes in people after stroke attending an adapted cardiac rehabilitation exercise program: does time from stroke make a difference? *J Stroke Cerebrovasc Dis*. 2014;23(6):1648-56.
24. Ades PA, Keteyian SJ, Balady GJ, Houston-Miller N, Kitzman DW, Mancini DM, et al. Cardiac rehabilitation exercise and self-care for chronic heart failure. *JACC Heart Fail*. 2013;1(6):540-7.
25. Taylor RS, Sagar VA, Davies EJ, Briscoe S, Coats AJ, Dalal H, et al. Exercise-based rehabilitation for heart failure. *Cochrane Database Syst Rev*. 2014;2014(4):Cd003331.
26. Bueno H, Ross JS, Wang Y, Chen J, Vidán MT, Normand SL, et al. Trends in length of stay and short-term outcomes among Medicare patients hospitalized for heart failure, 1993-2006. *Jama*. 2010;303(21):2141-7.
27. Iacovoni A, D'Elia E, Gori M, Oliva F, Lorini FL, Senni M. Treating Patients Following Hospitalisation for Acute Decompensated Heart Failure: An Insight into Reducing Early Rehospitalisations. *Card Fail Rev*. 2019;5(2):78-82.

28. Taylor RS, Walker S, Ciani O, Warren F, Smart NA, Piepoli M, et al. Exercise-based cardiac rehabilitation for chronic heart failure: the EXTRAMATCH II individual participant data meta-analysis. *Health Technol Assess.* 2019;23(25):1-98.
29. Tabet J-Y, Meurin P, Benzidi Y, Beauvais F, Ben Driss A, Weber H, et al. Greater prognostic value of peak VO<sub>2</sub> after exercise training program completion in heart failure patients. *Int J Cardiol.* 2013;168(4):4139-44.
30. Patwala Ashish Y, Woods Paul R, Sharp L, Goldspink David F, Tan Lip B, Wright David J. Maximizing Patient Benefit From Cardiac Resynchronization Therapy With the Addition of Structured Exercise Training. *Journal of the American College of Cardiology.* 2009;53(25):2332-9.
31. van Tol BA, Huijsmans RJ, Kroon DW, Schothorst M, Kwakkel G. Effects of exercise training on cardiac performance, exercise capacity and quality of life in patients with heart failure: a meta-analysis. *Eur J Heart Fail.* 2006;8(8):841-50.
32. Green DJ, Hopman MT, Padilla J, Laughlin MH, Thijssen DH. Vascular Adaptation to Exercise in Humans: Role of Hemodynamic Stimuli. *Physiol Rev.* 2017;97(2):495-528.
33. Edelmann F, Gelbrich G, Düngen HD, Fröhling S, Wachter R, Stahrenberg R, et al. Exercise training improves exercise capacity and diastolic function in patients with heart failure with preserved ejection fraction: results of the Ex-DHF (Exercise training in Diastolic Heart Failure) pilot study. *J Am Coll Cardiol.* 2011;58(17):1780-91.
34. Chong WF, Ding YY, Heng BH. A comparison of comorbidities obtained from hospital administrative data and medical charts in older patients with pneumonia. *BMC Health Serv Res.* 2011;11:105-.

**Table 1.** Baseline characteristics %(n)\* of the HF populations with and without exercise-based CR, before and after propensity score matching.

	Initial populations			Propensity score matched populations		
	HF without CR (n=1,225,318)	HF with CR (n=20,549)	P-value	HF without CR (n=20,182)	HF with CR (n=20,182)	P-value
Age (years) at diagnoses; mean (SD)	67.6 (16.1)	64.5 (13.9)	<0.001	64.7 (14.1)	64.4 (13.5)	0.382
Female	48.9 (587,100)	36.8 (7,428)	<0.001	36.7 (7,412)	36.8 (7,427)	0.877
Race <sup>a</sup>						
White	69.5 (834,697)	73.5 (14,842)	<0.001	75.8 (15,302)	73.5 (14,841)	<0.001
Black or African American	17 (204,097)	16.9 (3,404)	0.624	16.2 (3,274)	16.9 (3,404)	0.082
Asian	1.6 (19,200)	2.1 (418)	<0.001	1.9 (382)	2.1 (416)	0.224
Unknown	11.6 (138,724)	6.6 (1,337)	<0.001	5.5 (1,101)	6.6 (1,337)	<0.001
Hypertensive diseases	31.3 (375,380)	77.4 (15,320)	<0.001	78.4 (15,811)	77.4 (15,622)	0.023
Ischaemic heart diseases	16.1 (193,531)	75.6 (15,320)	<0.001	75.4 (15,216)	75.9 (15,314)	0.256
Cerebrovascular diseases	5.7 (68,249)	19.2 (3,871)	<0.001	18.9 (3,814)	19.2 (3,870)	0.478
Diabetes Mellitus	16.1 (193,039)	41.6 (8,403)	<0.001	41.7 (8,416)	41.6 (8,399)	0.864
Chronic Kidney Disease	8.8 (105,797)	28.6 (5,781)	<0.001	29.1 (5,866)	28.6 (5,776)	0.323
Cardiovascular Procedures <sup>b</sup>	27.1 (325, 026)	86.4 (17,446)	<0.001	85.8 (17,322)	86.4 (17,440)	0.089
Cardiovascular Medications <sup>c</sup>	29.5 (353,958)	83.7 (16,905)	<0.001	84.8 (17,121)	83.7 (16,899)	0.002

\*Values are % (n) unless otherwise stated. Baseline characteristics were compared using a chi-squared test for categorical variables and an independent-sample t-test for continuous variables. <sup>a</sup>Data are taken from structured fields in the electronic medical record systems of the participating healthcare organizations, therefore, there may be regional or country-specific differences in how race categories are defined. <sup>b</sup>Cardiovascular procedures include cardiography, echocardiography, catheterization, cardiac devices, electrophysiological procedures.

<sup>c</sup>Cardiovascular medications include beta-blockers, antiarrhythmics, diuretics, lipid lowering agents, antianginals, calcium channel blockers, ACE inhibitors. HF; heart failure, CR; cardiac rehabilitation, SD; standard deviation.

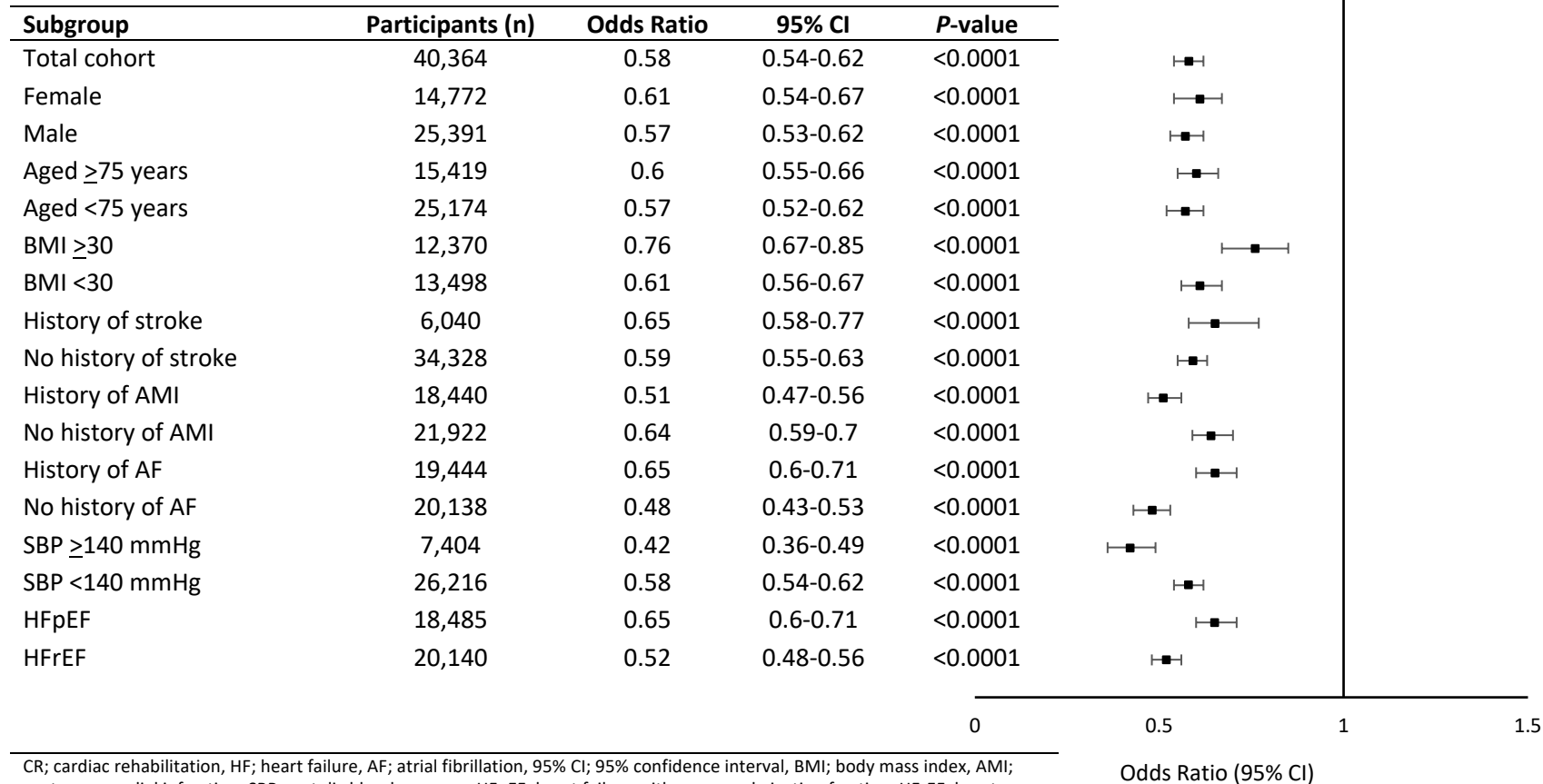


**Table 2.** Major adverse events at 2-year follow-up from HF diagnosis; comparing HF patients who received exercise-based CR ( $n=20,182$ ) to propensity matched HF patients who received usual care only ( $n=20,182$ ).

Major adverse events	% of events	Odds Ratio	95% CI	P-value
All-cause mortality	9.3 vs 15.2	0.58	0.54-0.62	<0.0001
Hospitalisation	40.4 vs 47.8	0.74	0.71-0.77	<0.0001
Incident stroke*	0.7 vs 1.2	0.63	0.51-0.79	<0.0001
Incident AF <sup>#</sup>	2.2 vs 4.5	0.47	0.4-0.55	<0.0001

HF; heart failure, 95% CI; 95% confidence interval, CR; cardiac rehabilitation, AF; atrial fibrillation.  
 \*Subsample of patients with no history of stroke before HF diagnosis ( $n=34,756$ ).  
<sup>#</sup>Subsample of patients with no history of AF before HF diagnosis ( $n=21,006$ ).

Favours CR Favours controls



CR; cardiac rehabilitation, HF; heart failure, AF; atrial fibrillation, 95% CI; 95% confidence interval, BMI; body mass index, AMI; acute myocardial infarction, SBP; systolic blood pressure, HFpEF; heart failure with preserved ejection fraction, HFrEF; heart failure with reduced ejection fraction.

**Figure 1.** Subgroup-specific odds ratios for all-cause mortality during 2-year follow-up from HF diagnosis; comparing HF patients who received exercise-based CR to propensity-matched HF patients who received usual care only (controls).

