



Bent Egberg Mikkelsen

Usefulness of the foodscape approach

Wrap up and discussion at the Symposium S15, May 23



Beyond School Meal Programs:

A foodscape approach to better school based nutrition

San Diego May 21 -24, 2014, ISBNPA



Abstract :: The presentations, comments and questions clearly shows that using the foodscape metaphor offers good lens to look at the diverse food realities present at school school foodscapes. The foodscape metaphor is good at capturing the existing food reality and how things are as well as the imagined food reality - how things could be. It is well suited as a frame for understanding food in school as well as outside school. It captures the food world as well as the food related world (curriculum etc). In addition it can capture the structures of food environment and the agency of its agents/stakeholders, And finally it captures the physical food reality as well as the way we speak about it



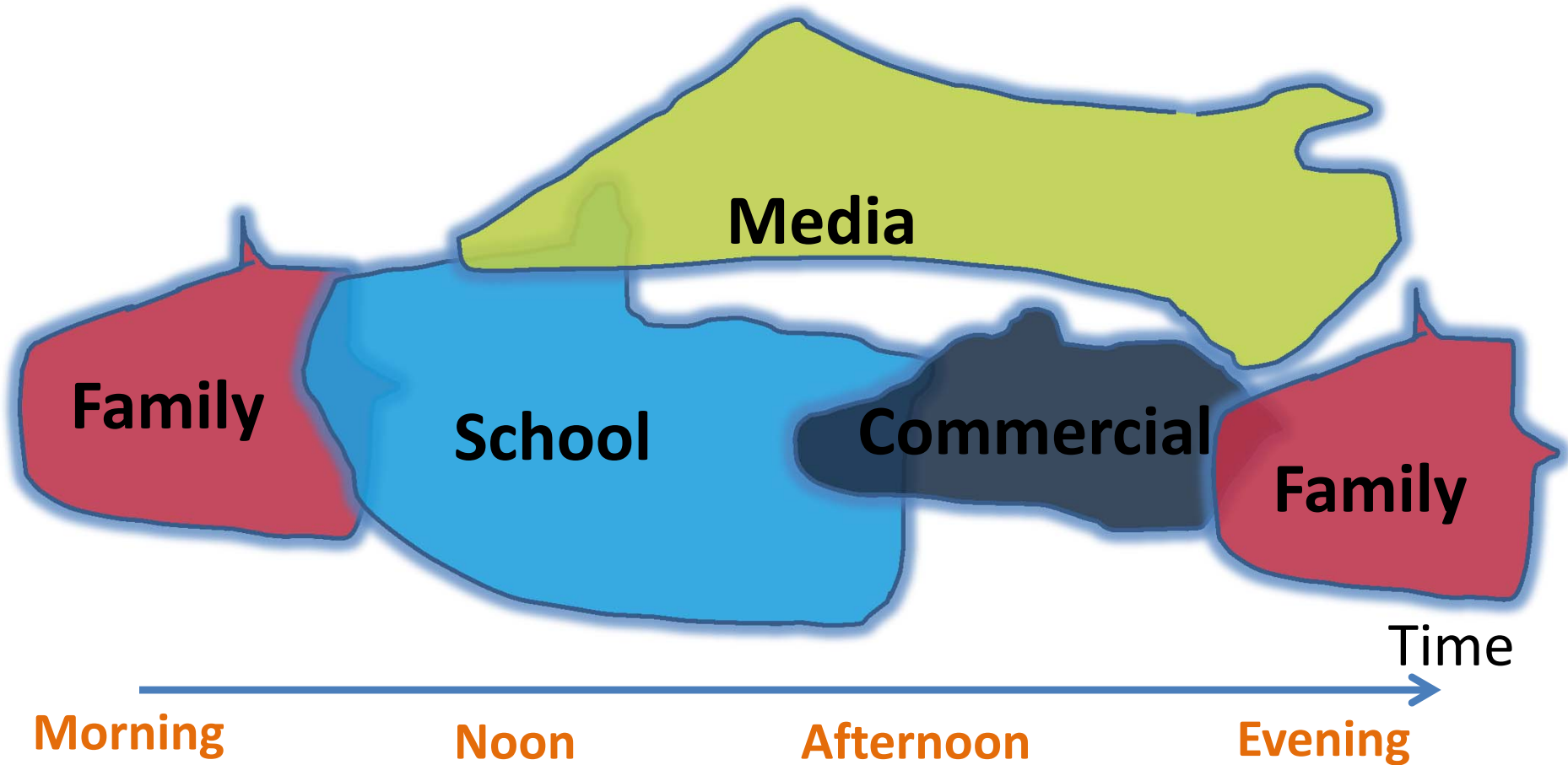
Two approaches

- Local single in depth case action
- Action research and intervention
- Multiple case mediator action
- Consultancy, inspiration,

A foodscape approach captures

- The existing food reality. How things are
- The imagined food reality. How things could be
- Food in school
- Outside school
- The food world
- The food related world (curriculum etc)
- The structures of food environment
- The agency of its agents/stakeholders
- The physical food reality
- The way we speak about it

The foodscapes of young people



Modifiability of foodscapes

Modifiability
index score

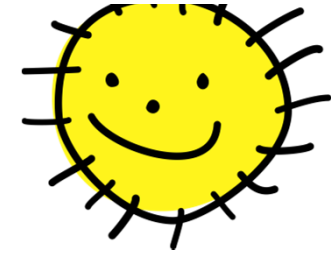


School

Family

Commercial

School Foodscapes Assessment Tool (S-FAT)



Environment/structures	Assessment of environment	Assessment of action possibilities
Food availability		
SMP (school meal program) available?		
School Fruit Scheme (SFS) available		
School Milk Scheme (SMS) available		
Presence of unofficial "skole bod" with		

"Foodies"/Stakeholders/Agents	Priorities	Activities that could support priorities	Assessment of action possibilities
Head teacher			
Teaching staff			
Canteen staff			
Janitor staff			
Parents board			
Home economics teaching staff			
Municipal school adm staff			
PE/Outdoor activity teaching staff			
Municipal procurement			

The SNIPE approach

Page 1

SNIPE questionnaire version 3.2

Domain and questions

1. Domain 1. School Food Policy and its objectives

1.1. How many schools and schoolchildren are there in your country?

	Number of schools	Number of school children		Minimum age (years)	Maximum age (years)
		Male	Female		
Primary (elementary)					
Secondary (middle and high)					

Schools that are primarily funded by the state or in conjunction with bodies supporting public education e.g. religious or philanthropic organisations

1.2. Is food or drink available in schools in your country?

- a. Yes
- b. No

"Available" means any food or drink provided in schools, whether paid for or free, by government, non-government, private, in-school, voluntary, charitable, etc. This includes take-home rations. It *excludes* packed lunches prepared at home and provided by parents/carers for individual

Please comment on definition of "available"