



Aalborg Universitet

AALBORG UNIVERSITY
DENMARK

Off flavour in recirculated aquaculture systems

Lukassen, Mie Bech; Saunders, Aaron Marc; Nielsen, Jeppe Lund

Publication date:
2016

[Link to publication from Aalborg University](#)

Citation for published version (APA):

Lukassen, M. B., Saunders, A. M., & Nielsen, J. L. (2016). *Off flavour in recirculated aquaculture systems*. Poster presented at MEWE and Biofilms IWA Specialist Conference , Copenhagen, Denmark.

General rights

Copyright and moral rights for the publications made accessible in the public portal are retained by the authors and/or other copyright owners and it is a condition of accessing publications that users recognise and abide by the legal requirements associated with these rights.

- Users may download and print one copy of any publication from the public portal for the purpose of private study or research.
- You may not further distribute the material or use it for any profit-making activity or commercial gain
- You may freely distribute the URL identifying the publication in the public portal -

Take down policy

If you believe that this document breaches copyright please contact us at vbn@aub.aau.dk providing details, and we will remove access to the work immediately and investigate your claim.

Off flavour in recirculated aquaculture systems



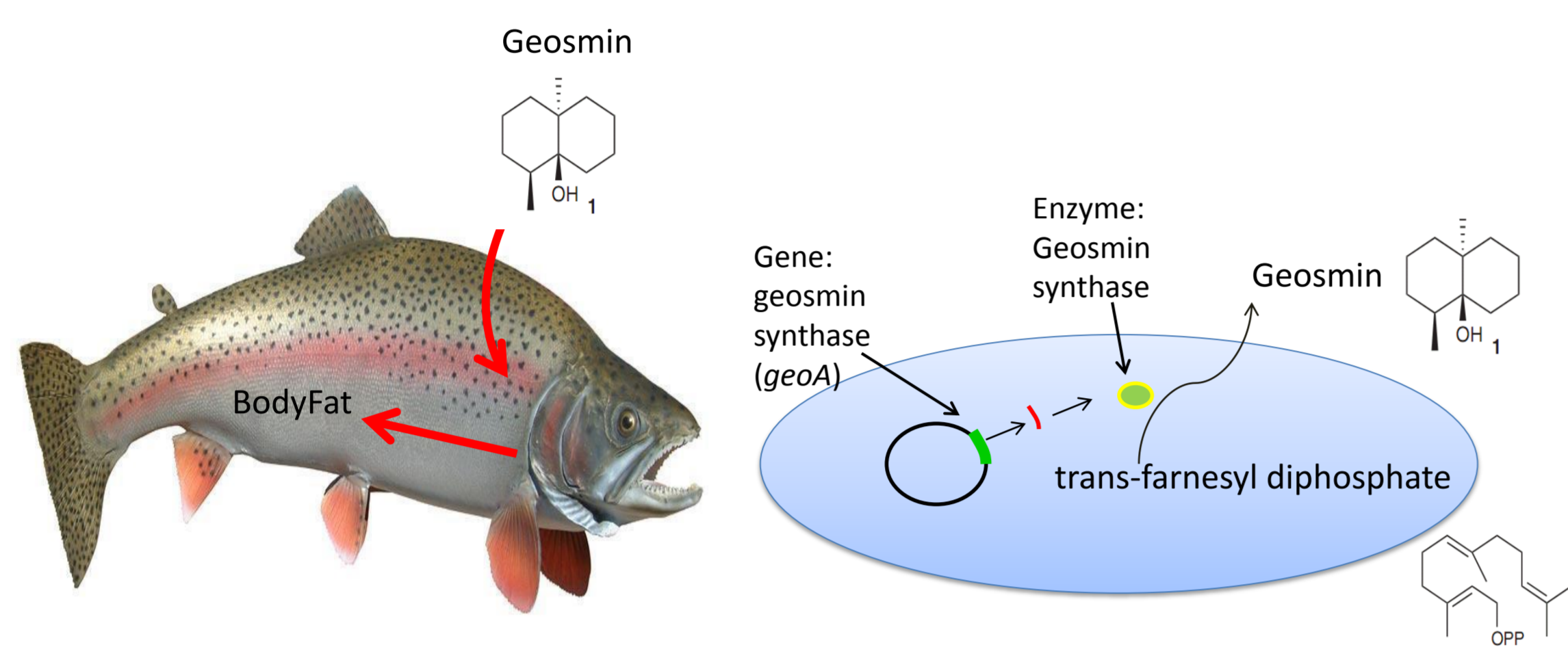
Mie B. Lukassen, Aaron M. Saunders, Jeppe L. Nielsen

Department of Chemistry and Bioscience,
Aalborg University, Aalborg, Denmark

mbl@bio.aau.dk

Introduction

Earthy off-flavour (geosmin) in farmed fish is a global problem of major economic impact for fish farmers and wine producers. Especially in recirculated aquaculture systems (RAS) with low exchange of water it can significantly affect the economy of the farm. Geosmin is a secondary metabolite which is produced by a few organisms containing the geosmin synthetase gene (*geoA*).



Homology search of the *geoA* has allowed us to identify at least three abundant groups of bacteria that can produce geosmin:

- 1) Actinomycetales (*Streptomyces* and 5 other clades)
- 2) Freshwater Cyanobacteria
- 3) Myxococcales

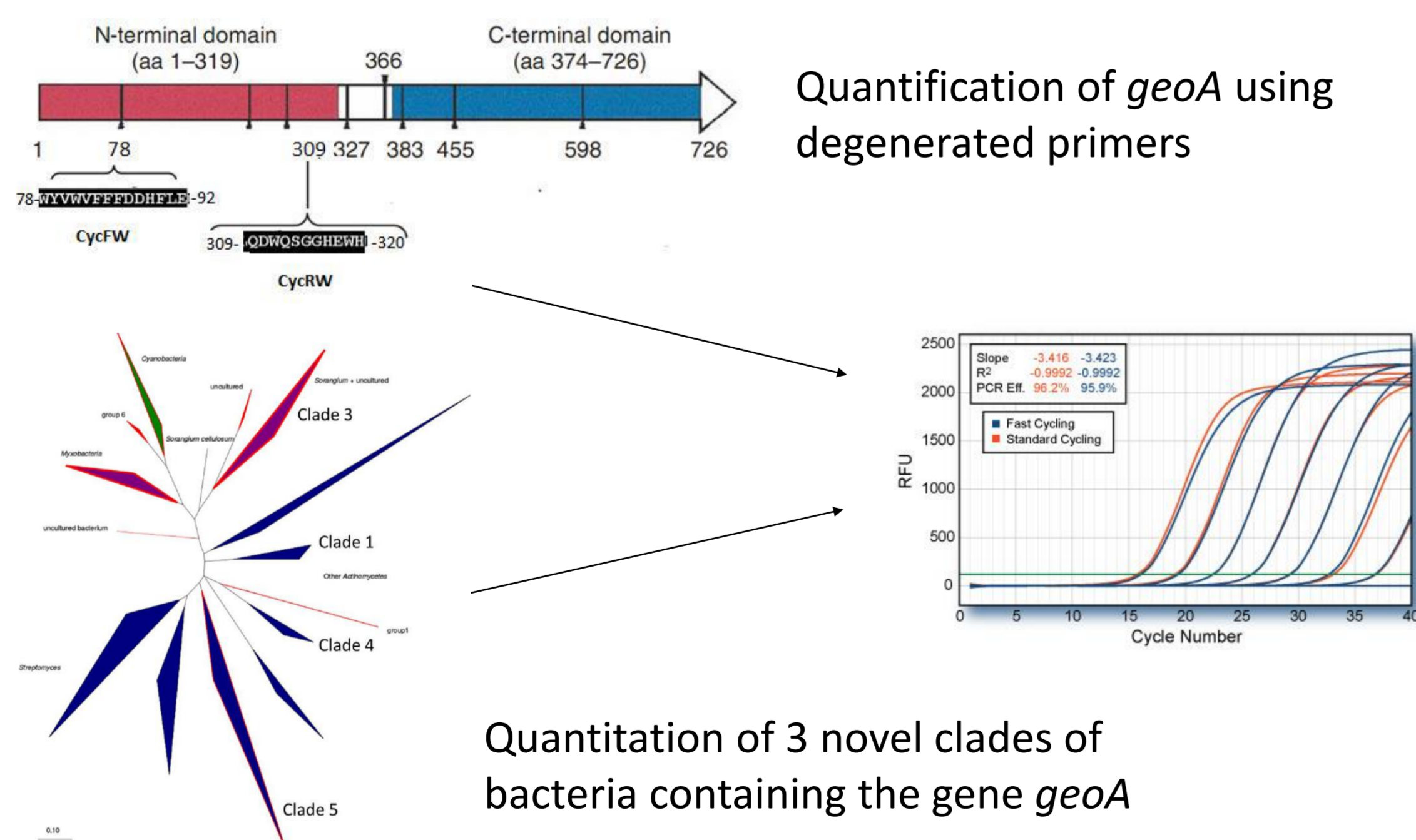
Quantification were performed by qPCR for the most abundant groups using *geoA* and the impact on microbial community composition were carried out by amplicon sequencing of the 16S rRNA gene. Relative abundance of geosmin-producing bacteria were evaluated statistically with environmental and operational parameters in aquaculture systems as well as the effect on the entire microbial community.

Methods

Sample type	DK	CH	F	NL
Inflow water	8	5	3	11
Outflow water	8	5	3	11
Biofilter	8	3	4	11

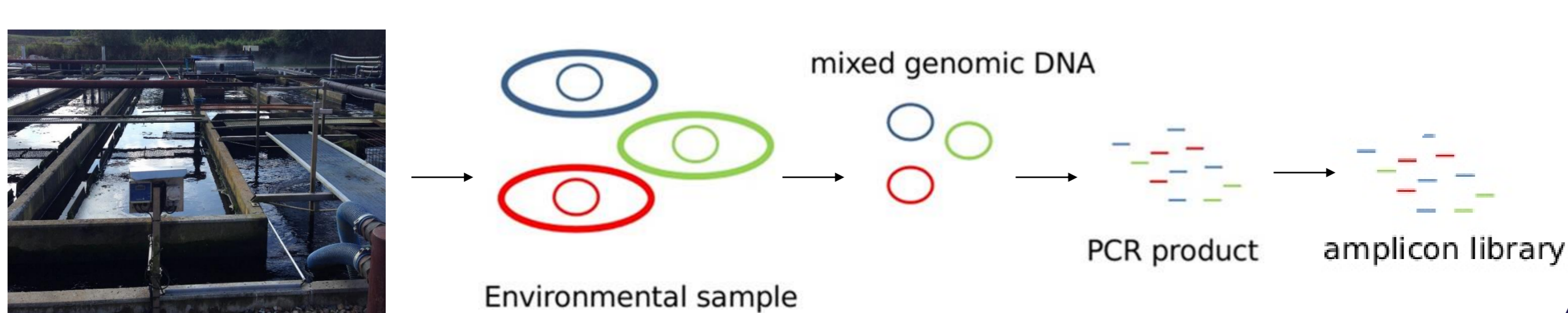
Total number of samples analysed > 50

Method 1:



Quantitation of 3 novel clades of bacteria containing the gene *geoA*

Method 2:



Results

Quantification (qPCR) of the bacterial groups in each plant

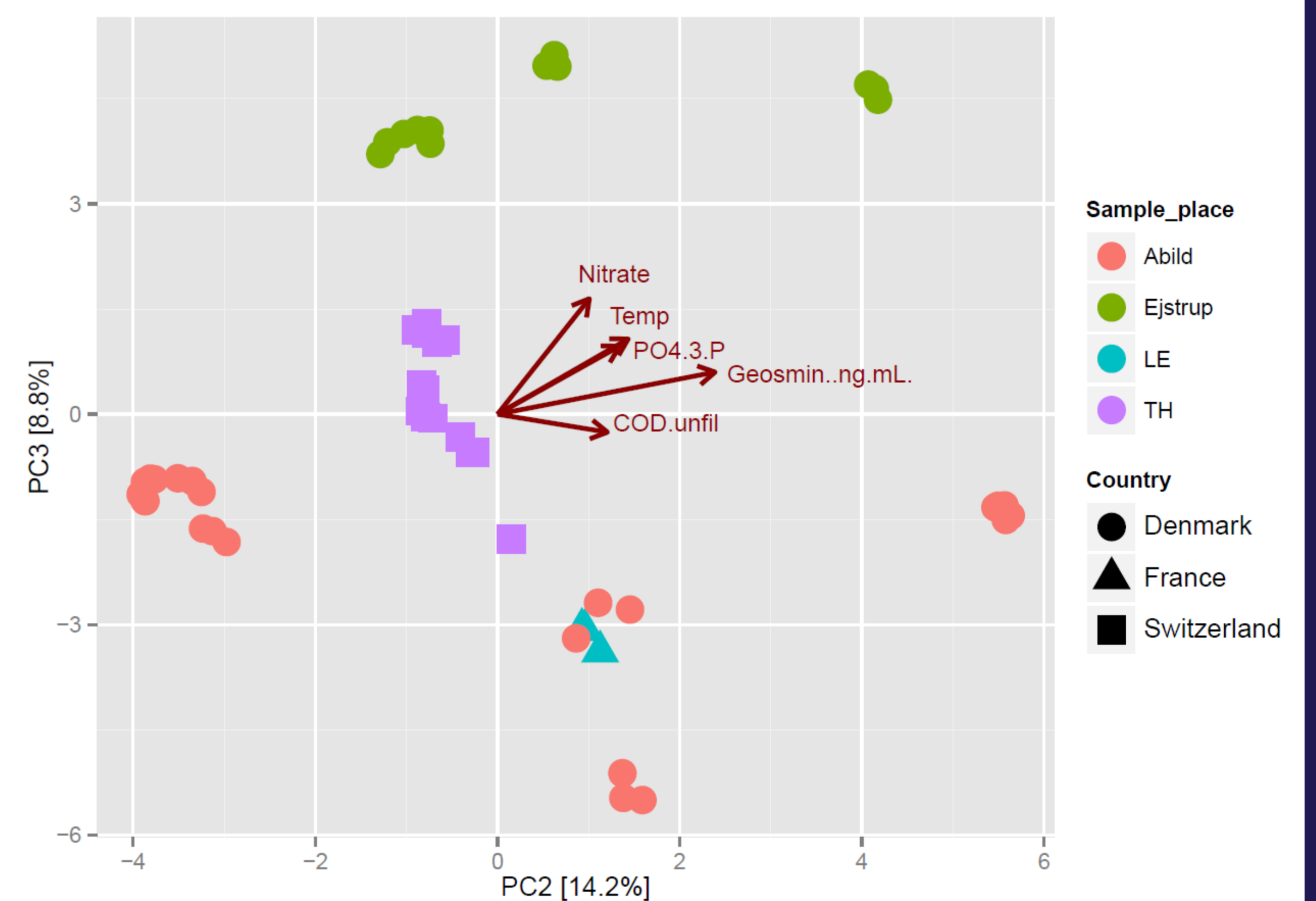
Sample	<i>geoA</i> gene (% of total bacteria)			
	Clade 1	Clade 3	Clade 5	Cyc
Plant 1 (Water, outdoor)	0.0052%	0.00083%	0.034%	0.035%
Plant 1 (Biofilter, outdoor)	0.14%	0.15%	0.0078%	0.0078%
Plant 2 (Water, outdoor)	0.0069%	0.00082%	0.00023%	0.014%
Plant 2 (Biofilter, outdoor)	0.039%	0.022%	0.00012%	0.048%
Plant 3 (Water, indoor)	0.0017%	0.00%	0.0062%	0.16%
Plant 3 (Biofilter, indoor)	0.047%	0.00043%	0.00017%	0.0031%
Plant 4 (Water, indoor)	0.000087%	0.00025%	0.0037%	0.0034%
Plant 4 (Biofilter, indoor)	0.0028%	0.21%	0.016%	0.032%

3 bacterial clades present in most farms

geoA containing bacteria exists in a low amount in RAS, compared to total bacteria

Biofilters showed to contain the highest amount of *geoA*

Correlations between environmental factors in the plants



Geosmin correlates positive to COD, phosphate, and temperature

Conclusions

- Large differences between *geoA*-producing bacteria in plants
- *geoA* containing bacteria was found in low amounts in all plants (most abundant in filters)
- Several environmental factors correlate positive with geosmin. Such correlations can be used as a diagnostic tool in developing strategies to limit the growth of geosmin-producing bacteria.