

## Life-Years Lost After Newly Diagnosed Atrial Fibrillation in Patients with Heart Failure

Vinter, Nicklas; Cordsen, Pia; Lip, Gregory YH; Benjamin, Emelia J.; Johnsen, Søren Paaske; Frost, Lars; Trinquart, Ludovic

*Published in:*  
Clinical Epidemiology

*DOI (link to publication from Publisher):*  
[10.2147/CLEP.S365706](https://doi.org/10.2147/CLEP.S365706)

*Creative Commons License*  
CC BY-NC 3.0

*Publication date:*  
2022

*Document Version*  
Publisher's PDF, also known as Version of record

[Link to publication from Aalborg University](#)

*Citation for published version (APA):*  
Vinter, N., Cordsen, P., Lip, G. YH., Benjamin, E. J., Johnsen, S. P., Frost, L., & Trinquart, L. (2022). Life-Years Lost After Newly Diagnosed Atrial Fibrillation in Patients with Heart Failure. *Clinical Epidemiology*, 14, 711-720. <https://doi.org/10.2147/CLEP.S365706>

### General rights

Copyright and moral rights for the publications made accessible in the public portal are retained by the authors and/or other copyright owners and it is a condition of accessing publications that users recognise and abide by the legal requirements associated with these rights.

- Users may download and print one copy of any publication from the public portal for the purpose of private study or research.
- You may not further distribute the material or use it for any profit-making activity or commercial gain
- You may freely distribute the URL identifying the publication in the public portal -

### Take down policy

If you believe that this document breaches copyright please contact us at [vbn@aub.aau.dk](mailto:vbn@aub.aau.dk) providing details, and we will remove access to the work immediately and investigate your claim.

# Life-Years Lost After Newly Diagnosed Atrial Fibrillation in Patients with Heart Failure

Nicklas Vinter<sup>1-3</sup>, Pia Cordsen<sup>3</sup>, Gregory YH Lip<sup>4,5</sup>, Emelia J Benjamin<sup>6</sup>, Søren Paaske Johnsen<sup>3</sup>, Lars Frost<sup>1,2</sup>, Ludovic Trinquant<sup>7-9</sup>

<sup>1</sup>Diagnostic Centre, University Clinic for Development of Innovative Patient Pathways, Silkeborg Regional Hospital, Silkeborg, Denmark; <sup>2</sup>Department of Clinical Medicine, Aarhus University, Aarhus, Denmark; <sup>3</sup>Danish Center for Clinical Health Services Research, Department of Clinical Medicine, Aalborg University, Aalborg, Denmark; <sup>4</sup>Liverpool Centre for Cardiovascular Science, University of Liverpool and Liverpool Chest & Heart Hospital, Liverpool, UK; <sup>5</sup>Department of Clinical Medicine, Aalborg University, Aalborg, Denmark; <sup>6</sup>Department of Medicine, Boston University School of Medicine and Department of Epidemiology, Boston University School of Public Health, Boston, MA, USA; <sup>7</sup>Tufts Clinical and Translational Science Institute, Tufts University, Boston, MA, USA; <sup>8</sup>Institute for Clinical Research and Health Policy Studies, Tufts Medical Center, Boston, MA, USA; <sup>9</sup>Department of Biostatistics, Boston University School of Public Health, Boston, MA, USA

Correspondence: Nicklas Vinter, Diagnostic Centre, University Clinic for Development of Innovative Patient Pathways, Silkeborg Regional Hospital, Falkevej 3, Silkeborg, 8600, Denmark, Tel +45 25321675, Email nicvin@rm.dk

**Objective:** Prior work estimated excess death rates associated with atrial fibrillation (AF) in heart failure (HF) with hazard ratios (HR). The aim was to estimate the life-years lost after newly diagnosed AF in HF patients.

**Methods:** Among patients diagnosed with HF in 2008–2018 in the nationwide Danish Heart Failure Registry, we compared patients with incident AF to referents matched on age, sex, and time since HF. We estimated the marginal hazard ratio (HR) for death and marginal difference in restricted mean survival times (RMST) between AF cases and referents at 10 years after AF diagnosis. We adjusted for sex, age at AF diagnosis, clinical and lifestyle risk factors, and medications.

**Results:** Among 4463 AF cases and 17,792 referents (mean age 73.7 years, 29% women), the HR was 1.41 (95% CI 1.38; 1.44) but there was evidence of non-proportional hazards. The difference in RMST was –18.2 months (95% CI –16.8; –19.6) at 10 years after AF diagnosis. There were differences in life-years lost between patients diagnosed with AF >1 year and ≤1 year after HF (–25.7 months, 95% CI –23.7; –27.7 vs –10.4 months, 95% CI –8.2; –12.5,  $p < 0.001$ ), women and men (–20.3 months, 95% CI –17.7; –21.9 vs –17.2 months, 95% CI –15.5; –19.0,  $p = 0.05$ ), patients with low, medium, and high CHA<sub>2</sub>DS<sub>2</sub>-VASc (10.3 months, 95% CI –4.6; –16.1 vs –18.5 months, 95% CI –16.7; –20.4 vs 22.1, 95% CI –18.8; –22.3,  $p = 0.002$ ).

**Conclusion:** HF patients with incident AF lost on average 1.5 life-years over 10 years after AF. Life-years lost were larger among patients diagnosed with AF >1 year after HF, women, and patients with higher CHA<sub>2</sub>DS<sub>2</sub>-VASc.

**Keywords:** atrial fibrillation, heart failure, RMST, prognosis, mortality, sex

## Introduction

Heart failure (HF) is associated with considerable burden worldwide, with high prevalence and mortality rates.<sup>1,2</sup> The lifetime risk of HF ranges from 20% to 45% among individuals aged 45 years and older.<sup>3,4</sup> In the setting of HF, atrial fibrillation (AF) is common. AF in HF is associated with HF progression, increased rate of stroke, and higher all-cause and cardiovascular mortality rates.<sup>5–8</sup> Newly diagnosed AF in HF carries a worse prognosis compared with HF alone and HF with prevalent AF and is associated with an approximately 2-fold increase in death rate.<sup>8</sup>

AF and HF share common risk factors and AF in HF may be a marker for the duration and intensity of exposure to such risk factors.<sup>9</sup> Given the increasing prevalence of HF and AF, it is of public health importance to improve our understanding of the role of AF in HF and to study health interventions to improve the prognosis of these patients.<sup>10</sup>

In this context, a well-established but underused measure of effects, the difference in restricted mean survival times (RMST), can provide clinically meaningful information to providers and patients.<sup>11–13</sup> In HF, the RMST would indicate the expected amount of time an individual will be alive, up to a specified time point. Additionally, the difference in

RMST between groups of HF patients with and without AF measures how much longer, on average, individuals without AF live over a fixed time horizon. By giving an absolute measure of effects in the time domain, the difference in RMST complements conventional measures based on relative or absolute risks to communicate clinical evidence and may support shared decision-making. Prior work on AF in HF measured the association by using hazard ratios (HR). However, misinterpretation of HR can lead to exaggeration of the true effect.<sup>14</sup> Our objective was to estimate differences in RMST and in survival probabilities between HF patients with and without incident AF over 1, 5, and 10 years.

## Materials and Methods

### Data Sources

In this nationwide registry-based matched cohort study, we matched HF patients with AF to HF referents without AF. We selected patients diagnosed with incident HF between 2008 and 2018 from the Danish Heart Failure Registry (DFHR).

The DHFR is a nationwide clinical quality database established in 2003 to monitor and improve the quality of care for HF patients in Denmark.<sup>15</sup> Registration of HF patients in the DFHR is mandatory for all Danish hospitals. A first-time hospital contact with a primary diagnosis of HF leads to enrollment in the DHFR. The diagnosis is made by a cardiologist using the diagnostic criteria from the Danish National Society for Cardiology and the European Society of Cardiology.<sup>15</sup> Enrollment requires both HF symptoms and objective signs of HF at rest, and possibly clinical improvement on HF treatment. Exclusion criteria for the DHFR are previously known HF, HF caused by congenital heart disease, valvular heart disease, or rapid heart rhythm (including AF), HF diagnosed concurrently with a primary diagnosis of acute myocardial infarction, isolated right-sided HF, or HF previously diagnosed and treated by a private practitioner of cardiology. To ensure sufficient time for the registry-based sampling of history of diseases, we further excluded HF patients who lived in Denmark for less than five years before the HF diagnosis. Additionally, we excluded patients with a history of AF (or atrial flutter) who were not excluded by the DHFR ([Supplemental Table 1](#)).

We also used the Danish National Patient Registry, the Danish National Prescription Registry, and the Danish Civil Registration System to collect HF patient covariates and outcomes ([Supplemental Text 1](#)).

### Incident AF Cases and Matched Referents

Among selected patients with HF, we identified cases with incident primary or secondary diagnoses of AF or atrial flutter by using the International Classification of Diseases 10th revision code I48 in the National Patient Registry ([Supplemental Table 1](#)). For each AF case, the date of new AF diagnosis defined the index date at which the risk period started. For each AF case, we chose up to 4 HF patients randomly selected among those without AF at the case index date and with the same age at HF diagnosis, age at case index date, and sex as the case ([Supplemental Figure 1](#)). We sampled referents with replacement, so an HF patient could be selected as a referent for multiple AF cases, in which case they became at risk at the corresponding index dates ([Supplemental Figure 1](#)). Additionally, a referent could become an AF case at an older age, in which case we censored the referent at the time of AF diagnosis.

### All-Cause Mortality

We retrieved vital status and date of death from the Danish Civil Registration System. We followed up each AF case from the index date until the earliest of death, heart transplantation, emigration, or end of follow-up (December 31, 2018). We followed up each referent from the matched case's index date until the earliest of newly diagnosed AF, death, heart transplantation, emigration, or end of follow-up (December 31, 2018). If a referent was later diagnosed with incident AF, we censored this referent at the date of AF diagnosis.

### Covariates

We considered sex, age at index date, lifestyle factors, clinical characteristics, comorbidities, and medications ([Supplemental Table 2](#)).

Lifestyle factors included alcohol consumption and smoking at the time of HF diagnosis. Elevated alcohol consumption was defined as more than 14 and 21 drinks per week for women and men until July 1, 2015. After that date, it was defined as more than 7 and 14 drinks per week for women and men. Smoking status was categorized into current, former, or never smoker.

Clinical characteristics included left ventricular ejection fraction (LVEF) and New York Heart Association (NYHA) classification. We categorized LVEF into  $<25\%$ ,  $25\text{--}40\%$ ,  $>40\text{--}49\%$ , and  $\geq 50\%$ .<sup>16</sup> Patients underwent echocardiography no later than seven days after the diagnosis of HF and up to six months before the diagnosis of HF if the cardiologist considered the examination relevant. Additionally, patients were categorized according to NYHA functional classification into classes I, II, and III/IV at the time of HF diagnosis or up to 12 weeks after the diagnosis.

Comorbidities included history of myocardial infarction, any stroke/transient ischemic attack, diabetes mellitus, chronic obstructive pulmonary disease, hypertension, chronic kidney disease, overweight/obesity (using diagnosis code), and any type of cancer except nonmelanoma skin cancer ([Supplemental Table 2](#)).

HF-related treatments included angiotensin-converting enzyme (ACE) inhibitors/angiotensin II receptor blockers (ARBs), beta-blockers, and mineralocorticoid receptor antagonists (MRAs). Antithrombotic treatments included oral anticoagulants and antiplatelet drugs. We assumed that patients were under treatment if they redeemed at least 1 prescription within 6 months before the index date.

## Statistical Analyses

We used the Royston–Parmar flexible parametric approach to model the log cumulative hazard of death according to case/referent status and covariates listed in [Table 1](#). We used a restricted cubic spline with 5 degrees of freedom to model the baseline cumulative hazards, and the internal knots were placed at the 20th, 40th, 60th, and 80th centiles of the distribution of the uncensored log survival times.

We then used G-computation to obtain marginal survival curves among HF patients with and without AF.<sup>17</sup> We used the fitted flexible parametric model to calculate the predicted survival curve for each individual according to their observed covariate pattern. We calculated each individual predicted survival curve under two counterfactuals, by assuming that all HF patients have AF and that all HF patients do not have AF. By averaging all individual curves under each counterfactual, we obtained marginal survival curves for HF patients with and without AF. This enabled a comparison focusing on the difference between the two populations of HF patients with and without AF by forcing the same covariate distribution over all potential confounders included in the model.

Based on the marginal survival curves, we derived marginal HRs. We tested the proportional hazards assumption by a likelihood ratio test comparing the flexible parametric model with and without AF as a time-dependent effect. We also plotted the marginal HR as a function of time. We extended this approach to calculate marginal survival probabilities and marginal RMST. Individual predicted RMST was estimated by the area under the individual predicted survival curve. We averaged over the marginal distribution of potential confounders for all the predicted survival probabilities and RMST obtained for each individual, under each counterfactual. Finally, we calculated the difference in survival probabilities and in RMST at 1, 5, and 10 years. We derived the associated 95% confidence intervals (95% CI) by using the delta method.

We used multiple imputation to account for missing values ([Supplemental Text 2](#)). We implemented multiple imputation with the Fully Conditional Specification (multivariate imputation by chained equations), with linear regression for imputation of continuous variables, logistic regression for binary variables, and ordinal logistic regression for categorical variables. We created 10 imputed datasets and combined the estimates with Rubin's rules. We used Stata Statistical Software (StataCorp. 2019.; Release 16.1. College Station, TX: StataCorp LLC.), the `sttooc` command to match AF cases to referents, the `stpm2` command to fit the flexible parametric model, and the `standsurv` command to derive marginal survival curves, probabilities, and RMST.

## Subgroup Analyses and Sensitivity Analyses

We performed subgroup analyses according to time from HF to AF diagnosis ( $\leq 1$  year vs  $>1$  year), sex, age ( $<75$  vs  $\geq 75$  years), LVEF ( $\leq 40\%$ ,  $>40\text{--}49\%$ , and  $\geq 50\%$ ), and CHA<sub>2</sub>DS<sub>2</sub>-VASc score at index date (low, medium, or high). The low CHA<sub>2</sub>DS<sub>2</sub>-VASc group included women with a score of 1 or 2 and men with a score of 1. The medium group included

**Table I** Characteristics of HF Patients with Incident AF and Matched Referents

	<b>AF Cases N = 4463</b>	<b>Referents without AF N = 17,792</b>
<b>Demographics</b>		
Age, years, mean (SD)	73.7 (11.4)	73.6 (11.3)
Female sex	1295 (29.0)	5148 (28.9)
<b>Lifestyle factors</b>		
Elevated alcohol consumption	362 (9.5)	1265 (8.3)
Smoking status		
Never	1065 (26.7)	4175 (25.7)
Former	1857 (46.6)	7530 (46.4)
Current	1064 (26.7)	4518 (27.9)
<b>Clinical data</b>		
LVEF		
<25%	1076 (24.7)	3654 (21.0)
25–40%	2671 (61.4)	11,140 (64.0)
>40–49%	296 (6.8)	1293 (7.4)
≥50%	311 (7.1)	1309 (7.5)
NYHA class		
I	499 (12.7)	2692 (16.6)
II	2361 (59.9)	9959 (61.3)
III/IV	1082 (27.5)	3592 (21.8)
<b>Time since HF, years, median (Q1–Q3)</b>	1.75 (0.82–3.95)	1.75 (0.82–3.93)
<b>Age at HF diagnosis, years, mean (SD)</b>	71.5 (11.4)	71.5 (11.3)
<b>History of comorbidity</b>		
Myocardial infarction	1397 (31.3)	6040 (34.0)
Any stroke/TIA	694 (15.6)	1889 (10.6)
Diabetes mellitus	969 (21.7)	3177 (16.9)
COPD	713 (16.0)	2103 (11.8)
Hypertension	2098 (47.0)	7430 (41.8)
Chronic kidney disease	468 (10.5)	1255 (7.1)
Overweight/obesity*	390 (8.7)	1018 (5.7)
Cancer	665 (14.9)	2099 (11.8)
<b>Current HF medication**</b>		
ACE inhibitors/ARBs	2841 (63.7)	9579 (53.8)
Beta-blockers	2679 (60.0)	8928 (50.2)
MRAs	1036 (23.2)	3333 (18.7)

**Notes:** We matched each HF patient with incident AF to up to 4 referents on age at diagnosis of HF, sex, and time since diagnosis of HF. Characteristics were collected at the time of AF diagnosis or corresponding age for referents, except alcohol consumption, smoking status, LVEF, and NYHA, which were collected at the time of HF diagnosis. Age is on the index date, which is AF diagnosis for AF cases. Missing, N (%): alcohol consumption: 3250 (14.6), smoking: 2046 (9.2), LVEF: 505 (2.3), NYHA: 2070 (9.3). \*Defined by ICD codes. \*\*Defined as fulfilling at least 1 prescription within 6 months prior to the index date.

**Abbreviations:** AF, atrial fibrillation; LVEF, left ventricular ejection fraction; NYHA, New York Heart Association; HF, heart failure; TIA, transient ischemic attack; COPD, chronic obstructive pulmonary disease; ACE, angiotensin converting enzyme; ARB, angiotensin receptor blocker; MRA, mineralocorticoid receptor antagonist.

women with a score of 3 to 5 and men with a score of 2 to 4. Finally, the high group included women with a score of >5 and men with a score of >4.<sup>18</sup> We tested for differences between subgroups by using meta-regression models. Furthermore, we performed two sensitivity analyses to account for the influence of underlying conditions with a high case-fatality rate. First, we excluded patients who died within 30 days after the HF diagnosis. Second, we excluded patients who died within 30 days after the diagnosis of AF.

## Ethics

Register-based studies with de-identified data and no active participation by study subjects do not require approval by an ethics committee in Denmark. The Danish Data Protection Agency approved the use of register-based data.

## Patient and Public Involvement

No patients were involved in the design of the study or interpretation of the findings, as we did not have patients or members of the public available to us with the level of methodological and statistical experience needed to examine the data.

## Results

### Patient Characteristics

The study population consisted of 4463 AF cases and 17,792 matched referents ([Supplemental Figure 2](#)). The median time from diagnosis of HF to diagnosis of AF was 1.8 years. The cumulative incidence of AF was 23.5% 10 years after the diagnosis of HF when accounting for the competing risk of death ([Supplemental Figure 3](#)). The mean age at the diagnosis of AF was 74 years, and 29% were female ([Table 1](#)). Hypertension and diabetes were the most prevalent comorbidities among cases and matched referents. The prevalent use of ACE inhibitors/ARBs, beta-blockers, and/or MRA was higher among cases. For oral anticoagulants, 49.4% received treatment after AF at 3 months, and 29.1% received treatment for antiplatelet drugs after AF diagnosis ([Supplemental Table 3](#)).

### Comparison of Survival Between HF Patients with and without AF

Among AF cases and referents, the median follow-up was 3.4 years from the index date. Among AF cases, 47.9% (N = 2138) died, and among referents, 26.0% (N = 4663) died. [Figure 1A](#) shows the marginal survival curves. The marginal cumulative mortality was higher among HF patients with AF. The absolute difference in marginal cumulative mortality risk between HF patients between with and without AF was 17.0% (95% CI 15.7–18.3) at 10 years ([Table 2](#)).

[Figure 1B](#) and [Table 2](#) show the marginal RMST among HF patients with and without AF. The difference in marginal RMST between HF patients with and without AF was –18.2 months (95% CI –16.8 to –19.6) at 10 years after the index date ([Table 2](#) and [Figure 1C](#)). Thus, HF patients with AF lose on average 1.5 years of life expectancy over 10 years following their AF diagnosis.

The corresponding marginal HRs were 1.81 (95% CI 1.76–1.85) at 1 year, 1.57 (95% CI 1.53–1.60) at 5 years, and 1.41 (95% CI 1.38–1.44) at 10 years. However, there was evidence of non-proportional hazards ( $p < 0.001$ ) and the marginal HRs decreased over time ([Supplemental Figure 4](#)).

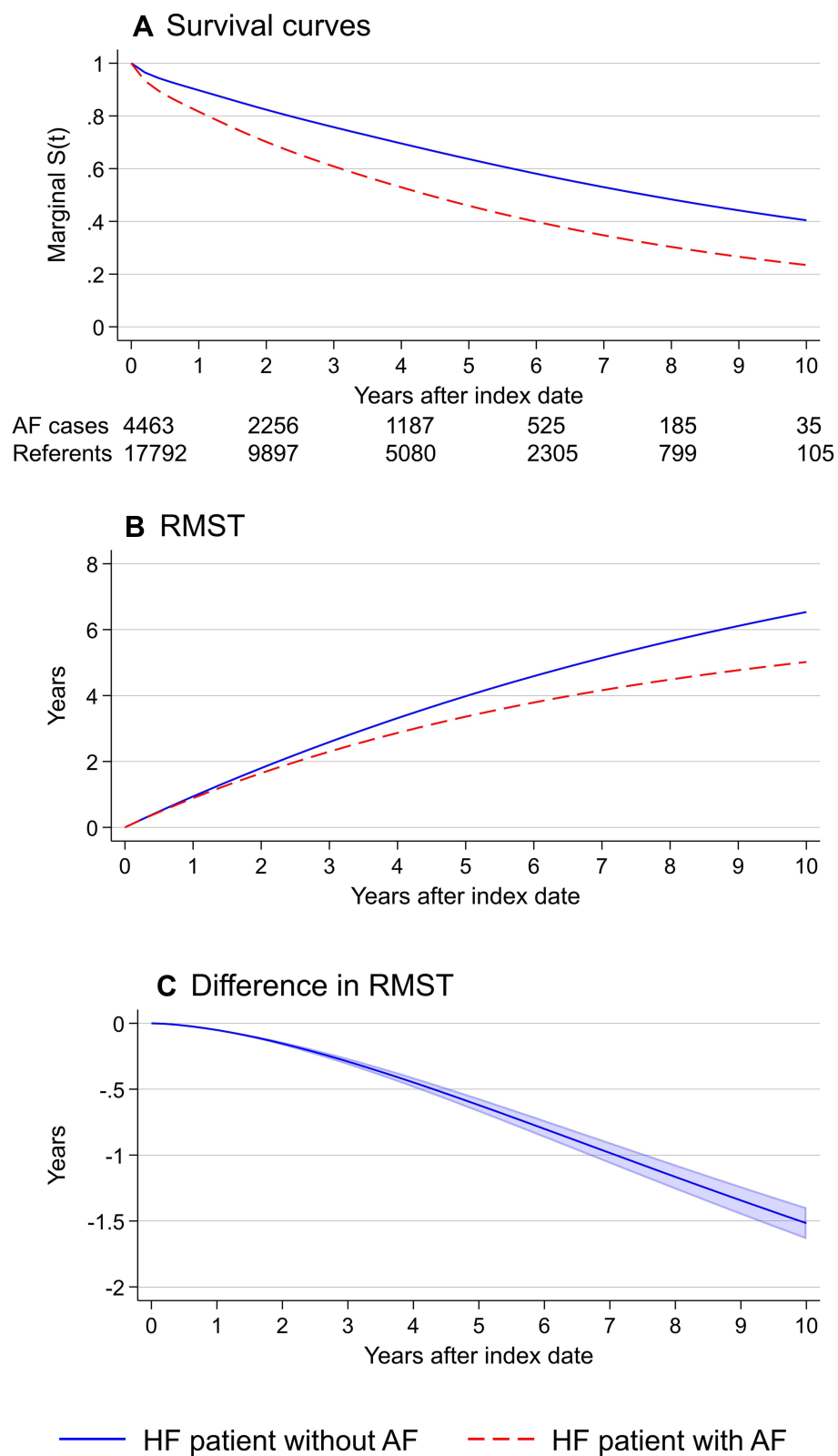
### Subgroup and Sensitivity Analyses

At 10 years, we found that the loss in expected lifetime was greater among patients diagnosed with AF more than 1 year after the diagnosis of HF, female patients, and patients with higher CHA<sub>2</sub>DS<sub>2</sub>-VASc score ([Table 3](#)). We found no substantial difference between age groups or across LVEF groups. All stratified baseline characteristics and detailed results are given in [Supplemental Tables 4–14](#) and [Supplemental Figures 5–14](#). In sensitivity analyses, results were consistent with the main analyses ([Supplemental Tables 15](#) and [16](#)).

## Discussion

In this nationwide study of patients with incident HF, we found that patients diagnosed with incident AF lose on average 1.5 life-years over 10 years after AF diagnosis. Life-years lost were larger among patients diagnosed with AF >1 year after HF, women, and patients with a high CHA<sub>2</sub>DS<sub>2</sub>-VASc score. We found no substantial differences between the age groups or across the LVEF subgroups.

Previous work on AF and HF relied on Cox proportional hazards models to assess associations.<sup>5,6</sup> The results were generally expressed in terms of HRs, which measure relative and not absolute effects. It can then be difficult to interpret



**Figure 1** (A) Marginal survival curves, (B) marginal restricted mean survival times, and (C) difference between marginal restricted mean survival times with 95% confidence interval. Marginal curves adjusted for characteristics in Table 1.



**Table 2** Differences in Marginal Cumulative Mortality Risks and Restricted Mean Survival Times Between HF Patients with and without AF

	Time After Diagnosis of AF		
	1 Year	5 Years	10 years
<b>Marginal cumulative mortality (%)</b>			
HF patients with AF	18.4 (17.6–19.2)	54.1 (52.8–55.4)	76.5 (75.1–78.0)
HF patients without AF	10.3 (9.9–10.7)	36.4 (35.6–37.2)	59.6 (58.1–61.1)
Risk difference	8.1 (7.4–8.8)	17.7 (16.3–19.1)	17.0 (15.7–18.3)
<b>Marginal restricted mean survival times (months)</b>			
HF patients with AF	10.7 (10.6–10.7)	40.3 (39.8–40.9)	60.2 (58.9–61.5)
HF patients without AF	11.3 (11.2–11.3)	47.8 (47.5–48.1)	78.8 (77.6–79.3)
Difference in RMST	–0.6 (–0.6–0.7)	–7.5 (–6.8–8.1)	–18.2 (–16.8–19.6)

**Notes:** HF patients with and without AF were matched on age, sex, and time since HF. Analyses were adjusted for all covariates in Table 1. Over the 10 years following their AF diagnosis, HF patients can expect to live for 60.2 months ~ 5 years. Over 10 years following their AF diagnosis, HF patients with AF will live 18.2 month ~1.5 years less as compared to HF patients without AF.

**Abbreviation:** RMST, restricted mean survival times.

**Table 3** Difference in Marginal Cumulative Mortality Risks and Restricted Mean Survival Times at 10 Years Between HF Patients with and without AF Among Subgroups

	Numbers of AF Cases/Referents	Difference in 10-Year Mortality Risk Between HF Patients with and without AF (%)	P value Between Subgroups	Difference in 10-Year RMST Between HF Patients with and without AF (Months)	P value Between Subgroups
AF diagnosis >1 year of HF diagnosis	2384/9712	22.2 (20.5–24.0)	<0.001	–25.7 (–23.7–27.7)	<0.001
AF diagnosis ≤ 1 year of HF diagnosis	2079/8080	10.3 (8.2–12.3)		–10.4 (–8.2–12.5)	
Women	1295/5148	16.7 (14.6–18.9)	0.94	–20.3 (–17.7–22.9)	0.05
Men	3168/12,644	16.8 (15.2–18.4)		–17.2 (–15.5–19.0)	
Age ≥75 years	1875/7464	12.9 (11.4–14.5)	<0.001	–20.1 (–17.9–22.2)	0.16
Age <75 years	2588/10,328	21.8 (19.3–24.4)		–17.8 (–15.6–20.0)	
LVEF ≤40%	3747/14,930	16.9 (15.5–18.4)	0.76	–17.9 (–16.3–19.5)	0.62
LVEF >40–<50%	286/1082	17.8 (12.3–23.4)		–18.1 (–12.3–23.9)	
LVEF ≥50%	305/1123	18.7 (13.9–23.6)		–20.7 (–15.2–26.3)	
CHA <sub>2</sub> DS <sub>2</sub> -VASc low	382/1520	13.5 (6.1–20.9)	0.50	–10.3 (–4.6–16.1)	0.002
CHA <sub>2</sub> DS <sub>2</sub> -VASc medium	2959/11,801	17.7 (16.0–19.4)		–18.5 (–16.7–20.4)	
CHA <sub>2</sub> DS <sub>2</sub> -VASc high	1122/4471	16.8 (14.4–19.3)		–22.1 (–18.8–22.3)	

**Notes:** Adjusted for all covariates in Table 1, except the variable used to stratify. CHA<sub>2</sub>DS<sub>2</sub>VASc groups: Low: women 1–2; men 1. Medium: women 3–5; men 2–4. High: women >5; men >4.

**Abbreviations:** AF, atrial fibrillation; RMST, restricted mean survival time; LVEF, left ventricular ejection fraction.

the clinical significance of the magnitude of the excess mortality risk. HRs are not meaningful when there is a departure from proportional hazards. In our analysis, the HR decreased from ~1.9 down to ~1.4 over time. We quantified the association between newly diagnosed AF and mortality among HF patients in terms of absolute risks and mean survival times, which do not rely on the proportional hazards assumption. These measures are easily interpretable and may support clinical decision-making. Additionally, the considerable loss in life expectancy highlights the need to prevent the development of AF to improve the prognosis in the high-mortality risk population of HF patients.<sup>19</sup>



In our study sample, the cumulative incidence of AF at 10 years after the diagnosis of incident HF was 24%, comparable with cumulative incidence of 20% after 8 years among patients with prevalent HF in the Framingham Heart Study (FHS).<sup>6</sup> Several community-based studies previously examined the association between incident AF and mortality rates among HF patients. The FHS and the Olmsted County Cohort reported that incident AF in HF was associated with an HR of 1.89 (95% CI 1.51–2.38) and 2.22 (95% CI 1.93–2.57) for all-cause mortality, respectively.<sup>5,6</sup> A recent Danish study reported a higher mortality rate ratio of 4.32 (95% CI 4.86–5.02).<sup>20</sup> However, Barillas-Lara et al were unable to adjust for clinical characteristics, such as LVEF and NYHA class. Identification of HF patients used the general patient registry instead of the DHFR. In our analysis, the HRs for AF and all-cause death in HF were consistent with results from the FHS and Olmsted County Cohort; however, we found that the association decreased over time, from an HR of 1.81 at 1 year to an HR of 1.41 at 10 years after AF. A decline in mortality risk over time may suggest that AF is often diagnosed in connection with symptomatic or hemodynamic deterioration or another acute HF-related event with high short-term mortality such as acute myocardial infarction. We found consistent findings in a sensitivity analysis after excluding patients dying within 30 days after AF.

The expected loss of lifetime was markedly increased among patients diagnosed with AF beyond 1 year after the diagnosis of HF compared to patients diagnosed within 1 year after HF. Data from the Olmsted County Cohort highlighted a similar difference (3-fold increased rate vs 1.5-fold increased rate).<sup>5</sup> A possible explanation may be that incident AF beyond 1 year is a marker of HF progression and/or frailty in HF.<sup>7,21</sup> Our sex-specific analysis revealed that incident AF was associated with a greater loss in expected lifetime among women than men.<sup>22</sup> AF is associated with higher mortality among women in the non-HF setting, and our data support recent work that shows higher mortality among women in an HF-setting.<sup>20</sup> There was no evidence of difference between age groups with regard to life-years lost, which is consistent with the study by Barillas-Lara et al.<sup>20</sup> However, the difference in mortality risk between HF patients with and without AF was larger among those <75 years. Interactions depend on the analysis scale, and interaction on the cumulative risk scale is mathematically possible without interaction on the RMST scale.<sup>23</sup> Similarly, there was no evidence of difference across the three LVEF groups. The FHS study and the Olmsted County cohort study reported similar findings of no substantial difference between HF with reduced and preserved LVEF,<sup>5,6</sup> and a meta-analysis supported this finding.<sup>8</sup>

Recent trials on the management of patients with AF and HF may indicate treatment strategies relating to how the number of lost life-years to AF may be reduced. Compared to medical therapy, catheter ablation was associated with a lower rate of the composite end point of all-cause mortality or hospitalization for worsening HF.<sup>24</sup> Early rhythm-control therapy was associated with a lower risk of adverse cardiovascular outcomes than usual care among patients with early AF and HF.<sup>25</sup> Recent evidence suggest that electrical cardioversion of AF in concomitant HF with reduced LVEF improves LVEF rapidly.<sup>26</sup> Catheter ablation may be superior to medical rhythm control in improving LVEF in the long term.<sup>27</sup> However, no studies have so far quantified the improvement in absolute life-years concerning catheter ablation and/or early rhythm control. Multidisciplinary structured care specifically addressing patients with both HF and AF has to be developed and tested using usual care as a comparator.

## Limitations

We may have missed patients with prior AF whose diagnosis was not recorded or not recognized in the registries. We were unable to clinically evaluate the patients for undiagnosed AF, use systematic Holter-based screening, examine electrocardiograms to validate the diagnosis, and classify the type of AF. Studies that validated the AF diagnosis coded in the registry have shown positive predictive values of 92% and 95%.<sup>28,29</sup> However, non-differential misclassification of AF registration is possible.

A small percentage of participants had missing covariate values and, considering that the missing-at-random or missing-completely-at-random assumptions were plausible, we performed multiple imputation analyses. We did not explore how large a missing-not-at-random mechanism would need to be to influence our findings, and we did not explore nonignorable imputation model to potentially adjust these analyses.

In the analysis stratified by LVEF group, we excluded patients with missing LVEF. These patients included mainly women and patients of higher age. As female patients may have the greatest loss of expected lifetime associated with AF,

we may have underestimated the difference in RMST. We adjusted for several relevant covariates but cannot rule out residual confounding. For instance, we had no data on body mass index or genetics. Furthermore, some of the clinical characteristics data, such as LVEF, were ascertained at the diagnosis of HF and may have changed over years.

The somehow restrictive inclusion and exclusion criteria of the DHFR and the fact that the population consisted mainly of European ancestry may reduce the generalizability of our results. Furthermore, the prevalence of HF with preserved LVEF was lower compared to most population-based studies.<sup>30</sup> Hence, the generalizability of our findings to HF with preserved LVEF, which excessively affects women, is uncertain. We examined newly diagnosed AF after HF, and we cannot generalize the findings to patients in whom AF was the cause of HF.

## Conclusions

This nationwide study shows that HF patients diagnosed with incident AF lose on average 1.5 life-years over 10 years after AF diagnosis. The mean number of life-years lost was larger among HF patients diagnosed with AF more than 1 year after HF, female patients, and patients with higher CHA<sub>2</sub>DS<sub>2</sub>-VASc score.

## Abbreviations

ACE, angiotensin-converting enzyme; AF, atrial fibrillation; ARB, angiotensin II receptor blockers; DHFR, Danish Heart Failure Registry; FHS, Framingham Heart Study; HF, heart failure; HR, hazard ratio; LVEF, left ventricular ejection fraction; MRA, mineralocorticoid receptor antagonists; NYHA, New York Heart Association; RMST, restricted mean survival time; 95% CI, 95% confidence interval.

## Data Sharing Statement

Permission to access the data used in this study can be obtained following approval from the Danish Health Authority.

## Funding

This project was supported by grants from the Health Research Fund of Central Denmark Region (R38-A1385-B1044) and The Danish Heart Foundation (16-R107-A3987). Dr Benjamin is supported in part by 2R01 HL092577; 1R01 HL141434; 2U54HL120163; 1R01AG066010; 1R01AG066914; American Heart Association, AHA\_18SFRN34110082. Dr Frost is supported by the Health Research Foundation of Central Denmark Region. Dr Trinquart is supported by the American Heart Association 18SFRN34150007.

## Disclosure

GYHL is a consultant and speaker for BMS/Pfizer, Boehringer Ingelheim and Daiichi-Sankyo. No fees are received personally. LF is a member of Advisory Boards for Pfizer, BMS and MSD. The authors report no other conflicts of interest in this work.

This project was presented at the AHA Scientific Sessions 2021 Conference as a poster presentation with interim findings. The poster's abstract was published as Abstract 13838 in *Circulation*. 2021;144(Suppl\_1):A13838-A13838.

## References

1. Bragazzi NL, Zhong W, Shu J, et al. Burden of heart failure and underlying causes in 195 countries and territories from 1990 to 2017. *Eur J Prev Cardiol*. 2021;28(15):1682–1690. doi:10.1093/eurjpc/zwaa147
2. Virani SS, Alonso A, Aparicio HJ, et al. Heart disease and stroke statistics-2021 update: a report from the American Heart Association. *Circulation*. 2021;143(8):e254–e743. doi:10.1161/CIR.0000000000000950
3. Huffman MD, Berry JD, Ning H, et al. Lifetime risk for heart failure among white and black Americans: cardiovascular lifetime risk pooling project. *J Am Coll Cardiol*. 2013;61(14):1510–1517. doi:10.1016/j.jacc.2013.01.022
4. Bleumink GS, Knetsch AM, Sturkenboom MC, et al. Quantifying the heart failure epidemic: prevalence, incidence rate, lifetime risk and prognosis of heart failure The Rotterdam Study. *Eur Heart J*. 2004;25(18):1614–1619. doi:10.1016/j.ehj.2004.06.038
5. Chamberlain AM, Redfield MM, Alonso A, Weston SA, Roger VL. Atrial fibrillation and mortality in heart failure: a community study. *Circ Heart Fail*. 2011;4(6):740–746. doi:10.1161/CIRCHEARTFAILURE.111.962688
6. Santhanakrishnan R, Wang N, Larson MG, et al. Atrial fibrillation begets heart failure and vice versa: temporal associations and differences in preserved versus reduced ejection fraction. *Circulation*. 2016;133(5):484–492. doi:10.1161/CIRCULATIONAHA.115.018614

7. Aleong RG, Sauer WH, Davis G, Bristow MR. New-onset atrial fibrillation predicts heart failure progression. *Am J Med.* 2014;127(10):963–971. doi:10.1016/j.amjmed.2014.06.006
8. Odutayo A, Wong CX, Williams R, Hunn B, Emdin CA. Prognostic importance of atrial fibrillation timing and pattern in adults with congestive heart failure: a systematic review and meta-analysis. *J Card Fail.* 2017;23(1):56–62. doi:10.1016/j.cardfail.2016.08.005
9. Lubitz SA, Benjamin EJ, Ellinor PT. Atrial fibrillation in congestive heart failure. *Heart Fail Clin.* 2010;6(2):187–200. doi:10.1016/j.hfc.2009.11.001
10. Al-Khatib SM, Benjamin EJ, Albert CM, et al. Advancing research on the complex interrelations between atrial fibrillation and heart failure: a report from a us national heart, lung, and blood institute virtual workshop. *Circulation.* 2020;141(23):1915–1926. doi:10.1161/CIRCULATIONAHA.119.045204
11. Staerk L, Preis SR, Lin H, et al. Novel risk modeling approach of atrial fibrillation with restricted mean survival times: application in the Framingham heart study community-based cohort. *Circ Cardiovasc Qual Outcomes.* 2020;13(4):e005918. doi:10.1161/CIRCOUTCOMES.119.005918
12. Vinter N, Huang Q, Fenger-Grøn M, Frost L, Benjamin EJ, Trinquart L. Trends in excess mortality associated with atrial fibrillation over 45 years (Framingham Heart Study): community based cohort study. *BMJ.* 2020;370:m2724. doi:10.1136/bmj.m2724
13. Conner SC, Sullivan LM, Benjamin EJ, LaValley MP, Galea S, Trinquart L. Adjusted restricted mean survival times in observational studies. *Stat Med.* 2019;38(20):3832–3860. doi:10.1002/sim.8206
14. Weir IR, Marshall GD, Schneider JI, et al. Interpretation of time-to-event outcomes in randomized trials: an online randomized experiment. *Ann Oncol.* 2019;30(1):96–102. doi:10.1093/annonc/mdy462
15. Schjodt I, Nakano A, Egstrup K, Cerqueira C. The Danish heart failure registry. *Clin Epidemiol.* 2016;8:497–502. doi:10.2147/CLEP.S99504
16. Bozkurt B, Coats AJS, Tsutsui H, et al. Universal definition and classification of heart failure: a report of the heart failure society of America, heart failure association of the European society of cardiology, Japanese heart failure society and writing committee of the universal definition of heart failure: endorsed by Canadian heart failure society, heart failure association of India, the cardiac society of Australia and New Zealand, and the Chinese Heart Failure Association. *Eur J Heart Fail.* 2021;23(3):252–380.
17. Sjölander A. Regression standardization with the R package stdReg. *Eur J Epidemiol.* 2016;31(6):563–574. doi:10.1007/s10654-016-0157-3
18. Hindricks G, Potpara T, Dagres N, et al. 2020 ESC guidelines for the diagnosis and management of atrial fibrillation developed in collaboration with the European Association of Cardio-Thoracic Surgery (EACTS): the task force for the diagnosis and management of atrial fibrillation of the European Society of Cardiology (ESC) Developed with the special contribution of the European Heart Rhythm Association (EHRA) of the ESC. *Eur Heart J.* 2020;42(5):373–498.
19. Kotecha D, Piccini JP. Atrial fibrillation in heart failure: what should we do? *Eur Heart J.* 2015;36(46):3250–3257. doi:10.1093/eurheartj/ehv513
20. Barillas-Lara MI, Monahan K, Helm RH, et al. Sex-specific prevalence, incidence, and mortality associated with atrial fibrillation in heart failure. *JACC Clin Electrophysiol.* 2021;7(11):1366–1375. doi:10.1016/j.jacep.2021.02.021
21. Pulignano G, Del Sindaco D, Tinti MD, et al. Atrial fibrillation management in older heart failure patients: a complex clinical problem. *Heart Int.* 2016;11(1):e41–e49. doi:10.5301/heartint.5000230
22. Magnussen C, Niiranen TJ, Ojeda FM, et al. Sex differences and similarities in atrial fibrillation epidemiology, risk factors, and mortality in community cohorts: results from the BiomarcARE consortium (biomarker for cardiovascular risk assessment in Europe). *Circulation.* 2017;136(17):1588–1597. doi:10.1161/CIRCULATIONAHA.117.028981
23. Rothman KJ, Lash TL, VanderWeele TJ, Haneuse S. *Modern Epidemiology*. 4th Kluwer W; 2021.
24. Marrouche NF, Brachmann J, Andresen D, et al. Catheter ablation for atrial fibrillation with heart failure. *N Engl J Med.* 2018;378(5):417–427. doi:10.1056/NEJMoa1707855
25. Kirchhof P, Camm AJ, Goette A, et al. Early rhythm-control therapy in patients with atrial fibrillation. *N Engl J Med.* 2020;383(14):1305–1316. doi:10.1056/NEJMoa2019422
26. Müller-Edenborn B, Minners J, Allgeier J, et al. Rapid improvement in left ventricular function after sinus rhythm restoration in patients with idiopathic cardiomyopathy and atrial fibrillation. *Europace.* 2019;21(6):871–878. doi:10.1093/europace/euz013
27. Sugumar H, Prabhu S, Costello B, et al. Catheter ablation versus medication in atrial fibrillation and systolic dysfunction: late outcomes of CAMERA-MRI study. *JACC Clin Electrophysiol.* 2020;6(13):1721–1731. doi:10.1016/j.jacep.2020.08.019
28. Schmidt M, Schmidt SA, Sandegaard JL, Ehrenstein V, Pedersen L, Sorensen HT. The Danish National Patient Registry: a review of content, data quality, and research potential. *Clin Epidemiol.* 2015;7:449–490. doi:10.2147/CLEP.S91125
29. Sundboll J, Adelborg K, Munch T, et al. Positive predictive value of cardiovascular diagnoses in the Danish National Patient Registry: a validation study. *BMJ Open.* 2016;6(11):e012832. doi:10.1136/bmjopen-2016-012832
30. Pfeffer MA, Shah AM, Borlaug BA. Heart failure with preserved ejection fraction in perspective. *Circ Res.* 2019;124(11):1598–1617. doi:10.1161/CIRCRESAHA.119.313572

## Clinical Epidemiology

Dovepress

## Publish your work in this journal

Clinical Epidemiology is an international, peer-reviewed, open access, online journal focusing on disease and drug epidemiology, identification of risk factors and screening procedures to develop optimal preventative initiatives and programs. Specific topics include: diagnosis, prognosis, treatment, screening, prevention, risk factor modification, systematic reviews, risk & safety of medical interventions, epidemiology & biostatistical methods, and evaluation of guidelines, translational medicine, health policies & economic evaluations. The manuscript management system is completely online and includes a very quick and fair peer-review system, which is all easy to use.

Submit your manuscript here: <https://www.dovepress.com/clinical-epidemiology-journal>