

Genetic Rescue of the Highly Inbred Norwegian Lundehund

Melis, Claudia; Pertoldi, Cino; Ludington, William Basil; Beuchat, Carol; Qvigstad, Gunnar; Stronen, Astrid Vik

Published in:
genes

DOI (link to publication from Publisher):
[10.3390/genes13010163](https://doi.org/10.3390/genes13010163)

Creative Commons License
CC BY 4.0

Publication date:
2022

Document Version
Publisher's PDF, also known as Version of record

[Link to publication from Aalborg University](#)

Citation for published version (APA):

Melis, C., Pertoldi, C., Ludington, W. B., Beuchat, C., Qvigstad, G., & Stronen, A. V. (2022). Genetic Rescue of the Highly Inbred Norwegian Lundehund. *genes*, 13(1), Article 163. <https://doi.org/10.3390/genes13010163>

General rights

Copyright and moral rights for the publications made accessible in the public portal are retained by the authors and/or other copyright owners and it is a condition of accessing publications that users recognise and abide by the legal requirements associated with these rights.

- Users may download and print one copy of any publication from the public portal for the purpose of private study or research.
- You may not further distribute the material or use it for any profit-making activity or commercial gain
- You may freely distribute the URL identifying the publication in the public portal -

Take down policy

If you believe that this document breaches copyright please contact us at vbn@aub.aau.dk providing details, and we will remove access to the work immediately and investigate your claim.

Article

Genetic Rescue of the Highly Inbred Norwegian Lundehund

Claudia Melis ^{1,*}, Cino Pertoldi ^{2,3}, William Basil Ludington ^{4,5}, Carol Beuchat ⁶, Gunnar Qvigstad ^{7,8} and Astrid Vik Stronen ^{2,9}

- ¹ Department of Nature, Environment and Health, Queen Maud University College, Thron Nergaards Veg 7, 7044 Trondheim, Norway
- ² Department of Chemistry and Bioscience, Aalborg University, Fredrik Bajers Vej 7H, 9220 Aalborg Øst, Denmark; cp@bio.aau.dk (C.P.); astrid.stronen@gmail.com (A.V.S.)
- ³ Aalborg Zoo, Mølleparkvej 63, 9000 Aalborg Øst, Denmark
- ⁴ Department of Embryology, Carnegie Institution for Science, Baltimore, MD 21218, USA; will.ludington@gmail.com
- ⁵ Department of Biology, Johns Hopkins University, Baltimore, MD 21218, USA
- ⁶ Institute of Canine Biology, Mission Viejo, CA 92691, USA; carol@instituteofcaninebiology.org
- ⁷ Department of Clinical and Molecular Medicine, Faculty of Medicine and Health Sciences, Norwegian University of Science and Technology (NTNU), 7491 Trondheim, Norway; gunnarq@ntnu.no
- ⁸ Department of Gastroenterology and Hepatology, St Olav's Hospital, Trondheim University Hospital, 7006 Trondheim, Norway
- ⁹ Department of Biology, Biotechnical Faculty, University of Ljubljana, Večna pot 111, 1000 Ljubljana, Slovenia
- * Correspondence: cme@dmmh.no

Abstract: Augmenting the genetic diversity of small, inbred populations by the introduction of new individuals is often termed “genetic rescue”. An example is the Norwegian Lundehund, a small spitz dog with inbreeding-related health problems that is being crossed with three Nordic breeds, including the Norwegian Buhund. Conservation breeding decisions for the (typically) small number of outcrossed individuals are vital for managing the rescue process, and we genotyped the Lundehund ($n = 12$), the Buhund ($n = 12$), their crosses ($F1$, $n = 7$) and first-generation backcrosses to the Lundehund ($F2$, $n = 12$) with >170,000 single nucleotide polymorphism loci to compare their levels of genetic diversity. We predicted that genome-wide diversity in $F2$ dogs would be higher than in the Lundehund but lower than in the $F1$ and the Buhund, and the heterozygosity values showed the expected patterns. We also found that runs of homozygosity, extended chromosomal regions of homozygous genotypes inherited from a common ancestor, were reduced in $F2$ individuals compared with Lundehund individuals. Our analyses demonstrate the benefits of outcrossing but indicate that some of the acquired genetic diversity is lost following immediate backcrossing. Additional breeding among $F2$ crosses could therefore merit from further consideration in genetic rescue management.

Keywords: conservation breeding; domestic dogs; genetic diversity; native breeds; outcrossing; population recovery



Citation: Melis, C.; Pertoldi, C.; Ludington, W.B.; Beuchat, C.; Qvigstad, G.; Stronen, A.V. Genetic Rescue of the Highly Inbred Norwegian Lundehund. *Genes* **2022**, *13*, 163. <https://doi.org/10.3390/genes13010163>

Academic Editor: Benjamin N. Sacks

Received: 15 December 2021

Accepted: 14 January 2022

Published: 17 January 2022

Publisher's Note: MDPI stays neutral with regard to jurisdictional claims in published maps and institutional affiliations.



Copyright: © 2022 by the authors. Licensee MDPI, Basel, Switzerland. This article is an open access article distributed under the terms and conditions of the Creative Commons Attribution (CC BY) license (<https://creativecommons.org/licenses/by/4.0/>).

1. Introduction

1.1. Genetic Rescue in Domestic and Wild Populations

Increasing the genetic variability of small, isolated populations by the spontaneous or human-planned introduction of new individuals is often referred to as “genetic rescue” [1–4]. The positive effect of this management tool has been documented both in domestic and wild populations [1], although the long-term outcome can be difficult to evaluate [5], and some concerns exist that genetic rescue might lead to outbreeding depression [6]. Despite breeds of domestic dog (*Canis lupus familiaris*) being comparable to small and closed populations with a high frequency of breed-specific genetic disorders, genetic rescue by outcrossing with individuals of another breed is not a well-established practice among breeders. The main reasons for this are concerns about (1) contaminating lineage

“purity”, (2) losing breed-specific phenotypic traits and (3) incorporating “new” genetic diseases from other dog breeds (unwanted introgression of deleterious alleles) [7].

Nevertheless, genetic disorders are likely to be less prevalent in a dog breed if a large, and therefore diverse, gene pool is maintained. Alleles with a negative effect on fitness are present in any population but only at low frequencies due to natural selection. However, when genetic variability is reduced, the frequency of such alleles will increase, whereby genetic disorders suddenly “appear” in the gene pool [7]. For this reason, it is challenging to manage genetic disorders by test screening in small populations. By excluding affected individuals from reproduction, we are also reducing the number of mating individuals (the effective population size) and, thus, the gene pool.

One important limitation of outcrossing programs for small populations, as revealed by computer simulations of different breeding schemes, is that outcrossing followed by backcrossing to the original population might only provide a short-term rescue effect, unless outcrossing is repeated continuously [7]. This is also supported by well-documented examples of genetic rescue in small and isolated wildlife populations, such as wolves (*C. lupus*) in Isle Royal and island foxes (*Urocyon littoralis*) [8].

Some examples of outcrossing in dog breeding are described on various web pages, although these efforts were initiated privately and are, as far as we know, not yet scientifically documented. For example, in 1973, the Pointer was crossbred to the Dalmatian by the geneticist and Dalmatian breeder Robert Schaible, because all Dalmatians worldwide tested positive for a metabolic illness called hyperuricosuria [9]. The first request to register a litter of Pointer × Dalmatian dogs to the American Kennel Club (AKC) was carried out in 1980, after five generations of backcrossing to Dalmatians to recover all breed-specific phenotypic traits. However, it took almost 30 years of controversy before more descendants of this backcrossing project could be registered to AKC [9]. Similarly, to avoid tail docking in Boxers, two Corgi × Boxer females were backcrossed to the Boxer in 1992 by the geneticist and Boxer breeder Dr. Bruce Cattanaach [10], and a line of short-tailed (bobtail) Boxers that carry the dominant bobtail gene was developed in the United Kingdom.

In 2011, the Irish Kennel Club (IKC) established an outcrossing program between the Irish Red and White Setter and the Irish Setter and, in 2017, made a call to breeders worldwide to participate in the international outcrossing program to increase the genetic diversity of the Irish Red and White Setter [11]. However, it was only possible to access an archived copy of the announcement made by the IKC on the web [11], and, to our knowledge, no scientific publications or systematic documentation of the progress and results of this ongoing project have yet been made available.

1.2. Breed History and Typical Traits

The Norwegian Lundehund (hereafter Lundehund) is a small spitz dog traditionally used to hunt Atlantic puffins (*Fratercula arctica*, hereafter puffins) on steep cliffs along the northern coast of Norway. The breed is considered a cultural heritage and has several unique phenotypic traits, such as enhanced flexibility of the neck and shoulder joints, foldable ears and extra toes (polydactyly) on both front and back legs [12]. These peculiar traits might be the result of both natural and artificial selection, as they offer advantages when searching and retrieving puffins. The high flexibility of the joints would allow better mobility in narrow tunnels at the end of which puffins nest. Foldable ears would prevent dirt and parasites from entering the ears when working underground, and the combination of high flexibility and polydactyly would ensure better grip on the steep and loose terrain of the cliffs [13]. The small population suffered two bottlenecks in the 1940s and the 1960s, which resulted in the Lundehund being among the dog breeds with the highest reported inbreeding, as measured by microsatellite markers [12], single nucleotide polymorphisms (SNPs) [14,15] and genealogical data [16].

Due to a major effort to rescue the breed, today, there are about 1500 Lundehund individuals in the world, and about 900 of these live in Norway (<https://natron.v.m>.

ntnu.no/nlk accessed on 10 January 2021). Therefore, the breed is not at immediate risk of extinction.

However, the effective population size (N_e) of the global Lundehund population was estimated to be very low based both on pedigree data [16] ($N_e = 13$) and on molecular data [17] ($N_e = 28$). Moreover, the Lundehund shows signs of inbreeding depression by reduced fertility due to small litter size, problems with mating behavior (probably due to inbreeding avoidance mechanisms) and low sperm quality [16]. Additionally, the Lundehund has a predisposition to develop intestinal lymphangiectasia, a protein-losing enteropathy that can cause symptoms such as intermittent diarrhea, vomiting, weight loss and ascites, often reported as the “Lundehund syndrome” (hereafter LS). In addition, chronic atrophic gastritis and gastric neoplasms are common in dogs with LS [14,15,17–21]. For this reason, breeders inform future owners about potential symptoms that could arise and require immediate veterinary treatment. Moreover, they advise new owners to feed their dogs with a diet low in fat content. Despite these preventive efforts, a study on mortality causes in the Lundehund conducted in 2010–2012 showed that 30% of deaths before 11 years of age occurred as a consequence of LS and another 10% of other gastrointestinal diseases [22]. Moreover, many dogs experience several acute episodes of LS throughout their lives, which require expensive treatment and negatively affect their quality of life. The pattern of inheritance of LS is not well understood [21] and might, at least in part, be explained by polygenic inheritance and a high frequency—or fixation—of the responsible gene(s).

1.3. The Outbreeding Project

These issues raised the question of whether it was ethical to continue breeding the Lundehund, and they motivated the Norwegian Kennel Club (NKK) to start an outbreeding project in 2014, which is still ongoing [16,23]. The aims of the project are to (1) increase the genetic variability of the breed, (2) improve fertility and (3) reduce the occurrence of LS in the population, while, at the same time, maintaining the unique traits of this breed [16,24].

Based on behavioral and morphological traits, shared history and genetic distance, three candidate breeds for outcrossing were selected by the NKK: the Norwegian Buhund (hereafter Buhund) (Figure 1b), the Norrbottenspets (from Sweden) and the Icelandic sheepdog [23].

The plan is to keep the crossings with these three breeds as three separate lineages with their own studbook and to monitor them for several generations before considering their inclusion in the Lundehund population and registering them in the main Lundehund studbook. All dogs used in the project were carefully selected based on health requirements established by the NKK, and each combination of Lundehund \times Buhund also had to be approved by the NKK. Because the Buhund (12–18 kg) is larger than the Lundehund (6–9 kg), the first generation of crosses was made by mating a Buhund dam with a Lundehund sire. The Buhund dam should fulfil several requirements to be included in the project, such as to have grade A or B hip dysplasia (HD), grade 0 patella luxation (dislocated kneecap), be free of hereditary eye disorders, have a good temperament and generally have good health, confirmed by a health certificate. The same requirements, except HD status, applied to the Lundehund sire. In addition, both the Buhund and the Lundehund should have proven their fertility by having had litters before. These rather strict requirements, in addition to the difficulty in finding Buhund dam owners who were willing to let their dogs participate in the outcrossing project, limited the number of crossings that could be performed. The first two litters of the Lundehund \times Buhund crosses were born in 2014, and their offspring was bred back to the Lundehund (Appendix A). All crosses are evaluated for good health, morphology and behavior at two years of age by a team of specialists, including a certified judge, before inclusion in the breeding project. The dogs are also checked for HD, patella luxation and hereditary eye diseases by a veterinarian officially recognized by NKK, as these conditions are present in the Buhund population. However, the Lundehund is not usually affected by these conditions, and NKK does not require any genetic test to breed

them, which also allows a further reduction in the gene pool to be avoided. Individuals with serious behavioral issues (signs of fear or aggression) or health-related issues, such as monorchism or a severe degree of hip dysplasia, are excluded from the breeding project. Although individuals with light dysplasia are not given priority, these can nonetheless still be bred with healthy individuals. At this stage of the outbreeding project, the criteria for inclusion in breeding rely on health and behavior only and not on exterior appearance. The second-generation crosses produced by the project show all the specific traits, such as polydactyly, foldable ears and joint flexibility, whereas there is still a relatively large morphological variation in size, bone structure and ear shape. This variation would be rather normal in other dog breeds with a more diverse genetic pool, but with their reduced genetic variation, Lundehund individuals tend to show very low morphological variation. To date, none of the F1 and F2 individuals have shown signs of developing LS, although we should underline that the oldest F2 individuals are only five years old, and the success of the outbreeding project should be evaluated on a longer term. For the nine litters of F2 individuals that have been produced to date, the mean litter size was = 4.2 and the median was = 5, whereas for the Lundehund, both mean and median litter sizes were = 3 [25].

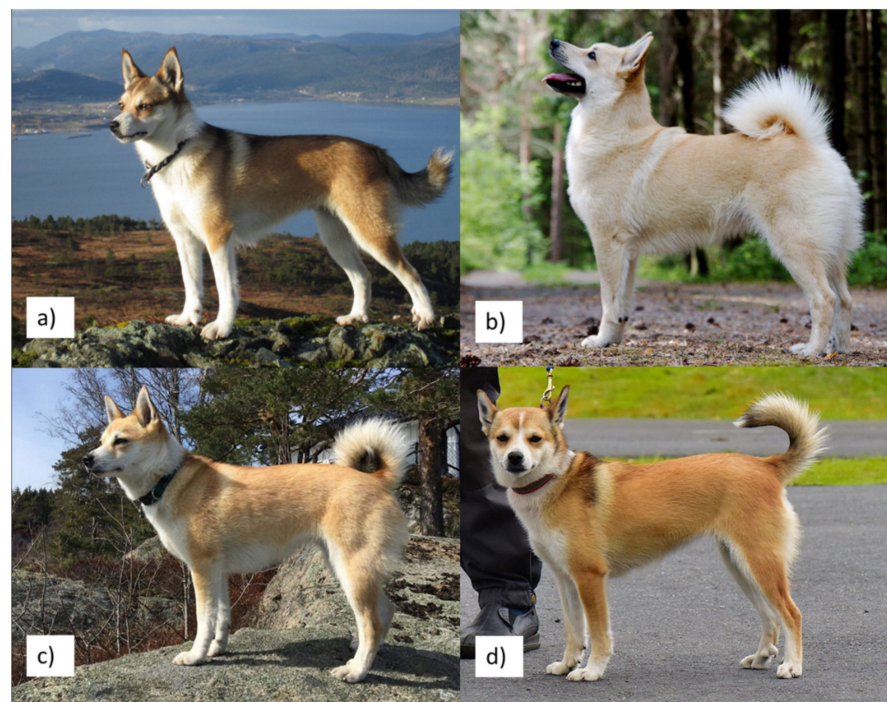


Figure 1. Dog breeds used in the outbreeding project and their descendants. (a): Norwegian Lundehund; (b): Norwegian Buhund; (c): F1 first-generation crossing of Lundehund \times Buhund; (d): F2 second-generation crossing of F1 \times Lundehund. All individuals are females. (a): Photo by Dagrunn Mæhlen, (b): photo by Ina Margrethe Gabrielsen Egren, (c): photo by Cathrine Brekke, (d): photo by Arild Espelien.

1.4. Aim of the Investigation

In this study, we investigated four groups of dogs, namely, Lundehund, Buhund and first- (F1) and second- (F2) generation Lundehund \times Buhund crosses generated by the rescue project (Figure 1), to compare genetic diversity in the four groups. Although few outcrossed individuals are available for investigation so far, these dogs and, hence, their genetic profiles are vital for the rescue program. To allow comparison, the four groups were made of a similar sample size, where the F1 group had the fewest individuals due to the constraints described above. We predicted that the F2 dogs would show genome-wide diversity levels that were higher than those of Lundehund individuals but lower than those

of the F1 and Buhund dogs. We assessed the four groups of dogs by combining genomic analyses of SNP profiles and data simulations.

2. Materials and Methods

2.1. Samples

Due to the non-invasive nature of DNA sampling (by buccal swabs), it was not necessary to apply for ethical approval of animal procedures to the Norwegian Animal Research Authority. In all cases, the collection of samples from individual dogs was approved by the dog owner. The following four dog groups were included in the study: Lundehund ($n = 12$), Buhund ($n = 12$), first-generation crosses Lundehund \times Buhund (F1, $n = 7$) and first-generation backcrosses F1 \times Lundehund (F2, $n = 12$). For an overview of the relatedness among individuals, see Appendix A. All dogs were DNA sampled with non-invasive buccal swabs, and the DNA was extracted with the Isohelix DDK-50 isolation kit. This sampling method is widely used and has been demonstrated to provide DNA of good quality, suitable for SNP studies [26]. The samples were genotyped with the Canine HD Bead Chip (Illumina) with 172,115 SNPs, and their quality was screened in GenomeStudio (Illumina) according to the program guidelines (http://www.illumina.com/Documents/products/technotes/technote_infinium_genotyping_data_analysis.pdf accessed on 10 January 2022). We screened individual profiles in PLINK v.1.90 [27] (<https://www.cog-genomics.org/plink/1.9/> accessed on 10 January 2022) and retained dogs with individual and per-SNP call rates of $>90\%$, resulting in 111,542 autosomal SNPs (genotyping rate > 0.99) for a total of 41 dogs. The profiles of two F2 dogs did not pass the screening process and were removed, resulting in $n = 12$ (6 females, 6 males) Lundehund, $n = 12$ (6 females, 6 males) Buhund, $n = 7$ (5 females, 2 males) F1 individuals and $n = 10$ (5 females, 5 males) F2 individuals. Next, we pruned the data for loci in linkage disequilibrium (LD), with a window size of 50 SNPs, a sliding window of 5 loci and a variance inflation factor threshold of 2 (PLINK command `-indep 50 5 2`), resulting in 8182 SNPs (henceforth the 8K dataset). Because the conservative LD pruning substantially reduced the number of SNP loci, we also performed a second, less stringent pruning that would retain more loci for assessment of runs of homozygosity (ROHs). The second dataset was obtained by filtering as described above but with pairwise genotype associations (r^2) > 0.9 (`-indep-pairwise 50 5 0.9` in PLINK), which retained 34,725 loci (henceforth 34K dataset).

2.2. Statistical Analyses

Genetic variability in each population was assessed by the calculation of observed heterozygosity (H_o); unbiased expected heterozygosity (uHE), an unbiased estimator of genetic diversity; the inbreeding coefficient (FIS); and the mean percentage of polymorphic loci (P) in GenAEx 6.501 [28] (definitions and formulae are provided in Appendix A of the software manual). For H_o , the skewness (a measure of the symmetry of a distribution), kurtosis (a measure of whether the data are heavy tailed or light tailed relative to a normal distribution), medians and 25% and 75% percentiles were calculated for every dog group. Because inbreeding will reduce heterozygosity and result in a skewed distribution with few loci showing high heterozygosity (a distribution with a long tail), this will produce high kurtosis (a peaked distribution). Because measures that assume a normal distribution in the data may perform less well when this condition is not met, it is relevant to monitor skewness and kurtosis [29,30], and these parameters can provide important information for the temporal analyses of genetic diversity.

The cumulative curves (representing the cumulative frequency distribution) for the H_o and uHE for every dog group were plotted for all the 8182 loci investigated, and the cumulative curves were compared among the groups.

We next investigated deviations from Hardy–Weinberg equilibrium (HWE) within each dog group with a statistical test in GENEPOP v4.3 [31].

Pairwise F_{ST} values were calculated for all combinations of dog groups to determine the degree of genetic differentiation using GenAIEx, and the Fisher's exact probability test for genic differentiation was carried out using GENEPOP. We examined ROHs per group with the 34K dataset in PLINK (–homozyg–homozyg-group) with default parameter settings, and because of the small sample size, we included ROHs found in two or more individuals. We then plotted the results per autosomal chromosome for each of the four groups to visualize the differences among groups and among chromosomes.

3. Results

We first sought to validate the SNP data against the previous estimates of extremely low genetic diversity for the Lundehund and higher diversity for the Buhund. The mean H_o values for the four groups varied from 0.043 (Lundehund) to 0.272 (F1) (Table 1). The median H_o values were equal to zero for the Lundehund and the F2, indicating that more than 50% of the loci investigated were homozygotic, whereas the F1 and the Buhund showed a median value different from zero, indicating that more than 50% of the loci investigated were heterozygotes.

Table 1. Summary of the observed heterozygosity (H_o) (estimated from 8184 linkage-disequilibrium-pruned loci) from each of the 4 dog groups: Lundehund (LUN), Buhund (BUH), first-generation crosses LUN \times BUH (F1) and first-generation backcrosses F1 \times Lundehund (F2). The number of individuals sampled in each group (n), the mean H_o , the standard error of the mean (S.E.), the median H_o , the 25% and 75% percentiles, the skewness and the kurtosis of the H_o distributions are shown.

	LUN H_o	BUH H_o	F1 H_o	F2 H_o
n	12	12	7	10
Mean	0.043	0.269	0.272	0.153
S.E.	0.001	0.002	0.004	0.002
Median	0	0.273	0.167	0
25%	0	0.091	0	0
75%	0	0.455	0.5	0.25
Skewness	3.456	0.534	0.956	1.402
Kurtosis	−4009.148	−659.838	−680.202	−1108.418

Only the Buhund showed a 25% percentile different from zero, illustrating that less than 25% of the loci were homozygotic in the Buhund. In contrast, only the Lundehund showed a 75% percentile equal to zero, indicating that more than 75% of the loci investigated were homozygotic in the Lundehund (Table 1).

The skewness values were all positive, ranging from 0.534 (Buhund) to 3.456 (Lundehund), whereas the kurtosis ranged from −4009.148 (Lundehund) to 680.202 (F1) (Table 1). The cumulative distribution curves of the heterozygosity for the 8182 variable loci showed clear differences among the different groups, with the Buhund showing the highest heterozygosity (as shown by the number of homozygous loci and by the curve, which exhibits the most gentle slope among the four groups). The Lundehund instead showed the lowest heterozygosity, and the F1 and F2 crosses showed intermediate values. It is noteworthy that, of the 8182 loci, the Buhund had less than 1000 homozygous loci, whereas the Lundehund had more than 7000 homozygous loci (Figure 2a,b).

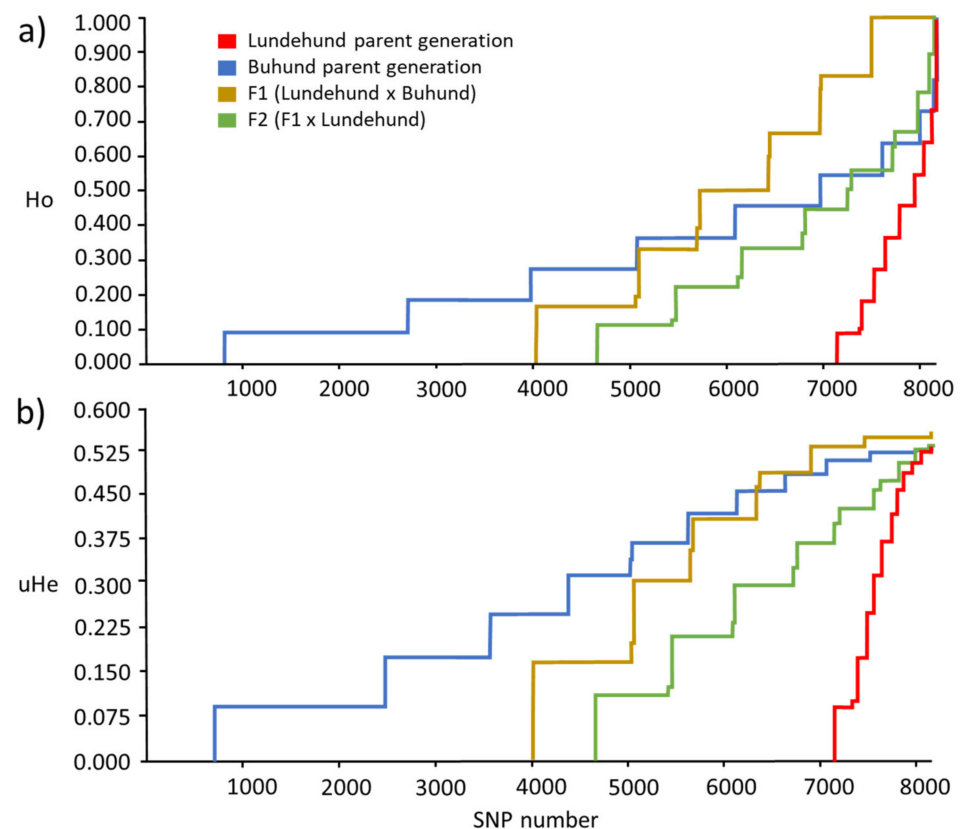


Figure 2. Cumulative curves of the observed heterozygosity (H_o) (a) and unbiased expected heterozygosity (uH_E) (b) estimated from 8184 loci of the 4 dog groups: Lundehund, Buhund, first-generation crosses F1 (Lundehund \times Buhund) and first-generation backcrosses F2 (F1 \times Lundehund). The lines show a decline in the number of loci with a certain range of H_o and uH_E (the lengths of the horizontal lines) per generation. In the parental generation, the Buhund has the longest horizontal lines followed by the F1 generation, the F2 generation and, finally, the Lundehund.

Genetic variability parameters, including unbiased heterozygosity (uH_E), inbreeding coefficient (F_{IS}) and the mean percentage of polymorphic loci (P), are listed in Table 2.

Table 2. Indices of genetic diversity per group: Lundehund (LUN), Buhund (BUH), first-generation crosses LUN \times BUH (F1) and first-generation backcrosses F1 \times LUN (F2). The table presents the unbiased expected heterozygosity (uH_E) and inbreeding coefficient (F_{IS}) and their respective standard errors, the Hardy–Weinberg test (HWE) and the mean percentage of polymorphic loci (P).

Group	$uH_E \pm SE$	$F_{IS} \pm SE$	HWE Test	P
LUN	0.041 ± 0.001	-0.083 ± 0.003	***	12.74%
BUH	0.267 ± 0.002	-0.051 ± 0.003	*	90.96%
F1	0.195 ± 0.002	-0.420 ± 0.004	***	50.89%
F2	0.127 ± 0.002	-0.216 ± 0.002	***	42.93%

*** $p < 0.001$, * $p < 0.05$.

Deviations from HWE were found to be highly significant ($p < 0.001$) for the F1, F2 and Lundehund and significant ($p < 0.05$) for the Buhund. All the deviations were due to heterozygote excess as can be seen by the negative F_{IS} values ranging from -0.420 (F1) to -0.051 (Buhund) (Table 2). The P ranged from 12.74% (Lundehund) to 90.96% (Buhund) (Table 2).

All the pairwise F_{ST} comparisons were highly statistically significant ($p < 0.001$), with values ranging from 0.055 (F1–F2 comparison) to 0.424 (Lundehund–Buhund comparison) (Table 3).

Table 3. Pairwise F_{ST} values (upper diagonal) of the four dog groups: Lundehund (LUN), Buhund (BUH), first-generation crosses LUN \times BUH (F1) and first-generation backcrosses F1 \times LUN (F2). All F_{ST} comparisons were highly statistically significant ($p < 0.001$).

	BUH	F1	F2
LUN	0.424	0.319	0.134
BUH		0.1241	0.252
F1			0.319

Runs of homozygosity (ROHs) indicate regions of the chromosome where a single genotype is contiguous. The ROH plot for the four dog groups showed, as expected, that the Lundehund had the highest number of ROHs, whereas no ROH was found in the first generation of crosses (F1) (Figure 3). Moreover, ROHs re-emerged in the next-generation F2, where they were more frequent and longer than those in the Buhund. The ROHs in the Lundehund included some long segments on chromosomes 9, 26 and 38 (Figure 3), and the number of ROHs per dog group was 247 for the Lundehund, 88 for the Buhund, none for the F1 and 116 for the F2.

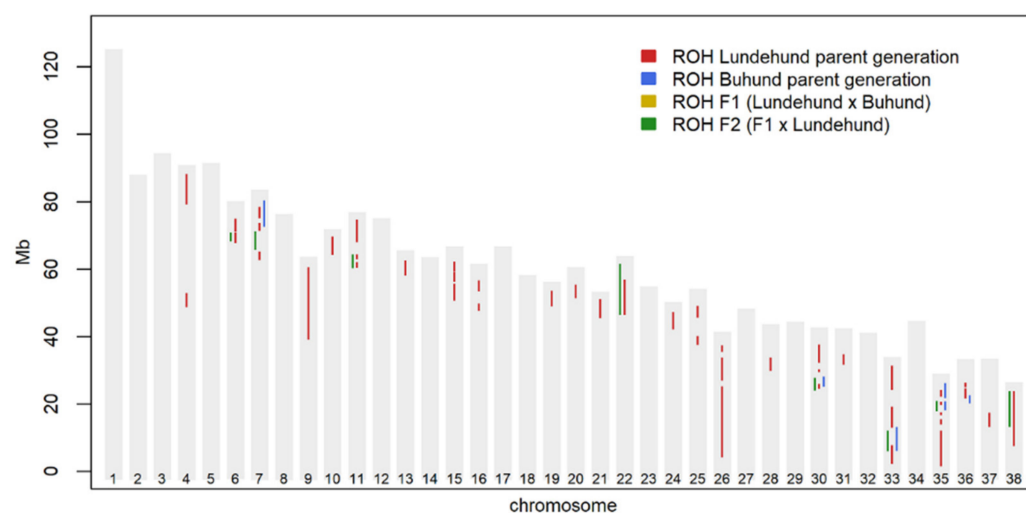


Figure 3. Plots of runs of homozygosity (ROHs) per breed and per chromosome, showing ROHs shared by two or more individuals and based on 34K SNP loci. ROHs were relatively frequent in the Lundehund, and some were also detected in the Buhund, whereas none were observed in the F1 generation. Although we did not sample all the Lundehund individuals involved in the rescue project, the results show that the process has provided, at least temporarily, an increase in genetic diversity.

4. Discussion

Our analysis suggests that the initial part of the Lundehund genetic rescue project has been successful, although further work remains to be carried out until outcrossed individuals can be officially included in the studbook of the Lundehund breed. In the F1 dogs, we observed a clear increase in unbiased heterozygosity (uH_E) and the mean percentage of polymorphic loci (P) (Table 2). In the F2 generation, where the F1 dogs were backcrossed with Lundehund dogs, we observed the expected reduction in uH_E and P compared to the F1s. These results illustrate the genetic rescue effect, as the uH_E and P are higher in the F2 generation than in the parental Lundehund generation.

The cumulative heterozygosity plots quantify the increase in the number of heterozygous loci, which even reaches levels of uH_E and H_o that are higher than those of the Buhund generation (see Figure 2a,b), where the Lundehund genotype has enriched diversity over the Buhund in certain chromosomal regions. Additionally, the changes in the skewness and kurtosis of the genetic parameters reflect marked changes in the genomes across the generations. For example, the Lundehund's strong positive H_o skewness (3.456)

reflects an extremely depauperate genome with mostly homozygous loci. There are very few heterozygote loci in the tail of the distribution, i.e., with very low frequency, which illustrate the risk of an allele being lost, where the risk is inversely proportional to the allele's frequency. Hence, several loci in the Lundehund are at risk of becoming fixed in a few generations.

Outcrossing with the Buhund considerably reduced the skewness in the F1 relative to that of the Lundehund (Table 1), although the value for the F1 was higher than that of the Buhund. It is noteworthy that if, instead of the median, we had used only the mean H_o for monitoring the changes in H_o across generations, we would have observed a minimal change in the F1 compared to the Buhund (Table 1). This discrepancy is a consequence of the skewed distributions of the H_o . A higher skewness reflects an increase in the number of heterozygote loci, thus reducing the number of loci at risk of becoming fixed, which was the main reason for initiating the genetic rescue project. The highly skewed distributions of the genetic parameters also suggest that their medians are highly informative and complementary to the mean values. The use of mean values could otherwise be misleading, as these only provide estimates for the central value of a distribution if the distribution is symmetrical around the mean. For skewed distributions, the median is therefore a better descriptor of a distribution's central value [29,30].

In the F2 generation, the skewness increased relative to that of the F1 generation (1.402 versus 0.956), because many loci that were heterozygotes in the F1 became homozygotes when backcrossing with Lundehund dogs to create the F2. If we had used the mean H_o to compare the F2 and F1, we would have observed a reduction of $0.272 - 0.153 = 0.119$, which is equivalent to a reduction of 43.75%, but the medians show a more dramatic scenario with more than 50% of homozygous loci. However, there are fewer homozygous loci in the F2 compared to the Lundehund, even if the 75% upper quantile in the F2 was reduced compared to the F1 (Table 1). The kurtosis values were not very informative in this investigation, as their values were strongly influenced by the strong asymmetry of the distributions of the H_o values.

Although genetic rescue efforts have provided successful results for various species and populations [1], additional gene flow may be needed to ensure persistence over the long term [5,32]. Despite uH_E , P and F_{IS} being increased in the F2, we can clearly see that backcrossing the F1 with the Lundehund reduced the genetic distance between the F2 and the parental Lundehund ($F_{ST} = 0.134$) compared to the distance between the F1 and the parental Lundehund ($F_{ST} = 0.319$). A future backcross of the F2 with the Lundehund could further reduce the genetic distance between the next generation (F3) and the parental population and result in an additional loss of genetic variability.

The ROH results reflect the genetic rescue effect by illustrating the differences between the Lundehund genome and that of the other groups. However, the immediate backcrossing with the F1 and the Lundehund to form the F2 resulted in the rapid re-emergence of several ROH segments. This also raises the question of whether additional crossing between F2 individuals or the possible crossing of F2 individuals from different types of crossings (Lundehund \times Buhund, Lundehund \times Icelandic sheepdog and Lundehund \times Norrbottenspets) could present alternative scenarios for preserving genetic diversity and reducing homozygosity in future generations.

5. Conclusions

This study clearly documents the beneficial genetic effect of outcrossing a highly inbred dog population. It also documents that backcrossing the F1 generation to the parental population results in a loss of some of the desired heterozygosity achieved in the initial outcross. To preserve the characteristics of the Lundehund, the F2 dogs were made by crossing the F1 with the Lundehund and not with other F2 dogs from different lineages. While subsequent backcross of the F1 with the Buhund would have produced an F2 generation with higher levels of heterozygosity than those achieved by the F1 \times Lundehund cross, our study quantifies the effect that the immediate backcross strategy

had on the genetic diversity of the F2 dogs. Thus, stakeholders in the program and in future genetic rescue projects can use this data in combination with health data for the F1 and F2 animals to evaluate the effectiveness of the genetic rescue program so far. Our results indicate that additional crossbreeding would extend and augment the genetic rescue process. These include crossing among F2 dogs from the three different breeds involved in the outcrossing project (Buhund, Norrbottenspets and Icelandic sheepdog) to further increase and maintain genetic diversity. A careful evaluation of the resulting phenotypes, particularly with respect to LS [15–19], could help identify the genes involved in the disease and, thus, allow selection of the desired variants for the breeding program.

Author Contributions: Conceptualization, A.V.S. and C.M.; formal analysis, A.V.S. and C.P.; data collection, C.M.; writing—original draft preparation, A.V.S., C.M. and C.P.; writing—review and editing, A.V.S., C.B., C.M., C.P., G.Q. and W.B.L.; project administration, C.M.; funding acquisition, C.M., G.Q. and W.B.L. All authors have read and agreed to the published version of the manuscript.

Funding: This research was funded by a Peder Sather Center for Advanced Study Grant Award to G.Q. and the Norwegian Agriculture Agency (grant Agros 1135359). W.B.L. was supported by NIH grant DP5OD017851 and the Carnegie Institution for Science endowment. C.P. was funded by the Aalborg Zoo Conservation Foundation (AZCF).

Institutional Review Board Statement: Ethical review and approval were waived for this study due to the non-invasive nature of sampling by means of buccal swabs. In all cases, the collection of samples from individual dogs was approved by the dog owner.

Data Availability Statement: The data presented in this study are available on request from the corresponding author. The data are not publicly available because they are part of an ongoing study.

Acknowledgments: We would like to thank all the owners who participated in the study by providing dog DNA samples, members from the Norwegian Lundehund Club who helped with data collection, H. Gautun and I.S. Espelien for reading the draft, H. Jensen for lending the DNA extraction lab and E. Salmela for help with data analyses.

Conflicts of Interest: The authors declare no conflict of interest.

Appendix A

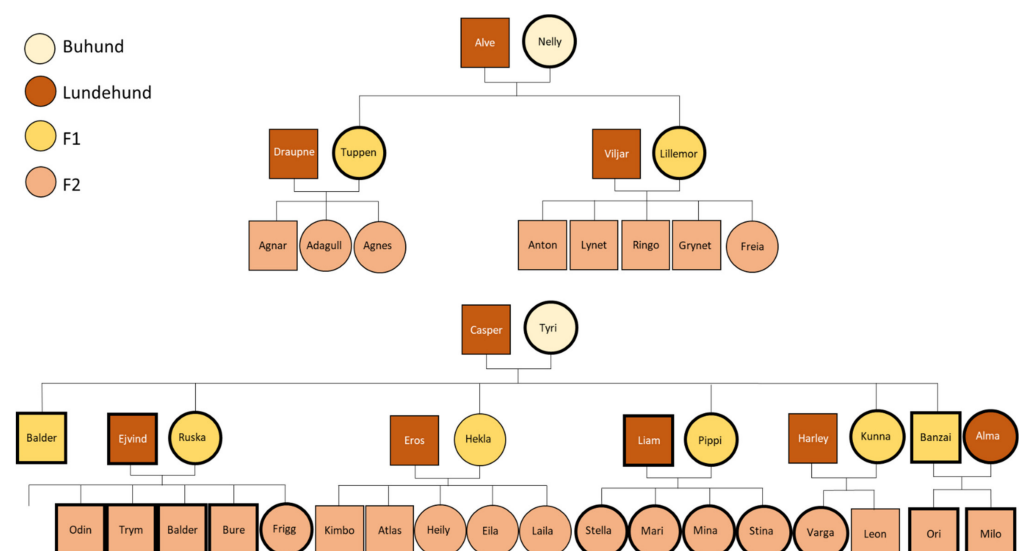


Figure A1. Family trees showing the first two outcrosses of the Lundehund with the Buhund, followed by backcrosses with the Lundehund. Female individuals are represented by circles, and male individuals are represented by squares. The individuals included in these analyses are marked with a thicker outline. The Lundehund and Buhund individuals included in the breeding project were unrelated by pedigree for at least three generations.

References

1. Frankham, R. Genetic rescue of small inbred populations: Meta-analysis reveals large and consistent benefits of gene flow. *Mol. Ecol.* **2015**, *24*, 2610–2618. [CrossRef] [PubMed]
2. Johnson, W.E.; Onorato, D.P.; Roelke, M.E.; Land, E.D.; Cunningham, M.; Belden, R.C.; McBride, R.; Jansen, D.; Lotz, M.; Shindle, D.; et al. Genetic Restoration of the Florida Panther. *Science* **2010**, *329*, 1641–1645. [CrossRef] [PubMed]
3. Hogg, J.T.; Forbes, S.H.; Steele, B.M.; Luikart, G. Genetic rescue of an insular population of large mammals. *Proc. R. Soc. B Biol. Sci.* **2006**, *273*, 1491–1499. [CrossRef] [PubMed]
4. Åkesson, M.; Liberg, O.; Sand, H.; Wabakken, P.; Bensch, S.; Flagstad, Ø. Genetic rescue in a severely inbred wolf population. *Mol. Ecol.* **2016**, *25*, 4745–4756. [CrossRef]
5. Robinson, Z.L.; Bell, D.A.; Dhendup, T.; Luikart, G.; Whiteley, A.R.; Kardos, M. Evaluating the outcomes of genetic rescue attempts. *Conserv. Biol.* **2021**, *35*, 666–677. [CrossRef]
6. Edmands, S. Between a rock and a hard place: Evaluating the relative risks of inbreeding and outbreeding for conservation and management. *Mol. Ecol.* **2007**, *16*, 463–475. [CrossRef]
7. Windig, J.J.; Doekes, H.P. Limits to genetic rescue by outcross in pedigree dogs. *J. Anim. Breed. Genet.* **2018**, *135*, 238–248. [CrossRef]
8. Ralls, K.; Sunnucks, P.; Lacy, R.C.; Frankham, R. Genetic rescue: A critique of the evidence supports maximizing genetic diversity rather than minimizing the introduction of putatively harmful genetic variation. *Biol. Conserv.* **2020**, *251*, 108784. [CrossRef]
9. Powell, D. The Dalmatian/Pointer Backcross Project: Overcoming 20th Century Attitude about Crossbreeding. Available online: <https://www.vin.com/apputil/content/defaultadv1.aspx?pId=11340&catId=34514&id=5101841> (accessed on 4 January 2021).
10. Cattanaach, B.M. Genetics Can Be Fun. Available online: <http://www.steynmere.co.uk/ARTICLES1.html> (accessed on 4 January 2021).
11. Irish Kennel Club. International Outcross Programme Irish Red and White Setters and Irish Red Setters. Available online: <http://www.ikc.ie/international-outcross-programme-irish-red-and-white-setters-and-irish-red-setters> (accessed on 5 January 2021).
12. Melis, C.; Borg, A.A.; Espelien, I.S.; Jensen, H. Low neutral genetic variability in a specialist puffin hunter: The Norwegian Lundehund. *Anim. Genet.* **2013**, *44*, 348–351. [CrossRef]
13. Espelien, I.S. *Lundehundboka [The Lundehund Book]*; Espelien, I.S., Ed.; Forlaget Vigmostad & Bjørke AS: Bergen, Norway, 2012. (In Norwegian)
14. Pfahler, S.; Distl, O. A massive reduction of the genetic diversity in the Lundehund. *Anim. Genet.* **2014**, *45*, 154. [CrossRef]
15. Kropatsch, R.; Melis, C.; Stronen, A.V.; Jensen, H.; Epplen, J.T. Molecular Genetics of Sex Identification, Breed Ancestry and Polydactyly in the Norwegian Lundehund Breed. *J. Hered.* **2015**, *106*, 403–406. [CrossRef]
16. Kettunen, A.; Daverdin, M.; Helfjord, T.; Berg, P. Cross-Breeding Is Inevitable to Conserve the Highly Inbred Population of Puffin Hunter: The Norwegian Lundehund. *PLoS ONE* **2017**, *12*, e0170039.
17. Pfahler, S.; Distl, O. Effective Population Size, Extended Linkage Disequilibrium and Signatures of Selection in the Rare Dog Breed Lundehund. *PLoS ONE* **2015**, *10*, e0122680. [CrossRef]
18. Qvigstad, G.; Kolbjørnsen, O.; Skancke, E.; Waldum, H.L. Gastric Neuroendocrine Carcinoma Associated with Atrophic Gastritis in the Norwegian Lundehund. *J. Comp. Pathol.* **2008**, *139*, 194–201. [CrossRef]
19. Kolbjørnsen, O.; Press, C.M.; Landsverk, T. Gastropathies in the Lundehund 1. Gastritis and Gastric Neoplasia Associated with Intestinal Lymphangiectasia. *Apmis* **1994**, *102*, 647–661. [CrossRef]
20. Kolbjørnsen, O.; Press, C.M.; Landsverk, T. Gastropathies in the Lundehund 2. A Study of Mucin Profiles. *Apmis* **1994**, *102*, 801–809. [CrossRef]
21. Metzger, J.; Pfahler, S.; Distl, O. Variant detection and runs of homozygosity in next generation sequencing data elucidate the genetic background of Lundehund syndrome. *BMC Genom.* **2016**, *17*, 535. [CrossRef]
22. Norwegian Lundehund Club. *Rasespesifikk Avlsstrategi (RAS) for Norsk Lundehund [Breed Specific Breeding Strategy for Norwegian Lundehund]*; Norwegian Lundehund Club: Oslo, Norway, 2014; p. 28. (In Norwegian)
23. Stronen, A.V.; Salmela, E.; Baldursdottir, B.K.; Berg, P.; Espelien, I.S.; Jarvi, K.; Jensen, H.; Kristensen, T.N.; Melis, C.; Manenti, T.; et al. Genetic rescue of an endangered domestic animal through outcrossing with closely related breeds: A case study of the Norwegian Lundehund. *PLoS ONE* **2017**, *12*, e0177429. [CrossRef]
24. Espelien, I.S.; Gautun, H.; Helfjord, T. The new breeding strategy of the Norwegian Lundehund Club. *Lundehund-Nytt* **2013**, *2*, 51–61.
25. Norwegian Lundehund Club. Database of the Norwegian Lundehund. Available online: <https://natron.vm.ntnu.no/nlk/> (accessed on 4 January 2021).
26. Chang, M.L.; Terrill, R.L.; Bautista, M.M.; Carlson, E.J.; Dyer, D.J.; Overall, K.L.; Hamilton, S.P. Large-Scale SNP Genotyping with Canine Buccal Swab DNA. *J. Hered.* **2007**, *98*, 428–437. [CrossRef]
27. Purcell, S.; Neale, B.; Todd-Brown, K.; Thomas, L.; Ferreira, M.A.R.; Bender, D.; Maller, J.; Sklar, P.; de Bakker, P.I.W.; Daly, M.J.; et al. PLINK: A tool set for whole-genome association and population-based linkage analyses. *Am. J. Hum. Genet.* **2007**, *81*, 559–575. [CrossRef]
28. Peakall, R.; Smouse, P.E. GenA1Ex 6.5: Genetic analysis in Excel. Population genetic software for teaching and research—an update. *Bioinformatics* **2012**, *28*, 2537–2539. [CrossRef]
29. Joanes, D.N.; Gill, C.A. Comparing measures of sample skewness and kurtosis. *J. R. Stat. Soc. Ser. D* **1998**, *47*, 183–189. [CrossRef]

-
30. Legendre, P.; Legendre, L. *Numerical Ecology*, 2nd ed.; Elsevier: Amsterdam, The Netherlands, 1998.
 31. Rousset, F. GENEPOP' 007: A complete re-implementation of the GENEPOP software for Windows and Linux. *Mol. Ecol. Resour.* **2008**, *8*, 103–106. [[CrossRef](#)]
 32. Hervey, S.D.; Rutledge, L.Y.; Patterson, B.R.; Romanski, M.C.; Vucetich, J.A.; Belant, J.L.; Beyer, D.E.; Moore, S.A.; Brzeski, K.E. A first genetic assessment of the newly introduced Isle Royale gray wolves (*Canis lupus*). *Conserv. Genet.* **2021**, *22*, 913–926. [[CrossRef](#)]