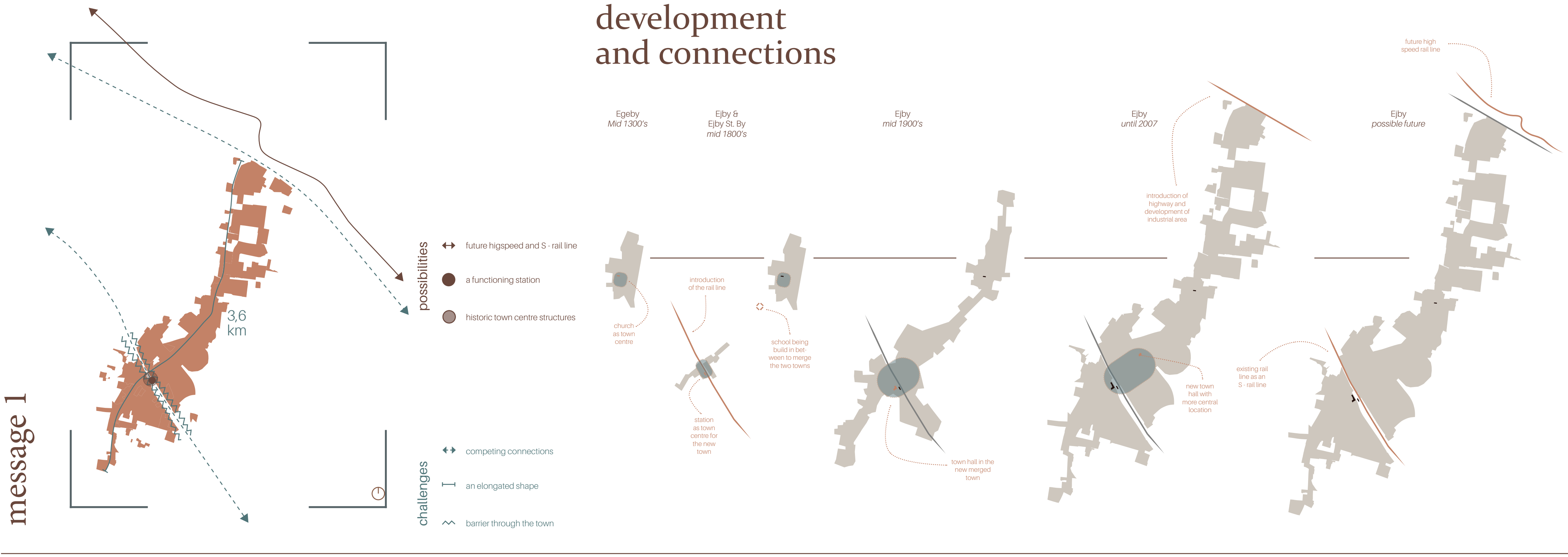
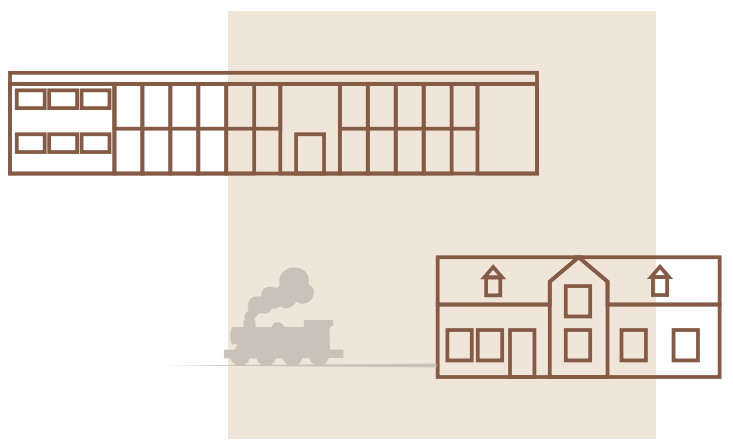


message 1



more than a station

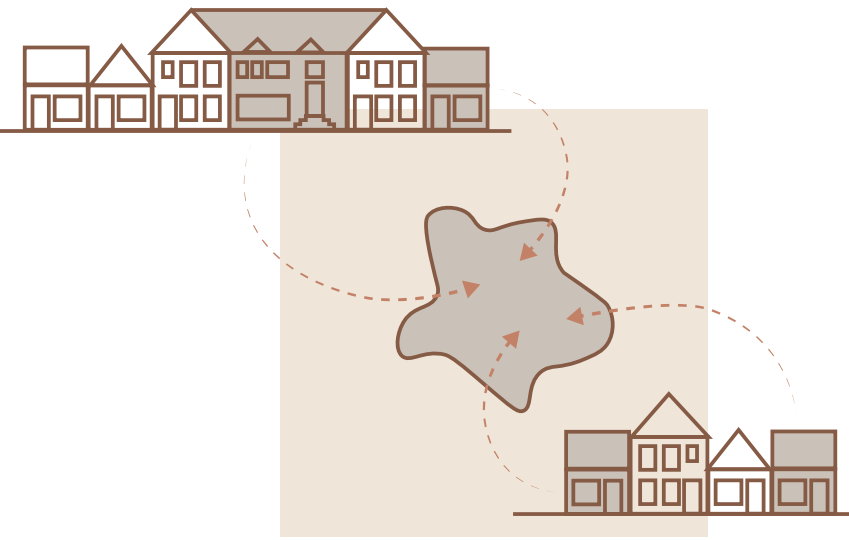
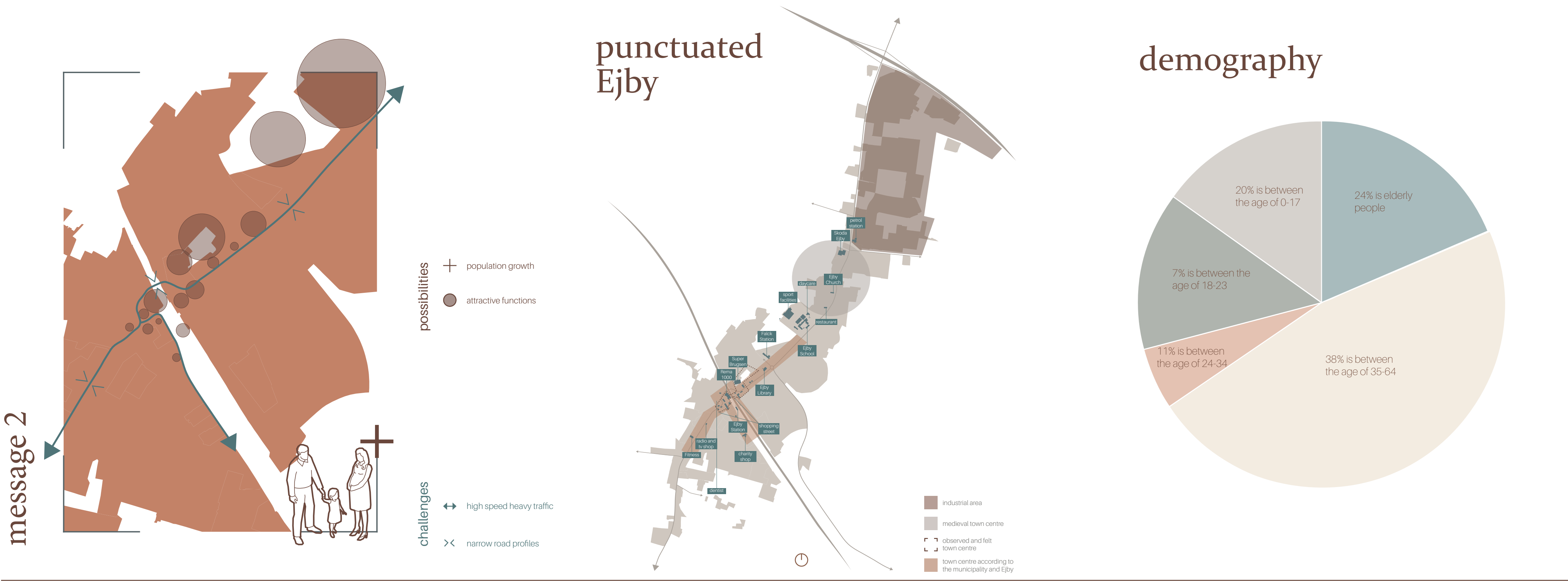
a new sense of self for Ejby



HISTORY should be enhanced

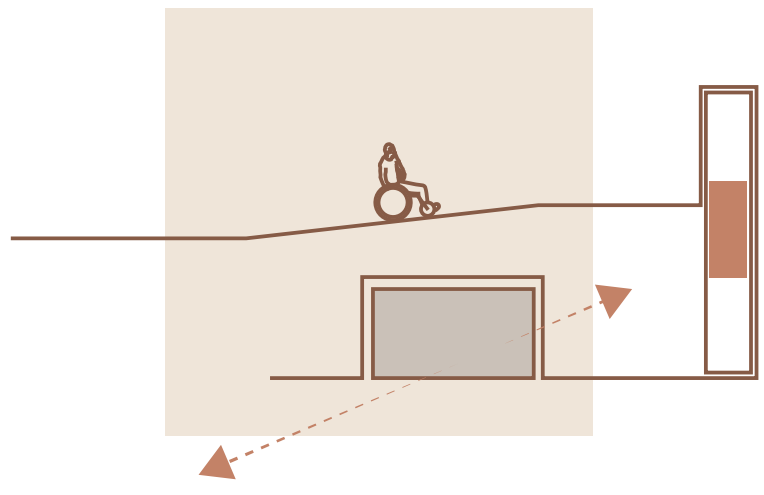
- Re-establish a feel of town centre between the historic buildings.
- Using the buildings for public hub-supporting functions to accommodate their significant location.

message 2



CENTRALISATION of existing and future town centre functions

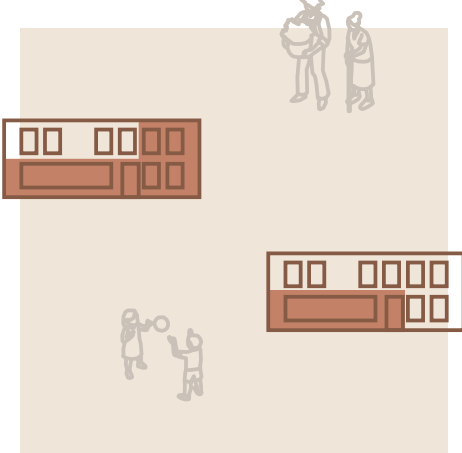
- Put behind the idea of shopping streets and establish a catalyst of a supporting town centre for well established and future public functions.
- Make space for central residential areas to give life to the main streets in proximity of the new hub.



CONNECTIVITY & ACCESSIBILITY

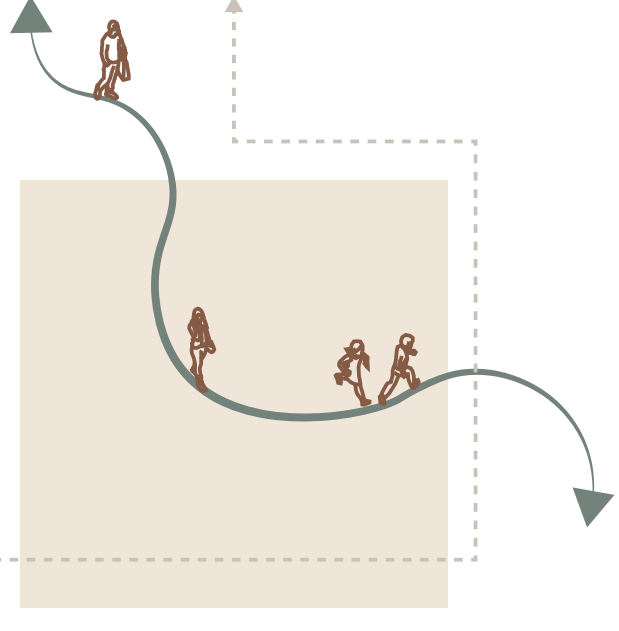
- Opening the tunnel and platforms to integrate the areas to the public pedestrian areas on both sides.
- Create access for disabled people.

message 3



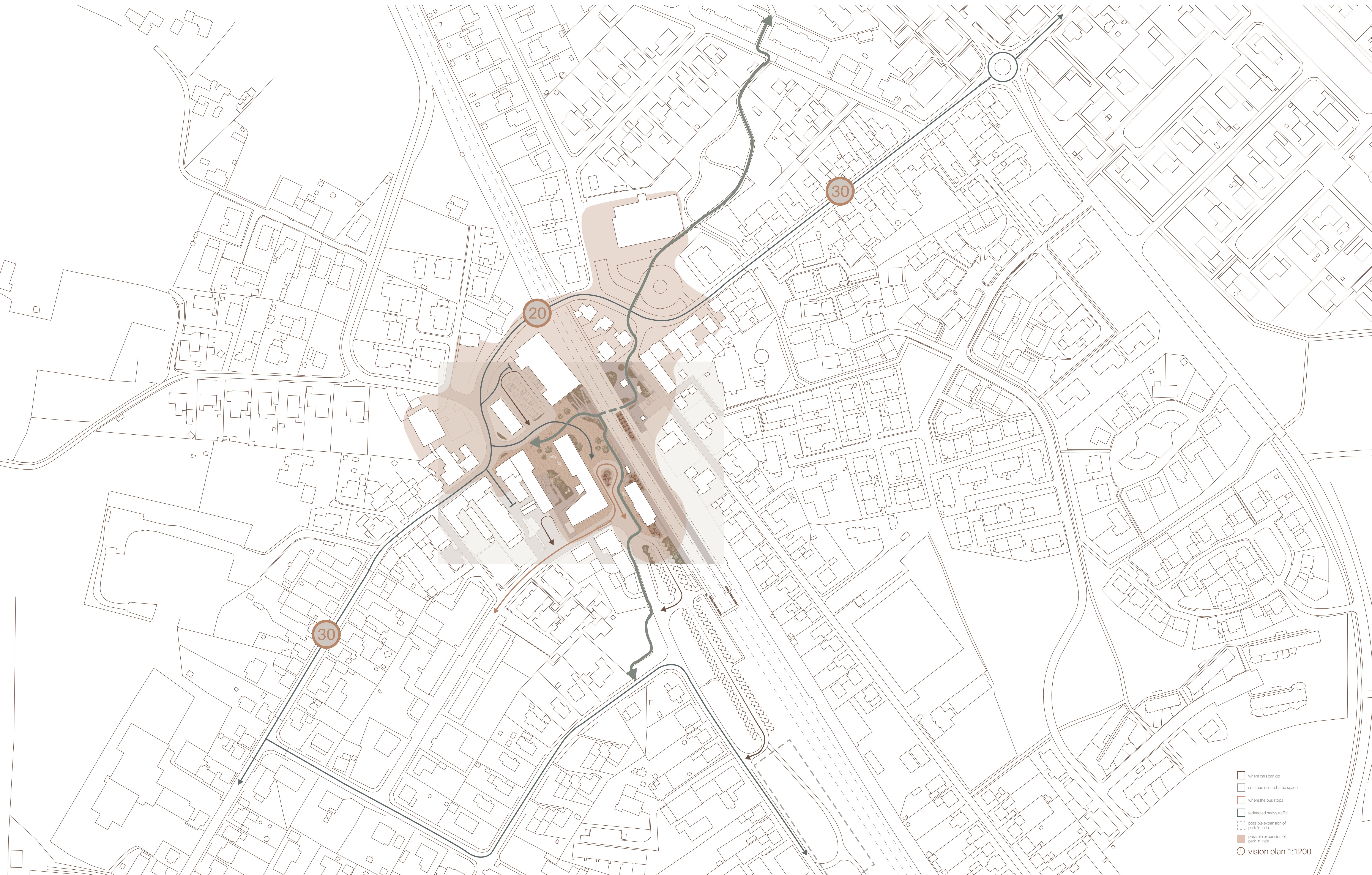
MIXED USE of functions and users

- Ensure as many people as possible out of the potential users by incorporating different functions already used by people from and going to the town.
- Ensure active functions at different times of the day and night to provide a feel of safety.

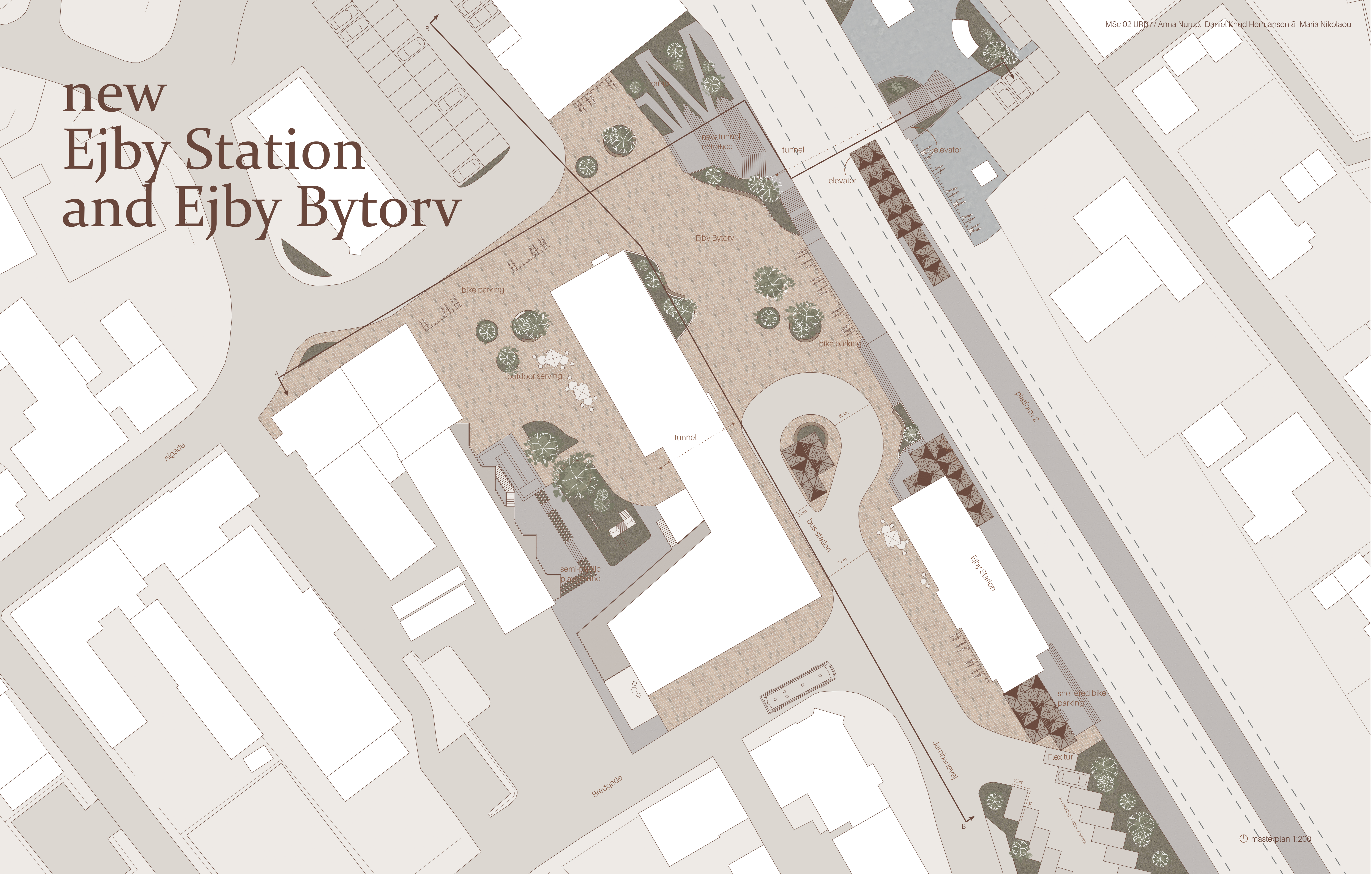


STRUCTURES should be continued and changed

- Redirect heavy traffic and prioritize public transportation and soft road users over private cars.
- Continue the zones and paths of the soft road users established in the northern part of the town.



new Ejby Station and Ejby Bytorv



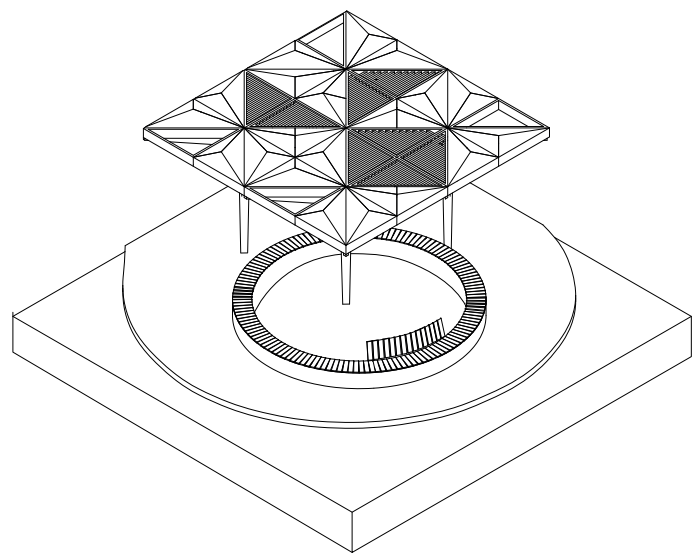
a new sense of self...

This project aims to create a stronger connection throughout the town of Ejby, by creating a new punctuated town centre at the old historic centre. Throughout the past centuries the feel of town centre has shifted in Ejby, meaning that different areas over the past decades has been neglected. This project aims to change this course, by an urban renewal plan, in close proximity to the old historic town centre and in relation to the mobility hub at Ejby Station. This has been done by creating a new town square named

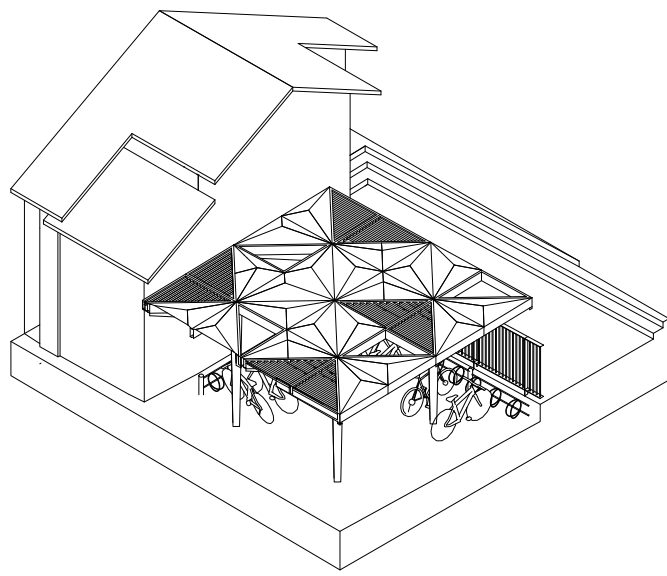
Ejby Bytorv. This new square will be the focal point around different events and different facilities. Therefore the plan also includes a vision of changing the existing town centre structure as it is outdated. This is visualized on the vision plan. By creating different zones within the new square it appeals to different user groups and can be used during different times of the day. As a key element the yellow paving that is common in Ejby has been reused as a characteristic element in the town scape, as an indicator of public space.

Through a redesign of the tunnel entrances, it has been possible to make the more accessible for all types of users, including disabled, people with strollers or bicycles. This is an important measure to ensure the connectivity from the recent renewed areas to the new Bytorv creating a much more coherent path between the two areas of the town. This was one of the most common wishes from the citizen involvement that was made in Ejby during this project.

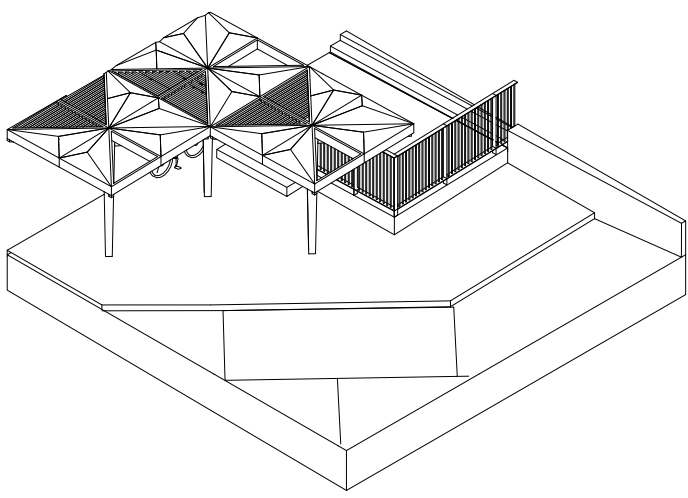
waiting for the bus



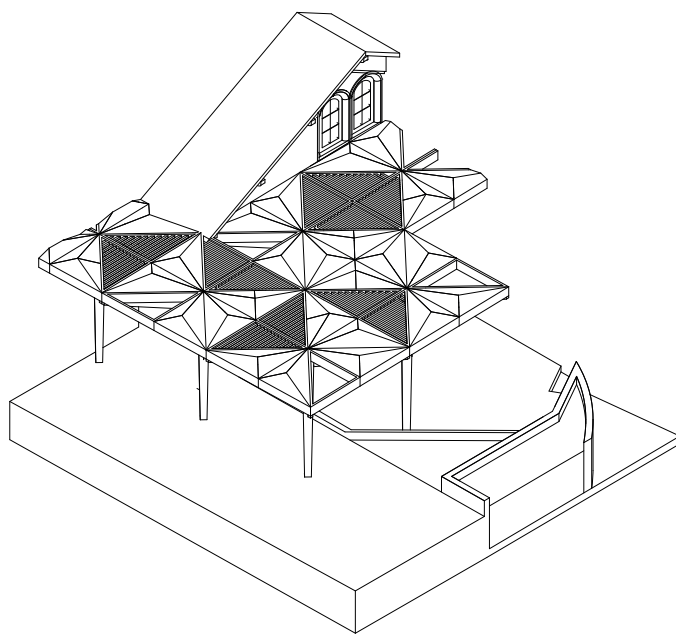
bike parking



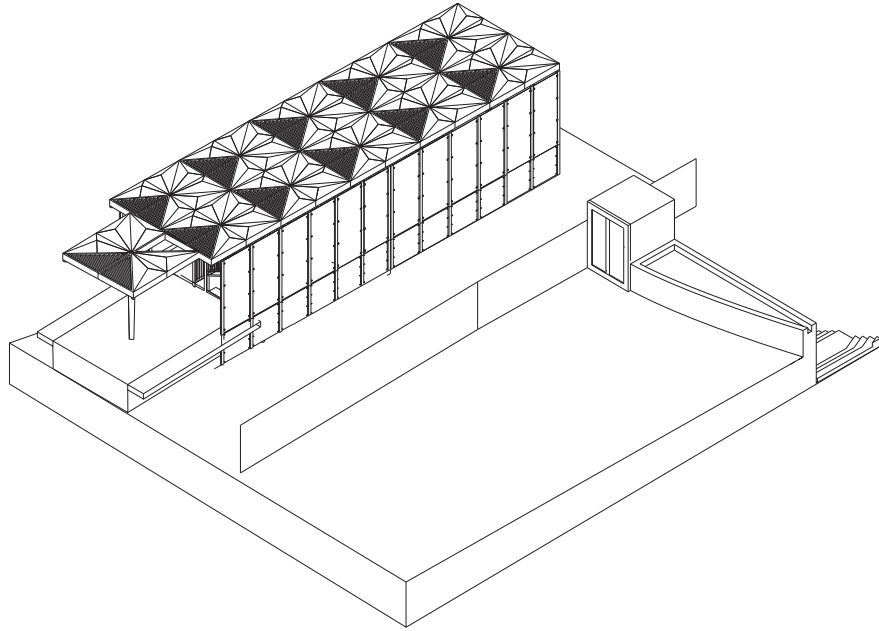
waiting for Flextur



waiting for the train



new shelter and elevators on the northern side and platform 2

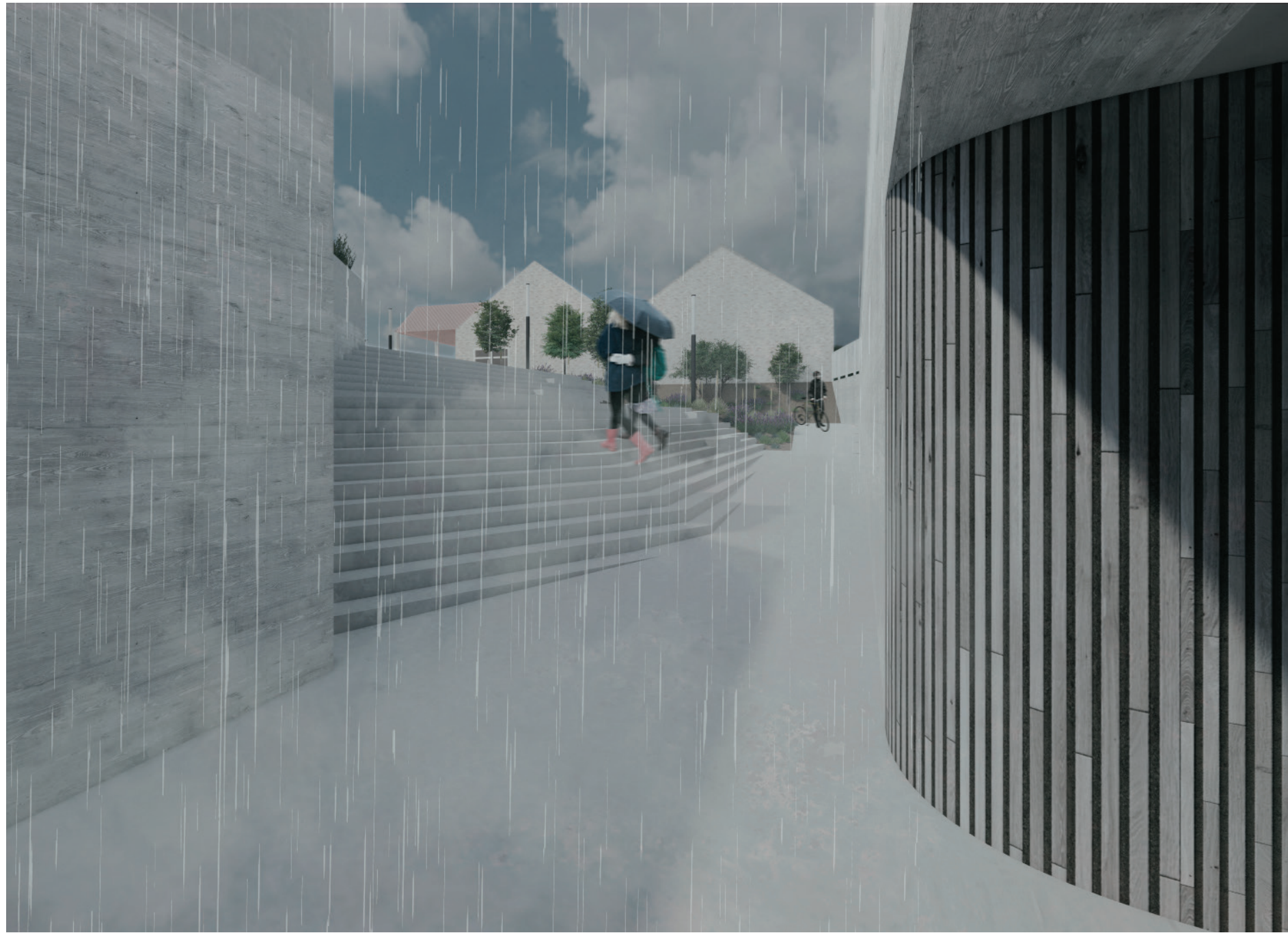


a new characteristic structure

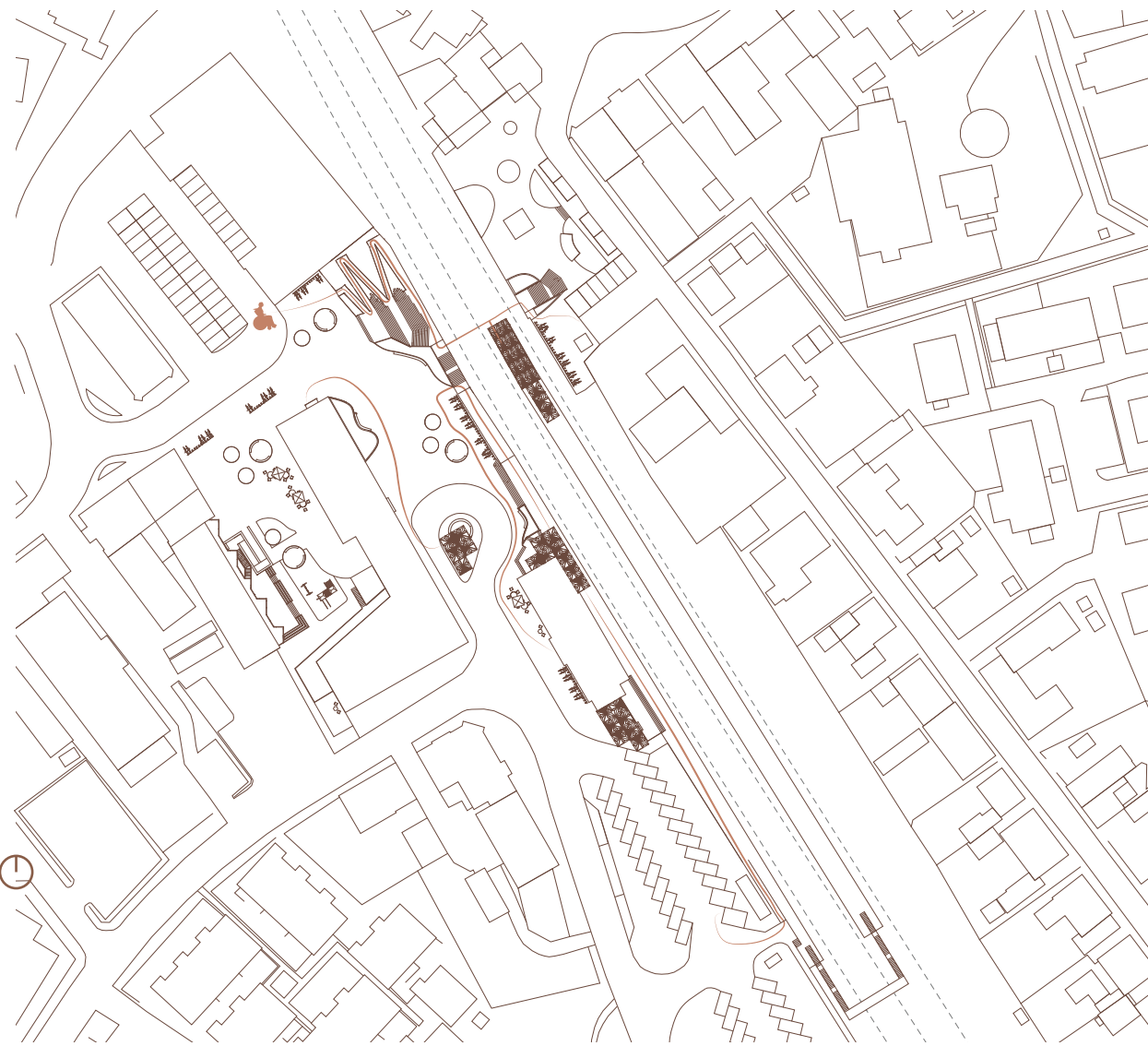
As an element a new shelter has been designed for the mobility hub. This shelter is a key element in the characterization of the area. It has been designed so that the roof can be changed depending on the need. Generally, two different types of roofs are available. One is a lamella covered roof that allows for sunlight to go through, and the other is a hard surface roof, providing shelter against rain. Furthermore, they have been designed so that they can be combined next to one another, depending on the need of the specific shelter. These shelters have been designed with a single column in order for it to be possible to move around them, even on the narrow platform 2.



The visualization shows the connection between the new bus terminal and the station area. The shelters provide cover during summer sun and rainy autumns. With the characteristic designed emphasizing the hub elements around Ejby town centre.

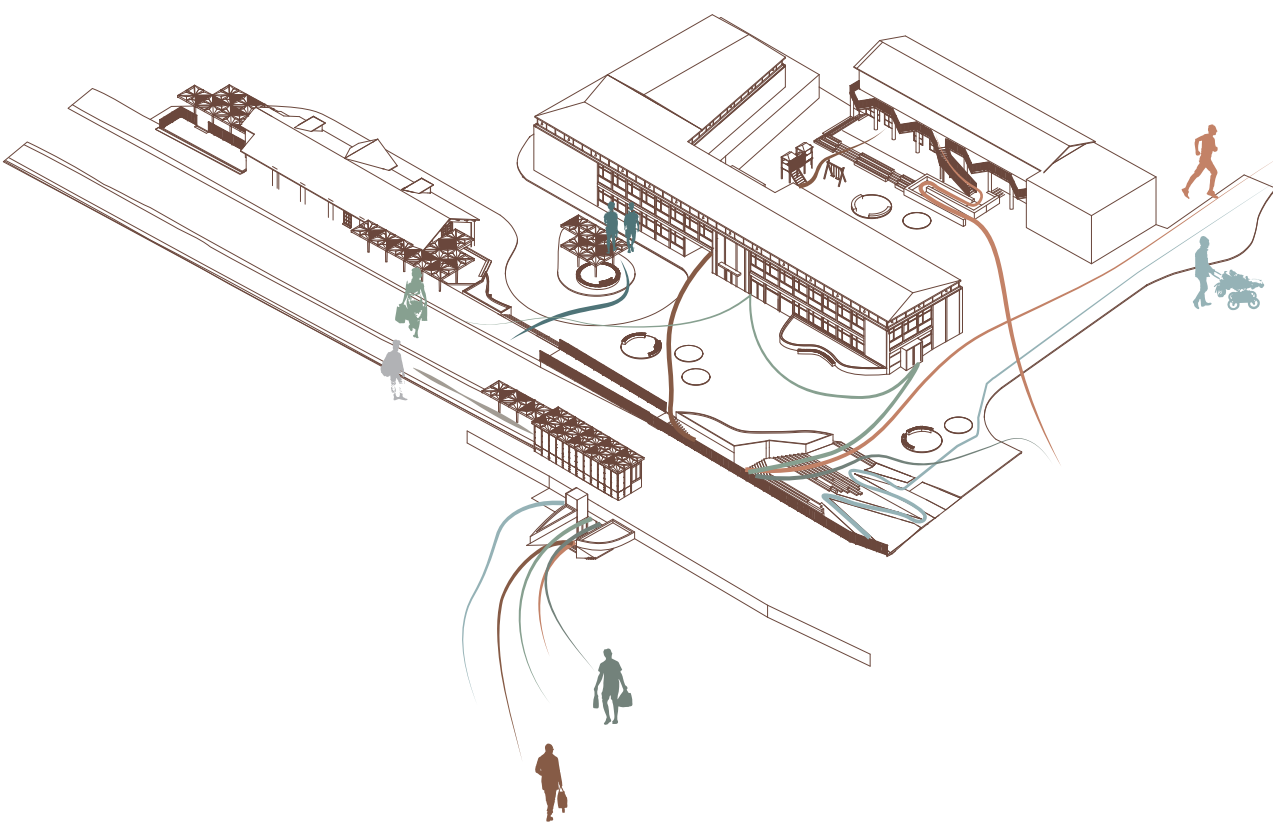


The new opening of the tunnel connects in a more direct way up to the station and Ejby Bytorv and provides an open view when down in the tunnel.



on wheels...

On the southern side, the ramp is showcased being the main corridor for disabled into the tunnel. Due to lack of space and more elevation on the northern side it has been decided that on the northern side and within the tunnel to the middle platform, that elevators are to be installed, since these take up the least amount of space. Further does the diagram explain the different routes disabled now can use making the area much more accessible for all types of users in both directions of the site.



everyday users...

The diagram shows an example of the circulation from different users during the day. An important notion is the connection between the bus and the train station that now has a visible connection, therefore making a stronger connection between the two areas. Furthermore, the diagram clarifies the use of the new urban staircase, that now leads people through the area with its more open typography.

life at the hub

The two sections show life at the plaza and how the area can be used. The sections further elaborate the connectivity between the different functions. In particular the relationship between Ejby Bytorv and Ejby Station.



The new town square in Ejby can be used for different purposes during the year.



section AA 1:500



section BB 1:500