



Aalborg Universitet

AALBORG UNIVERSITY
DENMARK

Clinical course of medically managed patients with large and small duct chronic pancreatitis

Mahdi, Marco B.; Steinkohl, Emily; Singh, Vikesh K.; Drewes, Asbjørn M.; Frøkjær, Jens B.; Olesen, Søren S.

Published in:
Clinical and translational gastroenterology

DOI (link to publication from Publisher):
[10.14309/ctg.0000000000000537](https://doi.org/10.14309/ctg.0000000000000537)

Creative Commons License
CC BY-NC-ND 4.0

Publication date:
2023

Document Version
Publisher's PDF, also known as Version of record

[Link to publication from Aalborg University](#)

Citation for published version (APA):
Mahdi, M. B., Steinkohl, E., Singh, V. K., Drewes, A. M., Frøkjær, J. B., & Olesen, S. S. (2023). Clinical course of medically managed patients with large and small duct chronic pancreatitis. *Clinical and translational gastroenterology*, 14(1), Article e00537. Advance online publication. <https://doi.org/10.14309/ctg.0000000000000537>

General rights

Copyright and moral rights for the publications made accessible in the public portal are retained by the authors and/or other copyright owners and it is a condition of accessing publications that users recognise and abide by the legal requirements associated with these rights.

- Users may download and print one copy of any publication from the public portal for the purpose of private study or research.
- You may not further distribute the material or use it for any profit-making activity or commercial gain
- You may freely distribute the URL identifying the publication in the public portal -

Take down policy

If you believe that this document breaches copyright please contact us at vbn@aub.aau.dk providing details, and we will remove access to the work immediately and investigate your claim.

Clinical Course of Medically Managed Patients With Large and Small Duct Chronic Pancreatitis

Marco B. Mahdi, BM¹, Emily Steinkohl, MD, PhD², Vikesh K. Singh, MD, MSc³, Asbjørn M. Drewes, MD, PhD, DMSc^{1,4}, Jens B. Frøkjær, MD, PhD^{2,4} and Søren S. Olesen, MD, PhD^{1,4}

INTRODUCTION: Pancreatic duct obstruction is the primary indication for endoscopic and/or surgical therapy in patients with chronic pancreatitis (CP). However, the clinical course of medically managed patients in relation to pancreatic duct obstruction is largely unknown.

METHODS: This was a retrospective cohort study of medically managed patients with CP. We classified patients based on pancreatic duct obstruction from a stricture or stone using cross-sectional imaging (i.e., large vs small duct CP). We compared prevalence of diabetes and exocrine insufficiency (EPI) between subgroups at inclusion and investigated risk of new-onset diabetes, EPI, and all-cause mortality over a follow-up period of 5 years. Changes in pancreatic morphology were studied in patients who underwent follow-up imaging.

RESULTS: A total of 198 patients (mean age 58 ± 12 years, 70% male, 60% alcoholic etiology, 38% large duct CP) were evaluated. At inclusion, patients with large vs small duct CP had a higher prevalence of both diabetes (43% vs 24%, $P = 0.004$) and EPI (47% vs 28%, $P = 0.007$). There was an increased risk of new-onset EPI in patients with large duct CP (hazard ratio 1.72; 95% confidence interval [1.05–2.80], $P = 0.031$) and higher rates of pancreatic atrophy ($P < 0.001$). No differences between groups were observed for new-onset diabetes and all-cause mortality. Conversion from small to large duct CP or *vice versa* during follow-up was observed in 14% of patients.

DISCUSSION: In a medically managed cohort of patients, large duct CP was associated with increased risk of EPI and pancreatic atrophy compared with small duct CP.

Clinical and Translational Gastroenterology 2023;14:e00537. <https://doi.org/10.14309/ctg.0000000000000537>

INTRODUCTION

Chronic pancreatitis (CP) is a fibroinflammatory disease characterized by sustained pancreatic inflammation with excess risk of comorbidity and mortality (1,2). Most patients present with a primary symptom of abdominal pain and, as the disease progresses, develop exocrine pancreatic insufficiency (EPI) and pancreatogenic diabetes mellitus (1,3). However, there is great variability in symptom severity and the rate of disease progression between patients. This is probably related to differences in exposure to etiological risk factors, genetic factors, and hitherto undetermined disease modifiers (4,5).

The clinical course of CP has mostly been studied in relation to etiology. Accordingly, in a landmark study from 1994, Layer et al. (6) investigated the clinical course of alcoholic vs early-onset and late-onset idiopathic CP and reported a worse prognosis for patients with alcoholic etiology. The findings corroborated earlier observations and were subsequently replicated in multicenter-based and population-based studies using updated classifications of etiological risk factors

including alcohol, smoking, and genetics (4,7–13). However, in addition to these established risk factors, additional mediators may be of relevance for disease progression and the clinical course of CP (8).

In most patients with CP, decisions on management are guided by the presence of pancreatic duct obstruction from a stricture or stone on cross-sectional imaging (3). According to most guidelines, patients with large duct disease due to a pancreatic duct stricture and/or stone(s) should be referred for endoscopic or surgical decompression to relieve pain when medical therapy is unsuccessful (14–17). By contrast, patients with small duct disease (i.e., no signs of pancreatic duct obstruction on cross-sectional imaging) are mostly managed medically or by surgical resection procedures in select cases (15–17). As such, pancreatic duct morphology is a defining feature for CP management and may also be associated with disease progression. However, this has only been scarcely investigated, and it remains largely unknown whether the prognosis and risk of disease progression differ between patients with large and small duct disease. In

¹Centre for Pancreatic Diseases and Mech-Sense, Department of Gastroenterology & Hepatology, Aalborg University Hospital, Aalborg, Denmark; ²Department of Radiology, Aalborg University Hospital, Aalborg, Denmark; ³Division of Gastroenterology and Hepatology, Department of Medicine, Johns Hopkins University School of Medicine, Baltimore, Maryland, USA; ⁴Department of Clinical Medicine, Aalborg University, Aalborg, Denmark. **Correspondence:** Søren S. Olesen, MD, PhD. E-mail: soso@rn.dk.

Received May 16, 2022; accepted September 21, 2022; published online October 6, 2022

© 2022 The Author(s). Published by Wolters Kluwer Health, Inc. on behalf of The American College of Gastroenterology

addition, the natural evolution of pancreatic duct morphology (i.e., change from small to large duct disease or *vice versa*) is unknown.

We investigated the clinical course of medically managed patients with CP in relation to pancreatic duct morphology. We hypothesized that CP patients with large duct disease have a worse prognosis, including increased risk of EPI, diabetes, and morphological progression, compared with patients with small duct disease. The aims of this study were (i) to compare the prevalence of EPI and diabetes between subgroups at inclusion (cross-sectional study) and (ii) to compare risk of new-onset EPI, new-onset diabetes, and death between subgroups (follow-up study). In patients with available imaging at follow-up, we also compared morphological progression between subgroups and investigated the rate of transition between large and small duct disease (imaging substudy).

METHODS

Study design and approval for data acquisition

This was a retrospective cohort study conducted at the Center for Pancreatic Diseases, Department of Gastroenterology, Aalborg University Hospital, Denmark. The Institutional Review Board at Aalborg University Hospital granted permission to perform this study, and approval for medical record review and registration of patient and disease characteristics was provided by the Danish Patient Safety Authority (study ID 2020-038989). Owing to the observational nature of our study, approval from an ethics committee and written informed consent were not required according to the Danish legislation.

Inclusion and exclusion criteria

The study cohort comprised consecutive adult patients with CP (18 years and older) who visited the outpatient clinic between June 2011 and March 2020. All patients had a definitive diagnosis of CP according to M-ANNHEIM diagnostic criteria and a cross-sectional imaging examination (computed tomography and/or magnetic resonance imaging) within a maximum of 12 months before or after the date of the outpatient visit (18). Patients with a history of pancreatic surgery or procedures directed at the pancreatic duct (endoscopic or surgical decompression) were excluded to conduct an unbiased assessment of pancreatic duct morphology and its relation to clinical outcomes. This approach was chosen because invasively treated patients comprised a heterogeneous group including (i) patients who had undergone pancreatic duct decompression before referral to our institution, (ii) patients referred for endoscopic treatment after the primary visit in our clinic, and (iii) patients undergoing pancreatic duct decompression at a later point during follow-up. Consequently, analysis of outcomes for these patients was not straightforward and prone to different sources of bias including immortal time bias (endoscopic treatment conducted before initiation of follow-up). Therefore, we decided to focus our analysis on medically managed patients. Patients with incomplete clinical data at inclusion or follow-up, patients with autoimmune pancreatitis (without evidence of definitive CP), and patients developing pancreatic cancer during follow-up were also excluded from the study cohort.

Data acquisition

Patient's medical records were reviewed at inclusion (date of cross-sectional imaging) and followed until November 1, 2021,

(administrative censoring) or the development of new-onset EPI, new-onset diabetes, or death (whichever came first). In the analyses of EPI and diabetes, patients who died before the end of this study (November 1, 2021) were censored at the date of death because we did not consider competing risk to be a major source of bias because of proportionate death rates between patients with large and small duct disease. Patients with available cross-sectional imaging during the follow-up period were included in a nested imaging substudy to investigate changes in pancreatic morphology.

Patient characteristics

Information on demographics and clinical characteristics were derived from patients' medical records and a prospectively maintained database (19). The classification of etiology was based on the TIGAR-O system and reported as alcoholic, idiopathic, or other (20). Smoking habits were defined as current smoking status and categorized as never, past, or current smoker (19). Alcohol consumption was reported as weekly consumption of alcohol units, classified as abstainers, light-to-moderate use, heavy use, or very heavy use (21). Clinical pain patterns at the time of study inclusion were defined as no pain, intermittent pain, or constant pain (22).

Outcomes

Evaluation of exocrine and endocrine pancreatic functions.

Exocrine and endocrine functions at inclusion and follow-up were derived from patients' medical records and laboratory data. A diagnosis of clinically relevant EPI was based on the prescription of pancreatic enzyme replacement therapy. In Denmark, reimbursement for pancreatic enzyme replacement therapy depends on an abnormal pancreatic function test result (fecal elastase test or fat absorption coefficient). Therefore, patients with an enzyme prescription are most likely to have an abnormal pancreatic function test and symptoms relevant for enzyme prescription. The date of new-onset EPI was indicated by the first prescription date of pancreatic enzyme replacement therapy during follow-up.

Diabetes was defined by an HbA1c (International Federation of Clinical Chemistry) of > 48 mmol/L ($> 6.5\%$ mmol/L) or prescription of glucose-lowering therapies (23). During follow-up, the date of new-onset diabetes was based on the earliest HbA1c of > 48 mmol/L ($> 6.5\%$ mmol/L) or prescription date of glucose-lowering therapy (23).

Cross-sectional imaging. Pancreatic morphology was evaluated on T2-weighted or balanced steady-state gradient echo sequence (Fast Imaging Employing Steady-state Acquisition) images for magnetic resonance imaging and axial computed tomography images using the Picture Archiving and Communication System. The same imaging modality (magnetic resonance imaging or computed tomography) was used for inclusion and follow-up examinations within patients. The anteroposterior (AP) gland diameter was measured in standardized positions in the pancreatic head and body to obtain a proxy of pancreatic parenchymal volume as recommended in international guidelines (24–26). Measurement points at baseline and follow-up images were placed side by side to harmonize measurement positions. Two-point measurements were positioned on the image with the widest parenchymal diameter while avoiding cystic lesions, but no correction for pancreatic duct dilation was performed. The

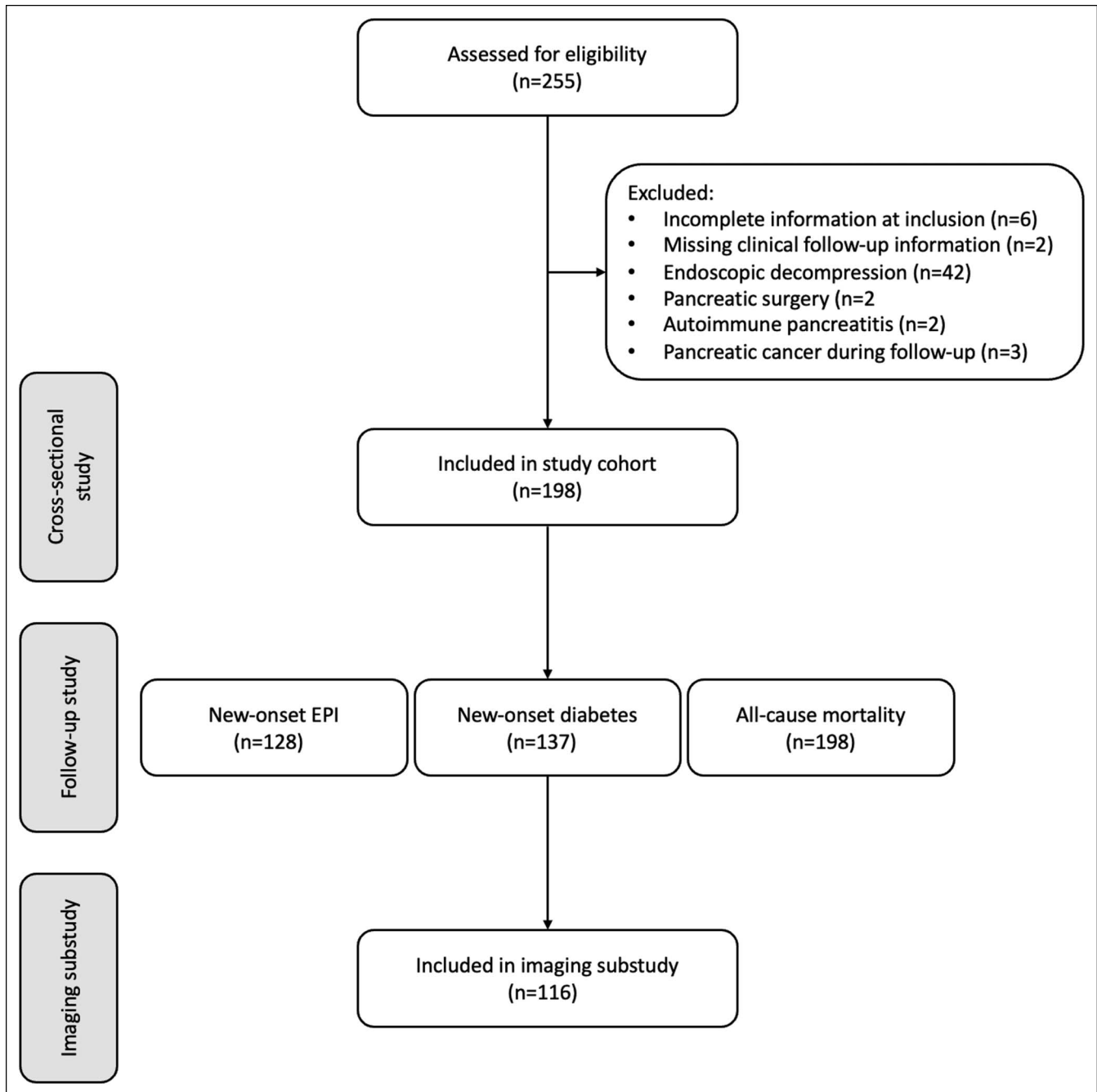


Figure 1. Flow diagram of the patient inclusion process. EPI, exocrine pancreatic insufficiency.

presence of pancreatic duct obstruction (i.e., large duct CP) was indicated by abrupt pancreatic duct caliber change, with upstream dilatation supported by the presence of obstructing intraductal strictures and/or stone(s) (24). This definition was chosen because it has a stronger association with clinical symptoms than definitions based on pancreatic duct diameters (27).

Statistical analysis

Data are expressed as means \pm SDs for continuous variables and numbers (percentages) for categorical variables unless otherwise indicated. Demographic and clinical characteristics between patients with large vs small duct CP at inclusion were

compared using the Fisher exact test or Student *t* test. Follow-up time was reported as median (interquartile range [IQR]). Survival curves were constructed using the Kaplan-Meier method, and Cox proportional hazard regression models were used to analyze the association between pancreatic duct morphology (large vs small duct CP) and new-onset EPI, new-onset diabetes, and all-cause mortality. Models were adjusted for age, sex, and duration of CP. Effect sizes were reported as hazard ratios (HRs) with 95% confidence intervals (CIs). Changes in AP diameter of the pancreatic head and body between baseline and follow-up were analyzed using univariable and multivariable linear regression analyses adjusted for age,

Table 1. Demographic and clinical characteristics of the study cohort at inclusion

| | All patients with CP (n = 198) | Small duct CP (n = 123) | Large duct CP (n = 75) | P value ^a |
|-------------------------------------|--------------------------------|-------------------------|------------------------|----------------------|
| Mean age, yr (SD) | 58.2 (12.0) | 57.0 (12.4) | 60.3 (11.2) | 0.061 |
| Male sex, n (%) | 138 (70) | 78 (63) | 60 (80) | 0.010 |
| Median duration of CP, yr (IQR) | 1 (0–5) | 1 (0–3) | 2 (0–8) | 0.021 |
| Etiology, n (%) | | | | |
| Alcohol | 119 (60) | 71 (58) | 48 (64) | 0.468 |
| Idiopathic | 55 (28) | 38 (31) | 17 (23) | |
| Other | 24 (12) | 14 (11) | 10 (13) | |
| Smoking, n (%) | | | | |
| Never smoker | 26 (13) | 16 (13) | 10 (13) | 0.874 |
| Former smoker | 45 (23) | 26 (21) | 19 (25) | |
| Current smoker | 115 (58) | 74 (60) | 41 (55) | |
| Not reported | 12 (6) | 7 (6) | 5 (7) | |
| Alcohol consumption, n (%) | | | | |
| Abstainer | 115 (58) | 77 (63) | 38 (51) | 0.111 |
| Light-to-moderate use | 38 (19) | 20 (16) | 18 (24) | |
| Heavy use | 12 (6) | 9 (7) | 3 (4) | |
| Very heavy use | 15 (8) | 10 (8) | 5 (7) | |
| Not reported | 18 (9) | 7 (6) | 11 (15) | |
| Recurring acute pancreatitis, n (%) | | | | |
| Yes | 81 (41) | 50 (41) | 31 (41) | 0.85 |
| No | 90 (45) | 57 (46) | 33 (44) | |
| Not reported | 27 (14) | 16 (13) | 11 (15) | |
| Pain pattern, n (%) | | | | |
| No pain | 69 (35) | 39 (32) | 30 (40) | 0.137 |
| Intermittent pain | 71 (36) | 48 (39) | 23 (31) | |
| Constant pain | 47 (24) | 32 (26) | 15 (20) | |
| Not reported | 11 (6) | 4 (3) | 7 (9) | |
| Diabetes mellitus, n (%) | 61 (31) | 29 (24) | 32 (43) | 0.004 |
| EPI, n (%) | 70 (35) | 35 (28) | 35 (47) | 0.007 |

CP, chronic pancreatitis; EPI, exocrine pancreatic insufficiency.
^aLarge vs small duct CP.

sex, and time between imaging studies. Effect sizes were expressed as mean differences with 95% CIs. Statistical significance was defined as a 2-tailed *P* value of < 0.05. The software package STATA/MP 17.0 (StataCorp LP, College Station, TX) was used.

RESULTS

A total of 255 consecutive patients were initially screened for inclusion, of whom 57 were excluded as illustrated in Figure 1. Three patients were excluded because of pancreatic cancer during follow-up, of whom 1 patient was diagnosed with pancreatic cancer within 3 months from CP diagnosis and, thus, was likely misclassified as CP. The 2 other patients developed pancreatic cancer after 62 and 67 months, respectively; 1 had large duct CP and 1 had small duct CP at index cross-sectional imaging. The final study cohort comprised 198 patients; 75 (38%) had large duct CP, and 123 (62%) had small duct CP. The mean age of included patients was 58 ± 12 years; 70% were male; and 62% had an alcoholic etiology (Table 1).

Patient characteristics in small vs large duct CP

Demographic and disease characteristics stratified by pancreatic duct morphology (small vs large duct CP) at inclusion are summarized in Table 1. A male predominance was observed in patients with large vs small duct CP (80% vs 63%, *P* = 0.01), and patients with large duct CP tended to be older than their counterparts with small duct CP (mean age 60 vs 57 years, *P* = 0.06) and had CP for a longer period (median duration of CP 2 vs 1 year, *P* = 0.021). In addition, patients with large duct CP had a higher prevalence of diabetes (43% vs 24%, *P* = 0.004) and EPI (47% vs 28%, *P* = 0.007) at inclusion while the distribution of pain patterns was similar between groups (*P* = 0.13). Distributions of etiology, smoking status, and quantity of alcohol consumption were not associated with pancreatic duct morphology (Table 1).

Outcomes in small vs large duct CP

New-onset exocrine pancreatic insufficiency. The presence of new-onset EPI during the follow-up period was evaluated in 128 patients without EPI at inclusion (Figure 1). The median observation time was 2.2 years (IQR 0.3–5.0). After 5 years, 75% of patients with large duct CP developed new-onset EPI compared with 52% of patients with small duct CP (HR 1.72; 95% CI [1.05–2.80], *P* = 0.031) (Figure 2a and Table 2).

New-onset diabetes. The presence of new-onset diabetes during the follow-up period was evaluated in 137 patients without diabetes at inclusion (Figure 1). The median observation time was 5.0 years (IQR 3.0–5.0). After 5 years, 40% of patients with large duct disease developed new-onset diabetes compared with 26% of patients with small duct disease (HR 1.69; 95% CI [0.80–3.55], *P* = 0.163) (Figure 2b and Table 2).

All-cause mortality. Mortality was assessed in the full study cohort (*n* = 198) (Figure 1). The median observation time was 5.0 years (IQR 3.2–5.0). After 5 years, 21% of patients with large duct disease had died compared with 19% of patients with small duct disease (HR 0.96; 95% CI [0.49–1.88], *P* = 0.90) (Figure 2c and Table 2).

Morphological progression in small vs large duct disease

Follow-up imaging studies were available for 116 patients (Figure 1). The median follow-up time between imaging examinations was 2.7 years (IQR 1.6–4.7). The mean change in AP diameter of the pancreatic head was -2.7 ± 3.7 mm in the large duct group compared with -0.1 ± 2.6 mm in the small

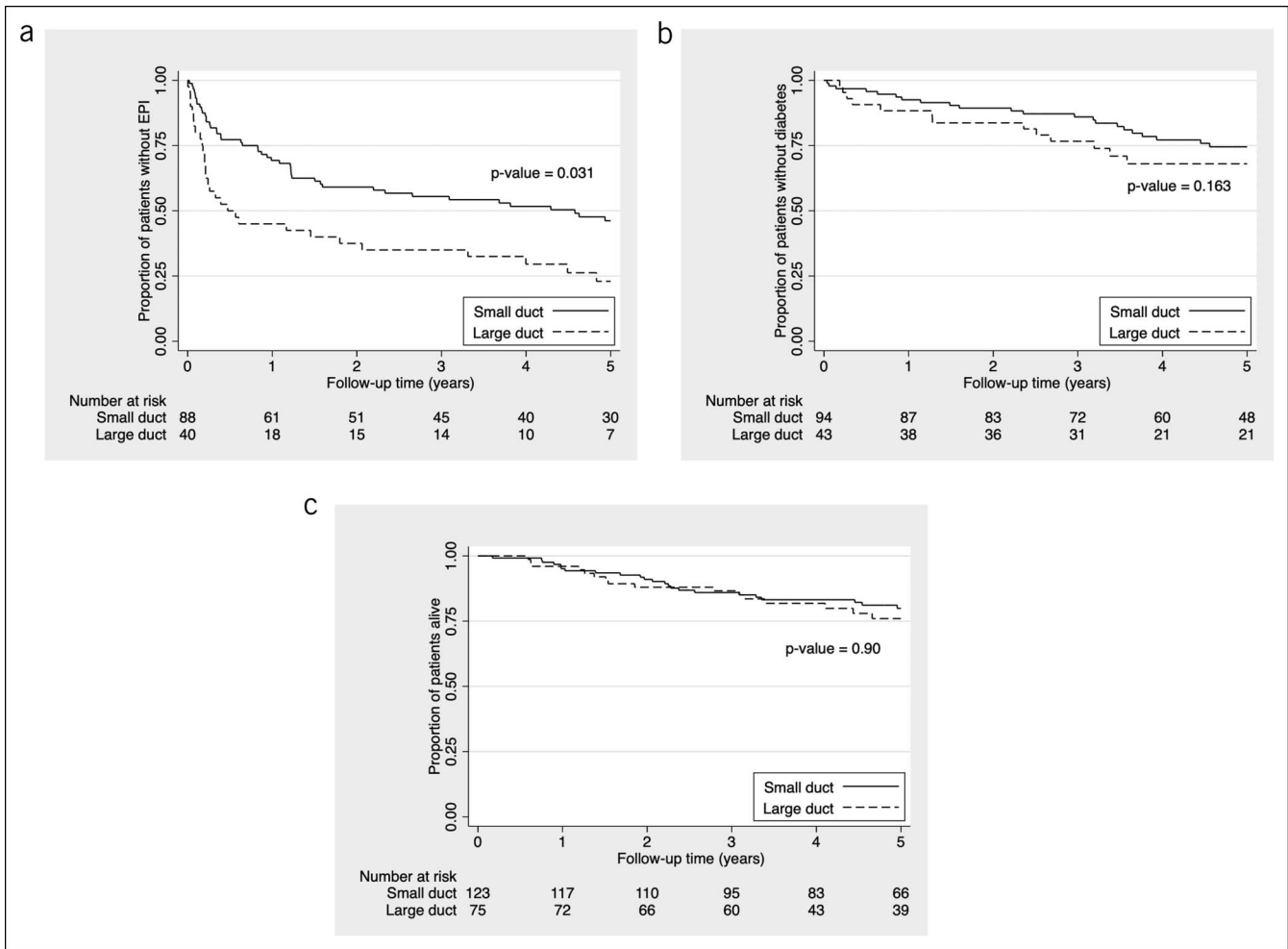


Figure 2. A Kaplan-Meier plot illustrating the proportion of patients (a) without exocrine pancreatic insufficiency, (b) without diabetes, and (c) alive. CP, chronic pancreatitis.

duct group (adjusted mean difference -2.7 mm; 95% CI $[-4.0$ to $-1.5]$; $P < 0.001$). The mean change in AP diameter of the pancreatic body was -1.9 ± 2.5 mm in the large duct group compared with -1.1 ± 3.1 mm in the small duct group (adjusted mean difference -0.9 mm; 95% CI $[-2.1$ to $0.4]$, $P = 0.17$) (Figure 3 and Table 3). From inclusion to follow-up, 17 of 116 patients (14%) changed their pancreatic duct morphology, of whom 14 progressed from small to large duct disease and 3 regressed from large to small duct disease (Figure 4).

DISCUSSION

This study is the first to evaluate the clinical course of medically managed patients with CP based on pancreatic duct morphology (i.e., large vs small duct CP). Compared with patients with small duct CP, patients with large duct CP had a higher prevalence of EPI and diabetes at inclusion and an approximately 2-fold increased risk of new-onset EPI and increased pancreatic atrophy over a median follow-up time of 2.2 and 2.7 years. Most of the patients (86%) had an unchanged pancreatic duct morphology

Table 2. All-cause mortality and clinical outcomes in patients with small vs large duct chronic pancreatitis

| Outcome | Small duct CP | | | Large duct CP | | | Hazard ratio (95% CI) | |
|---------------------|---------------|------------------|----------------|---------------|------------------|----------------|-----------------------|-------------------------------|
| | Events | Patients at risk | Follow-up (mo) | Events | Patients at risk | Follow-up (mo) | Crude | Adjusted ^a |
| New-onset EPI | 46 | 88 | 3,015 | 30 | 40 | 887 | 2.00 (1.26–3.18) | 1.72 (1.05–2.80) ^b |
| New-onset diabetes | 24 | 94 | 4,479 | 17 | 43 | 1,865 | 1.42 (0.72–2.82) | 1.69 (0.80–3.55) |
| All-cause mortality | 23 | 123 | 6,030 | 16 | 75 | 3,538 | 1.18 (0.62–2.24) | 0.96 (0.49–1.88) |

CI, confidence interval; CP, chronic pancreatitis; EPI, exocrine pancreatic insufficiency.

^aAdjusted for age, sex, and duration of CP.

^b P value = 0.031.

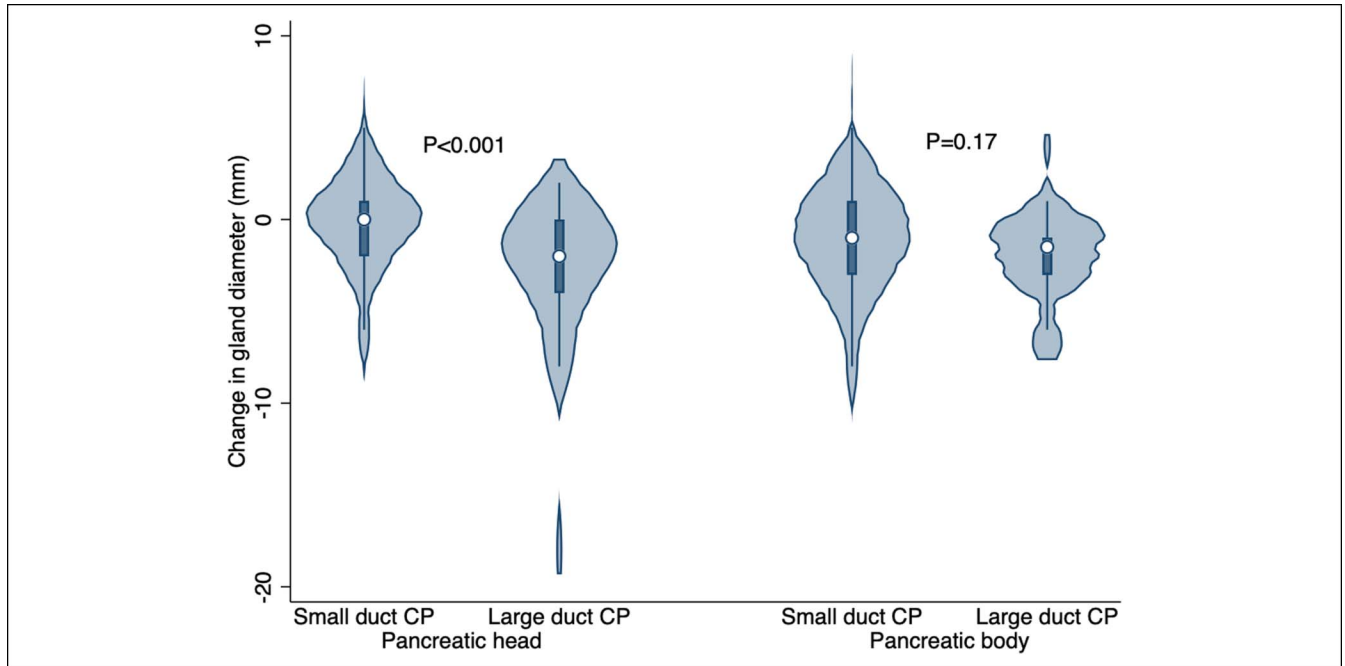


Figure 3. Mean change (millimeters) in anteroposterior (AP) diameter of the pancreatic head and body in patients with large and small duct CP. CP, chronic pancreatitis.

over the follow-up period. Altogether, these findings suggest that medically managed patients with large duct CP have increased risk of functional and morphological progression compared with patients with small duct CP. Furthermore, pancreatic duct morphology rarely changes in the absence of endoscopic or surgical intervention. The findings may have implications for prognostication and management.

Clinical course of large and small duct CP

The prevalence of EPI at inclusion and risk of new-onset EPI during follow-up were increased in patients with large duct CP compared with patients with small duct CP. In addition to pancreatic duct obstruction hindering pancreatic secretory outflow, this finding may also be related to accelerated ductal and acinar cell death as indicated by the excess pancreatic atrophy observed in patients with large duct CP. Accelerated pancreatic atrophy is also observed in other pancreatic disease leading to pancreatic duct obstruction including pancreatic ductal adenocarcinoma and intraductal papillary mucinous neoplasia (20,28).

The prevalence of diabetes was increased in patients with large duct disease at inclusion while the risk of new-onset diabetes was

comparable between groups during follow-up. These findings may be explained by the longer duration of CP in the large vs small duct group at study inclusion. However, we adjusted multivariable models to account for disease duration as a putative confounding factor, and as such, we do not expect that disease duration is the main reason for the lack of association between pancreatic duct morphology and risk of new-onset diabetes. Indeed, our findings may indicate that diabetes is less dependent on pancreatic morphology, as opposed to EPI. In line with this, we recently demonstrated that patients with pancreatogenic diabetes were characterized by EPI and pancreatic atrophy, but approximately half of the patients without diabetes had similar exocrine pancreatic function and morphology as their diabetic counterparts, thus indicating additional mediators of diabetes (29). These findings underline the complexity and multiple pathophysiological mechanism underlying diabetes in patients with CP (30,31).

Change in pancreatic duct morphology

A unique feature of this study was the investigation of a large group of patients with medically managed CP, which allowed us

Table 3. Mean change in anterior-posterior diameters from inclusion to follow-up in chronic pancreatitis patients with available imaging studies (n = 116)

| Imaging parameter | Small duct CP n = 82 | Large duct CP n = 34 | Difference (95% CI) | |
|--------------------------|-------------------------|-------------------------|---------------------|----------------------------------|
| | | | Crude | Adjusted ^a |
| Pancreatic head, mm (SD) | -0.1 ± 2.6 | -2.7 ± 3.7 | -2.6 (-3.7 to -1.4) | -2.7 (-4.0 to -1.5) ^b |
| Pancreatic body, mm (SD) | -1.1 ± 3.1 | -1.9 ± 2.5 | -0.9 (-2.0 to 0.3) | -0.8 (-2.01 to 0.4) |

CI, confidence interval; CP, chronic pancreatitis.

^aMultivariable models were adjusted for age, sex, duration of CP, and duration between imaging studies.

^bP value < 0.001.

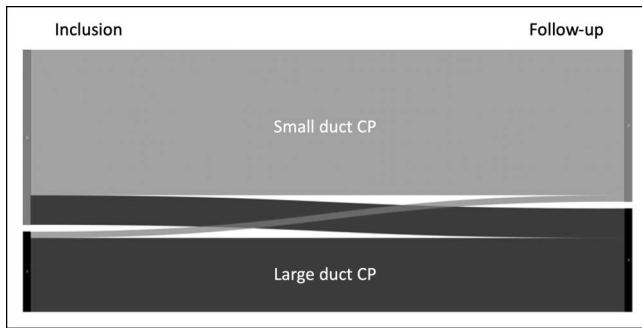


Figure 4. A Sankey diagram illustrating changes in pancreatic duct morphology in patients with large and small duct CP ($n = 116$) from inclusion (left side) to follow-up (right side). It was more common for patients to convert from small to large duct disease ($n = 14$) than large to small duct disease ($n = 3$). CP, chronic pancreatitis.

to study variations in pancreatic duct morphology over time in the absence of interventional procedures. Only a small fraction of patients (14%) changed their pancreatic duct morphology during follow-up. We are not aware of any serial investigations of pancreatic duct morphology over time to compare this finding with. Anecdotal evidence suggests that pancreatic duct obstruction may resolve spontaneously (32). However, according to our observations, this is a relatively rare event, and as such, pancreatic duct morphology does not change in most medically managed patients with CP.

Clinical implications

The finding that medically managed patients with large duct CP have increased risk of EPI and accelerated the development of pancreatic atrophy have implications for monitoring and possibly treatment strategies. Accordingly, medically managed patients with large duct disease may need an intensified clinical follow-up including regular assessment of nutritional status and pancreatic exocrine function (and the presence of diabetes). Earlier diagnosis of EPI is important because it provides a window of opportunity to improve patients' nutritional status before the development of severe nutritional deficits and, thus, possibly improve quality of life and prevent associated comorbidities such as sarcopenia, osteoporosis, and low trauma fractures (33–37). The poorer prognosis associated with large duct CP may also have relevance for prognostication and prediction of disease outcome. As such, pancreatic duct morphology could be a useful parameter to improve the accuracy of severity scores in CP, and importantly, it will be straightforward to implement this parameter in a clinical setting (38).

Pancreatic duct obstruction is the primary indication for endoscopic and/or surgical therapy in patients with CP according to recent guidelines (3,14). However, the pain-relieving effect of pancreatic duct decompression is debated and currently under evaluation in a sham-controlled trial (39,40). The effect of pancreatic duct decompression on pancreatic functional parameters and morphology is difficult to comprehend because this requires long-term follow-up (for several years), which will hardly be feasible in a sham-controlled study (39). As such, observational studies provide an important information source in this context. Although our study was not designed to evaluate the effect of pancreatic duct decompression on pancreatic function, the finding that patients with large duct CP had increased risk of EPI and atrophy may suggest that decompression could decelerate

disease progression. Findings from previous observational studies have been mixed with some studies reporting a beneficial effect of decompression on pancreatic functional parameters, whereas others did not find support for a beneficial effect (41–44).

Study strengths and limitations

A strength and unique aspect of this study is the collection of a large group of patients with CP who are being managed medically only. In many countries, the predilection for invasive therapy in patients with large duct CP is very strong, which hinders the conduct of such studies. Indeed, inclusion of a patient population in a country with a single-payer healthcare system where there are high levels of interpersonal trust and trust in the government has been associated with improved health outcomes (45). This may explain the more restricted use of invasive therapies for CP management in the Scandinavian countries where medical treatment including analgesics and neuromodulators are frequently used with success, thus limiting the necessity to proceed to invasive therapies (3,19).

Owing to the retrospective nature of our study, it was not possible to define the reasons for withholding from pancreatic duct interventions in the group of patients with large duct CP. However, this was most likely explained by various reasons including patients' preference and satisfactory response to medical therapy as mentioned above. Indeed, in our study, only 20% in the group of patients with large duct CP reported a constant pain pattern at inclusion, which is lower than that reported in other cohorts (46,47). As such, the generalizability of our findings outside the Scandinavian countries may be questioned. Contrarily, population-based data suggest that the prevalence of severe painful CP (requiring interventional therapy) is much lower than that reported in studies in specialized referral centers (13). Because our clinic serves as a primary referral center for the North Denmark region (approximately 500,000 inhabitants), it is likely that our patient populations more closely reflect a general population-based sample, which again would explain the lower prevalence of constant pain compared with other cohorts (46,47). The diagnosis of EPI was based on a surrogate measure (prescription of pancreatic enzyme replacement therapy) rather than testing of the pancreatic function. However, in the absence of a highly accurate diagnostic test for EPI, the initial administration and continuation of pancreatic enzyme replacement therapy could be considered a more clinically relevant outcome. Monitoring for new-onset diabetes was not standardized at fixed time points, which may introduce a surveillance bias, because symptomatic patients may have been more frequently monitored. This is also a limitation of the imaging substudy. Altogether, these biases warrant prospective cohort studies with fixed time points for functional and imaging assessments (48,49). Finally, assessments of the anterior-posterior gland diameters were not corrected for pancreatic duct dilation. However, as a higher rate of pancreatic atrophy was observed in patients with large duct disease, subtraction of pancreatic duct diameter would most likely have strengthened this finding.

Patients with large duct CP have an increased risk of EPI and pancreatic atrophy compared with those with small duct CP. These findings attest to the understanding of the clinical course of CP and may have implications for management and prognostication.

CONFLICTS OF INTEREST

Guarantor of the article: Søren S. Olesen, MD, PhD.

Specific author contributions: M.B.M.: drafting of the manuscript and acquisition of data; E.S.: acquisition of data, imaging analyses, and critical revision of the manuscript for important intellectual content; V.K.S.: study design and critical revision of the manuscript for important intellectual content; A.M.D.: study design and critical revision of the manuscript for important intellectual content; J.B.F.: imaging analyses and critical revision of the manuscript for important intellectual content; S.S.O.: study design, statistical analysis, analysis and interpretation of data, and drafting and critical revision of the manuscript for important intellectual content. All authors approved of the final version of the manuscript.

Financial support: All work was completed independent of funding.

Potential competing interests: None to report.

Study Highlights

WHAT IS KNOWN

- ✓ Pain is the primary indication for endoscopic and/or surgical therapy in patients with large duct chronic pancreatitis.
- ✓ The clinical course of medically managed patients with large and small duct chronic pancreatitis is largely unknown.

WHAT IS NEW HERE

- ✓ Patients with medically managed large duct chronic pancreatitis have increased risk of exocrine pancreatic insufficiency and atrophy compared with those with small duct chronic pancreatitis.
- ✓ Pancreatic duct morphology rarely changes in the absence of endoscopic or surgical intervention.

REFERENCES

1. Hart PA, Conwell DL. Chronic pancreatitis: Managing a difficult disease. *Am J Gastroenterol* 2020;115(1):49–55.
2. Bang UC, Benfield T, Hyldstrup L, et al. Mortality, cancer, and comorbidities associated with chronic pancreatitis: A Danish nationwide matched-cohort study. *Gastroenterology* 2014;146(4):989–94.e1.
3. Singh VK, Yadav D, Garg PK. Diagnosis and management of chronic pancreatitis: A review. *JAMA* 2019;322(24):2422–34.
4. Olesen SS, Nøjgaard C, Poulsen JL, et al. Chronic pancreatitis is characterized by distinct complication clusters that associate with etiological risk factors. *Am J Gastroenterol* 2019;114(4):656–64.
5. Whitcomb DC, Frulloni L, Garg P, et al. Chronic pancreatitis: An international draft consensus proposal for a new mechanistic definition. *Pancreatol* 2016;16(2):218–24.
6. Layer P, Yamamoto H, Kalthoff L, et al. The different courses of early- and late-onset idiopathic and alcoholic chronic pancreatitis. *Gastroenterology* 1994;107(5):1481–7.
7. Lewis MD, Talluri J, Wilcox CM, et al. Differences in age at onset of symptoms, and effects of genetic variants, in patients with early vs late-onset idiopathic chronic pancreatitis in a North American cohort. *Clin Gastroenterol Hepatol* 2021;19(2):349–57.
8. Spagnolo DM, Greer PJ, Ohlsen CS, et al. Acute and chronic pancreatitis disease prevalence, classification, and comorbidities: A cohort-study of the UK biobank. *Clin Transl Gastroenterol* 2022;13(1):e00455.
9. Ammann RW, Buehler H, Muench R, et al. Differences in the (nonalcoholic) and natural history of idiopathic alcoholic chronic pancreatitis. A comparative long-term study of 287 patients. *Pancreas* 1987;2(4):368–77.
10. Ammann RW, Muellhaupt B. The natural history of pain in alcoholic chronic pancreatitis. *Gastroenterology* 1999;116(5):1132–40.
11. Müllhaupt B, Truninger K, Ammann R. Impact of etiology on the painful early stage of chronic pancreatitis: A long-term prospective study. *Z Gastroenterol* 2005;43(12):1293–301.
12. Lowenfels AB, Maisonneuve P, Cavallini G, et al. Prognosis of chronic pancreatitis: An international multicenter study. International Pancreatitis Study Group. *Am J Gastroenterol* 1994;89(9):1467–71.
13. Machicado JD, Chari ST, Timmons L, et al. A population-based evaluation of the natural history of chronic pancreatitis. *Pancreatol* 2018;18(1):39–45.
14. Dumonceau J-M, Delhaye M, Tringali A, et al. Endoscopic treatment of chronic pancreatitis: European Society of Gastrointestinal Endoscopy (ESGE) guideline—updated August 2018. *Endoscopy* 2019;51(02):179–93.
15. Drewes AM, Bouwense SAW, Campbell CM, et al. Guidelines for the understanding and management of pain in chronic pancreatitis. *Pancreatol* 2017;17(5):720–31.
16. Dominguez-Munoz JE, Drewes AM, Lindkvist B, et al. Recommendations from the United European Gastroenterology evidence-based guidelines for the diagnosis and therapy of chronic pancreatitis. *Pancreatol* 2018;18(8):847–54.
17. Löhr JM, Dominguez-Munoz E, Rosendahl J, et al. United European Gastroenterology evidence-based guidelines for the diagnosis and therapy of chronic pancreatitis (HaPanEU). *United Eur Gastroenterol J* 2017;5(2):153–99.
18. Schneider A, Löhr JM, Singer MV. The M-ANNHEIM classification of chronic pancreatitis: Introduction of a unifying classification system based on a review of previous classifications of the disease. *J Gastroenterol* 2007;42(2):101–19.
19. Olesen SS, Poulsen JL, Drewes AM, et al. The Scandinavian Baltic Pancreatic Club (SBPC) database: Design, rationale and characterisation of the study cohort. *Scand J Gastroenterol* 2017;52(8):909–15.
20. Whitcomb DC, North American Pancreatitis Study Group. Pancreatitis: TIGAR-O version 2 risk/etiology checklist with topic reviews, updates, and use primers. *Clin Transl Gastroenterol* 2019;10(6):e00027.
21. Yadav D, Hawes RH, Brand RE, et al. Alcohol consumption, cigarette smoking, and the risk of recurrent acute and chronic pancreatitis. *Arch Intern Med* 2009;169(11):1035–45.
22. Olesen SS, Juel J, Nielsen AK, et al. Pain severity reduces life quality in chronic pancreatitis: Implications for design of future outcome trials. *Pancreatol* 2014;14(6):497–502.
23. American Diabetes Association Professional Practice Committee. American Diabetes Association Professional Practice Committee. 2. Classification and diagnosis of diabetes: Standards of medical care in diabetes-2022. *Diabetes Care* 2022;45(Suppl 1):S17–S38.
24. Frøkjær JB, Akisik F, Farooq A, et al. Guidelines for the diagnostic cross sectional imaging and severity scoring of chronic pancreatitis. *Pancreatol* 2018;18(7):764–73.
25. Lisitskaya MV, Olesen SS, Svarc P, et al. Systematic approach for assessment of imaging features in chronic pancreatitis: A feasibility and validation study from the Scandinavian Baltic Pancreatic Club (SBPC) database. *Abdom Radiol (NY)* 2020;45(5):1468–80.
26. Tirkes T, Shah ZK, Takahashi N, et al. Reporting standards for chronic pancreatitis by using CT, MRI, and MR cholangiopancreatography: The consortium for the study of chronic pancreatitis, diabetes, and pancreatic cancer. *Radiology* 2019;290(1):207–15.
27. Olesen SS, Phillips AE, Faghhi M, et al. Overlap and cumulative effects of pancreatic duct obstruction, abnormal pain processing and psychological distress on patient-reported outcomes in chronic pancreatitis. *Gut* 2022;71(12):2518–25.
28. Kleeff J, Whitcomb DC, Shimosegawa T, et al. Chronic pancreatitis. *Nat Rev Dis Primers* 2017;3(1):17060.
29. Olesen SS, Hagn-Meincke R, Drewes AM, et al. Pancreatic atrophy and exocrine insufficiency associate with the presence of diabetes in chronic pancreatitis patients, but additional mediators are operative. *Scand J Gastroenterol* 2021;56(3):321–8.
30. Hart PA, Bellin MD, Andersen DK, et al. Type 3c (pancreatogenic) diabetes mellitus secondary to chronic pancreatitis and pancreatic cancer. *Lancet Gastroenterol Hepatol* 2016;1(3):226–37.
31. Petrov MS. Diagnosis of endocrine disease: Post-pancreatitis diabetes mellitus: Prime time for secondary disease. *Eur J Endocrinol* 2021;184(4):R137–R149.
32. Friedberg S, Slivka A, Dasyam A, et al. Chronic pancreatitis with spontaneously disappearing calcifications. *ACG Case Rep J* 2018;5(1):e94.
33. Layer P, Kashirskaya N, Gubergrits N. Contribution of pancreatic enzyme replacement therapy to survival and quality of life in patients with pancreatic exocrine insufficiency. *World J Gastroenterol* 2019;25(20):2430–41.

34. Sikkens ECM, Cahen DL, van Eijck C, et al. Patients with exocrine insufficiency due to chronic pancreatitis are undertreated: A Dutch national survey. *Pancreatology* 2012;12(1):71–3.
35. Hart PA, Yadav D, Li L, et al. High prevalence of osteopathy in chronic pancreatitis: A cross-sectional analysis from the PROCEED study. *Clin Gastroenterol Hepatol* 2022;20(9):2005–13.
36. Jøker-Jensen H, Mathiasen AS, Köhler M, et al. Micronutrient deficits in patients with chronic pancreatitis: Prevalence, risk factors and pitfalls. *Eur J Gastroenterol Hepatol* 2020;32(10):1328–34.
37. Olesen SS, Büyüksulu A, Köhler M, et al. Sarcopenia associates with increased hospitalization rates and reduced survival in patients with chronic pancreatitis. *Pancreatology* 2019;19(2):245–51.
38. Beyer G, Mahajan UM, Budde C, et al. Development and validation of a chronic pancreatitis prognosis score in 2 independent cohorts. *Gastroenterology* 2017;153(6):1544–54.e2.
39. Drewes AM, Kempeneers MA, Andersen DK, et al. Controversies on the endoscopic and surgical management of pain in patients with chronic pancreatitis: Pros and cons. *Gut* 2019;68(8):1343–51.
40. Olesen SS, Drewes AM, Gaud R, et al. Combined extracorporeal shock wave lithotripsy and endoscopic treatment for pain in chronic pancreatitis (SCHOKE trial): Study protocol for a randomized, sham-controlled trial. *Trials* 2020;21(1):338.
41. Nealon WH, Townsend CM, Thompson JC. Operative drainage of the pancreatic duct delays functional impairment in patients with chronic pancreatitis. A prospective analysis. *Ann Surg* 1988;208(3):321–9.
42. Ahmed Ali U, Pahlplatz JM, Nealon WH, et al. Endoscopic or surgical intervention for painful obstructive chronic pancreatitis. *Cochrane Database Syst Rev* 2015(3):CD007884.
43. Maartense S, Ledeboer M, Bemelman WA, et al. Effect of surgery for chronic pancreatitis on pancreatic function: Pancreatico-jejunostomy and duodenum-preserving resection of the head of the pancreas. *Surgery* 2004;135(2):125–30.
44. Talukdar R, Reddy DN, Tandan M, et al. Impact of ductal interventions on diabetes in patients with chronic pancreatitis. *J Gastroenterol Hepatol* 2021;36(5):1226–34.
45. COVID-19 National Preparedness Collaborators. Pandemic preparedness and COVID-19: An exploratory analysis of infection and fatality rates, and contextual factors associated with preparedness in 177 countries, from Jan 1, 2020, to sept 30, 2021. *Lancet* 2022;399(10334):1489–512.
46. Mullady DK, Yadav D, Amann ST, et al. Type of pain, pain-associated complications, quality of life, disability and resource utilisation in chronic pancreatitis: A prospective cohort study. *Gut* 2011;60(1):77–84.
47. Kempeneers MA, Issa Y, Verdonk RC, et al. Pain patterns in chronic pancreatitis: A nationwide longitudinal cohort study. *Gut* 2021;70(9):1724–33.
48. Yadav D, Park WG, Fogel EL, et al. PROspective evaluation of chronic pancreatitis for EpidEmiologic and translational StuDies: Rationale and study design for PROCEED from the consortium for the study of chronic pancreatitis, diabetes, and pancreatic cancer. *Pancreas* 2018;47(10):1229–38.
49. Novovic S, Borch A, Werge M, et al. Characterisation of the fibroinflammatory process involved in progression from acute to chronic pancreatitis: Study protocol for a multicentre, prospective cohort study. *BMJ Open* 2019;9(8):e028999.

Open Access This is an open access article distributed under the terms of the Creative Commons Attribution-Non Commercial-No Derivatives License 4.0 (CCBY-NC-ND), where it is permissible to download and share the work provided it is properly cited. The work cannot be changed in any way or used commercially without permission from the journal.