



AALBORG UNIVERSITY
DENMARK

Aalborg Universitet

Dataudtræk for Banker I Danmark 24/9-2013 lavet til Journalist Mads Sixthøj, Berlingske
Analyse data efter rekvisition

Krull, Lars

Publication date:
2013

Document Version
Tidlig version også kaldet pre-print

[Link to publication from Aalborg University](#)

Citation for published version (APA):
Krull, L., (2013). *Dataudtræk for Banker I Danmark 24/9-2013 lavet til Journalist Mads Sixthøj, Berlingske: Analyse data efter rekvisition*, 8 s., sep. 24, 2013.

General rights

Copyright and moral rights for the publications made accessible in the public portal are retained by the authors and/or other copyright owners and it is a condition of accessing publications that users recognise and abide by the legal requirements associated with these rights.

- Users may download and print one copy of any publication from the public portal for the purpose of private study or research.
- You may not further distribute the material or use it for any profit-making activity or commercial gain
- You may freely distribute the URL identifying the publication in the public portal -

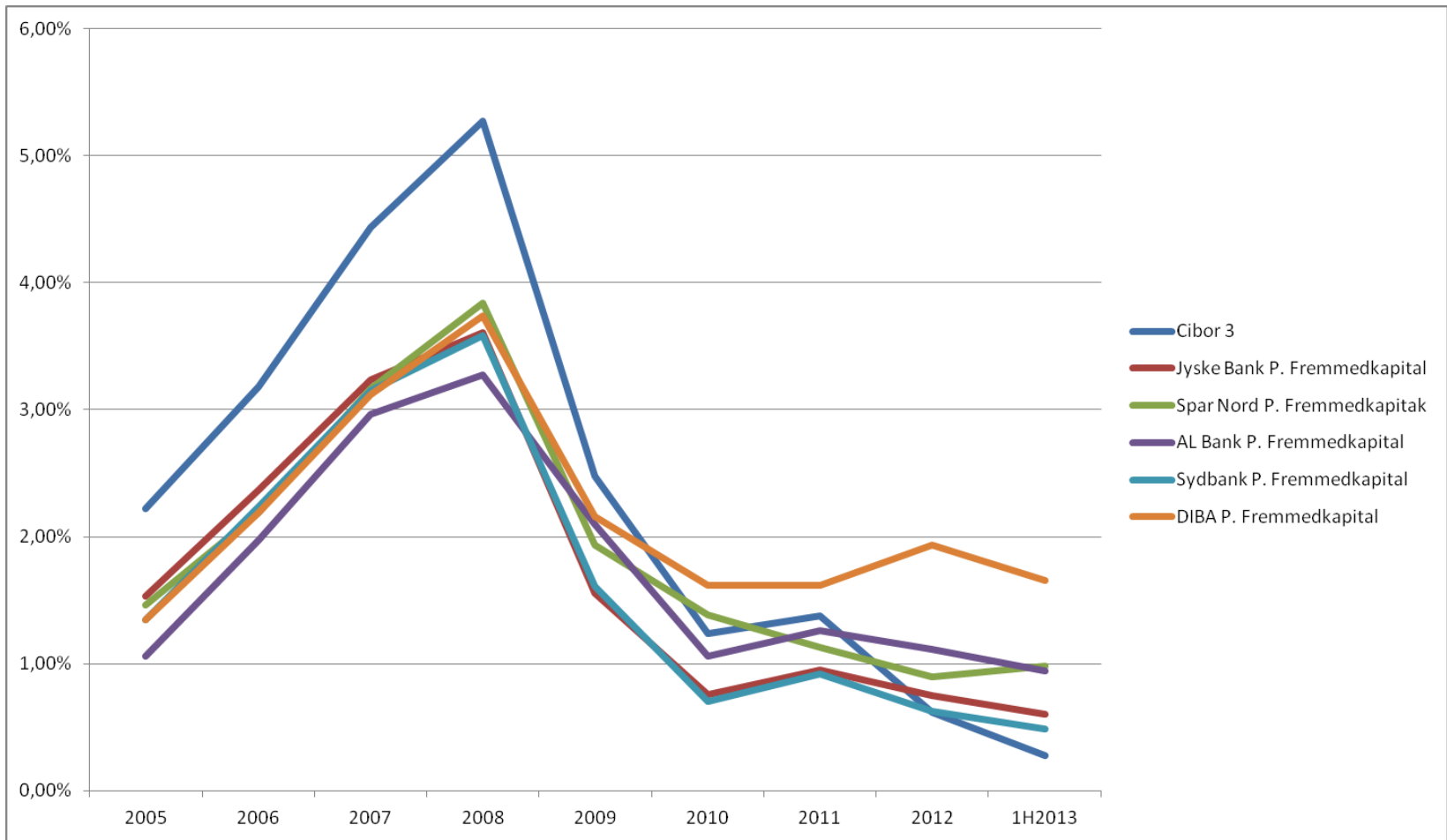
Take down policy

If you believe that this document breaches copyright please contact us at vbn@aub.aau.dk providing details, and we will remove access to the work immediately and investigate your claim.



Dataudtræk
Lavet til journalist Mads Sixhøj
16/9-2013

DIBA



DIBA data

	2005	2006	2007	2008	2009	2010	2011	2012	1H2013
Cibor 3	2,22%	3,18%	4,44%	5,27%	2,48%	1,24%	1,38%	0,62%	0,28%
Jyske Bank P. Fremmedkapital	1,53%	2,37%	3,24%	3,61%	1,55%	0,75%	0,95%	0,75%	0,60%
Spar Nord P. Fremmedkapital	1,46%	2,19%	3,17%	3,84%	1,93%	1,39%	1,13%	0,90%	0,98%
AL Bank P. Fremmedkapital	1,06%	1,97%	2,97%	3,28%	2,10%	1,06%	1,26%	1,11%	0,94%
Sydbank P. Fremmedkapital	1,35%	2,24%	3,15%	3,58%	1,61%	0,71%	0,92%	0,63%	0,49%
DIBA P. Fremmedkapital	1,35%	2,19%	3,12%	3,74%	2,16%	1,62%	1,62%	1,94%	1,66%

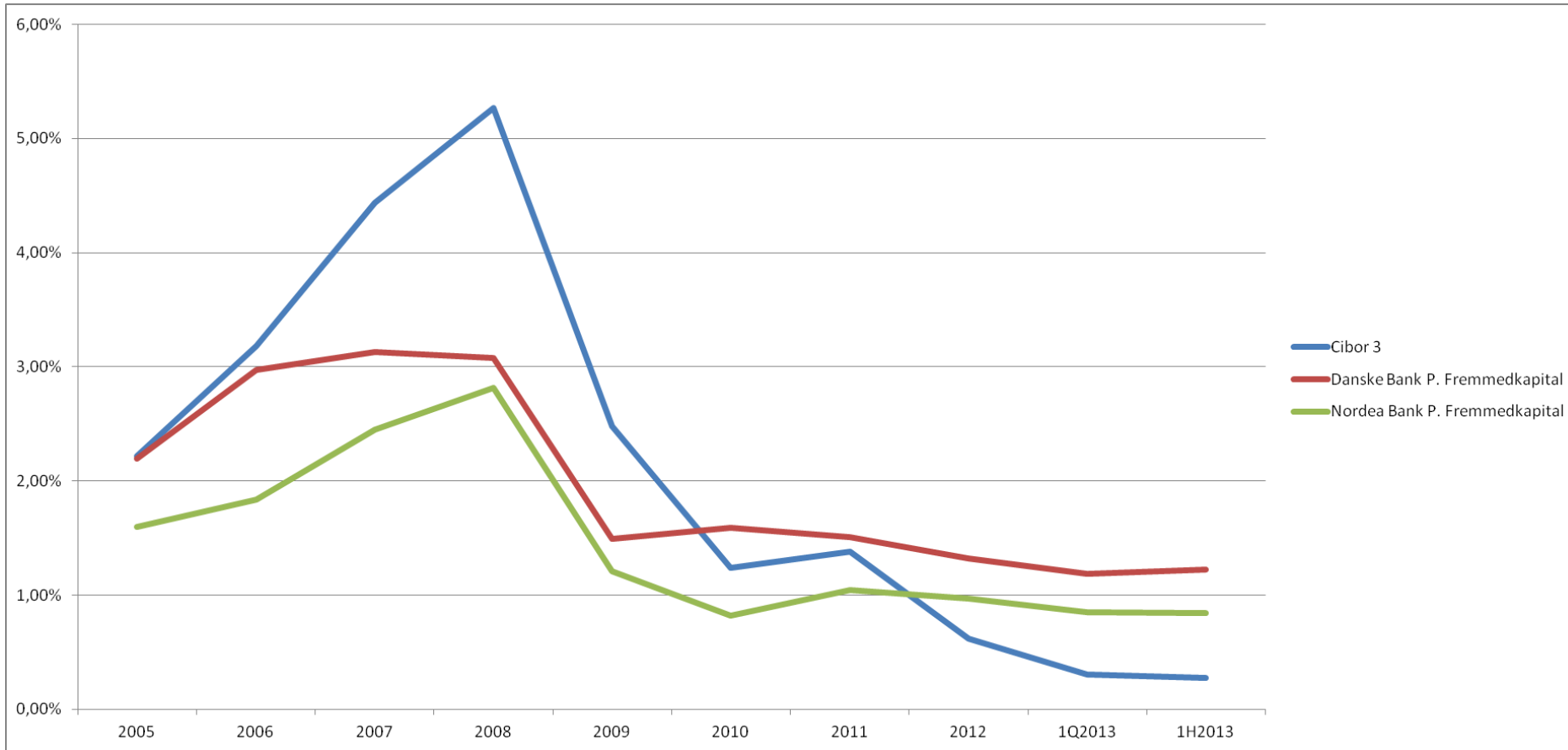
Vestjysk Bank



Vestjysk Bank data

	2005	2006	2007	2008	2009	2010	2011	2012	1H2013
Cibor 3	2,22%	3,18%	4,44%	5,27%	2,48%	1,24%	1,38%	0,62%	0,28%
Jyske Bank P. Fremmedkapital	1,53%	2,37%	3,24%	3,61%	1,55%	0,75%	0,95%	0,75%	0,60%
Spar Nord P. Fremmedkapital	1,46%	2,19%	3,17%	3,84%	1,93%	1,39%	1,13%	0,90%	0,98%
Sydbank P. Fremmedkapital	1,35%	2,24%	3,15%	3,58%	1,61%	0,71%	0,92%	0,63%	0,49%
Vestjysk Bank P. Fremmedkapital	1,59%	2,45%	3,74%	3,83%	3,19%	2,37%	2,40%	2,55%	2,09%

Danske Bank/Nordea



Danske Bank/Nordea data

	2005	2006	2007	2008	2009	2010	2011	2012	1Q2013	1H2013
Cibor 3	2,22%	3,18%	4,44%	5,27%	2,48%	1,24%	1,38%	0,62%	0,30%	0,28%
Danske Bank P. Fremmedkapital	2,20%	2,97%	3,13%	3,07%	1,49%	1,59%	1,51%	1,32%	1,18%	1,22%
Nordea Bank P. Fremmedkapital	1,60%	1,84%	2,45%	2,82%	1,21%	0,82%	1,04%	0,97%	0,85%	0,85%

Lars Krull
Seniorrådgiver
Institut for Økonomi og Ledelse
Aalborg Universitet
krull@business.aau.dk
Telefon 9940 2705